



Experiences from Sub-regional Implementation Support Networks Southeast Asia and East Asia

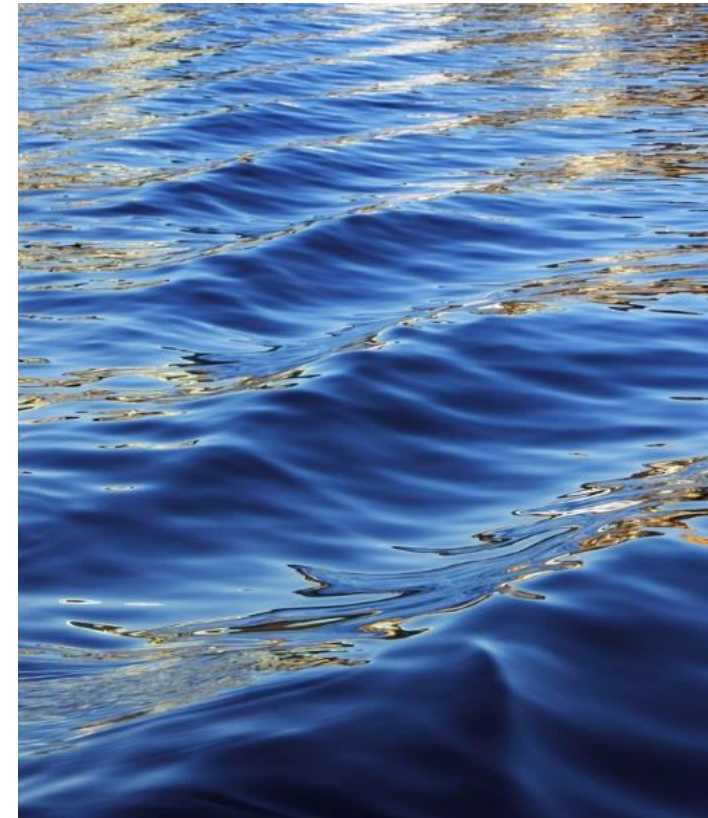
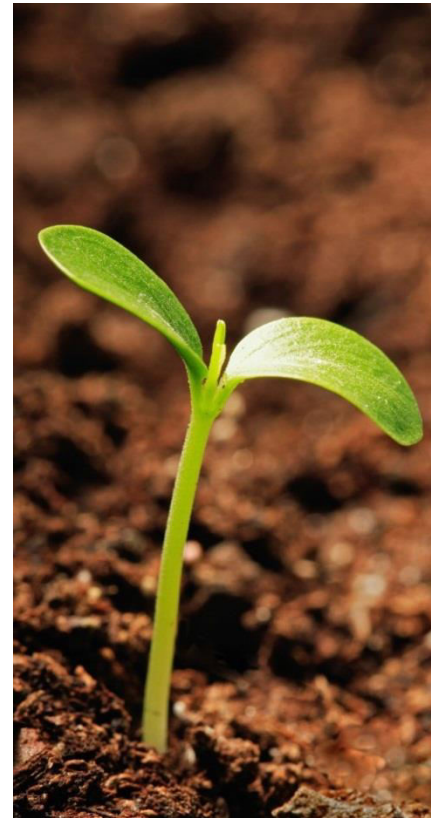
Clarissa Arida



UN Biodiversity Conference 2018



**UN BIODIVERSITY
CONFERENCE**
Investing in biodiversity for people and planet
COP 14 - CP/MOP9 - NP/MOP3
Sharm El Sheikh, Egypt, 2018



ASEAN Member Countries



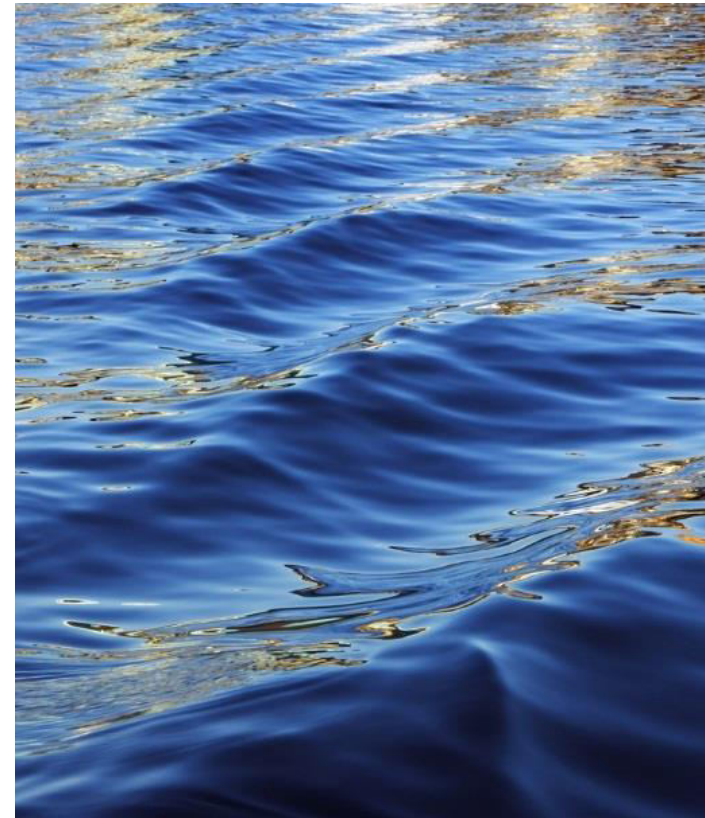
STATUS

TERRESTRIAL COVERAGE

Southeast Asia	13.29 %
East Asia	16.05 %
Whole of ESEA	15.28 %
Global	14.8 %

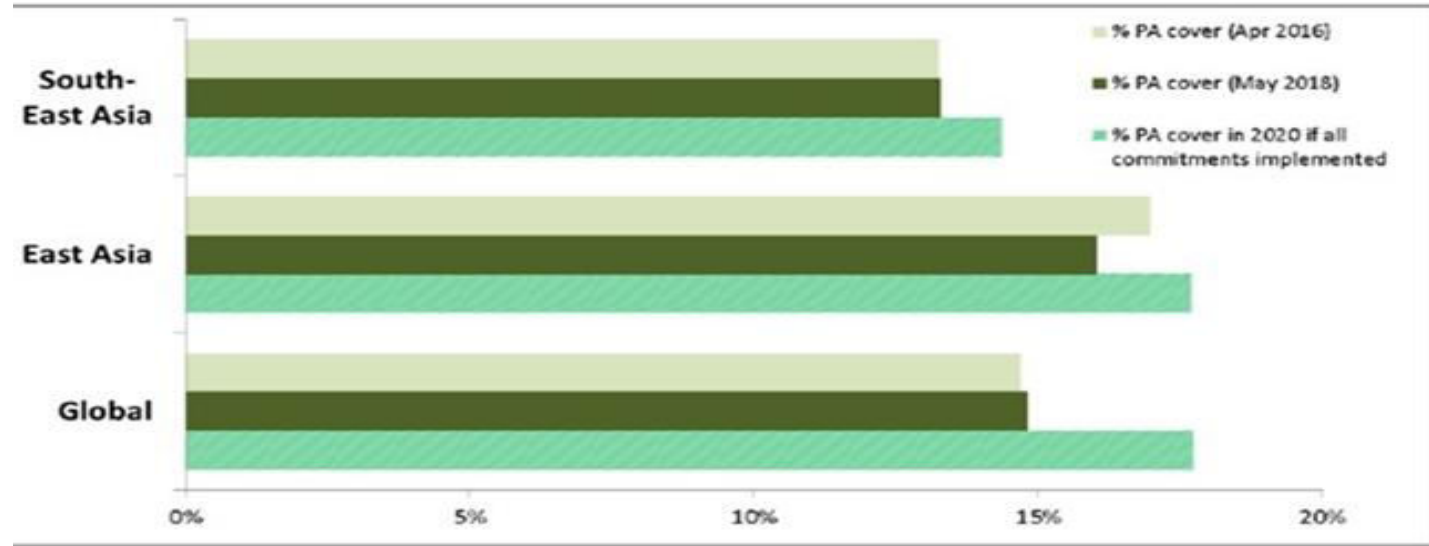
MARINE COVERAGE

Southeast Asia	2.36%
East Asia	6.83%
Whole of ESEA	4.00%
Global	16.77% (7.26%)

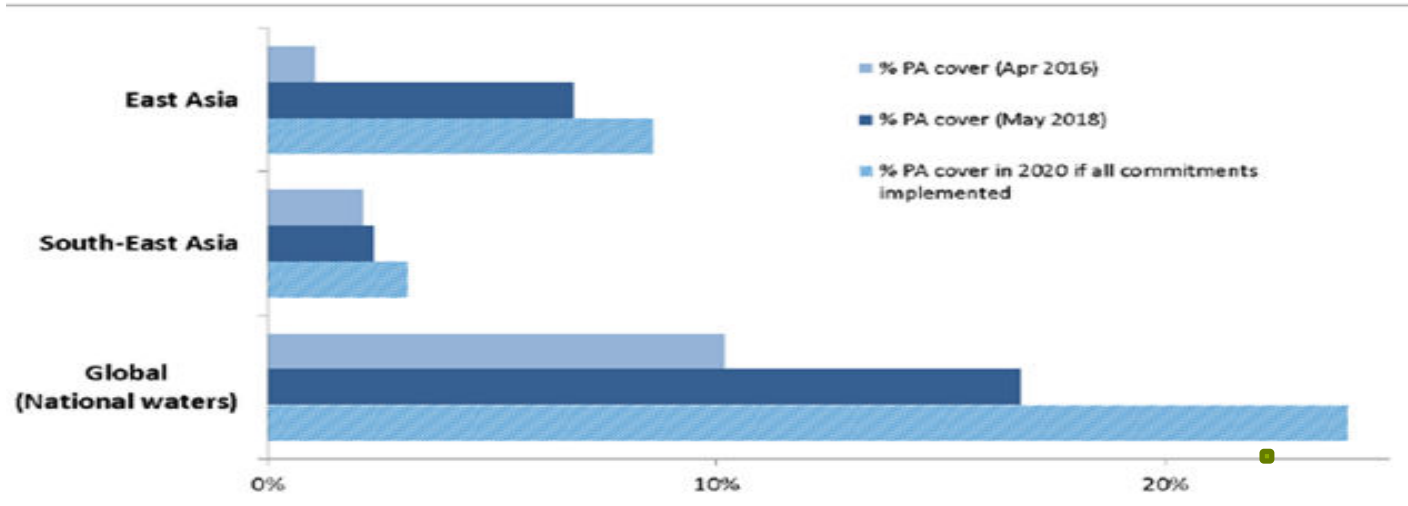


Terrestrial and Marine Protected Area coverage in South East Asia

Terrestrial Protected Area Coverage



Marine Protected Area Coverage



○ A slight increase in the coverage of terrestrial and marine protected areas was generated by the South East Asia from April 2016 to May 2018

STATUS

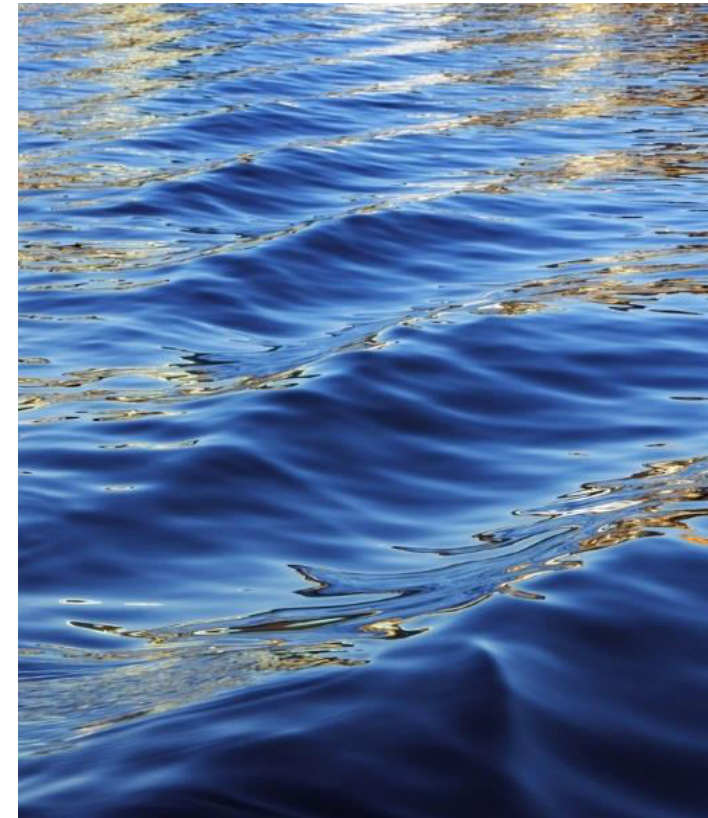
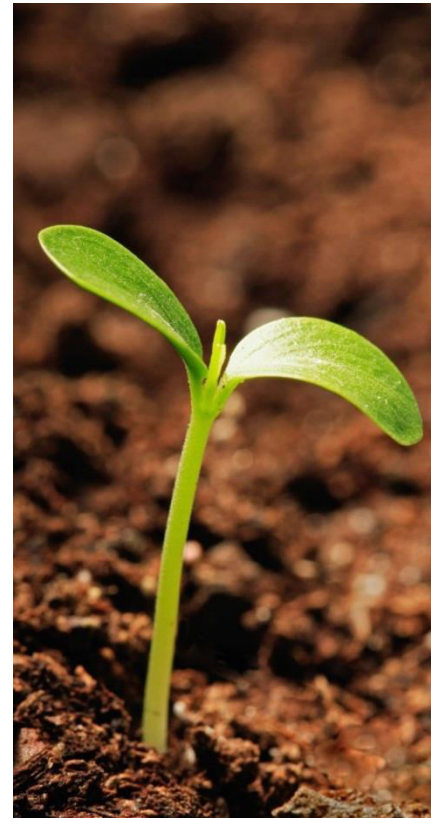
ECOLOGICAL REPRESENTATION

Terrestrial ecoregions with at least 17% PA cover globally

Southeast Asia	34 (49%)
East Asia	26 (32%)
Whole of ESEA	60 (40%)

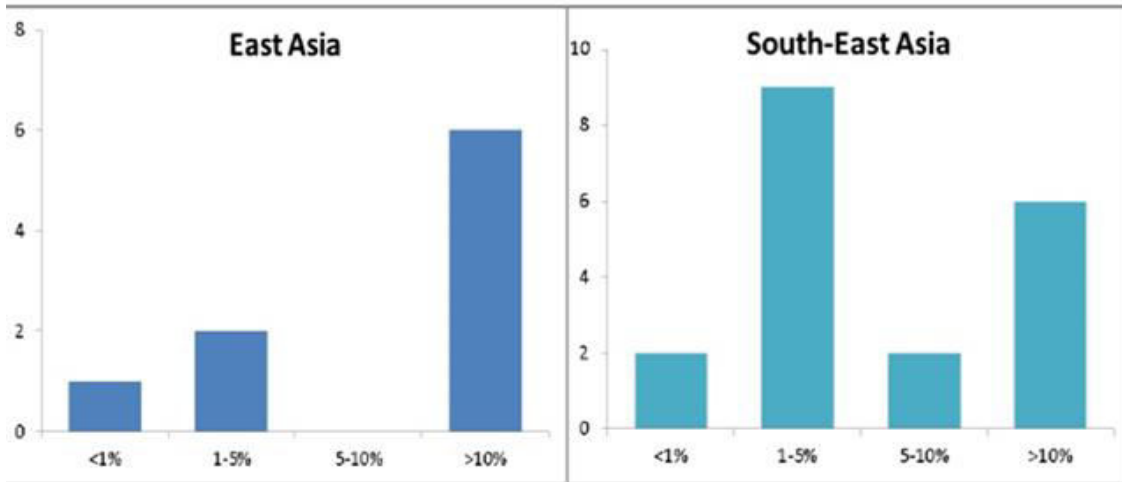
Marine ecoregions with at least 10% PA cover globally

Southeast Asia	6 (67%)
East Asia	6 (32%)
Whole of ESEA	12 (44%)

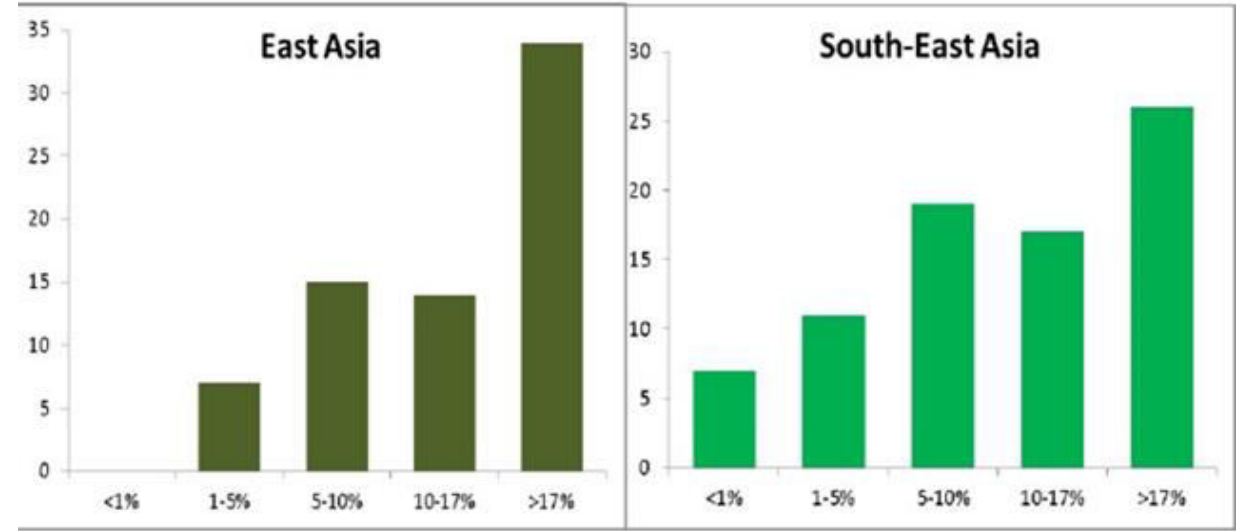


Ecological Representation in South East Asia

of marine ecoregions (at least 25% in sub-region) at different levels of PA cover



of terrestrial ecoregions (at least 25% in sub-region) at different levels of PA cover



○ PAs that have good ecological representation increased in South East Asia

STATUS

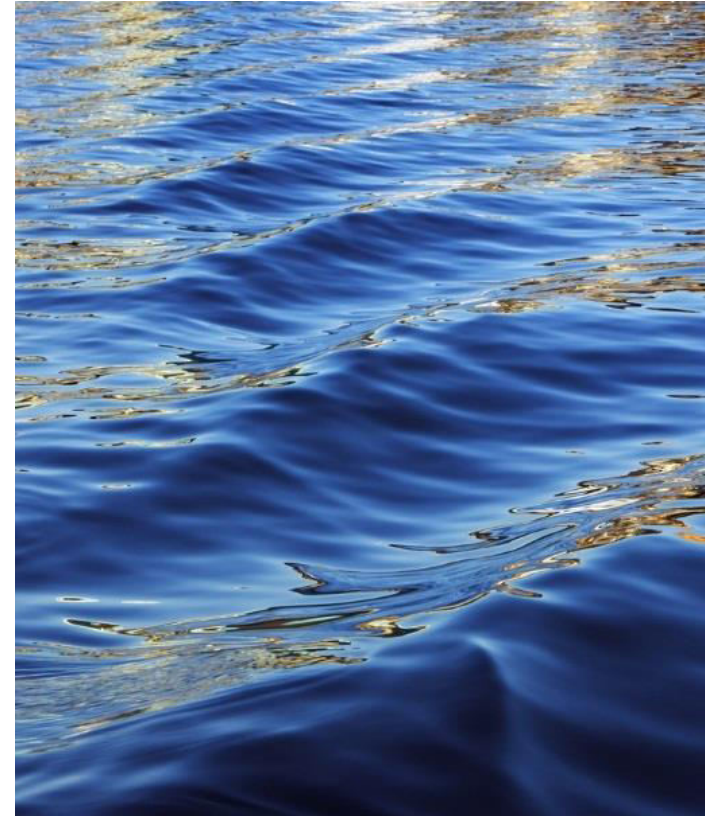
Areas important for biodiversity

Mean percent area of terrestrial KBAs covered by PAs

Southeast Asia	35.35 %
East Asia	51.11 %
Whole of ESEA	42.97 %
Global	46.65 %

Mean percent area of marine KBAs covered by PAs

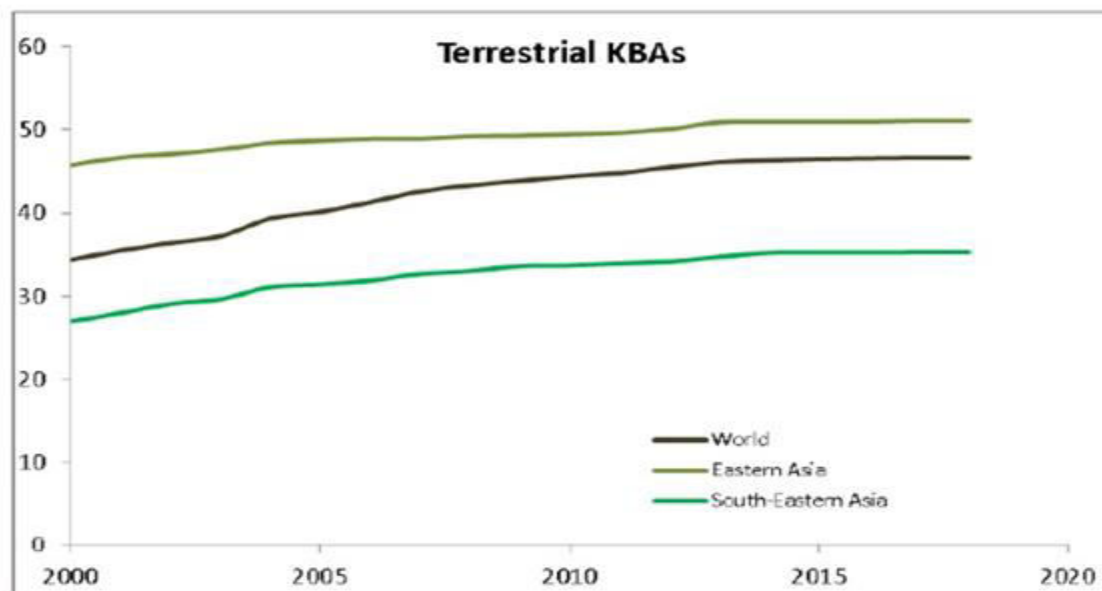
Southeast Asia	31.21 %
East Asia	45.90 %
Whole of ESEA	38.69 %
Global	44.31 %



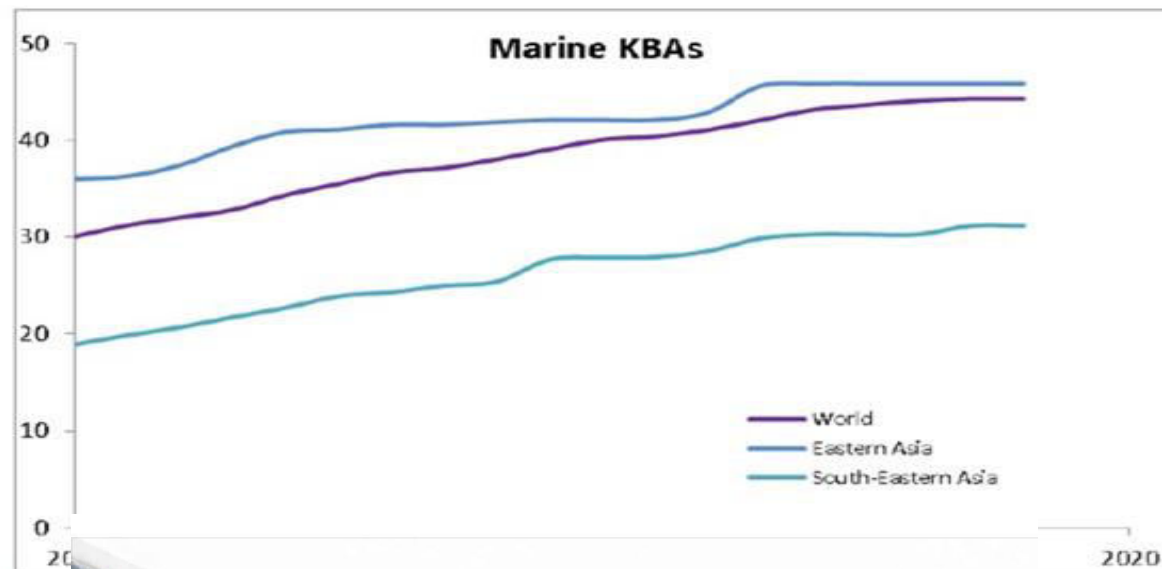
Areas Important for Biodiversity

Efforts in KBAs shows an upward trend, though at a slow rate for Terrestrial KBAs, and at an increasing rate for marine PAs.

Mean % cover of terrestrial KBAs by reported PAs



Mean % cover of marine KBAs by reported PAs



THEGUARDIAN.COM

Surge in marine refuges brings world close to protected areas goal



STATUS

Connectivity

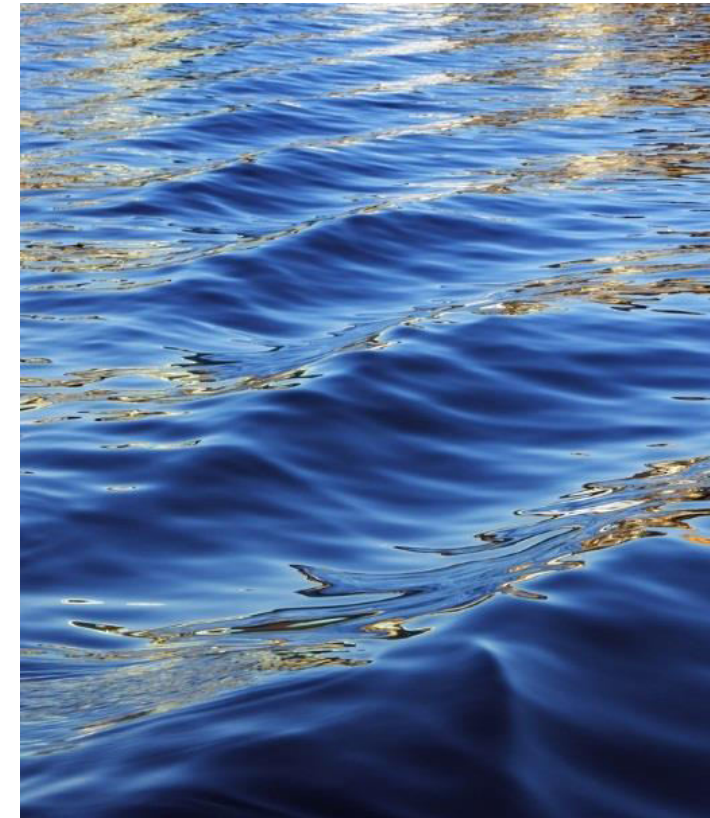
Ecoregions with at least 17% covered by protected-connected lands

Southeast Asia	14 (28%)
East Asia	14 (20%)
Whole of ESEA	28 (23%)
Global	228 (27.7%)

Countries with at least 17% covered by protected-connected lands

Southeast Asia	1 (17%)
East Asia	1 (9%)
Whole of ESEA	2 (11%)
Global	30.5%

% of terrestrial ecoregions and % of countries and territories have protected and connected lands covering at least 17%.



Gaps

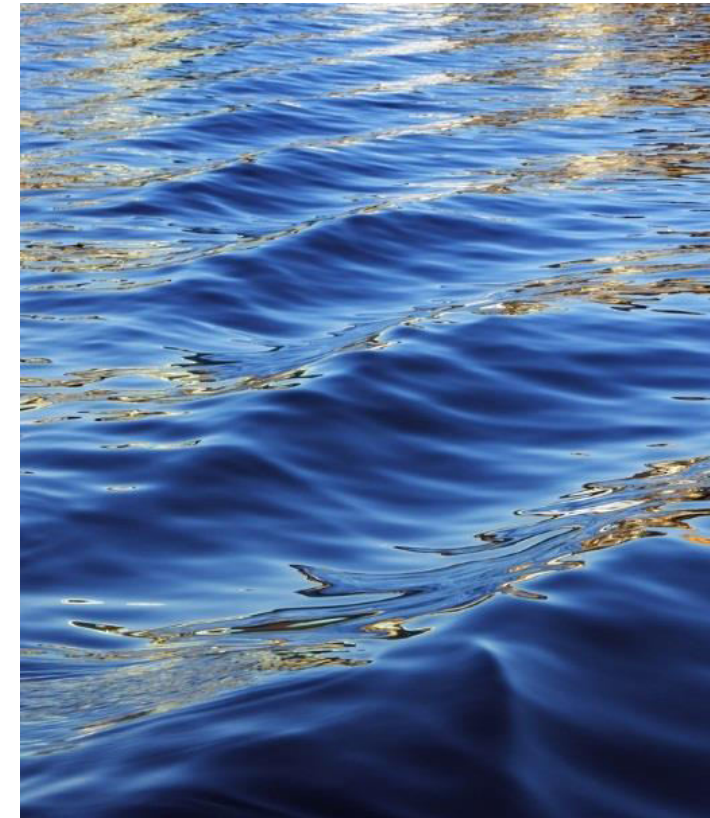
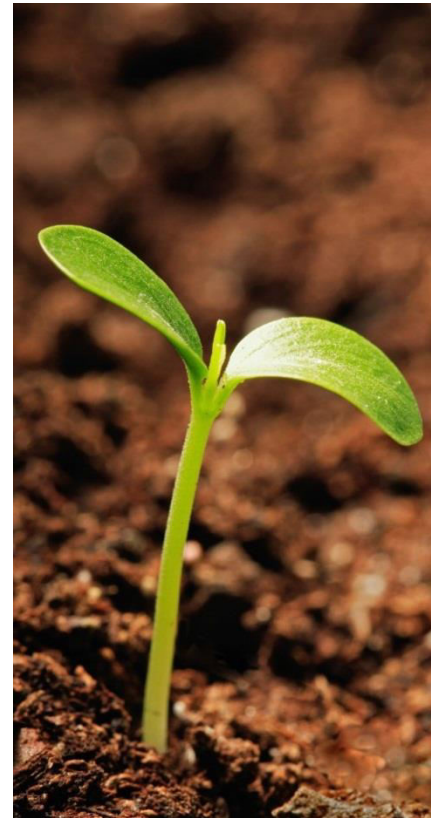
TERRESTRIAL COVERAGE

Southeast Asia	13.29 %	(3.71)
East Asia	16.05 %	(0.95)
Whole of ESEA	15.28 %	(1.72)
Global	14.8	

MARINE COVERAGE

Southeast Asia	2.36%	(7.64%)
East Asia	6.83%	(3.17%)
Whole of ESEA	4.00%	(6.00%)
Global	16.77%	(7.26%)

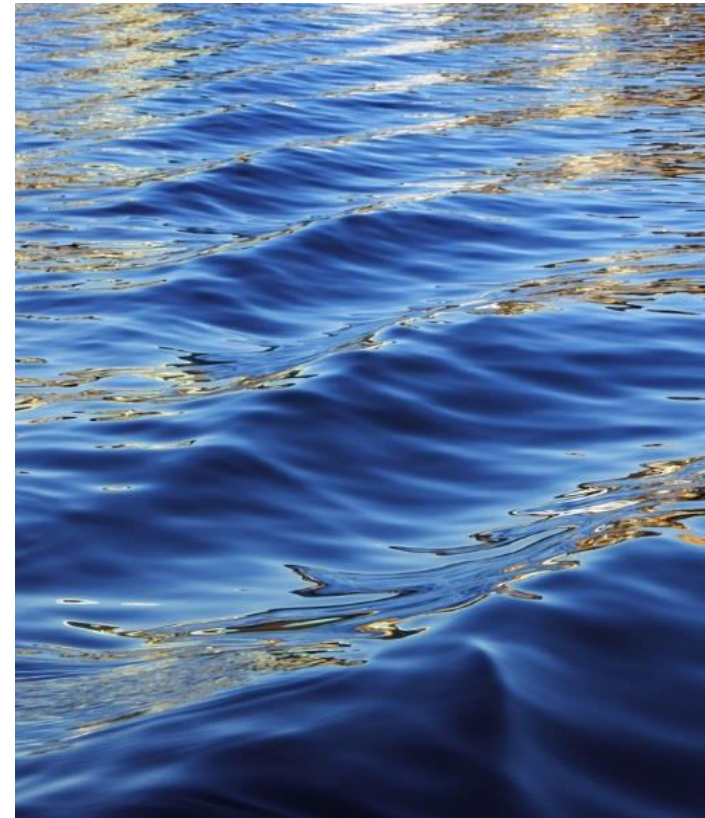
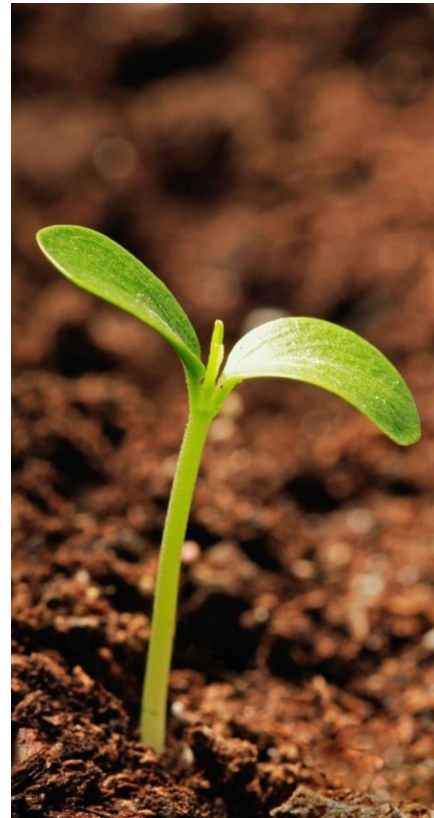
National Waters



OPPORTUNITIES

- Countries' Priority Actions
- Collaboration with GEF

Securing the long-term protection of Key Biodiversity Areas in Tanintharyi through integrated planning and management at land and seascape scales, with interconnectivity from ridge to reef in Taninthary



Opportunities (Countries' Priority Actions)

Expanding Terrestrial PA Coverage

- Philippines- Expand PA estate to cover 4,000 square kilometers of terrestrial ICCA
- Viet Nam- Establish 46 PA to increase cover by 29,400 square kilometers

Expanding Marine PA Coverage

- Malaysia- Establish Tun Mustapha Marine Park as a marine PA that will cover 9,000 square kilometers
- Philippines- Expand national PA estate to cover 26,744.1 square kilometers



Opportunities (Collaboration with GEF)

Expanding Terrestrial PA Coverage

- Myanmar:

Approved project: Ridge to Reef: Integrated Protected Area Land and Seascape Management in Tanintharyi

Tanintharyi is nominated as an ASEAN Heritage Park

Expanding Marine PA Coverage

- Indonesia:

Approved project: Coral Reef Rehabilitation and Management Program-Coral Triangle Initiative, Phase III (COREMAPCTI III)

Sustainable management of coral reef ecosystems in Indonesia through enhanced capacity to manage coral reef ecosystems in 10 target Marine Protected Areas (MPAs).

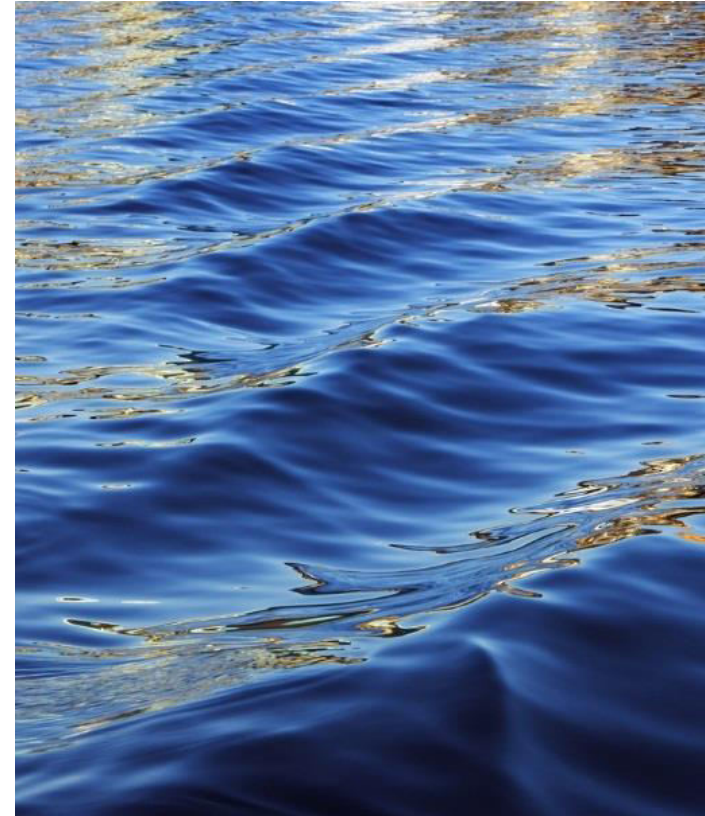


Opportunities - Partnerships

- Convening ASEAN Member States and Partners

Regional Workshops

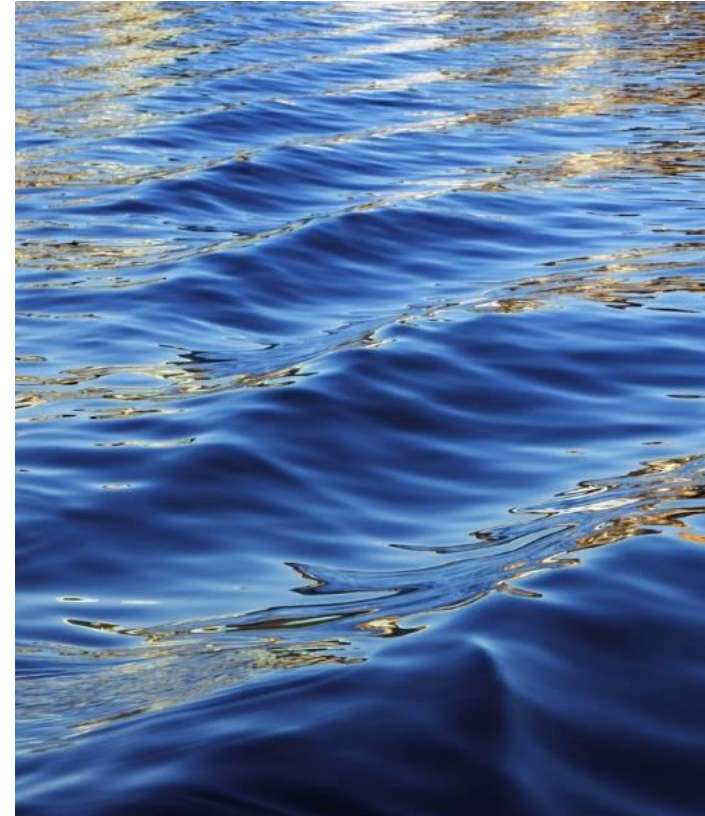
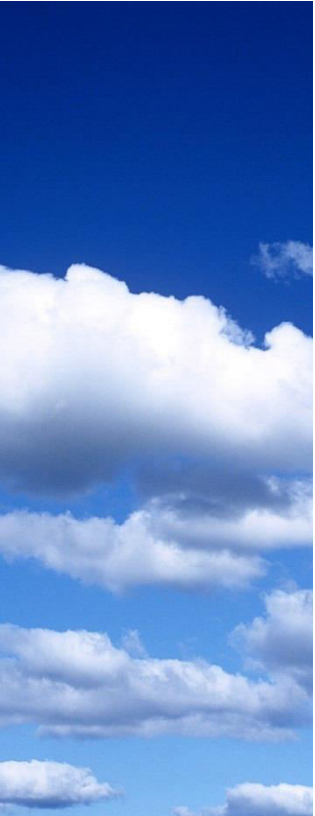
- March 2018
- August 2018



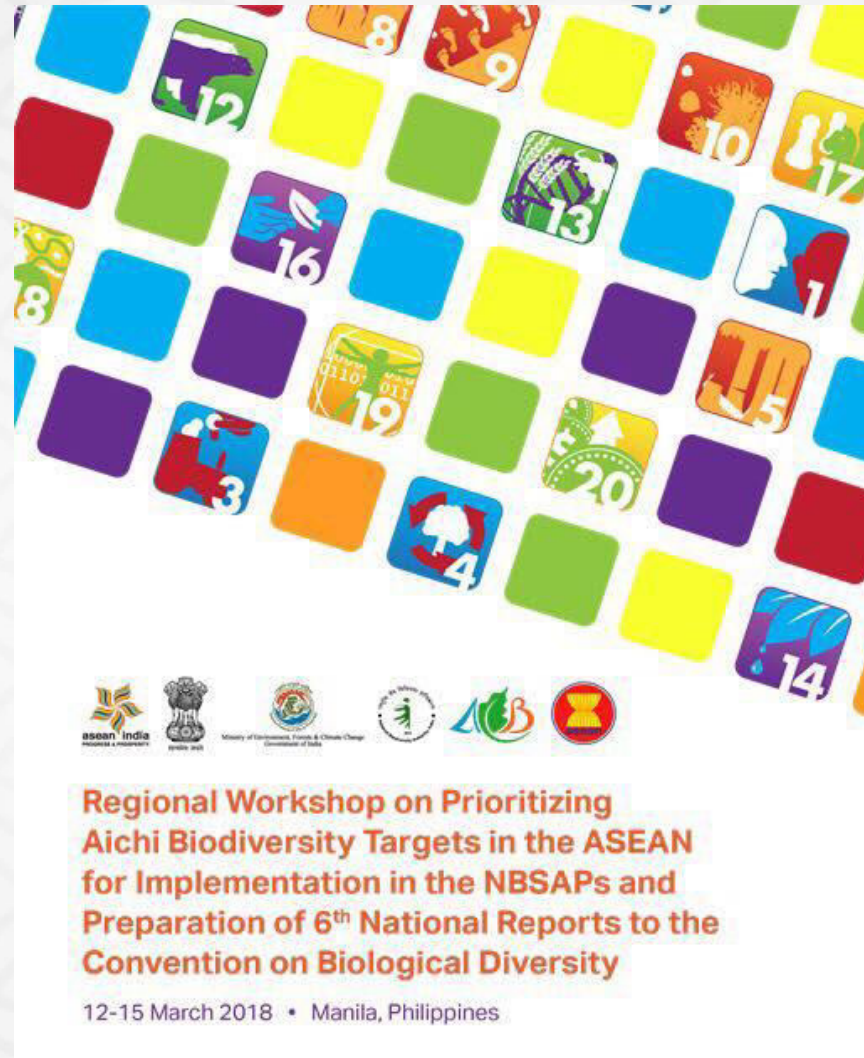
Opportunities - Partnerships

- AMS, AFN
- ACB Programmes (AHP, BCAMP, SGP)

- Partners
- CBD Secretariat
- EU, Germany, India, ASEAN + 3
- IUCN APAP
- FFI, WCS, EAFFP
- GEF (UNDP, UNEP, WB, ADB)



Regional
Implementation
Support Network in
Southeast Asia and
East Asia
- coordinated by
the
ASEAN Centre for
Biodiversity



- **Capacity-building in assessing Aichi Targets and NBSAP preparation**
- **identified set of priorities and recommended actions aligned with Aichi (turning red to yellow, and yellow to green), SDGs & Targets 11 and 12**
- **Common timeline for 6NR preparation**

ASEAN Regional Workshop on the Implementation of Aichi Target 11 30 July – 1 August 2018 Manila, Philippines

- Gathered updates on the implementation of Aichi Target 11
- Identified ways how efforts, including by NGOs and other relevant groups in ASEAN, may be put together to present a clearer picture in the achievement of Target 11 in the ASEAN
- Gathered information from ASEAN Member States on their activities to **expand** the coverage of their terrestrial and marine protected areas from 2018 to 2020

Questionnaire, Mapping Exercise



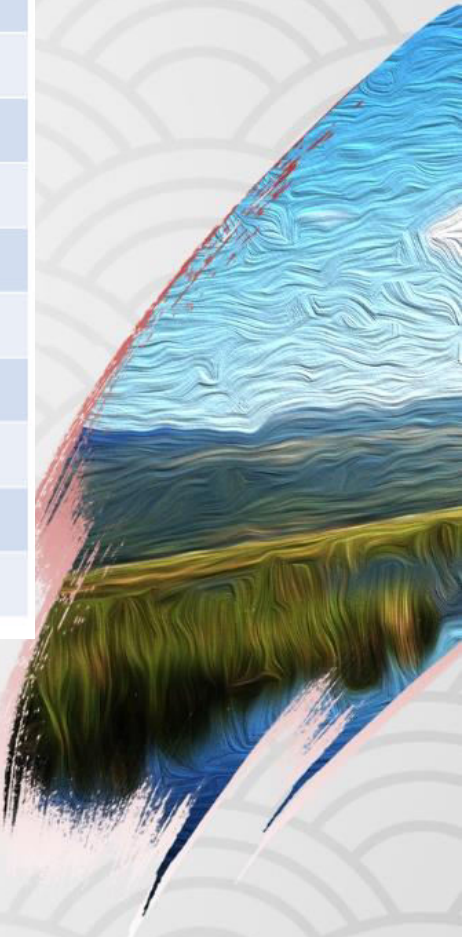


Status of Marine Protected Areas in ASEAN

Marine Protected Areas Coverage, AMS, July 2018

Country or Area	Total EEZ (km ²)	PA cover (km ²)	% PA cover	Have Reached 10% Target?	Area Needed to be protected to meet the target (km ²)
Brunei Darussalam	25,698	51.7	0.20	Not yet	2,518.12
Cambodia	47,967	89.1	0.19	Not yet	4,707.59
Indonesia	3,257,483	208,718.9	6.41	Not yet	117,029.35
Malaysia	451,742	15,759.9	3.49	Not yet	29,414.28
Myanmar	525,000	409.2	0.08	Not yet	52,090.85
Philippines	2,206,446	30,805.8	1.40	Not yet	189,838.82
Singapore	763	0.1	0.01	Not yet	76.20
Thailand	323,488	5,877.4	1.82	Not yet	26,471.43
Viet Nam	647,232	3,630.3	0.56	Not yet	61,092.94
ASEAN	7,485,819	265,342.3	3.54	Not yet	454,962.13

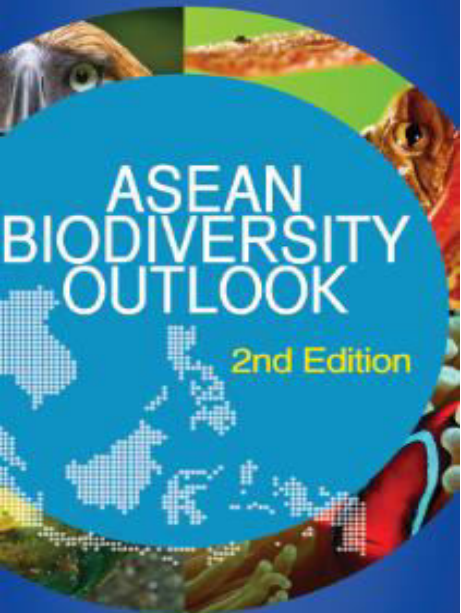
- AMS have yet to achieve the 10% PA coverage target for Marine areas



What AMS intends to do to improve management effectiveness of PAs

- INDONESIA plans to go for regular implementation of METT including policy interventions to fill the gaps recognized from METT evaluation
- LAO PDR wants to improve METT evaluation at the national level
- from these two AMS reporting on their METT efforts, there needs to be greater buy-in to apply METT; imperative that METT itself is evaluated

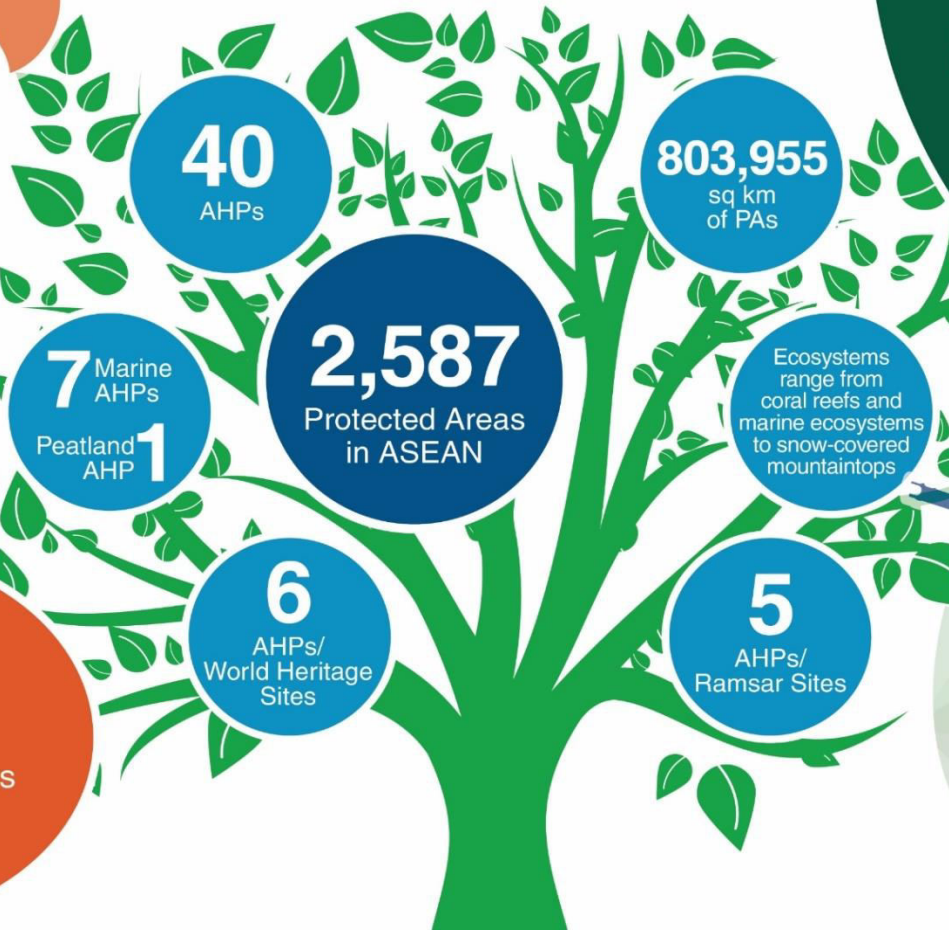




ASEAN Heritage Parks and Protected Areas: Enhancing effective management



- THREATS**
- Encroachment
 - Illegal logging
 - Invasive Alien Species
 - Poaching
 - Mining



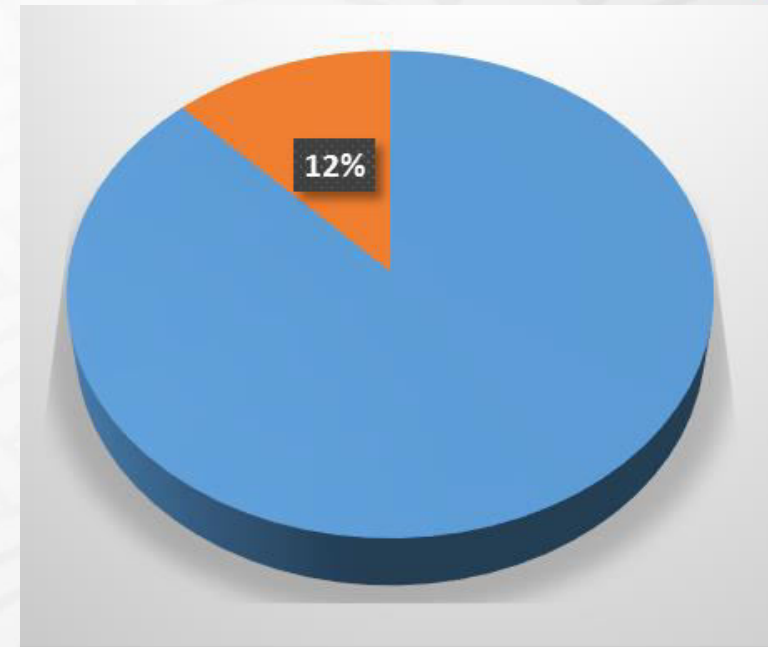
Ways Forward

- Raise public awareness
- Mobilize additional financial resources
- Implement alternative livelihood opportunities
- Seek active participation from indigenous peoples and local communities





Total Number of Protected Areas in Southeast Asian	2,652
Total area - Terrestrial	595,303 sq km
Total area - Marine	231,604 sq km
Total area of Protected Areas (Terrestrial + Marine)	826,907 sq km
Total Area of ASEAN Heritage Parks	102,310 sq km



ASEAN Heritage Parks as of October 2017

ID	AMS	AHP NAME	YR DECLARED
1	BRN	Tasek Merimbun Heritage Park	1984
2	IDN	Gunung Leuser National Park	1984
3	IDN	Kerinci-Seblat National Park	1984
4	IDN	Lorentz National Park	1984
5	MYS	Gunung Mulu National Park	1984
6	MYS	Kinabalu National Park	1984
7	MYS	Taman Negara National Park	1984
8	PHL	Mount Apo Natural Park	1984
9	PHL	Mounts Iglit-Baco National Park	1984
10	THA	Khao Yai National Park	1984
11	THA	Tarutao National Park	1984
12	KHM	Preah Monivong (Bokor) National Park	2003
13	KHM	Virachey National Park	2003
14	LAO	Nam Ha National Protected Area	2003
15	MMR	Alaungdaw Kathapa National Park	2003
16	MMR	Hkakaborazi National Park	2003
17	MMR	Indawgyi Lake Wildlife Sanctuary	2003
18	MMR	Inle Lake Wildlife Sanctuary	2003
19	MMR	Lampi Marine National Park	2003
20	MMR	Meinmahla Kyun Wildlife Sanctuary	2003
21	SGP	Sungei Buloh Wetland Reserve	2003
22	THA	Ao Phang-Nga - Mu Ko Surin - Mu Ko Similan National Park	2003
23	THA	Kaeng Krachan Forest Complex	2003
24	VNM	Ba Be National Park	2003
25	VNM	Chu Mom Ray National Park	2003
26	VNM	Hoang Lien Sa Pa National Park	2003
27	VNM	Kon Ka Kinh National Park	2003
28	PHL	Mount Kitanglad Range Natural Park	2009
29	PHL	Mount Malindang Range Natural Park	2011
30	SGP	Bukit Timah Nature Reserve	2011
31	MMR	Nat Ma Taung National Park	2012
32	VNM	U Minh Thuong National Park	2012
33	PHL	Mount Makiling Nature Reserve	2013
34	PHL	Mount Hamiguitan Range Wildlife Sanctuary	2014
35	PHL	Tubbataha Reefs Natural Park	2014
36	IDN	Way Kambas National Park	2015
37	PHL	Mount Timpoong-Hibok-Hibok Natural Monument	2015
38	VNM	Bai Tu Long National Park	2016
39	IDN	Kepulauan Seribu National Park	2017
40	IDN	Wakatobi National Park	2017

 Terrestrial
 Marine

Connectivity of PA systems

Coral Triangle (including Sulu Sulawesi Ecoregion)

- 6,000,000 sq km
- Indonesia, Malaysia and the Philippines

Heart of Borneo

- 220,000 sq km
- Brunei Darussalam, Indonesia, and Malaysia

Turtle Islands Heritage Protected Area

- 2,414.96 sq km
- Malaysia and the Philippines

Greater Mekong Subregion Alliance

- 2,600,000 sq km
- Cambodia, Lao PDR, Myanmar, Thailand, and Viet Nam

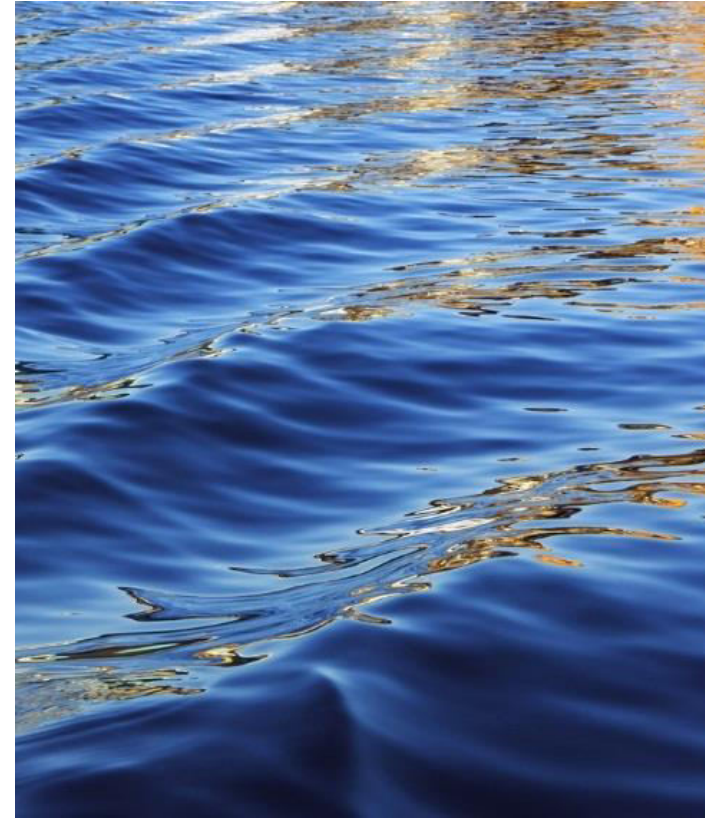
Other Transboundary Protected Area

- 242.51 sq km
- Lao PDR and China (Yunnan Province)

Aichi Biodiversity Target 11

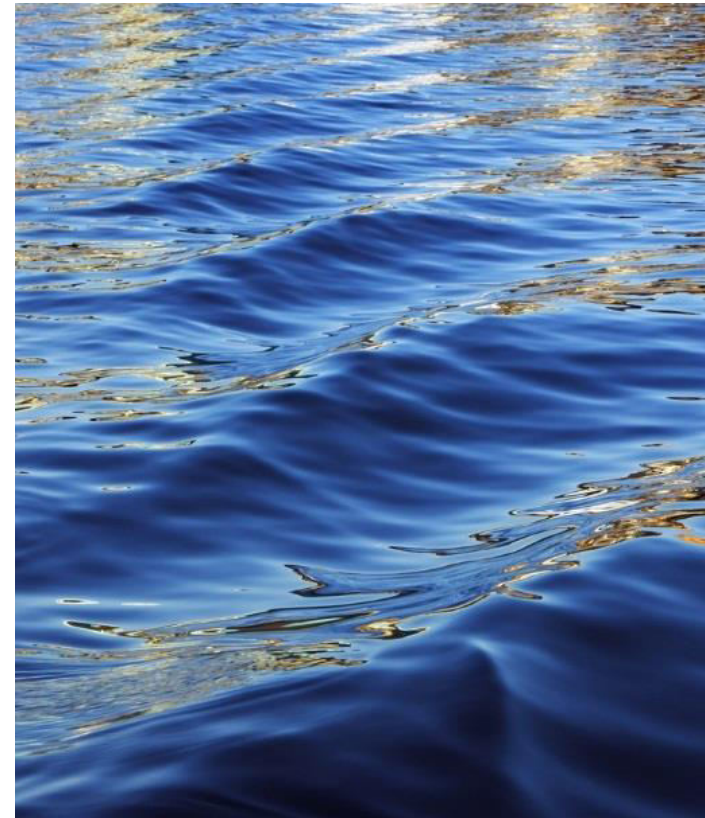
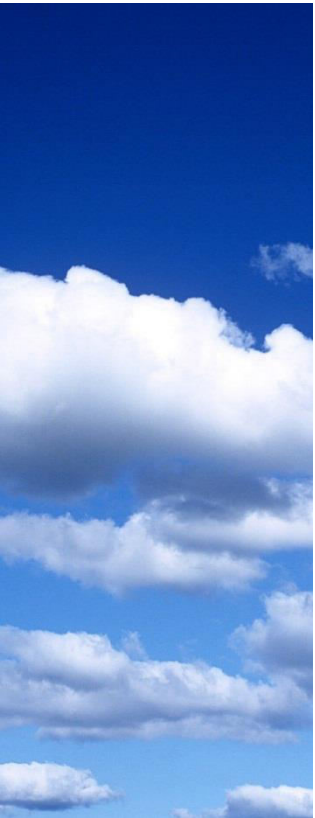


...and **other effective area-based conservation measures**, and integrated into the wider landscape and seascape.

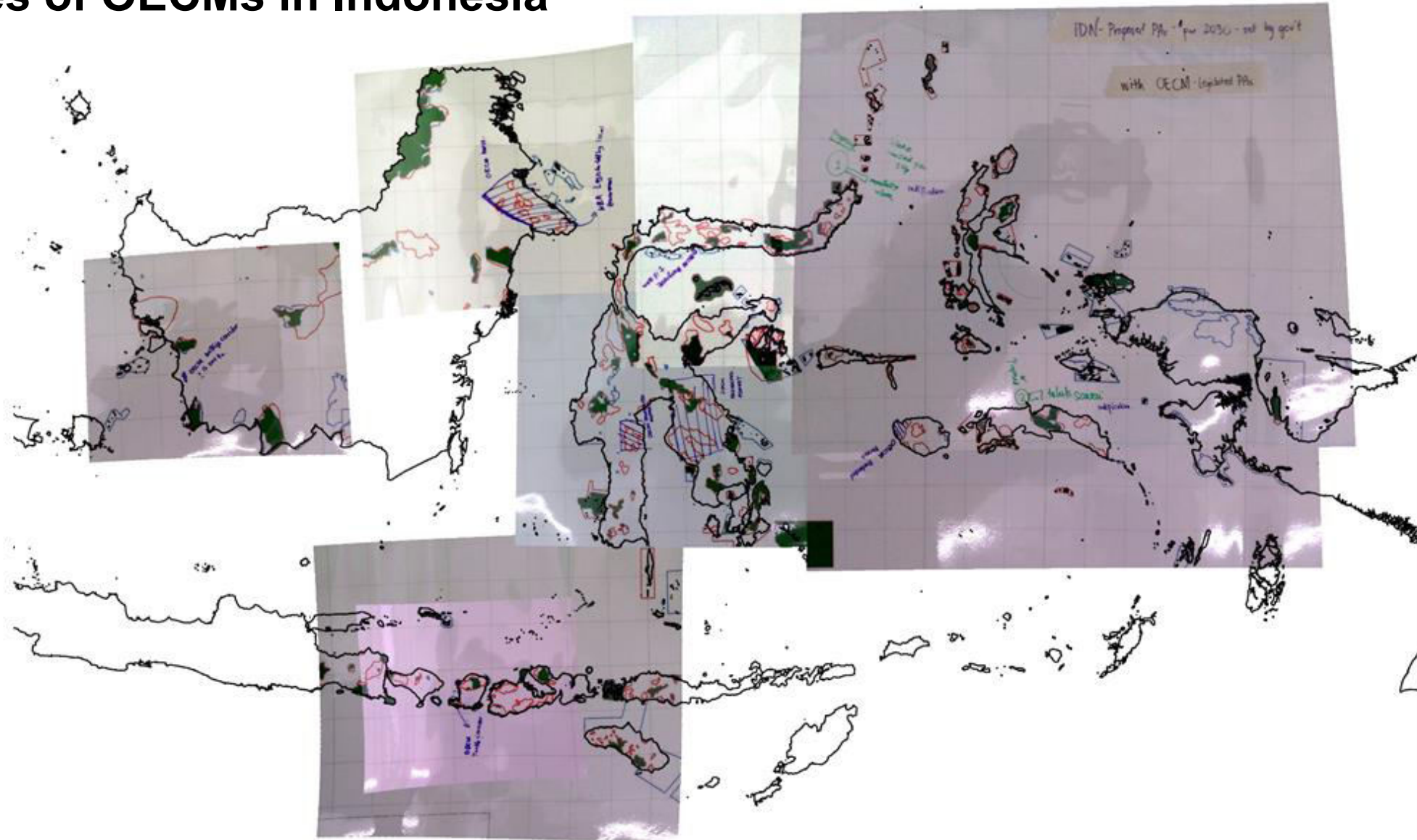


On the recognition and reporting of OECMs to improve the protection of KBAs, in the Philippines, 96 out of 101 terrestrial KBAs are part of the ancestral land and/or domains of indigenous peoples.

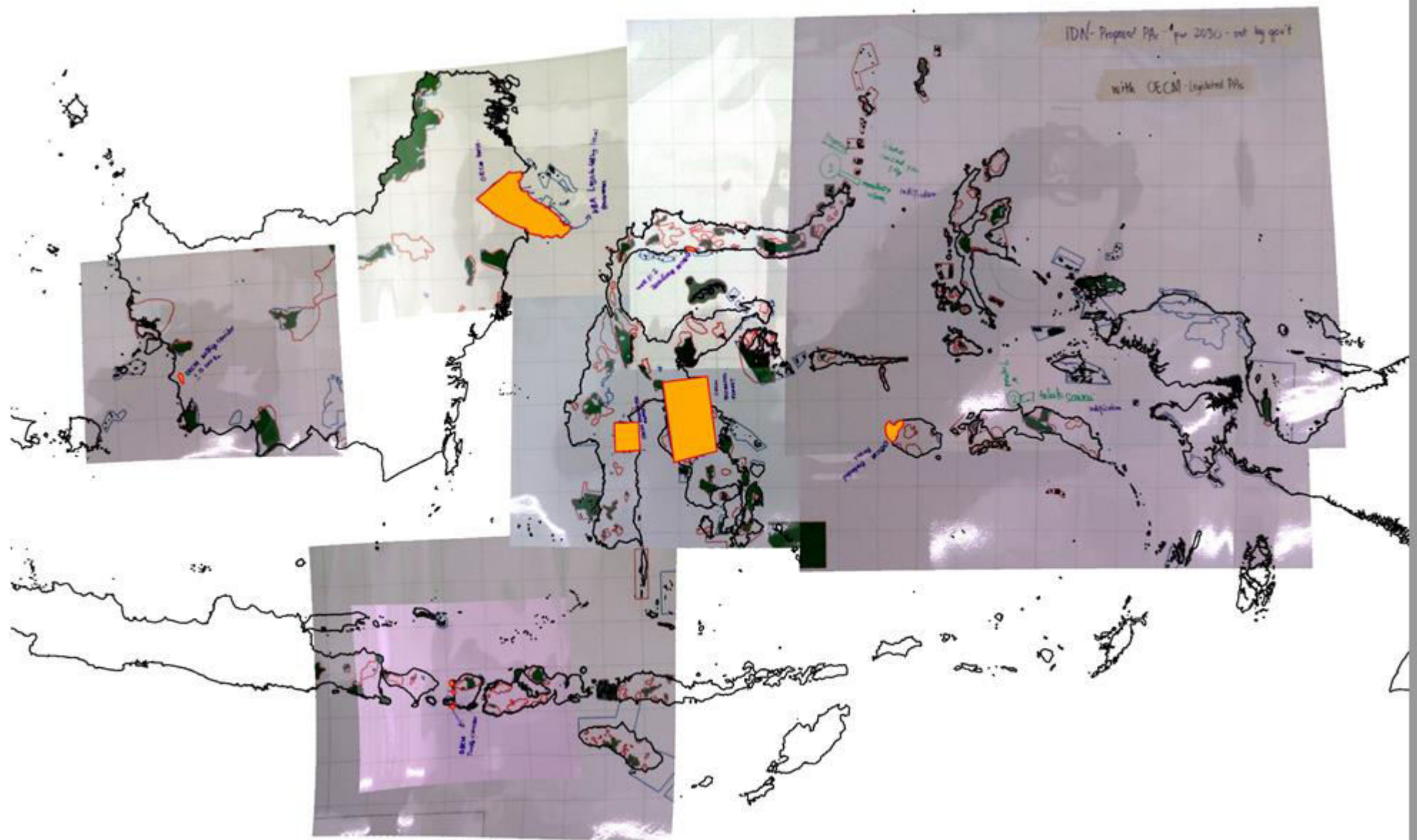
There are also declared marine sanctuaries which are not part of the national PA system.



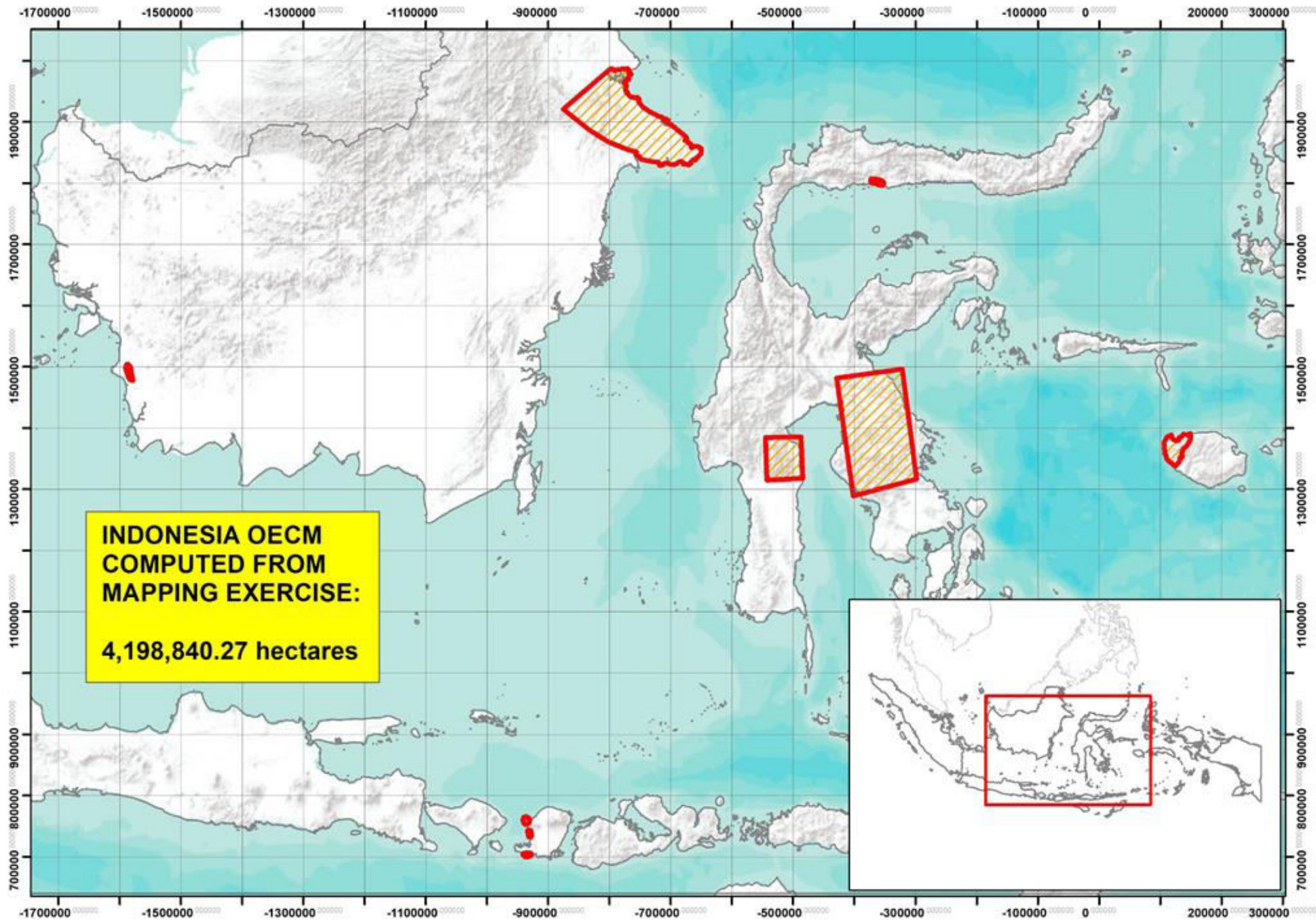
Estimates of OECMs in Indonesia



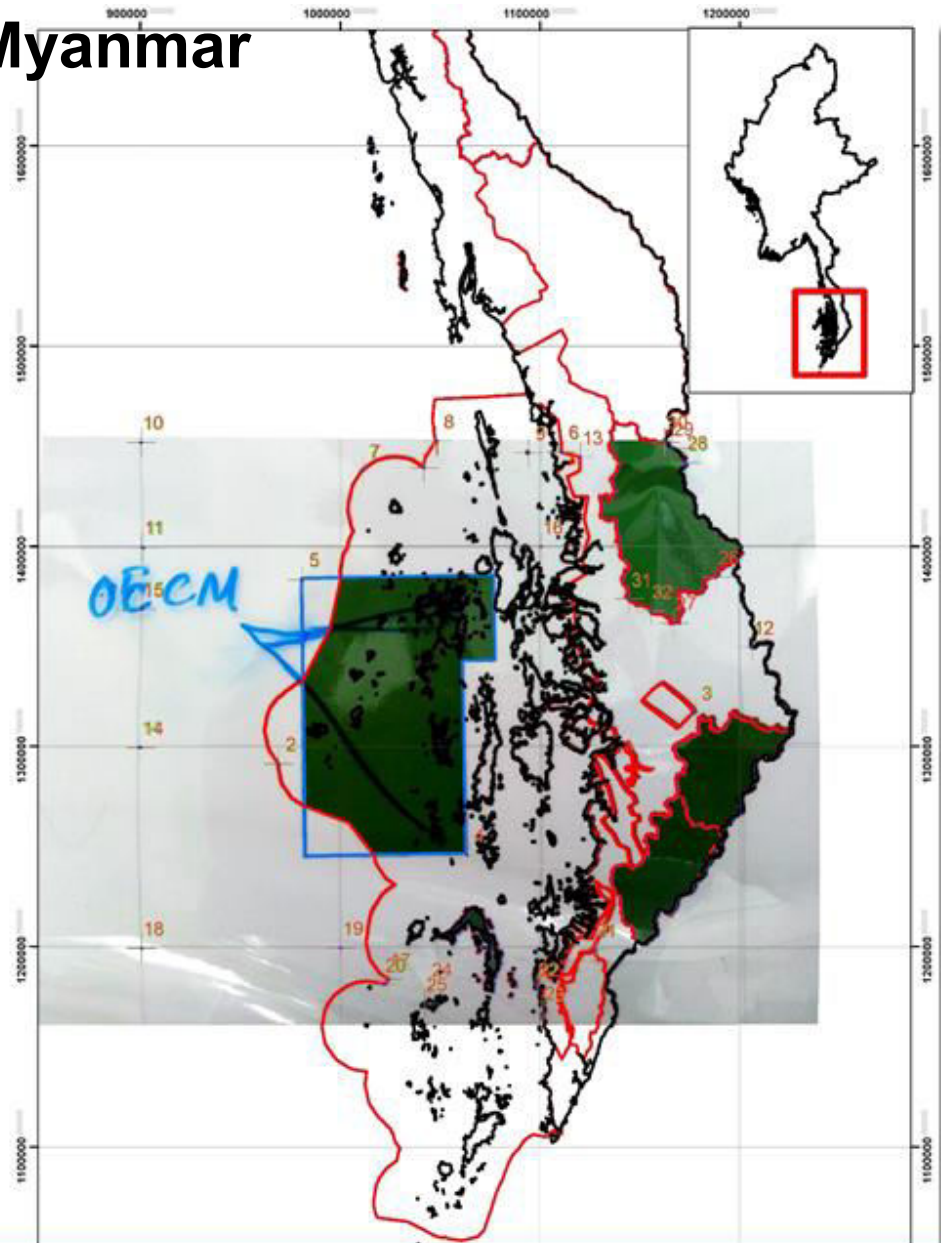
Participant's inputs were photographed and overlaid onto a GIS map of Indonesia



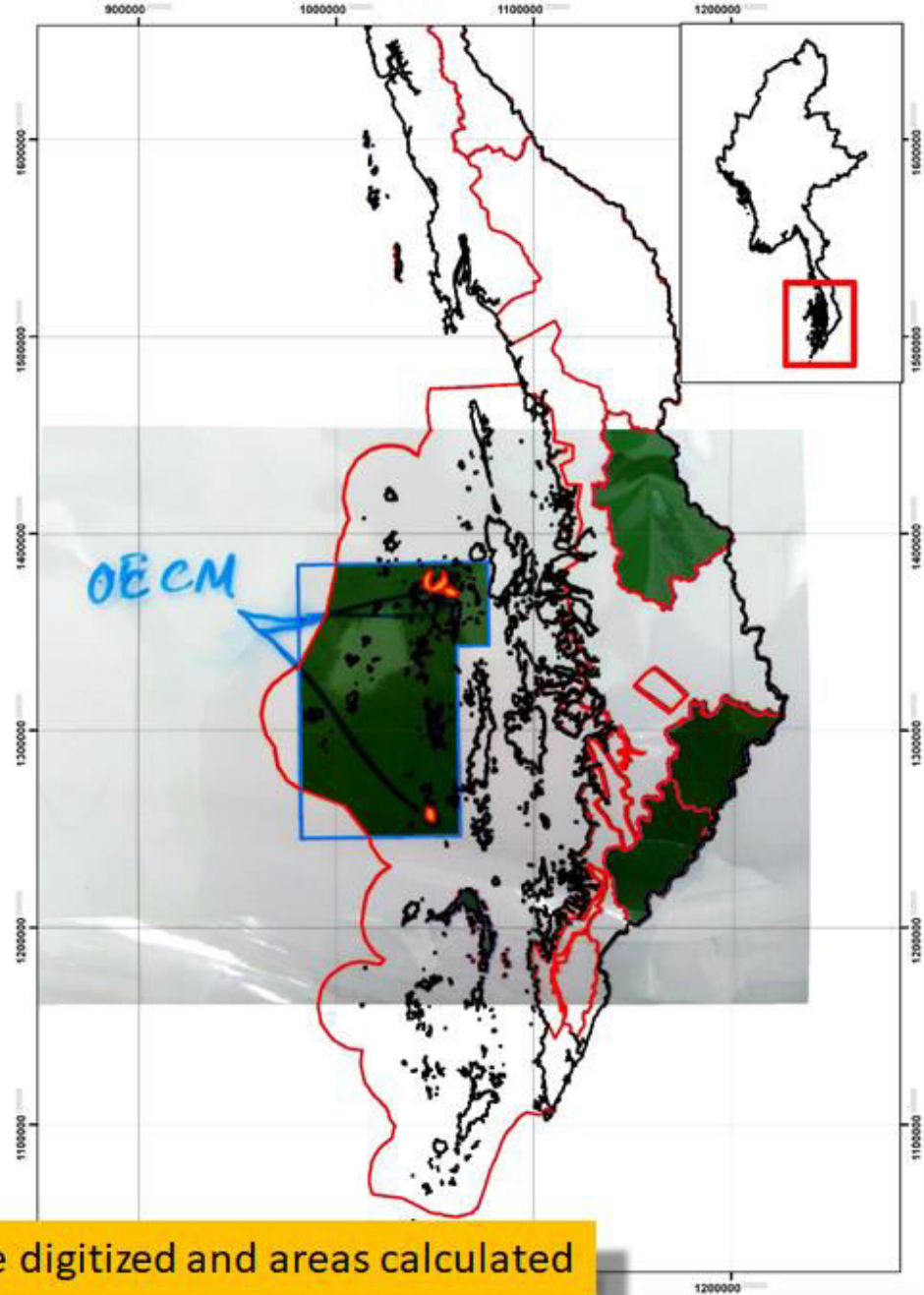
OECM inputs were digitized and areas calculated



Estimates of OECMs in Myanmar



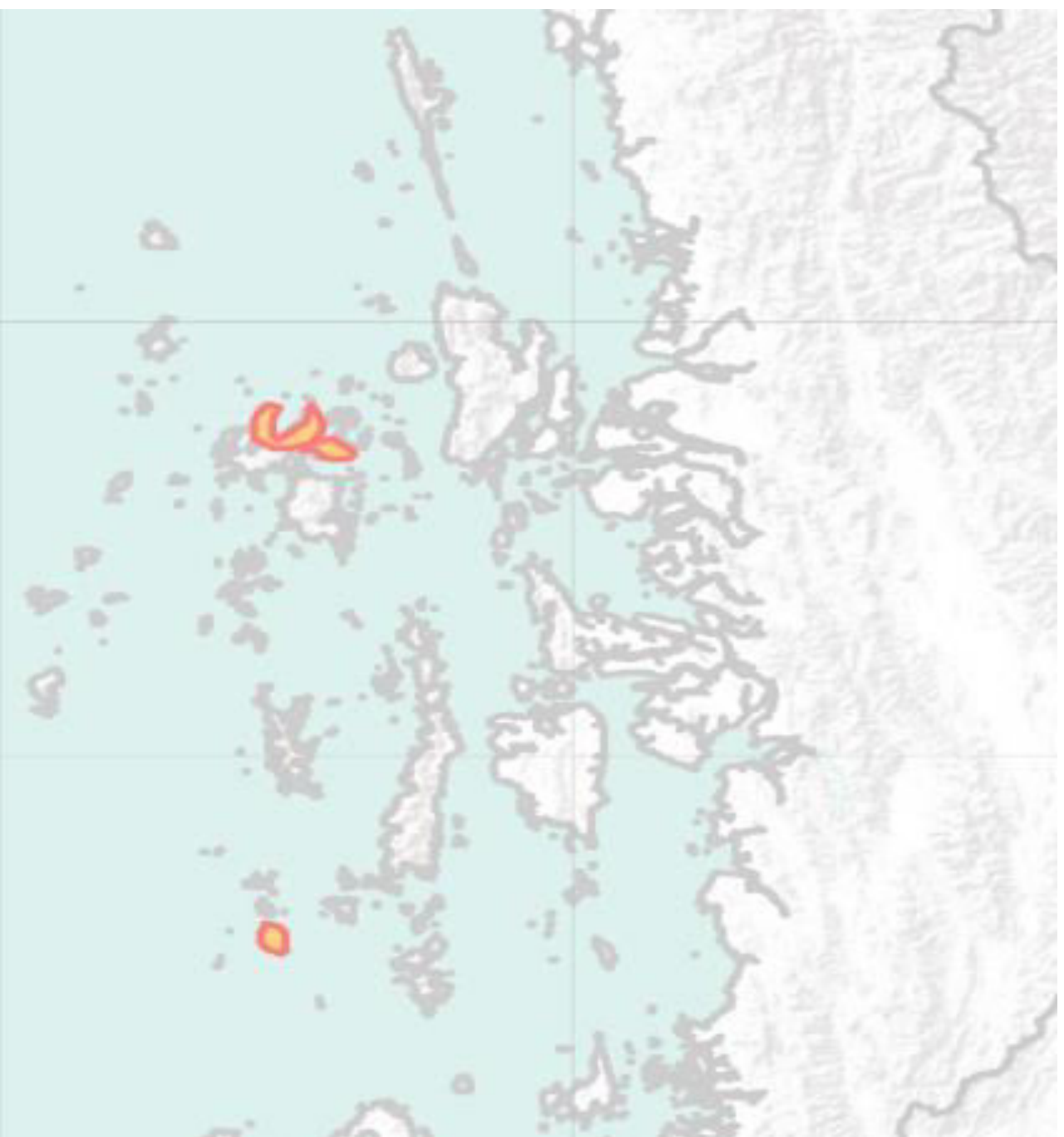
Participant's inputs were photographed and overlaid onto a GIS map of Myanmar



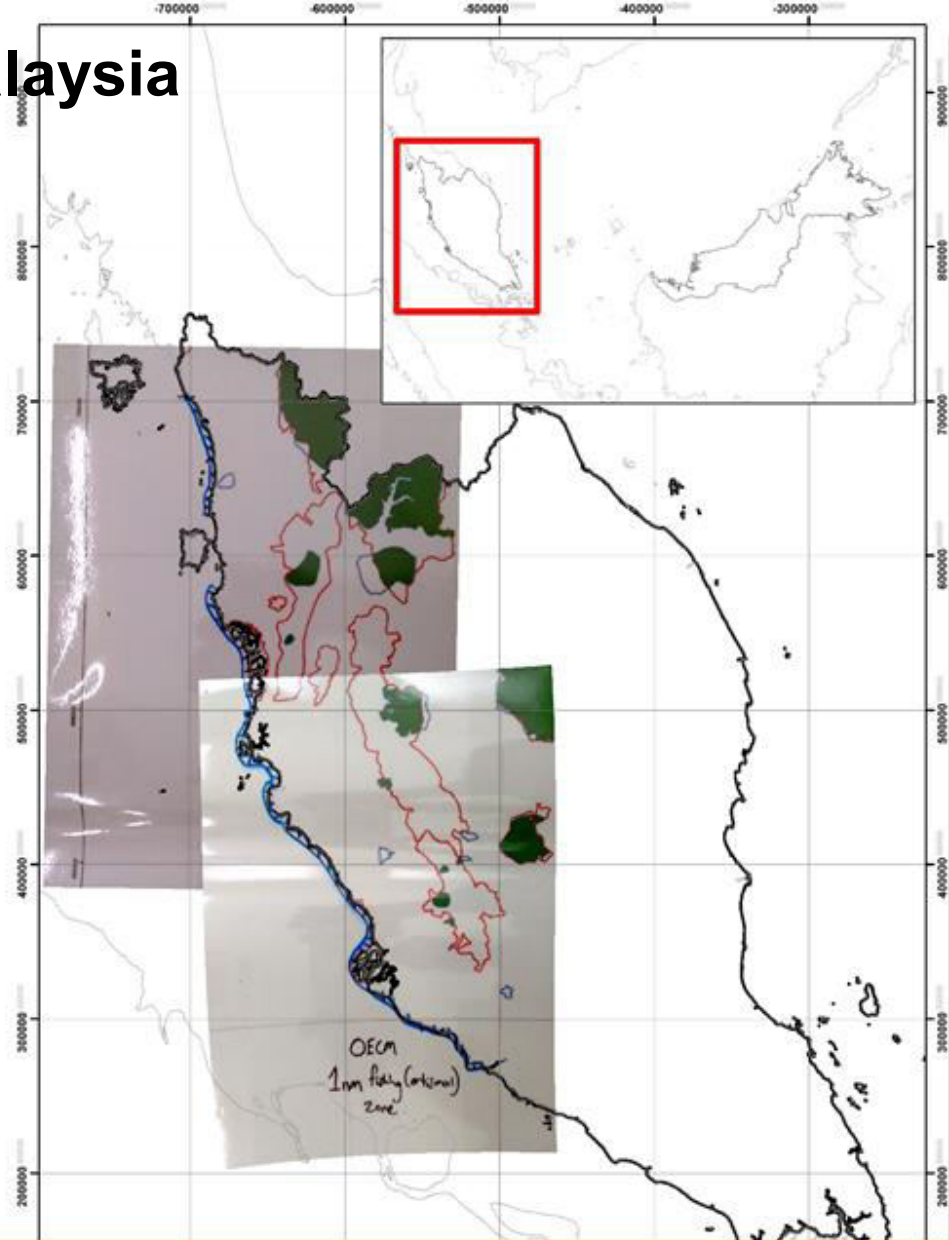
OECM inputs were digitized and areas calculated

1400000

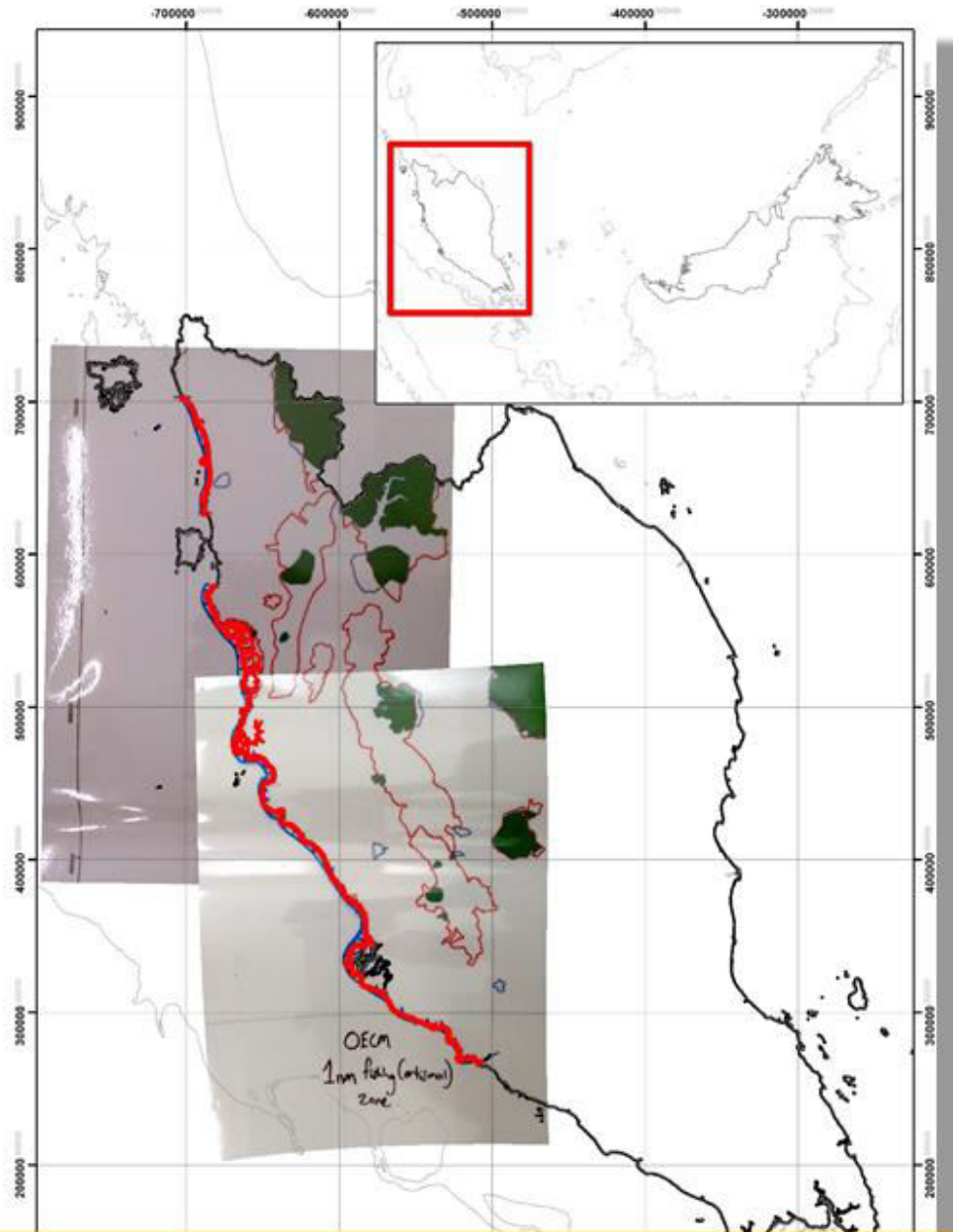
1300000



Estimates of OECMs in Malaysia



Participant's inputs were photographed and overlaid onto a GIS map of Malaysia



OECM inputs were digitized and areas calculated (based on the 1nm buffer description)



Estimates of OECMs in the Philippines



Participants from the Philippines drew a rough sketch of OECMs and Connectivities during the exercise.

They will yet submit matrix and lists form Local Government Units for Local Conservation Areas and from other sources from the environment ministry for Indigenous Community Conserved Areas.

Action Plans of ASEAN Member States

ASEAN

Actions from 2018-2020

Indonesia

To strengthen the management of forest areas, esp. KBAs through regular consultation with NGOs; To conduct regular implementation of METT; To expand marine protected area to achieve 10% target; To increase added value of fisheries and tourism in marine protected areas; etc.

Lao PDR

to identify areas of particular for biodiversity and ecosystem services, esp. for migratory species; consider the connectivity more in the region (e.g. transboundary areas); to designate more protected areas currently managed by local authority/ government/ NGO, etc.

Malaysia

To expand the representativeness of terrestrial and marine protected area network; To strengthen the implementation of the CFS Master Plan in Peninsular Malaysia

Myanmar

To update and validate proposed Protected Area maps, etc.

Philippines

To update protected area maps, and document ICCA; To complete the protected area masterplan, etc.

Singapore

To review the term "KBA" in terms of its relevance and context to Singapore

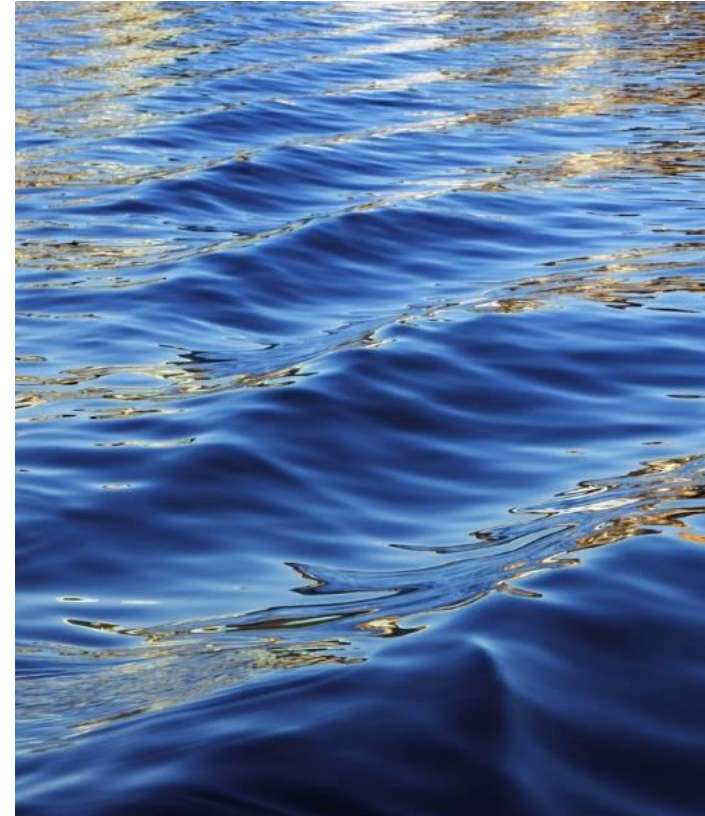
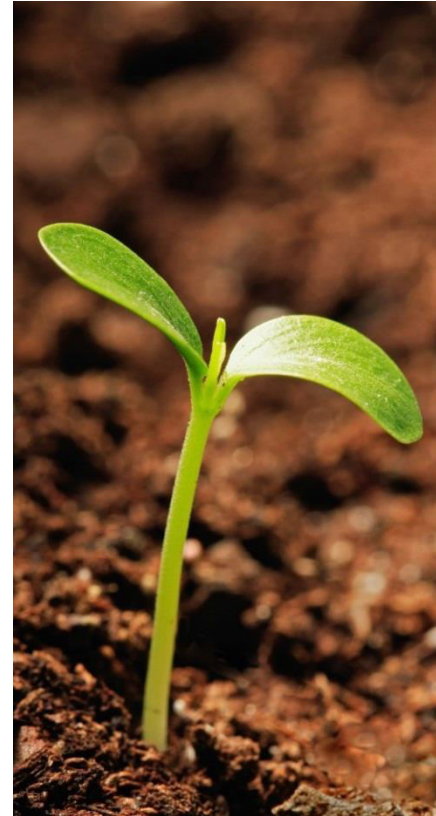
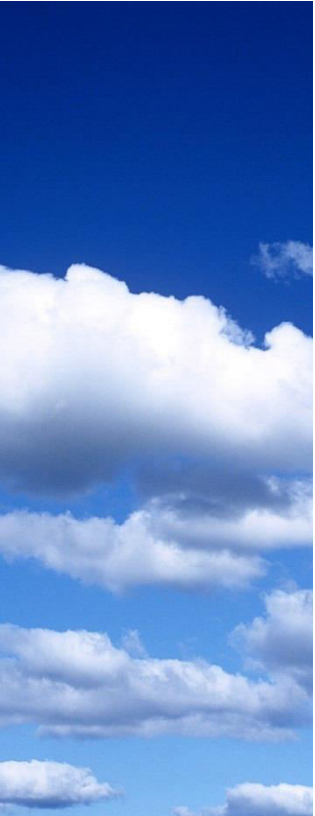
Thailand

Increase the coordination for TBPA; To enhance understanding of OECM, KBA, BIA, Green List; To promote and support community ownership; etc.

Opportunities - Partnerships

- AMS, AFN
- ACB Programmes (AHP, BCAMP, SGP)

- Partners
- CBD Secretariat
- EU, Germany, India, ASEAN + 3
- IUCN APAP
- FFI, WCS, EAFFP
- GEF (UNDP, UNEP, WB, ADB)





ISB | Institutional Strengthening
of the Biodiversity Sector
in ASEAN

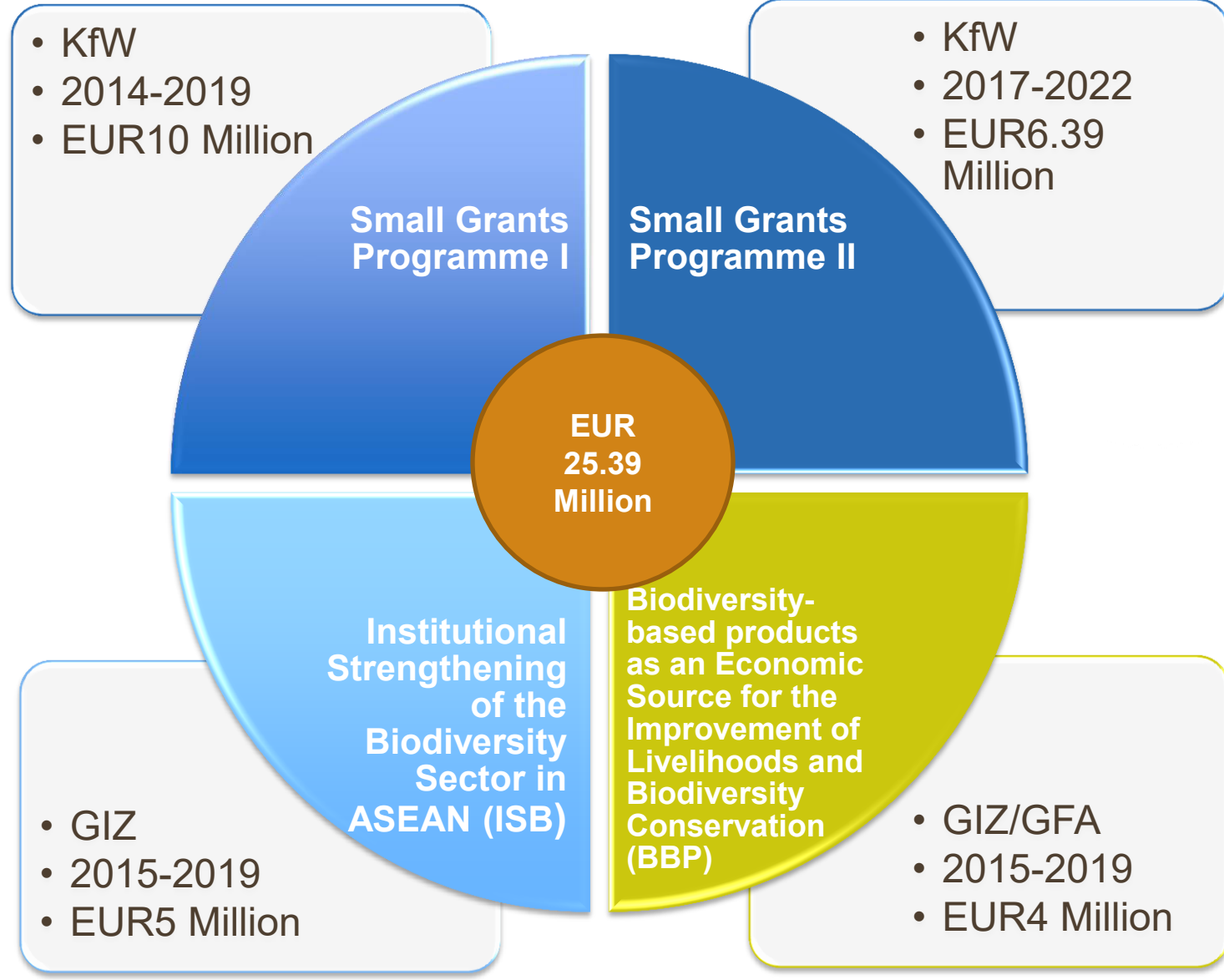
BBP | Biodiversity-Based Products
as an economic source for the improvement of
livelihoods and biodiversity protection (ASEAN)

SGP | Small Grants Programme
by the ASEAN Centre for Biodiversity
German Financial Cooperation
KfW No. BMZ 2011 66 545



ASEAN –Germany Cooperation

Programme on 'Protection of Biological Diversity in the ASEAN Member States in Cooperation with the ASEAN Centre for Biodiversity (CARE4BioDiv)



EU Cooperation: Biodiversity Conservation and Management of Protected Areas in ASEAN 2017-2020

Overall Objective

Supported global sustainability by ensuring ASEAN's rich biological diversity is conserved and sustainably managed toward enhancing social, economic, and environmental well-being.

Specific Objective

Enhanced conservation of biodiversity and effective management of protected areas in Southeast Asia to halt or significantly reduce biodiversity loss.

Component 1 Site

Output 1

Improved effectiveness of biodiversity conservation and PA management

Component 2 Enabling National Supports

Output 2

Developed and mobilized knowledge and scientific basis for biodiversity conservation

Output 3

Mainstreamed biodiversity conservation into development plan and education system

Component 3 Regional

Output 4

Strengthened capacity of ACB to support regional agenda and AMS

The Asia Protected Areas Partnership (APAP)



- APAP is a regional platform for promoting collaboration, best practices and experience sharing on the protected areas of Asia.
- Membership is primarily composed of government PA agencies in Asia, at national and sub-national levels.
- APAP now has 17 Country Members from 14 countries and one Associate Member:
Bangladesh, Bhutan, Cambodia, China, India, Japan, Malaysia, Mongolia, Myanmar, Nepal, Pakistan (2), Republic of Korea (2), Sri Lanka (2) and Vietnam
- APAP is co-chaired by IUCN and a government member on a rotational basis (currently the Ministry of Environment, Republic of Korea).

The Asia Protected Areas Partnership (APAP)

Promoting regional collaboration, best practices and innovative solutions for Asia's protected areas



- **APAP seeks to:**
 - Provide a forum in which Asian PA agencies can share experience
 - Promote best practices and innovative solutions to the challenges facing the region's PAs
 - Enhance transboundary and regional cooperation
 - Raise awareness of the benefits of Asia's PAs
- **APAP has developed rapidly, from just an idea in 2013 to a fully-fledged, Asia-wide, partnership in 2018 - and is continuing to grow.**
- **APAP has demonstrated that it can serve as a regional platform for building capacity and sharing best practices, e.g., through its technical workshops on management effectiveness and other topics.**
- **APAP has great potential to build on these foundations and to help countries achieve Aichi Target 11.**

Promoting regional collaboration, best practices and innovative solutions for Asia's protected areas

