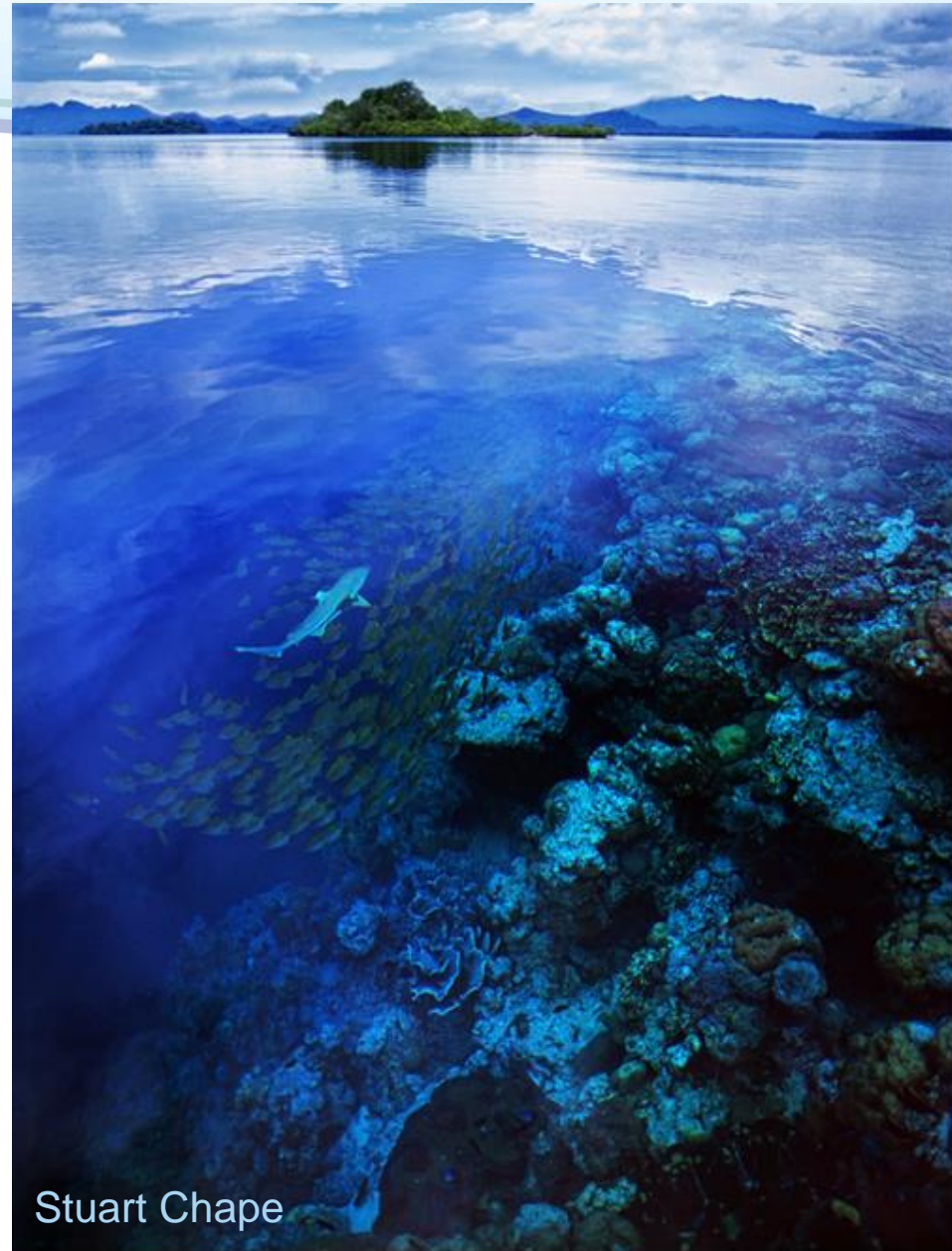


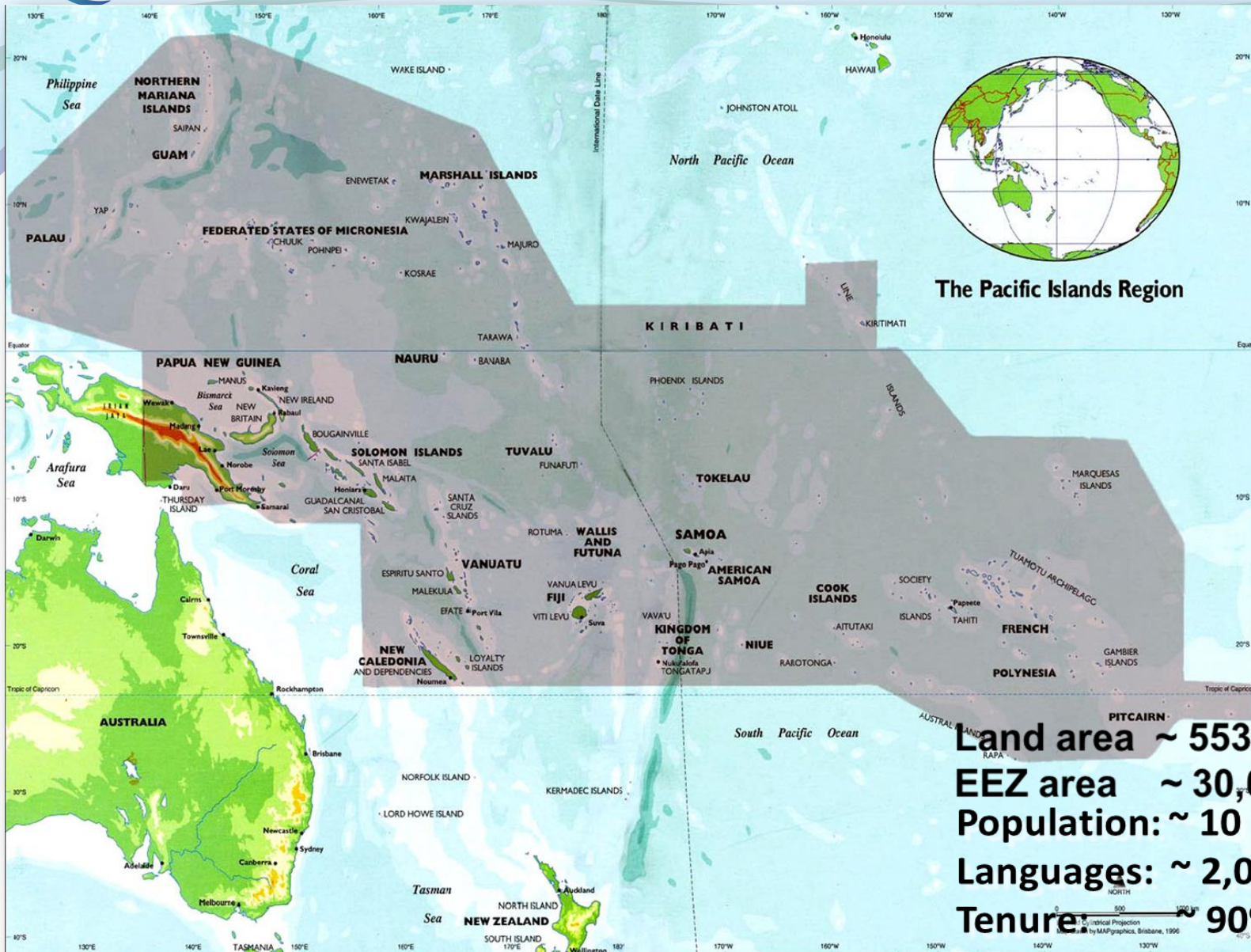
Pacific Islands Protected Areas Regional Support Mechanism

*Paddling the canoe in
the one direction*



Stuart Chape

The Pacific Islands Region



The Pacific Islands Region

Land area ~ 553,000 km²
EEZ area ~ 30,000,000 km²
Population: ~ 10 million
Languages: ~ 2,000
Tenure: ~ 90% customary

Pacific island people reliant on natural resources



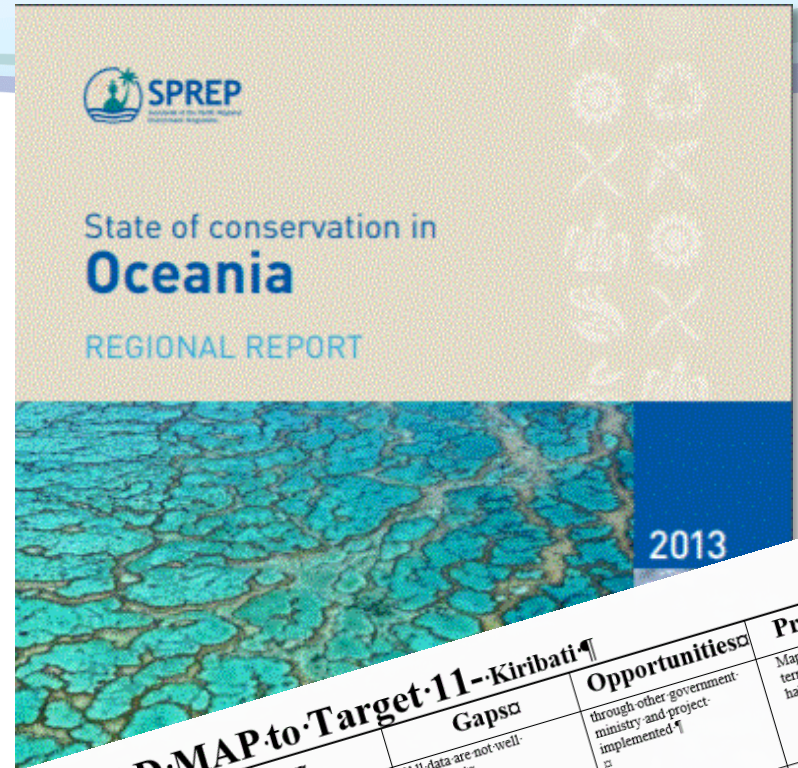
70-80% of the catch from inshore fisheries is used for subsistence purposes

Challenges

- Political willingness
- Fragmented coordination
- Complex land tenure
- Insufficient baseline information
- Lack of knowledge and awareness of the value of biodiversity
- Protected area declaration and financing
- Low capacity
- Inadequate policy and regulatory framework

Current Status

- State of Conservation-Oceania 2013
- CBD Country Roadmaps 2016
- World Database on Protected Areas
- Pacific Islands Protected Areas Portal
- BIOPAMA Pacific inception workshop, 2018



ROAD MAP to Target 11-Kiribati

Status	Gaps	Opportunities	Priority
<ul style="list-style-type: none"> • biodiversity have exceeded that of +1 by +12% (to be confirmed) 	<ul style="list-style-type: none"> • All data are not well-centralized 	<ul style="list-style-type: none"> • through other government ministry and project implemented • → Fisheries policy • → NBSAP revision 	<ul style="list-style-type: none"> • Mapping bio-terrestrial habitats and • Identify vulnera protect mang Under char Co ve co i • Phoenix Island Protected Area trust funds



708
Protected Areas

2,224,239 km²

158
Terrestrial

27,377 km²


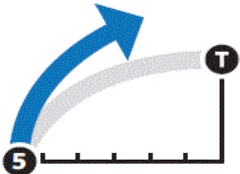
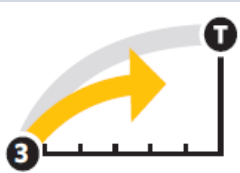



204
Coastal: marine and terrestrial

35,774 km²

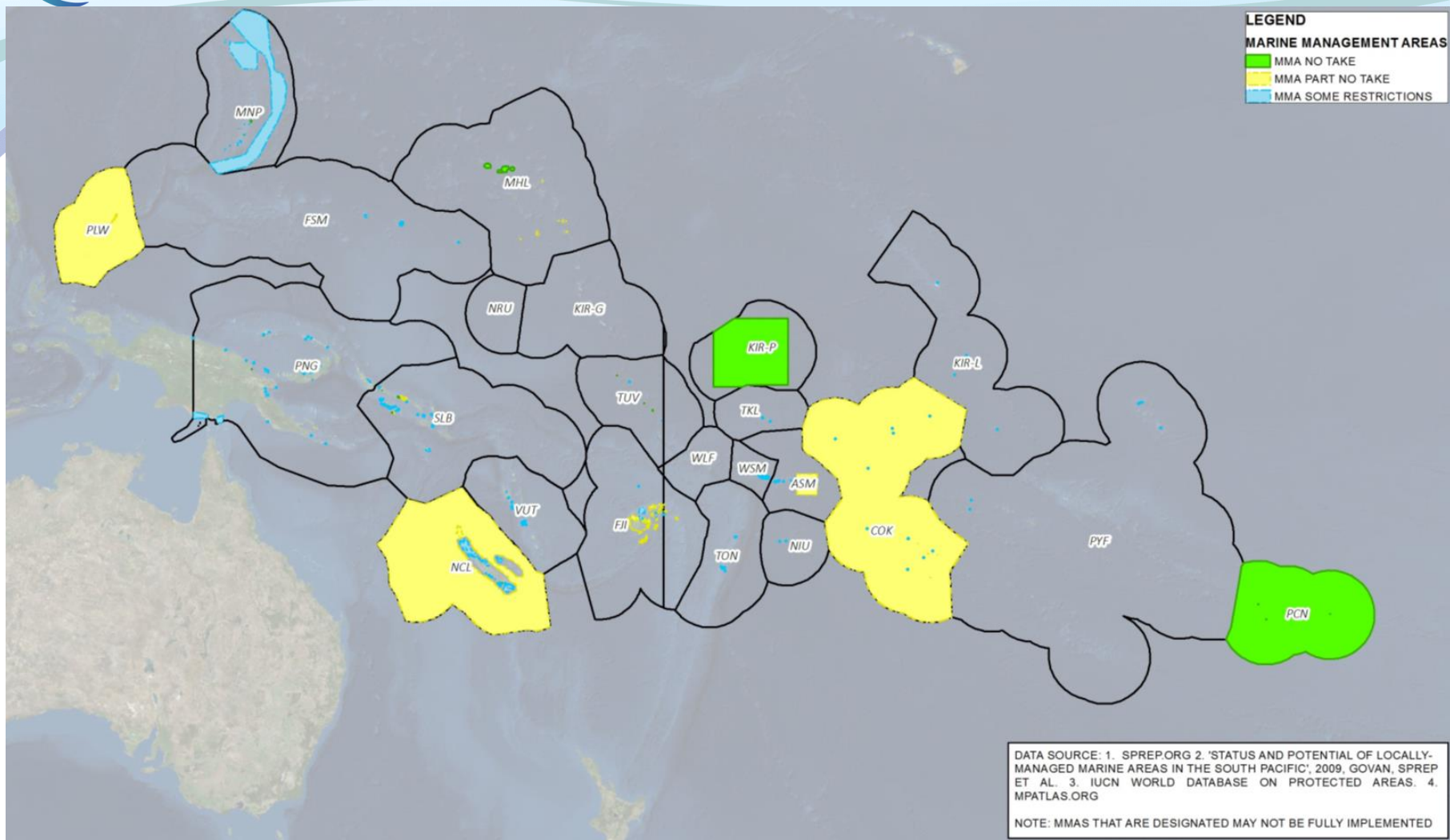
346
100 % marine

2,161,088 km²

Current Status– Pacific

Elements of Target 11	Details	Status	Status narrative
Quantitative targets	Terrestrial protected areas on WDPA		5% of land area protected (WDPA)
	Marine protected areas on WDPA		22% of marine areas protected (WDPA). Target achieved regionally but not nationally
Ecological representation	Endemic or near endemic terrestrial and marine ecoregions protected		Marine: 9 of 22 endemic/near endemic ecoregions have 10% protection Terrestrial: 5 of 27 endemic/near endemic ecoregions have 17% protection
Areas important for biodiversity	Protected area coverage of Key Biodiversity Areas		20% of KBAs covered by protected areas
Management Effectiveness	Effectiveness of protected and conserved areas		Majority of countries have not completed, or not reported, Management Effectiveness Assessments
Governance and equity	Sites with governance type		22% 'unreported' governance

Marine managed areas



MMA % per EEZ Area (SPREP Member Only)

Area	Km2
MMA Sept 2017 (SPREP member inc. Pitcairn)	6,091,419
EEZ Area (SPREP member inc. Pitcairn)	30,413,800
MMA % of total EEZs	20%

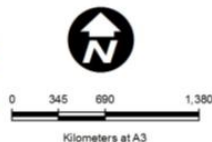


**MARINE MANAGEMENT AREAS
SPREP REGION SEPT 2017**

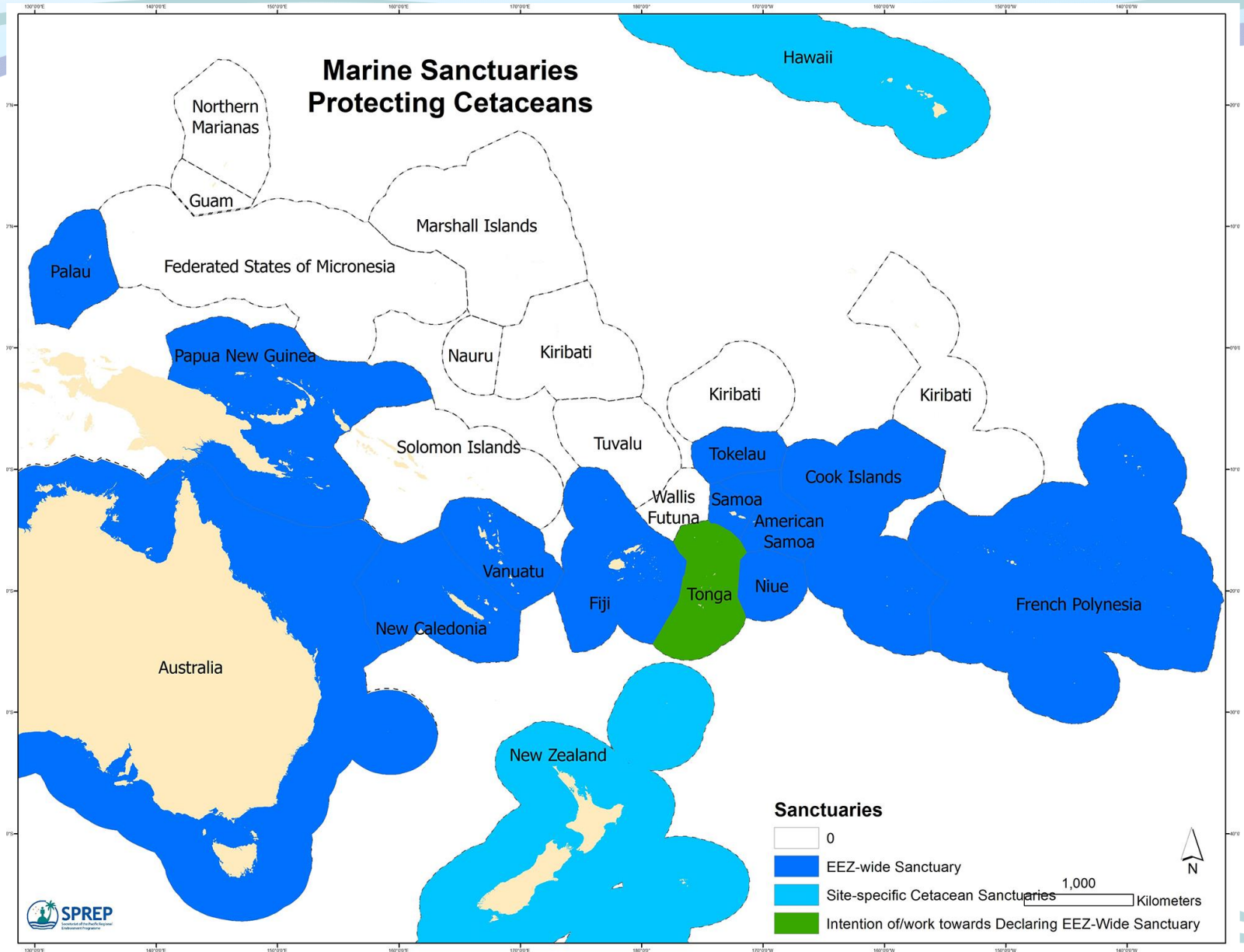
DATE: 07 Sep 2017 SCALE: 1:34,500,000
PROJECT: GENERAL AUTHOR: Ryan Wright
MAP: SPREP-EMG-2017-002_MMAs_SPREP_Sept17.mxd



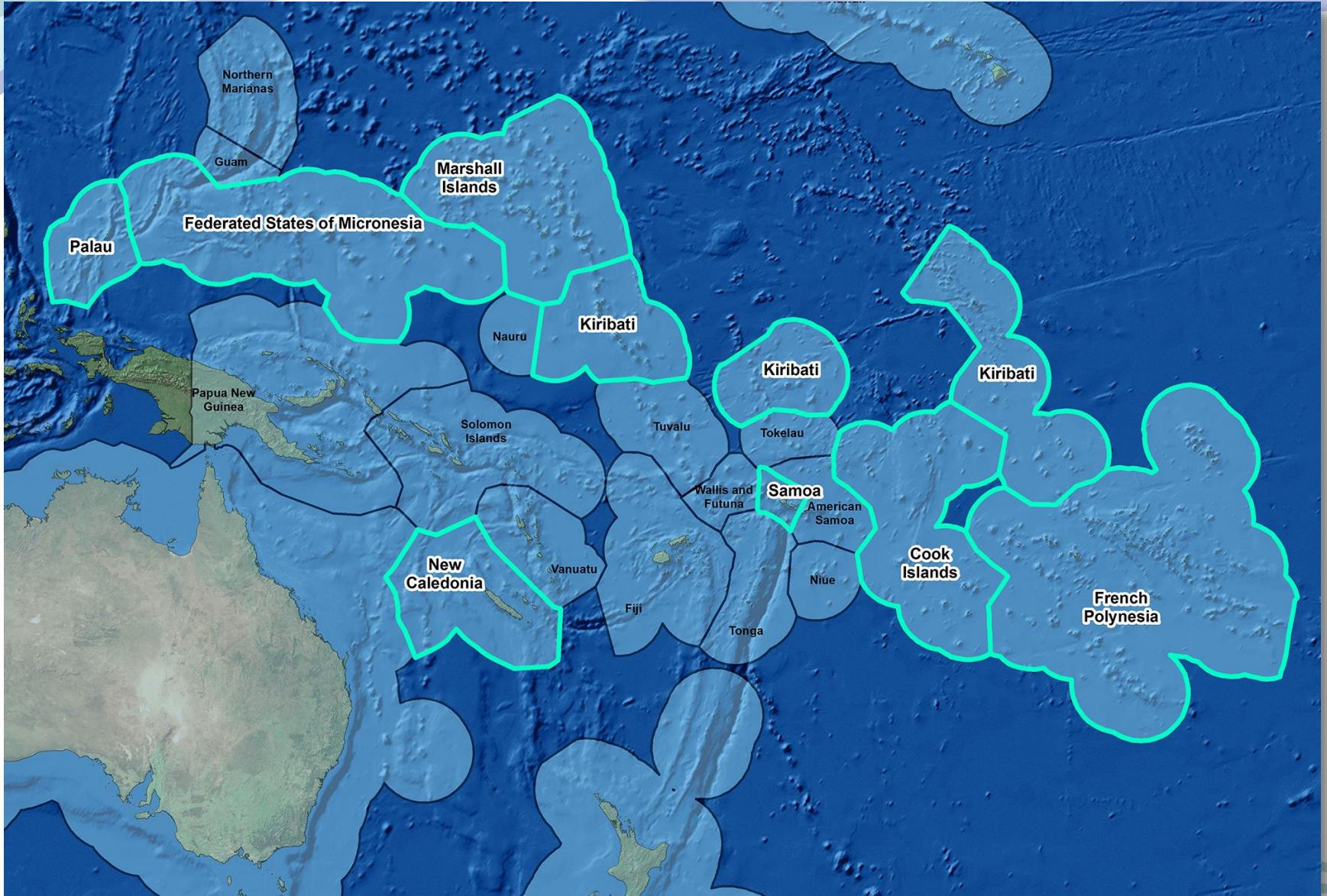
SPREP
Secretariat of the Pacific Regional
Environment Programme



Marine sanctuaries



Shark sanctuaries



Country commitments

- Marine area protection could increase to >40% coverage with all commitments
- Small terrestrial commitments



Gaps and opportunities

- Systematic collection and updating of data
- ‘Unreported’ governance status
- Capturing ‘other effective conservation measures’
- Management Effectiveness Assessments

An aerial photograph of a regatta on a large body of water, likely a bay or harbor. The water is a deep blue-green color. In the foreground, a motorboat with a white hull and yellow accents is moving from the bottom left towards the center, leaving a white wake. Numerous sailboats of various sizes and colors (including yellow, red, and white sails) are scattered across the water, all appearing to be moving in a similar direction. The background shows a dark, forested shoreline under a cloudy, overcast sky.

The Pacific – voyaging in the same direction

- Pacific Island Roundtable for Nature Conservation
- Protected Areas Working Group



Roundtable



Pacific Islands Roundtable
 for Nature Conservation



CBD



WCS



IUCN



The Nature
 Conservancy



Tenkile
 Conservation Alliance



CONSERVATION
 INTERNATIONAL



USP
 THE UNIVERSITY OF THE
 SOUTH PACIFIC



WWF



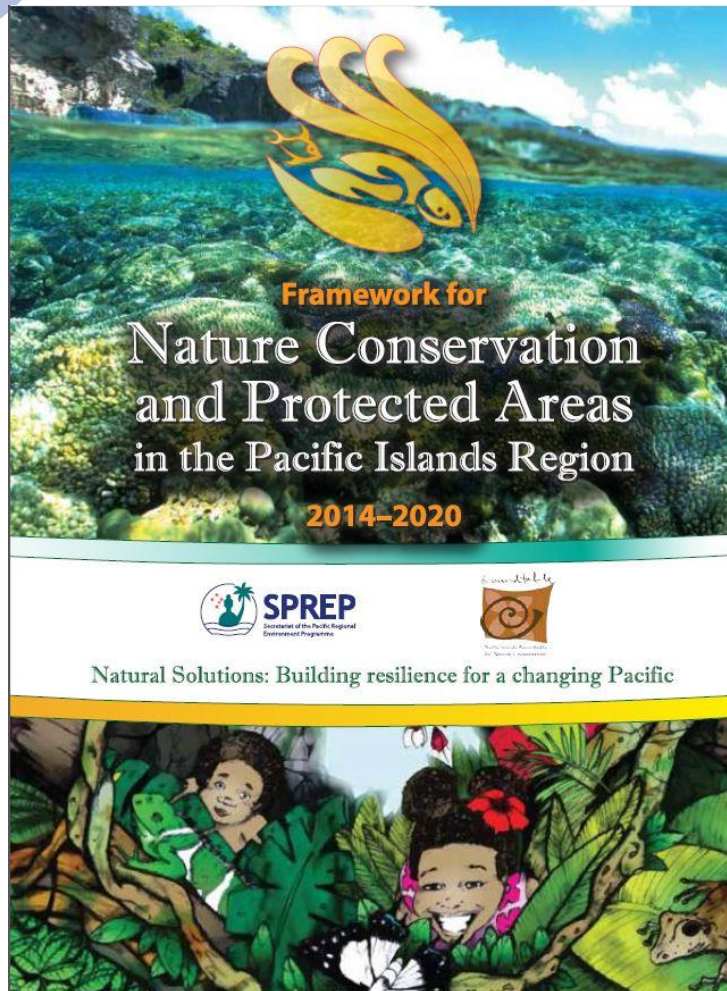
WCMC



United Nations
 Environment Programme

Framework for Nature Conservation and Protected Areas in the Pacific Islands Region (2014 – 2020)

- Regional strategy to achieve NBSAPs, Regional Priorities and Global Aichi Targets
- Goal: Protect and preserve the rich natural and cultural heritage of the Pacific Islands for the benefit of people of the Pacific and the world.



Protected Areas Working Group

- Instrumental in supporting countries to develop *Roadmaps for Aichi Targets 11 & 12*
- Pacific Islands Action Plan for Aichi Target 11, 2018

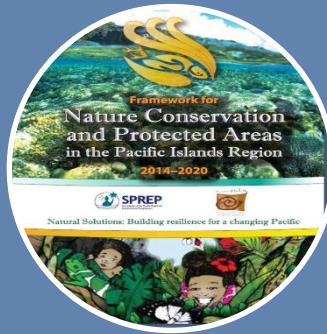


Pacific Islands Action Plan for Aichi Target 11



Aichi Target 11

GLOBAL



Framework for Nature
Conservation and
Protected Areas

REGIONAL



Protected Areas
Working Group Action
Plan

NATIONAL



Protected Areas Programme

- Pacific Islands Protected Area Portal
- Technical support and capacity building
- Partnerships, coordination and networking
- Advocacy, outreach and strategic communication
- Project management and implementation

Achieving Aichi Target 11 with SPREP
Protected Areas in the Pacific islands region



Protected Areas Programme

Pacific Islands Protected Area Portal



708

Protected Areas

2,224,239 km²

158

Terrestrial

27,377 km²

204

Coastal: marine and terrestrial

35,774 km²

346

100 % marine

2 121 000 km²

BIOPAMA

From Knowledge to Action for a Protected Planet



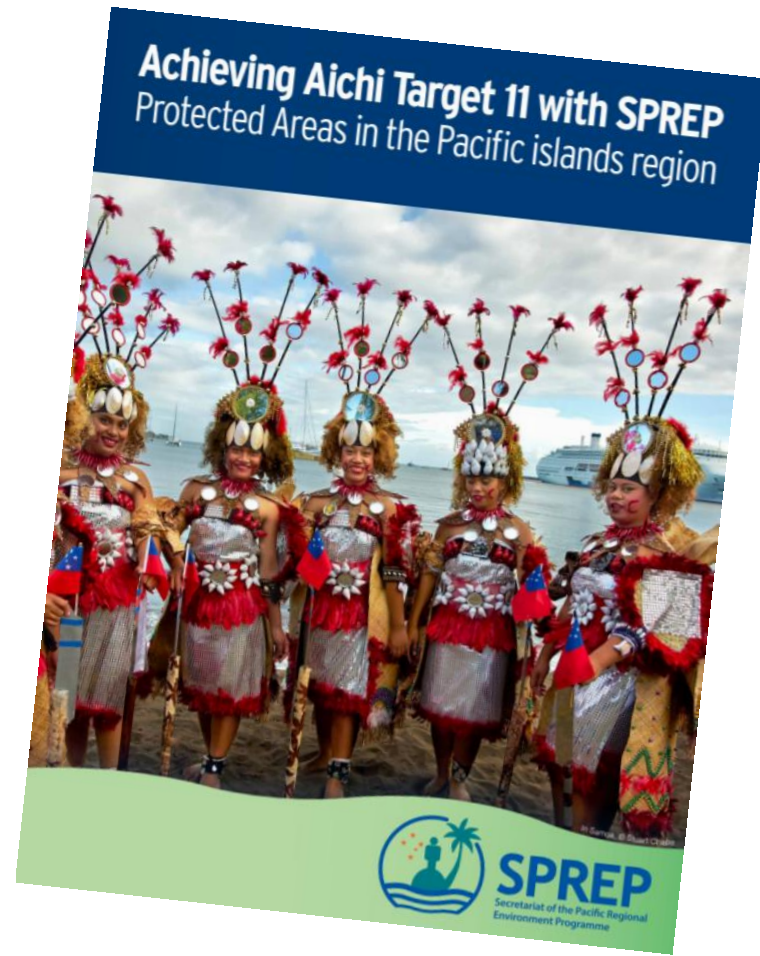
An initiative of the ACP Group of States financed
by the European Union's 11th EDF

pipap.sprep.org

Protected Areas Programme

TECHNICAL SUPPORT

- Marine Spatial Planning
- Invasive Species management
- Ecosystem based adaptation
- Biodiversity assessments
- Protected Area Management Effectiveness
- MEA implementation and reporting



Protected Area Programmes - Projects

BIO PAMA

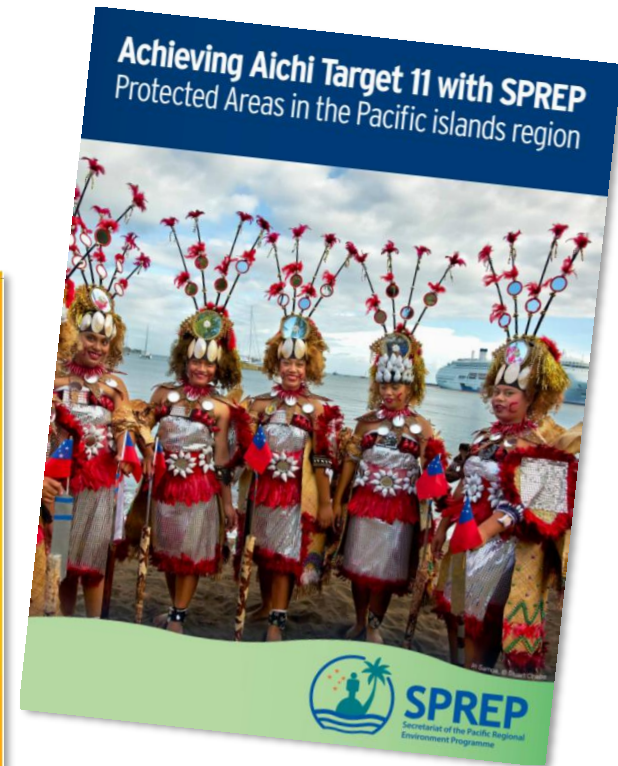
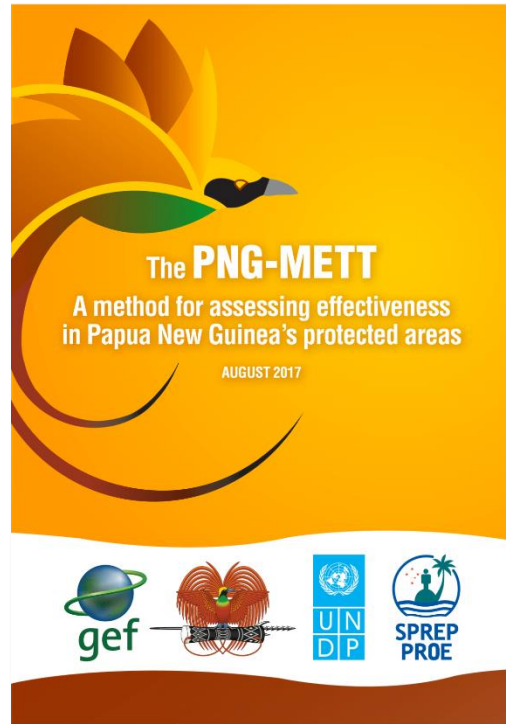
From Knowledge to Action for a Protected Planet



An initiative of the ACP Group of States financed
 by the European Union's 11th EDF

MACBIO

Marine and Coastal Biodiversity Management
 in Pacific Island Countries



10th Pacific Islands Nature Conference

New Caledonia, 20-24th April 2020



Integral part of the regions voyage to 2020, and beyond



Thank you

Stuart Chape