

# PRESENTATION ON INCENTIVE MEASURES

## SOME PROBLEMATIC CLIMATIC CHANGE

**Factors Seriously Affecting Biodiversity and Food Security  
in Cameroon and the Central African Sub-Region.**

***“Some Positive Incentive Measures” initiated.***

**By: NJINYAM STEVEN NGWA**

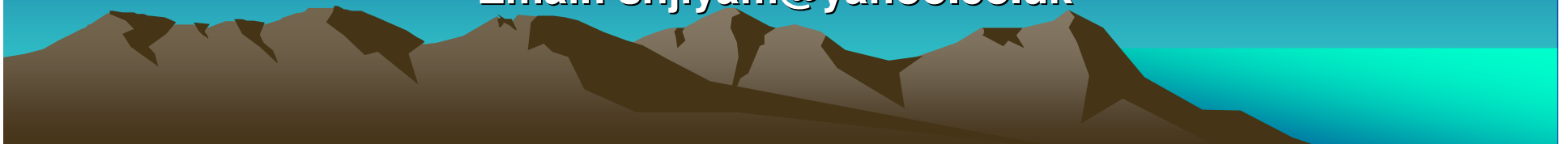
**Senior Agricultural Officer & Former Minister of Agriculture,**

**Technical Adviser;**

**Bioresource Development and Conservation**

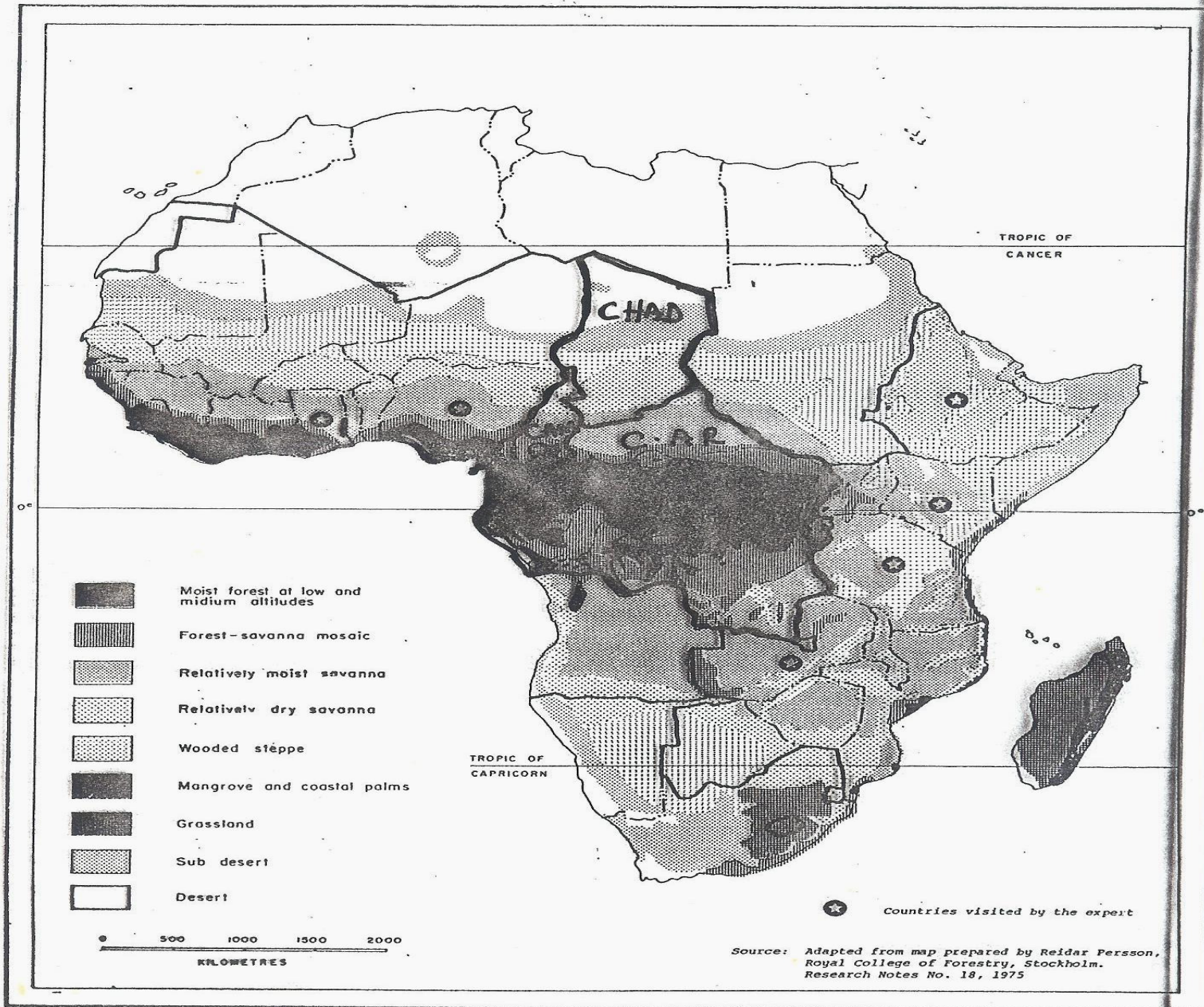
**Program-Cameroon.**

**Email: [snjiyam@yahoo.co.uk](mailto:snjiyam@yahoo.co.uk)**



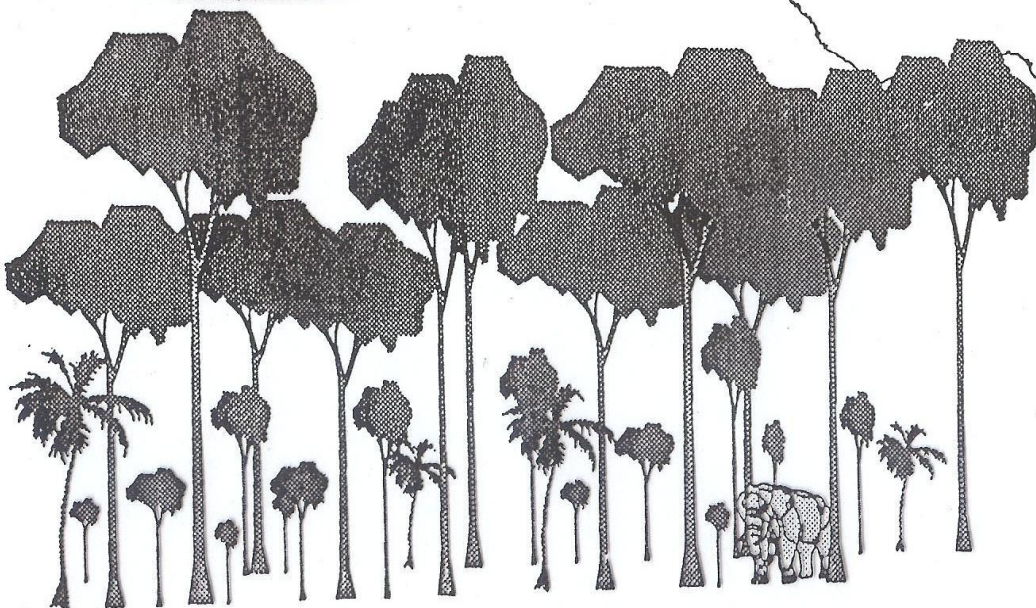
# FOREST RESOURCES OF AFRICA

## SOUTH OF SAHARA



# Central African Regional Program for the Environment

---



# Twenty Year Goal

---

- ◆ To reduce the rate of deforestation of the tropical forests of the Congo Basin and conserve the biodiversity contained within them. Thus, in the long term, avert potentially negative changes in global and regional climate

**ASSOCIATION pour le  
DEVELOPPEMENT de  
L'INFORMATION  
ENVIRONNEMENTALE**



**PROGRAMME REGIONAL  
DE GESTION DE  
L'INFORMATION  
ENVIRONNEMENTALE**



*Plaquette réalisée avec l'appui du Ministère français des Affaires Etrangères.*



# SAHELIAN ZONE OF CEMAC

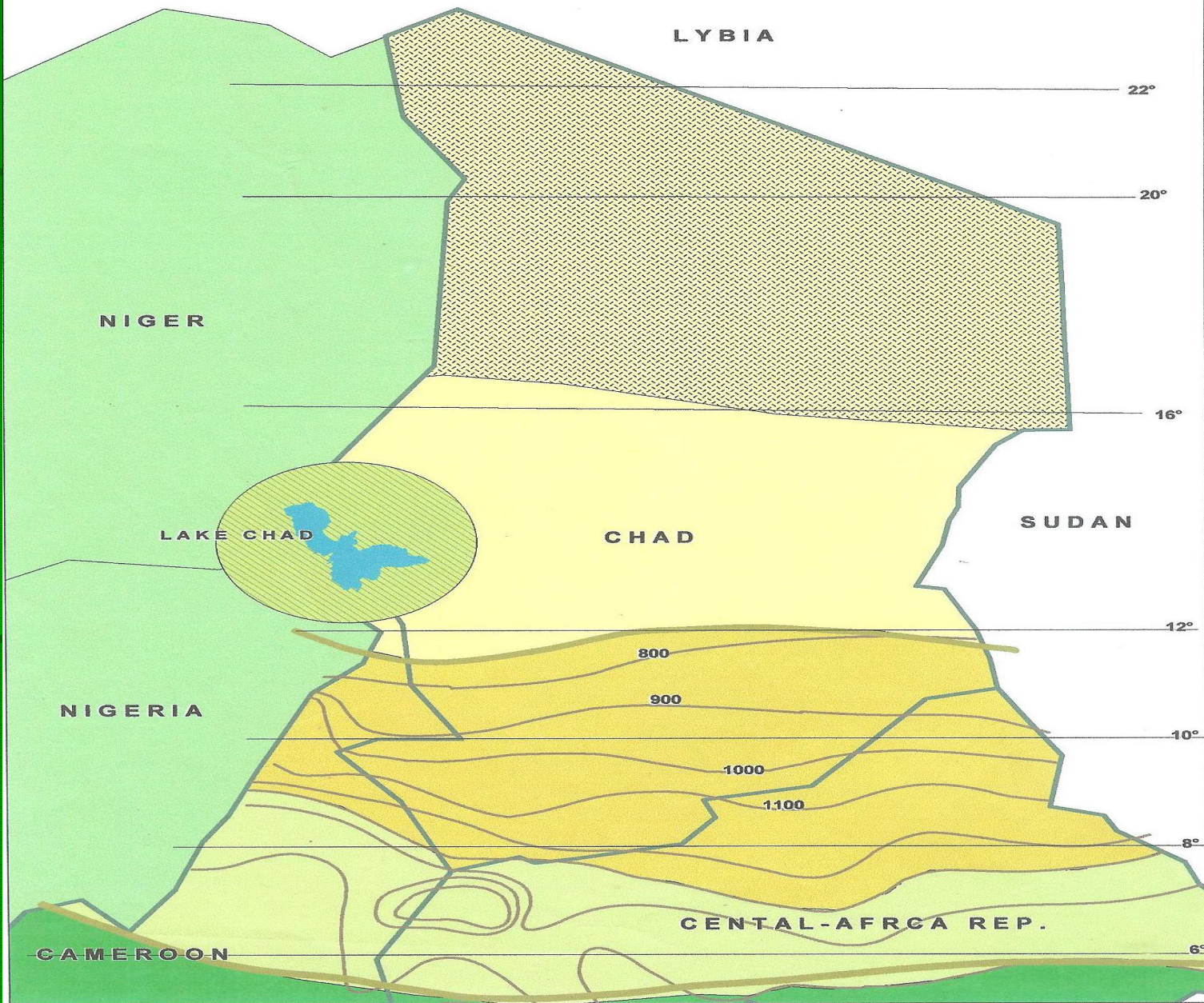
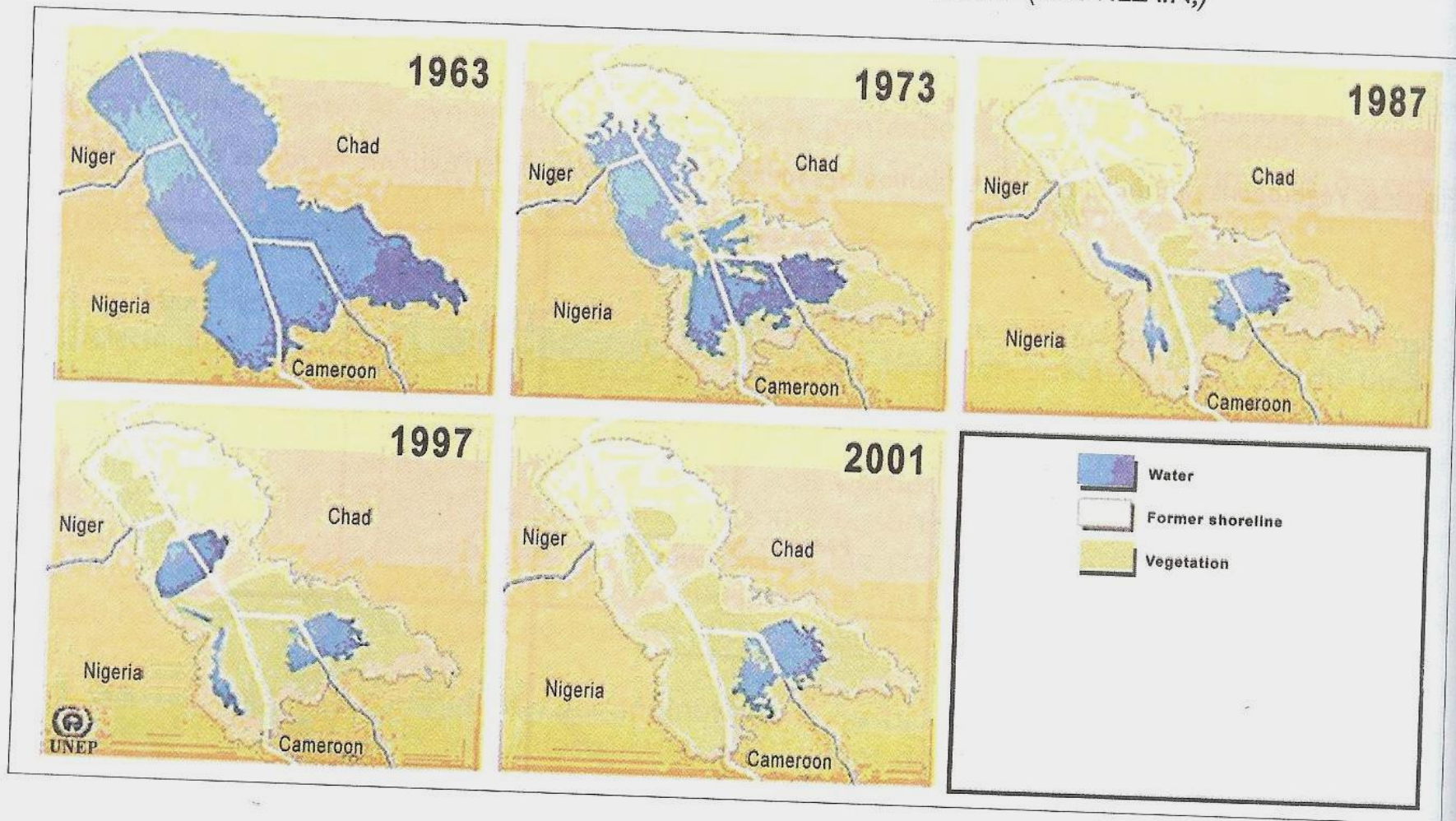




Figure 7. Les variations du niveau du Lac Tchad au cours du dernier millénaire (BAUVILLAIN,)



5.2. Sols





Yaérés de la zone de Waza-Logone (photo ACCEN)

Photo 3. Pâturages sur champs après récoltes et anciens champs



(Pfeiffer, R, 2006)

Or, la

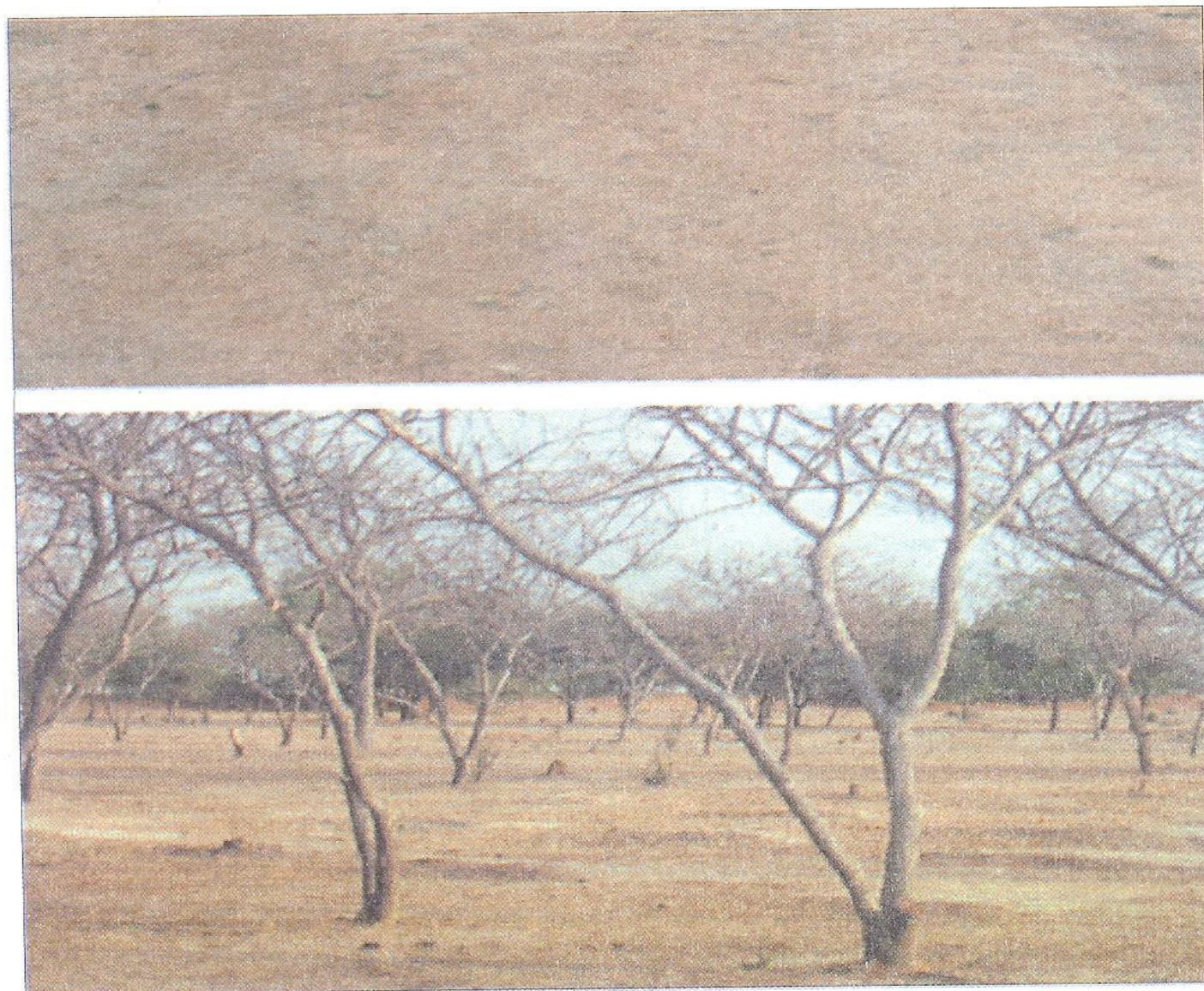
raison de sécheresse est longue et malgré le déplacement des troupeaux, il y a surexploitation des écosystèmes

# Locusts



suivante montre un hardé typique.

Photo 7. Hardé typique en train d'être réhabilité



(Foahom, 2006)

*Photo 5. Transporteurs de bois de chauffe (10 Km avant la ville de Maroua)*



(Pfeiffer, R, 2006)

Dans le Lac Tchad, environ 70 espèces migratoires font des escales parmi lesquelles le garganey, le pilet et la collerette, les échassiers noirs, l'ibis luisant, la grue couronnée, les cigognes blancs et noirs.



Marabouts au parc national de waza



Famille d'éléphants au parc national de Waza (photo)



**Girafe au parc national de Waza**

Photo 12.

*Premiers signes de l'érosion due à la mise en culture des pentes fortes sans mesures adéquates contre l'érosion*



(Reinhard Pfeiffer, 2006)

# CONVENTIONS; POLICIES LAWS AND REGULATIONS

- Conventions ratified;
- CBD;
- UNFCCC;
- UNCCD;
- CITES
- Ramsar convention on wetlands;
- CBLT;
- COMIFAC,
- CMS
- UNCLOS, etc

PROBLEM OF ENSURING COMPLIANCE TO THE MEAs DUE TO  
WEAK CAPACITY

# Policies

- NEMP or PNGE- National Enviro. Management Plan;
- PSFE - SECTORIAL PROG FOR THE FOREST AND ENVIRONMENT SECTOR.
- NBSAP – National Biodiv. Strategy and Action Plan;
- National Action Plan on Forestry;
- National Action Plan on Desertification;
- National Communication on Climate Change
- Green Sahel Programme – Re- afforestation and provision of improved stoves/cookers
- POVERTY REDUCTION STRATEGY,
- RURAL SECTOR DEVELOPMENT STRATEGY:

# LAWS

- Forestry; Wildlife and Fishery Law
- Environmental law
- Pesticide law
- Biosafety Law
- Seed Certification Law;
- Imminent creation of national Climate change Observatory for Cameroon

# Types of incentive measures

- Cognitive- consultative; decorative, consultative; partnership; not confrontative
- In kind- provision of social programmes and projects eg health; schools; roads; employment; sporting infrastructures etc/
- Monetary- funding of activities and the fair and equitable sharing in the benefits of conservation;
- Gender factor must be fully considered:

# Existing incentive measures

- Community Forest Programme – attribution of parts of the forest to local communities for management;
- Redistribution of forest revenues –concession areas;
- Training and equipment of new generation fishermen on sustainable fishing practices;
- Domestication of some wildlife species and distribution to farmers at low cost eg cain rats; quails; mushrooms snails etc
- Introduction of wheat cultivation by cattle rearers;

# Proposed incentives

- Implementation of environmental democracy – public participation; access to information and access to environmental justice,
- Fully taking into account the ITK;
- Equitable sharing of benefits derived from conservation by ILCs,
- Enhanced role of various stakeholders, the civil society and NGOs ensuring transparency;
- On the spot needs assessment before allocation of adequate funding by the international community;
- GEF ENCOURAGED TO EFFECTIVELY PLAY ITS ROLE AS THE FINANCIAL MECHANISM OF THE 3 RIO CONVENTIONS BY AVOIDING CONSTRAINING CONDITIONALITIES;
- ADEQUATE CARBON CREDIT FUNDING TO COUNTRIES/REGIONS WHOSE FORESTS CONSTITUTE CARBON SINK LIKE THE CBF

# **END**

**THANK YOU FOR YOUR KIND ATTENTION.**

**By: NJINYAM STEVEN NGWA**

**Senior Agricultural Officer & Former Minister of Agriculture**

**Technical Adviser**

**Bioresource Development and Conservation Program-Cameroon.**

**Email: [snjiyam@yahoo.co.uk](mailto:snjiyam@yahoo.co.uk)**