



# **AFRICACAPACITY-BUILDING WORKSHOP ON MAINSTREAMING BIOSAFETY INTO NATIONAL BIODIVERSITY STRATEGIES AND ACTION PLANS**

---

**Workshop Objectives  
Expected Outcomes, and  
Organization of Work**

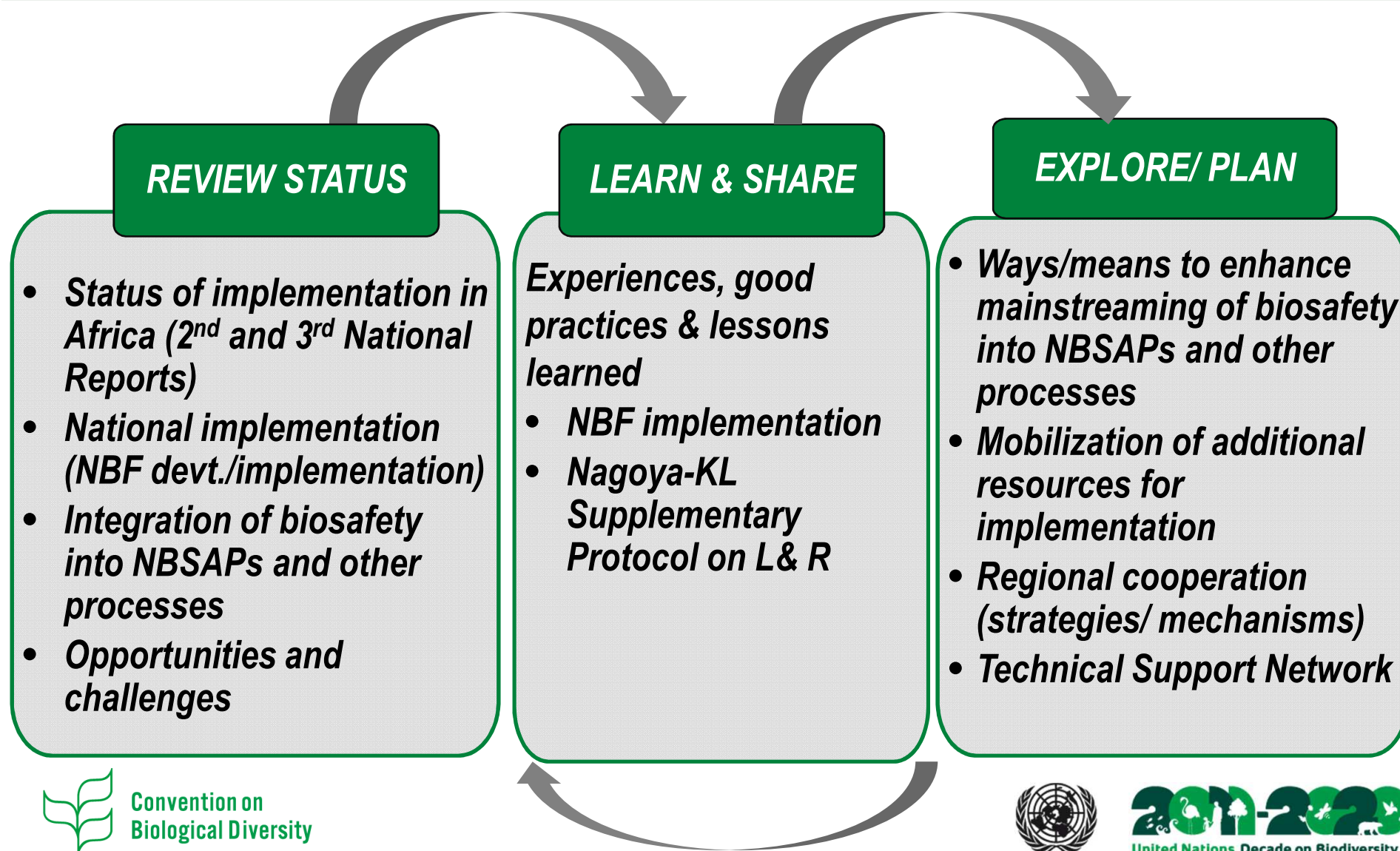
---

**Erie Tamale  
Programme Officer, CBD Secretariat**

# Workshop Objectives/Outcomes



Japan Biodiversity Fund





# Organisation of Work



Japan Biodiversity Fund

**10 February 2016**

- Integration of biosafety into NBSAPs & and NDPs: Rationale and strategies
- Examples of biosafety integration into NBSAPs
- African Union Commission MEA project: NBSAPs
- Group discussions: Country experiences and lessons learned
- Practical steps/points to consider in mainstreaming biosafety into NBSAPs
- Country presentations (Last group)
- Individual exercise: entry points for biosafety integration into NBSAPs and NDPs



# Organisation of Work



Japan Biodiversity Fund

**11 February 2016**

- Resource mobilization in the context of the Convention: Recent developments
- Group discussions: Ways and means of mobilizing more resources for biosafety
- Status & opportunities for broadening GEF support for biosafety under the STAR (presentation & discussions)
- core provisions of the Nagoya – Kuala Lumpur Supplementary Protocol on Liability and Redress
- Measures and capacities needed implement the Supplementary Protocol

# Organisation of Work



Japan Biodiversity Fund

12 February 2016

Way forward:

- Fostering regional cooperation on biosafety
- Increasing the visibility and political support for the Protocol
- Aligning CPB with national strategies for achieving the SDGs
- Pilot projects on mainstreaming biosafety
- Workshop evaluation and closure





- 
- Convention on  
Biological Diversity**



## For Further Information Contact:



Japan Biodiversity Fund

### Secretariat of the Convention on Biological Diversity



413 Saint Jacques Street, Suite 800

Montreal, QC, H2Y 1N9, Canada

Tel: +1 514 288 2220

Fax: + 1 514 288 6588

Email: [secretariat@cbd.int](mailto:secretariat@cbd.int)

Protocol URL: <http://bch.cbd.int/protocol>

PAEP tools in the BCH:

[http://bch.cbd.int/onlineconferences/portal\\_art23/pa\\_main.shtml](http://bch.cbd.int/onlineconferences/portal_art23/pa_main.shtml)