



# Convention on Biological Diversity

Distr.  
GENERAL






25 January 2012

ENGLISH ONLY

MEETING OF THE SUB-WORKING GROUPS OF THE AD HOC  
TECHNICAL EXPERT GROUP ON RISK ASSESSMENT AND RISK  
MANAGEMENT OF LIVING MODIFIED ORGANISMS  
Bonn, Germany, 13-15 February 2012

## Information Note for Participants

**QUICK LINKS (Press Control and click on icons for direct access to text in document)**

 <b>Documents (page 2)</b>
 <b>Visa Information (pages 3, 7)</b>
 <b>Hotel Information (page 3)</b>
 <b>Weather Information (page 5)</b>
 <b>Currency Information (page 5)</b>

## INFORMATION HIGHLIGHTS

1. OPENING OF THE MEETING.....	2
2. VENUE .....	2
ANNEX A - VENUE INFORMATION.....	6
4. DOCUMENTS .....	2
5. GENERAL INFORMATION ON ACCESS TO BONN .....	2
6. VISA INFORMATION .....	3
ANNEX B - COUNTRY LISTING.....	7
7. HOTEL INFORMATION .....	3
10. WEATHER AND TIME ZONE INFORMATION .....	5

## 1. Opening of the meeting

The Meeting of the Sub-working Groups of the Ad Hoc Technical Expert Group on Risk Assessment and Risk Management of Living Modified Organisms will be held in Bonn, Germany from Monday, 13 to Wednesday, 15 February 2012.

The meeting will start at 9:00 a.m. on Monday, 13 February 2012.

## 2. Venue

The meeting will be held at:

### **German Federal Agency for Nature Conservation (BfN)**

Konstantinstr. 110

53179 Bonn, Germany

Tel: +49 (0)228 8491-0

Fax: +49 (0)228 8491-9999

See annex A for detailed information on how to reach the BfN.

## 3. Working language of the meeting

The workshop will be held in English.

## 4. Documents



Participants are kindly reminded to bring their own copies of the pre-session documents for the meeting as there will be no extra copies made available on site. Pre-session documents will be circulated by the Secretariat in due time. Documents can be found at the following link: <http://www.cbd.int/doc/?meeting=BSRARM-SWG-01>

## 5. General information on access to Bonn

There are several airports servicing the Bonn/Cologne area. Participants may arrive from one of the airports close to Bonn. They are listed below.

### **Airports**

#### **Cologne/Bonn Airport (CGN) is the nearest airport to the venue; Distance: 35 km**

The Airport Express bus line SB60 takes passengers from the Airport to Bonn central station in approx. 25 minutes every 30 minutes on weekdays, and at half-hourly or hourly intervals on weekends. Departure: Terminal 2/ ground level/ D.

#### **Düsseldorf Airport (DUS); Distance: 90 km**

The Sky Train runs between the terminal and the “Flughafen” airport railway station at 3 – 7 minute intervals from 3.45 a.m. until 0.45 a.m. daily. From the “Flughafen” airport railway station, direct trains to Bonn-Bad Godesberg station are available every hour.

#### **Frankfurt Airport (FRA): Distance; 150 km**

The long-distance railway station is at the AIRail Terminal, right next to Terminal 1. The station is also linked to Terminal 2 via buses and the Sky Line. From the AIRail there are IC trains available to Bonn central station (1 hour 45 min travel time; the train departs every two hours) or Koblenz central station (1 hour 15 min travel time; the train departs every hour till midday). At Koblenz station, change trains to Bonn-Bad Godesberg station. RE or MRB trains are available twice per hour, the travel time amounts to 40 min with RE and 60 min with MRB trains. Also departing from the AIRail Terminal is a fast running

ICE train to the station “Bonn-Siegburg”. Travel time to Siegburg is 40 min, trains depart hourly. From Siegburg take tram line 66 to Bonn central station (only one direction possible; travel time approx. 25 min).

### **Taxi**

Taxis are available at the airports, Bonn central station, and the station “Siegburg” as well as the station “Bonn-Bad Godesberg”. The fare to the venue/hotels is approx. 50 € for Cologne-Bonn airport, 30 € for train station Bonn-Siegburg, 15 € for Bonn central station, and 6 € for Bonn-Bad Godesberg station.

### **Tram and Bus**

From Bonn central station, please use regional trains to Bonn Bad Godesberg (ca. 8 minutes) or tram line 16 or 63 in direction of ‘Bad Godesberg’ (ca. 25 minutes). Exit at Bad Godesberg station and take a bus (lines 613 or 615) in direction “Mehlem, Giselherstr”. The closest bus stop to the venue is “Wendelstadtallee”.

## 6. **Visa information**



Participants from countries listed in **annex B** below require a Schengen entry visa for Germany and are strongly advised to contact the nearest German diplomatic or consular mission **as soon as possible** in order to secure the required entry visa in a timely manner, prior to departure. **It should be noted that airline companies will not allow boarding in the absence of a valid visa.**

Information on visa procedures, including a list of relevant German diplomatic/consular missions abroad, and the visa application form are available on the website of the German Federal Foreign Office at:

[http://www.auswaertiges-  
amt.de/diplo/en/WillkommeninD/EinreiseUndAufenthalt/Visabestimmungen.html](http://www.auswaertiges-<br/>amt.de/diplo/en/WillkommeninD/EinreiseUndAufenthalt/Visabestimmungen.html)

Participants requiring an entry visa to Germany should attach, as appropriate, to their visa application forms (available at the above web link), duly completed and signed, the following:

- One passport size photograph;
- Valid passport (with an expiry date no less than six months from the date of entry into Germany);
- Letter from the CBD Secretariat (to be issued upon request).

To facilitate the issuance of visas the Secretariat will issue upon request an invitation letter to be attached to the relevant visa application.

## 7. **Hotel information**



Below please find a list of suggested hotels in the vicinity of the meeting venue. Participants are **responsible for making their own hotel reservations.**

**Rheinhotel Dreesen GmbH** (1.2 Km from BfN)

Rheinstraße 45 – 49, Bonn

Tel: +49 (0)228 82020

Web: [www.rheinhoteldreesen.de](http://www.rheinhoteldreesen.de)

Single room starting at 130 Euros/night

As the Hotel is located bank side, most of the rooms have the added advantage of a wonderful view of the river Rhine and the Siebengebirge range of hills

**Hotel Kronprinzen** (1.7 Km from BfN)  
Rheinallee 29, Bonn  
Tel: +49 (0)228 93552-0  
Web: [www.kronprinzen-bonn.de](http://www.kronprinzen-bonn.de)  
Single room starting at 90 Euros/night

**Hotel Rheinland** (1.8 Km from BfN)  
Rheinallee 17, Bonn  
Tel: +49 (0)228 82000-0  
Web: [www.hotel-rheinland-bonn.de](http://www.hotel-rheinland-bonn.de)  
Single room starting at 72 Euros/night

**Hotel Kaiserhof** (2.0 Km from BfN)  
Moltkestrasse 64, Bonn  
Tel: +49 (0)228 957050  
Web: [www.kaiserhof.bestwestern.de](http://www.kaiserhof.bestwestern.de)  
Single room starting at 102 Euros/night

**Hotel zum Adler** (2.1 Km from BfN)  
Koblenzer Strasse 60, Bonn  
Tel: +49 (0)228 763717-0  
Web: [www.hotel-zum-adler.de](http://www.hotel-zum-adler.de)  
Single room starting at 75 Euros/night

**Hotel Eden** (2.2 Km from BfN)  
Am Kurpark 5a, Bonn  
Tel: +49 (0)228 95727-0  
Web: [www.eden-godesberg.de](http://www.eden-godesberg.de)  
Single room starting at 70 Euros/night

The hotels Hotel Kaiserhof, Hotel zum Adler and Hotel Eden are all within walking distance from Bad Godesberg Station (max. 300 m) from where a bus can be taken to get to the venue. The bus lines 613 or 615 in direction “Mehlem, Giselherstr” take approx. 5 minutes to get to the nearest bus stop to the venue “Wendelstadtallee”. In case of the hotels Hotel Rheinland and Hotel Kronprinzen, the bus stop “Kronprinzenallee” of the bus line 615 “Mehlem, Giselherstr” is located on the street of the hotels within 100 m. Visitors of the Hotel Dreesen might walk the “Rheinstrasse” to the bus stop “Römerplatz” (approx. 300 m) and use the bus lines 613 or 615 to get to the venue.

More information on hotels in Bonn can be found on the Official Tourism Web Site of the Government of Germany at the following link: <http://www.germany-tourism.de/> or at the Bonn Tourism Web Site <http://www.bonn-region.de/english.html>.

## **8. Payment of the Daily Subsistence Allowance (DSA)**

Sponsored participants will receive the relevant portion of their DSA on the first day of the meeting including one extra full day DSA, to cover other travel expenses such as visa expenses, travel cost and terminal expenses.

## **9. Official language in Germany**

The official language in Germany is German. English is spoken in hotels and restaurants.

## 10. Weather and time zone information



In February, temperatures in Bonn can range between a maximum of 7°C in the daytime and a minimum of -1°C at night.

The standard time zone is GMT/UTC +1 hour.

## 11. Electricity

The electrical currents in Germany are 230 Volts, 50 Hertz and plugs are as shown below.



## 12. Currency



The currency in Germany is the Euro (€). The current exchange rate as of 24 January 2012 is US \$1 = €0.77 and € 1 = US \$1.30. Currency exchange facilities are readily available in banks, hotels and within the meeting venue.

## 13. Disclaimer

The CBD Secretariat disclaims all responsibility for medical, accident and travel insurance, for compensation for death or disability compensation, for loss of or damage to personal property and for any other loss that may be incurred during travel time or the period of participation. In this context, it is strongly recommended to secure international medical insurance for the period of participation prior to departure.

## Annex A



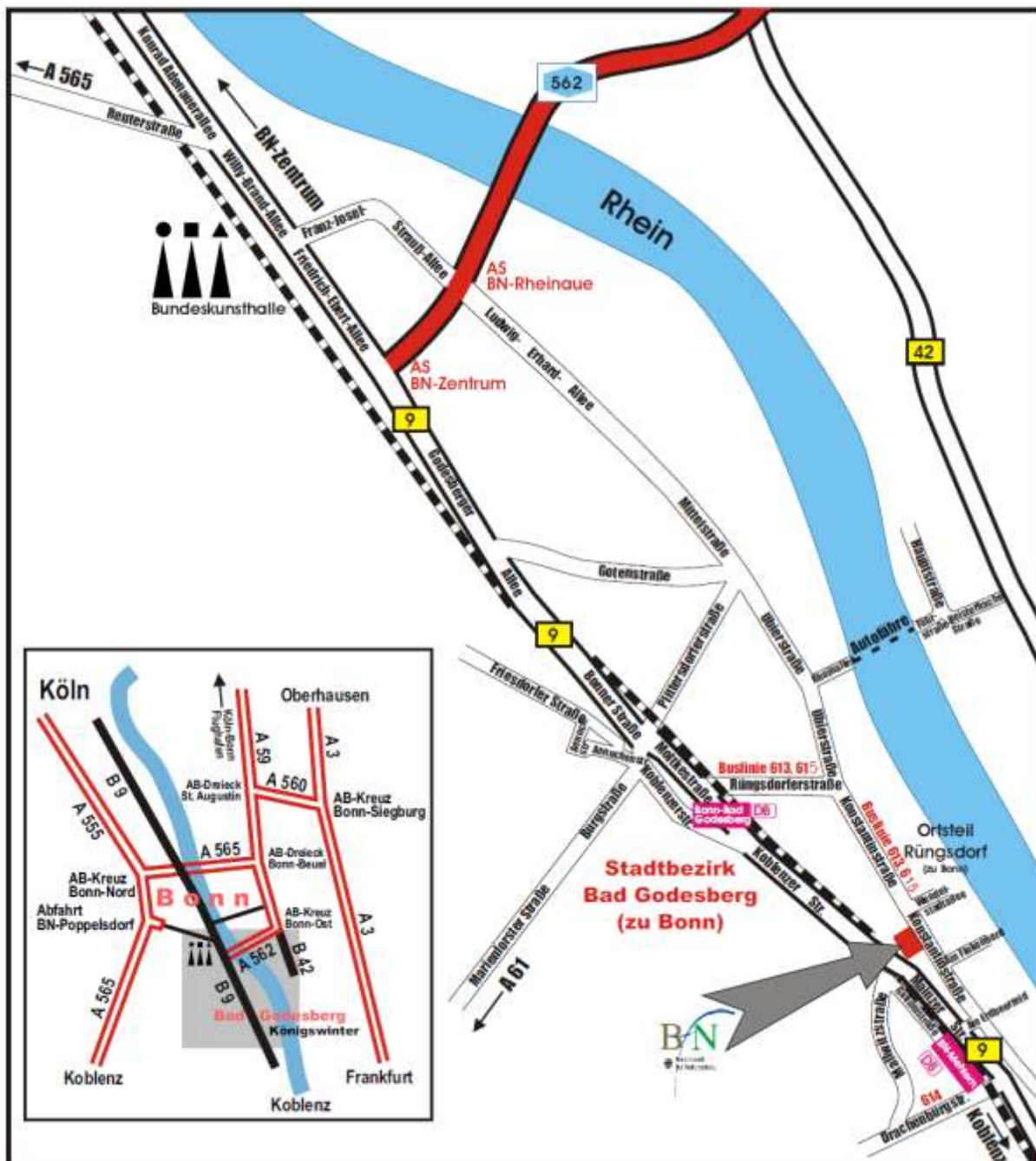
**BfN – Federal Agency for Nature Conservation**  
Konstantinstr.110  
53179 Bonn  
Germany

Telephone: +49 (0)228 8491-0  
Telefax: +49 (0)228 8491-9999  
Webpage: [www.bfn.de](http://www.bfn.de)



### How to reach the BfN:

See above and map below for location of BfN in relation to Bonn-City.



## Annex B

### COUNTRIES AND TERRITORIES WHOSE CITIZENS REQUIRE VISAS IN ORDER TO ENTER GERMANY AS VISITORS (AS LISTED ON THE WEBSITE OF GERMAN FEDERAL FOREIGN OFFICE)

Citizens of the following countries and territories require a visa to **visit** or **transit** Germany:

<b>A</b>	Eritrea	<b>M</b>	Serbia
Afghanistan	Ethiopia	Madagascar	Sierra Leone
Albania		Malawi	Solomon Islands
Algeria	<b>F</b>	Maldives	Somalia
Angola	Fiji	Mali	South Africa
Armenia		Marshall Islands	Sri Lanka
Azerbaijan	<b>G</b>	Mauritania	Sudan
	Gabon	Micronesia, Fed. States	Suriname
<b>B</b>	Gambia	of	Swaziland
Bahrain	Georgia	Moldova	Syrian Arab Republic
Bangladesh	Ghana	Mongolia	
Belarus	Grenada	Montenegro	<b>T</b>
Belize	Guinea	Morocco	Tajikistan
Benin	Guinea-Bissau	Mozambique	Tanzania, United
Bhutan	Guyana	Myanmar	Republic of
Bolivia			Thailand
Bosnia and Herzegovina	<b>H</b>	<b>N</b>	The former Yugoslav
Botswana	Haiti	Namibia	Republic of Macedonia
Burkina Faso		Nauru	Togo
Burundi	<b>I</b>	Nepal	<b>T (cont'd)</b>
	India	Niger	Tonga
<b>C</b>	Indonesia	Nigeria	Trinidad and Tobago
Cambodia	Iran, Islamic Republic of		Tunisia
Cameroon	Iraq	<b>O</b>	Turkey
Cape Verde		Oman	Turkmenistan
Cayman Islands	<b>J</b>		Tuvalu
Central African Republic	Jamaica	<b>P</b>	
Chad	Jordan	Pakistan	<b>U</b>
China		Papua New Guinea	Uganda
Colombia	<b>K</b>	Peru	Ukraine
Comoros	Kazakhstan	Philippines	United Arab Emirates
Congo, Democratic	Kenya		Uruguay
Republic of the	Kiribati	<b>Q</b>	Uzbekistan
Congo, Republic of the	Korea, Democratic	Qatar	
Côte d'Ivoire	People's Republic of		<b>V</b>
Cuba	Kuwait	<b>R</b>	Vanuatu
	Kyrgyzstan	Russian Federation	Viet Nam
<b>D</b>		Rwanda	
Djibouti	<b>L</b>		<b>Y</b>
Dominica	Lao, People's	<b>S</b>	Yemen
Dominican Republic	Democratic Republic of	Saint Lucia	
	Lebanon	Saint Vincent and the	<b>Z</b>
<b>E</b>	Lesotho	Grenadines	Zambia
East Timor	Liberia	Samoa	Zimbabwe
Ecuador	Libyan Arab Jamahiriya	Sao Tomé e Príncipe	
Egypt		Saudi Arabia	
Equatorial Guinea		Senegal	