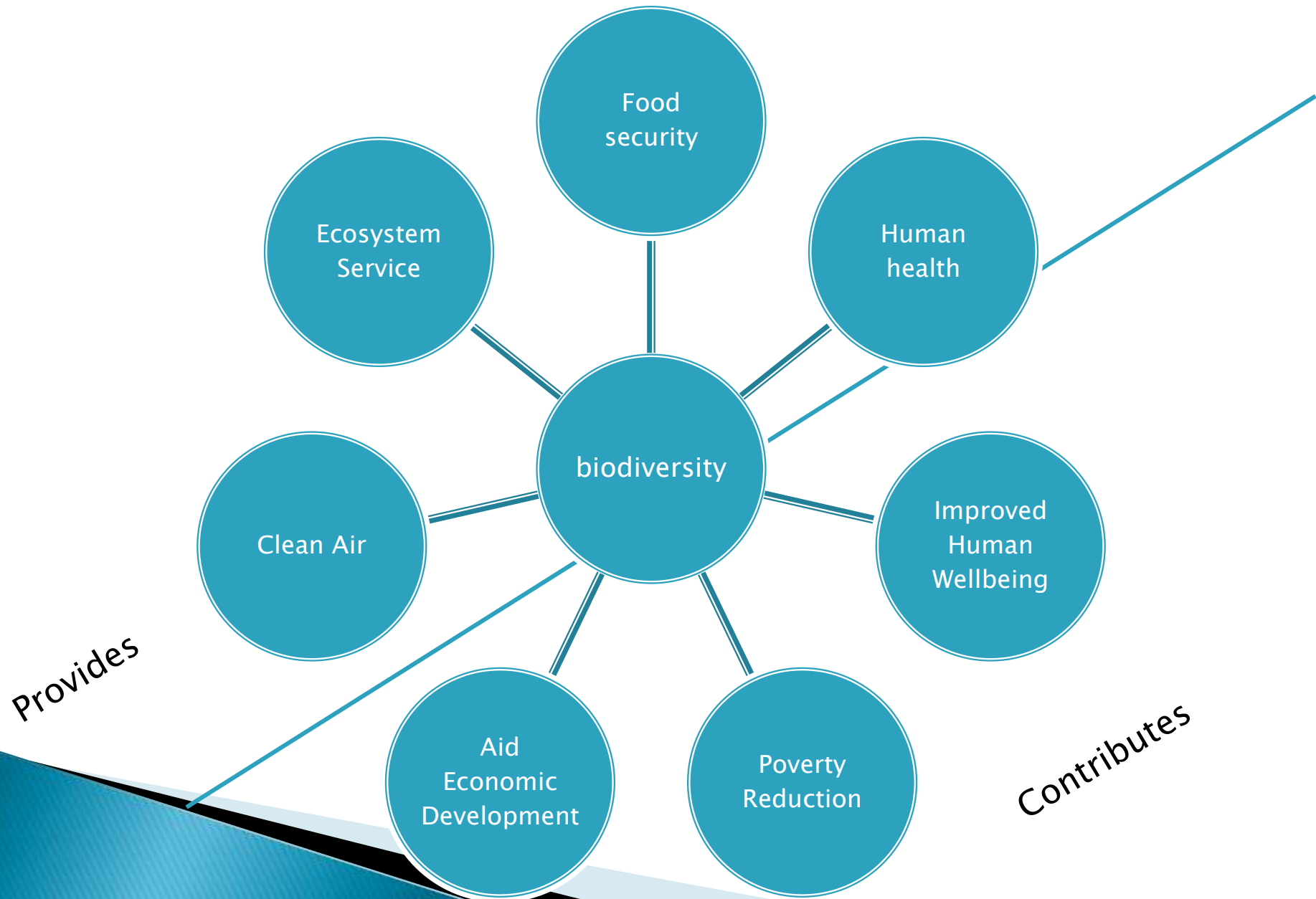


Regional Overview Policy, Legal and Institutional Tools to address Selected Aichi Targets

Asha Singh, PhD

Biodiversity– What it means to us?



Issues

- ▶ Pollution
- ▶ Habitat destruction
- ▶ Over-exploitation
- ▶ Invasive
- ▶ Conflicting land use
- ▶ Effects of climate change
- ▶ GMO?

Consequences

- ▶ Habitat loss
- ▶ Species loss– key stone and commercial species
- ▶ Tropic cascading
- ▶ Change in the food chain
- ▶ Species migration

Translating these goals

Strategic Goal	Target	
Reduce the direct pressures on biodiversity and promote sustainable use	5	
Improve the status of biodiversity by safeguarding ecosystems, species and genetic diversity	11	
Enhance the benefits to all from biodiversity and ecosystem services	15	

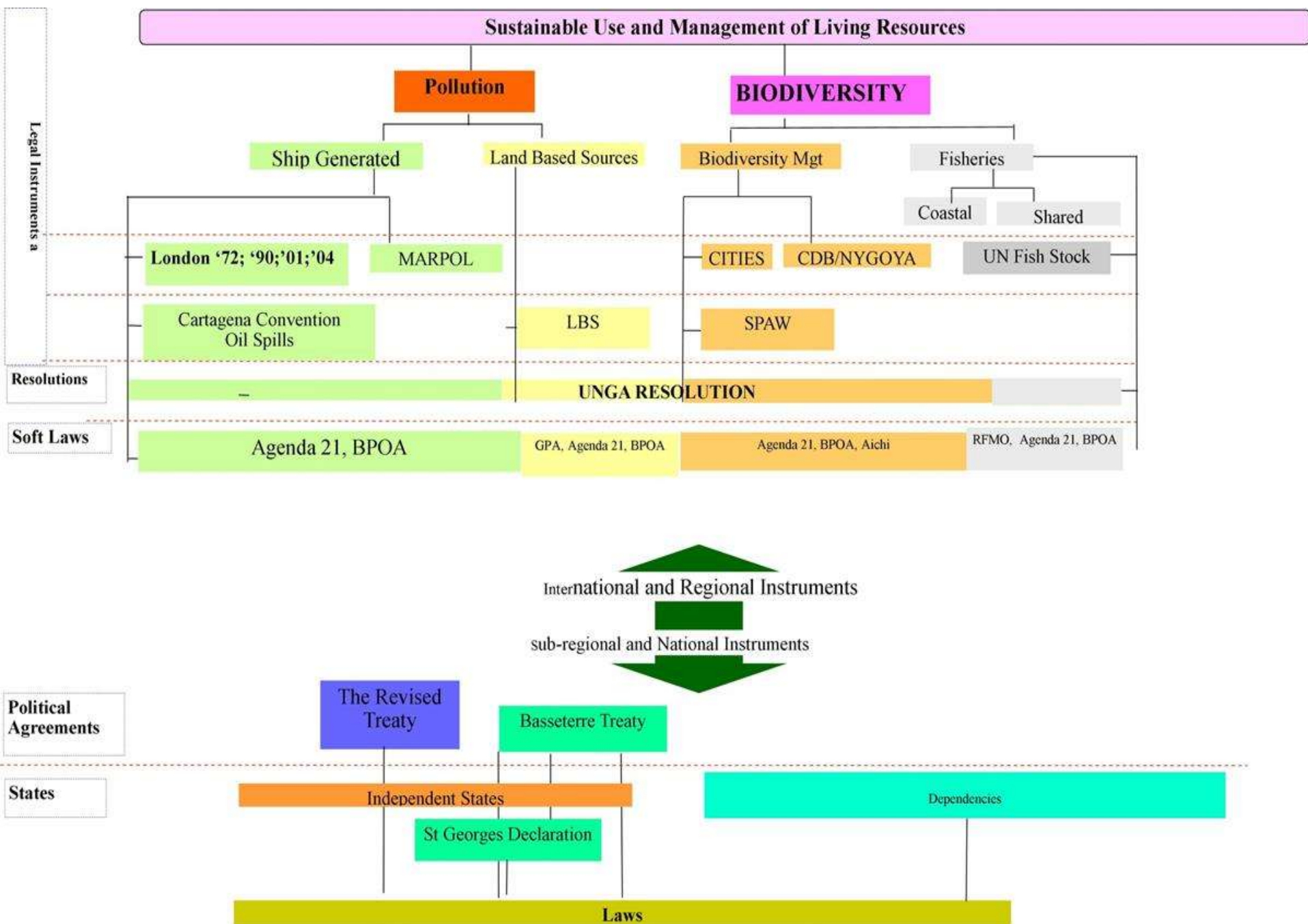
The Region's Response

Legal

Policy

Institutional





The Region's Response– Policy

International

Regional


Sub-regional

National



The Region's Response– Policy

. The Common Fisheries policy

- * Eastern Caribbean Regional Ocean Policy
 - * Fisheries Policy and Implementation Plan
 - * Regional Plan of Action for Agriculture
- 

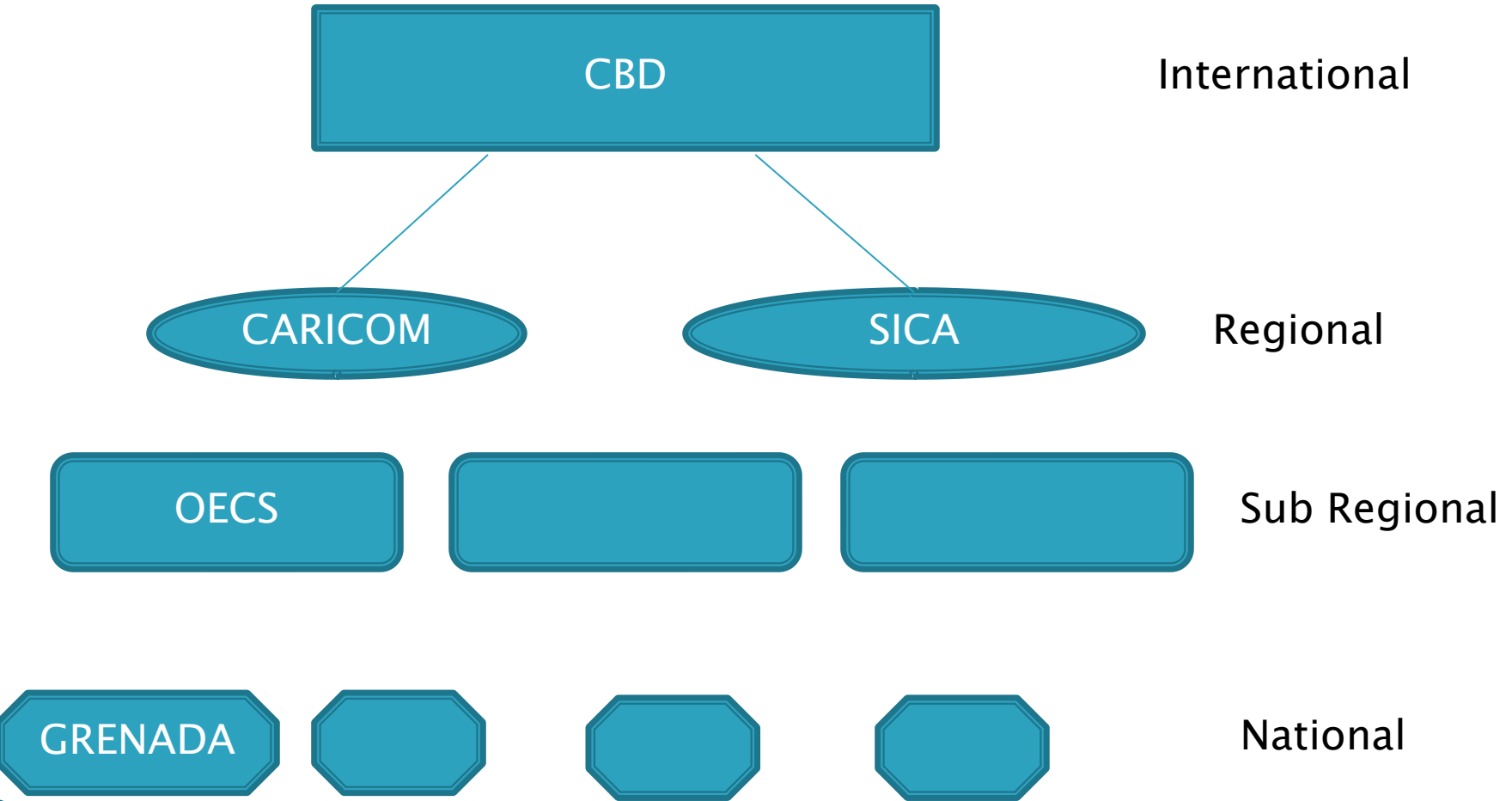
National Policies



National biodiversity Policy and Action

Forestry Policy , Fisheries Policy

The Region's Response– Inst



Translating these goals

Strategic Goal	Target	Indicator s e.g
Reducing Pressure	5	Pollution
Safeguarding ecosystems	11	Protected areas
Ecosystem resilience	15	Conservation and restoration

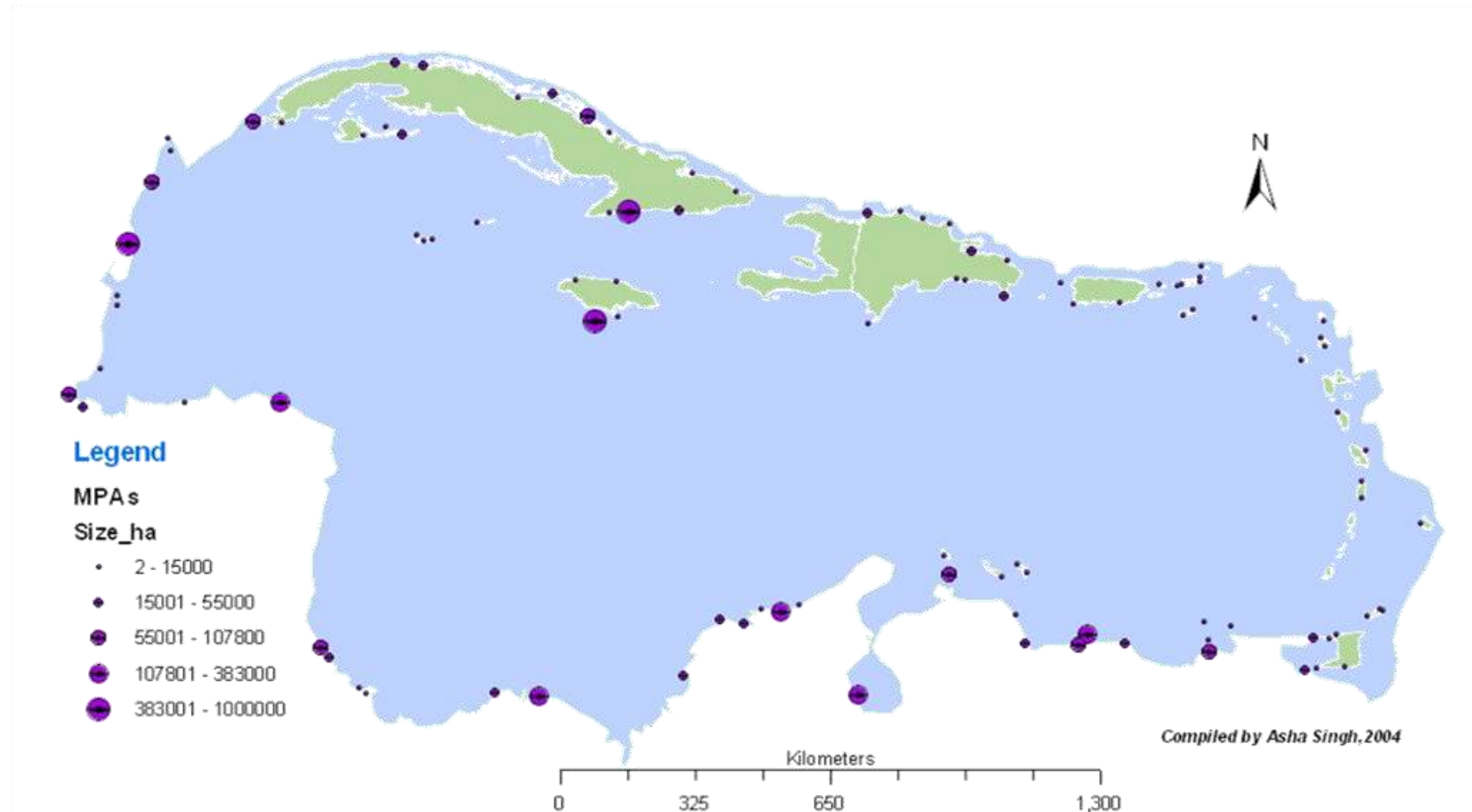
Translating the Goals – 5–Pollution

RATIFICATION OF LBS PROTOCOL



* *Caribbean Netherlands*: Special Public Bodies of the Netherlands. Alternatively known as Bonaire, St Eustatius and Saba, BES Islands.

Translating the Goals – 11-PA




Translating the Goals– 15– conservation

▶ Caribbean challenge

- conserving at least 20% of their nearshore marine and coastal environments in MPAs by 2020;

Considerations

- ▶ Synergies
 - ▶ Cross Cutting
 - ▶ Resources
 - ▶ Implementation
- 

▶ Conclusion

- ▶ Biodiversity is important
 - ▶ Pressures
 - ▶ Impact
 - ▶ Governance
 - ▶ Challenges
 - ▶ Strides
- 