

Investing Biodiversity and Supporting Integrated Approach

NIU Zhiming
Asian Development Bank
Jeju, 15 July 2014

Outline

- ADB financing instruments
- Regional biodiversity initiatives
- Cases in the PRC
- Lessons

ADB's Strategy 2020

- Inclusive growth
- Environmentally sustainable growth
- Regional integration

ADB's Environment Operations



Promoting a
shift to
sustainable
infrastructure



Investing in
natural capital



Strengthening
governance and
management
capacities

Climate change (mitigation and adaptation)

Investing in Natural Capital

ADB's Approach



1. Investments

- Protect, & maintain the productive potential and performance of land and water resources.
- Support food, water and energy security, climate change mitigation and adaptation.



2. Technical assistance

- Environmental governance strengthening
- Regional cooperation for large-scale ecosystems
- Valuation of natural capital

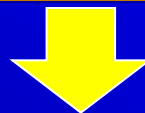


3. Strengthening biodiversity safeguards

4. Partnerships and financial resource

Finance ++

ADB's Sector Policies and Operational Plans



Operations Departments



TAs

Grants

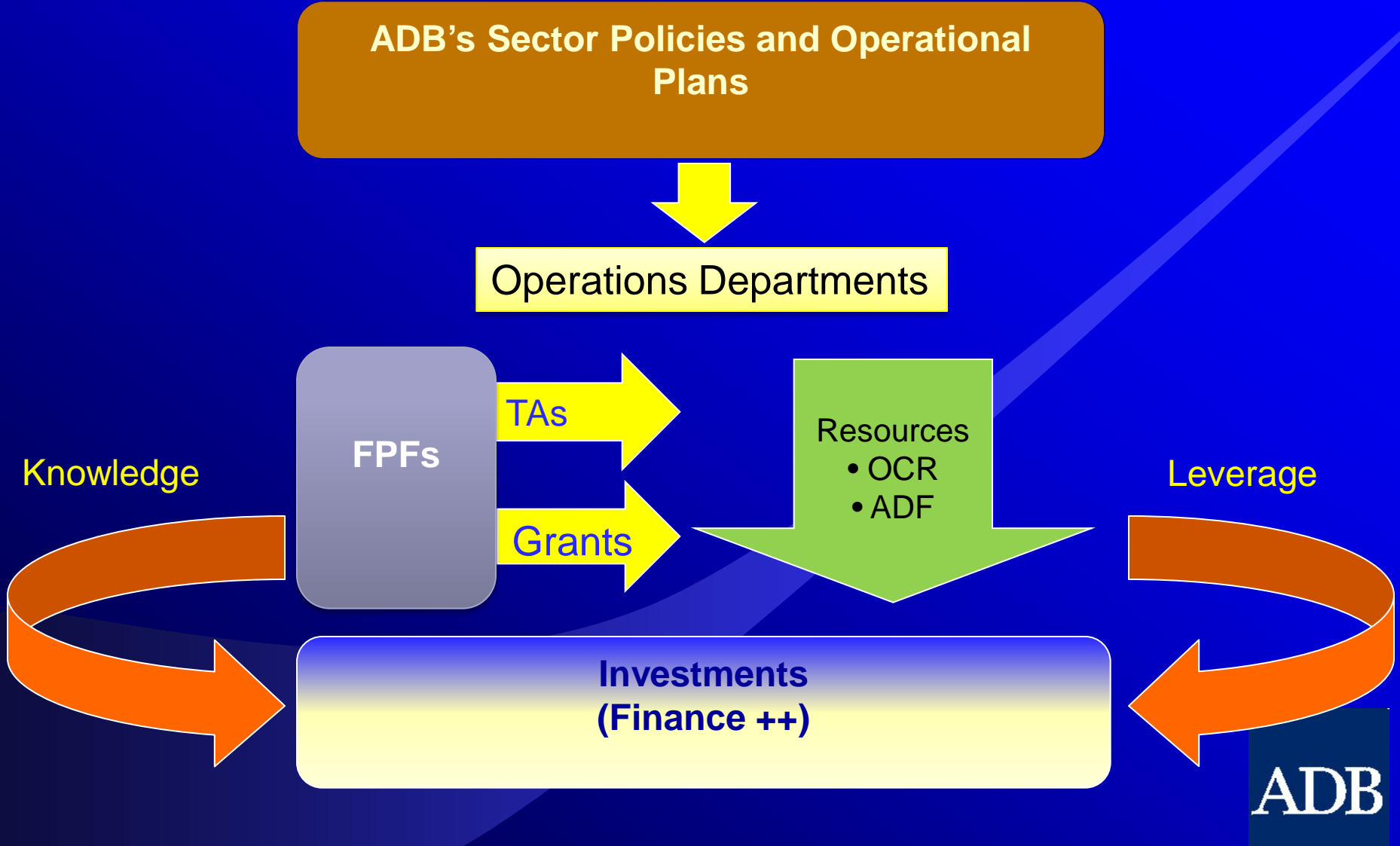
Resources
• OCR
• ADF

Knowledge

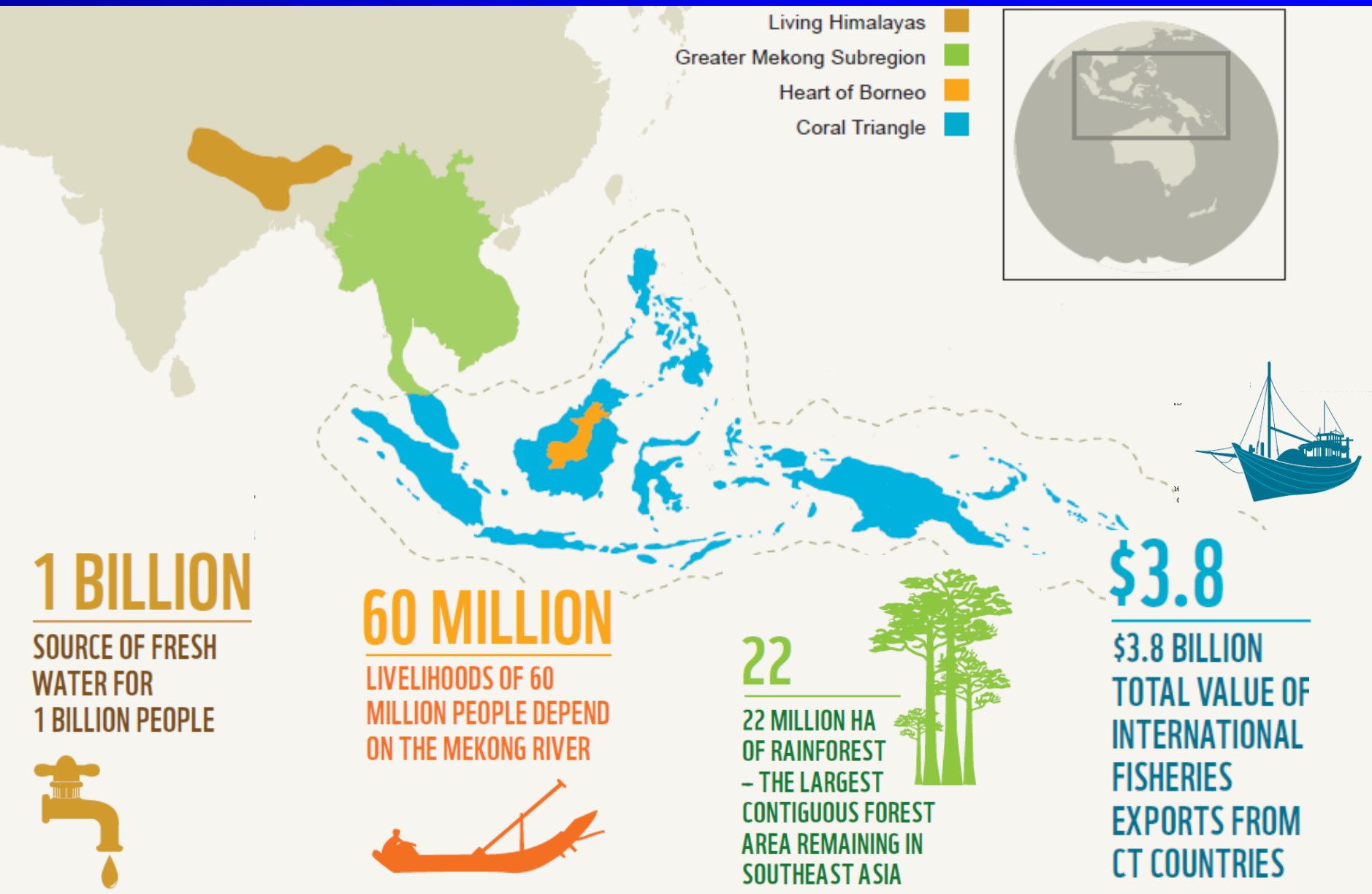
Leverage

Investments
(Finance ++)

ADB



Critical Large-scale Eco-regions



Greater Mekong Subregion

- Rich biodiversity –over 1,200 new species discovered during 1997 and 2008
- Transboundary ecosystems – Mekong River; Cardamom Mountains; elephant corridors, tiger landscapes, saola ranges, gibbon habitats
- PAs – 13.1% of land area (2012, excluding PRC)

Economic Development & Ecosystem Interface

Annual GDP 9.5%

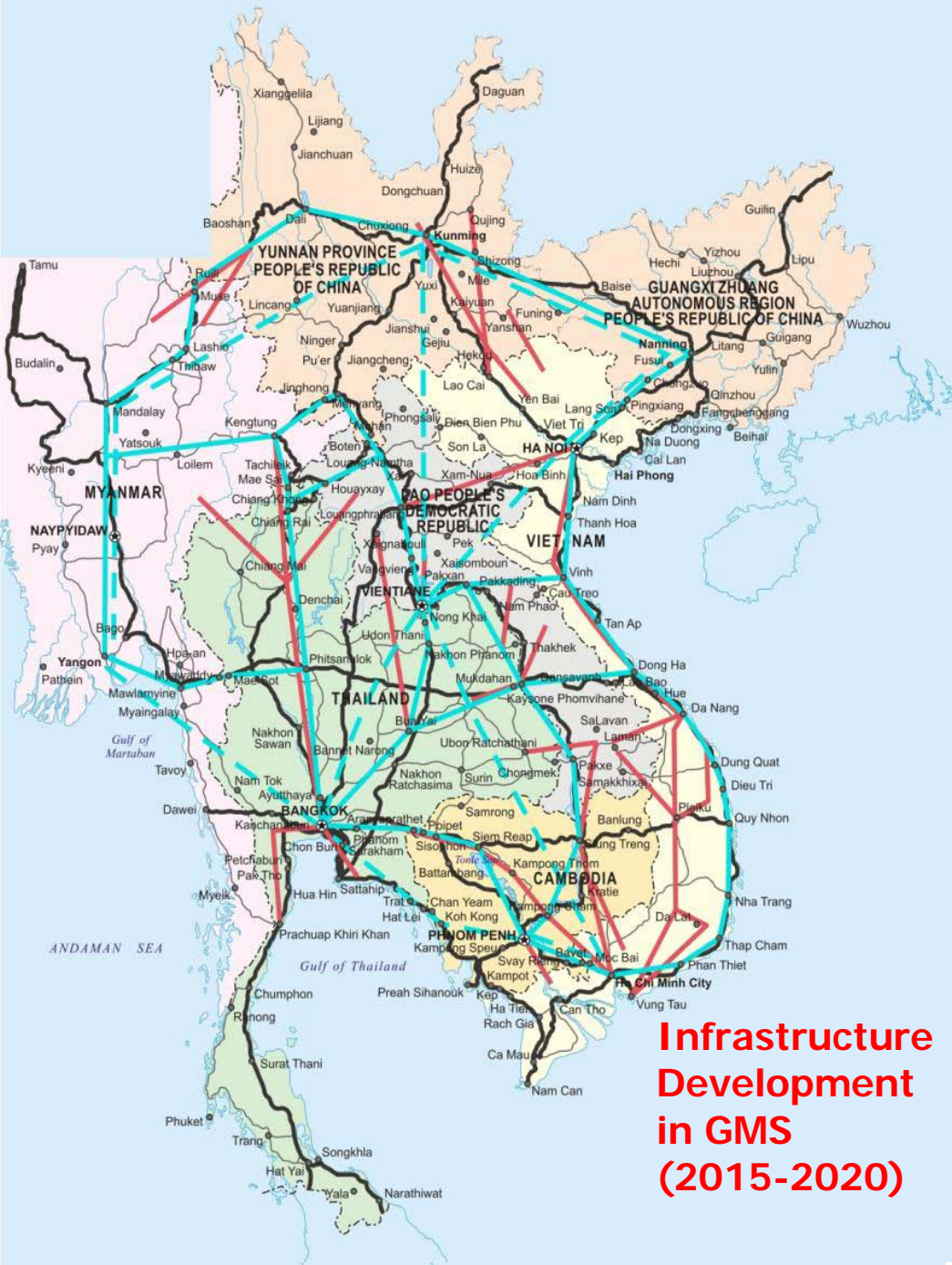
Economic
development
corridors

FDI \$5 billion

Biodiversity
conservation
landscapes



Supported by the GMS Economic Cooperation Program



**Infrastructure
Development
in GMS
(2015-2020)**

-  Roads
-  Telecommunications
-  Power Transmission Line

Biodiversity Corridors Initiative_GMS CEP

Impact

Improved biodiversity conservation and climate resilience across the GMS

Outcome

Environment friendly and climate resilient GMS Economic Cooperation Program

Outputs / Sub-components

Environmental planning systems, methods and safeguards improved

- environmental planning
- environmental safeguards
- environmental monitoring

Improved management of conservation landscapes for sustainable livelihoods

- Trans-boundary biodiversity landscape management
- value chains support sustainable livelihoods

Climate resilience enhanced and low carbon development promoted

- Planning for climate resilience
- climate monitoring
- testing adaptation and mitigation options

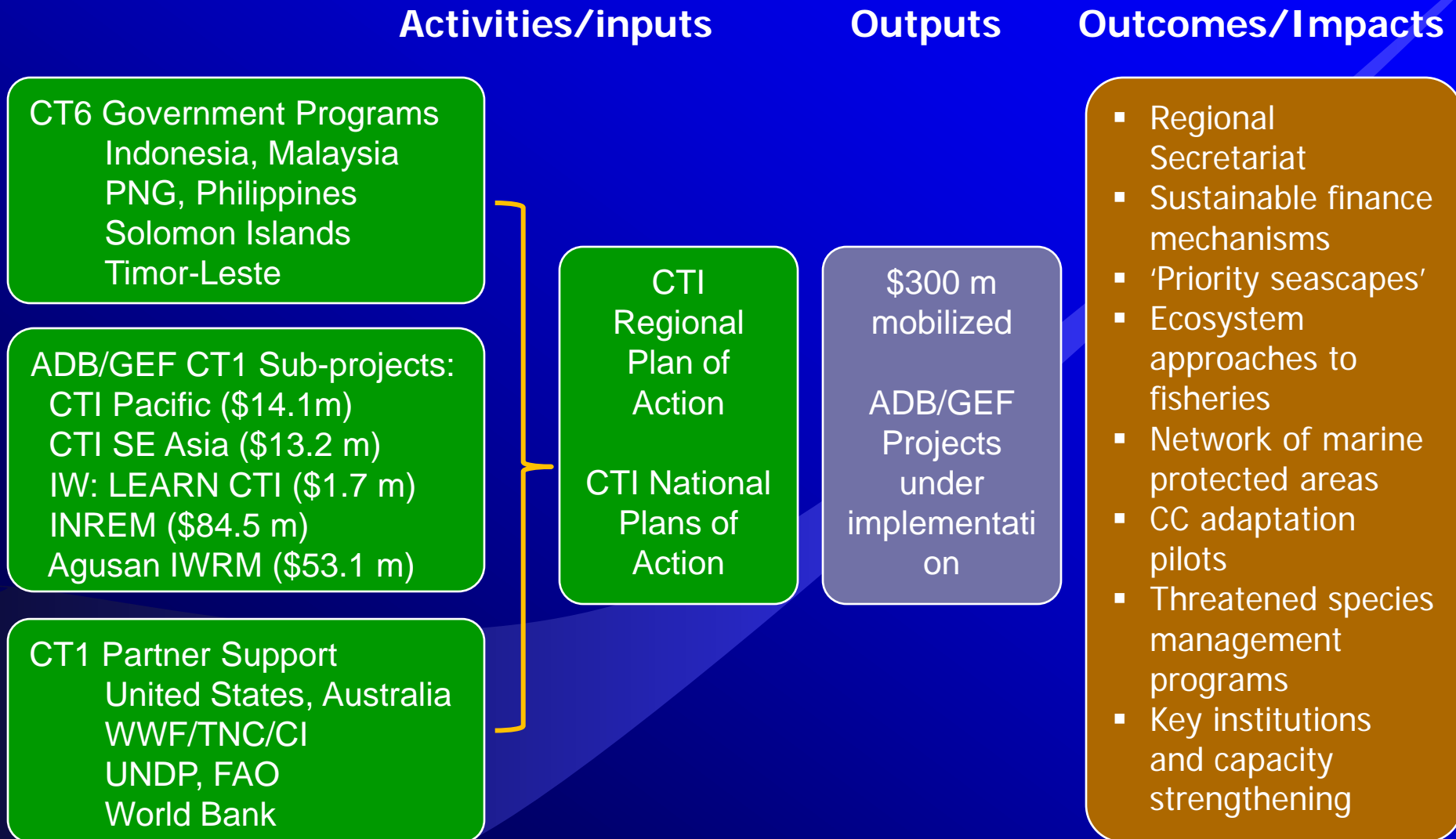
Strengthened institutions and sustainable financing for environmental management

- strengthening regional cooperation
- strengthening partnerships
- sustainable financing

Pilot Achievements

Total number of villages/communes covered	164
Total number of beneficiary households covered (hh)	28,367
Total area under BCI corridors (ha)	1,294,936
Total area under strict protection in BCI landscapes (ha)	2,000,000
Average values of forest ecosystem services (US\$/ha/yr)	5,136
Total area reforested/enriched (ha)	3,722
Total number of local committees/development funds established	181
Total amount disbursed to local committees/development funds (\$)	337,399
Improved land tenure rights (ha)	32,265
Number of participants in capacity building events	7,057

The Coral Triangle Initiative



Sanjiang Plain Wetlands

Nature reserve management & conservation

- Water allocation secured for >10,000 km² of wetlands.
- Rehabilitation /protection of 4700 km² of forests

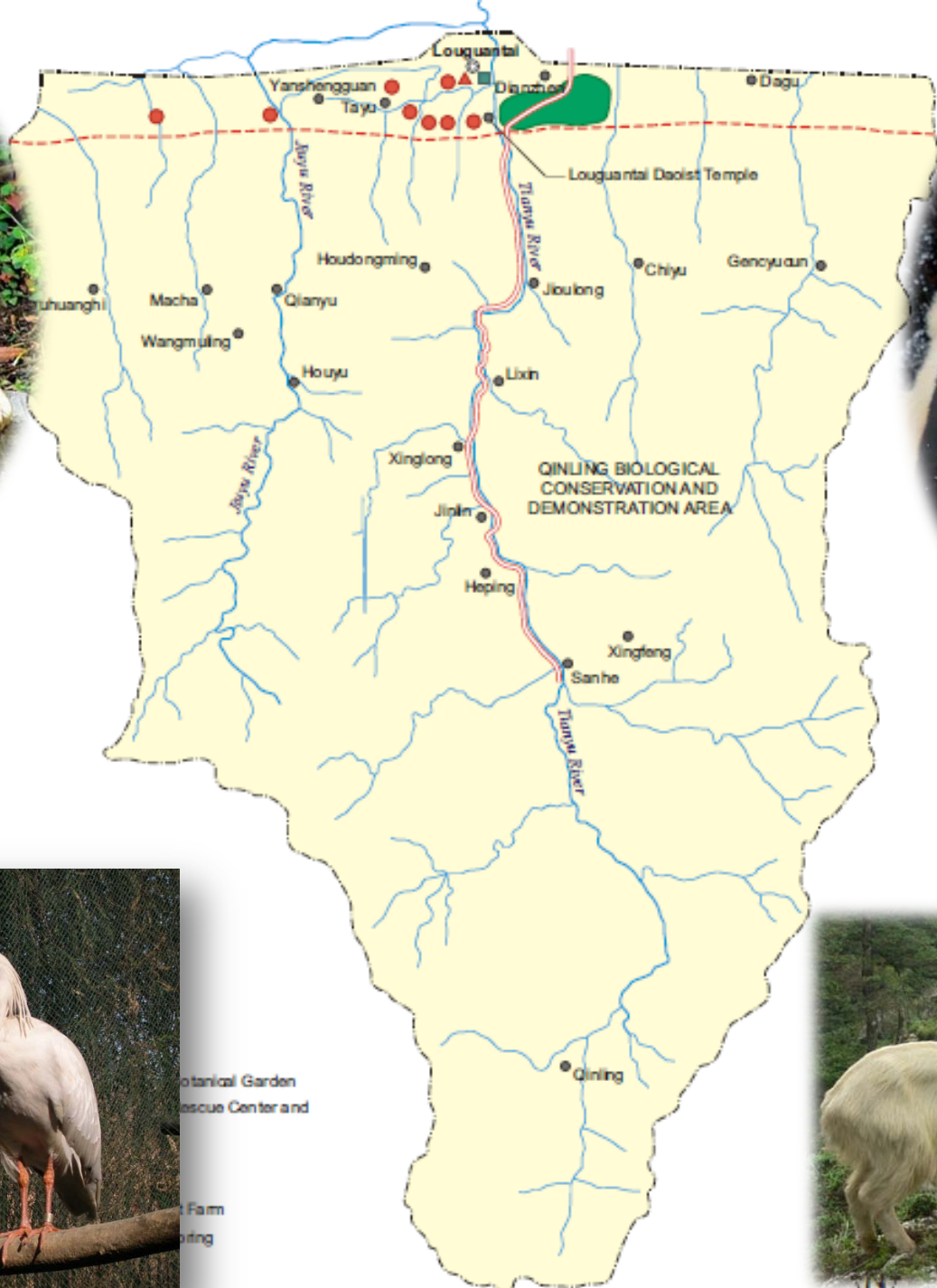
- Management plans for 6 NRs
- Wetland restoration models piloted
- Recovery plans for 18 water birds

- Sustainable farming models
- Ecotourism pilots
- Conservation education programs.

Integrated watershed management

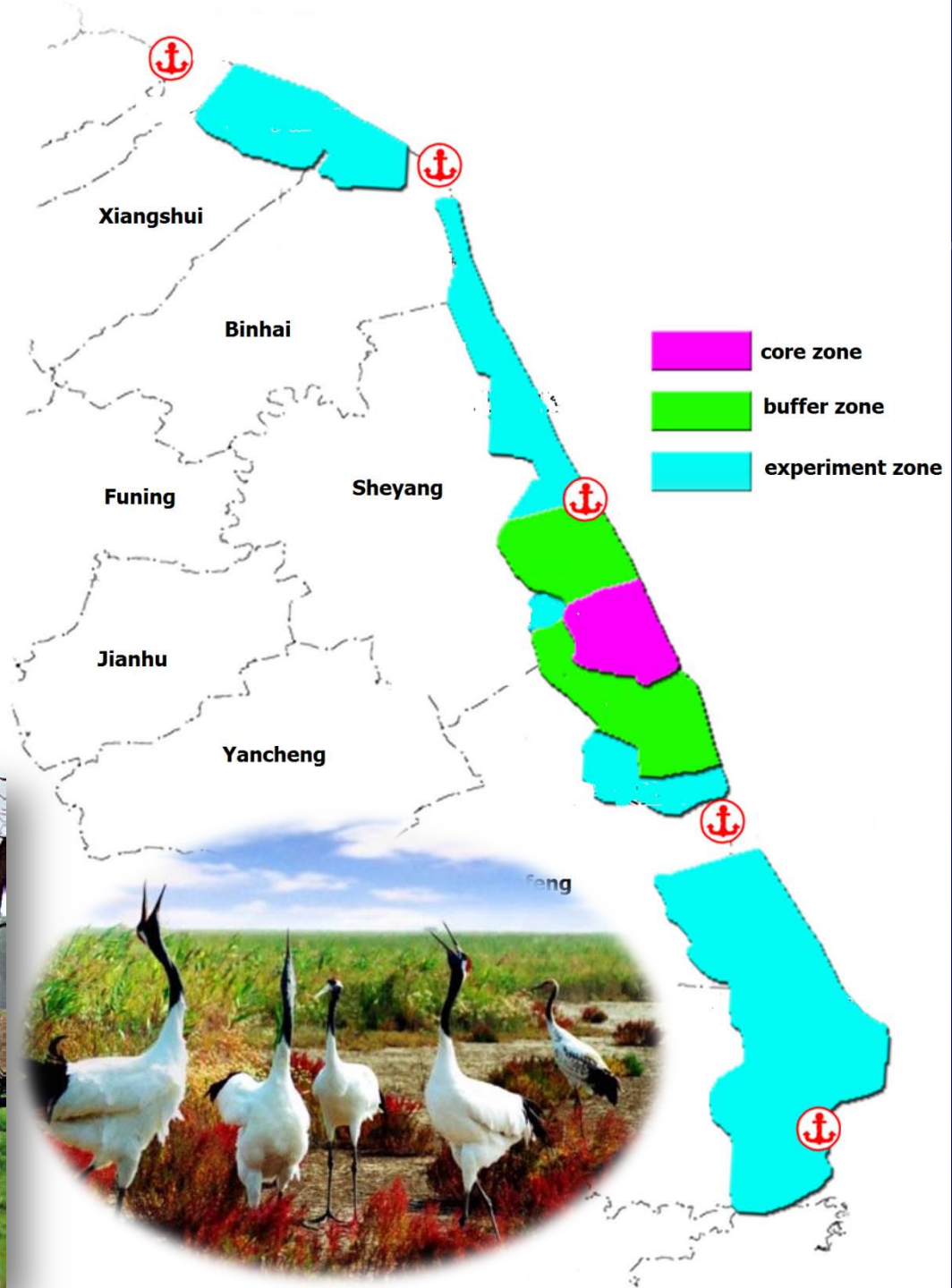
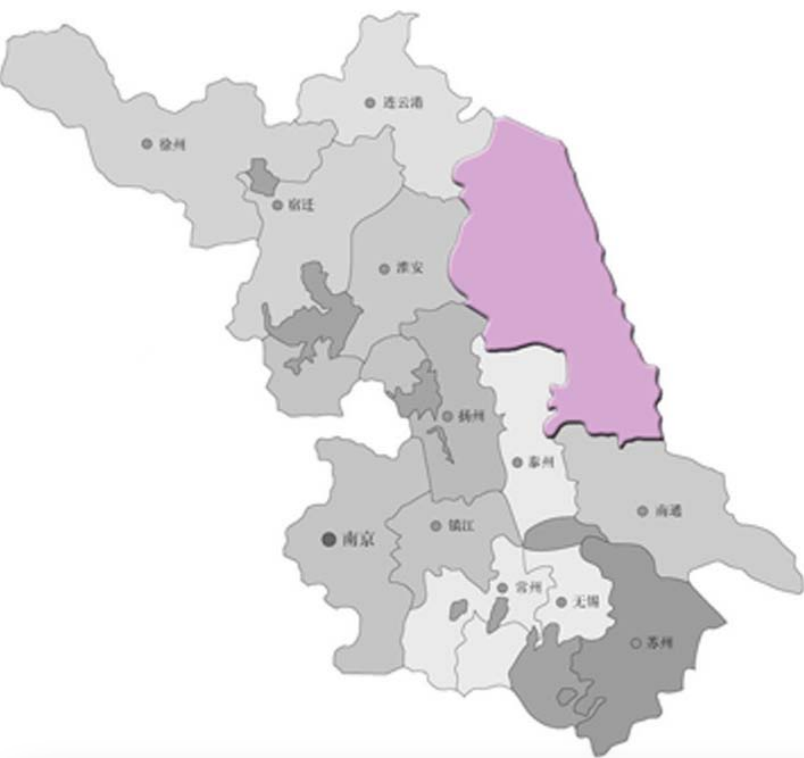
Sustainable livelihoods

DB

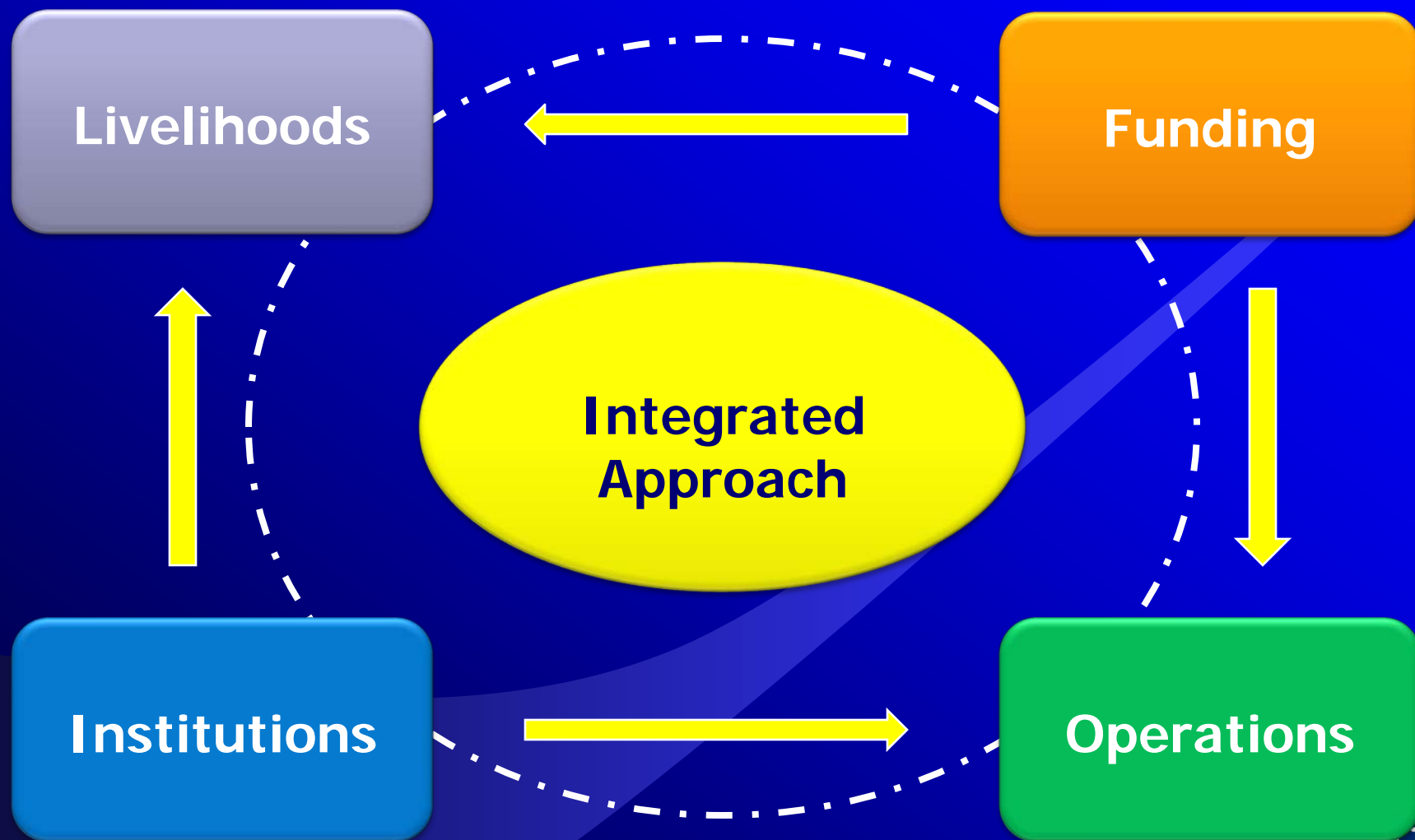


Botanical Garden
Rescue Center and
Farm
Spring





Lessons



A photograph of a flock of white birds, possibly egrets or herons, flying over a field of tall, dry, golden-brown grass. The birds are captured in various stages of flight, with their wings spread. The sky is a uniform, overcast grey. The text "THANK YOU" is overlaid in the center of the image in a bold, yellow, sans-serif font.

THANK YOU