



ກອງທຶນປົກປັກຮັກສາສິ່ງແວດລ້ອມ
Environment Protection Fund

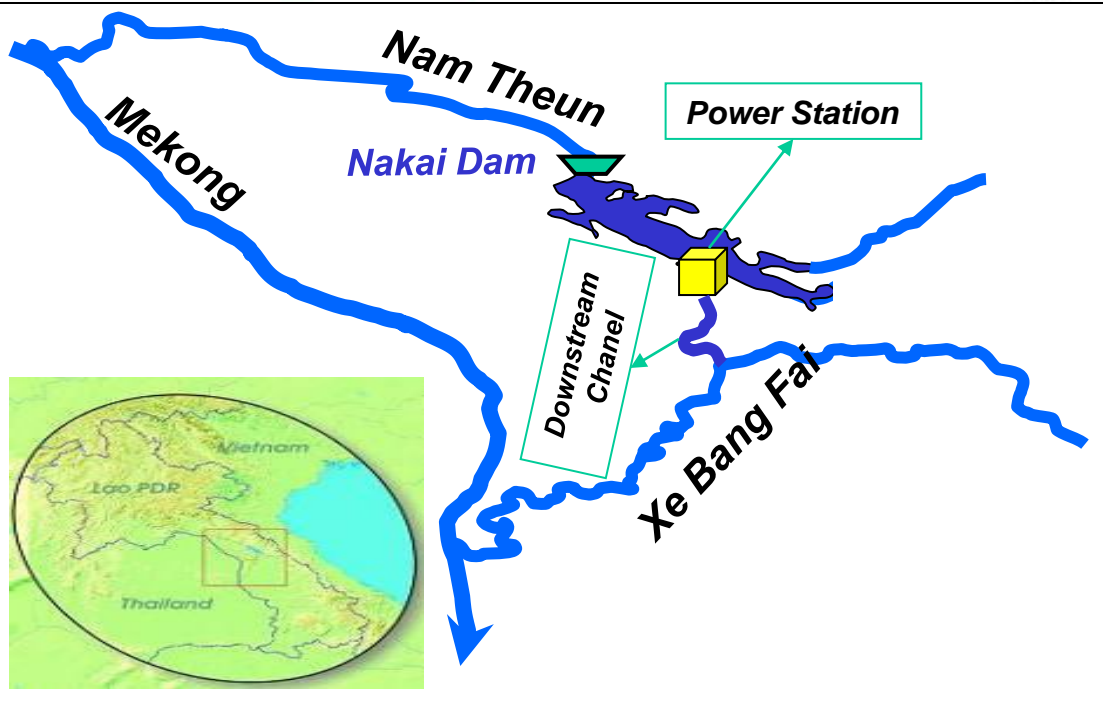
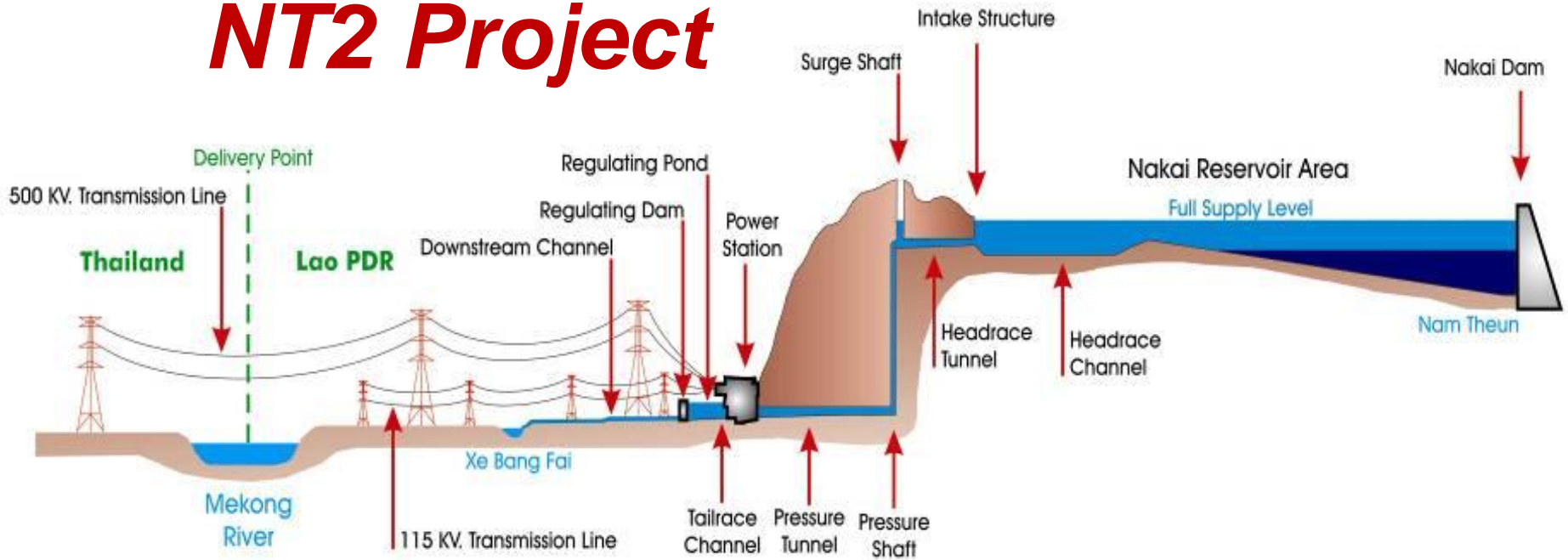
***Finance Mechanism for Biodiversity:
Examining Opportunities and
Challenges
NT2 Watershed Management***



Soukata Vichit

EPF ED

NT2 Project



- ***NTPC financed project***
- ***1,080 MW***
- ***US\$ 1,2 billion investment***
- ***95% of electricity for export***
- ***US\$ 2bl over 25 years***

ຈຸດຕັ້ງກ້ອງສຳຫຼວດສັດປ່າເຂດຫ້າງແປ-ນ້ຳສານ ປີ 2006-2007
 Thongpea Namsan Wildlife Camera trap 2006-2007



NT2 Watershed:

4,000 sq km catchment area for NT river (NNT NPA + 2 corridors between other 2 NPAs)

ຈຸດຕັ້ງກ້ອງສຳຫຼວດສັດປ່າເຂດນ້ຳມອນປີ 2009-2010
 Nam Mone Wildlife Camera trap 2009-2010



ຈຸດຕັ້ງກ້ອງສຳຫຼວດສັດປ່າເຂດນ້ຳແຈ ປີ 2008
 Nam Chae Wildlife Camera trap 2008



ຈຸດຕັ້ງກ້ອງສຳຫຼວດສັດປ່າເຂດນ້ຳເທີນ ປີ 2009
 Nam Theun Wildlife Camera trap 2009



ຈຸດຕັ້ງກ້ອງສຳຫຼວດສັດປ່າເຂດຫ້າງແສດ ປີ 2008-2009
 Thongsad Wildlife Camera trap 2008-2009



ຈຸດຕັ້ງກ້ອງສຳຫຼວດສັດປ່າເຂດນ້ຳອອນ ປີ 2007
 Nam On Wildlife Camera trap 2007



Saola (*Pseudoryx ghetinensis*)



Purpose of the NT2 Watershed

1. An offset for NT2 hydro electric project

- Lost of area
- Biodiversity value

2. Long term protection NT2 catchment area

- Ensure hydrology flow into the NT2 reservoir
- **Minor loss of reservoir operation**

3. Social development

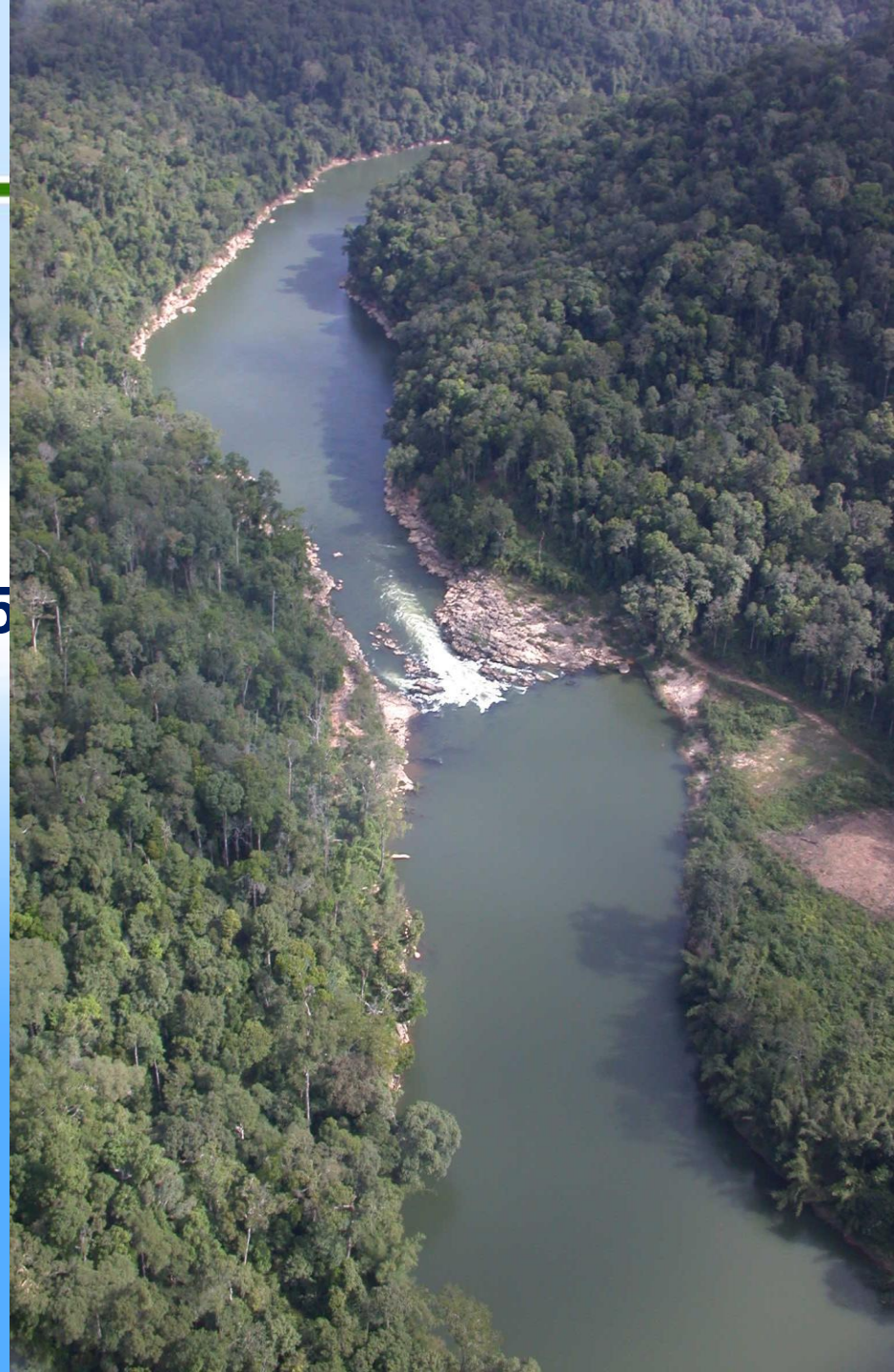
- Livelihood/well being of enclave villages
- Local community participation



Funding and implementation

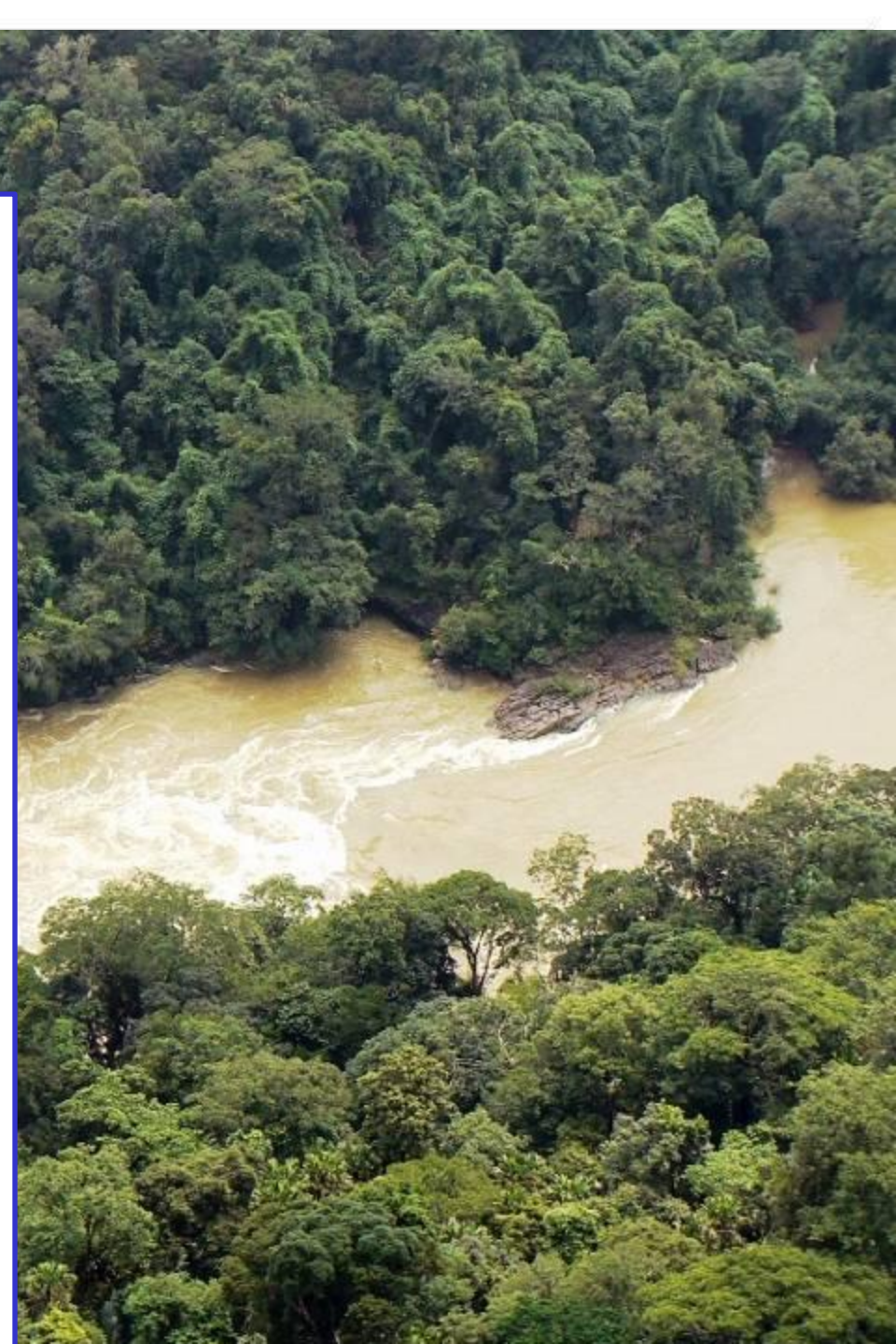


- **US\$ 31,5 million provided by NTPC**
 - **US\$ 6,5 million for the construction period and**
 - **US\$ 1 million/year over 25 years of operation**
- **Implementing agency: Watershed Management and protection Authority (WMPA),**
 - **BOD; and**
 - **Secretariat**



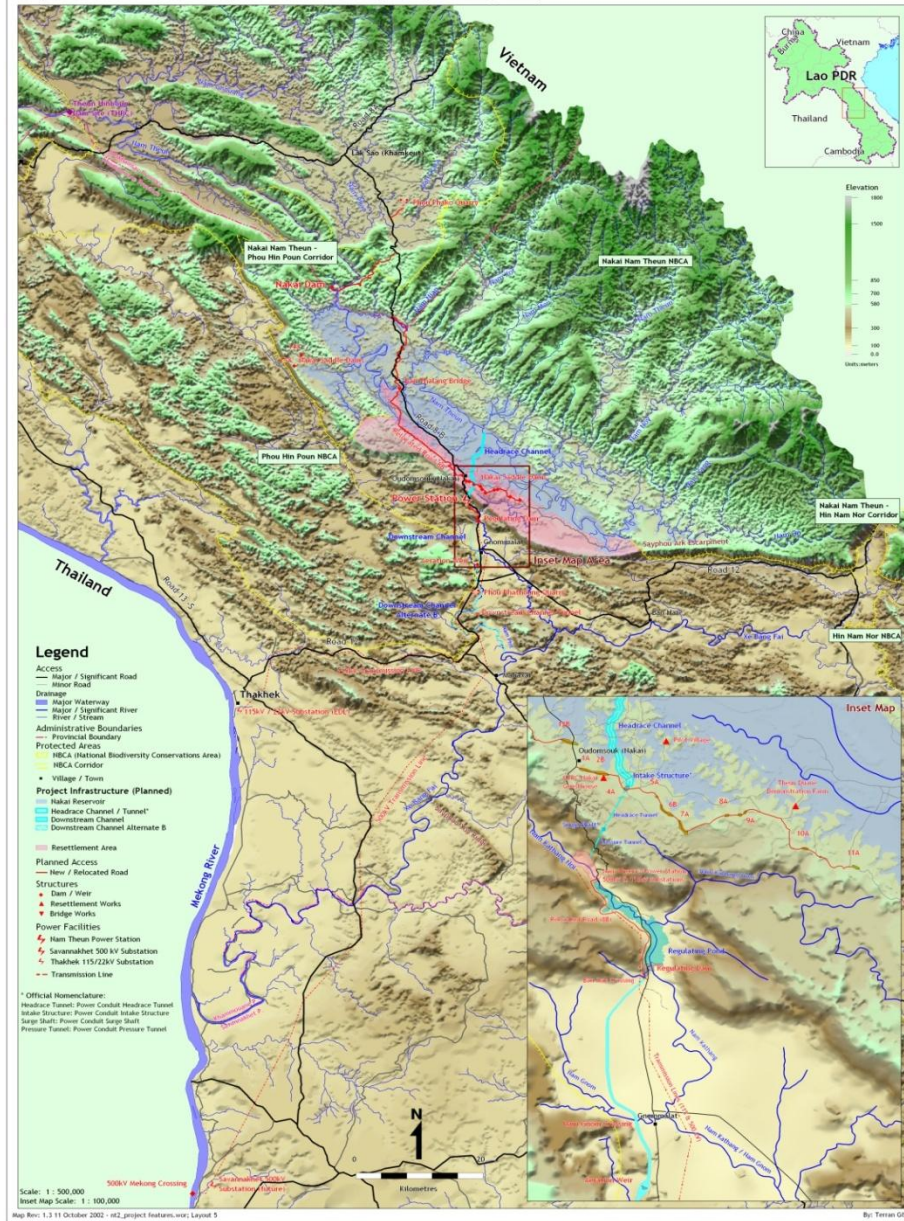
EPF Involvement

- **Community Conservation Network**
 - **Involves 6 villages of Nakai Nam Theun NPA in the Conservation and livelihood development**



Potential to mobilize & scale up finance

- NT2 Bond;
- NT2 revenue;
- NT2 model is used in other areas:
 - Anamite Range in proximity of Sepone Gold mining
 - Watershed of Theun Hinboun Plant
- Upgrading NRE Agency
 - Ongoing reallocation of fund for NRE sector (benefit sharing, tax, ..)





Address

- **EPF Executive Office**

POBox: 7647

**2nd Floor, # 100, Sidamduan Road,
Vientiane**

Tel: (856 21) 252739

Fax: (856 21) 252741

<http://www.laoepf.org.la>

