



**INTERNATIONAL YEAR
OF FORESTS • 2011**



[SAINT LUCIA FORESTRY DEPARTMENT: Ministry of Agriculture forestry and Fisheries]

*Combined safeguards and sub-regional capacity
building workshop on REDD-plus, Quito, Ecuador,
5-8 July 2011*

[Adams Toussaint
Assistant Chief Forestry officer
Forestry Department
Saint Lucia]



**INTERNATIONAL YEAR
OF FORESTS • 2011**



National experience with REDD-plus

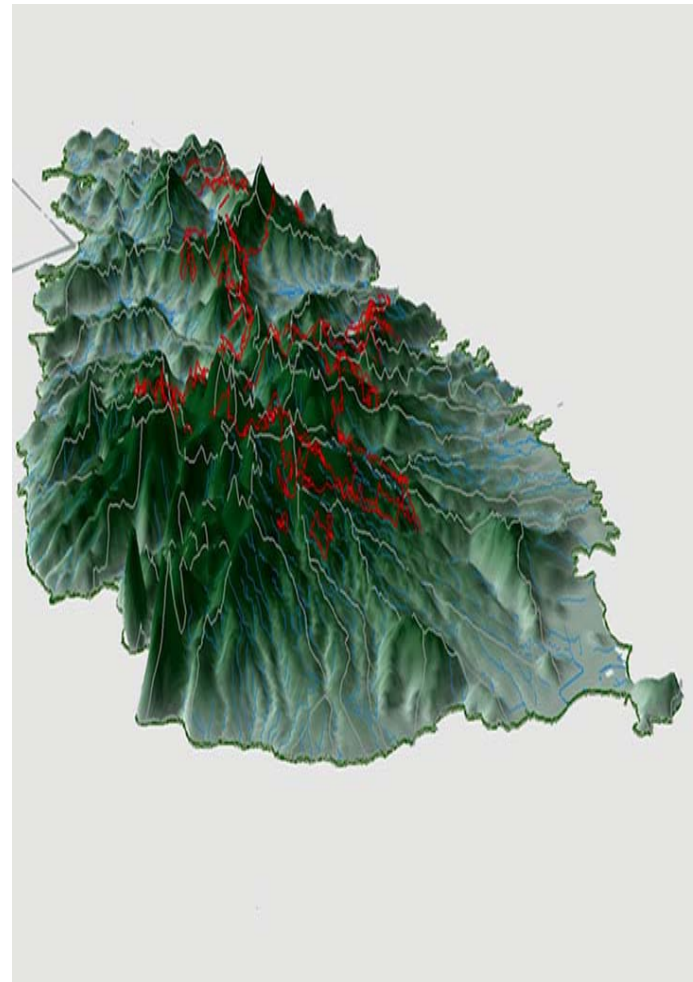
There are no national structure for REDD-plus planning in Saint Lucia.

However, Guyana REDD-Plus Investment Plan and discussions on a Green Economy framework at the CARICUM Preparatory Meeting on Input to Rio+20 has generated new interest in REDD-Plus.



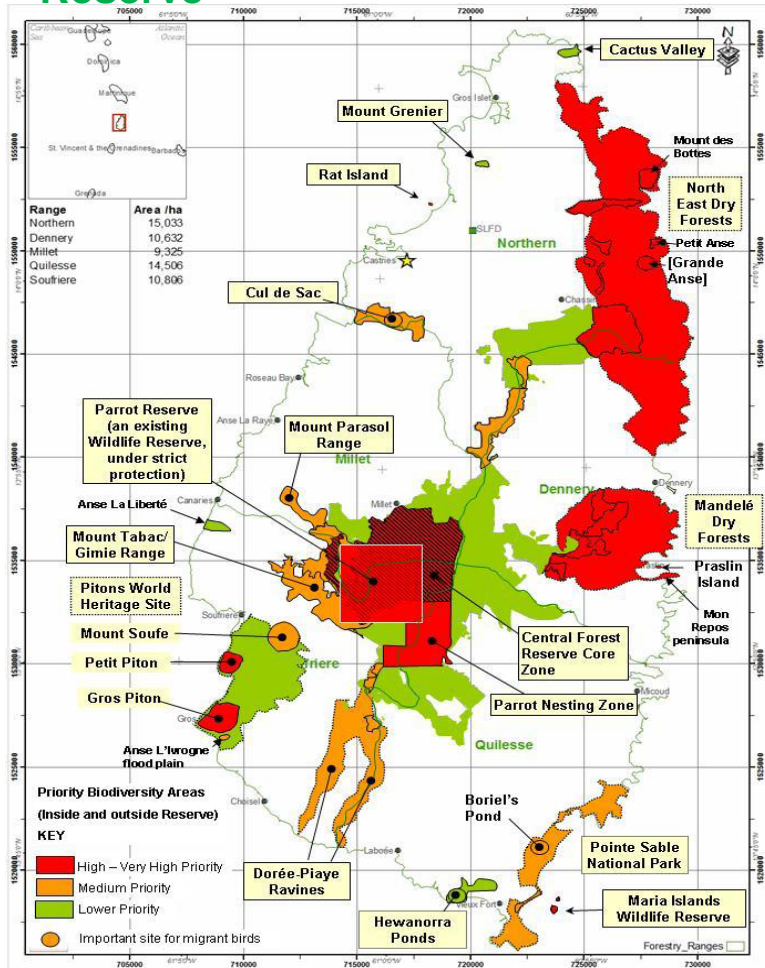
National Forest Demarcation & Bio-Physical Resource Inventory Project (2009)

- Demarcate and realign forest boundaries*
- Assess the status of the forest ecosystem*
- Recommend silvicultural and utilization prescriptions*
- Created an updated forest monitoring system*
- Provide spatial and statistical forest management data*
- Conducted a forest assessment training programme*

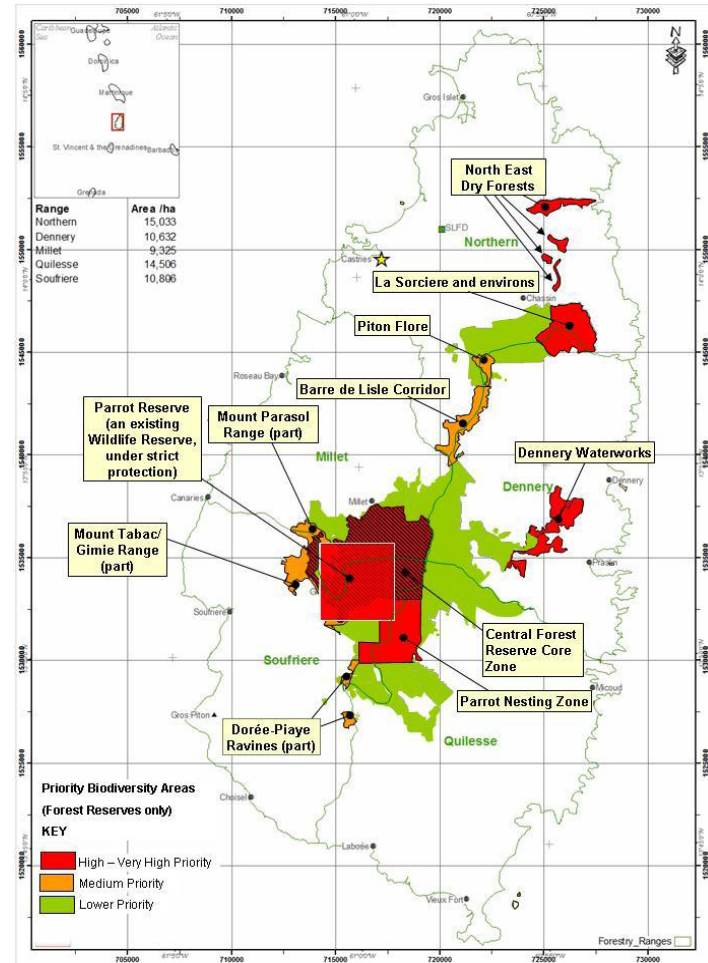




Priority areas for biodiversity conservation outside the Forest Reserve



Priority areas for biodiversity conservation within the Forest Reserve



National experience with assessing/ monitoring Biodiversity

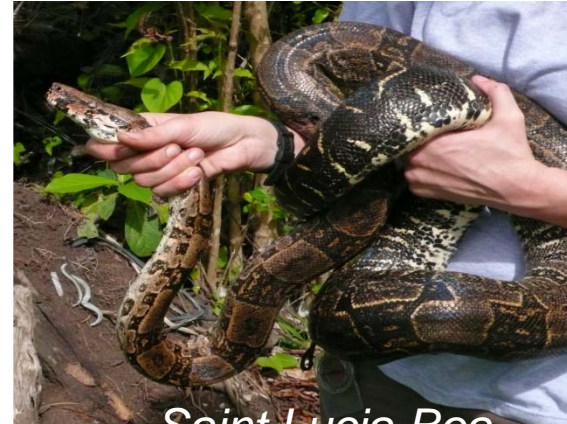
Information from the 2009 Biophysical Resource Inventory
used for the Global Forests Assessment report

- *The inventory results show*
 - *density of 540 trees per hectare.*
 - *Average Volume 305 cubic m/ha*
 - *Total volume 2.8 million cubic metres of timber.*
 - *An increase of 50 % in 27 yrs.*
 - *35% forest cover, comprising 17 major veg. types identified and described*
 - *Approximately 1.8 million tones of carbon are stored within the Forest Reserve and 1.2 million tones outside the Forest Reserve. With potential to increase when secondary forest mature.*



2009 Biodiversity inventory

945 native 'higher plants'
137 native ferns and club mosses
*182 native resident birds and
migratory*
17 native reptiles
2 native amphibians
10 native mammals
1,400 beetles
> 1,000's other invertebrates



9 endemic 'higher plants'
6 endemic birds (11 subspp.)
7 endemic reptiles (5 subspp.)
1 endemic amphibian
1 endemic mammal (1 subspp)
> 400 endemic beetles

*Many species were recorded in Saint Lucia
for the first time in 2009*

Biodiversity and indigenous and local livelihoods



- A review of the traditional livelihood activities indicate that these activities were not sustainable, as economic rates of return (ERR) and the impact on the resource were negative.
- Pilot project to improve sustainable use of biological resources includes:
 - sustainable cultivation of Latanye palm *Coccothrinax barbadensis*, used in the manufacture of brooms.
 - The developing community-based management sustainable management system to conserve Saint Lucia's globally important population of *Protium attenuatum in situ* while providing sustainable supply of frankincense and income to local people .





INTERNATIONAL YEAR
OF FORESTS • 2011



REDD-plus: Seeking synergies between the CBD and the UNFCCC

No REDD-Plus synergies; however, an initiative to create synergies between the two conventions exist through country Support Programme (CSP) National Portfolio Formulation Exercise (NPFE)

The NPFE is a priority setting tool and a guide to be used by countries to programme their GEF country allocation.

The recommendation is to include REDD-plus as part of the NPFE to ensure effective use of both human and financial resources.

It will also allow us to be a more proactive in obtaining funds for environmental management projects that have greater impact.



Challenges for biodiversity safeguards and REDD-Plus implementation including:

- *Need to strengthen national understanding and support for forest biodiversity conservation, with special attention to the contribution of forests in mitigation and adaptation to climate change and biodiversity conservation.*
- *Foster the development of civil society organizations and local experts capacity to lobbying for sustainable forest management financing and conservation of forest biodiversity.*



Convention on
Biological Diversity



**INTERNATIONAL YEAR
OF FORESTS • 2011**



Thank you!
Merci!
Gracias!