



**INTERNATIONAL YEAR
OF FORESTS • 2011**



China / State Forestry Administration

*Combined safeguards and sub-regional capacity
building workshop on REDD-plus, Singapore,
15-18 March 2011*

LI Diqiang, Research Institute of Forest
Environment, Ecology and Protection

WU Shuirong, Research Institute of Forestry
Policy and Information

Chinese Academy of Forestry



**INTERNATIONAL YEAR
OF FORESTS • 2011**



National experience with REDD-plus



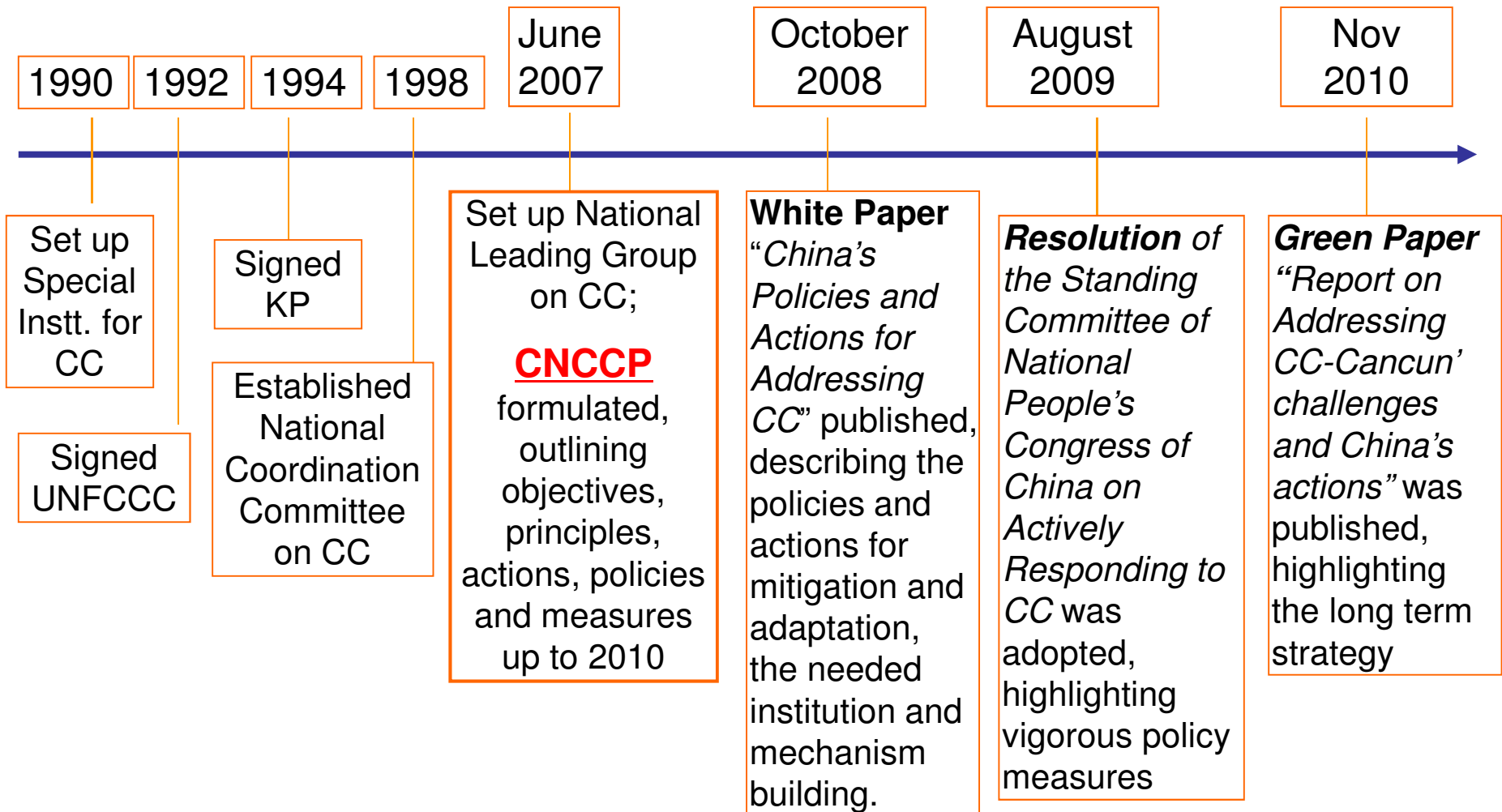
Convention on
Biological Diversity



INTERNATIONAL YEAR
OF FORESTS • 2011



China's Response to CC





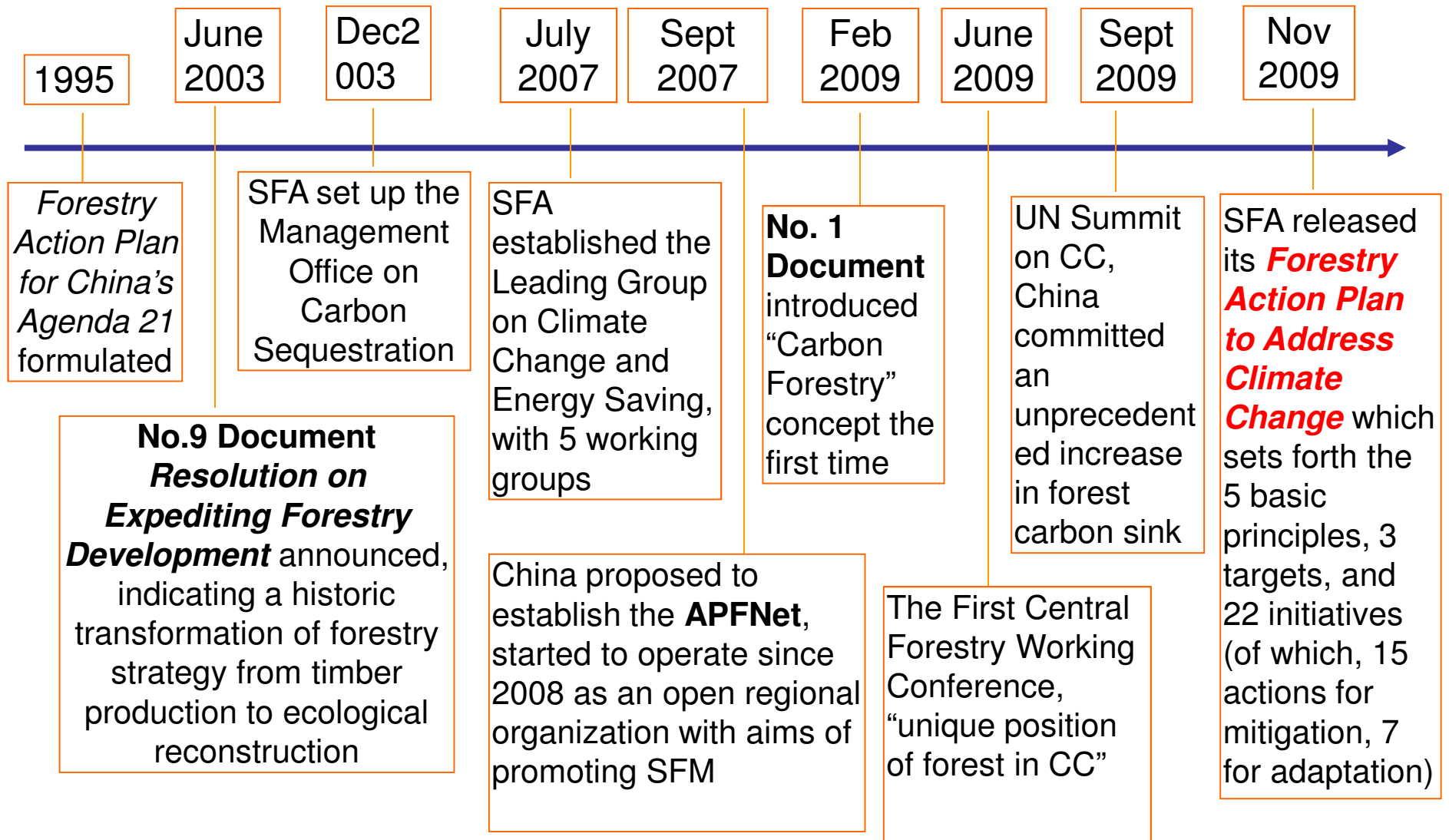
Convention on
Biological Diversity



INTERNATIONAL YEAR
OF FORESTS • 2011



Response of forest sector





INTERNATIONAL YEAR
OF FORESTS • 2011



National targets in response to climate change

- To cut CO₂ emissions per unit of GDP by 40% - 45% by 2020 from the 2005 level;
- To increase forest area by **40 million ha** and forest stocking volume by **1.3 billion m³** by 2020 from the 2005 levels;
- To increase the share of non-fossil fuels in primary energy consumption to around 15% by 2020;
- To develop green economy, low carbon economy and circular economy and enhance research, development and dissemination of climate-friendly technologies.



**INTERNATIONAL YEAR
OF FORESTS • 2011**



Forestry Action Plan to Address Climate Change

- Key Areas (and major actions)

Mitigation:

- Afforestation (nationwide voluntary tree-planting campaign; Six Key forestry programs; valuable wood cultivation)
- Forestry biomass energy (cultivation of energy forests with integration of processing and utilization)
- Sustainable forest management (forest management program for commercial forests and ecological forests)
- Protection of forest resources (logging management; requisition and exploration management of forestland; forestry law-enforcement capability; forest fire protection capability; prevention and control capability of forest pests, rats and hares)



**INTERNATIONAL YEAR
OF FORESTS • 2011**



Forestry Action Plan to Address Climate Change (cont...)

Mitigation (cont...):

- Forestry industry (development and utilization of biomass material; efficiency of timber recycled utilization)
- Wetland restoration, conservation and use (rescuing conservation and restoration; demonstration of sustainable agriculture, animal husbandry and fishery development)



**INTERNATIONAL YEAR
OF FORESTS • 2011**



Forestry Action Plan to Address Climate Change (cont...)

Adaptation:

- Forest ecosystem (plantation ecosystem; establishment of nature reserve; intensification of conservation with key species; wildlife epidemic-stricken area and disease monitoring and pre-warning capability)
- Desertification ecosystem (vegetation protection in decertified areas)
- Wetland ecosystem (fundamental work of wetland conservation such as survey and evaluation etc; network of wetland nature reserves)



Deforestation (RED)



IDRI

BRAZIL

Deforestation and
Degradation (REDD)



CATIE*

CANADA

AOSIS

CCAP

NEW ZEALAND

C SERGE

NORWAY

CIRM

EDF

GREEN PEACE

COMIFAC

HSI

IIASA

MALAYSIA

IOANNEM

MEXICO

JRC

PANAMA

TNG

WHRC

TUVALU

TCG

AUSTRALIA

CHINA

EU

COLOMBIA

JAPAN

INDIA

USA

INDONESIA

Deforestation, Degradation
and Enhancement (REDD+)



□ Non-
governmental
proposals

■ Developed
countries

■ Developing
countries

China propose: treats equally reducing emissions from deforestation and forest degradation in developing countries, and role of conservation, sustainable management of forests and enhancement of forest carbon stocks in developing countries.



**INTERNATIONAL YEAR
OF FORESTS • 2011**

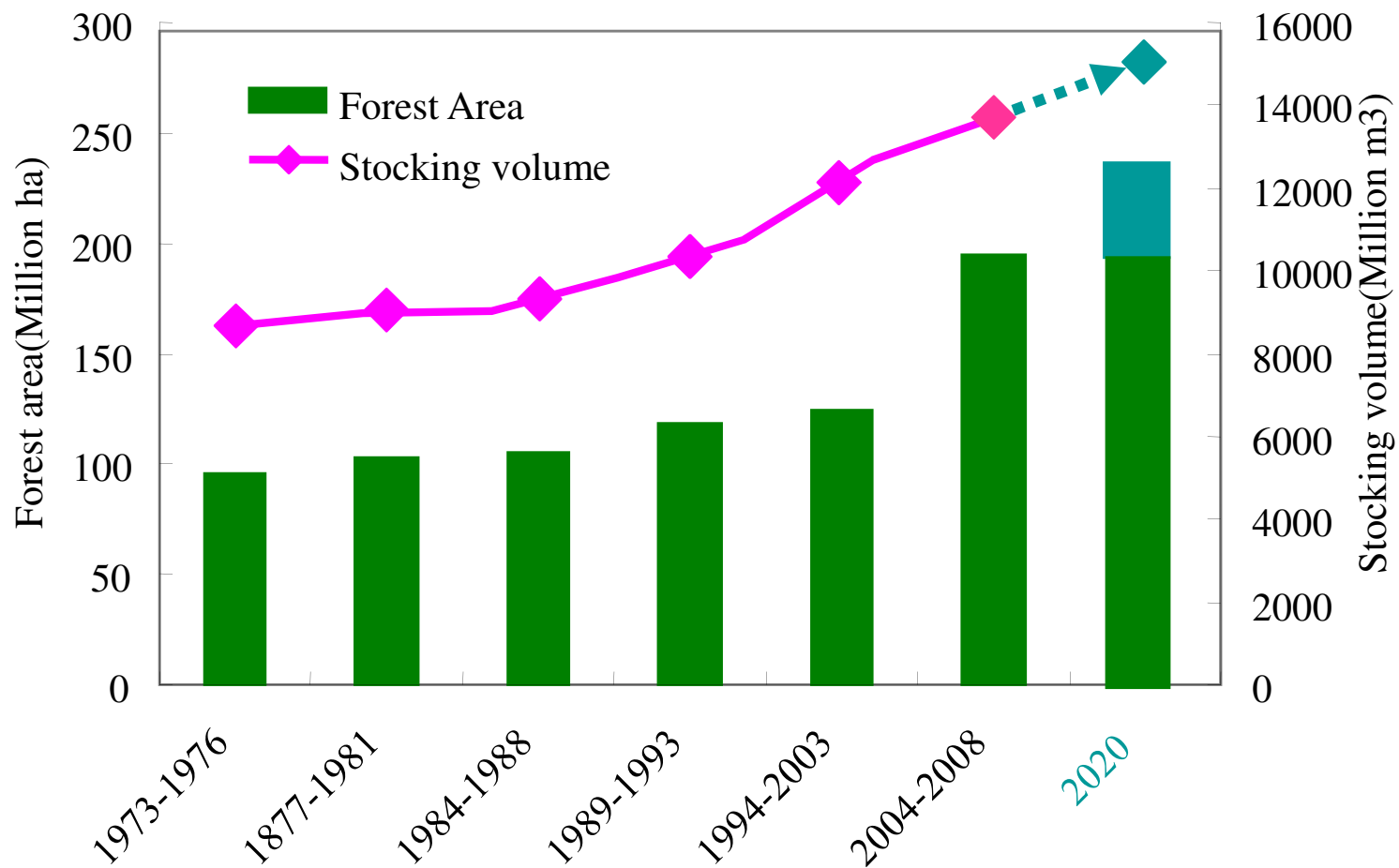


Options and potentials in mitigating CC

- **Increasing carbon sink**
 - increase of forest areas by afforestation
 - quality improvement of existing forests
- **Reducing carbon/GHG emission**
 - strengthening forest protection
 - wetland protection and soil and water control of forestland
 - substitution of fossil fuel with development of forest biomass energy
- **Increasing carbon storage**
 - extending timber utilization and its service life



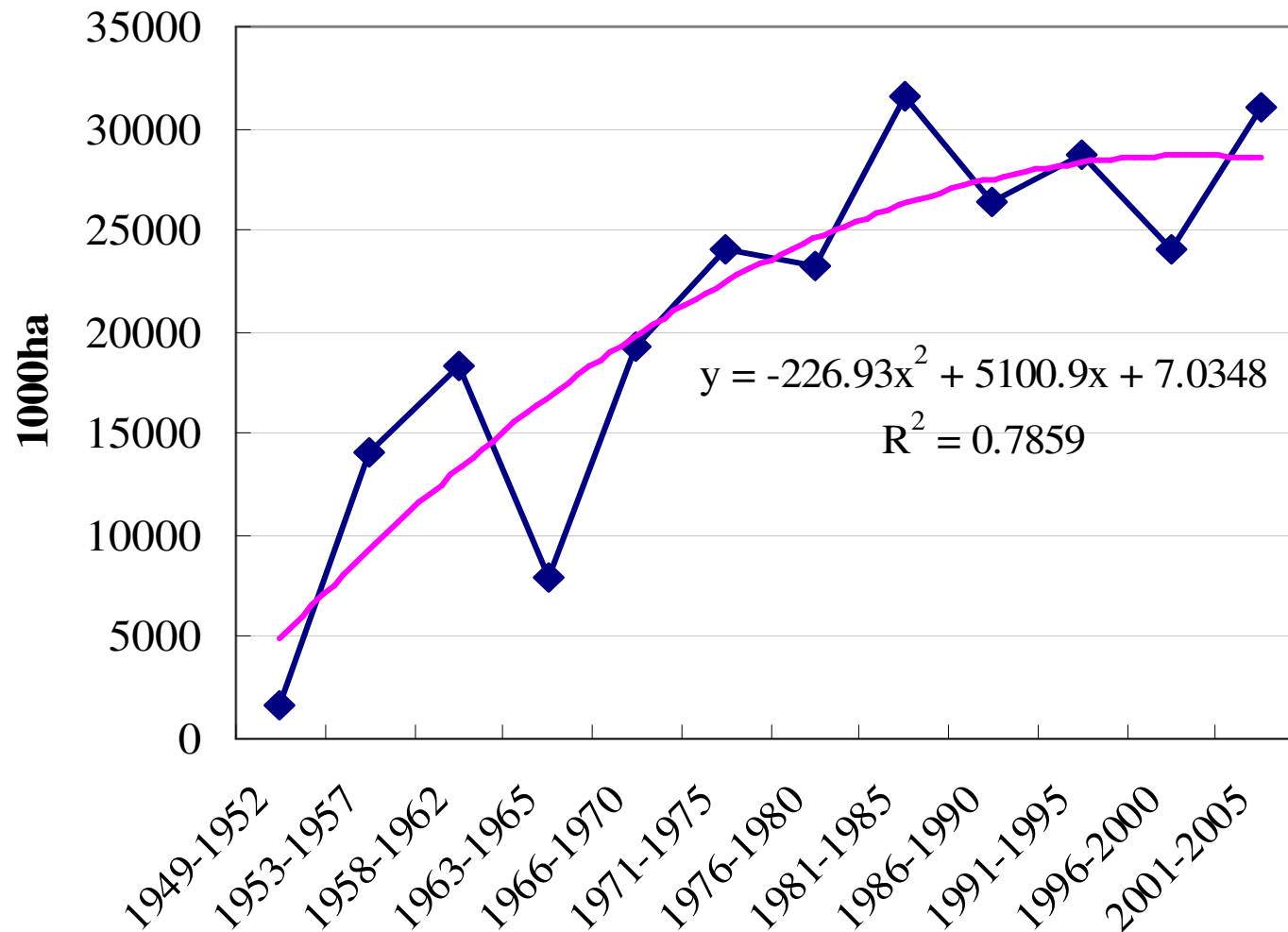
Forest resources development and target



Source: forest inventory data



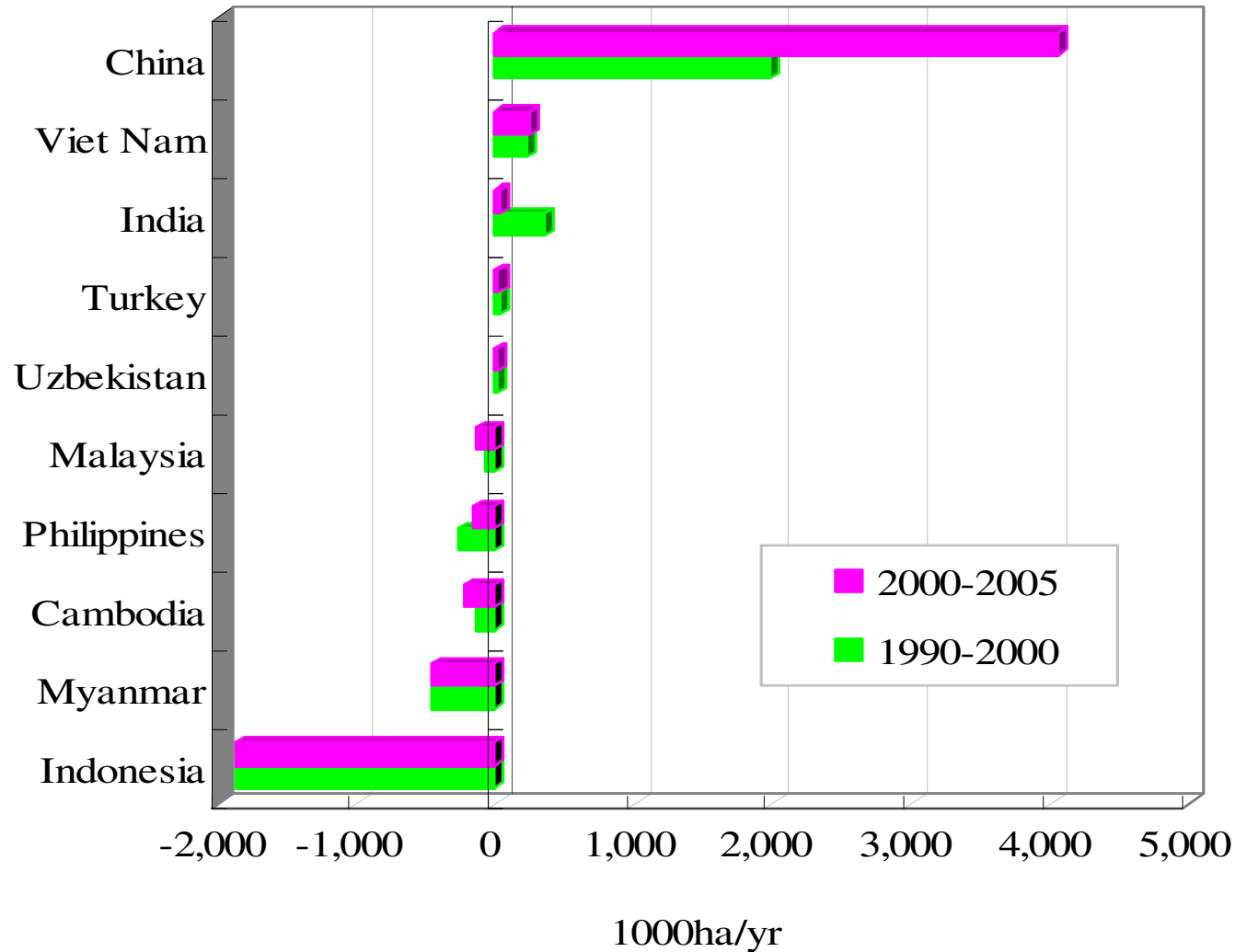
Forest planting area increasing



Average planting area per year between 1949-2007: **4.4Mha**



Change of planted forest area by countries

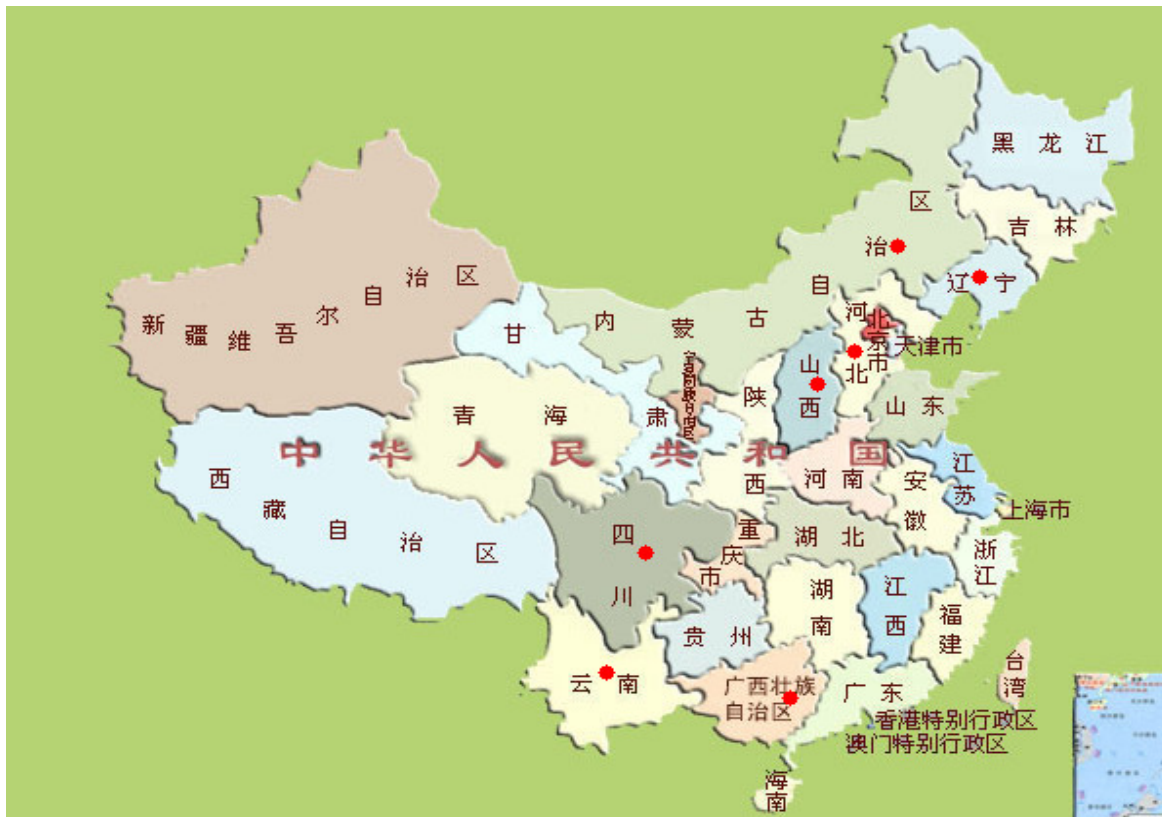




Development of forest carbon markets

- **Promoting CDM projects**

- one under KP – the first worldwide forestry CDM project in 2006
- 5 more under development within the framework of CCB standards
- 4 more pilot projects under implementation or development





INTER
OF

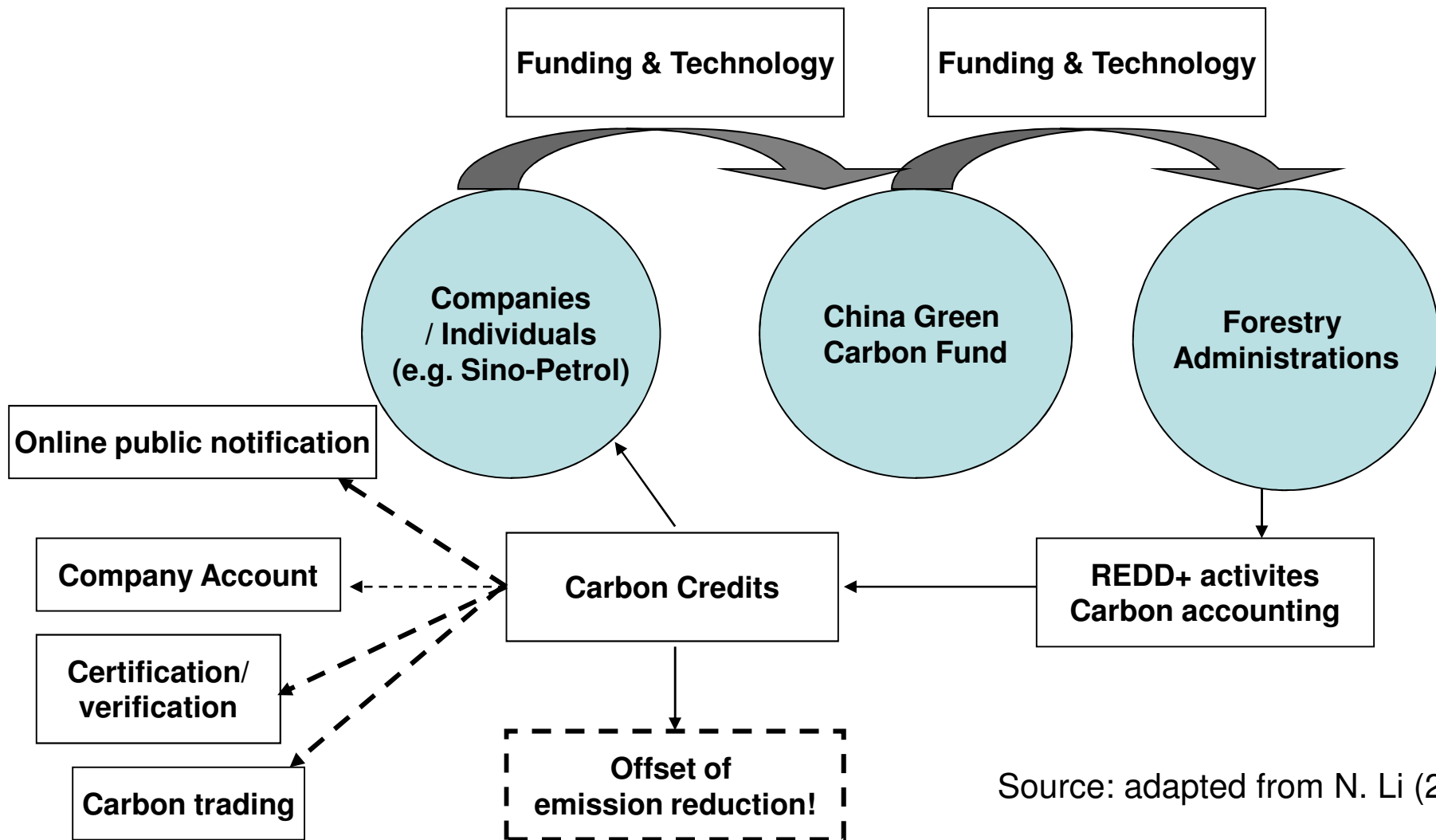


• Establishment of China Green Carbon Foundation

- July 2007, SFA established the China Green Carbon Fund
- July 2010, developed as the China Green Carbon Foundation
- The purposes:
 - to increase the public awareness and provide access to pursuing low carbon economy;
 - to provide a platform for domestic companies and the public;
 - to promote the development of an ES market in China.
- More than 10 regulatory documents formulated for a sound management of the Foundation
- Since July of 2010, 96.8 million yuan RMB raised from companies and individuals; more than 8000 ha afforested in 9 provinces with expectation of producing carbon credits.



China Green Carbon Fund: operational model



Source: adapted from N. Li (2008)



**INTERNATIONAL YEAR
OF FORESTS • 2011**



National experience with biodiversity safeguards

- **Strong political support at central and provincial levels for including biodiversity safeguards**
 - 2531 nature reserves have been established, accounting for 15.2% of land area, Out of total 600 ecosystems, 100 of 120 priority ecosystem types are covered by the NR system. 85% terrestrial ecosystems, 85% wildlife species and 65% high plant species, 20% natural forests and 40% nature wetland are covered by the NR system.
- **Strengthening fundamental work and capacity building at various levels**

Main obstacles for including biodiversity safeguards



- Key issues:
 - Over-exploitation of resources
 - Environmental pollution and development and construction
 - Monoculture of forest species
 - invasive alien species
- **Underlying Drivers of Biodiversity Loss**
 - Population
 - Poverty
 - Economic development
 - Governance structure and reform

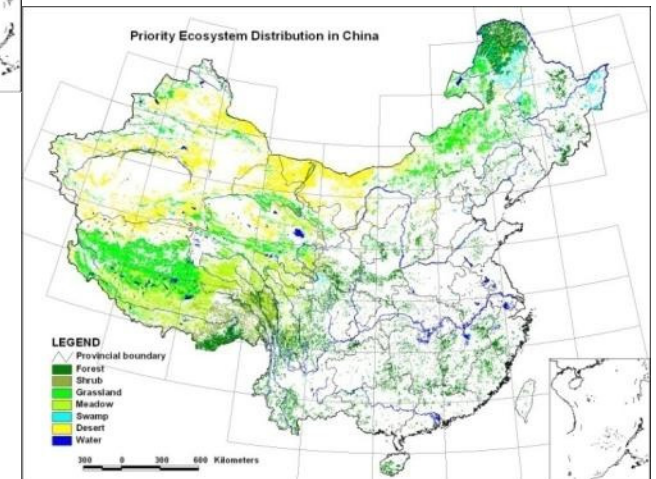
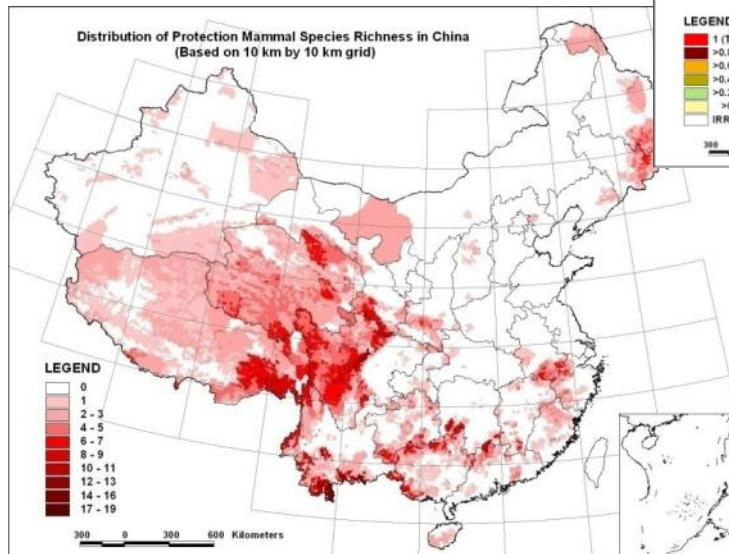
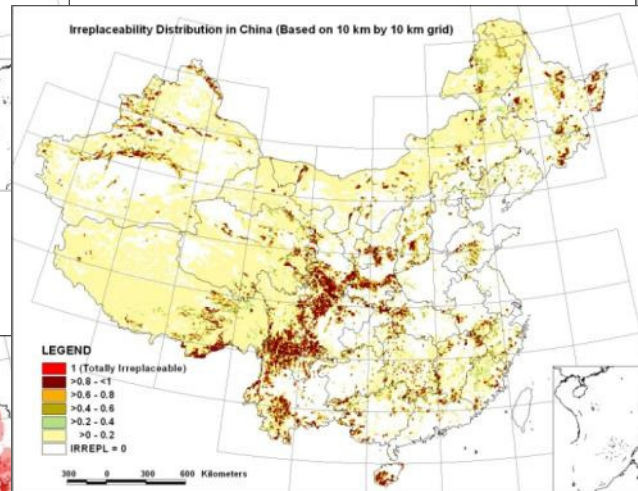
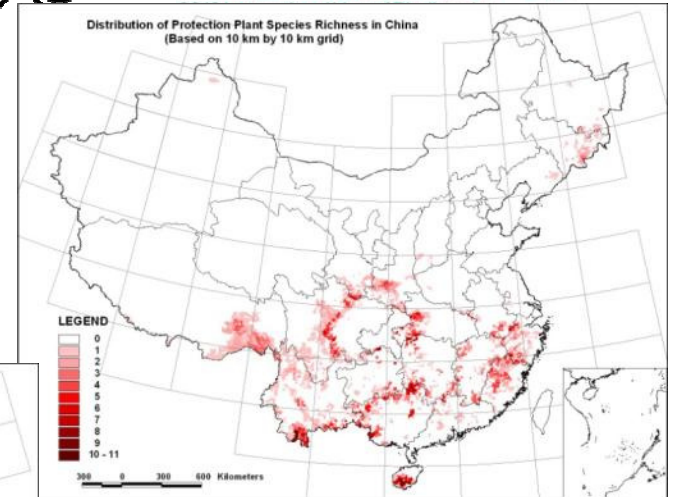
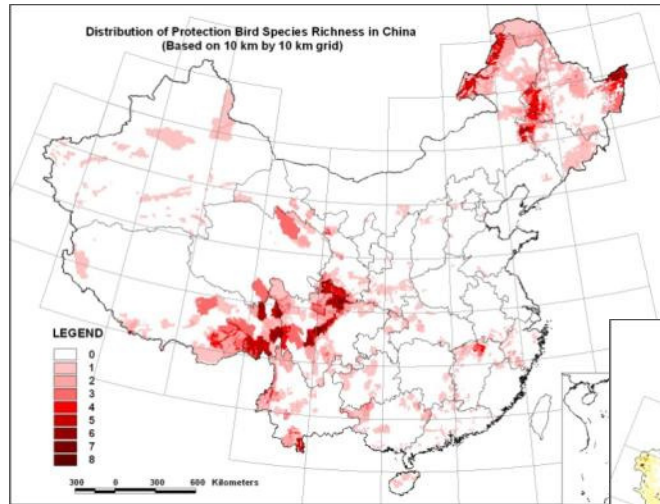
National Biodiversity conservation strategy and action plan(2011-2030)



- Enhancing policy and laws studies on Biodiversity conservation
- Biodiversity inventory, monitoring and research
- In-situ conservation of Biodiversity
- Ex-situ conservation of Biodiversity
- Benefit sharing for genetic resources and Traditional knowledge
- Bio-security
- Climate change adaptation



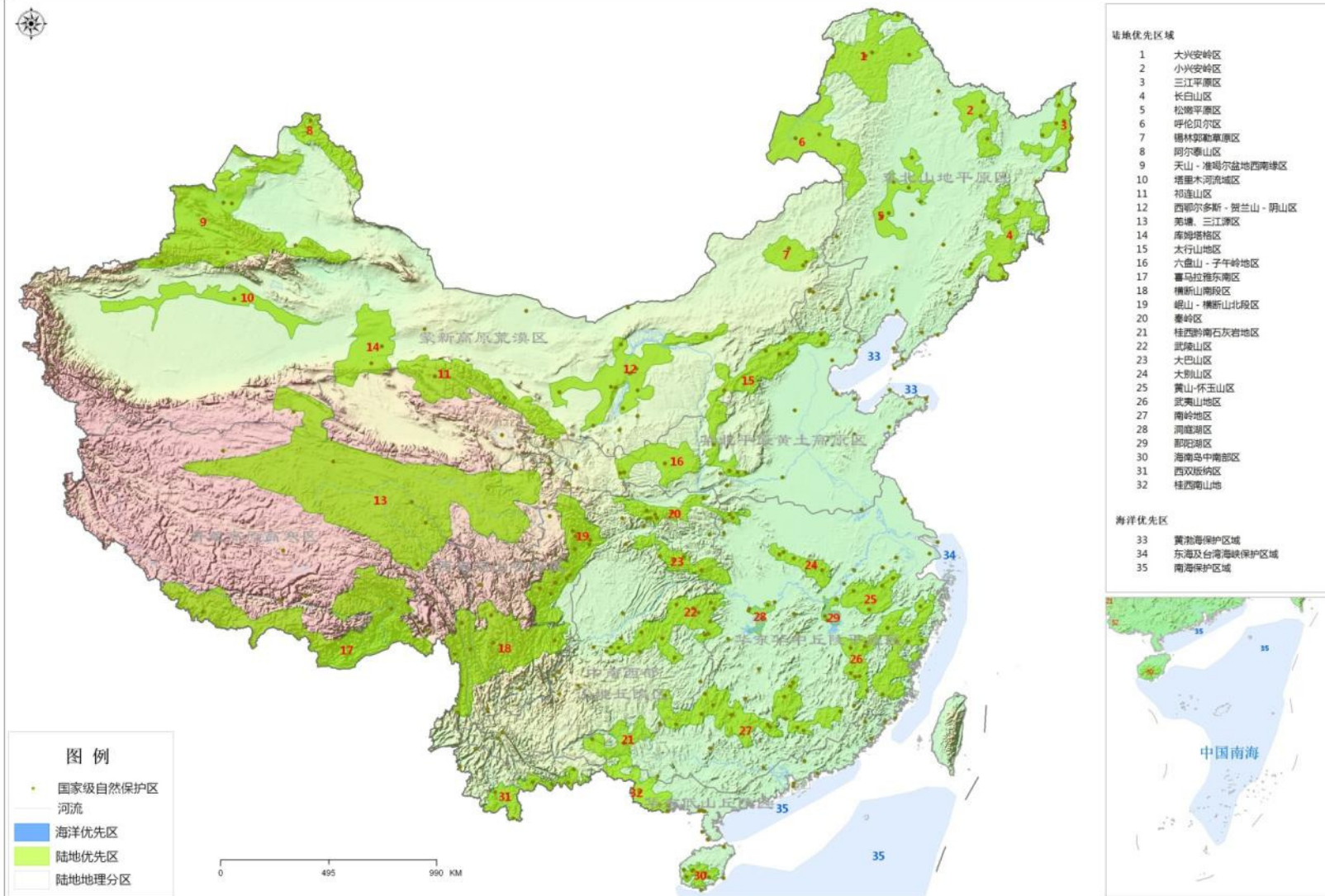
Gap analysis in China



Biodiversity Conservation Priority area in China



中国生物多样性保护优先区域





**INTERNATIONAL YEAR
OF FORESTS • 2011**



National experience with safeguards for indigenous and local communities



**INTERNATIONAL YEAR
OF FORESTS • 2011**



Forest governance and tenure reform

- China: two types of forest ownership
 - - state-owned, 42% forest area and 68% volume;
 - - collective, 58% forest area and 32% volume.
- China is speeding up the trend of decentralization and privatization of forest management through collective forest tenure reform (2004)
- clarifying and safeguarding the property rights of land and forests
- attracting private investment and motivating farmers to practice forest management by three measures (tax reduction, eliminating obligations, creating of forest asset marketing system)
- As of now, 149 million ha decentralized to farmer households, accounting for 81.69% of the total collective forestland. More than 300 million farmers benefit from the reform directly. Plantation managed by individuals accounted for 60% of total plantation.
- The security of forest rights and land tenure is one of the key issues and preconditions for SFM and forest conservation, good basis for the success of any REDD+ initiative.



**INTERNATIONAL YEAR
OF FORESTS • 2011**



Forest governance and tenure reform (cont...)

- **Characteristics:**
 - longer contract period (30-70 years)
 - a bundle of rights (transferability, inheritance, mortgageability, harvest rights, freedom of production decision, contract length, etc)
 - democratic decision making (two-thirds vote either by the entire village assembly or the committee of village representatives) , voluntary participation
 - integration with rural development
- **Coherent supportive policy reform:**
 - reducing forest levies (tax reduction, eliminating obligations);
 - creating of forest asset marketing system → transfer of forests and lands
 - promoting market instruments, linkage between production and processing, etc.
 - financing and assurance support;
 - institutional support, promoting farmers' associations

National experience with assessing/ monitoring impacts of REDD-plus



Revised CCB criteria for CDM (REDD+) Project design

- **CLIMATE SECTION**
 - CL1. Net Positive Climate Impacts
 - CL2. Offsite Climate Impacts ('Leakage')
 - CL3. Climate Impact Monitoring
- **COMMUNITY SECTION**
 - CM1. Net Positive Community Impacts
 - CM2. Offsite Stakeholder Impacts
 - CM3. Community Impact Monitoring
- **BIODIVERSITY SECTION**
 - B1. Net Positive Biodiversity Impacts
 - B2. Offsite Biodiversity Impacts
 - B3. Biodiversity Impact Monitoring



**INTERNATIONAL YEAR
OF FORESTS • 2011**



Regional collaboration regarding safeguards and impact assessment

- September 2007, China's President proposed to establish the Asia-Pacific Network for Sustainable Forest Management and Rehabilitation (APFNet), which was agreed by the 15th APEC Economic Leaders' Meeting in Sydney, Australia and was incorporated in the Sydney APEC Leaders' Declaration on Climate Change, Energy Security and Clean Development.
- The APFNet as an open regional organization has started to operate since 2008 with the aims of promoting and improving sustainable forest management and rehabilitation in the Asia-Pacific region.
- Based on this platform, the regional and international cooperation supposed to be actively developed.

thank you!
merci!
¡gracias!

**INTERNATIONAL YEAR
OF FORESTS • 2011**



Contact us at:
lidq@caf.ac.cn,
wushuirong@caf.ac.cn



中國林業科學研究院