



General Introduction to Protected Areas and IUCN's Role in Protected Areas

Sub-Regional Workshop for West Asia and North Africa on Capacity Building
for the Implementation of the CBD Programme of Work on Protected Areas
Dubai, 16-20 April 2012





This presentation will cover:

- ✓ **What are Protected Areas;**
- ✓ **What is IUCN's role;**
- ✓ **Key future challenges.**

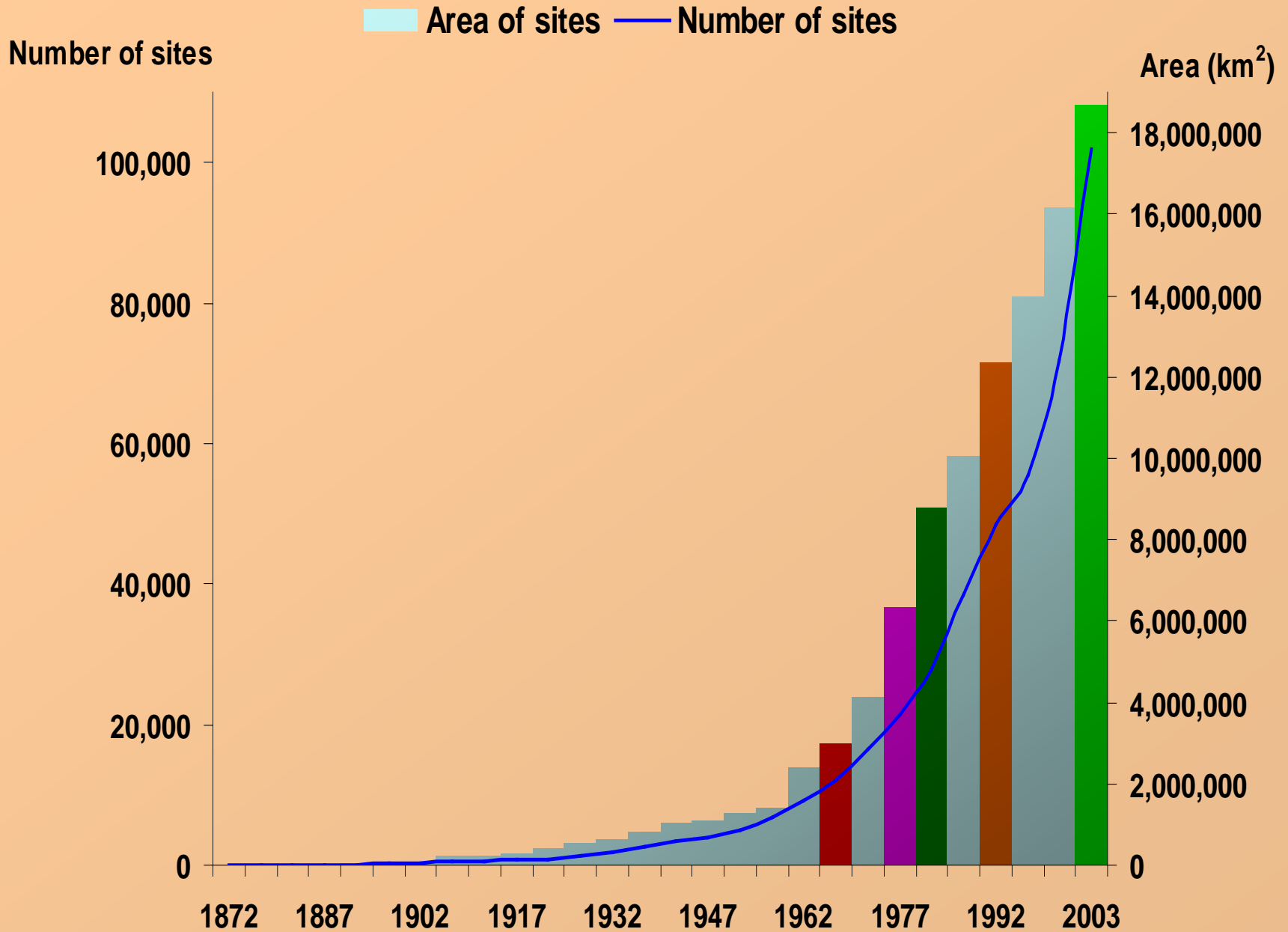
What is a Protected Area ?

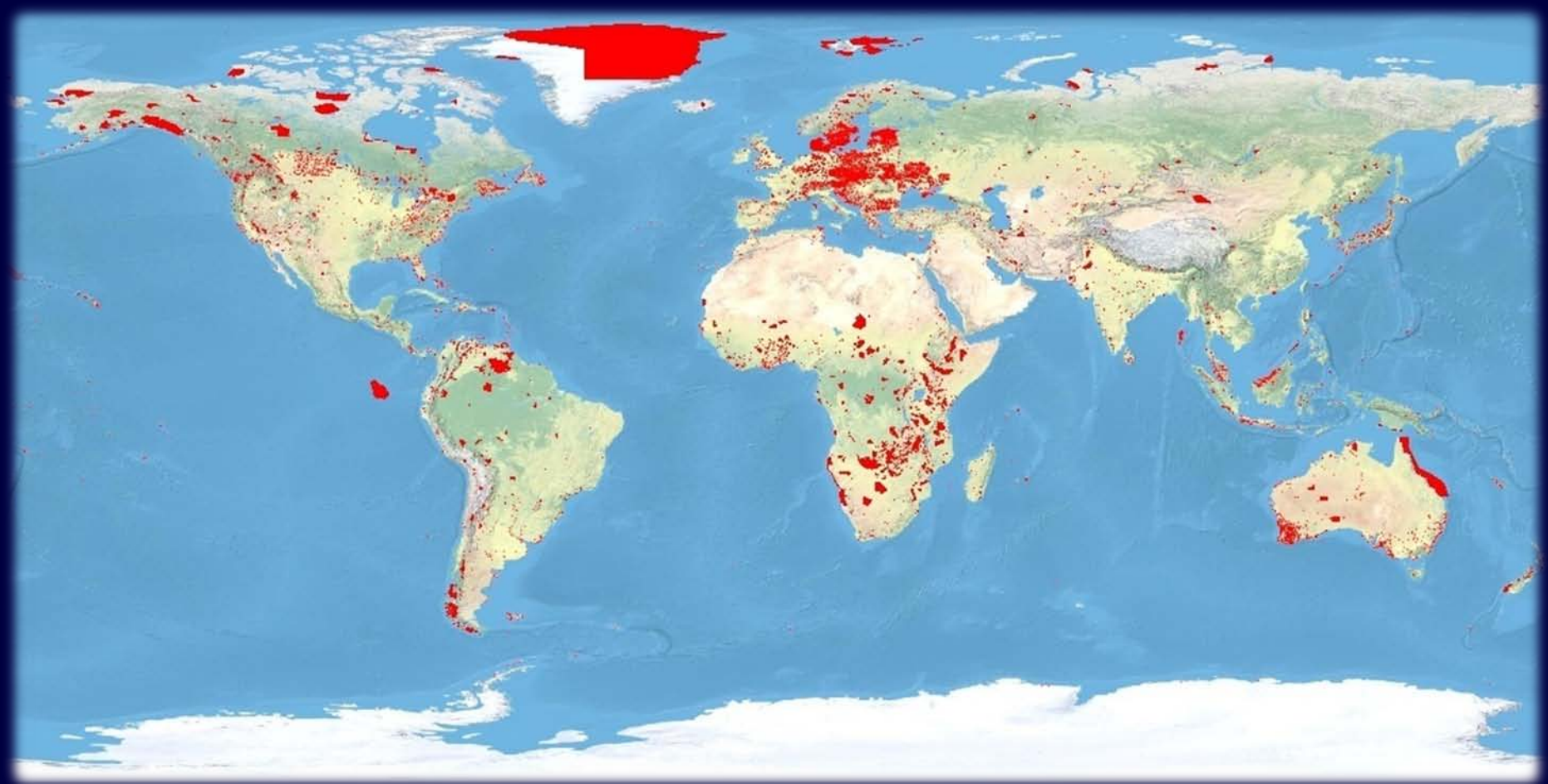
« A clearly defined geographic space, recognized, dedicated and managed, through legal or other effective means, to achieve the long term conservation of nature with associated ecosystem services and cultural values» IUCN 2008



Protected Areas now cover more than 12% of the earth's surface. The numbers of such areas have increased rapidly in recent years and protected areas are now a major land use in their own right

Figure 1: Cumulative Growth in Protected Areas by 5 Year Increment: 1872-2003





The Worlds Protected Areas

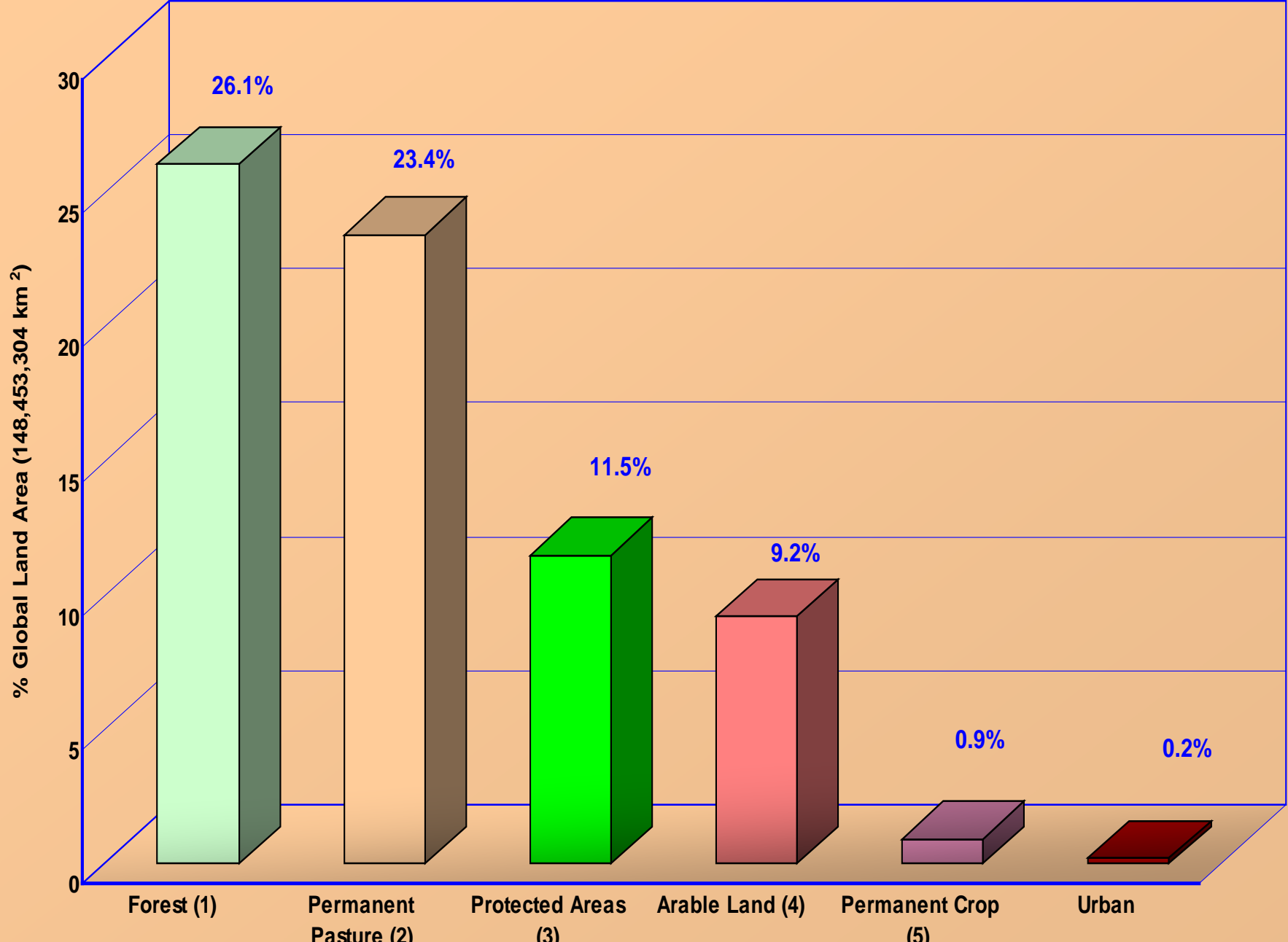
1980: 40,000 protected areas covering 7,000,000 km²

2007: 106,000 protected areas covering 18,000,000 km²

UNEP World Conservation Monitoring Centre

UNEP World Conservation Monitoring Centre

Figure 2: Protected Areas as Proportion of Global Land Use





Well managed Protected Areas are essential for addressing biodiversity loss and for protecting species – particularly those threatened by habitat loss



- Introduction
- Partners & Credits
- Red List Programme
- Data Organization
- Summary Statistics
- Sources & Quality
- Categories & Criteria
- Authority Files
- Photo Gallery
- References
- Publications & Links
- FAQs



The IUCN Species Survival Commission

2006 IUCN Red List of Threatened Species™



SEARCH

**EXPERT
SEARCH**



What's new? Last updated on 26 April 2006.

© International Union for Conservation of Nature and Natural Resources, [Contact Information](#)





IUCN's role in protected areas:

recognized as a global leader in relation to protected areas, particularly in relation to standard setting, provision of policy advice and convening key forums and dialogues



Our mission:

***to promote an effectively managed,
representative system of marine and
terrestrial protected areas***



How do we work ?

- **The IUCN Programme on Protected Areas (PPA) is a Secretariat Programme based in IUCN HQ and increasingly in most IUCN Regions**



How do we work ?

- **The IUCN World Commission on Protected Areas (WCPA) is the world's leading network of protected areas specialists and has 1,400 members in 150 countries**
- **PPA and WCPA work together as « One Programme » to deliver IUCN's work in relation to protected areas**



Key IUCN strengths and activities in protected areas include:

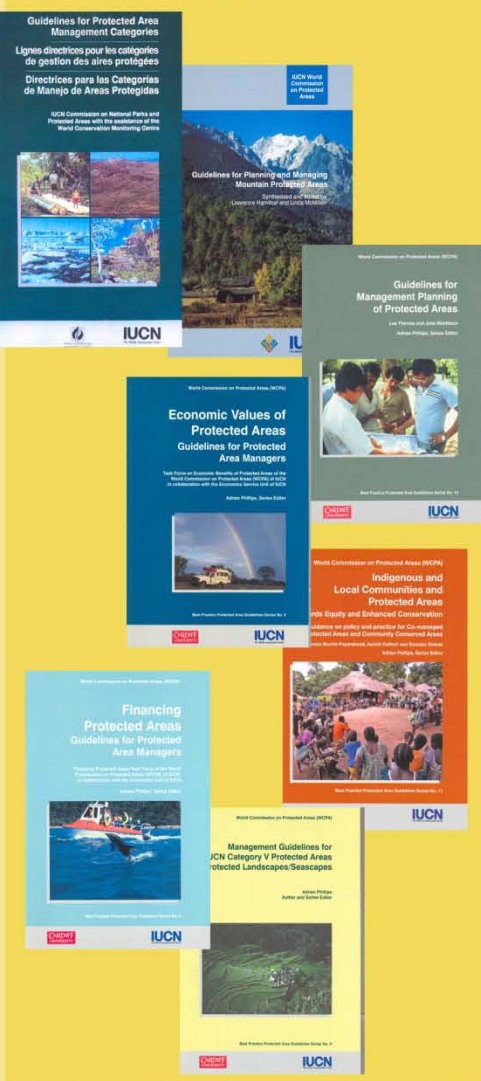
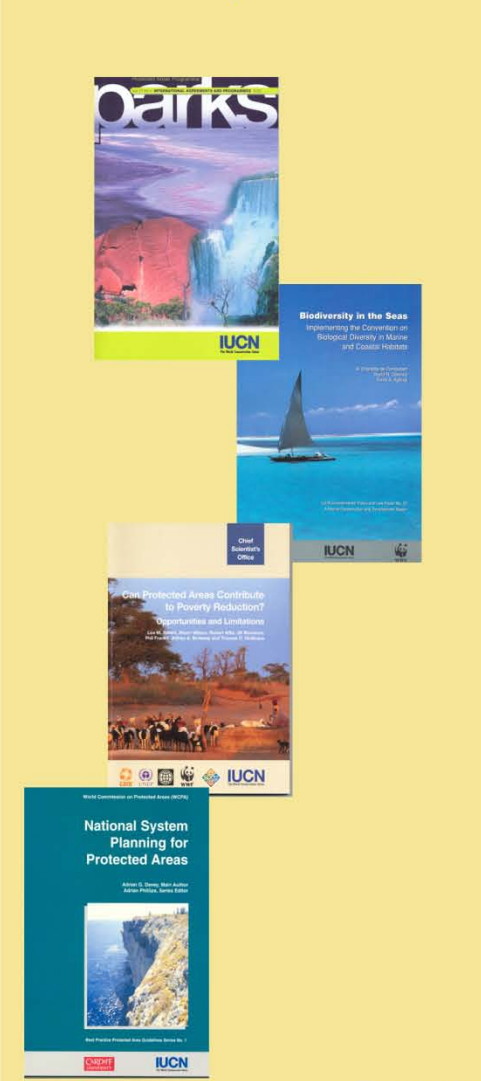
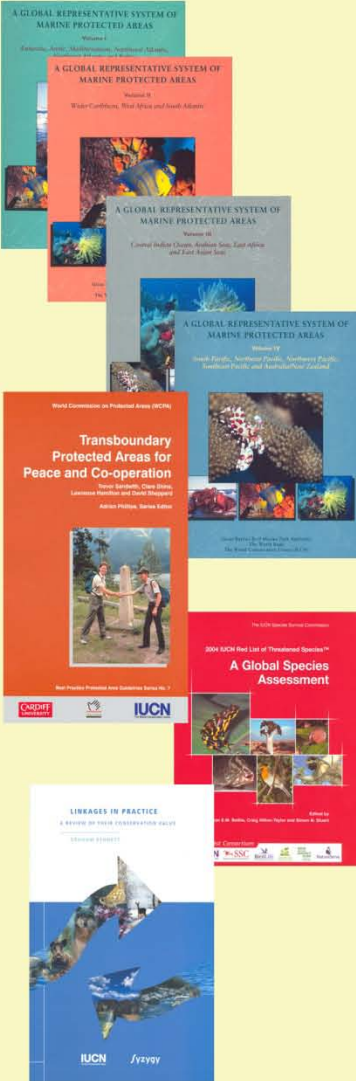
- 1) Knowledge – preparation of practical guidance on a range of management issues, such as through the Protected areas Best Practice Series**

Identification

Designation

Management

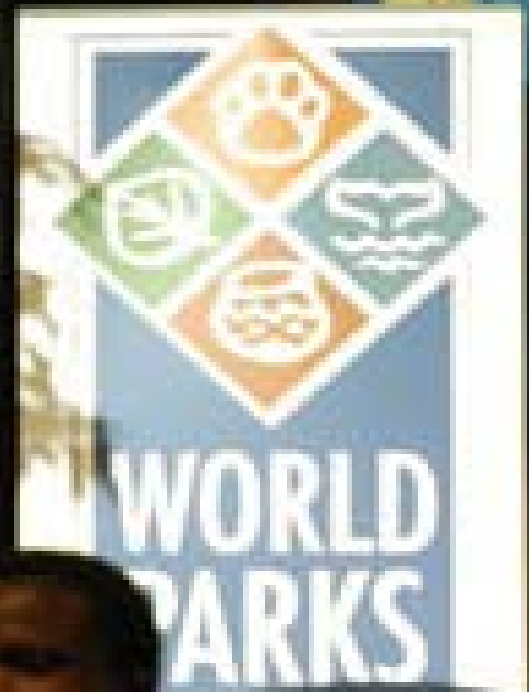
Monitoring & Evaluation





Key IUCN strengths and activities in protected areas include:

- 2) Convening – major events such as the World Parks Congress, convened by IUCN every 10 years**





Key IUCN strengths and activities in protected areas include:

- 3) Standard Setting – such as in relation to the IUCN PA Category System**



Key IUCN strengths and activities in protected areas include:

- 4) Advising Conventions and Agreements: such as the World Heritage Convention and the Convention on Biological Diversity**



IUCN's Role in World Heritage

IUCN is the Advisory Body for natural Sites for the WH Convention. This involves: (a) evaluation of new sites; (b) preparation of **State of Conservation Reports; and (c) support to training and capacity building activities.**





Key IUCN strengths and activities in protected areas include:

- 5) Support for protected areas field projects, such as training PA managers in many countries**



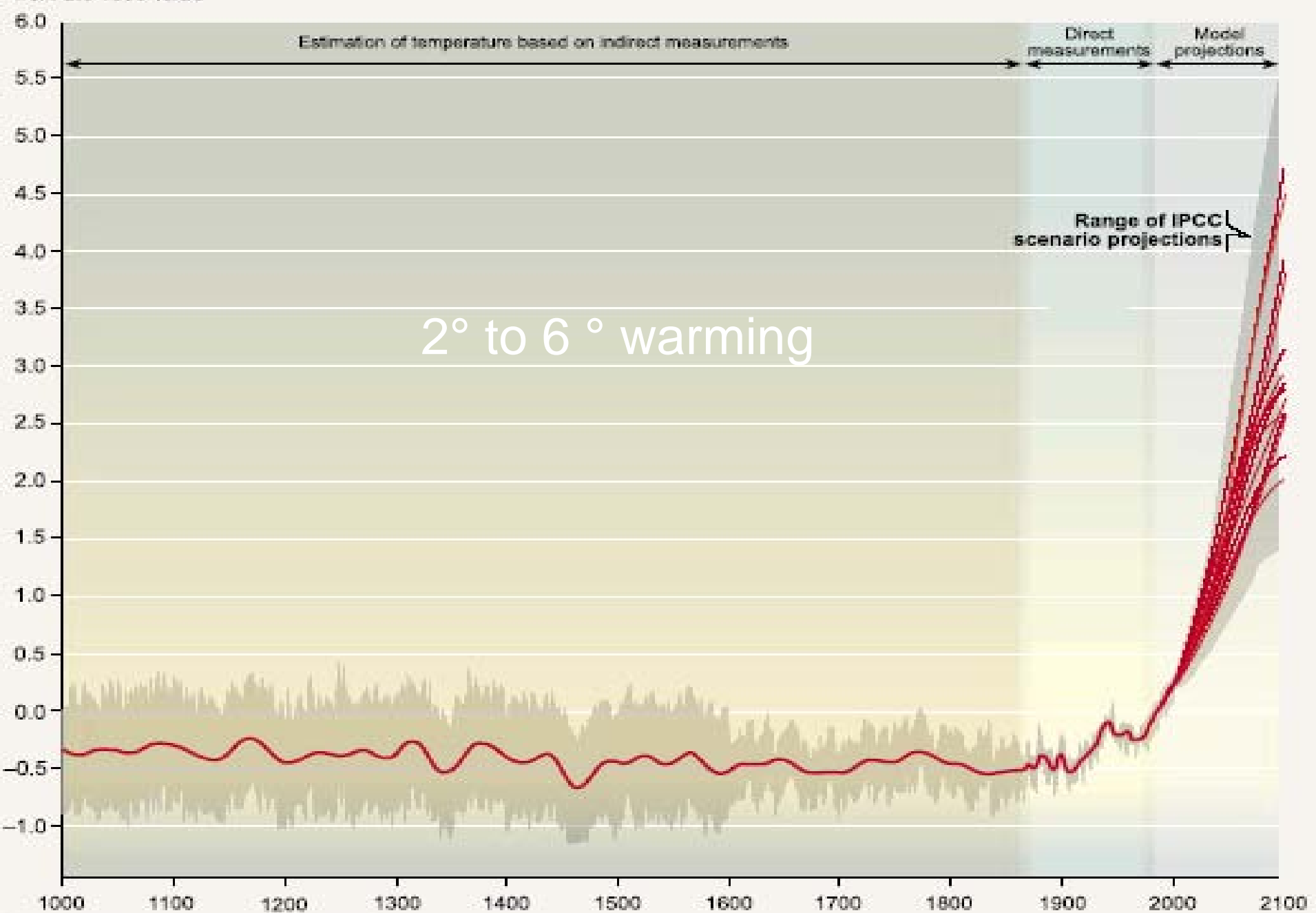
PAs Management Planning Training
Workshop/UAE (Nov.2009)



FUTURE DIRECTIONS INCLUDE:

- (1) Addressing impacts of climate change. Particularly through developing landscape level initiatives which link protected areas with other land uses.**

Differences in temperature in °Celsius
from the 1990 value



Great Barrier Reef could die by 2050

Reuters

147 FEB 4, 2007

CANBERRA: From a boat at sea, the Australian Great Barrier Reef seems invincible, its myriad corals stretching beyond sight.

But the reef's vastness covering 2,300 kilometers, or 1,450 miles, and wave-smashing outcrops mask fragility in the face of climate change threatening to bleach its fluorescent depths the stark white of death.

The reef, and possibly the 5.8-billion-Australian-dollar, or \$4.5-billion, tourist industry it underpins, will be "functionally extinct" by 2050, said a draft report by the Intergovernmental Panel on Climate Change.

"Climate change is clearly a threat to the corals and the tiny plants that live in the tissues, but the issues go far beyond coral," said Ove Hoegh-Guldberg, a coral bleaching researcher at the University of Queensland. "Corals build a structure in which thousands of species live."

Coral bleaching caused by rising temperatures has struck many reefs around the world, hitting the Indian Ocean, parts of the Caribbean and off Australia. It occurs when corals living at the edge of their temperature tolerance expel the tiny animals that live inside, turning colorless and exposing their calcium skeletons inside.

Death follows unless the water soon cools. Global warming makes future salvation less likely.

"Coral bleaching can occur for a number of different reasons, but more recently, its been occurring because the seas in the tropical parts of the world are becoming too warm," Hoegh-Guldberg said.

Climatologists say Australia is suffering an "accelerated climate change," putting the Great Barrier Reef corals at particular risk.

The reef is home to more than a third



Reuters

Global warming could result in all of the Great Barrier Reef in Australia being bleached out like the coral, above, at the Keppel Islands on the southern section of the reef.

of the world's soft corals, more than 1,500 species of fish and 6 of the world's 7 marine turtle species.

Indian Ocean corals were harder hit than those around Australia with 50 percent dying along the western India rim within months in 1998.

Tim Flannery, a scientist selected in January as The Australian of the Year, said a report released Friday on climate change blaming humans for rising glob-

al temperatures underestimated the speed of climate change. He said its findings were conservative.

"The actual trajectory we've seen in the Arctic over the last two years if you follow that, that implies that the Arctic ice cap will be gone in the next 5 to 15 years," Flannery told an Australian radio program. "There's a 10 percent chance of truly catastrophic rises in temperatures."



FUTURE DIRECTIONS INCLUDE:

(2) Targeted expansion of PAs in poorly represented biomes. Increasing the protection of the marine environment is a major priority



PA Coverage in the marine environment is less than 7%





FUTURE DIRECTIONS INCLUDE

- (3) Strengthening management effectiveness (capacity building and PA finance). The IUCN Management effectiveness framework is a tool being used in many countries**

World Commission on Protected Areas (WCPA)

Evaluating Effectiveness

A Framework for Assessing the Management of Protected Areas

Marc Hockings (WCPA Management Effectiveness
Task Force) with Sue Stolton and Nigel Dudley
(WWF/IUCN Forest Innovations Project)

Adrian Phillips, Series Editor



Best Practice Protected Area Guidelines Series No. 6



FUTURE DIRECTIONS INCLUDE

- (4) Involving local communities and Indigenous Peoples in protected areas. Community Conserved Areas – Pas managed by local communities have become increasingly important**



THANK YOU

Khaldoun Alomari

Protected Areas Program Officer/Species Focal Point

Regional Office for West Asia (ROWA)

IUCN (International Union for Conservation of Nature)

Um Uthaina, Tohama Str. No. 6

Tel: 00962 6 5546912/3/4, Fax: 00962 6 5546915

Mobile: 00962777888344, www.iucn.org/westasia