

KENYA



Corbis

# MANAGING URBAN BIODIVERSITY IN KENYA – NAIROBI EXPERIENCE

NAIROBI'S CITY PRESENTATION  
IN CURITIBA, BRAZIL – 27<sup>TH</sup> MARCH 2007



HIS WORSHIP, THE DEPUTY MAYOR,  
CLLR. F. WAITITU

Running the Race Towards  
Achieving the 2010  
Biodiversity Targets

# ✦ CITY OF NAIROBI - KENYA

✦ **Area** : 680 Km<sup>2</sup> (Size of Singapore)

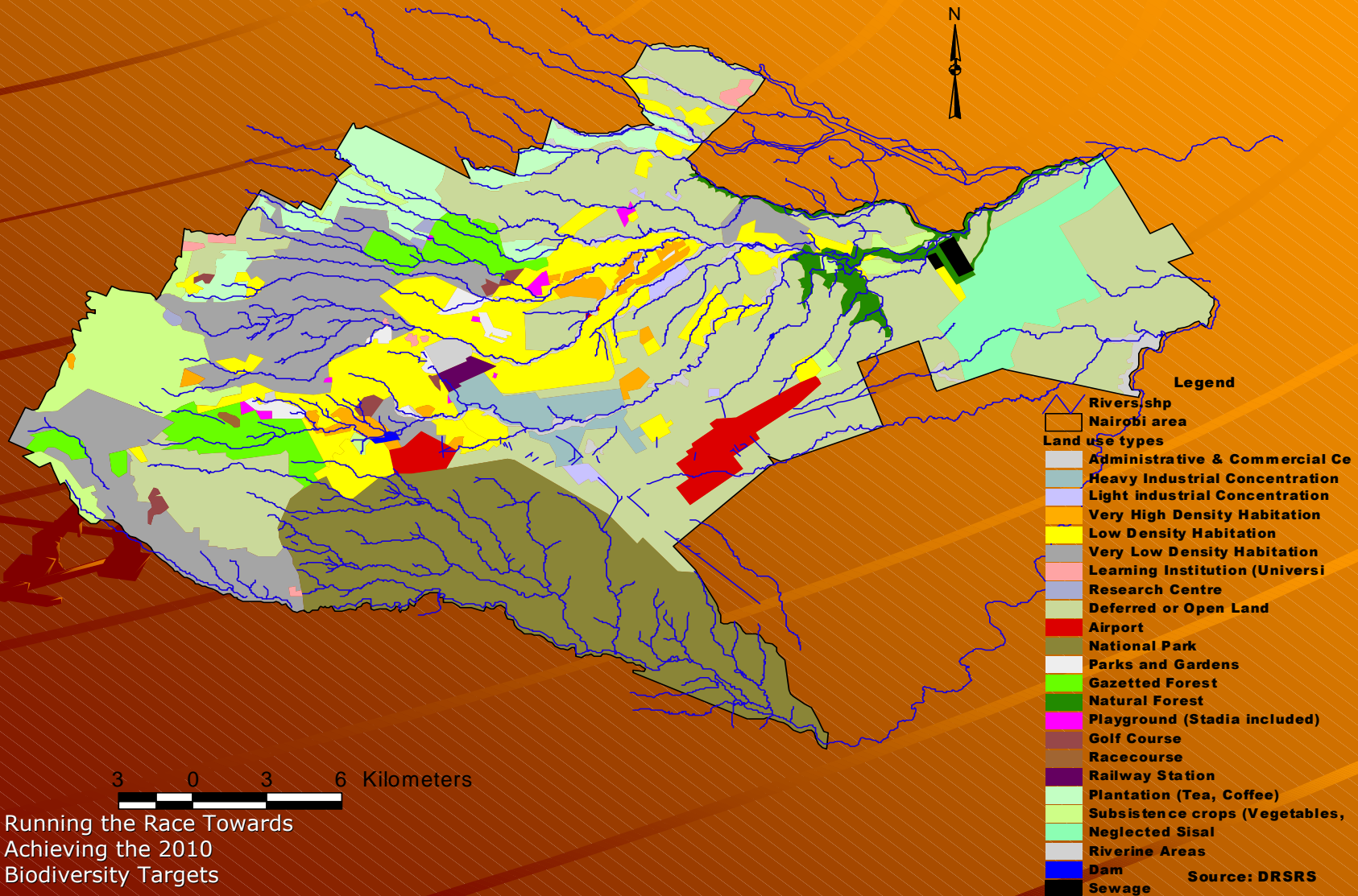
✦ **Population** : 3.3 million people (Estimate)

✦ **Climate** : Tropical

✦ **Parks Coverage** : 177.1 m<sup>2</sup> (25.83)

✦ **Headquarter of UNEP & UN-Habitat**

# Map of City of Nairobi Land Use

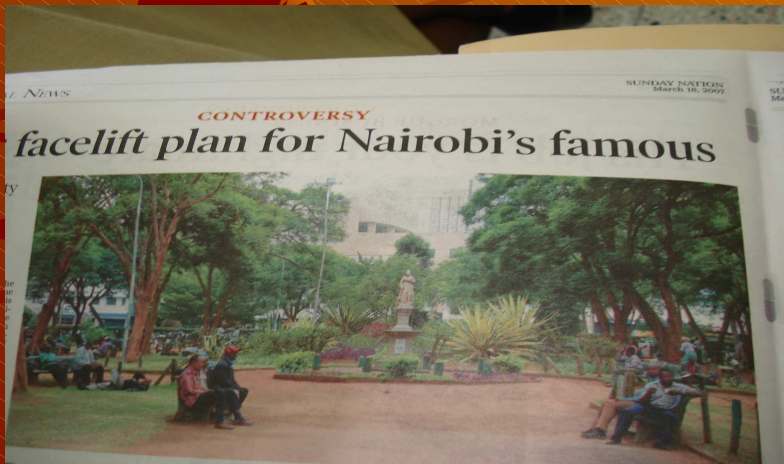


Running the Race Towards  
Achieving the 2010  
Biodiversity Targets

# Nairobi has several Parks, Wetlands & Forests:

<b>Description</b>	<b>Area (m<sup>2</sup>)</b>	<b>% of Nairobi Area</b>
Parks	128.4	18.44
Wetlands	11.8	1.69
Forest cover	36.9	5.7

# Nairobi has several Parks & Open Spaces:



Running the Race Towards  
Achieving the 2010  
Biodiversity Targets

# Parks in Nairobi

## Nairobi National Park

- **The only Game Park within a City in the World**
- **Protected Game reserve**
- **Has variety of fauna, eg Lion, Rhino, Cheater, Buffalo etc**
- **Has over 400 species of birds**
- **Open ecosystem allowing migration of wildlife (Not fenced at southern side)**
- **Acreage 117Km<sup>2</sup>**



# Benefits of Parks & Wetlands

Economic – Parks employ staff for maintenance & upkeep



Running the Race Towards  
Achieving the 2010  
Biodiversity Targets

## **Tourism Values -**

- **Nairobi National Park alone receives 100,000 visitors annually**

## **Educational -**

- **Animal orphanage, Giraffe Centre, City Park**

## **Environmental -**

- **Variety of wild Animals, Carbon sink**
- **Ground Cover to prevent evaporation**
- **Shade against direct sun**
- **Water purification**

# Recreational –



Running the Race Towards  
Achieving the 2010  
Biodiversity Targets

# COUNCIL'S ACHIEVEMENT IN IMPROVING BIODIVERSITY

- ◆ Decentralized workforce to ward level (55 civic wards in Nairobi)
- ◆ Rehabilitated Parks & Opens spaces
- ◆ Planted over 80,000 trees along the main highways in the last 2 years
- ◆ Protected Parks & Open spaces against land grabbing

# COUNCIL'S ACHIEVEMENT IN IMPROVING BIODIVERSITY

- ✦ Involved private sector/friends in parks management (Friends of City Park & City Park Management Board)
- Reclaimed 'grabbed' open space. A church demolished in 2006 in Uhuru Park.
- ✦ Set a special fund for beautification programme
- ✦ Protection of Riverine & wetlands

# CHALLENGES

- ✦ Inadequate funds
- ✦ Air & water pollution for vehicles & Industries



# CHALLENGES

## ✦ Increase in Human Population

- Population is now over 3.3million
- Conversion of parks to housing estates
- Rural-Urban Migration
- Lack of elaborate master plan

# CHALLENGES

## ✦ **Loss of Migration areas for wildlife**

- Fencing of parks
- Farming activities next to parks
- Quarrying & mining
- Urban sprawl

# CHALLENGES

## ✦ **Human – Wildlife conflict**

➤ Poaching for commercial purposes

➤ Lions kill domestic animals

➤ Herders kill lions to protect animals

# CHALLENGES

## Legal Issues

- Nairobi National Park is protected under KWS Act
- Legislations like Forests Act limit Council's Authority
- Inadequate Enforcement of laws

# CHALLENGES

## ✦ Pollution of Nairobi River

### ➤ Burst sewers

### ➤ Dumping of solid waste

### ➤ Oils from garages

### ➤ Industrial effluent



# IMPACTS

✦ **Loss of Recreation space**

✦ **Habitat Degradation**

➤ Air & water pollution

➤ Lack of ground cover

➤ Global warming

# IMPACTS

## ✦ **Death of migration system**

- Reduced number of migrating animals
- Loss of Tourism revenue
- Loss of Wildlife
  - **Poaching**
  - **Encroachment of Parks**
  - **Urbanization**

# WAY FORWARD

## ✦ Partnership

- UN Habitat & Council to turn Jeevanjee Gardens into a modern Recreation Park
- Need to encourage corporate bodies & private companies adopt parks
- Involve Development Partners for capacity and Infrastructure development

# Proposed modern recreation park at Jeevanjee Gardens



# WAY FORWARD

## ✦ Ecosystem Conservation

- Need to initiate community based ecosystem conservation programmes
- Need to encourage community groups participate in integrated city planning

## ✦ Review the existing legislations