

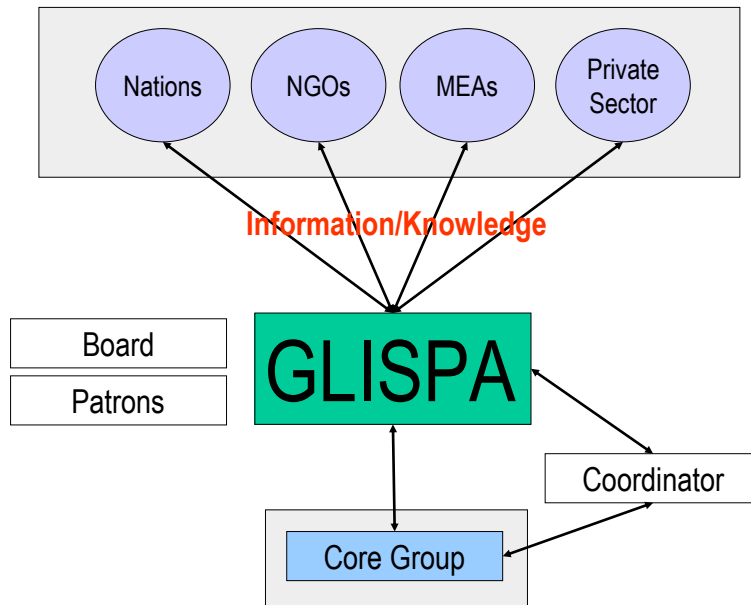
Working Group 3: GLISPA Governance

Significant progress on:

1. Membership Criteria & Process
2. Core Group for Decision-making
3. Operations: staffing & budget
4. Funding core coordination
5. GLISPA Principles

Helpful Input on:

6. Monitoring results
7. Responsibility/Accountability - GLISPA roles & Partner roles
8. Leadership Structure
9. Membership Responsibilities & Benefits



Membership Criteria & Process

Criteria:

- Members make a commitment to implement partnership goals in accordance with values. We communicate with a larger group without them being members (list serve or website).
- Memberships lapse in three years unless progress has been reported.
- Core group decides on membership
- Open to any entity committed to taking significant action on islands. Agencies, orgs and countries but can also include individuals

Functions:

- Members report back on their activities and communicate what their action plans will be.
- All members have a focal point for reporting
- Members need to have a role in implementation and need to report on that implementation.

Core group for Decision Making

Criteria

- Make financial and/or in-kind contributions to operations

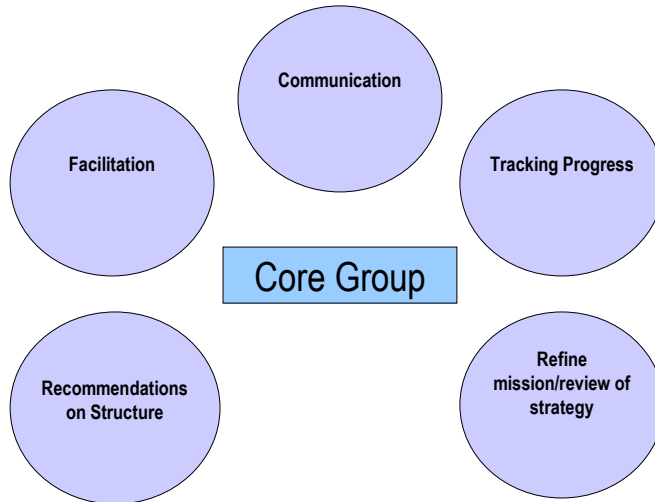
- 'Significant' role in implementation
- Coordination role to play
- Allocate percentage of time, timely review of materials and participation on conference calls and meetings.
- In-kind contributions of a full time staff needed?

Functions

- Facilitating action – connecting network opportunities for exchange, access to information and facilitating commitments for action
- Communication – there should be a lead on the core group. Core group oversees the work of the communication staff. Over seeing branding and high level communications decisions.
- Tracking progress
- Refine Mission and review Strategy
- Leverage support and resources
- Recommendations on structure and membership – Core Group should me to decide terms of reference, rules of engagement and decision making role

Initial GLISPA Core Group

- | | |
|------------------------|--|
| • CBD Secretariat | • Coral Triangle |
| • Italy | • Invasives |
| • IUCN | • Micronesia Challenge |
| • Seychelles | • Palau |
| • TNC | • SPREP |
| • UNEP/WCMC | |
| • Communications | <i>Suggestion: Add more island representatives where action is being taken</i> |
| • Caribbean Initiative | |



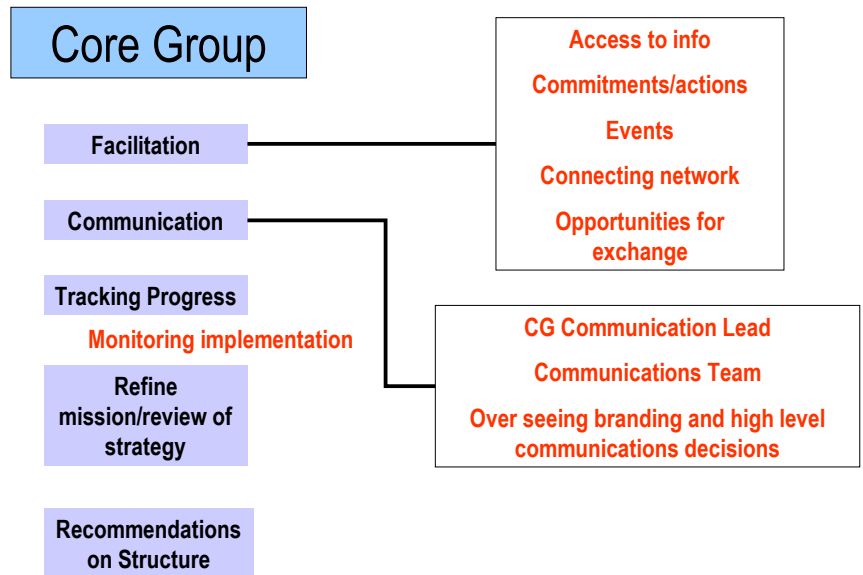
- Meet twice a year face-to-face.
- Evaluate structure again in a few years, even if Core Group could expand with contributions in the meantime
- Is the core group a legal entity? Who bears risk? Need to determine whether there is a legal entity needed/ risk

management

- During next 5 years may institute board high level group /patrons (would include CEOs' GEF)

Comments on representation on core group to be considered in the future:

- ◆ need to keep membership in Core Group flexible and open to those who are ready to participate
- ◆ current criteria keep out small NGO's
- ◆ possibility to include representatives from key projects that are implementing major initiatives
- ◆ committing time when it is needed should be included in the criteria
- ◆ how to account for members who put in much time for specific projects and events but are not on the core group



Staffing and Budget

To date:

- Facilitator/coordinator
- Communications
- Events coordination
- Administration
- Communication materials
- Event costs
- Travel

Needs:

- Facilitator/coordinator
- Communications
- Events coordination
- Administration
- Communication materials
- Event costs
- Travel

In kind and cash contributions needed: \$2 million

Volunteers to secure core coordination support & prepare initial GEF PIF for GLISPA

- Oliver Hillel, CBD Secretariat
- Susi Olmsted, GLISPA
- Stas Burgiel, TNC
- Giorgio Grussu, IUCN/Italy Ministry of Foreign Affairs
- Margarita Astralaga, IUCN
- Kristian Teleki, UNEP/WCMC
- Gerald Miles, TNC