



UNFF/CBD Workshop on Forest Biodiversity and Climate Change for South and South-East Asia

Singapore City, 2 - 5 September 2009

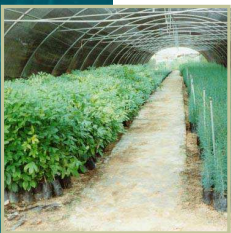
ITTO Thematic Programme on Reducing Deforestation and Forest Degradation and Enhancing of Environmental Services (REDDES)

PRESENTED BY: Ma Hwan Ok, Projects Manager

INTERNATIONAL TROPICAL TIMBER ORGANIZATION (ITTO)



Outline



- Brief introduction to ITTO
- ITTO Guidelines for SFM/Climate Change Mitigation and Adaptation Measures
- ITTO Thematic Programme on REDDES
- Pilot project of REDD + in Indonesia
- Cycle of REDDES



The International Tropical Timber Organization (ITTO)

- an intergovernmental organization established under the auspices of the UNCTAD in 1986
- has a secretariat of 40 people based in Yokohama, Japan
- has 60 member countries
- is governed by the ITTC and associated committees

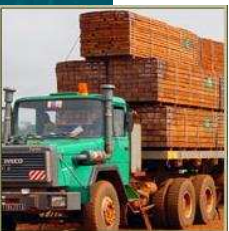




The ITTO mandate

Promoting the conservation and sustainable management, use and trade of tropical forest resources





Producer member countries (33)

Africa	Asia	Latin America
Cameroon	Cambodia	Bolivia
Central African Rep.	Fiji	Brazil
Congo	India	Colombia
Cote d'Ivoire	Indonesia	Ecuador
Dem. Rep. of Congo	Malaysia	Guatemala
Gabon	Myanmar	Guyana
Ghana	Papua New Guinea	Honduras
Liberia	Philippines	Mexico
Nigeria	Thailand	Panama
Togo	Vanuatu	Peru
		Suriname
		Trinidad & Tobago
		Venezuela

To become a party, ratify the International Tropical Timber Agreement (ITTA), 2006

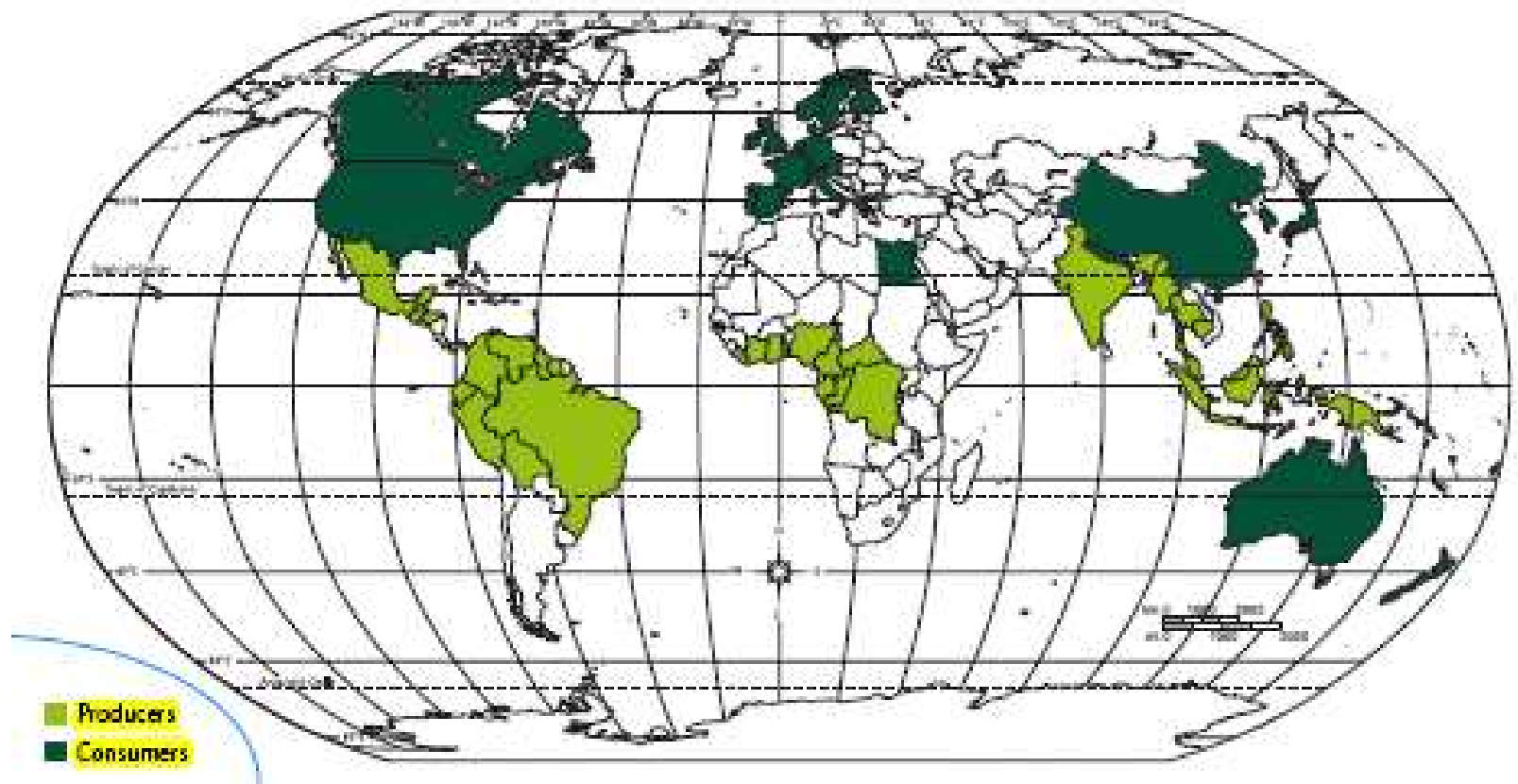


Consumer member countries (27)

Australia	Germany	Norway
Austria	Greece	Poland
Belgium/Lux.	Ireland	Portugal
Canada	Italy	Sweden
China	Japan	Switzerland
Denmark	Korea	UK
Egypt	Nepal	USA
Finland	Netherlands	EU
France	New Zealand	



ITTO members (60)



- ▶ 80% of the world's tropical forests
- ▶ 90% of the world's tropical timber trade ⁷



Donors

Since 1987, funded 750 projects, pre-projects and activities valued at more than US\$300 million

Main donors for project work and other activities:



Japan



Switzerland



United States

ITTO Guidelines for SFM/Climate Change

- Sustainable management of natural tropical forests
- Establishment and sustainable management of planted tropical forests
- Fire management in tropical forests
- Criteria and indicators for sustainable management of natural tropical forests
- ATO/ITTO principles, criteria and indicators for the sustainable management of African natural tropical forests
- Restoration, Management and Rehabilitation of Degraded and Secondary Forests (2002)
- ITTO/IUCN guidelines for the conservation and sustainable use of biodiversity in tropical timber production forests



The background of the slide is a photograph of a lush tropical forest. In the foreground, there is a dense canopy of green trees. Above the forest, a thick layer of white mist or low clouds fills the valley. In the far distance, blue-toned mountain ranges are visible under a hazy sky. A solid red rectangular box is positioned at the top left of the image, containing the text '2010 Plan of ITTO' in white.

2010 Plan of ITTO

International Conference on Conservation of Biodiversity in Transboundary Tropical Forests

- Date: mid May 2010
- Venue: Quito (Loja), Ecuador

On-going Project Intervention in A-P Region

Country	Partners	Title
Cambodia/ Thailand	Forestry Administration / RFD	Management of the Emerald Triangle Protected Forests Complex for Transboundary Biodiversity Conservation between Thailand, Cambodia and Laos
Cambodia	Forestry Administration	Strengthening Capacity of Forest Law Enforcement and Governance in Cambodia
China	Guangdong Forestry Acad	Demonstration of the Management of Secondary Forests in Tropical Regions
	Chinese Acad of Forestry	Tropical Forest Fire Monitoring Management System Based on Satellite Remote Sensing Data in
	Chinese Acad of Forestry	Training in Demonstration and Extension of Restoring Forest Landscapes In Tropics of China
India	Winrock -India	Development of an Integrated Grazing Policy for SFM in India
	Indian Institute of For Man't	Operational Strategy for Sustainable Forestry Development with Community Participation in India

On-going Project Intervention in A-P Region (2)

Country	Partners	Title
Indonesia	Bali Forestry Services	Production of Planting Materials to Support Sustainable Plantation of Bali Indigenous Species through Community Participation
	MoF	Internal Monitoring of SFM Performance at Forest Management Unit Level
	FORDA	Restoring the Ecosystem Functions of the Lake Toba Catchment Area through Community Development
	MoF	Strategy for Developing Plantations Forest: A Conflict Resolution Approach in Indonesia
	FORDA	Promotion of Rehabilitation and Plantation of <i>Gonvstylus</i> spp. (ramin) in Sumatera and Kalimantan
Malaysia	Sarawak Forest Dep	Transboundary Biodiversity Conservation Area: The Pulong Tau National Park, Sarawak State, Malaysia
	Sarawak Forest Dep	Development of Lanjak Entimau Wildlife Sanctuary as a Totally Protected Area, Phase IV (Final Phase)

On-going Project Intervention in A-P Region (3)

Country	Partners	Title
Malaysia	FRIM	Conservation of Biological Diversity through Sustainable Forest Management Practices
	FRIM/APAFRI	Regional Collaboration for Sustainable Use of Forest Genetic Resources in Tropical Asia
	Saba Forest Department	The Establishment of Seed Orchards for Selected Indigenous Tree Species in Sabah, Malaysia
Myanmar	Forest Department	Ex-situ and In-situ Conservation of Teak (<i>Tectona grandis</i> L.F.) to SFM in Myanmar
PNG	National Forest	SFM through Stakeholder Agreements in Traditional Owned Areas of Papua New Guinea
Thailand	RFD/TEI	Contribution to Forest Rehabilitation in Thailand's Areas Affected by Tusnami Disaster
	NP	Monitoring Information System of Tree Resources Outside Forest at the Sub-District Level in Thailand
	RFD	Implementation of C & I for Sustainable Management of Planted and Community Forests

ITTO THEMATIC PROGRAMME



REDDES

**REDUCING DEFORESTATION AND FOREST
DEGRADATION AND ENHANCING
ENVIRONMENTAL SERVICES IN TROPICAL FORESTS**



Core Problem to Be Addressed:

Prevention and reduction of deforestation
and forest degradation



Key factors:

Deforestation – extra sectoral drivers

Degradation – unsustainable forest utilization

Undervaluation of forest environmental services



REDDES

REDUCING DEFORESTATION AND FOREST DEGRADATION AND ENHANCING ENVIRONMENTAL SERVICES IN TROPICAL FORESTS



General objective: To **reduce deforestation and forest degradation, enhance environmental services** and help **improve** forest dependant **livelihoods** through sustainable management of tropical forests, forest restoration and other related activities.

Specific objective : To **strengthen the capacity** of ITTO developing member countries and their stakeholders to:

- reduce unplanned deforestation
- reduce forest degradation
- maintain and enhance climate change mitigation and other environmental services of tropical forests; and
- contribute to the social and economic sustainability of forest-dependent communities by increasing forest values through forest restoration and rehabilitation as well as payments for forest-based environmental services .

REDDES

REDUCING DEFORESTATION AND FOREST DEGRADATION AND ENHANCING ENVIRONMENTAL SERVICES IN TROPICAL FORESTS

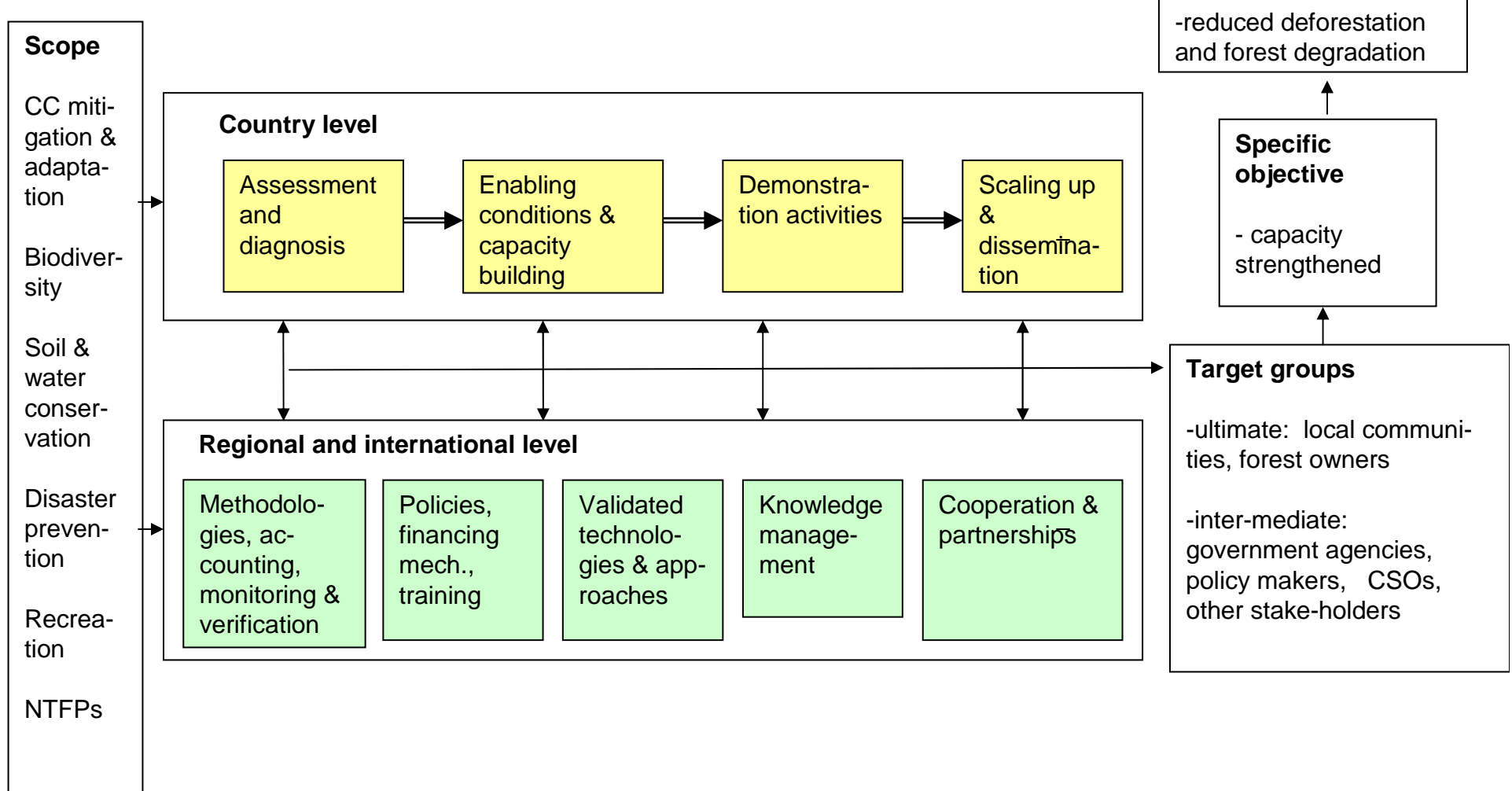


. Expected outcomes:



- **Reduced deforestation and forest degradation & increased area of forest under sustainable management** in tropical timber producing forest
- **Improved livelihoods** for forest dwellers and other stakeholders directly involved in the supply of environmental services through the sustainable management of tropical forests
- Improved **resilience of tropical forest ecosystems and forest-dependent communities**
- Improved **capacities to develop and implement policies** and incentive mechanisms to promote environmental services through sustainable forest management
- Improved practices to promote **community involvement** in the supply of environmental services from SFM

REDDES Programme Strategy





Added Value of REDDES

- **Complementarity** to other initiatives in REDD
- **Comprehensive approach** covering all environmental services
- Focus on **SFM** in reducing deforestation and degradation, particularly the “**second D**”
- In capacity building the focus on **FMU/local implementation** to deliver climate and other environmental benefits (upfront support)
- Focus on **demonstration** (ref. Bali Action Plan)
- Country experience on **payment schemes for ES**
- **Geographic coverage** (incl. countries not covered by other initiatives)
- ITTO’s **comparative advantage**: more than 750 projects, guidelines, training, etc.

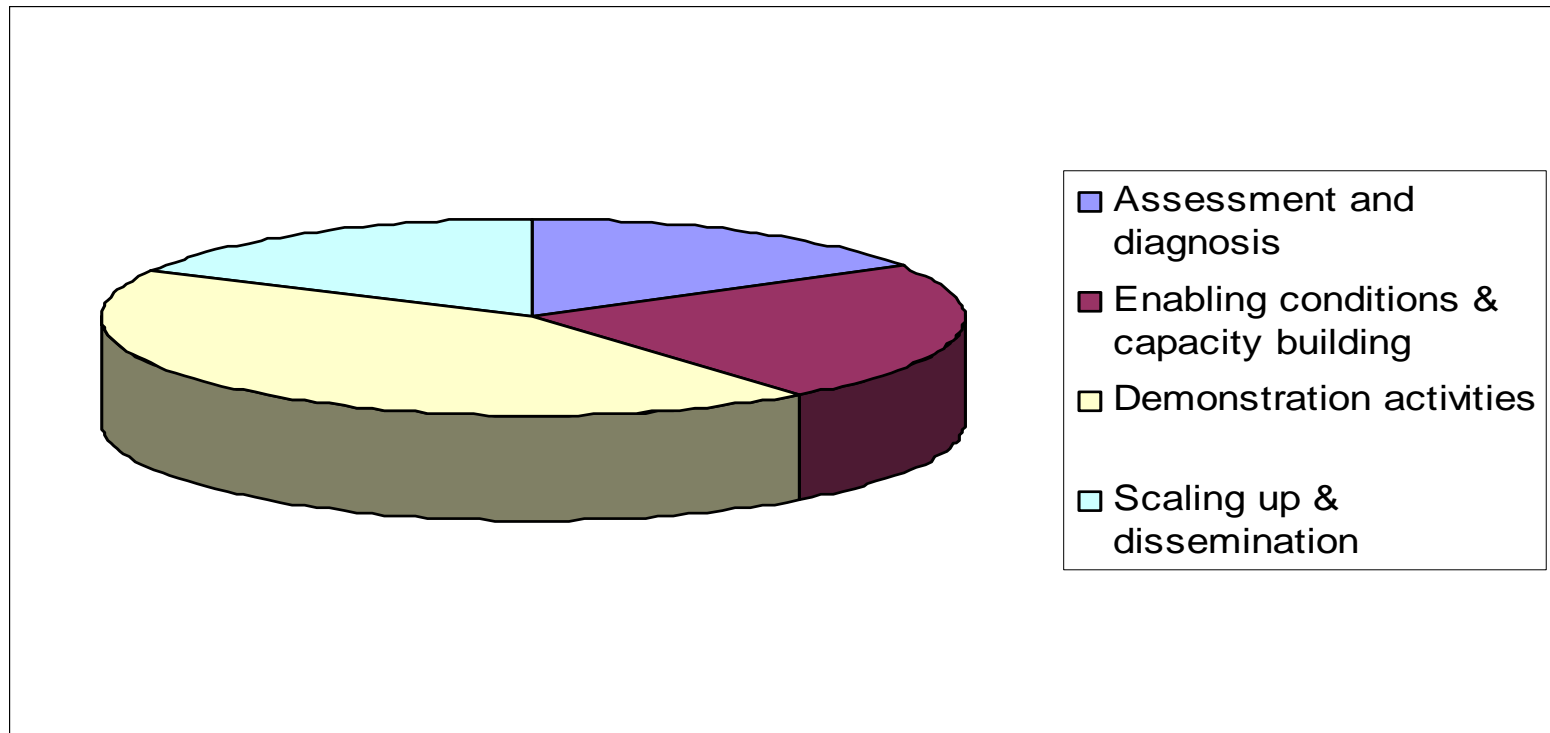
Partnerships in Support to Countries

- CPF Strategic Framework on F&CC
- UN-REDD
- FCPF and FIP
- Other initiatives

- Coordinated pilot country approaches
- Harnessing synergies
- SFM, restoration, rehabilitation of degraded forests

COUNTRY LEADERSHIP

ITTO REDDES Budget Breakdown



Total budget: USD 18 million (2009-2011)

Already received: US\$ 3.8 million from Gov't of Norway

Expected contributions: Gov'ts of Japan, Swiss, USA and others

Demonstration REDD + Activities by ITTO

**Location: Meru Betiri National Park,
East Java, Indonesia**

**Partners: Indonesian Ministry of Forestry,
FORDA, LATIN
7&i Holdings (7 Eleven, Japan)**

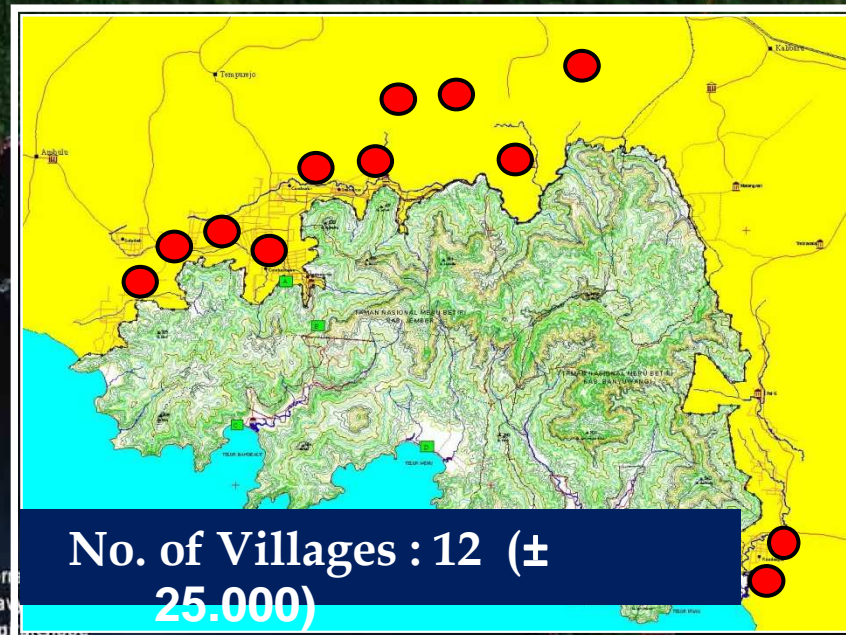
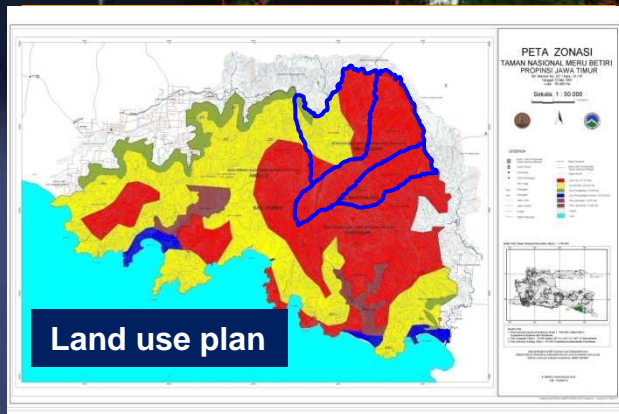


Overview of Project Site Meru Betiri NP, Java, Indonesia



Meru Betiri NP, Java, Indonesia

TN. MERUBETIRI



© 2009 Terra
DAA, U.S. Nav
Image © 2009 Dig
Image © 2009 GeoEye
8°27'39.95" S 113°47'00.15" E

Ketinggian mata 26.66 m

Illegal Activities in Meru Betiri NP



Rotan



Bambu



Penyu & Telur



Primata



Jukung



Kayu Pertukangan



Burung



MBNP Project Objectives

- I. To improve the **livelihoods of local communities** living inside and in the surrounding area of Meru Betiri National Park (MBNP) through participation in avoiding deforestation, degradation and biodiversity loss
- II. To develop a **credible measurable, reportable and verifiable (MRV) system** for monitoring emission reductions from deforestation and forest degradation and enhancement of forest carbon stocks in MBNP.

Meru Betiri National Park Project: Challenges

- The location captured the real pressure of economic development, however there are potential improvement for communities development as well as enhancing carbon stock and reducing emissions
- Need to improve communities awareness and capacity building
- Challenge for developing technical and institutional infrastructures for building MRV system



REDDES related Projects Development (Pipeline)

30 June 2009: Deadline for receipt of proposals

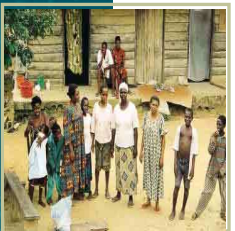
Country	Partner	Project Title
Cambodia	Forestry Administration	Reducing Emission from Deforestation and Degradation (REDD) in Cambodia
Indonesia	Lembaga Ekolabel Indonesia (LEI)	Enhancing ES through Development of Carbon Certification System in Indonesia
Indonesia	Regional Research Center of South Sumatra, FORDA, MoF	REDD in Peat land in South Sumatra through Enhancement of Conservation and Restoration
Indonesia	DG of Forest Production Management, MoF	Enhancing Forest Carbon Stocks through SFM Initiatives in Indonesia

Call for Proposals

REDDES CYCLE CALENDAR FOR AUTUMN 2009

Date	Action
30 September 2009	Deadline for receipt of proposals (project, pre-project or activity)
1 – 12 October 2009	Screening/pre-appraisal of proposals by the ITTO Secretariat
20 October 2009	Deadline for receipt of comments from Thematic Programme Advisory Committee members
30 October 2009	Decision of the Executive Director and allocation of funds
4 November 2009	All funded proposals (project, pre-project and activity) are posted on the website

The process is expected to take max. 6 months



Thank you for your attention!

<http://www.itto.or.jp>

ma@itto.or.jp