



---

# **IFAD/GEF Project on Rehabilitation and Sustainable Use of Peatland Forests in Southeast Asia**

8<sup>th</sup> Meeting of Ministerial Steering Committee on Transboundary  
Haze Pollution

19 August 2009, Singapore

# Transboundary Haze: Highlight of Activities

---

## ASEAN Agreement on Transboundary Haze Pollution

- ASEAN Agreement on Transboundary Haze Pollution (Haze Agreement) was **signed in June 2002** and **entered into force in November 2003**
- **Objectives:**
  - (i) to **prevent** land and forest fires through better management policies and enforcement
  - (ii) to establish operational mechanisms to **monitor** land and forest fires
  - (iii) to strengthen regional land and forest **fire-fighting** capability and other **mitigating** measures



- 
- ASEAN Peatland Management Initiative (APMI)
  - ASEAN Peatland Management Strategy (APMS)
  - **IFAD/GEF Project on Rehabilitation and Sustainable Use of Peatland Forests in Southeast Asia**
    - Global Environmental Facility Grant of US\$4.3 million
    - Co-financing of US\$10.2 million
    - Four years commencing July 2009
    - International Fund for Agricultural Development (IFAD) as implementing agency
    - ASEAN Secretariat as executing agency

# Project Development (May 2005 – May 2009)



1<sup>st</sup> PPPWG Meeting, KL (Sep'05)



2<sup>nd</sup> PPPWG Meeting, Pekanbaru (Feb'06)



3<sup>rd</sup> PPPWG Meeting, Hanoi (May'06)



4<sup>th</sup> PPPWG Meeting, KL (Feb'08)



5<sup>th</sup> PPPWG Meeting, Hatyai (May'09)

# Project Components

---

- Indonesia
- Malaysia
- Philippines
- Viet Nam
- Regional
  - Regional activities
  - Coordination and technical support



---

# Highlights of Key Project Activities

# Indonesia

---

- National – policy support and capacity building
- Focus on integrated planning, community and plantation sector involvement
- Pilot sites:
  - Kampar District, Riau Province – **440,947 ha**
  - Siak District, Riau Province – **75,000 ha**
- Demo sites:
  - Central Kalimantan Province (ex Mega Rice Project) – **1,000,000 ha**
  - Lake Sentarum, West Kalimantan Province – **130 ha**
  - Rokan Hilir District, Riau Province – **87.57 ha**



Riau, Sumatera



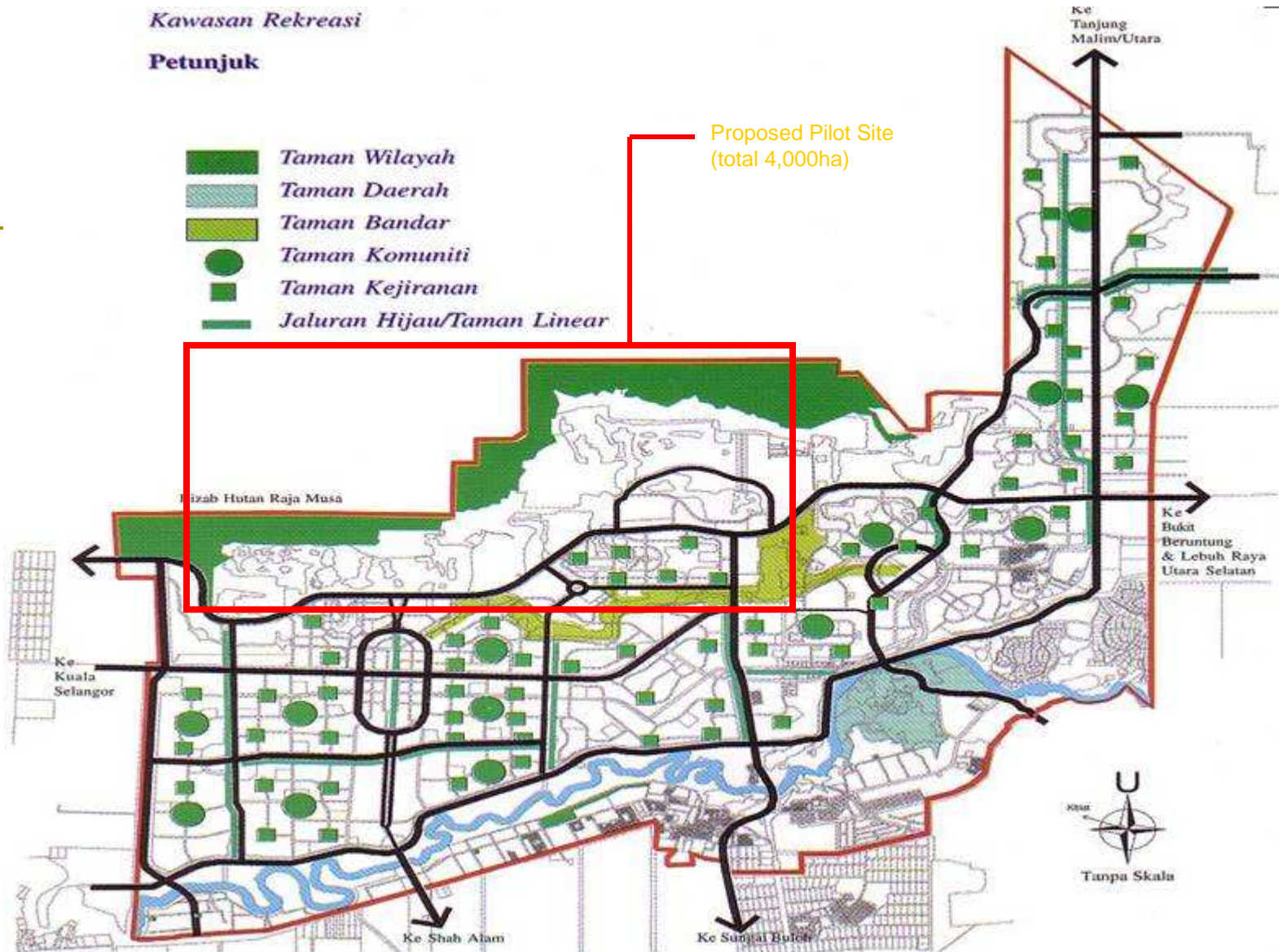
Lake Sentarum, West Kalimantan



# Malaysia

- ❑ National: policy support and capacity building, sharing experience and lessons learned
- ❑ Pilot area: North Selangor Peat Swamp Forest – **4,000 ha**
- ❑ Demonstrating rehabilitation through partnership with private sector





**Map 2. Map showing proposed pilot area**

# Philippines

- Pilot site:
  - Leyte Sab-a Basin, Visayas – **1,740 ha**
- Caimpugan Peatlands, Agusan Marsh, Mindanao – est. 1,000 ha – target for pilot activities



# Viet Nam

---

- ❑ National: Policy support, public awareness, and capacity building
- ❑ Pilot Area:
  - U Minh Thuong National Park - **21,000 ha**
    - ❑ Core Zone: 8,509 ha
    - ❑ Buffer Zone: 13,292 ha



# Key Regional Activities

---

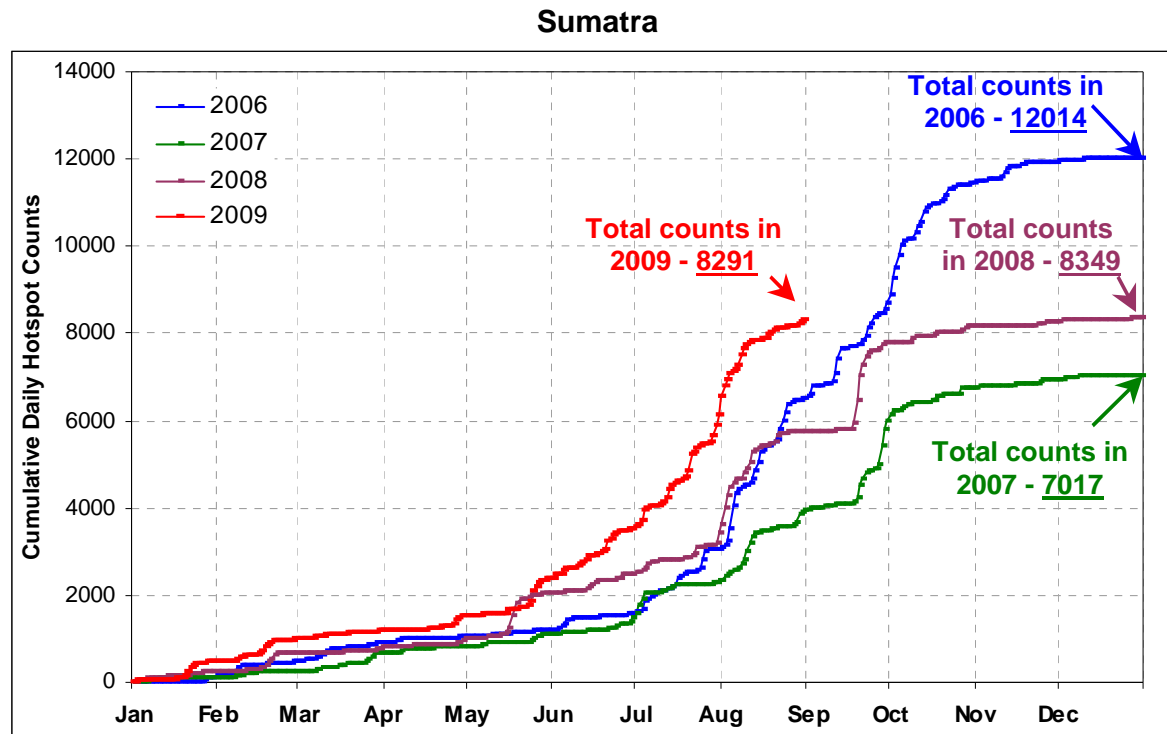
- **Capacity for implementation of APMS enhanced**
  - Support and promote APMS and NAPs
  - capacity building and awareness
  - resource mobilisation mechanisms
  - Regional technical support and country guidance
- **Regional mechanisms for promoting sustainable peatland management**
  - regional peat fires prediction and monitoring
  - Biodiversity conservation priority development
  - Studies on carbon storage and climate vulnerability
  - Guidelines for integrated management of peatlands
- **Regional Network of demonstration sites**
- **Guidelines for responsible use of peatlands for oil palm and forest plantations**

## MONTHLY UPDATE OF HOTSPOT COUNTS (1<sup>st</sup> Jan – 31<sup>st</sup> August 2009)

The statistical counts of hotspots detected in the southern ASEAN region (Indonesia, Malaysia and Thailand) for the period 2006 to 2009 (up to 31<sup>st</sup> August) are depicted in the following charts. The counts are based on the hotspots detected by the NOAA-18 and NOAA-19<sup>1</sup> Satellites.

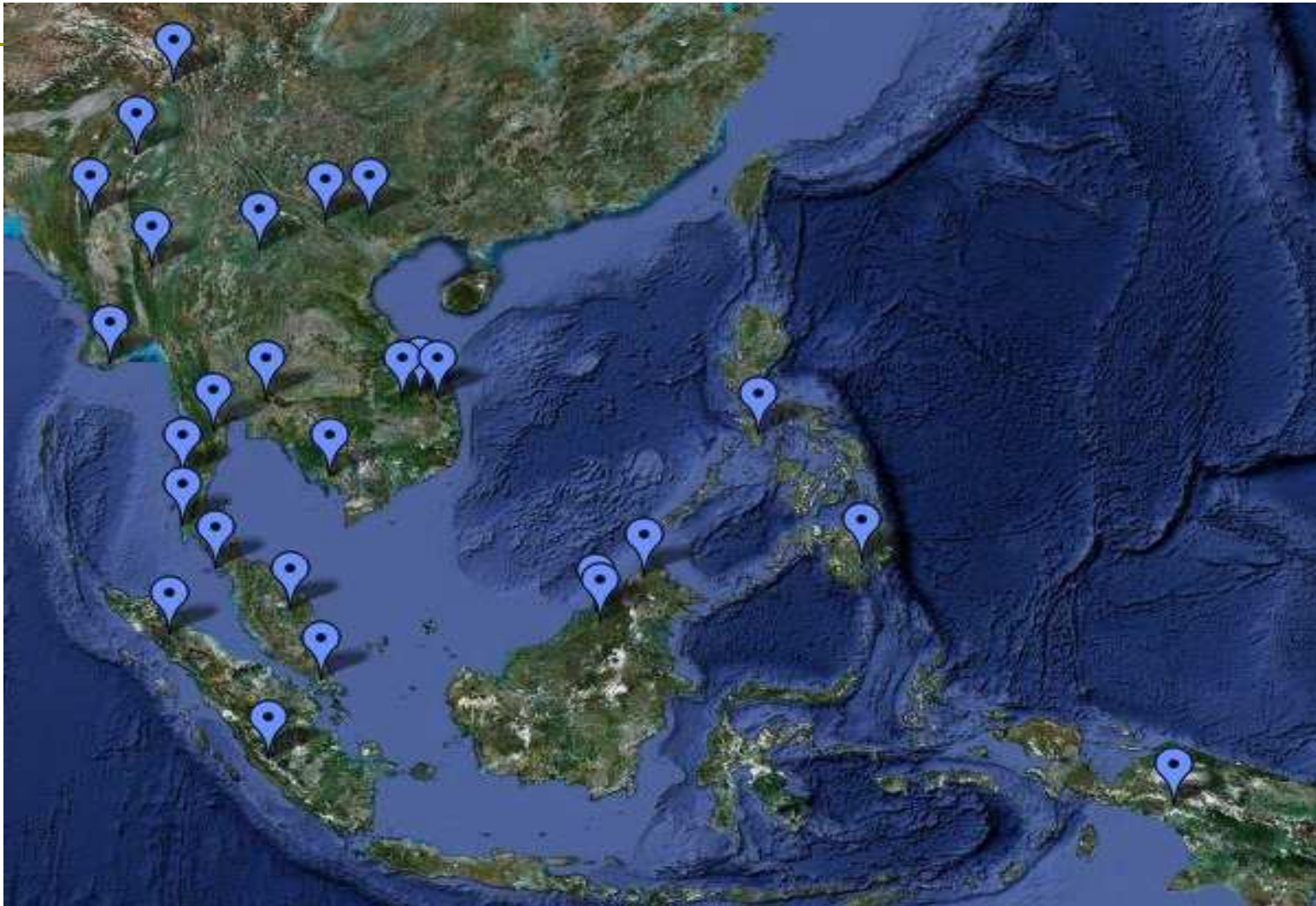
### A. INDONESIA

Cumulative daily hotspot count charts for fire-prone provinces in Sumatra (Riau, Jambi, West Sumatra and South Sumatra)



**Fig A1** Cumulative daily hotspot counts of the 4 fire-prone provinces of Sumatra in 2009, 2008, 2007 and 2006.

# Nature Conservation & Biodiversity: Highlight of Activities



**Map of ASEAN Heritage Parks**

# Nature Conservation & Biodiversity: Highlight of Activities

---

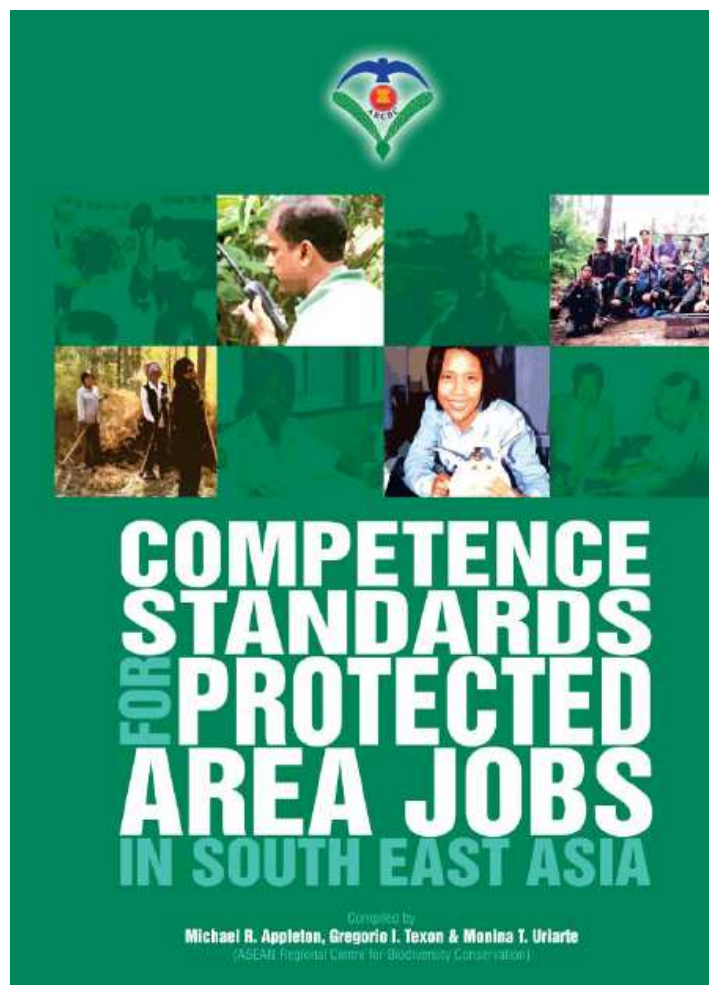
## **ASEAN Heritage Parks Programme:**

- (i) Capacity Development
- (ii) Information Sharing Network
- (iii) Technical Exchange Programme
- (iv) First in Line for Available International Funding
- (v) Promotion of Tourism
- (vi) Participation in Joint Research Programme
- (vii) Biannual Conference of Managers
- (viii) Management Improvement Programme



# Nature Conservation & Biodiversity: Highlight of Activities

## Competence Standards for Protected Area Jobs in South East Asia



- Consists of recommendations for the skills and knowledge ideally required for 24 key protected area jobs, divided into 17 technical categories and five levels.
- Developed as a non-prescriptive tool to assist PA management authorities, training and education organisations and conservation projects to improve HRD, staff performance and training.
- The publication can be

# Nature Conservation & Biodiversity: Highlight of Activities

---

## 17 Technical Categories

General Personal and Work Skills  
Financial and Physical Resources Management  
Human Resources Management  
Staff Development and Training  
Communication  
Technology and Information  
Project Development and Management  
Field Craft  
Natural Resources Assessment  
Conservation Management of Ecosystems, Habitats and Species  
Socio-Economic and Cultural Assessment  
Sustainable Development and Communities  
Protected Areas Policy, Planning and Management  
Site Management  
Enforcement  
Recreation and Tourism  
Awareness Education and Public Relations



# Nature Conservation & Biodiversity: Highlight of Activities

## 5 Occupational Levels

| Level and general responsibilities  | Type of work  | Management responsibility (direction, management, supervision, decision making allocation of resources)   | Equivalent (but not required) educational level | Typical protected area job at this level   |
|---|---|---|---|--|
| <b>Level 5 Directorial</b><br>Strategic and programmatic responsibilities.  | <ul style="list-style-type: none"> <li>• Outward looking, dealing with the organisation in its institutional, financial and policy environments.</li> <li>• Strategic application of complex techniques and approaches across a wide, unpredictable range of contexts.</li> </ul> | <ul style="list-style-type: none"> <li>• Strategic planning, direction, management, and evaluation of complex programmes and plans.</li> <li>• Working with policy and decision makers.</li> <li>• Extensive authority for decision-making and direction.</li> <li>• Overall responsibility for budgets and resources.</li> </ul> | Masters or Bachelors Degree                     | <ul style="list-style-type: none"> <li>• Head of a complex/high profile park, park complex or national/provincial protected areas agency</li> </ul>  |
| <b>Level 4 Managerial, Higher Technical</b><br>Project, divisional management and/or high-level technical responsibilities. | <ul style="list-style-type: none"> <li>• Integrating flows of activities into projects and programmes.</li> <li>• Complex and technical work in a wide and unpredictable range of contexts.</li> </ul>  | <ul style="list-style-type: none"> <li>• Management of divisions, teams and work groups.</li> <li>• Development and management of projects.</li> <li>• Decision-making within plan frameworks.</li> <li>• Developing and monitoring project or departmental budgets and resources.</li> </ul>                                     | Bachelors Degree or College Diploma.            | <ul style="list-style-type: none"> <li>• Head of a protected area.</li> <li>• Deputy head or section head of a large, complex and/or high profile protected area.</li> <li>• Leader of technical section.</li> </ul> |
| <b>Level 3 Technical/Supervisory</b><br>Supervisory/ mid-level technical responsibilities.                                  | <ul style="list-style-type: none"> <li>• Managing the flow of specific activities.</li> <li>• Complex, often technical and non-routine work, performed in a variety of contexts and requiring detailed technical skills.</li> </ul>   | <ul style="list-style-type: none"> <li>• Supervision and leadership of staff and work teams.</li> <li>• Planning and supervision of tasks and assignments.</li> <li>• Accountable for resources within clearly defined operational plans.</li> </ul>  | College Diploma/ High School.                   | <ul style="list-style-type: none"> <li>• Head of a protected area subunit or section.</li> <li>• Head of nature reserve/ sanctuary.</li> <li>• Senior/supervising member of sections or work teams.</li> </ul>       |
| <b>Level 2 Skilled Worker</b><br>Technical responsibilities with some team leadership.                                      | <ul style="list-style-type: none"> <li>• Specific but not always predictable, work, sometimes requiring technical and analytical skills.</li> </ul>   | <ul style="list-style-type: none"> <li>• Completing specific tasks and assignments.</li> <li>• Decision making limited to ensuring completion of specified technical tasks.</li> <li>• Monitoring and reporting task related resource use.</li> </ul>   | High school or Intermediate School.             | <ul style="list-style-type: none"> <li>• Park Ranger.</li> <li>• Established and experienced worker/team leader.</li> <li>• Experienced local community member.</li> </ul>   |
| <b>Level 1 Labourer</b><br>Non-technical responsibilities.  | <ul style="list-style-type: none"> <li>• Predominantly routine, prescribed and predictable work.</li> </ul>   | <ul style="list-style-type: none"> <li>• No supervisory responsibilities.</li> <li>• Limited decision making and accountability.</li> </ul>   | Intermediate / Elementary school.               | <ul style="list-style-type: none"> <li>• Labourer, member of work team.</li> <li>• Community helper.</li> </ul>  |

# Heart of Borneo (HoB) Initiative

- ▣ **Mission:** Realizing sustainable conservation and development in the critical eco-region of the Heart of Borneo, the jurisdiction area of the three countries: Brunei Darussalam, Indonesia and Malaysia.




**DECLARATION ON THE HEART OF BORNEO INITIATIVE**  
*Three Countries, One Conservation Vision*

We, the Governments of Brunei Darussalam, Indonesia and Malaysia, recognizing the importance of the Island of Borneo as a life support system, hereby declare that:

- With one conservation vision and with a view to promote people's welfare, we will cooperate in ensuring the effective management of forest resources and conservation of a network of protected areas, productive forests and other sustainable land-uses within an area which the three respective countries will designate as the "Heart of Borneo (HoB)", thereby maintaining Bornean natural heritage for the benefit of present and future generations, with full respect to each country's sovereignty and territorial boundaries, and also without prejudice to the ongoing negotiations on land boundary demarcation.
- The HoB Initiative is a voluntary trans-boundary cooperation of the three countries combining the stakeholders' interests, based on local wisdom, acknowledgement of and respect for laws, regulations and policies in the respective countries and taking into consideration relevant multilateral environmental agreements, as well as existing regional and bilateral agreements / arrangements.
- We are willing to cooperate based on sustainable development principles through research and development, sustainable use, protection, education and training, fundraising, as well as other activities that are relevant to trans-boundary management, conservation and development within the areas of the HoB.

To support this Declaration, we, the three countries will prepare our respective project documents incorporating the strategic and operational plans, which will form the basis for the development of our road map towards realizing the vision of the HoB Initiative.

Done at Bali, Indonesia on the twelfth day of February, two thousand and seven in three original copies.

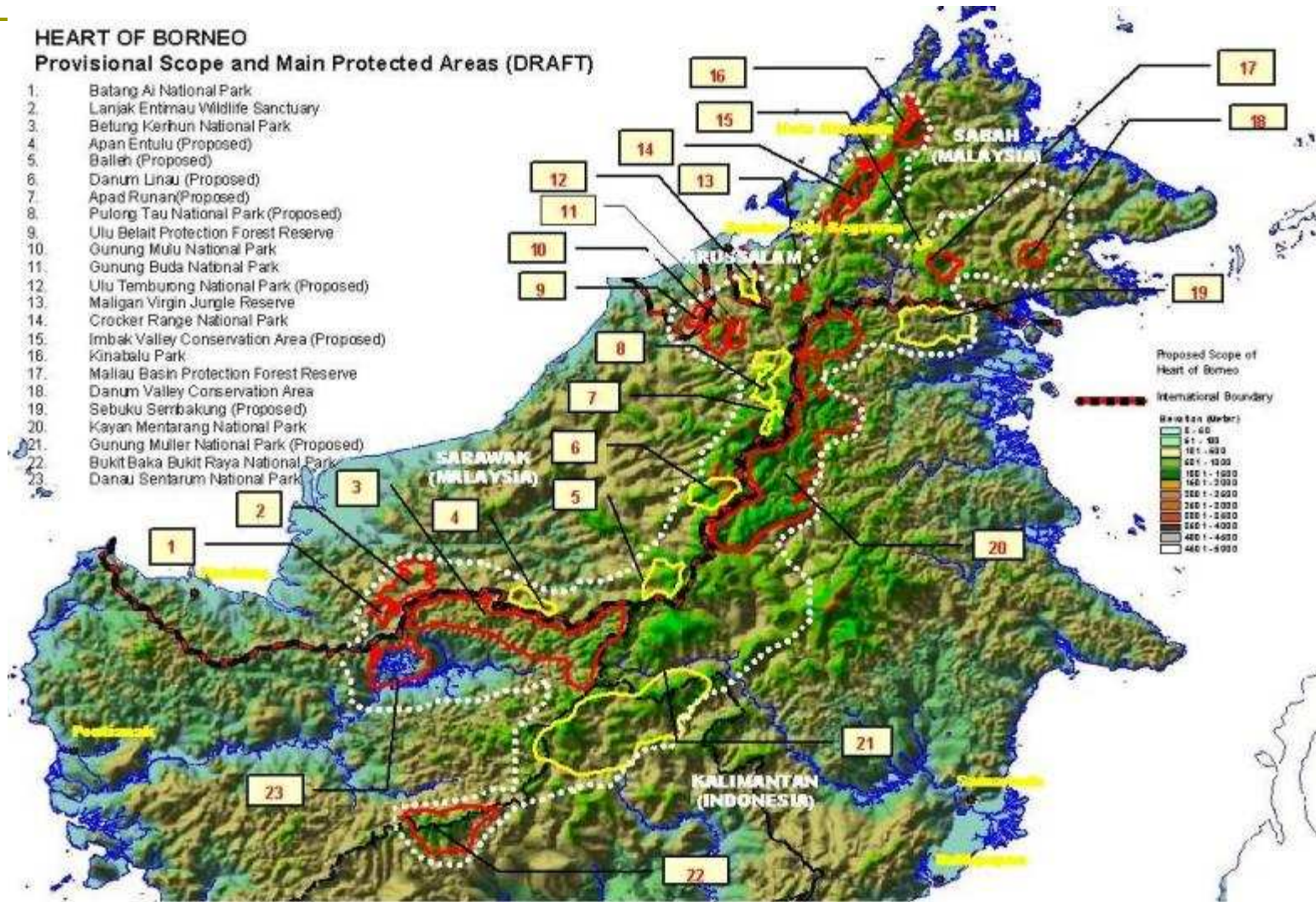
|   |   |  |
|---|---|--|
| <p>For the Government of<br/>His Majesty the Sultan<br/>and Yang Di-Pertuan of<br/>Brunei Darussalam</p>  <p>H.E. Pehin Dato Dr.<br/>Awang Haji Ahmad bin<br/>Haji Jumat<br/>Minister of Industry and<br/>Primary Resources,<br/>Brunei Darussalam</p> | <p>For the Government<br/>of the Republic of<br/>Indonesia</p>  <p>H.E. Mr. M. S. Kaban<br/>Minister of Forestry,<br/>Republic of Indonesia</p> | <p>For the Government of<br/>Malaysia</p>  <p>H.E. Dato' Seri Azmi bin<br/>Khalid<br/>Minister of Natural<br/>Resources and Environment,<br/>Malaysia</p> |
|---|---|--|

# HoB Areas

## HEART OF BORNEO

### Provisional Scope and Main Protected Areas (DRAFT)

1. Batang Ai National Park
2. Lanjak Entimau Wildlife Sanctuary
3. Betung Keruh National Park
4. Apan Entulu (Proposed)
5. Balleh (Proposed)
6. Danum Linau (Proposed)
7. Apad Runan (Proposed)
8. Pulong Tau National Park (Proposed)
9. Ulu Belait Protection Forest Reserve
10. Gunung Mulu National Park
11. Gunung Buda National Park
12. Ulu Tembuong National Park (Proposed)
13. Maligan Virgin Jungle Reserve
14. Crocker Range National Park
15. Imbak Valley Conservation Area (Proposed)
16. Kinabalu Park
17. Maliau Basin Protection Forest Reserve
18. Danum Valley Conservation Area
19. Sebuku Sembakung (Proposed)
20. Kayan Mentarang National Park
21. Gunung Muller National Park (Proposed)
22. Bukit Baka Bukit Raya National Park
23. Danau Sentarum National Park



# Coastal & Marine Environment: Highlight of Activities

## Coral Triangle Initiative (CTI)



- 6 countries: Indonesia, Malaysia, Papua New Guinea, Philippines, the Solomon Islands & Timor Leste
- Two major criteria to define the boundaries of the CT regions are coral and reef fish diversity.



*Thank you*