

PHILIPPINES PROTECTED AREA SYSTEM

Recipient Expression of Interest

Philippines Department of Environment and Natural Resources (DENR) Protected Areas and Wildlife Bureau (PAWB) National Integrated Protected Areas System (NIPAS)

COUNTRY	<i>Philippines</i>
REQUEST	\$21,700,000
DURATION	<p><i>Five (5) years</i> [Year 0: \$200,000 proposal development grant] Year 1: \$2,150,000 Year 2: \$4,900,000 Year 3: \$5,750,000 Year 4: \$4,900,000 Year 5: \$3,800,000 Total: \$21,700,000</p>
ELEMENTS	<p><i>Please headline the main elements to be supported. If Project-scale Expressions of Interest have been submitted to LifeWeb, please indicate and annex them here as elements to this broader System-scale Expression of Interest.</i></p> <p>This Expression of Interest seeks support for the Philippine National Protected Areas and Wildlife Bureau (PAWB) to build upon existing gap and strategy assessments to complete a comprehensive strategic plan for the national protected area system, and to make significant inroads towards implementing that strategic plan. The gap assessment and strategic plan will guide the future growth and institutional development of both the national protected areas agency (Protected Areas and Wildlife Bureau - PAWB) and its component protected areas, thereby advancing the security of the manifold economic and social benefits that the national protected areas system provides to humanity.</p> <p>The CBD Programme of Work on Protected Areas (POWPA) essentially provides the following framework for advancing the effectiveness of a national system of protected areas. A national system and its component protected area sites should strive to be:</p> <ol style="list-style-type: none"> Ecologically representative: Broadly, the national PA system covers adequate proportions of the nation's (and neighbouring trans-



boundaries) that cover various biodiversity and habitat types;

2. **Effectively managed:** The management capacity of institutions at the national agency and local protected area level is sufficient for the protected areas system to meet its conservation and other objectives, and to yield its social, economic, climate management and biodiversity benefits for society.
3. **Supported by key stakeholders and communities:** The national population understands and supports the mission of the national protected areas system and its component sites. Communities surrounding and within individual protected areas understand the value of those protected areas, are engaged in their management, and perceive themselves to have adequate access, benefits sharing and participation in the protected areas.
4. **Sustainably funded:** The economic, social and climate benefits of the National Protected Areas system are understood and the national protected areas agency and system has adequate, diverse sustainable funding to meet its objectives and to secure those benefits.
5. **Managed for climate adaptation and mitigation:** Since the original POWPA was ratified in 2004, the global protected areas community has come to recognize that the above four themes should be implemented so that they maximize the value of individual protected areas and systems of protected areas in sequestering and storing carbon and in supporting the adaptation of communities and economies to the likely impact of climate change through enhancing the resiliency of ecosystem services provided by protected habitats. Thus, a thorough understanding of the inter-relationship between biodiversity protection and climate change adaptation and mitigation should be imbued into any protected areas system planning and management program.

According to national commitments to the POWPA, each national protected areas agency should know the status of each of these four elements and have a plan to strengthen each of them to an adequate level. Similarly, following the Bali and Copenhagen Climate conventions, it is understood

	<p>that each nation should be developing national climate change adaptation plans, which should include the role of the national protected areas system in climate change mitigation and adaptation.</p> <p>The purpose of this proposal is to seek funds to:</p> <ol style="list-style-type: none"> 1. Complete the establishment of the baseline for each of these five program elements, and to 2. Develop a strategic action plan for the Philippines National Protected Areas System to strengthen each of them, and to 3. Achieve implementation of key milestones of the strategic action plan. <p><i>In essence, this concept note proposes to fulfil the ambitions for the POWPA in the Philippines with associated carbon sequestration, biodiversity conservation, climate adaptation, cultural and economic benefits for the people of the Philippines and globally.</i></p>
--	---

1. FINANCIAL GAP

Budget Required	\$58,076,665	<p>Year 1- \$11,615,333 Year 2- \$11,615,333 Year 3- \$11,615,333 Year 4- \$11,615,333 Year 5- \$11,615,333 <u>TOTAL = \$58,076,665 – total optimal budget</u></p> <p>National – National Integrated Protected Areas System (NIPAS)</p>				
Current Budget	\$25,895,145	<p>Year 1- \$5,179,029 Year 2- \$5,179,029 Year 3- \$5,179,029 Year 4- \$5,179,029 Year 5- \$5,179,029 <u>TOTAL = \$25,895,145</u></p> <p>\$5,179,029 annually from PA revenues (e.g. user fees), Philippine Government & multilaterals (i.e. UNDP, etc.)</p>				
Total Funding Gap	\$32,181,520	<table border="1" style="width: 100%;"> <tr> <td style="background-color: #e0e0e0;">To be met by domestic sources:</td> <td></td> </tr> <tr> <td style="background-color: #e0e0e0;">Requested from international donors: Total = \$10,481,520 broken down as follows:</td> <td></td> </tr> </table>	To be met by domestic sources:		Requested from international donors: Total = \$10,481,520 broken down as follows:	
To be met by domestic sources:						
Requested from international donors: Total = \$10,481,520 broken down as follows:						



Convention on
Biological Diversity



		\$4,171,090 (Rare Foundation) \$6,310,430 from other Foreign Assisted Projects funded by ADB, UNDP and GTZ i.e. Integrated Coastal Resources Management Project (ADB); Biodiversity Partnership Program (UNDP); and GTZ (application in progress for climate resilience and adaptive capacity for fisheries & marine biodiversity in municipal MPAs)
		\$21,700,000.00 (budget request to Lifeweb)

- * Please indicate amounts on an annual basis for 1 to 5 years. To extent possible, indicate recurring and non-recurring expenses. You are welcome to include additional tables and/or annex relevant supporting documents. To the extent possible, please draw directly from sustainable financial plans completed as per [Activity 3.4](#), as well as other protected area system planning inputs that identify financial implications for ecological gaps, management effectiveness and capacity development and other plan listed in question 3 below, as per the CBD [Programme of Work on Protected Areas](#).

2. ECOLOGICAL PRIORITIES

Please annex map(s) and/or list of the existing protected area system as well as the priority areas to be created for greater ecological representativeness* if the funding gap is addressed.

NIPAS system-wide Ecological Gap Assessment and Priority Setting to date:

For the past ten years, the Philippine Hotspot has undergone a series of ecological assessments to determine the adequacy of existing protected area system and over-all biodiversity conservation initiatives. Spearheaded by the Protected Areas and Wildlife Bureau of the Department of Environment and Natural Resources (PAWB-DENR) together with Conservation International (CI) and the University of the Philippines, the Philippine Biodiversity Conservation Priority-Setting Program (PBCPP) was completed in 2002 with 170 Terrestrial and 36 Marine Conservation Priority Areas (CPAs) delineated. The priority areas were identified based on combined experience of experts making the best use of available data and the consensus of the different thematic groups (plants, arthropods, herps, birds, mammals, inland waters and socio-economic). Although it was a critical and successful first step in identifying priority conservation sites in the country, many of the resulting priority areas were very large, and proved to be not practical from a manageability and funding availability perspective. Moreover, the priority areas lacked the quantitative data showing presence of target species for immediate action.

By identifying the Important Bird Areas (IBAs), Haribon Foundation and Birdlife International addressed the need for extensive data collection whilst going through the process of reviewing and spatially referencing all relevant existing information on birds to identify Key Conservation Sites. To address the shortcomings of the PBCPP, PAWB-DENR together with CI Philippines and Haribon Foundation began the process of applying the IBA framework for other taxonomic groups to refine the PBCPP priority areas into manageable areas or “Key Biodiversity Areas”.

The Key Biodiversity Areas (KBAs) are sites that encompass habitat critical to the survival of globally threatened and geographically concentrated species. The identification of KBAs follows strict criteria followed world-wide based on the presence of viable populations of species requiring urgent conservation action. The fundamental criteria for identifying key biodiversity areas which we have used are:

1. vulnerability - defined as those that support geographically concentrated species; and
2. irreplaceability - defined as those that support the regular presence of significant numbers of one or more globally threatened species.

Emerging Conservation Priorities:

Using the two criteria, 128 Key Biodiversity Areas have been identified for the Philippines. One hundred and nineteen (119) KBAs overlaps with one or more CPAs and eight KBAs have been identified outside of the CPAs.

Out of the 109 protected areas (PAs) established under NIPAS as of 2009, only 61 PAs overlap with 52 KBAs. This means that only 41% of the KBAs benefit from official safeguard status in the Philippines. The remaining 76 KBAs (59%) lack formal government protection.

In addition, 51 sites were identified as Candidate KBAs or research priorities based on historical data or habitat suitability. They are priority for field validation to determine the presence of the target species that will trigger the designation of such areas as KBAs.

System-wide Programmatic Priorities:

Typically, the approach for establishing the baseline and then advancing in each of these areas can be summarized as follows:

Element 1: Ecologically representative: Continue national ecological gap assessment taking off from the KBA initiative.

As outlined above, activities completed under the national ecological gap assessment include:

- a. Assemble taxonomy of all key national ecological habitats, and of all classes of national protected areas (e.g. IUCN classes 1 through VI)
- b. Assemble all existing data on national habitat distribution and National protected area boundaries, compile into compatible GIS data layers
- c. Obtain / create data layers for missing habitats, protected areas, etc.
- d. Create master national mapping system of national habitats and protected areas coverage
- e. Analyze for representation of major habitats in national protected areas system

The following documents are included as addendums in support of above accomplishments:

1. Addendum B. Map showing the protected areas in the country including their classifications
2. Addendum C. The KBA Process
3. Addendum D. Key Biodiversity Areas in the Philippines
4. Addendum E. KBA/NIPAS overlay including a list of KBAs not included in the NIPAS
5. Addendum F. Republic Act 7586 – An Act providing the establishment and management of National Integrated Protected Areas System (NIPAS), defining its scope and coverage, and for other purposes
6. Addendum G. DENR Memorandum Circular 2004-09 –Amending DMC 35 series of 1993 re: Criteria and Guidelines for Categorization of Protected Areas under the NIPAS
7. Addendum H. Republic Act No. 9147 – An Act Providing for the conservation and

protection of wildlife resources and their habitats, appropriating funds therefore and for other purposes (Wildlife Act).

8. Addendum I. Memorandum Circular 2007-02: Guidelines on the establishment and management of Critical Habitats

Activities still to be completed include:

- f. Analyze the ecosystem services benefits of different current and potential protected areas (carbon sequestration, climate adaptation, freshwater management, etc.)
- g. Establish meaningful national targets for biodiversity habitat protection, ecosystem service protection and climate mitigation & management for the national protected areas system
- h. Prioritize management of current and creation of new protected areas to achieve representative national targets for protected areas system with strengthened ecosystem services values to the national economy
- i. Identify Protected Areas for disestablishment under NIPAS for transition to a new management regime
- j. Conduct further ecological studies within candidate KBAs to determine its eligibility as an important conservation area that necessitates formal protection

Thus, under program element 1, this project seeks to provide funding for the conservation and protection of KBAs that are not covered by the current protected area system. In line with the country's commitment to the CBD's Program of Work for Protected Areas (POWPA), activities f - j. will be completed: a selection process and criteria identification will be undertaken to prioritize KBAs that need to be declared as a protected area under the National Integrated Protected Areas System (NIPAS). This will be part of the key milestones in the national strategic protected area plan for the Philippine Hotspot to be developed under this project.

Element 2: Effectively managed: Conduct a national management effectiveness assessment.

- a. Select a consistent management effectiveness assessment tool for protected areas and a service provider who can implement it or assist local protected areas staff to implement it
- b. Select a representative sample of protected areas to conduct the assessments

- c. Conduct the assessments to understand the standard of management and governance across the national protected areas system
- d. Compile the findings, and analyze to establish the overall strengths and weaknesses of the capacity and management effectiveness of the national protected areas agency
- e. Develop a capacity action plan to address the key areas requiring strengthening to secure the biodiversity, ecosystem service protection and climate mitigation & management objectives
- f. Design and implement a program to strengthen targeted management and governance capacities

Element 3: Supported by key stakeholders and communities: Conduct a national protected areas system stakeholder engagement assessment followed by suitable interventions:

- a. For a sample of key national protected areas system sites, assess the level of community knowledge, attitudes, engagement and behaviors toward the protected areas and their key conservation objectives,
- b. Design and implement a series of social marketing campaigns and governance and management capacity building interventions at these sites to engage stakeholders and build support and engagement of these communities in the protection and management of the protected areas. Strengthen access, benefit sharing and participation of local and indigenous communities in the Protected Area Governance to support the sustained achievement of national protected areas' biodiversity, economic, cultural and climate benefits.

Element 4: Sustainably funded: Conduct a national sustainable funding assessment:

- a. Compile existing budget and funding data for the national protected area system and a suitable sample of its individual component protected areas
- b. Estimate the overall cost centers and therefore budget needed annually to fund the protected areas system at differing levels of management effectiveness (status quo, low and high levels of effectiveness)

- c. Analyze the adequacy and levels and diversity of current funding sources for the national protected areas system in comparison to the actual and alternative desired funding levels, determine funding “gap”
- d. Conduct high-level analysis of the economic value and contribution of national protected areas system
- e. Analyze key economic factors to propose alternative potential new funding mechanisms for further investigation (e.g. increased national budget allocations, introduction of fees, development of ecotourism, sale of carbon credits, etc.)

Element 5: Managed for climate adaptation and mitigation: Imbue work streams 1 – 4 above with climate analysis and expertise to:

- a. Understand the carbon sequestration and storage, and climate adaptation value and potential of both the national protected areas system and key protected areas within the system
- b. Target the expansion of ecological representation of national protected areas system, its management, governance & engagement and funding so as to maximize those benefits, for example by enhancing connectivity and adequate protected area buffer zones.

* To extent possible, please draw directly from the Ecological Assessments completed as per [Activity 1.1](#) in the CBD [Programme of Work on Protected Areas](#).

3. SUPPORTING ASSESSMENTS AND PLANS

Please indicate the status of completion of the protected area system analyses that are called for by the CBD [Programme of Work on Protected Areas](#) and annex those that have been completed as supporting documents.

Protected Area System Assessment and Planning (Grouped by proposed program Element)	Programme of Work on Protected Areas activity #	Status of completion Please indicate 1-5 1 = Just started 2 = Fully underway 3 = Almost completed 4 = Completed 5 = Implementation plan developed	Annexed Please indicate all that apply
Element 1: Ecologically representative			
Ecological Gaps	1.1	4	
Transboundary Protection	1.3	2	
Element 2: Effectively managed			
Protected Areas Threats	1.5	2	
Governance	2.1	2	
Policy Environment	3.1	2	
Capacity Needs	3.2	2	
Management Effectiveness	4.2	2	
Element 3: Supported by key stakeholders and communities			
Costs and Benefits	2.1	1	
Participation	2.2	4	
Communication and Outreach	3.5	2	
Element 4: Sustainably funded			
Protected Areas Values	3.1	1	
Sustainable Financial	3.4	1	
Element 5 Managed for climate adaptation and mitigation			
Integration and Connectivity	1.2	2	
Research Needs	4.3	2	

* Please see **Addendum C** for fuller details as of December 2009. Differences between Addendum B and the above table are accounted for by the progress made in the last 6 months. The comprehensive report provided in Addendum B is currently being updated for submission to the CBD Secretariat and this updated version will be used to inform future iterations of this proposal.

4. SUPPORTING INFORMATION ABOUT PROTECTED AREA VALUES

Please briefly indicate available information about the value of protected areas in your country to climate change [mitigation](#), [adaptation](#), and [sustainable livelihoods](#). You are welcome to annex any existing supporting documents.

The comprehensive strengthening of the Philippines National Protected Areas System through this project is expected to secure or strengthen a range of economic, ecosystem service, social and climate benefits, such as:

- **Food security:** Protected Areas in the Philippines provide a vital food access safety net for the most disadvantaged sectors of society. The benefits can be enhanced by for example, access to sustainable Non-Timber Forest Product harvesting in terrestrial protected areas; access to near-shore gleaning adjacent to coastal/marine protected areas; and through the increased productivity of artisanal fisheries stock abundance via a spill-over effect from more effective marine protected areas.
- **Gender Equity:** The community PA governance work undertaken through this program will engage all segments of the local population. Further, the role of PAs on food security noted above often greatly affects women in their role as providers of food for the family and often as vendors of forest products harvested, fish and seafood, as well as supporting food sources for the most marginalized community members. This project recognizes important differences in how women and men use, manage, and conserve biological resources. Program planning integrates the understanding of gender-based differences and their implications for natural resources management and biodiversity conservation into conservation programs and policies. By giving women a clear role in biodiversity decision-making, the social acceptability and sustainability of Protected Area conservation and management efforts can be enhanced. Involving women is often the most effective avenue for generating behavioural change. Women and children are often the ones found gleaning in the buffer zones Marine Protected Areas and harvesting non-timber forest products in terrestrial protected areas around the country.
- **Cultural and spiritual access:** By engaging local communities in the planning and management of their protected areas, especially under proposed program element 3 (stakeholder engagement, access and benefit sharing) the process of this project will capture and account for community, cultural and spiritual associations with their protected land and sea-scapes.
- **Freshwater security:** Especially under increasingly erratic and extreme rainfall patterns anticipated as climate change progresses, the natural vegetative cover and soil structures assured by terrestrial protected areas will be essential to maintaining a hydrology which can provide the freshwater access needed by agriculture and by urban populations.
- **Income generation:** This project will explicitly seek to secure and improve the

sustainability of existing protected areas-related income, while also seeking to introduce new forms of income from protected areas such as permitting, payments for ecosystem services and ecotourism where sites have the suitable enabling factors (e.g. proximity to tourism destinations).

For Philippine Marine Protected Areas, for example, it is estimated that 1 km² of healthy coral reef generates an average of US\$50,000 annually from fishing and tourism. As a whole, Philippine coral reefs contribute at least US\$1.4 billion annually to the economy, 1.4% of gross domestic product (World Bank 2005). Even with such rich resources, coastal communities who depend directly on fish and other coastal and marine resources for their livelihood are among the poorest in the Philippines with 4 of 10 coastal residents living at or below poverty level. Household income levels are as low as US\$470 per year, compared to the national average of US\$2,820 (World Bank 2005).

- **Climate Change Adaptation and Mitigation:** Improved effectiveness of nationally and locally-managed protected areas included within the project is expected to increase their resilience to climate-related threats such as increased acidification, water temperature increases, sea level rise, and increased severity and frequency of storms. This is expected to help reduce the damage to both biodiversity and fisheries from such climate-related factors.

The relationship between the nation's terrestrial protected areas system and Climate change is of critical concern to the Philippines; it is one of the most climate change vulnerable areas in Southeast Asia (Yusuf and Francisco, 2009). While preparedness through disaster management and adaptation strategies is a priority, mitigation remains focal. The Philippines has acknowledged common but differentiated responsibility in reducing global carbon emissions, and though already a net carbon sink, can continue to make significant contributions, including through the forestry sector (Lasco and Pulhin, 2000, 2001). Forestry activities are particularly significant, as they offer joint adaptive and mitigative strategies (Ravindranath, 2007). Reforestation efforts, for example, can represent both an enhancement of carbon stocks and adaptive watershed management to reduce flooding (Dang et al., 2003).

As party to the United Nations Framework Convention on Climate Change, the Philippines adopts the ultimate objective of the Convention which is the stabilization of greenhouse gas concentrations in the atmosphere at a level that would prevent dangerous anthropogenic interference with the climate system which would be achieved within a timeframe sufficient to allow ecosystems to adapt naturally to climate change, to ensure that food production is not threatened and to enable economic development to proceed in a sustainable manner.

Recognizing the vulnerability of the Philippine archipelago including the network of protected areas and its surrounding communities to potential dangerous consequences of climate change such as rising seas, changing landscapes, increasing frequency and severity of droughts, fires, floods and storms, climate-related illnesses, damage to ecosystems and biodiversity loss that affect the country's environment, culture and economy, the Philippine Government has recently issued Republic Act 9729 otherwise

known as the Climate Change Act of 2009 that created and designated the Climate Change Commission to formulate a Framework Strategy on Climate Change together with other sectors of the society.

The climate change phenomenon likewise catalyzed emerging interests in Reducing Emissions from Deforestation and Forest Degradation (REDD) initiatives in the country. In order to address concerns on the inclusion of benefits from sustainable management and forest enhancement, REDD Plus was borne out of the need to include multiple (i.e. social and biodiversity) benefits from REDD initiatives. A multi-stakeholder group known as CoDe REDD emerged from this common concern which was intended to explore and develop REDD Plus in the Philippines while ensuring co-benefits for biodiversity conservation, ecosystem services and community development. The group eventually realized the need to develop a multi-stakeholder REDD Plus Strategy in order to facilitate REDD Plus Development in the Philippines. The National REDD Plus Strategy (NRPS) is currently being drafted and finalized which aims to take a broad approach among communities, allied agencies, organizations and stakeholder groups in promoting REDD Plus towards the attainment of sustainable forest development and poverty alleviation. Recognizing that significant areas of forest blocks that potentially store and sequester considerable amounts of Carbon are within Protected areas, the Protected area management sector is an active participant in this exercise and in the eventual implementation of this strategy. The time period of this plan is ten (10) years, covering the years 2010 to 2020.



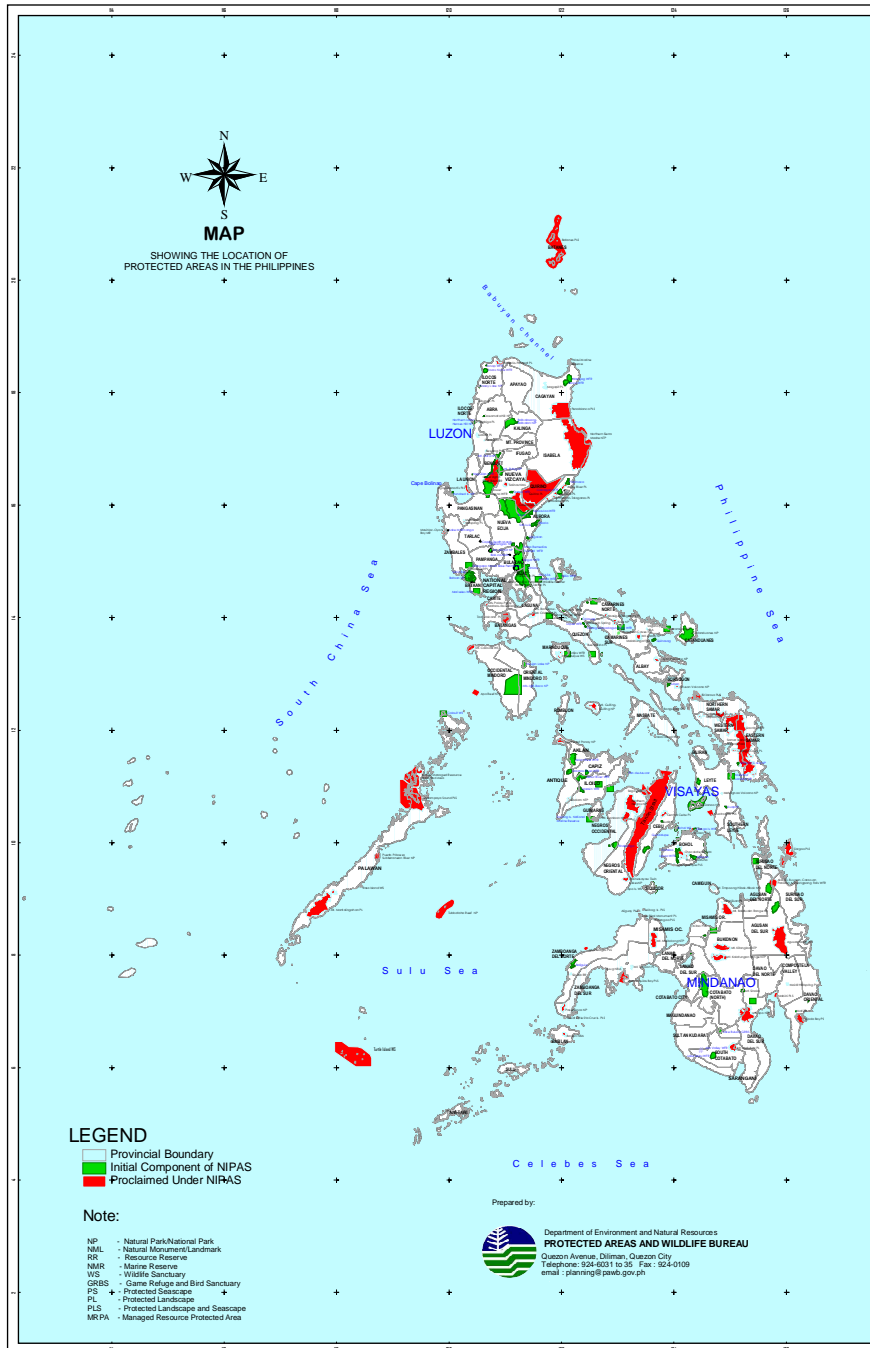
Addendum A: Budget Summary

In this addendum we summarize by activity and by year our estimate of the distribution of the total funding request (i.e. not the total budget devoted to this program). A separate full budget is under development to illustrate the full funding level which will be devoted to this program from DENR / PAWB annual budget, budgets of partners and from this request for support. When available, this fuller budget will thus also illustrate the substantial counterpart to this request for requested funds.

A. Budget summary – all years

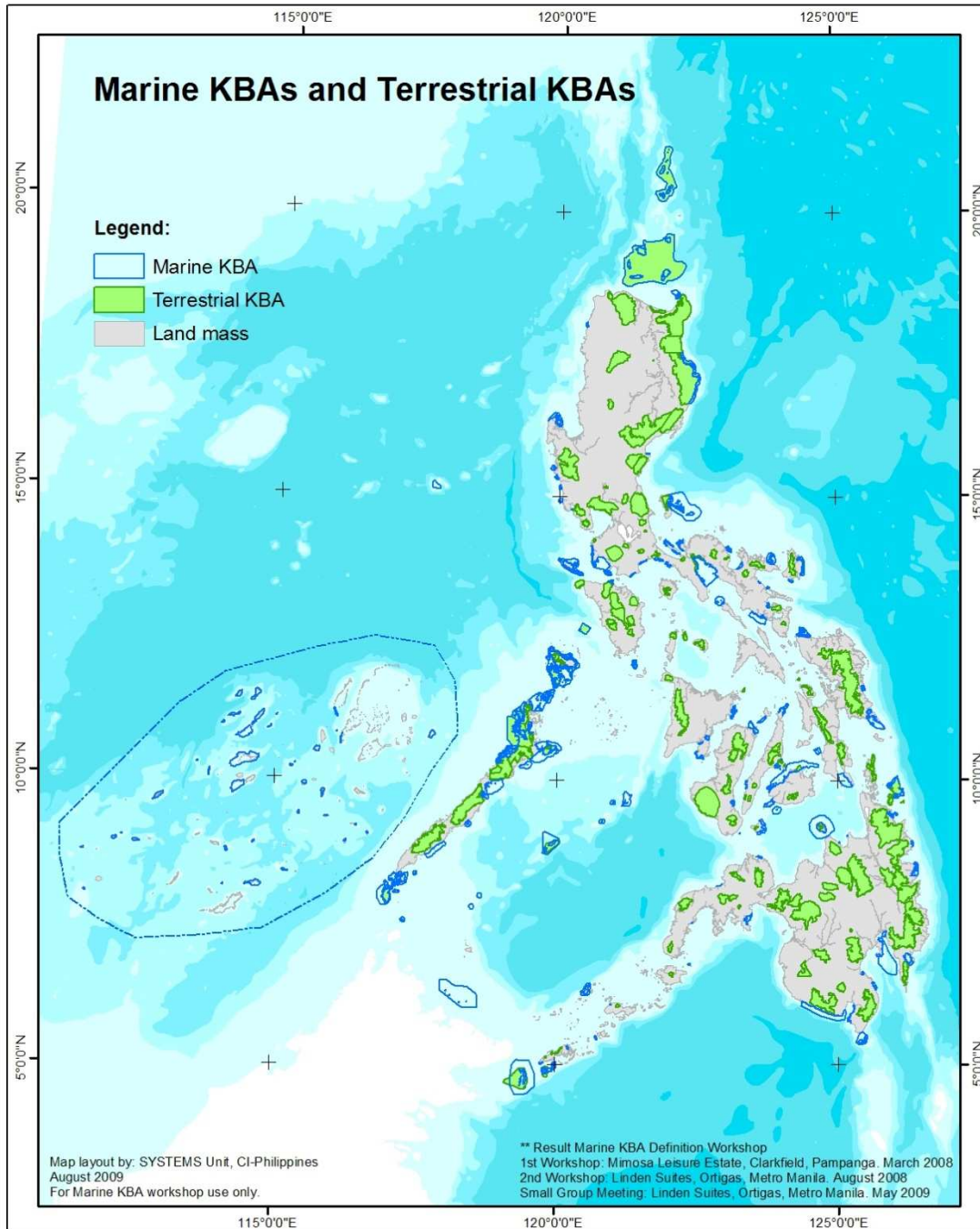
Program Element / Activity:	Year 1	Year 2	Year 3	Year 4	Year 5	Total
1. Complete national ecological gap assessment for protected areas	\$300,000	\$625,000	\$625,000	\$625,000	\$625,000	\$2,850,000
2. Complete national protected area management effectiveness assessment	\$350,000	\$750,000	\$750,000	\$750,000	\$750,000	\$3,380,000
3. Develop assessment and action plan for stakeholder engagement for key national PAs	\$200,000	\$1,150,000	\$2,000,000	\$1,050,000	\$50,000	\$4,450,000
4. Conduct national PA system sustainable funding gap analysis	\$200,000	\$1,750,000	\$1,750,000	\$1,750,000	\$1,750,000	\$7,200,000
5. Manage for climate	\$700,000	\$250,000	\$250,000	\$350,000	\$250,000	\$2,700,000
6. Project oversight	\$400,000	\$375,000	\$375,000	\$375,000	\$375,000	\$2,050,000
Total:	\$2,150,000	\$4,900,000	\$5,750,000	\$4,900,000	\$3,800,000	\$21,500,000 <i>[\$21,700,000 with \$200,000 proposal development grant)</i>

Addendum B. Protected Areas in the Philippines

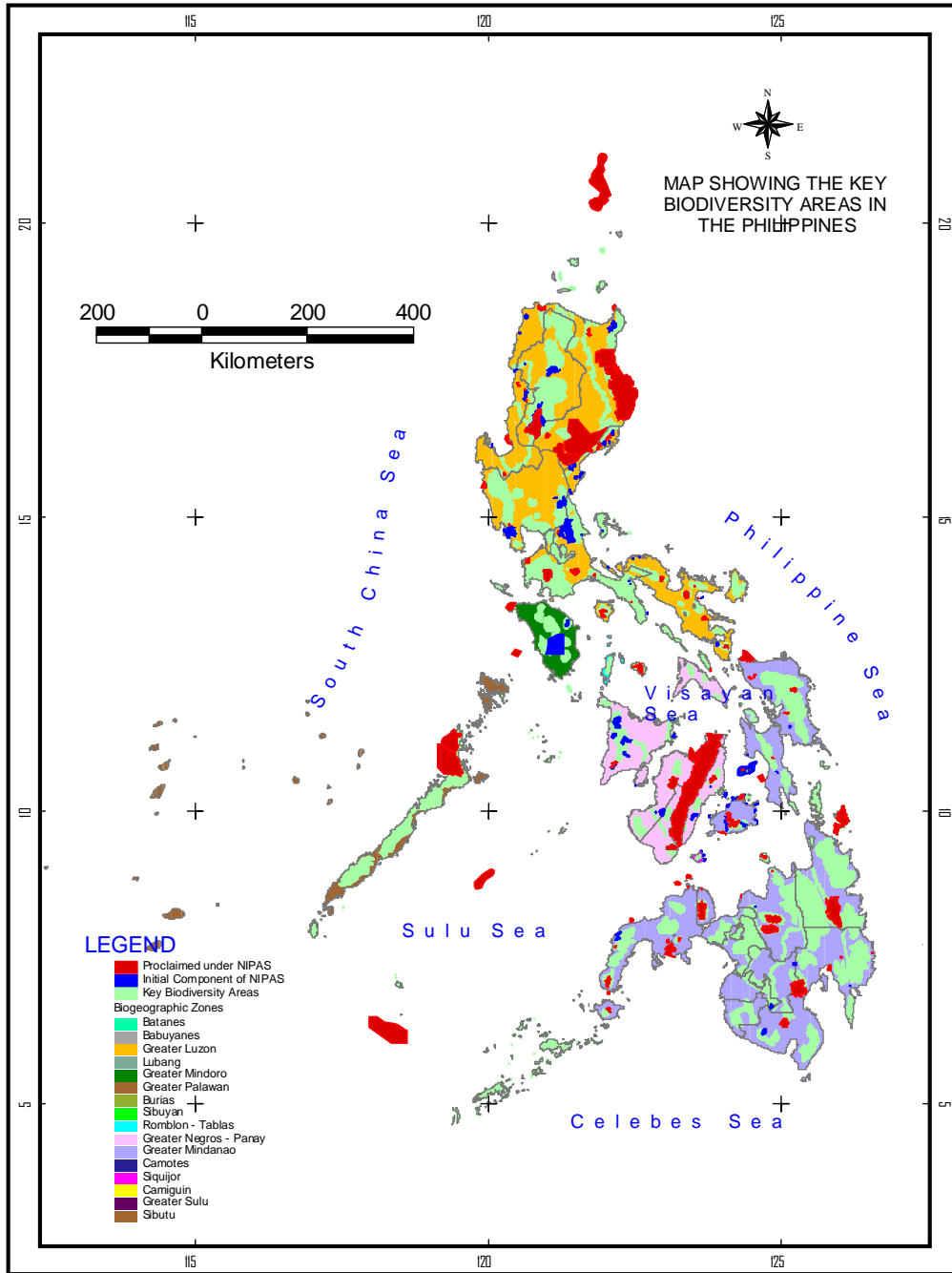


Addendum C. KBA Process (attached separately)

Addendum D: Key Biodiversity Areas



Addendum E: Overlay of KBAs and existing National Integrated Protected Area System (NIPAS) sites:



Key Biodiversity not covered by the existing Protected Area (PA) System

	KBA #	KBA_NAME	Area (has)
1	2	Babuyanes Islands	809,504.30
2	4	Apayao Lowland Forest	177,372.00
3	5	Balbalasang-Balbalan National Park	81,538.10
4	6	Mt. Pulag National Park	13,288.40
5	7	Buguey Wetlands	10,869.30
6	8	North Eastern Cagayan Protected Landscape and Seascape	235,346.00
7	11	Malasi Lake	162.28
8	15	Aurora Memorial National Park	47,145.70
9	16	Mt. Dingalan	46,890.90
10	17	Angat Watershed Forest Reserve	15,405.10
11	18	Mts. Irid-Angilo and Binuang	115,207.00
12	19	UP Land Grant	11,118.10
13	20	Polillo Island	20,275.10
14	21	Zambales Mountains	139,676.00
15	22	Candaba Swamp	1,910.59
16	23	Bataan Natural Park and Subic Bay Forest Reserve	25,254.40
17	24	Mariveles Mountains	12,097.10
18	25	Manila Bay	96,338.24
19	29	Mts. Banahaw-San Cristobal Protected Landscape	6,473.14
20	31	Pagbilao and Tayabas Bay	2,700.72
21	32	Lalaguna Marsh	3,191.55
22	35	Mt. Kulasi	3,046.31
23	38	Catanduanes Watershed Forest Reserve	28,243.70
24	39	Bacon-Manito	12,748.50
25	43	Puerto Galera	37,306.40
26	44	Mt. Halcon	50,950.20
27	45	Lake Naujan National Park	22,073.30
28	46	Iglit-Baco Mountains	56,299.60
29	47	Siburan	11,569.00
30	48	Malpalon	14,093.50
31	49	Mt. Hitding	17,768.00
32	50	Mt. Hinunduang	8,222.80
33	51	Apo Reef Marine Natural Park	27,586.34
34	53	Busuanga Island	16,326.40
35	54	Culion Island	39,346.10
36	55	Coron Island	7,340.17
37	58	Lake Manguao	6,453.65
38	59	Dumaran-Araceli	28,787.18
39	60	San Vicente-Taytay-Roxas Forests	81,164.74
40	62	Cleopatra's Needle	104,730.14

41	63	Victoria and Anepahan Ranges	164,789.31
42	65	Rasa Island	905.29
43	67	Balabac Island	35,830.10
44	70	Romblon Island	8,189.31
45	71	Balogo Watershed	10,495.10
46	73	Central Panay Mountains	105,583.00
47	74	South and North Gigante Island	2,247.71
48	77	Ban-ban	28,543.70
49	78	Southwestern Negros	196,438.00
50	80	Mt. Bandila-an	1,775.81
51	81	Mt. Capayas	13,610.40
52	83	Mactan, Kalawisan & Cansaga Bay	7,580.73
53	84	Olango Island	1,019.96
54	85	Nug-as & Mt. Lantoy	10,457.20
55	86	Mt. Kangbulagsing and Mt. Lanaya	2,621.71
56	88	Biliran and Maripipi Island	12,761.70
57	89	Anonang-Lobi Range	58,051.80
58	90	Mt. Nacolod	33,493.70
59	93	Mt. Kambinliw and Mt. Redondo	28,524.36
60	96	North Diwata Range	93,798.10
61	98	South Diwata Range	154,122.00
62	104	Mt. Kaluayan-Mt. Kinabalian Complex	180,983.00
63	105	Mt. Tago Range	83,416.30
64	109	Lake Lanao	36,351.30
65	110	Mt. Piagayungan	154,340.00
66	111	Mt. Sinaka	1,749.21
67	113	Ligawasan Marsh	39,424.10
68	114	Mt. Daguma	32,360.20
69	116	Mt. Busa-Kiamba	114,144.00
70	117	Mt. Latian Complex	95,077.00
71	119	Mt. Dapiak-Mt. Paraya	14,671.00
72	120	Mt. Sugarloaf	34,419.10
73	125	Mt. Dajo National Park	3,304.38
74	126	Tawi-tawi Island	5,850.58
75	127	Simunul and Manuk Manka Islands	19,401.96
76	128	Sibutu and Tumindao Islands	116,763.00
		TOTAL	4,348,914.17



Addendum F. Republic Act 7586 – An Act providing the establishment and management of National Integrated Protected Areas System (NIPAS), defining its scope and coverage, and for other purposes (attached separately)

Addendum G. Department Administrative Order 2008-26 – DENR Memorandum Circular 2004-09 –Amending DMC 35 series of 1993 re: Criteria and Guidelines for Categorization of Protected Areas under the NIPAS (attached separately)

Addendum H. Republic Act No. 9147 – An Act Providing for the conservation and protection of wildlife resources and their habitats, appropriating funds therefore and for other purposes (Wildlife Act). (attached separately)

Addendum I. Memorandum Circular 2007-02: Guidelines on the establishment and management of Critical Habitats (attached separately)

Addendum J: Baseline Status of Protected Areas System Assessment and Planning

In this addendum we summarize the status of NIPAS gap assessments and strategic plan development, by Program Element and by POWPA Activity #, as of December 2009:

**NATIONAL PROFILE ON THE IMPLEMENTATION OF
THE PROGRAMME OF WORK ON PROTECTED
AREAS**

COUNTRY:	Philippines
Name of person completing survey:	Norma M. Molinyawe, PAWB Biodiversity Management Division
Email address of person completing survey:	normsmolinyawe@yahoo.com
Date survey completed:	October 8, 2009

1) Has a multi-stakeholder advisory committee been formed to implement the PoWPA?	None Yet
2) Is there a strategic action plan for implementing the PoWPA?	No
3) If yes, please provide a URL (or attach a pdf) of the strategic action plan:	
4) If yes, which is the lead agency responsible for implementing the strategic action plan?	

Element 1: Ecologically representative

1.1 THE PROTECTED AREA NETWORK		
1) What progress have you made in assessing the representativeness and ecological gaps of your protected area network?	4 = complete	
2) If you have completed an ecological gap assessment, please indicate the URL (or attach a pdf) of the report:		
3) Do you have specific targets and indicators for the protected area system?	No	
4) If yes, please provide a URL (or attach a pdf) of the targets and indicators:		
5) What actions have you taken to improve the ecological representativeness of the protected area network? Please check all that apply, and provide a brief description:		
<input checked="" type="checkbox"/>	ACTION	DESCRIPTION
<input checked="" type="checkbox"/>	Created new protected area/s	Of the 128 identified Key Biodiversity Areas of the Philippines, there are now 49 protected areas covering 2.6 million hectares established under the National Integrated Protected Areas System
<input type="checkbox"/>	Expanded or reconfigured existing protected area/s	
<input type="checkbox"/>	Changed the legal status and/or governance type of existing protected area/s	
<input type="checkbox"/>	Other actions to improve representativeness of the network	

1.3 REGIONAL PROTECTED AREA NETWORKS AND TRANSBOUNDARY AREAS													
1) What progress have you made in identifying common conservation priorities and opportunities for transboundary protected areas?	2 = activity underway												
2) If you have completed an assessment of transboundary protected area opportunities, please indicate the URL (or attach a pdf):													
3) What actions have you taken to strengthen the regional protected area network and foster transboundary PAs? Please check all that apply, and provide a brief description:													
√	<table border="1"> <thead> <tr> <th>ACTION</th> <th>DESCRIPTION</th> </tr> </thead> <tbody> <tr> <td>Created transboundary protected area/s</td> <td>The Turtle Islands Heritage protected Area between Malaysia and Philippines is a good example of a working model of a transboundary protected area. On-going initiative through the Memorandum of Agreements among the Governments of Indonesia, Malaysia and the Philippines for the Conservation of the Sulu-Sulawesi Marine Eco-Region;</td> </tr> <tr> <td>Contributed to the creation of regional-scale conservation corridors</td> <td>On-going through the Regional Plan of Action of the Coral Triangle Initiative involving 6 countries of the Coral Triangle Region; Part of the on-going implementation of the Sulu-Sulawesi Marine Eco-Region Conservation Plan being implemented by the Governments of Malaysia, Indonesia and Philippines</td> </tr> <tr> <td>Created enabling policies for the creation of transboundary protected areas</td> <td></td> </tr> <tr> <td>Established a multi-country coordination mechanism</td> <td>On-going negotiation through the Coral Triangle Initiative involving 6 countries of the Coral Triangle Region in the Regional Plan of Action approved by the member countries and the individual National Plans of action; Established the Tri-National Committee for the implementation of the SSME Conservation Plan.</td> </tr> <tr> <td>Other actions to foster regional networks and transboundary areas</td> <td></td> </tr> </tbody> </table>	ACTION	DESCRIPTION	Created transboundary protected area/s	The Turtle Islands Heritage protected Area between Malaysia and Philippines is a good example of a working model of a transboundary protected area. On-going initiative through the Memorandum of Agreements among the Governments of Indonesia, Malaysia and the Philippines for the Conservation of the Sulu-Sulawesi Marine Eco-Region;	Contributed to the creation of regional-scale conservation corridors	On-going through the Regional Plan of Action of the Coral Triangle Initiative involving 6 countries of the Coral Triangle Region; Part of the on-going implementation of the Sulu-Sulawesi Marine Eco-Region Conservation Plan being implemented by the Governments of Malaysia, Indonesia and Philippines	Created enabling policies for the creation of transboundary protected areas		Established a multi-country coordination mechanism	On-going negotiation through the Coral Triangle Initiative involving 6 countries of the Coral Triangle Region in the Regional Plan of Action approved by the member countries and the individual National Plans of action; Established the Tri-National Committee for the implementation of the SSME Conservation Plan.	Other actions to foster regional networks and transboundary areas	
ACTION	DESCRIPTION												
Created transboundary protected area/s	The Turtle Islands Heritage protected Area between Malaysia and Philippines is a good example of a working model of a transboundary protected area. On-going initiative through the Memorandum of Agreements among the Governments of Indonesia, Malaysia and the Philippines for the Conservation of the Sulu-Sulawesi Marine Eco-Region;												
Contributed to the creation of regional-scale conservation corridors	On-going through the Regional Plan of Action of the Coral Triangle Initiative involving 6 countries of the Coral Triangle Region; Part of the on-going implementation of the Sulu-Sulawesi Marine Eco-Region Conservation Plan being implemented by the Governments of Malaysia, Indonesia and Philippines												
Created enabling policies for the creation of transboundary protected areas													
Established a multi-country coordination mechanism	On-going negotiation through the Coral Triangle Initiative involving 6 countries of the Coral Triangle Region in the Regional Plan of Action approved by the member countries and the individual National Plans of action; Established the Tri-National Committee for the implementation of the SSME Conservation Plan.												
Other actions to foster regional networks and transboundary areas													
√													
√													
√													
√													
√													
√													

Element 2: Effectively managed

4.1 and 4.2 MANAGEMENT EFFECTIVENESS AND BEST PRACTICES		
1) What progress have you made in assessing the management effectiveness of protected areas?		2 = activity fully underway
2) If you have completed an assessment of protected area management effectiveness, please indicate the URL (or attach a PDF):		
3) What percent of your protected areas has been assessed for management effectiveness?		10%
4) What actions have you taken to improve management processes within protected areas? Please check all that apply, and provide a brief description:		
√	ACTION	DESCRIPTION
√	Improved management system and processes	Are currently identifying the best tool available to systematically assess Philippine Protected Area effectiveness, to cover marine and terrestrial parks.
√	Improved law enforcement	Developed action plans for law enforcement specific to different national parks around the country, including the Turtle Islands Wildlife Sanctuary, El Nido Protected Area, Tubbataha Reefs Natural Park and other Terrestrial parks. Have a variety of experiences in different parks that can be shared as best practices for replication.
	Improved stakeholder relations	
	Improved visitor management	
	Improved management of natural and cultural resources	
	Other actions to improve effectiveness	

1.4 PROTECTED AREA MANAGEMENT PLANNING		
1) What percentage of your protected areas has an adequate management plan?	25% of the 49 Parks have approved management plans	
2) Please provide a URL (or pdf attachment) of an exemplary management plan:	Samar Island Natural Park Management Plan	
3) What actions have you taken to improve protected area management planning? Please check all that apply, and provide a brief description:		
√	ACTION	DESCRIPTION
√	Developed streamlined templates and tools for developing management plans	Updated the Guidelines through the Revised Implementing Rules and Regulations of the National Integrated Protected Areas System Act (Republic Act of the Philippines 7586)
	Provided training and/or technical support in management planning	
	Developed management plans for protected areas	There are 27 protected areas with management plans developed; some of these plans are currently undergoing review and updating to include new information and concerns, e.g. harmonization of ancestral domain plan into the PA plan.
√	Changed legislation and/or policy to allow for improved management planning	Updated the Guidelines through the Revised Implementing Rules and Regulations of the National Integrated Protected Areas System Act (RA 7586). The Revised IRR provides clarification on the process of management planning.
√	Improved the scientific basis of existing management plans	Some protected areas are undergoing revision/updating of the management plans due to new information provided by the scientific community/academe
√	Conducted protected area resource inventories	On-going initiative pursued by several protected areas through their respective Protected Area Management Boards (PAMB).
	Other actions to improve management planning	DENR PAWB in partnership with other partners has been developing a Management Effectiveness and Assessment Tool that is being pilot tested within several PAs prior to launch country wide.

1.5 PROTECTED AREA THREATS	
1) What progress have you made in assessing protected area threats?	1 = just started, limited progress
2) If you have completed an assessment of protected area threats, please indicate the URL (or attach a pdf):	
3) What actions have you taken to mitigate and/or prevent protected area threats? Please check all that apply, and provide a brief description	
√	ACTION
	DESCRIPTION
	Changed the status and/or governance type of a protected area
	Improved staffing number and/or skills to prevent and mitigate threats
√	Included measures to address threats in a management plan Made through the updating of the management plans. Some Management Boards addressed the threats resulting from the outcomes of the Biodiversity Monitoring System; Decisions/actions of the Management Boards are issued through Resolutions
	Improved natural resource management to prevent or mitigate threats
√	Improved protected area policies In some protected areas that are declared through Congressional Acts, penalties and fines were increased as part of the provisions of the laws. Several Department Administrative Orders relating to park policies have been approved and distributed to the different parks and their management boards.
	Developed a climate resilience and adaptation plan
	Changed market incentives to reduce or prevent threats
√	Improved monitoring and detection of threats Made possible through the Biodiversity Monitoring System installed in some protected areas; development activities are covered by Environmental Impact Assessment and Environment Compliance Certificate program.
	Evaluated the efficacy of threat-related actions
	Improved public awareness and behavior regarding threats
√	Changed laws and policies related to threats Updating of policies including penalties are done through individual laws creating the protected area



Convention on
Biological Diversity



v	Restored degraded areas	Part of the Upland Development Program which focussed on the rehabilitation of degraded portions of the protected area through involvement of local communities
	Other actions to mitigate and prevent threats	

2.1 EQUITY, BENEFITS AND GOVERNANCE		
1) What progress have you made in assessing the costs, benefits and values of protected areas within the protected area system?		1 = just started, limited progress
2) If you have completed an assessment of protected area costs, benefits and values, please indicate the URL (or attach a pdf):		
3) What actions have you taken to improve equitable benefits sharing? Please check all that apply, and provide a brief description		
√	ACTION	DESCRIPTION
	Developed compensation mechanisms	
	Developed equitable benefits-sharing mechanisms	
√	Diverted PA benefits towards poverty alleviation	Some protected areas were able to utilize a certain percentage of fees generated by protected areas to support livelihood projects of local communities upon approval of the PA Management Boards
	Other actions to strengthen equitable benefits sharing	
4) What progress have you made in assessing protected area governance?		1 = just started, limited progress
5) What percentage of protected areas has been assigned an IUCN category?		80%
6) If you have completed an assessment of protected area governance, please indicate the URL (or attach a pdf):		
7) What actions have you taken to improve and diversify governance types? Please check all that apply, and provide a brief description		
√	ACTION	DESCRIPTION
	Created new protected areas with innovative forms of governance	The Tubbataha Management Board has adopted a co-management structure wherein the management is managed by both a Department Representative and a representative of the Palawan Provincial Government which has led to a very effective implementation of the parks rules and policies.
	Changed laws or policies to enable new governance types	This will be part of the expected outcome of a UNDP GEF Funded Project entitled "Expanding and Diversifying National Terrestrial Protected Areas System of the Philippines" to be implemented before the end of the 2009
	Other actions to diversify governance types	Initiated an orientation workshop to have appreciation and understanding of PA governance types in partnership with the ASEAN Centre for



Convention on
Biological Diversity



		Biodiversity based in the Philippines.
--	--	--

Element 3: Supported by key stakeholders and communities

3.2, 3.3 and 3.5 PROTECTED AREA CAPACITY, TECHNOLOGY AND EDUCATION		
1) What progress have you made in assessing protected area capacity needs?	1 = just started, limited progress	
2) If you have completed an assessment of protected area capacity needs, please indicate the URL (or attach a PDF):		
3) What actions have you taken to improve capacity, the use of appropriate technology and/or strengthen education programs? Please check all that apply, and provide a brief description:		
√	ACTION	DESCRIPTION
	Created a professional development program for protected area practitioners	A significant portion of this is included in the Graduate Program leading to the Master's Degree in Public Management with Major on Biodiversity Conservation Management initiated in collaboration between the Development Academy of the Philippines and the Department of Environment and Natural Resources (DENR). The beneficiaries are the permanent employees of the DENR under its Graduate Scholarship Program. The Ateneo University School of Governance, a private university is also currently pilot testing a short term course on biodiversity conservation and management. Our Partner Rare Conservation also has a Masters Degree in Conservation Communications at the University of Texas El Paso that PA managers and staff will be able to avail.
	Trained protected area staff	
	Increased the number of protected area staff	
√	Developed a system for capturing and sharing traditional knowledge	This is made possible through selected cross visits being undertaken by some PAMBs to other more effectively managed protected areas in the Philippines
√	Developed protected area curricula with educational institutions	Through the initiative of the UNDP-GEF Project for the Samar Island Natural Park, a Memorandum of Agreement with the Department of Education, Region was signed to develop and pilot teaching modules on biodiversity conservation and protected area management for primary and secondary schools that will later be adopted into the national school curriculum.
√	Produced public outreach materials	This is part of the management activities of each protected area established under the National Integrated Protected Areas System
√	Conducted public outreach programs	This is part of the management activities for each protected area established under the National Integrated Protected Areas System
	Developed effective mechanisms to exchange lessons within and beyond the protected area system	
	Other actions to improve capacity	Informal capacity building mechanism adopted by the Protected Area Management Boards include cross visits to other protected areas in the Philippines to have direct contact with the other Management Boards and to provide venue for exchange of lessons learned

2.2 INDIGENOUS AND LOCAL COMMUNITIES		
1) What progress have you made in assessing indigenous and local community participation in key protected area decisions?	2 = activity fully underway	
2) If you have completed an assessment of community participation, please indicate the URL (or attach a PDF):		
3) What actions have you taken to improve indigenous and local community participation? Please check all that apply, and provide a brief description:		
√	ACTION	DESCRIPTION
√	Improved laws and/or policies to promote participation	Clarify the roles and responsibilities of various stakeholders in the management of protected areas thru the Revised IRR of the NIPAS Act
	Improved mechanisms for participation of indigenous and local communities	
√	Increased participation of indigenous and local communities in key decisions	RA 7586 or the NIPAS Act of 1992 provides the mechanism for involving the indigenous and local communities in the management of protected areas; they are members of the PA Management Boards
	Other actions to promote participation	

Element 4: Sustainably funded

3.1 POLICY ENVIRONMENT		
1) What progress have you made in assessing the policy environment for creating and managing protected areas?	2 = activity fully underway	
2) If you have completed an assessment of the protected area policy environment, please indicate the URL (or attach a PDF):		
3) What actions have you taken to improve the protected area policy environment? Please check all that apply, and provide a brief description		
√	ACTION	DESCRIPTION
√	Harmonized sectoral policies and laws to support effective management planning and policies	The Revised Implementing Rules and Regulation (IRR) of the NIPAS Act requires the integration of protected areas in the comprehensive land use plans of the local government units.
	Integrated PA values and ecological services into the national economy	
√	Improved policy decision-making mechanisms and accountability	Clarified the roles and emphasized the accountabilities of the PA Management Boards over the management of protected areas during the National Summit of PAMBs held last February 2009
	Developed positive market incentives to support protected areas	
	Removed perverse incentives that hinder effective management	
	Strengthened legal and judiciary systems for establishing and effectively managing protected areas	
	Cooperated with neighboring countries	
	Other actions to improve the policy environment	

3.4 SUSTAINABLE FINANCE		
1) What progress have you made in assessing protected area sustainable finance needs?		2 = activity fully underway
2) If you have completed an assessment of community participation, please indicate the URL (or attach a PDF):		
3) What actions have you taken to improve the sustainable finance of your protected areas? Please check all that apply, and provide a brief description		
√	ACTION	DESCRIPTION
	Developed new protected area funding mechanisms	
√	Developed protected area business plans	This is part of the management plans of protected areas promoting especially the ecotourism potential of the protected area.
	Developed revenue-sharing mechanism	
	Improved resource allocation procedures	
	Provided financial training and support	
	Improved budgeting process	
	Improved accounting and monitoring	
	Improved financial planning	
	Removed legal barriers to sustainable finance	
	Clarified inter-agency fiscal responsibilities	
	Other actions to improve sustainable finance	Part of the new provisions of the Revised IRR of the NIPAS Act

Element 5 Managed for climate adaptation and mitigation

1.2 PROTECTED AREA CONNECTIVITY AND INTEGRATION		
1) What progress have you made in assessing protected area connectivity and integration?	1 = just started, limited progress	
2) If you have completed an assessment of protected area connectivity and integration, please indicate the URL (or attach a pdf):		
3) What actions have you taken to improve protected area connectivity and integration? Please check all that apply, and provide a brief description:		
√	ACTION	DESCRIPTION
	Changed the legal status and/or governance in key connectivity areas	
√	Created new protected areas in key connectivity areas	Established protected areas in 3 identified biodiversity corridors, e.g. Mt. Mantalingahan Protected Landscape in Palawan Biodiversity Corridor and 5 Watersheds in Eastern Mindanao Biodiversity Corridor
	Improved natural resource management to improve connectivity	
√	Designated connectivity corridors and/or buffers	Designation is included in the National Biodiversity Strategies and Action Plan of the Philippines. Further reiteration was made under the Philippine Biodiversity Priority Setting Program. Management framework plans for 3 selected biodiversity corridors were prepared in consultation with stakeholders through the initiative of the Conservation International - Philippines
	Created market incentives for promoting connectivity and PA integration	
√	Changed awareness and behavior of key stakeholders in key connectivity areas	Part of the management framework plans mentioned above
	Improved laws and policies within or around key connectivity areas	
√	Restored degraded areas in key connectivity areas	On-going initiative through the Upland Development Program and some projects supported by private sector as part of their Corporate Social Responsibility programs in partnership with the DENR.
	Changed land use planning, zoning and/or buffers in key connectivity areas	
	Removed barriers to connectivity and ecological functioning	
	Other actions to improve connectivity and integration	



4.3 and 4.4 MONITORING AND RESEARCH		
1) What progress have you made in identifying critical research and monitoring needs across the protected area system?	1 = just started, limited progress	
2) If you have completed an assessment of critical research needs, please indicate the URL (or attach a PDF):		
3) What actions have you taken to improve protected area research and monitoring? Please check all that apply, and provide a brief description:		
√	ACTION	DESCRIPTION
	Assessed the status and trend of key biodiversity	
√	Developed or improved a biological monitoring program	Installed the Biodiversity Monitoring System in most of the protected areas through the participation of the local communities/protected area stakeholders
	Improved protected area research on socio-economic issues	
	Promoted dissemination of protected area research	
	Revised management plan based on monitoring and/or research results	
√	Changed management practices based on the results of monitoring and/or research	Some Protected Area Management Boards have issued its own policies resulting from Monitoring and Evaluation Systems they have adopted, i.e., moratorium of visitor entry in some portions of the protected area to give time for the area to recover from damages brought about visitor impacts.
	Other research and monitoring activities	