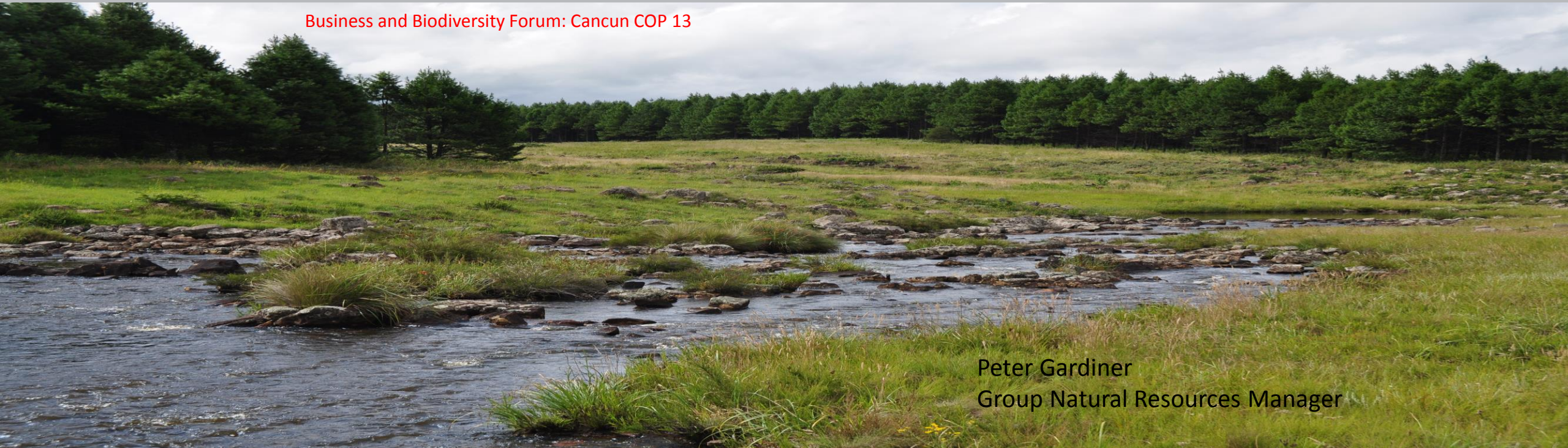


Seeking a Balance!

“Accounting” for Natural Capital in production landscapes

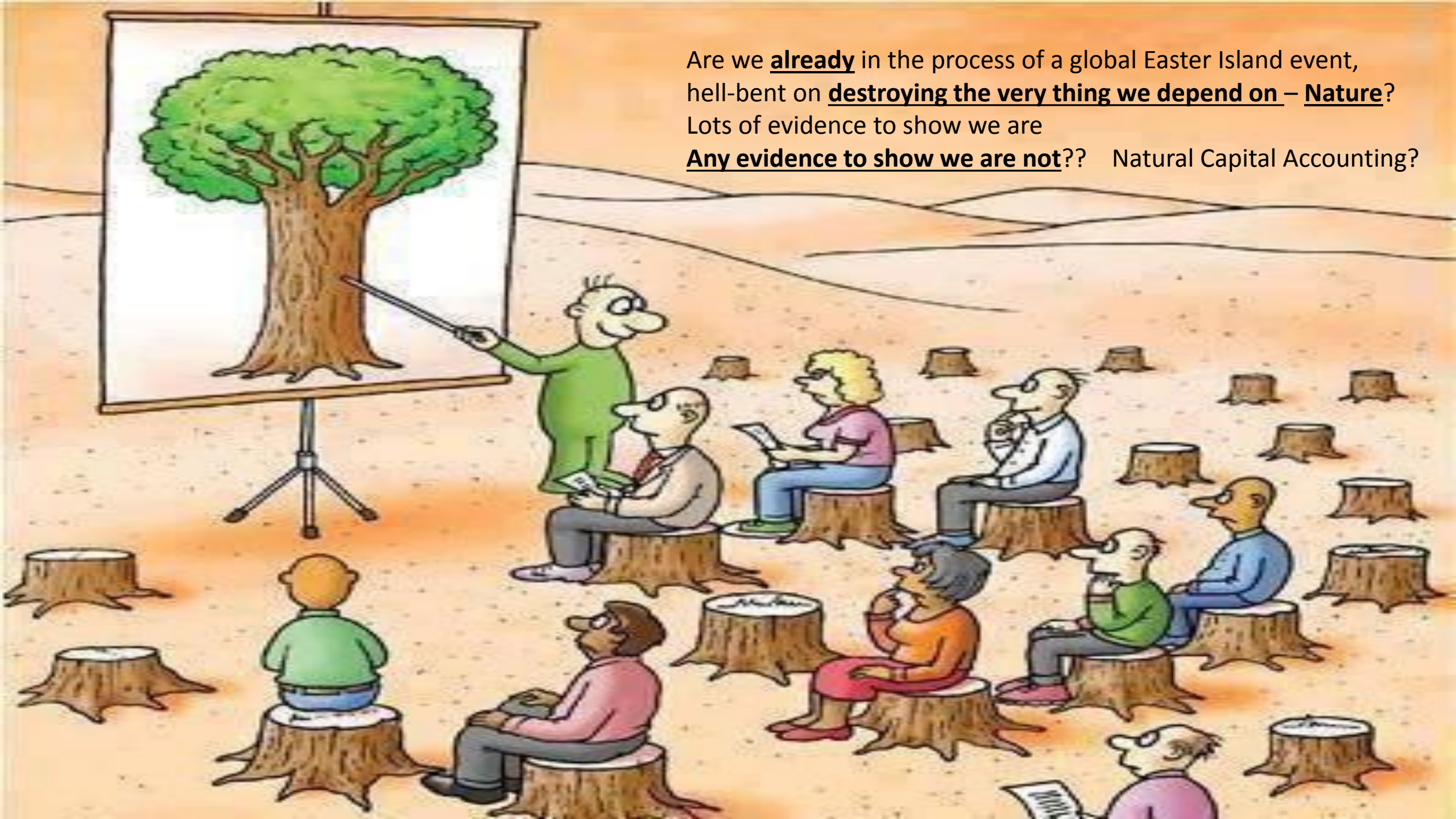


Business and Biodiversity Forum: Cancun COP 13



Peter Gardiner
Group Natural Resources Manager

Are we **already** in the process of a global Easter Island event,
hell-bent on **destroying the very thing we depend on** – **Nature**?
Lots of evidence to show we are
Any evidence to show we are not?? Natural Capital Accounting?



An aerial photograph of a tropical forest landscape. The dense green canopy of the forest is punctuated by numerous irregular, light-colored clearings and paths. These clearings are arranged in a somewhat linear fashion, following a winding road or trail that cuts through the forest. The clearings vary in size and shape, some appearing as small patches and others as larger, more elongated areas. The overall impression is one of a forest being gradually cleared for agricultural purposes.

Wall to wall agriculture

palm oil

sugar

coffee or soy

maize or other crops



Americas and others:
Incredible agronomy skills but Nature
forgotten
Not a blade of grass or sign of any other
species



Europe

More patches but same effect

Not a blade of grass for a pollinator or
wetland conserved

Forestry Prior to Rio WSSD 1992

Wall to wall forestry plantations were common

Eucalyptus (Gums)

Pines

Acacia

but since Rio?

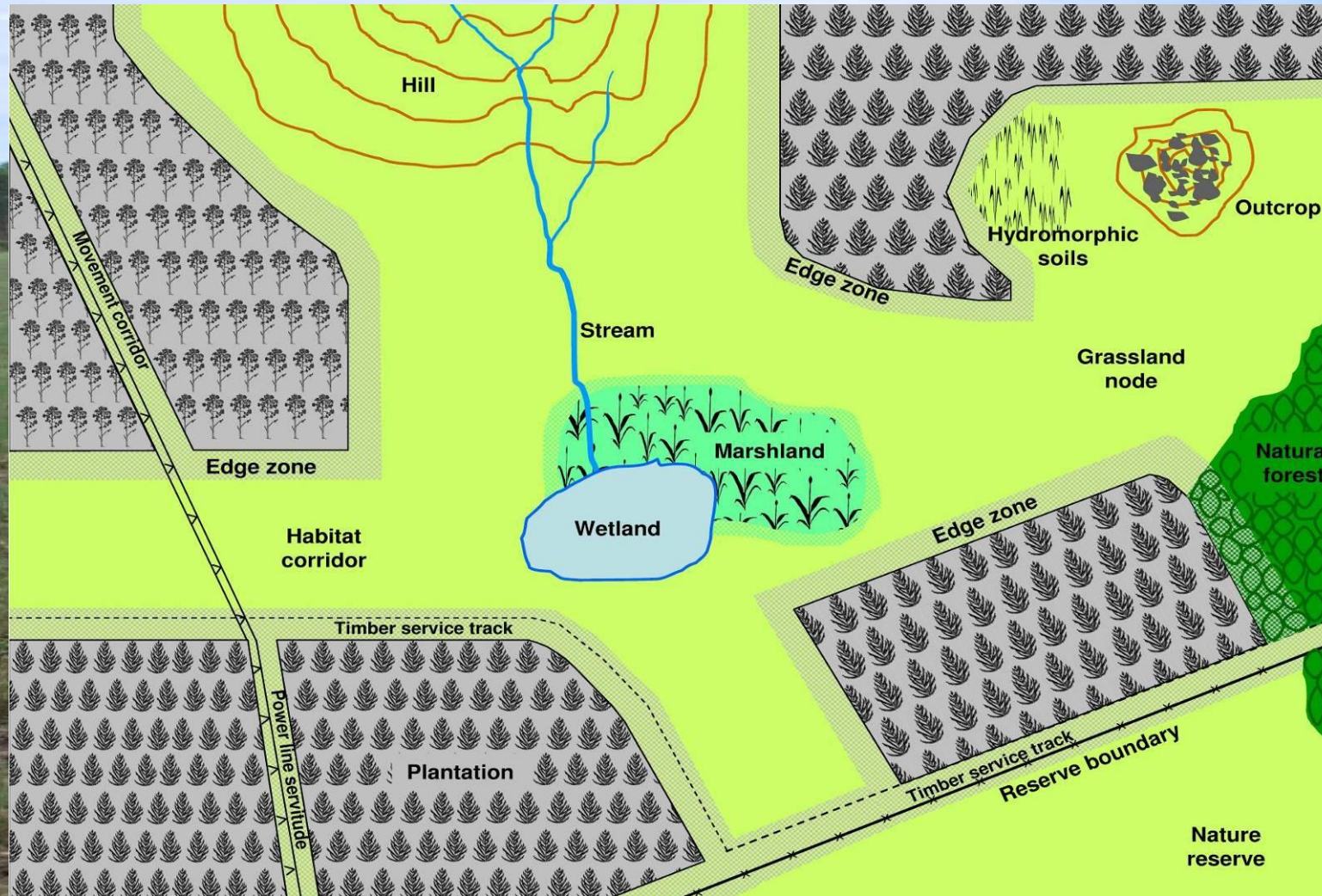
A journey from “wall to wall” forestry plantations
to

“a new generation plantation” Wetlands & Rivers shape effective
“Ecological Networks”



WWF New Generation Plantation (NGP) platform promotes NGP plantations with social, environmental and economic integrity – important lessons for agriculture and other land use

Ecological networks are the connections and all other natural elements in a production landscape

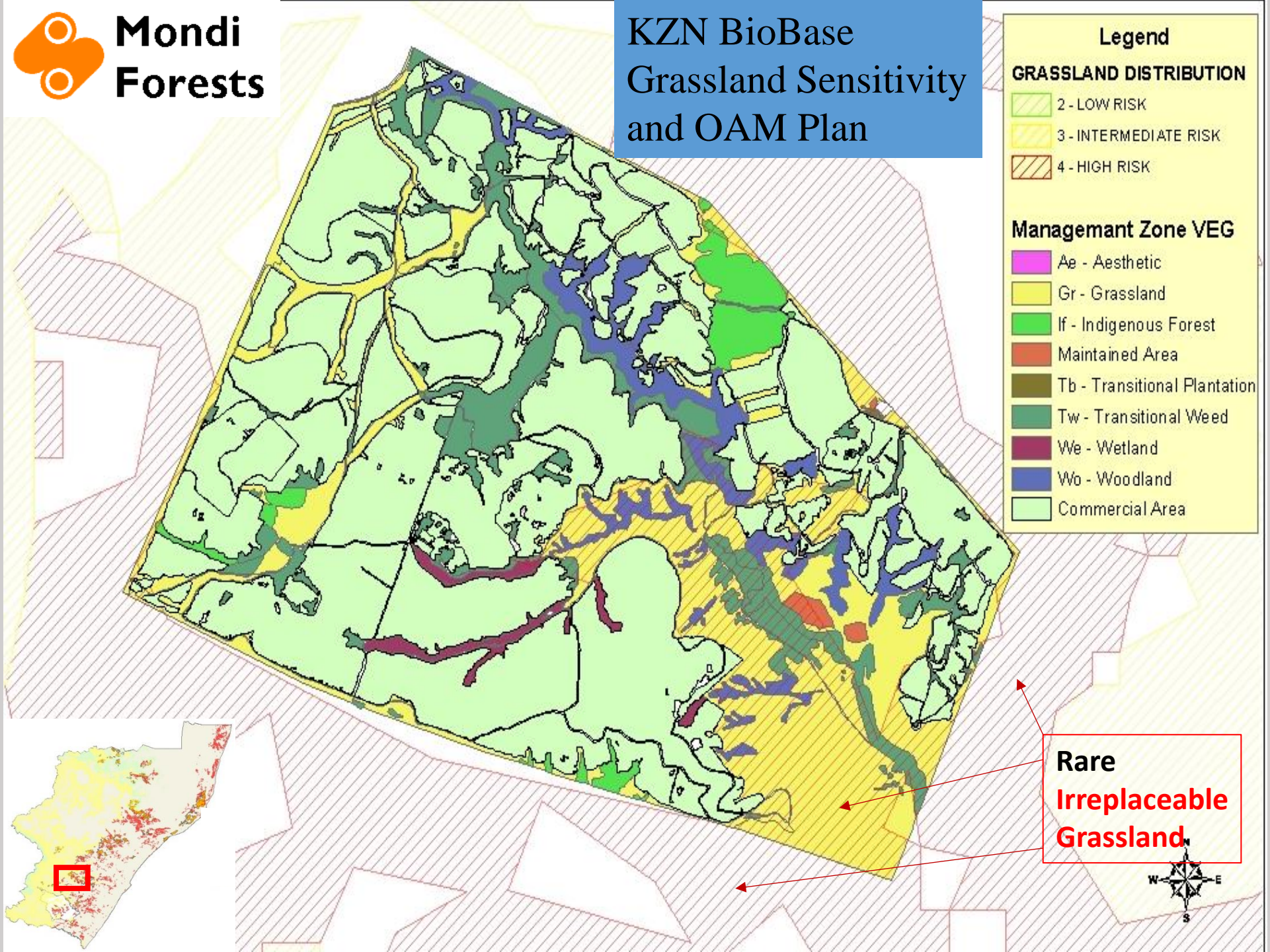


Samways, M.J., Bazelet, C. and Pryke, J.S. (2010) Provision of ecosystem services by large scale corridors and ecological networks. *Biodiversity and Conservation* 19:2949–2962



Ecological Networks: Key aspects of Natural Capital – wetlands – riparian areas – remnant patches and other HCV areas conserved as part of our production landscapes

KZN BioBase Grassland Sensitivity and OAM Plan





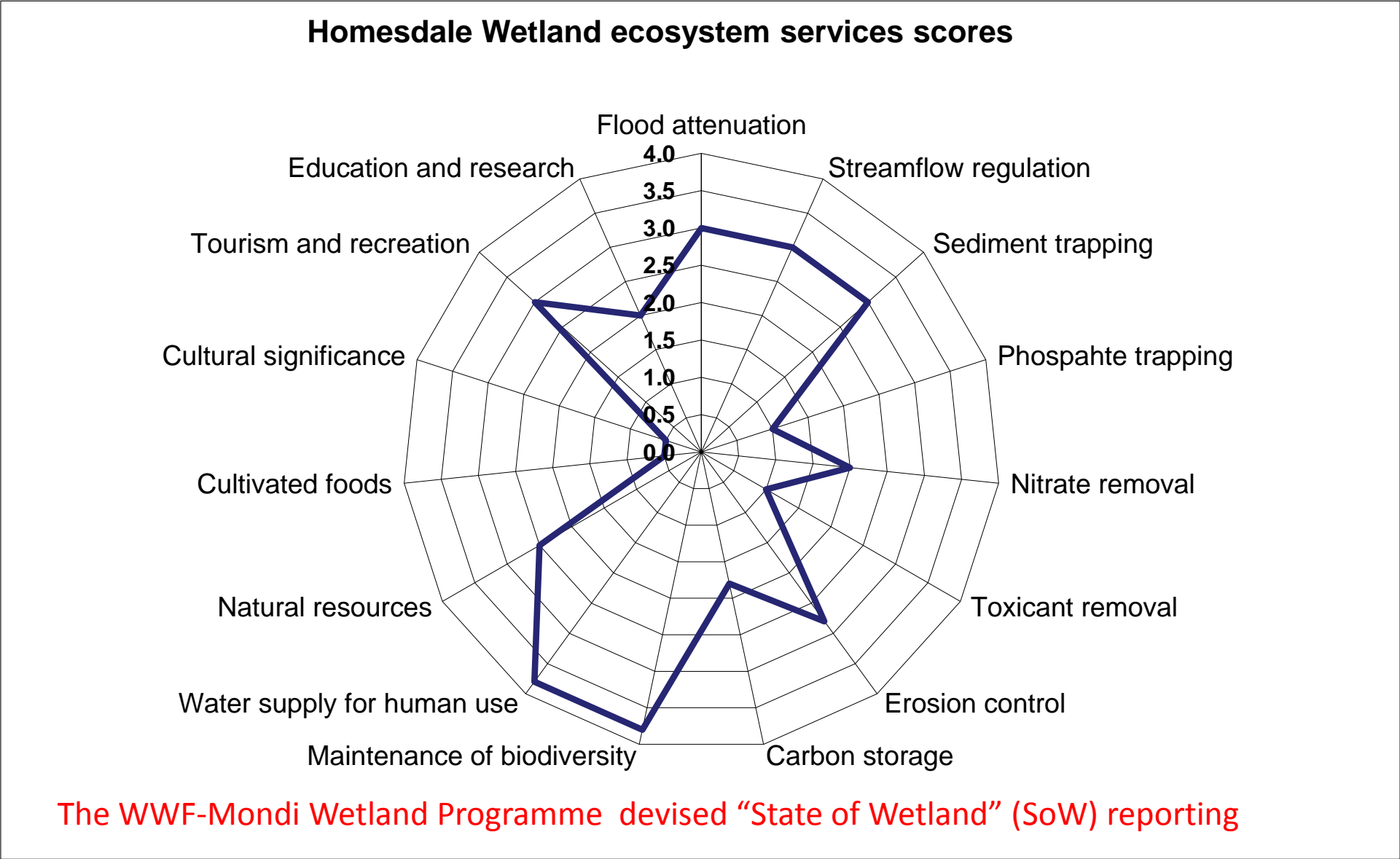
Mosaic production landscape that includes key aspects of Natural Capital

Sub-water management area
Mondi property boundaries
 BU CENTRAL
 BU NORTH
 BU SOUTH
 BU SQF
 MSN

BIOREGIONS
 Indian Ocean Coastal Belt
 Lowveld Bioregion
 Sub-Escarpment Savanna Bioregion
 Mesic Highveld Grassland Bioregion
 Sub-Escarpment Grassland Bioregion



NB The role of Management in valuing and maintaining Natural Capital – as important as Conservation

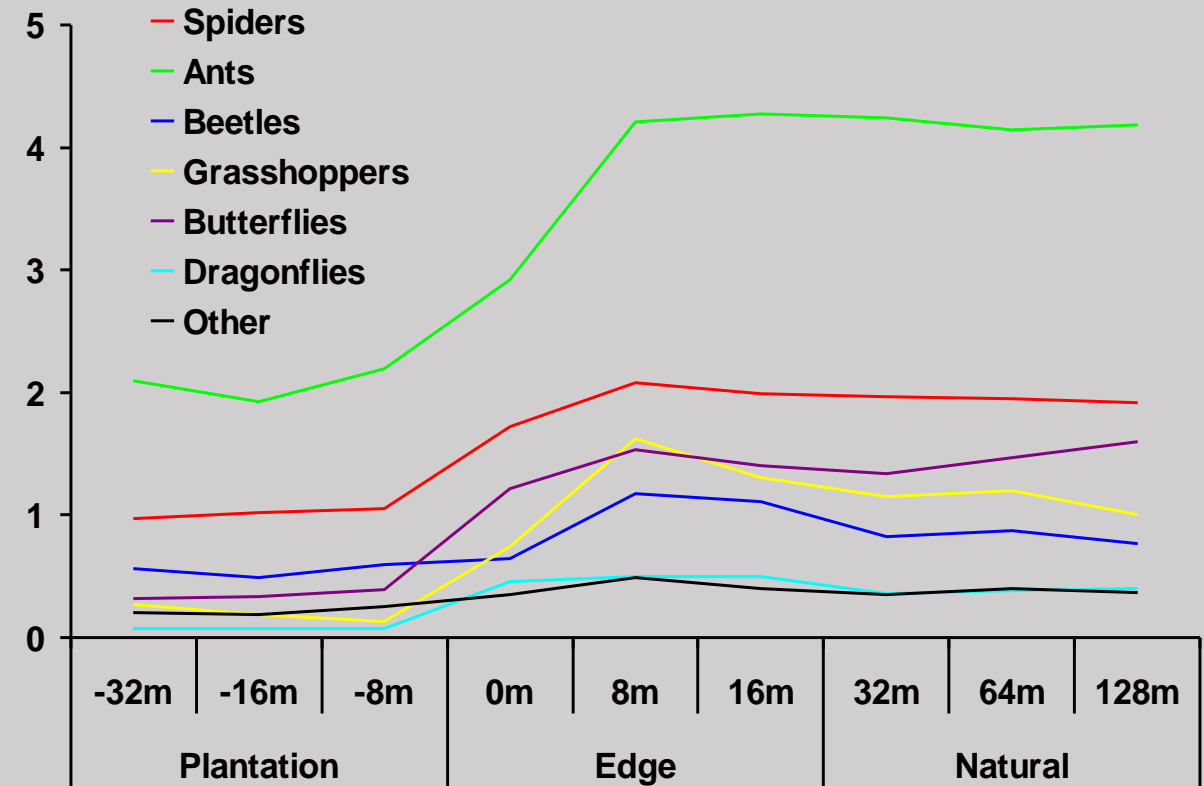


A photograph of a wetland landscape. In the foreground, there is a body of water with several lily pads and purple flowers. Two ducks are swimming in the water. The background consists of a grassy field and a line of trees under a cloudy sky.

Fine filter: species
Mesofilter: features
Coarse filter: landscape
Huge natural heterogeneity

What filter do we use to measure the Natural Capital -- all – part or everything ?
Can a single dragonfly (bio-indicator) tell us this wetland is in a good state?

Database 846 species and 56256 individuals



In fact, at Stellenbosch University, we have shown that these small animals use these corridors as habitats in their own right, giving the corridors themselves their own inherent biological value.

Professor Samways :MENP

A “scientific accounting” of natural Capital

Hooligan species...

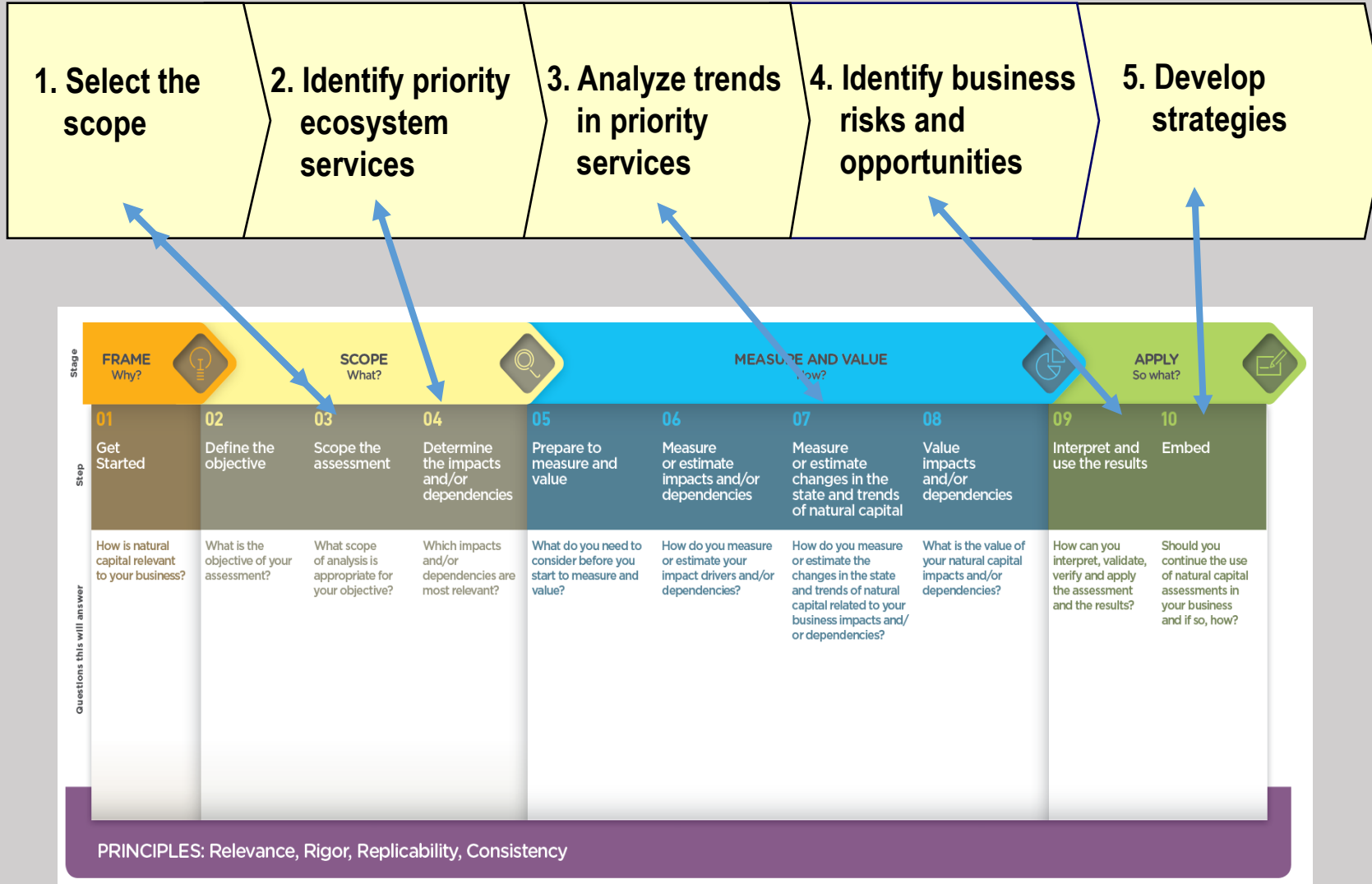


Mondi Gilboa: HCV Rivers, wetlands, mist-belt grasslands
a registered private Nature Reserve

Another form of Natural Capital Accounting?



NCP and the Corporate Ecosystem Services Review



Natural Capital: Soil-Water-Biodiversity quo vadis?

For Governments, Companies, Local People and NGOs:

What do you have – what is there? (Bio-indicators, EO, GIS, Social Media, ESR, NCP)

What you are losing (lost) or conserving?

What is the cost/value -- \$, restoration, reputation, irreplaceability, cultural, spiritual?

If its only \$ someone can buy it??

Whatever outcome it requires careful management and reporting at all levels

A photograph of a savanna landscape. In the background, two hippos are partially visible, partially obscured by dry branches and green foliage. In the foreground, two small birds with black and white plumage are perched on a thick, horizontal, weathered branch. The ground is dry and sandy. The text is overlaid on the upper left portion of the image.

**Future of Production Landscapes
-conserve biodiversity and interactions as
part of the process.**

Thank you