

# CONANP's Public-Private Partnership Initiative:

## Innovative approaches for biodiversity conservation

Alejandro del Mazo Maza  
December 3<sup>rd</sup>, 2016

# Protected Areas: an investment to achieve sustainable development



**Water infiltration** at Izta-Popo National Park benefits **13 million people**, including **Mexico City**.



**Touristic destinations** close to PA contribute with **USD 810,000 million** annually for this sector.



**Mangroves** in PA provide protection for people against hurricanes worth almost **USD 3,700 million** annually.



**Cabo Pulmo National Park** provides **932 tons** of commercial species worth **USD 1.2 million** annually for neighboring fisheries



# Productive Projects in PA

SEMARNAT  
SECRETARÍA DE  
MEDIO AMBIENTE  
Y RECURSOS NATURALES



**740**  
productive projects

**18,000**  
producers

**28**  
states

**193**  
municipalities

**496**  
localities



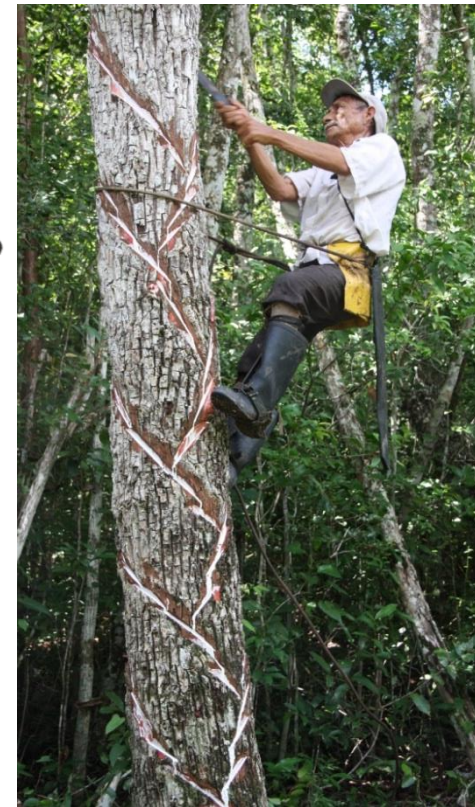
- 2,000 producers
- 56 cooperatives
- 300 tons produced annually
- Exportation to 14 countries in Europe, Asia & Oceania



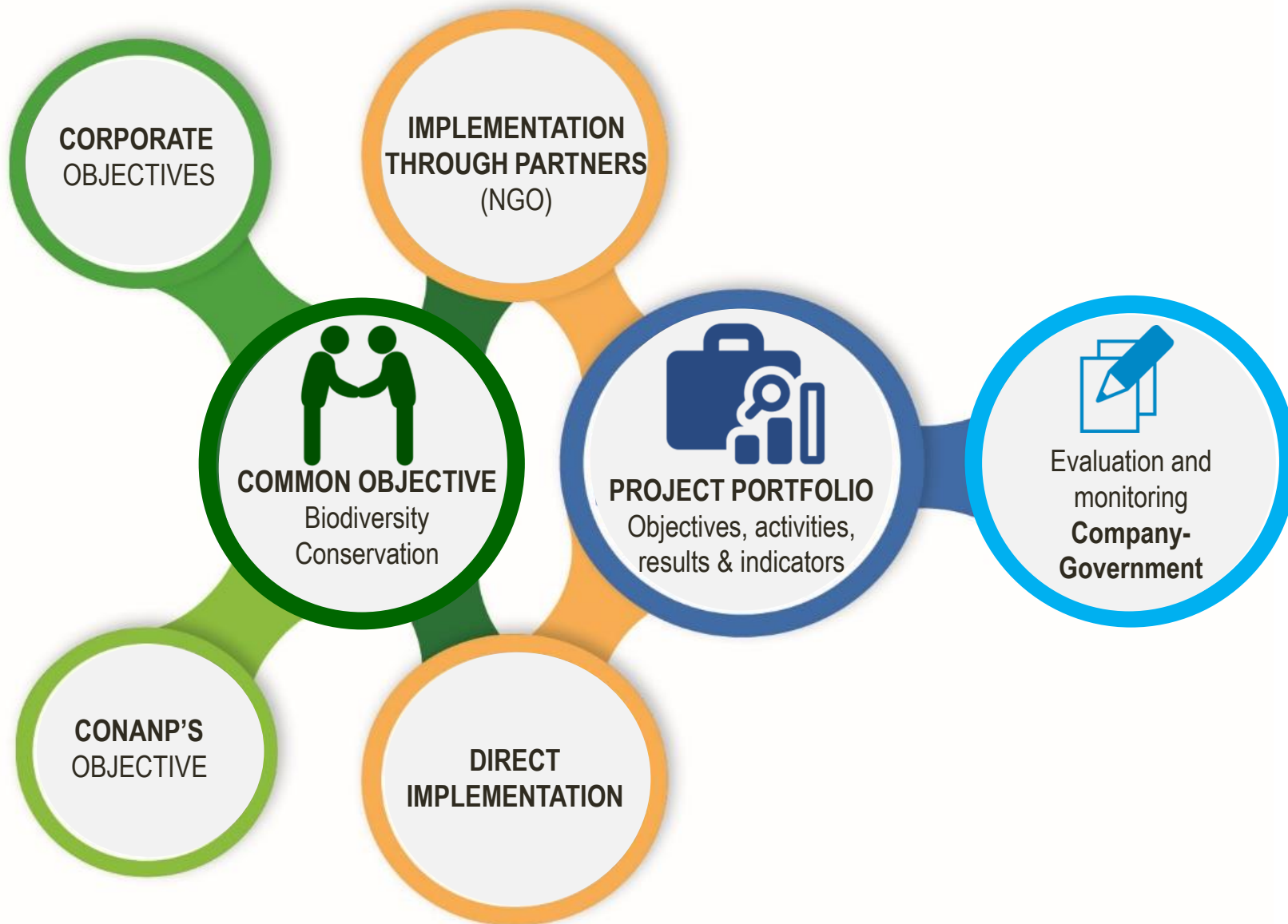
- 320 producers
- 200 tons produced annually
- 50% placed in foreign markets



- 478 producers
- 400 tons of coffee produced annually
- 95% placed on international markets



# Generating synergies between public and private interests



# *Thank You*

Alejandro del Mazo Maza  
National Commissioner for Natural Protected Areas  
[adelmazo@conanp.gob.mx](mailto:adelmazo@conanp.gob.mx)

