



Vision of the Post-2020 Global Biodiversity Framework from indigenous peoples and local communities of Central, Eastern Europe and Central Asia.

Regional Consultation on the Post-2020 Global Biodiversity Framework for Central and Eastern Europe,

April 16-18, Belgrade, Serbia

Kuluipa Akmatova, RDF

Zsolt Molnár, CER MTA

Polina Shulbaeva, CSIPN



Introductions

- IPLCs make a significant contribution to rational use, protection of biodiversity and maintenance of its viability using TK (ecological tourism, collection of medicinal herbs and berries, processing).
- Traditional knowledge - are assets of the country, profitable for the state and effective in ensuring safety of biodiversity and rational use of natural resources.
- IPLCs - are custodians and practitioners of traditional knowledge, are owners of unique 'secrets' about biodiversity, that is why they should be treated as active partners in implementation of the CBD

Inclusion to the Post 2020

- Initiatives should be centered on the traditional mechanisms of conservation and sustainable use of natural resources, i.s. biocultural approaches to conservation and customary use
- Cross-cutting approach for Traditional Knowledge and Cultural Heritage in the Post 2020 Programs
- Inclusion the CBMIS, creation of TK database increase capacity building for IPLCs, improve transparency and enhance responsibility policy-makers
- Initiatives of the Conservation of genetic diversity
- Conservation of endangered species





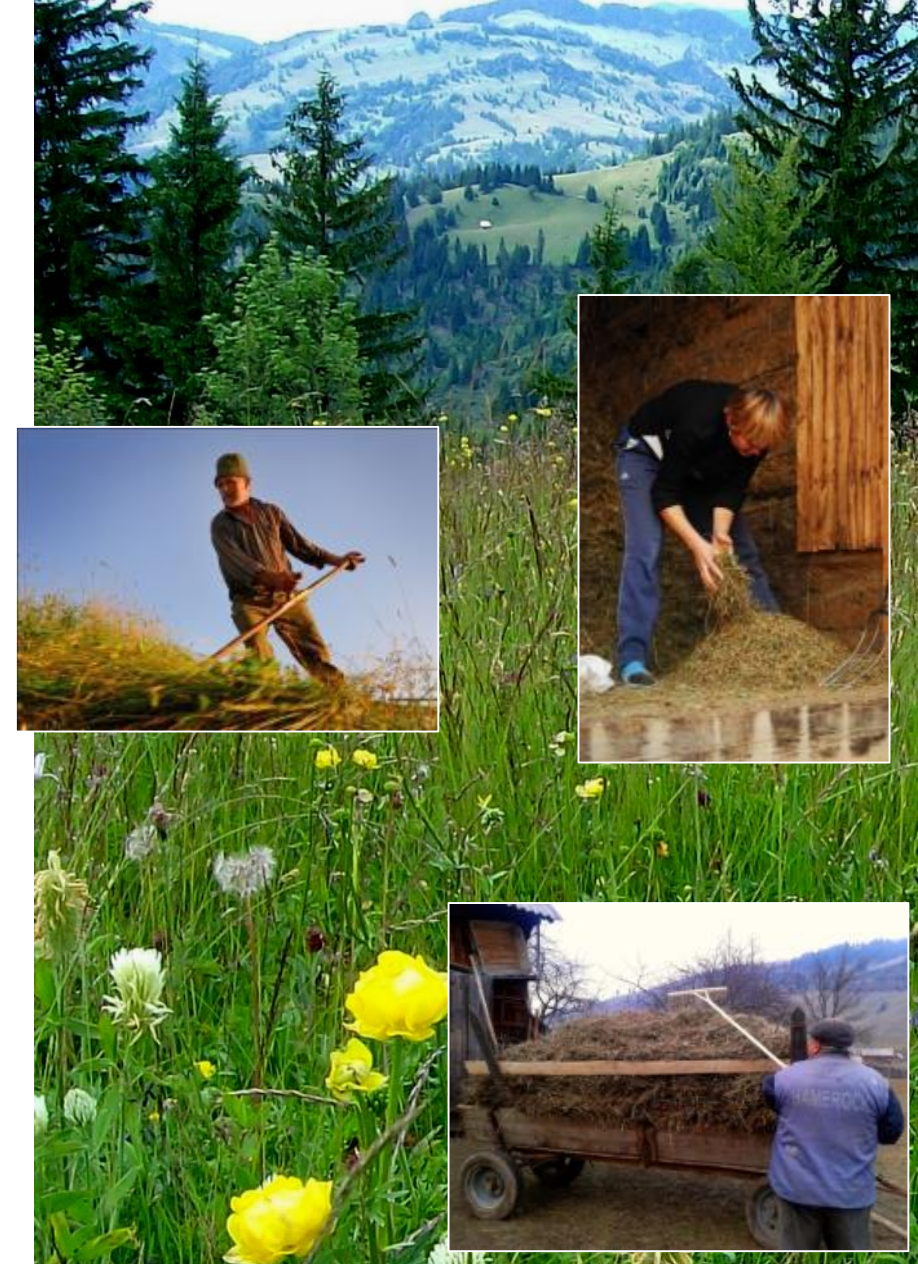
- Participation of Indigenous People and Local Communities should be done not only at the stage of implementation of the goals/strategies/objectives, but also during concept development and consultations.
- Thematic programs should have direct reflection and participation of Indigenous Peoples and Local Communities.
- Recognition of TK of Indigenous Peoples and Local Communities is one of the important indicators of the Sustainable Development Goals and should be basic part of monitoring process in the implementation of the Post-2020 Framework.
- The recognition of contribution of Indigenous Peoples and Local Communities and TK practitioners in sustainable development must be fully reflected in all the thematic work plans on Post 2020



ЧОН-КЕМИН - АК ИЛБИРСТИН МЕКЕНИ!

Traditional practices are locally based, regionally manifested, and thus globally relevant

- Indigenous peoples and local communities often contribute positively to biodiversity and its conservation, but many of such contributions are **unexpected or hidden**
- Traditional management practices and the related traditional ecological knowledge is **still widespread on our region** but are not as well known as those in Arctic or tropical regions
- Traditional practices and knowledge are **increasing valued, supported and adapted in protected areas** in our region
- But: we need **more recognition of holders** of traditional knowledge by scientists, conservationists and decision makers
- More **efficient knowledge co-production** is needed for better evidence-based conservation management and to remove harmful subsidies in the post-2020 period



Hayseed scattering... that enriched our flowery meadows for centuries

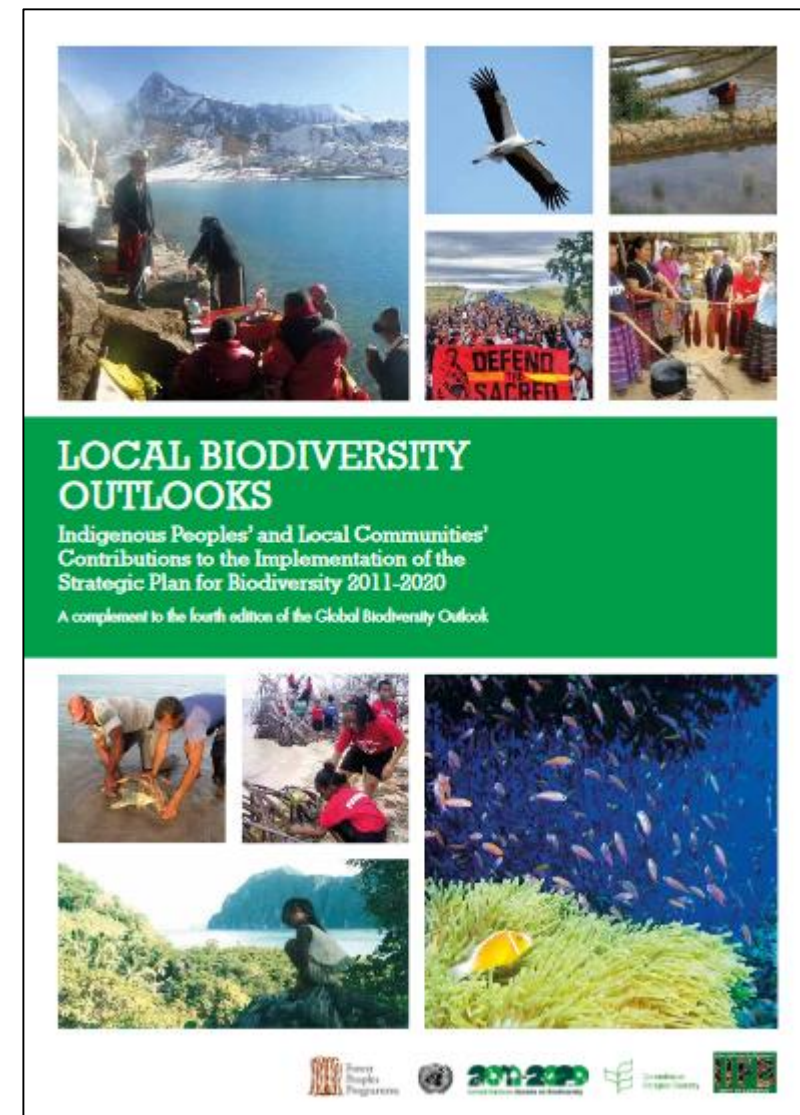
INVITATION TO CONTRIBUTE TO THE LOCAL BIODIVERSITY OUTLOOKS

- Global Biodiversity Outlook (GBO5, 2020)
- Local Biodiversity Outlooks (global, 2020)
- Please send material **after it is launched**.
- **Local Biodiversity Outlooks (for our region)**

Two options:

- Focussing only on Hungary, Romania, and Serbia
- Including also other Balkan countries, Turkey, Ukraine, Moldova ect.
- Please contact Zsolt Molnár if you are interested:

molnar.zsolt@okologia.mta.hu



Nature and Culture as the main scope

- The focus should expand from biodiversity to the deep connections between biological and cultural diversity.
- Inseparable linkages between biological and cultural diversity.
- This needs to include humans as participating in natures' futures, and culture as the transformative element towards living in harmony with nature.



Integrated and holistic approaches

- **Promote inter-cultural dialogue** and give equal importance and application to diverse values, science, and knowledge systems (**taking into account** learning from and building on **IPBES's approach** to diverse knowledge systems).
- The post-2020 biodiversity framework should be in **Full Synergy** with the Sustainable Development Goals (SDGs), human rights instruments, climate commitments, culture and knowledge, health, food and agriculture, science and education and other relevant sectors.
- **Indigenous peoples** and local communities **view the Earth** as a living being to be nurtured **with care and respect**.
- Planning must be **based on the worldview “Good Living”**
 - pursuing to the **balanced relationship between Nature, human-beings and the Universe**.



Values, Behavioral change and Commitments

- To achieve the vision 2050 of “living in harmony with nature”, there is a need for paradigm shift in terms of values at the center/core of society that influence people’s behavior and choices for a transformation towards a responsible and sustainable society.
- Participation of all sectors of the society is needed, including governments and private sector, based on exploring, understanding and reconnecting with cultural values, responsibilities and ethics.
- Engendering respect for cultural diversity within societies.
- Acting together to reduce loss, and to revitalize, biological and cultural diversity, through integrated ecosystem-based and human rights-based governance at multiple scales, from local to global levels.
- Recognition, and support for, diverse values and knowledge systems and for indigenous peoples and local communities’ initiatives and contributions towards healthy and sustainable ecosystems and societies.



IPLC perspectives and participation in the overall CBD agenda



- Imperative to mainstream IPLC perspectives and participation in the overall CBD agenda, in a manner that compliments the **establishment of a Permanent Subsidiary Body**.
- The mandate for this proposed **Permanent Body in the Post 2020** should build upon the existing mandate of the working group on article 8 (j).
- On the **following principles** in the development of the New Proposed Body:
 1. Full and effective participation.
 2. Equal status with parties, including in leadership roles.
 3. Self-selection of IPLC representatives in accordance with IPLC procedures.
 4. Adequate funding from the Secretariat and Voluntary Contributions to enable its functions.
 5. Open-ended and inclusive permanent body, beyond the limited scope of an “expert” group.
 6. Support the objectives of a learning platform.
 7. Inclusion of fundamental ethical standards (eg, Knowledge Security, FPIC, and rights-based approach etc).

Key cross-cutting points should be used when developing the content of the Post-2020 Framework.

✓ Rights based approach	✓ Equity	✓ Resource mobilization
✓ Full and Effective participation	✓ Partnership	✓ Indigenous peoples and local communities' contributions and CBMIS
✓ Inter-generational responsibility	✓ Gender and youth	✓ Governance: transparency, accountability, rule of law, inclusion and compliance, subsidiarity (devolution), customary governance practices

Post 2020 Global Biodiversity Framework

- **UNDRIP as a fundamental basis** to work to achieve the CBD targets.
- **Participation of regional representatives of IPLC as partners** in the work of Post 2020, including participation at the **meetings of the Open-ended WG PGBF**
- **The new** Institutional arrangements are to be a **Permanent Open-ended and Inclusive Body**.
- **A Compliance Mechanism** should be developed to ensure that the convention gets implemented. A mechanism similar to the Universal Periodic Review.
- The **“Ways and means of implementation”** section should be moved **at the top** of the new Post 2020 Framework so that implementation receives a much greater attention.
- **Use existing governance structures within IPLCs** following core principles of integrity, inclusion, deliberation, and influence.
- **Adequate Secretariat funding** in addition to **voluntary contributions**.
- **IPLC must become direct participants of the Different thematic programs of work.**





Thank you! Спасибо!