

# Community-based forest and land use monitoring in Wapichan territory, Guyana

South Rupununi District Council  
Equator Prize Winner 2015

Chief Tony James

Montevideo, May 15, 2019




# Wapichan Territory

## Wapichan People






# Monitoring approaches and tools:

- ▶ Use of smart phones: GPS, camera, video, sound recording
  - ▶ Customised monitoring survey form: Geo-ODK Collect
  - ▶ Field visits by Wapichan monitoring teams
  - ▶ Flights by community UAV called “*Kowadad*”
  - ▶ Use of publicly available satellite images
  - ▶ Off line ‘map filter’ platform to show info on Wapichan land use map (under test)
  - ▶ Plan to host information on Wapichan web site (to launch in 2016)
- 



# Governance and organisation

- ▶ SCPDA monitoring work is done in the service of our Village Councils
  - ▶ Land and forest monitoring reports are submitted to the South Central and South Rupununi District Toshaos Council (DTC)
  - ▶ Information is used to take collective decisions and agree actions to address threats to our forest and livelihood resources
- 



## Forest Monitoring trips: Kwitaro River, 2015





# Smart phones





# Community drone



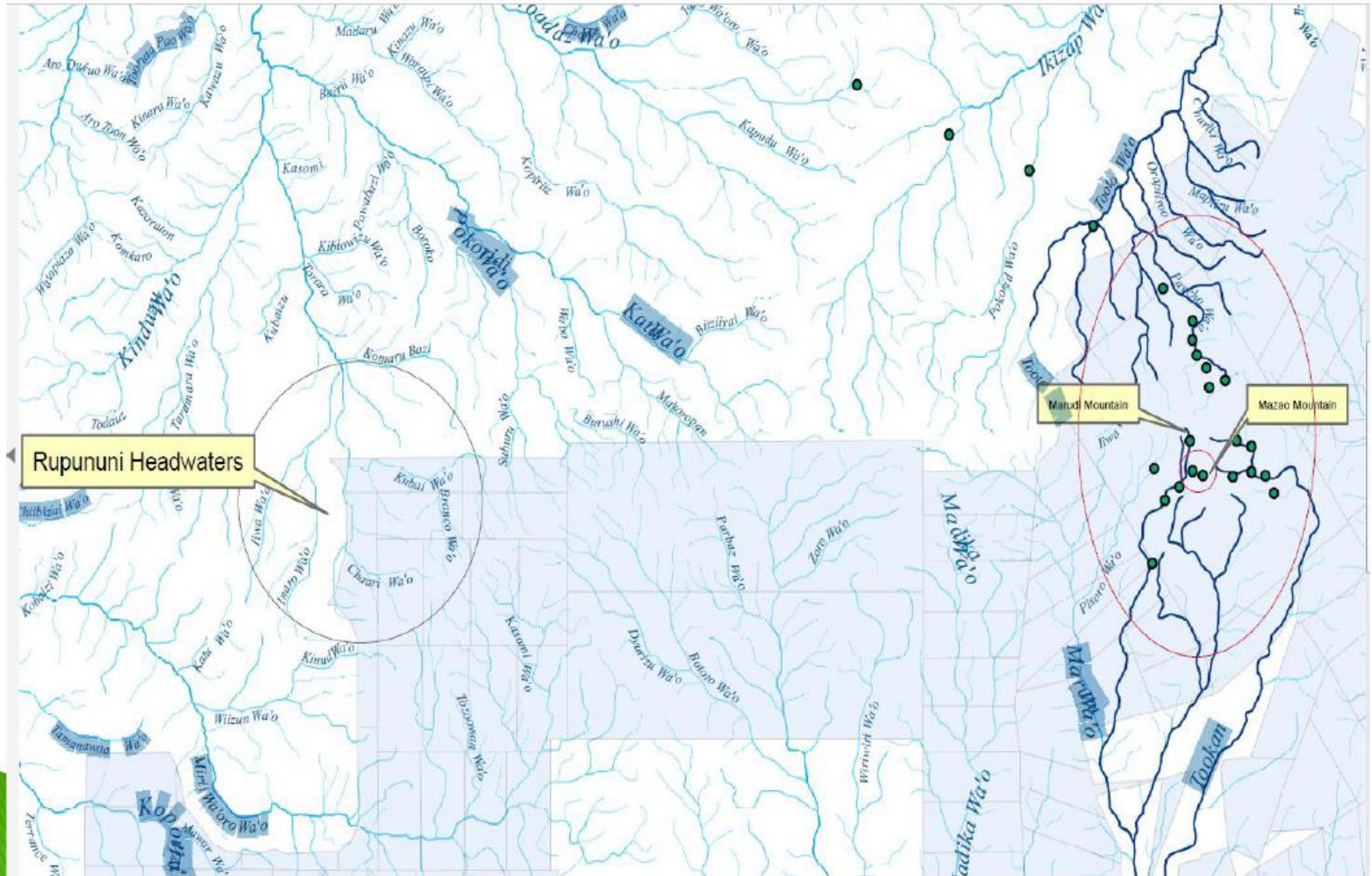


# Mobile drone control unit





# Monitoring mining encroachment, Oct 2015





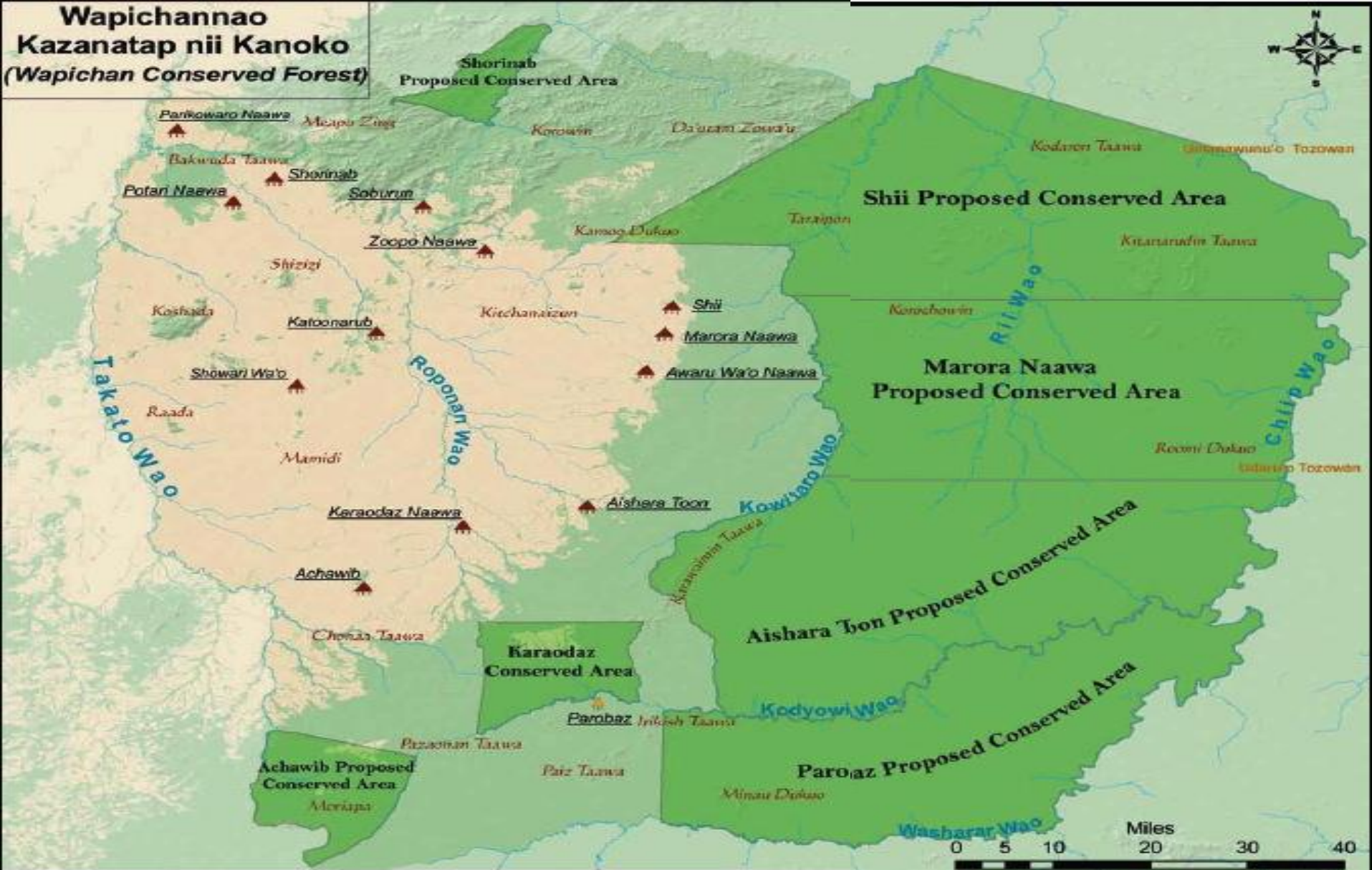




# Mobile mapping unit. October 2015



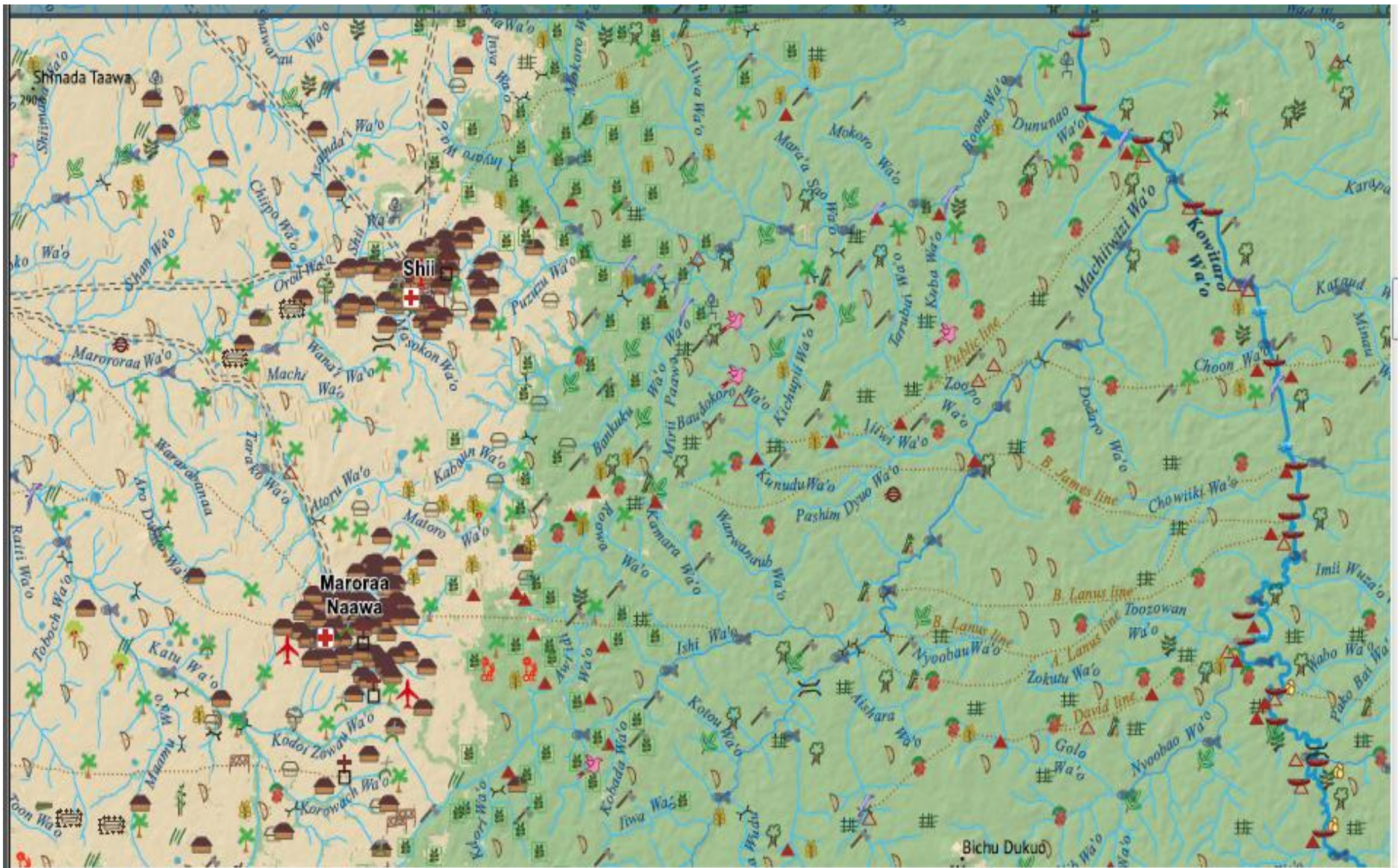




**Wapichan conserved forest**



This map illustrates the Shilluk region, characterized by a high density of village names, many of which are followed by 'Wa'o'. Major settlements like Shinada Taawa, Maroraa Naawa, and Shil are marked with red crosses. The map also shows a network of rivers and administrative boundaries, including the B. James line, B. Lams line, and David line. Various symbols represent different types of geographical features and infrastructure.





# Sharing monitoring information with villagers and community leaders





# Achievements

- **Major achievements** re SRDC/SCPDA slowing illegal crossings of rustlers and smugglers and illegal game hunters (sadly has not slowed miners!) – in collaboration with GDF, the Lethem police and Brazilian authorities (IBAMA etc) –tell the positive stories and successes
- Use of trained monitors in gathering land tenure evidence for territorial claim and formal land talks with GoG (visits to Reewa and Essequibo etc to obtain info on traditional occupation and customary tenure)
- High level meetings with Head of State in March 2018 (meeting in Aishalton) > where he requested to see SRDC evidence from monitoring work and damage of Marudi mining field and illegal resource use
- Public sharing of a SRDC community monitoring report on Marudi mining development with President Granger in October 2018
- New plans to vamp up the drone work – get it working real good + revamp web site – so it is more agile and responsive + boost internet signals + continue strengthening monitoring decision and governance system so it is serving + backing up the local info with developing legal indicators for compliance with IP rights and applicable national **\*and\*** international law





We love our beautiful land that we call  
*Wapichan wiizi*

