

LOCAL AND SUBNATIONAL ACTION TOWARDS THE POST-2020 GLOBAL BIODIVERSITY FRAMEWORK

Rodrigo Perpétuo | Executive Secretary
ICLEI South America
GRULAC Regional Consultation
Montevideo, 2019

ABOUT ICLEI

Serving our network from 22 offices around the world



ABOUT ICLEI: THE FIVE PATHWAYS



LOW EMISSION
DEVELOPMENT



NATURE-BASED
DEVELOPMENT



EQUITABLE
AND PEOPLE-
CENTERED
DEVELOPMENT



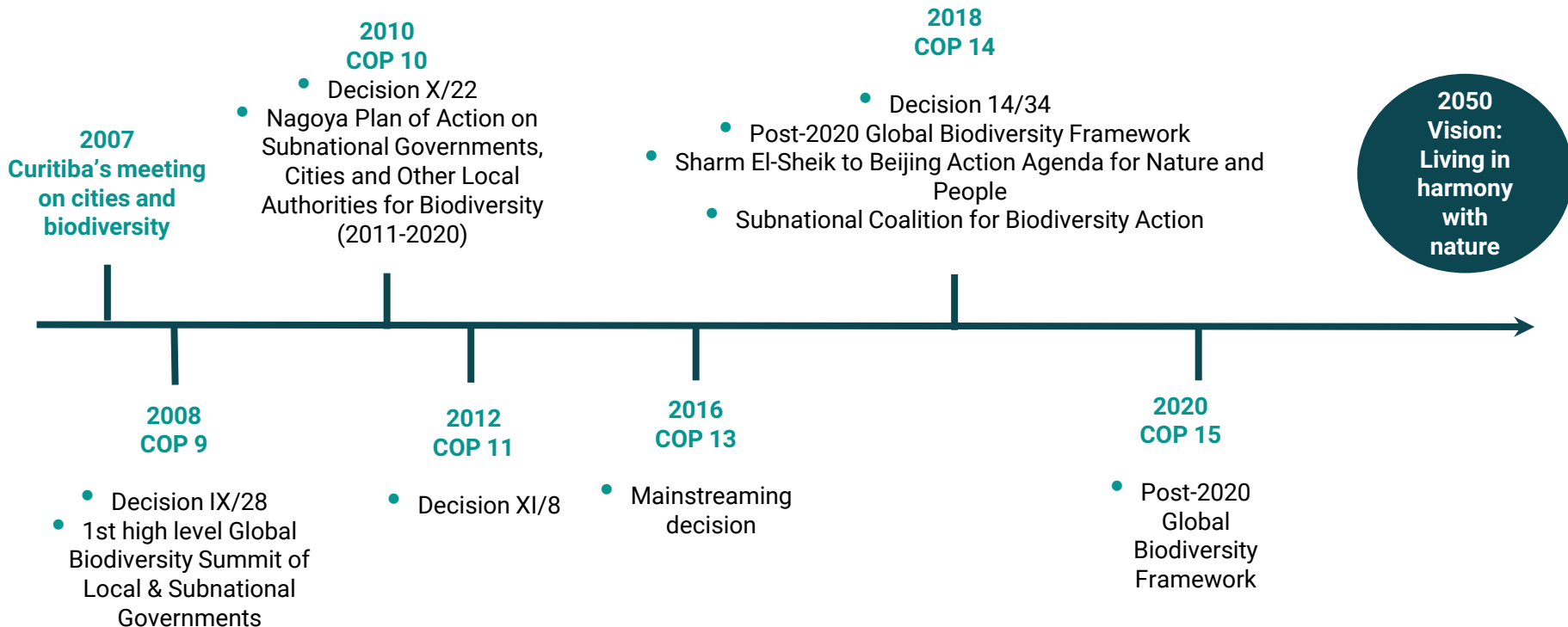
RESILIENT
DEVELOPMENT



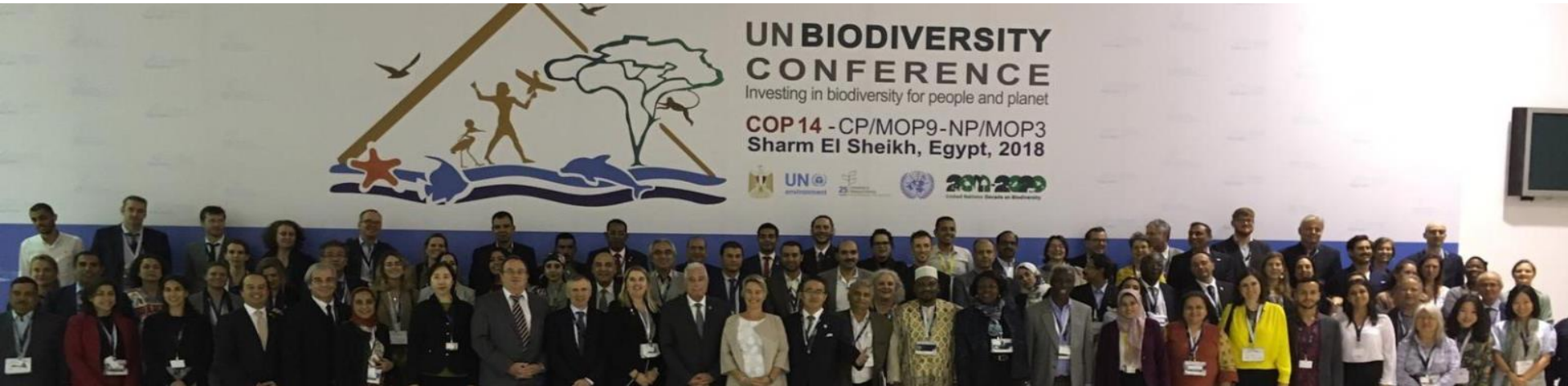
CIRCULAR
DEVELOPMENT

The **FIVE ICLEI PATHWAYS** towards low emission, nature-based, equitable, resilient and circular development are designed to create **SYSTEMIC CHANGE**. The pathways are a framework for designing **INTEGRATED SOLUTIONS** that balance the patterns of human life and the built and natural environments.

LOCAL ACTION: FROM NAGOYA TO BEIJING



LOCAL ACTION: FROM NAGOYA TO BEIJING



ICLEI

nrg4SD

EUR
CoR

GoLS

INTERACT-Bio



INTERACT-Bio
Ação Integrada pela Biodiversidade

Project implemented by



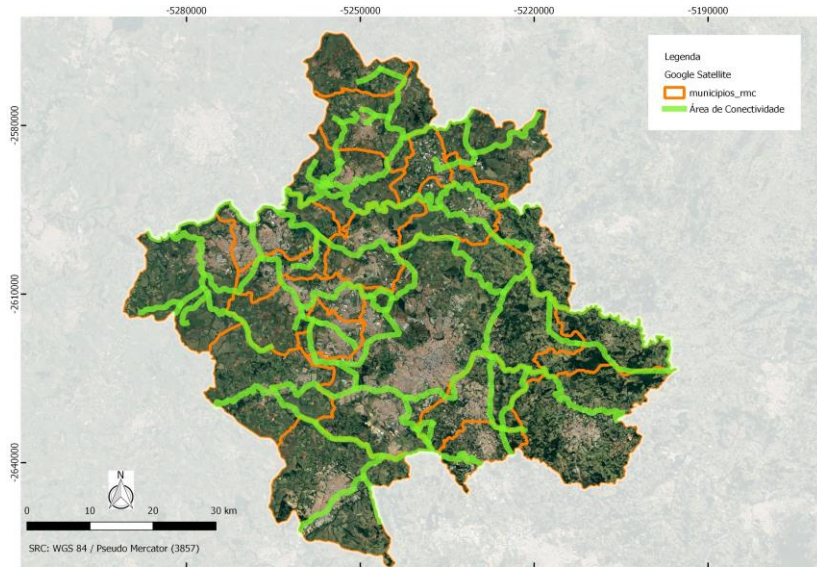
Supported by:



Federal Ministry
for the Environment, Nature Conservation
and Nuclear Safety

based on a decision of the German Bundestag

INTERACT-Bio: Campinas



The Proposal of a **Connectivity Area** has been designed through the Project to foster **nature conservation, maintenance of ecological processes** and **economic, social and cultural prosperity**, as well as to increase **resilience to climate change**.

It will connect ecologically relevant areas, maintaining or restoring landscape connectivity and facilitating gene flows. It will also promote **alternatives for the adoption of low-impact land use activities**, develop **incentives to green economy** and will **bring people closer through nature-based solutions and urban green-blue infrastructures**, such as linear parks and greenways.

INTERACT-Bio: Belo Horizonte

As transitional spaces between densely urbanized areas, Protected Areas - notably those of integral protection - and crops, the **regional Green-Blue Network** can play **buffer functions**, contributing to **mitigation of environmental impacts** of different types, such as heat islands, air pollution, deregulations at the hydrological cycle.

The Project is supporting the implementation of this Green-Blue Network, promoting **agroecological practices** and the implantation of **agroforestry systems**, with a special concern to the **enhancement of ecosystem services provision critical for the maintenance of regional agricultural, social and biological diversity**.



INTERACT-Bio: Londrina

- The State Secretariat of Urban Development of Paraná (where Londrina is located) is elaborating, for the first time, its **Integrated Urban Development Plan**;
- The main challenges of the region are **water-related extreme events**, with a special concern with the occupations in valley bottoms, supply sources and ecological corridors;
- The Project is technically contributing with **informed suggestions** towards the **incorporation of Ecosystem Services as strategic variables** to be considered during the metropolitan environmental planning, due to their potential to integrate the municipal territories and face these challenges;
- The Project will support an **Evaluation and Propositional Diagnosis of Ecosystem Services**, indicating **windows of opportunity** for the **promotion of nature-based urban development**. It will propose the **revision of instruments of municipal, territorial and budgetary planning**, indicating ways to **enhance intersectoriality**, and showing that it is possible to **innovate within the given conjunctures**.

A MODEL FOR BIODIVERSITY MAINSTREAMING

With INTERACT-Bio Project ICLEI has developed a **simple yet practical** and **effective** model for **mainstreaming biodiversity** at the local and subnational levels of government. The adopted approach, applied in city-regions of Brazil, India and Tanzania, can be scaled worldwide through the:

- Integration of biodiversity considerations into urban planning instruments, such as Master Plans;
- Promotion of ecosystem-based land use planning and decision-making processes;
- Development of Local Biodiversity Strategies & Action Plans (LBSAPs) aligned with, and complementary to NBSAPs.

TOWARDS A POST-2020 GLOBAL BIODIVERSITY FRAMEWORK

- Recognition of the mandates and competencies of local and subnational governments through the incorporation of the **principles of multilevel governance** and cooperation and the need for **vertical integration**;
- Local action must be clearly articulated **and mainstreamed** throughout the post-2020 global biodiversity framework;
- Involving local and subnational governments **directly in national target setting** to ensure buy-in and achievement on the ground;
- Forging stronger and more explicit **alignment and synergies between all relevant global agreements** (SDGs, UNFCCC, NUA, Sendai Framework)

Why Local Governments are key for the post 2020 agenda

- Proximity to the population / local communities (potentialize policies on protection, conservation and engagement)
- Competences to legislate on land use;
- Capacity to influence local and global economy and trends;

But:

Lack of capacity on the political and technical level (distance and desingagement from the biodiversity agenda);

Lack of capacity to formulate policies and projects which takes into consideration the Biodiversity agenda;

Lack of financial resources to adress the Biodiversity agenda;

CONTACT US

ICLEI South America

Marquês de Itu, n° 70 – 14th floor

São Paulo, SP, Brazil

+55 11 5084-3079 / 5084-3082

rodrigo.perpetuo@iclei.org



sams.iclei.org



[/icleiamericadosul](https://www.facebook.com/icleiamericadosul)



[@ICLEI_SAMS](https://twitter.com/ICLEI_SAMS)

