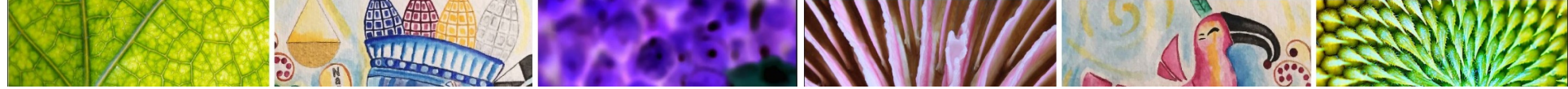


# Assessment and review of the Protocol

## General conclusions for capacity-building

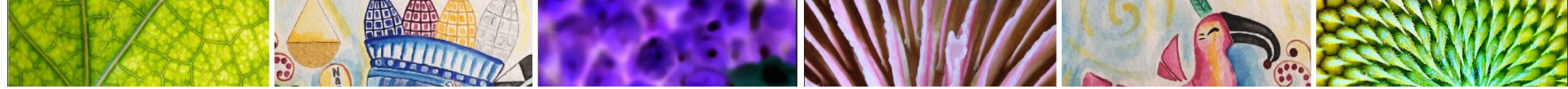
- **Early stage:** many countries still need to adopt ABS measures and establish institutional structures
- Support to the **development of ABS measures** is a priority
- **General capacity-building and awareness-raising** of institutions, relevant stakeholders and IPLCs is still required
- Developing countries and countries with economies in transition rely heavily on **projects and initiatives** to make progress in implementation.
  - Need for **financial resources**



# Assessment and review of the Protocol

## Priorities for further work (NP-3/1)

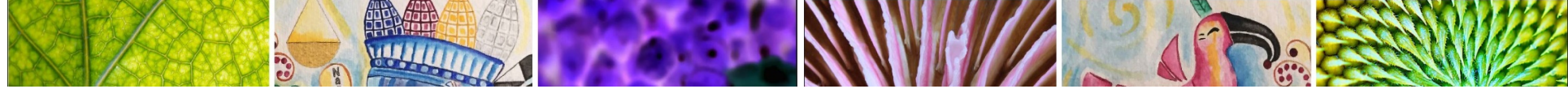
- Develop ABS legislation and regulatory requirements
- Enhance implementation by Parties
  - Of the provisions on compliance with domestic ABS legislation
  - Monitoring the utilization of genetic resources, including the designation of checkpoints
  - Of provisions related to IPLCs (Article 5, 6, 7 and 12)
- Support the full and effective participation of IPLCs by raising their awareness and capacity on ABS and supporting the development of community protocols, MAT and model contractual clauses
- Raise awareness among relevant stakeholders and encourage their participation in the implementation of the Protocol



# Assessment and review of the Protocol

## Priority: ABS measures

- Challenges:
  - Cross-cutting nature of the Protocol requires:
    - the participation IPLCs and relevant stakeholders (e.g. different business sectors and the scientific community)
    - coordination among different institutions and ministries (e.g. science and education, agriculture, trade, intellectual property).
  - Legislative process is time-consuming and challenging.
    - Developing ABS measures that support benefit-sharing while avoiding unnecessary complexity and with limited human resources
  - Uncertainty with shared genetic resources and ATK

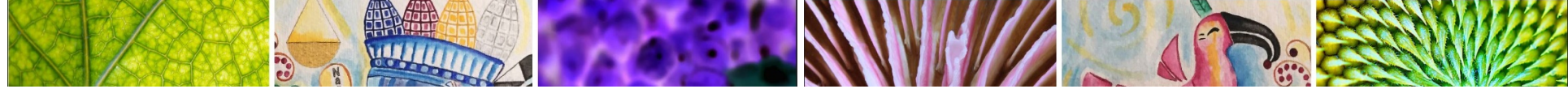


# Assessment and review of the Protocol

## Priority: ABS measures

Capacity-building initiatives could support:

- mechanisms to facilitate coordination and participation of different groups and institutions
  - special consideration under Article 8 of the Protocol and relevant work undertaken by other international organisations.
- development of interim measures
- regional approaches to support harmonized implementation of the Protocol
- Information-sharing on implementation of transboundary cooperation (Article 11 of the Protocol)

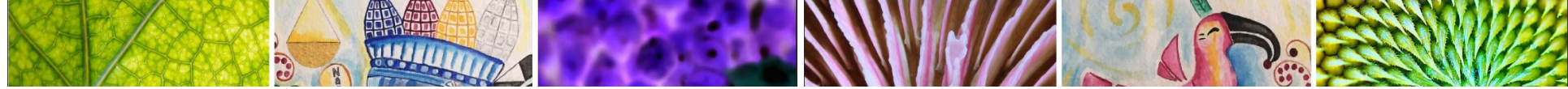


# Assessment and review of the Protocol

## Priorities: compliance and monitoring

### Challenges:

- Not all countries have adopted measures as users of genetic resources
  - Compliance with domestic legislation or regulatory requirements (Articles 15 and 16).
- Lack of understanding of the system for monitoring the utilization of GR through the ABS-CH
  - Checkpoints: functions and options for designation
- Publishing information in the ABS-CH is key to facilitate the monitoring system



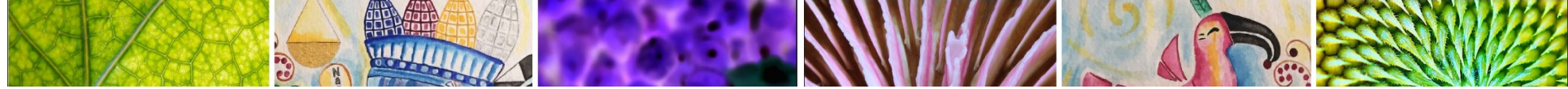
# Assessment and review of the Protocol

## Priorities: compliance and monitoring

Capacity-building initiatives could support:

- Building capacity on compliance and monitoring the use of GR, including checkpoints
- Development of online permitting-systems including interoperability feature with the ABS-CH
- Parties to publish information in the ABS-CH

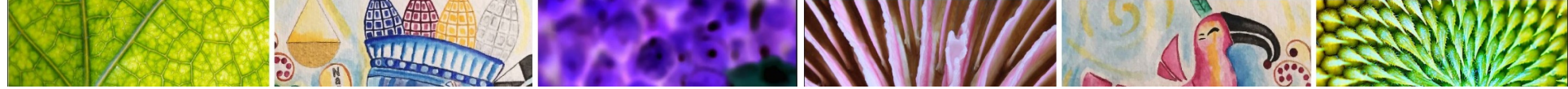




# Assessment and review of the Protocol

## Priority: IPLCs

- Challenges:
  - determining how the concept of “IPLCs” applies at the national level;
  - clarifying the rights of indigenous peoples and local communities over genetic resources and/or traditional knowledge associated with genetic resources;
  - identifying the different groups of indigenous peoples and local communities and understanding the way they are organized;
  - linking traditional knowledge with the holder/s of such knowledge.



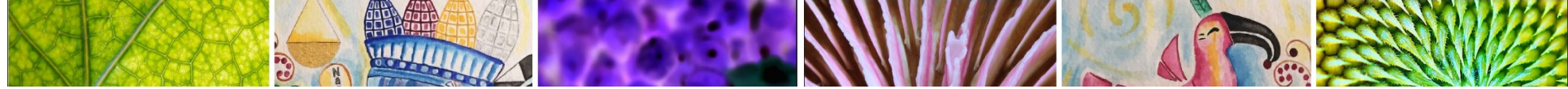
# Assessment and review of the Protocol

## Priority: IPLCs

Capacity-building initiatives could support:

- The capacity of Parties and IPLCs
- National mechanisms for the participation of IPLCs
- Coordination and institution building within and among IPLCs
- IPLCs in developing MAT, community protocols and model contractual clauses

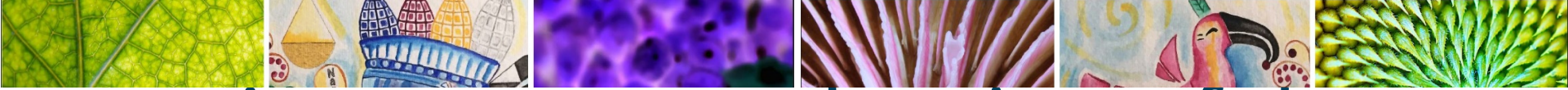




# Assessment and review of the Protocol

## Other areas for capacity-building

- Strategic communication to enhance awareness about the Protocol;
- Negotiation of MAT, understanding the value of GR and promotion of partnerships and technology transfer
- Publication of information in the ABS-CH



# Assessment and review of the Protocol Opportunities

- Wealth of information:
  - National reports and the ABS Clearing-House
  - Existing tools and resources (e.g. guidelines, capacity-building materials)
  - Existing experience in implementation