

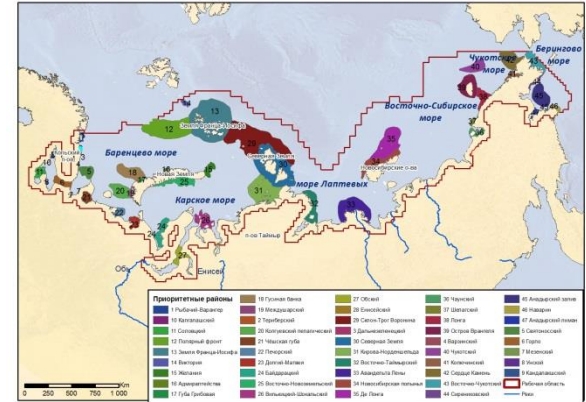
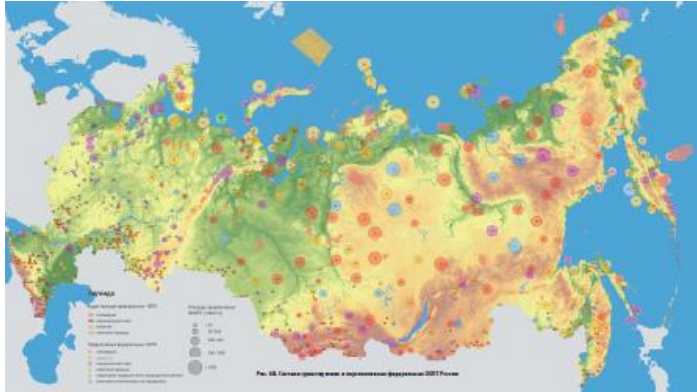
# Protected Areas & OECMs in Russia

Irina Onufrenya

Montreal, Canada ,December 1-3 2019

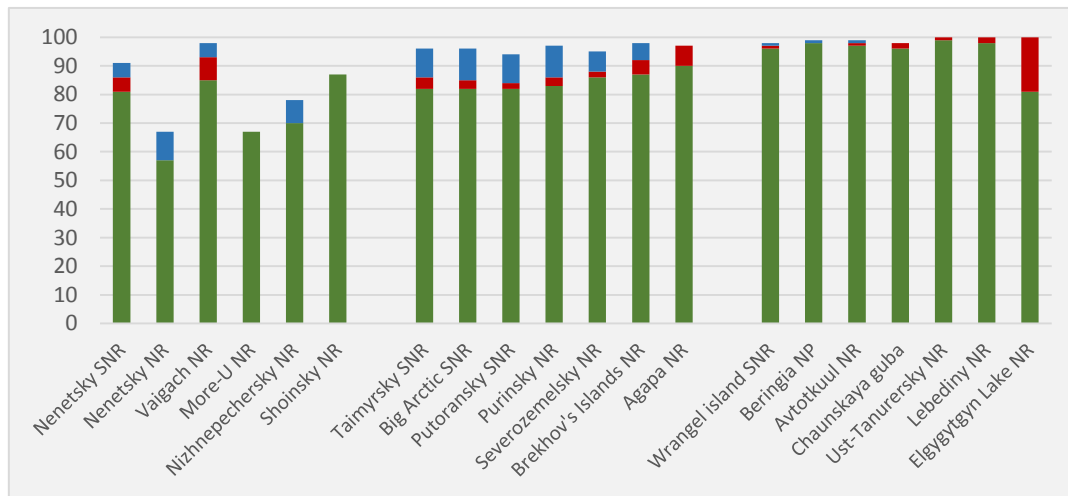


# GAP analysis and effectiveness of Protected Areas in Russia



Terrestrial analysis was done in 2009

Marine analysis for the Arctic seas was done in 2016



■ - current effectiveness
 ■ - potential effectiveness increasing by management improvement
 ■ - potential effectiveness increasing by removal of all factors

Assessments of the effectiveness of Protected Areas at National and Regional levels are repeated.

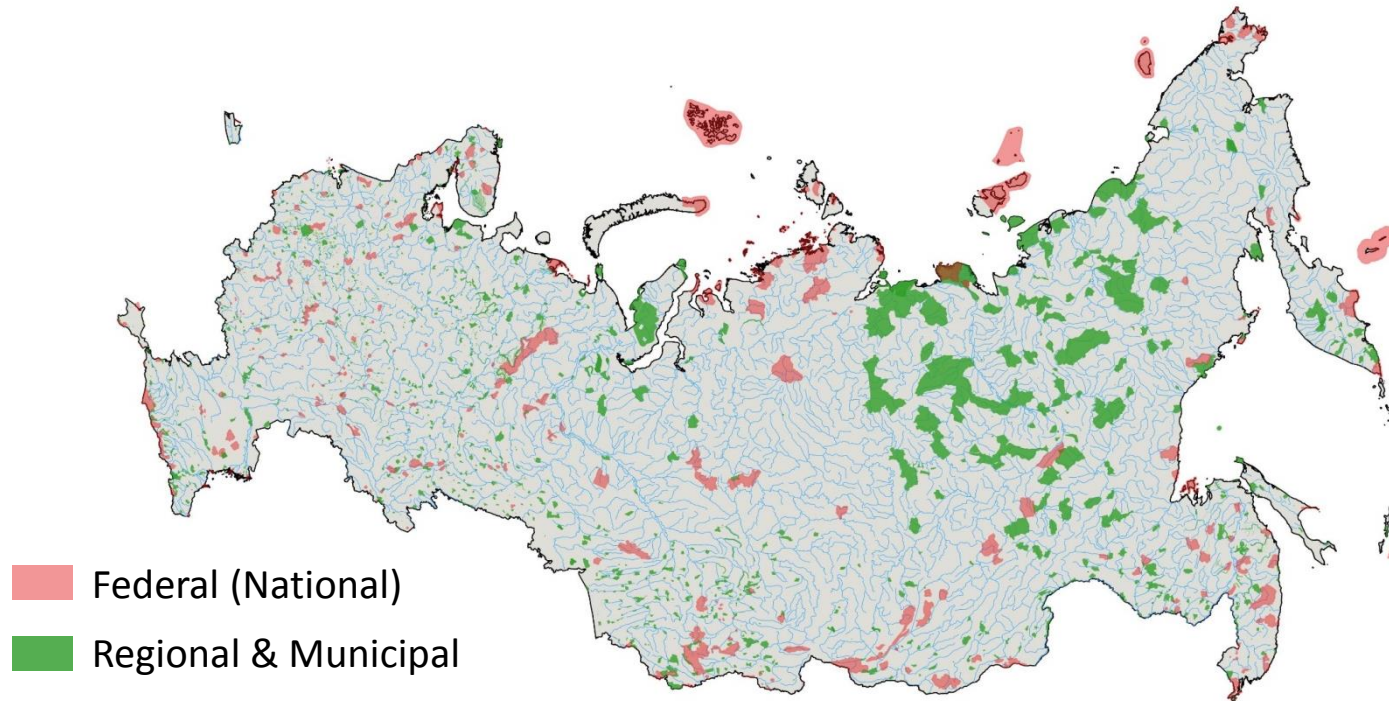


# Protected Areas

---

**11.7%** of Russia , more than **13,000** PAs, total area **240 million ha**

*(area of Germany, Switzerland, Italy, Belgium, Netherlands, Sweden, Norway, United Kingdom together)*

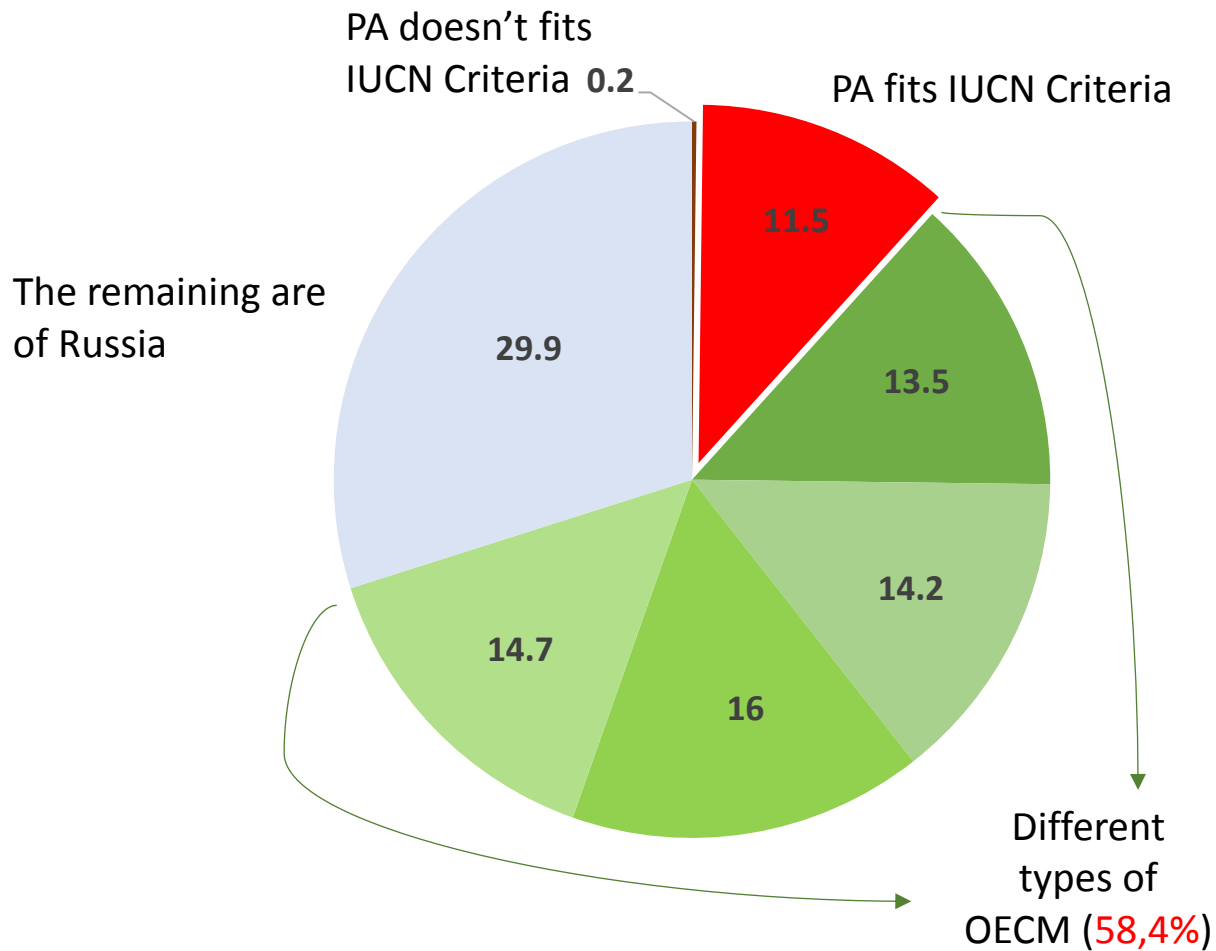


All Protected Areas are managed by the state at the National, Regional or Local levels.

# Terrestrial PAs & OECMs in Russia

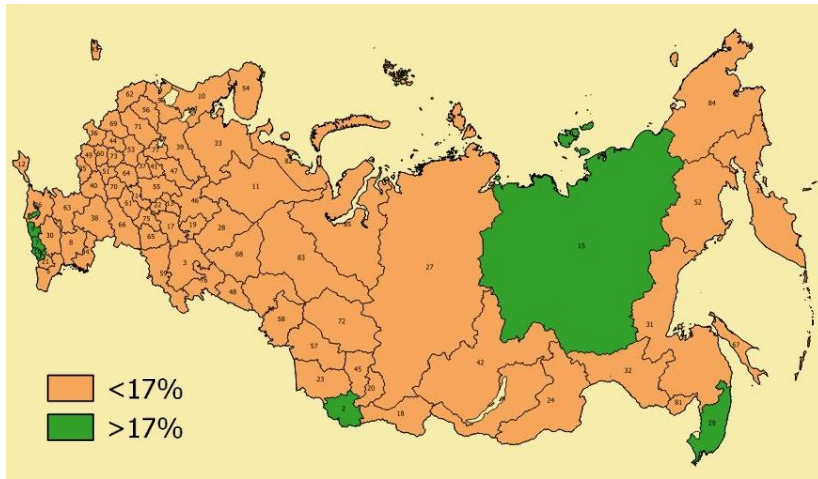


# Protected Areas & OECMs



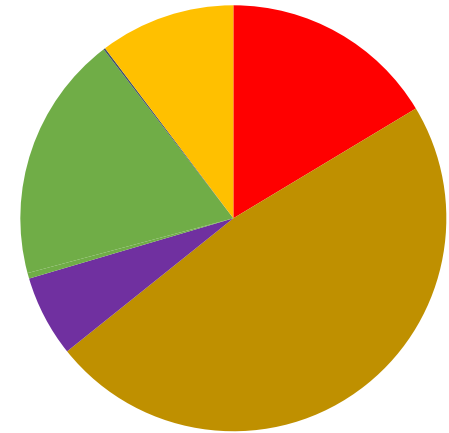


# Terrestrial PAs & OECMs into administrative regions

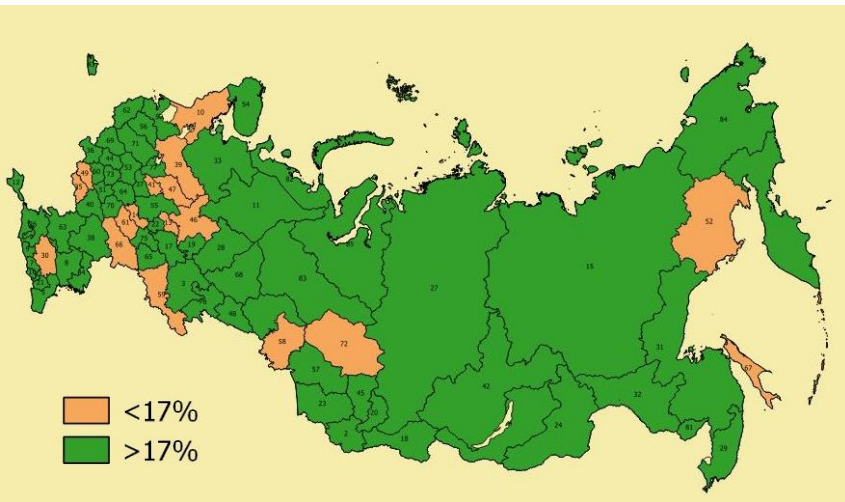


PA only

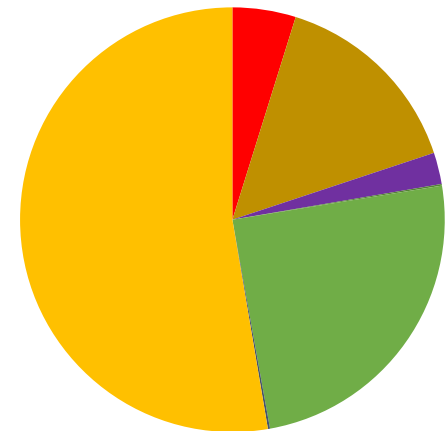
IUCN Categories



Ia Ib II III IV V VI

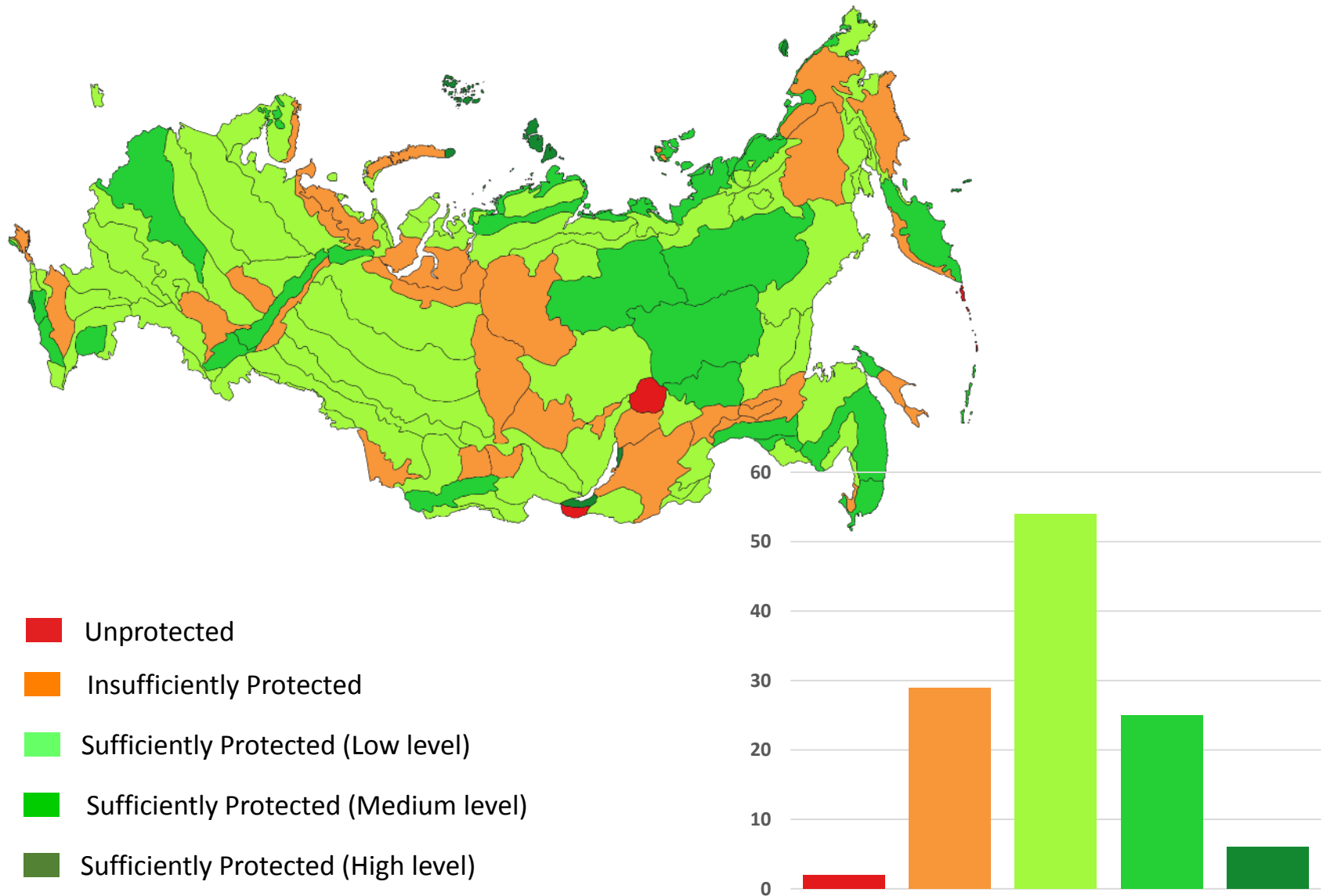


PA & OECM

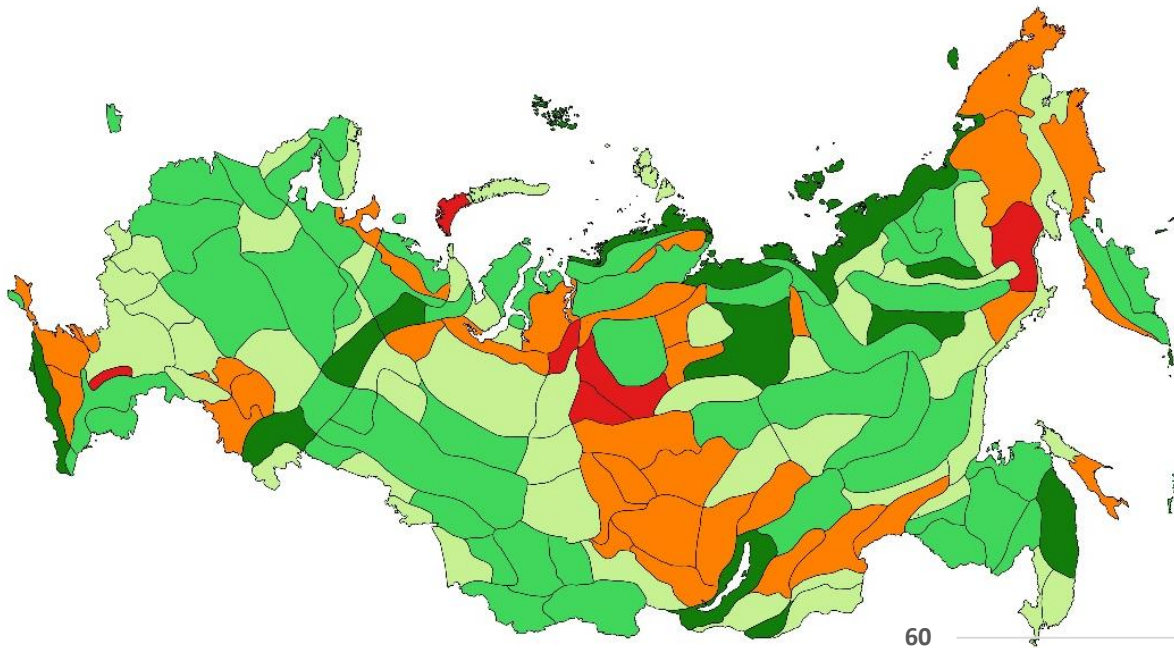


Ia Ib II III IV V VI

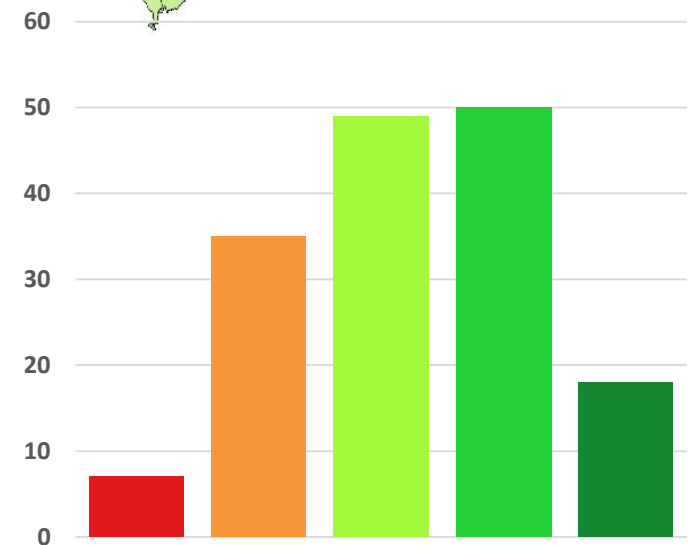
# Representativeness of Biomes geographical variations



# Representativeness of Geographical Provinces



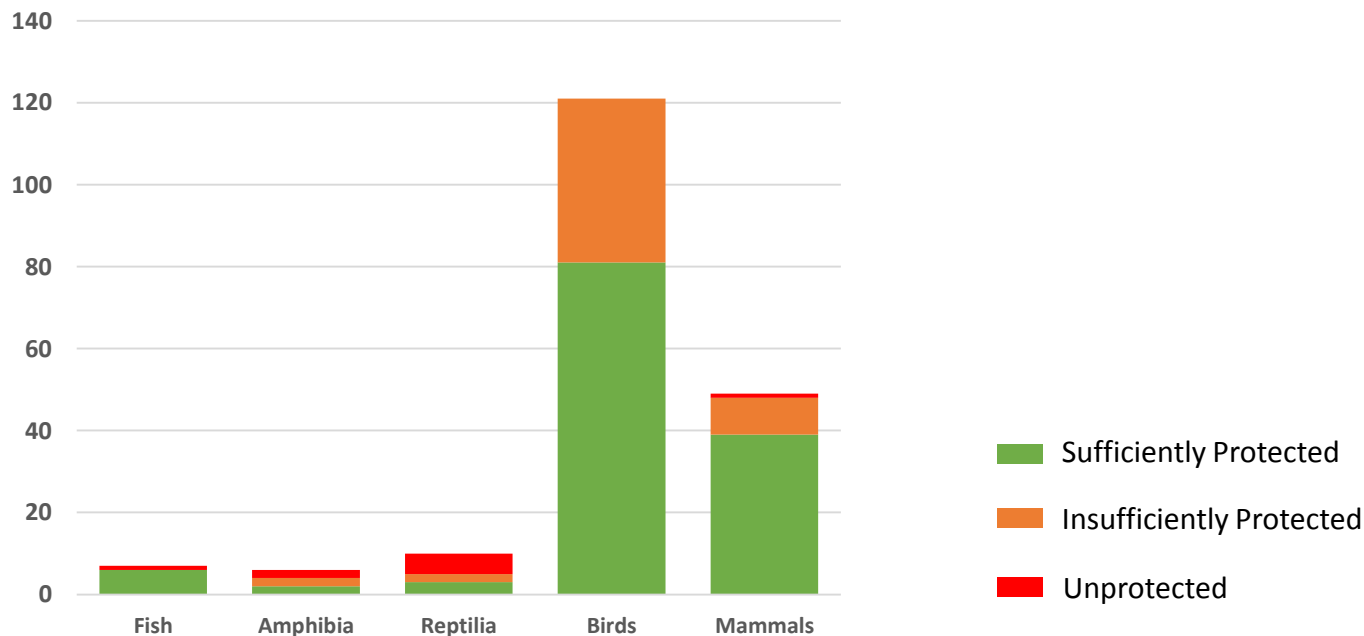
- Unprotected
- Insufficiently Protected
- Sufficiently Protected (Low level)
- Sufficiently Protected (Medium level)
- Sufficiently Protected (High level)



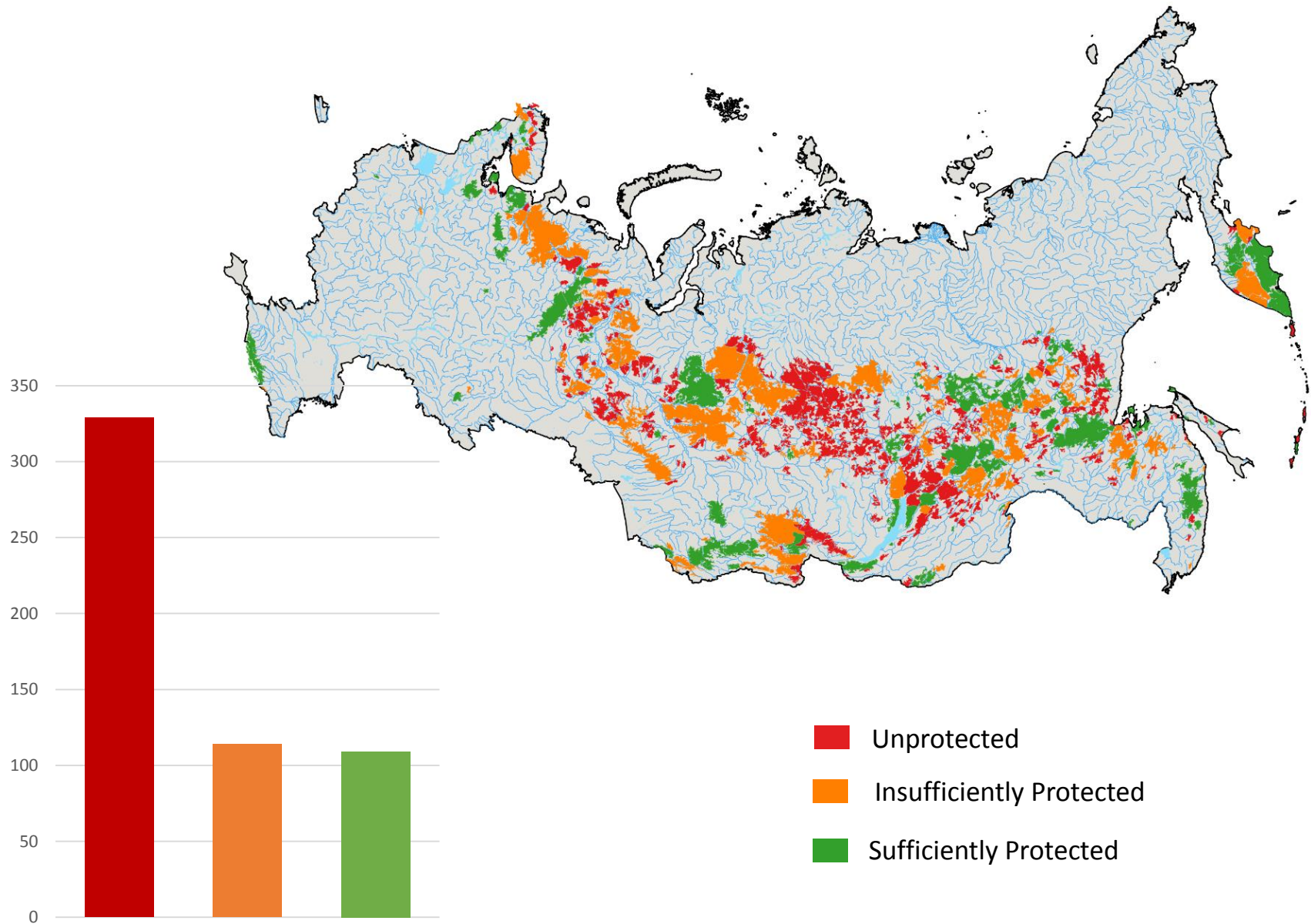


# Representativeness for conservation of Russian Red Data Book vertebrate animals

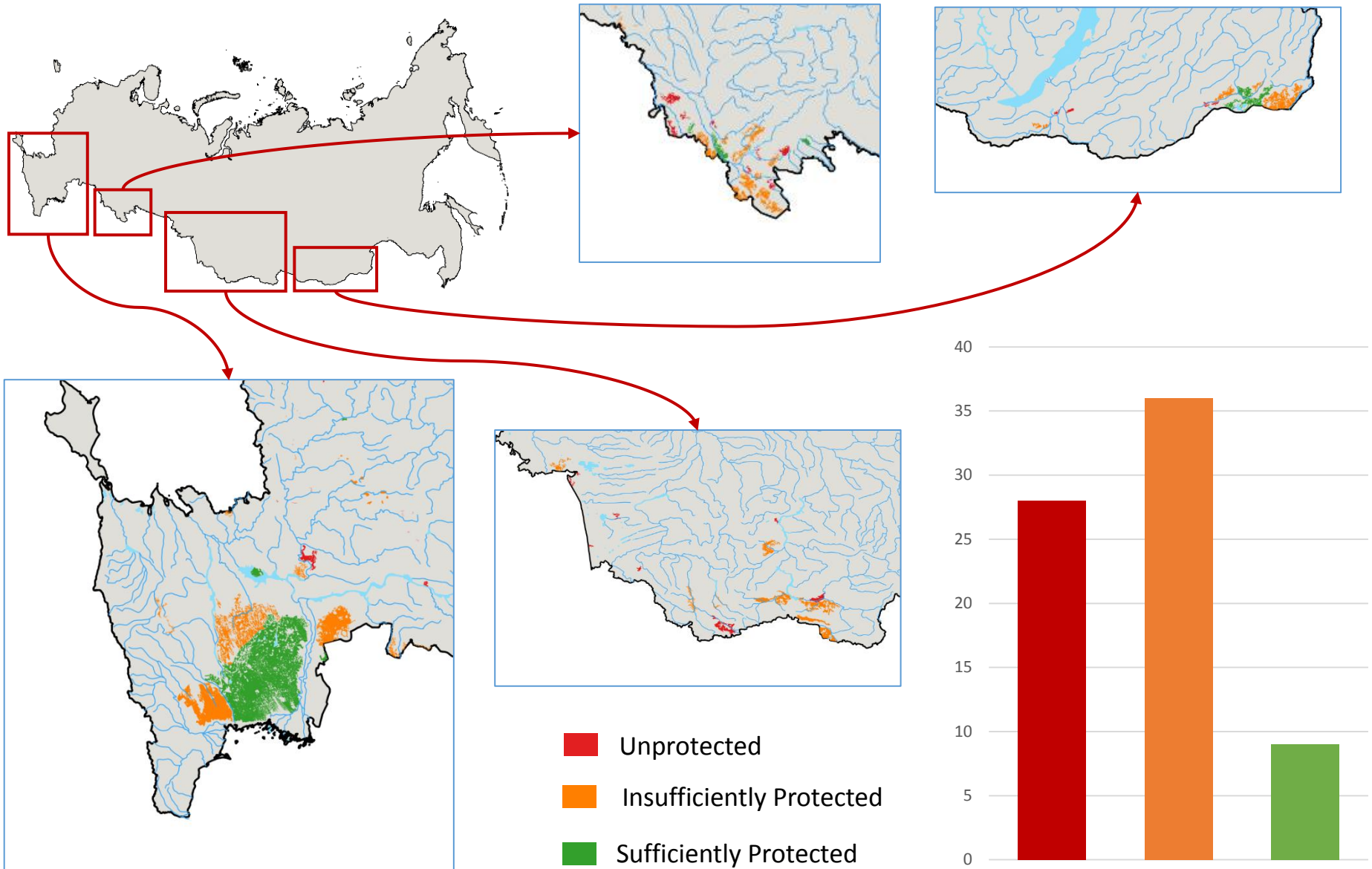
Taxons	Required PA as conservation measures	Protected on PA	Unprotected Or Insufficiently Protected
Freshwater Fish	7	86%	1 (14%)
Amphibia	6	67%	4 (67%)
Reptilia	10	50%	7 (70%)
Birds	121	100%	40 (33%)
Mammals	49	98%	10 (20%)
<b>Total</b>	<b>193</b>	<b>94%</b>	<b>62 (32%)</b>



# Representativeness of the intact forests



# Representativeness of the steppe



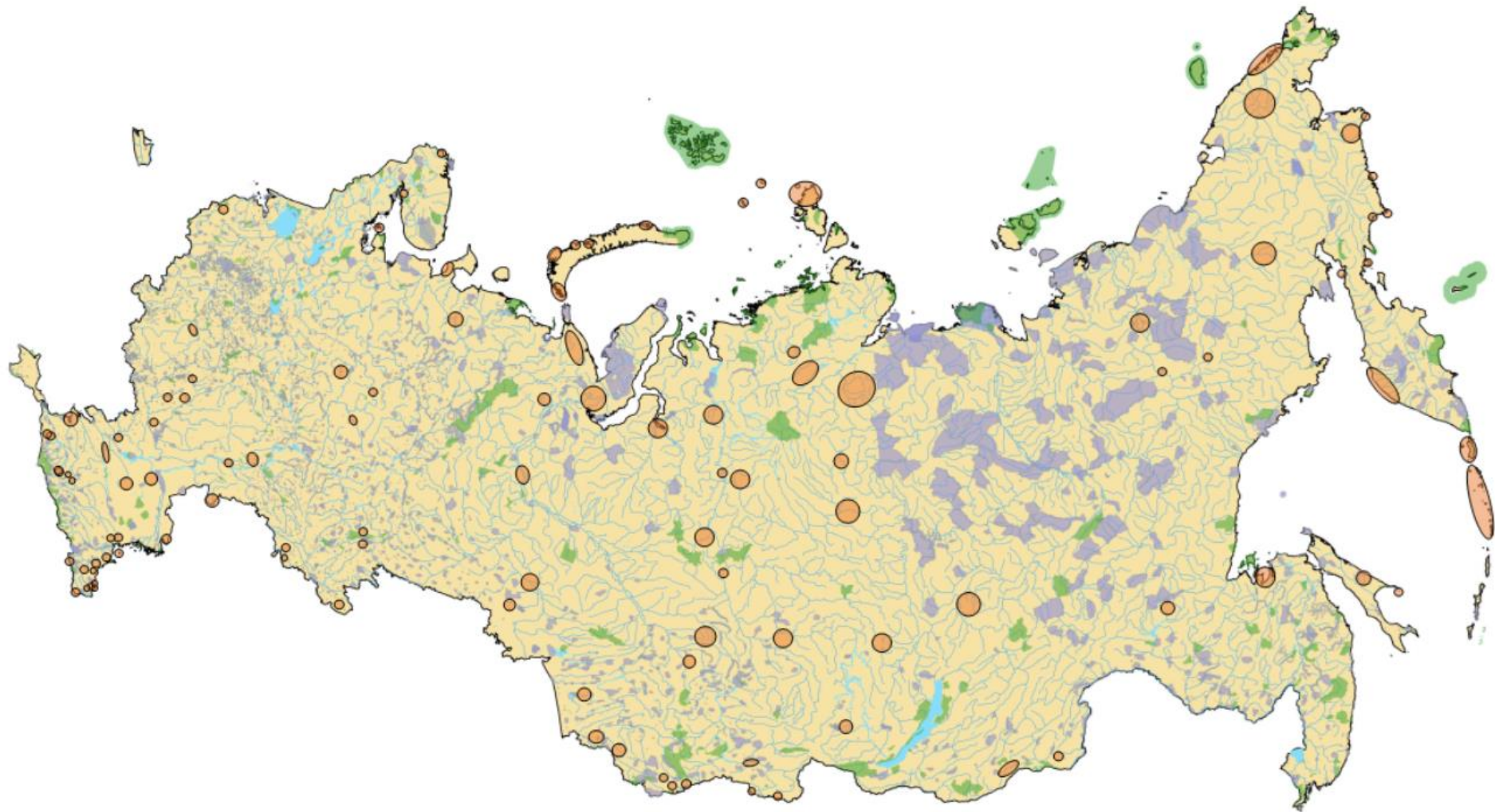


# Representativeness / Completeness of Russian PA Network

Protected Objects	Number of Units	Representativeness/ Completeness Of PA Network
WWF Ecoregions	48	95%
Biomes Geographical variation	117	86%
Geographical Provinces	158	85%
Terrestrial Breeding Vertebrate Fauna	990	100%
Terrestrial Vertebrate Animals of Red Data Book	193	81%
Intact Forest massive	526	30%
Intact steppe massive	73	36%
Wetlands of International Importance	215	43%
Important Bird Areas	967	29%
Rare plant communities of international Importance	97	43%

## Territories requiring the creation of new protected areas

---



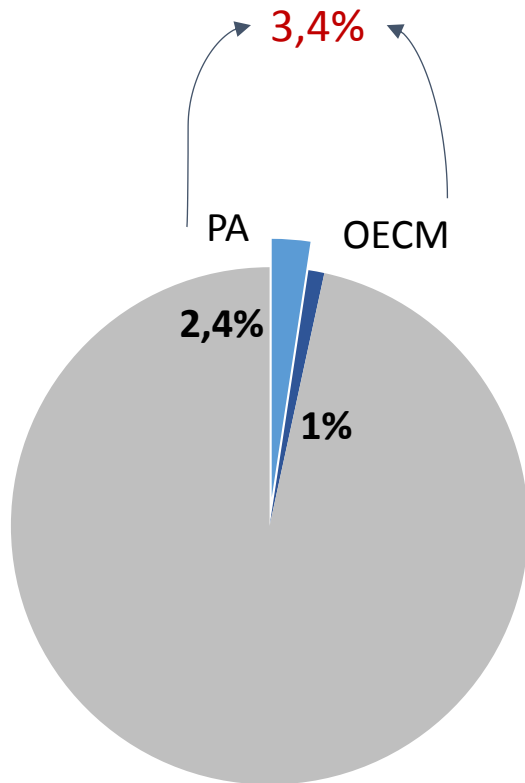


# Marine Protected Areas & OECMs in Russia

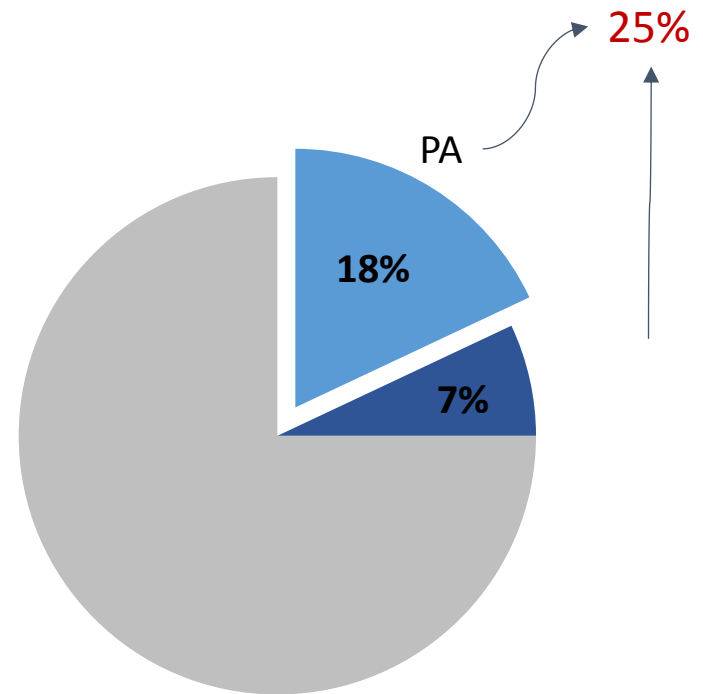




# Marine PAs & OECMs

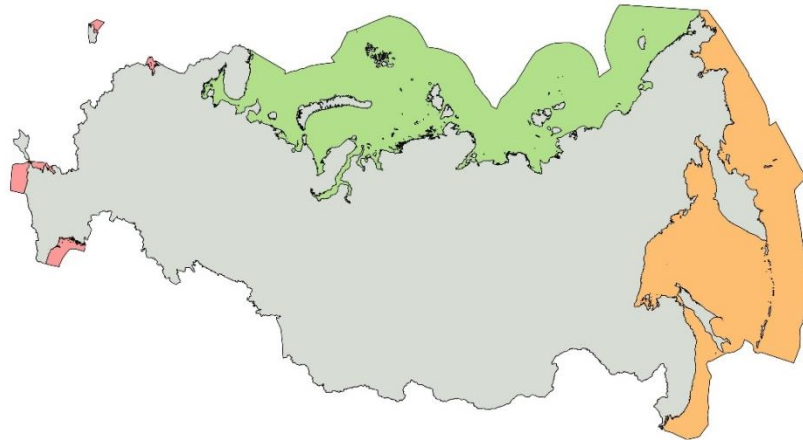


All waters under  
national jurisdiction

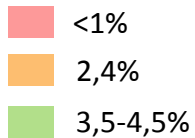
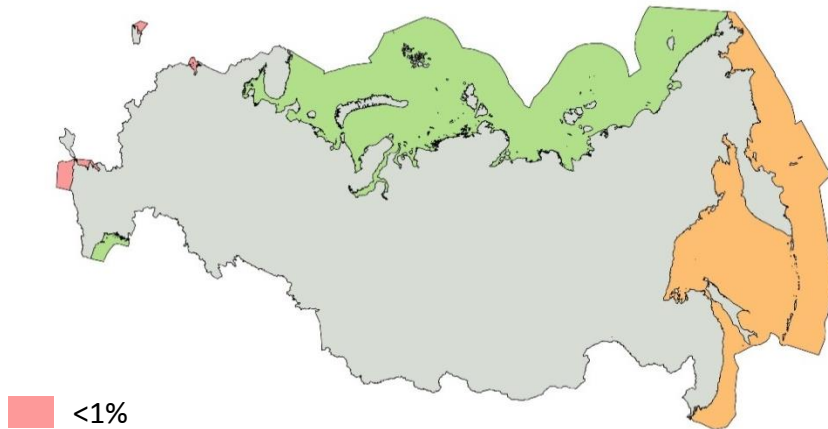


Territorial & Inner  
Waters

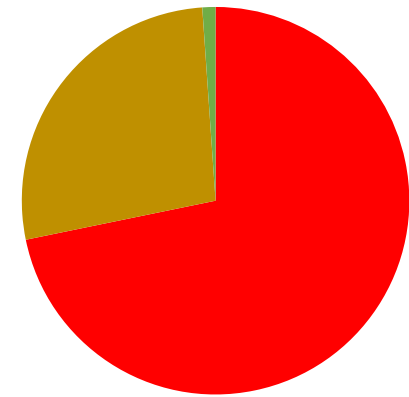
# Marine PAs & OECMs into main marine basins



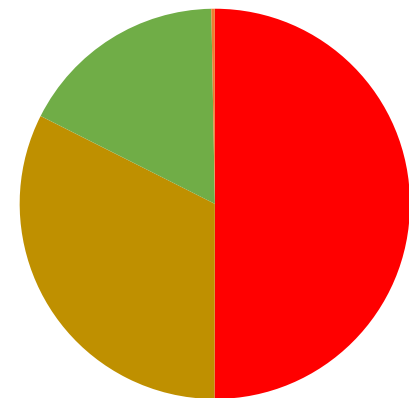
PA only



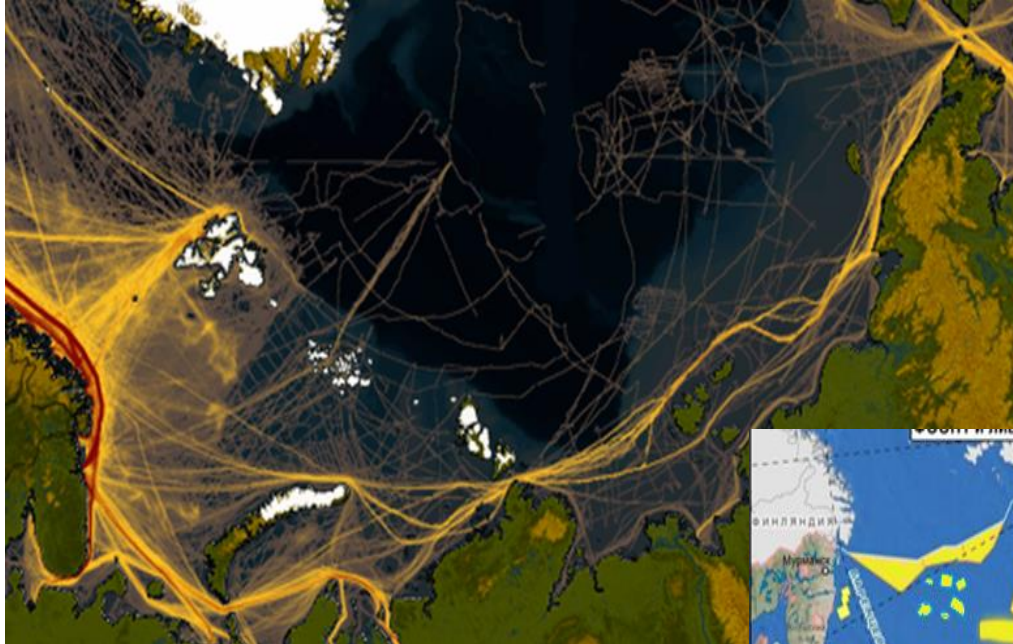
IUCN Categories



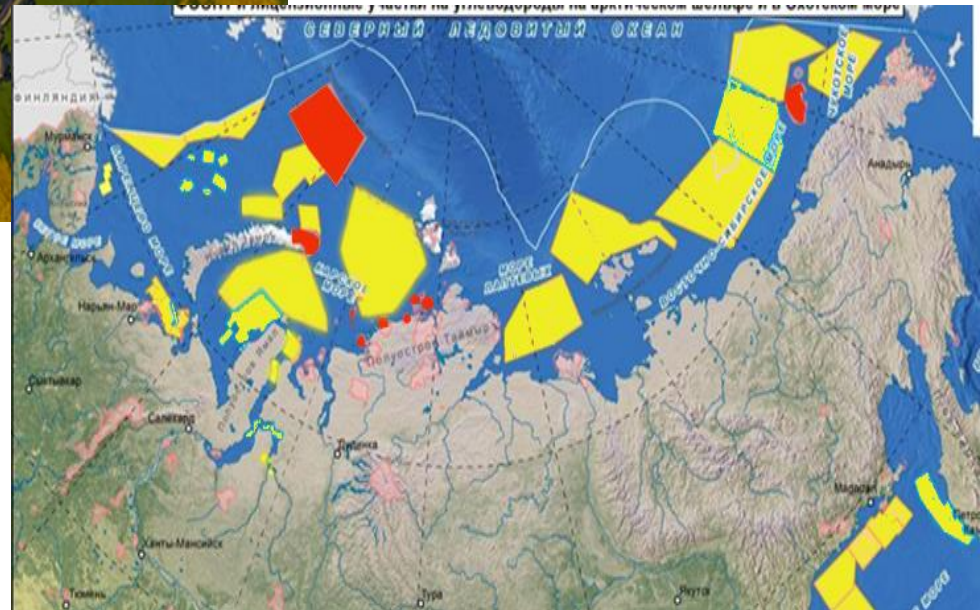
Ia Ib III IV



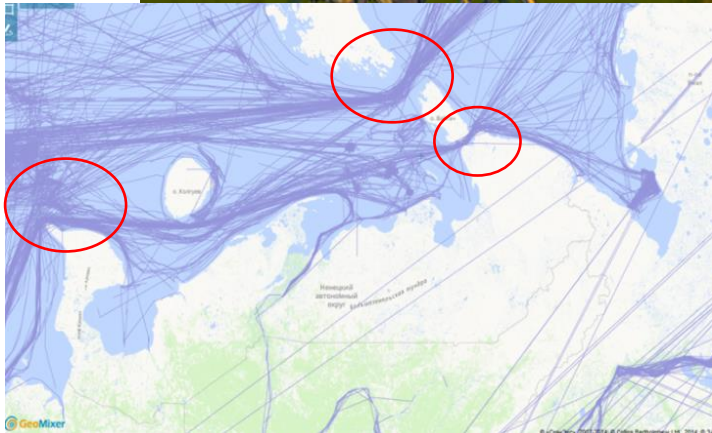
Ia Ib III IV VI



## Shipping



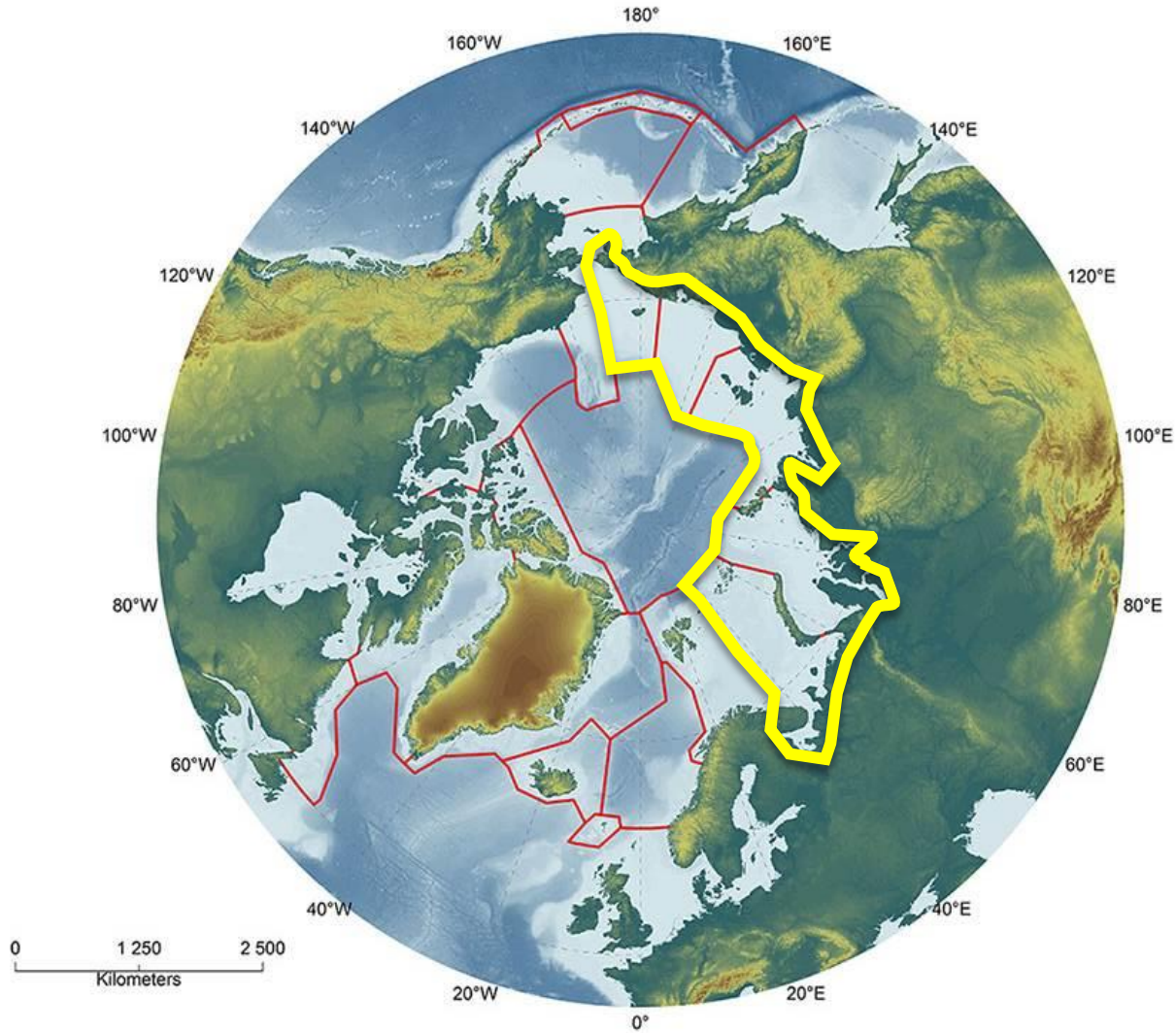
Oil&amp;Gas



~ 25 % of EEZ



# Arctic MPAs & OECMs



# GAP analysis

---

100% representation an sufficient for:

High productivity/biodiversity zones (4)

Biotopes

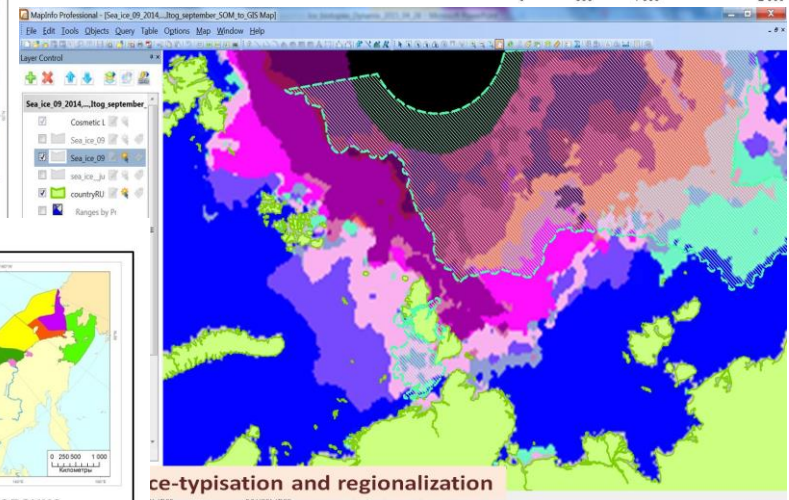
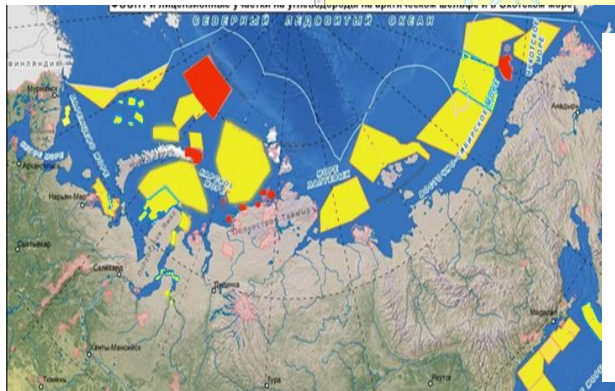
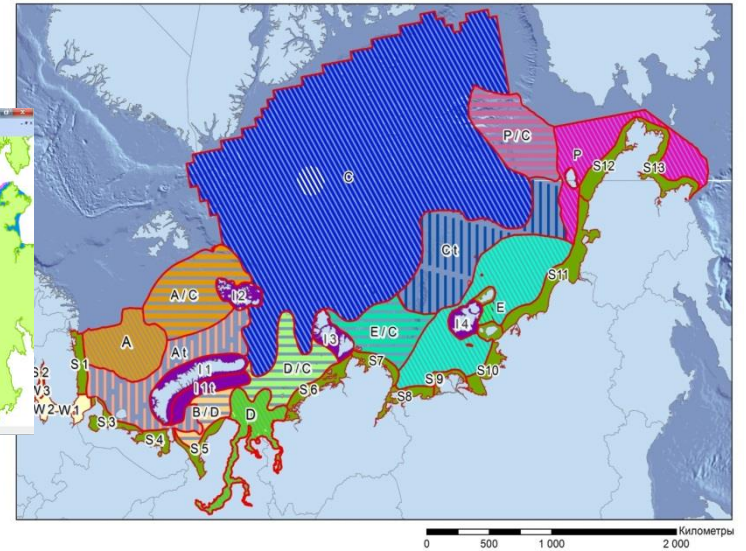
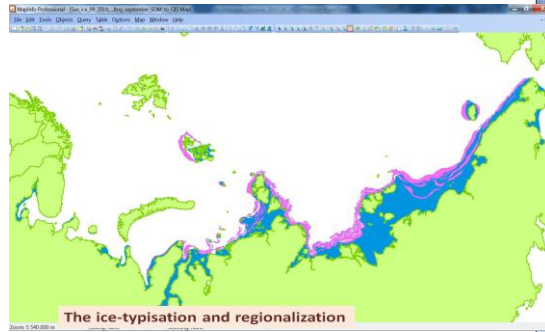
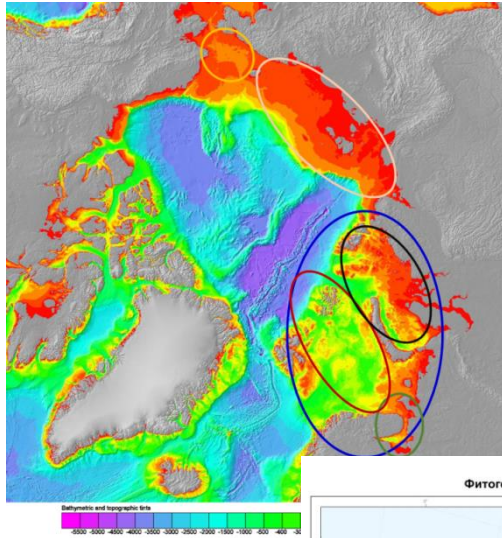
1. benthic biotopes (36)
2. pelagic biotopes (30)
3. biotopes of ice-associated species & communities (7)

Red list and keystone species

1. species (19 marine mammals, 18 birds, 22 fish)
2. key habitats (129 breeding, feeding, wintering areas, etc.)

# GAP analysis

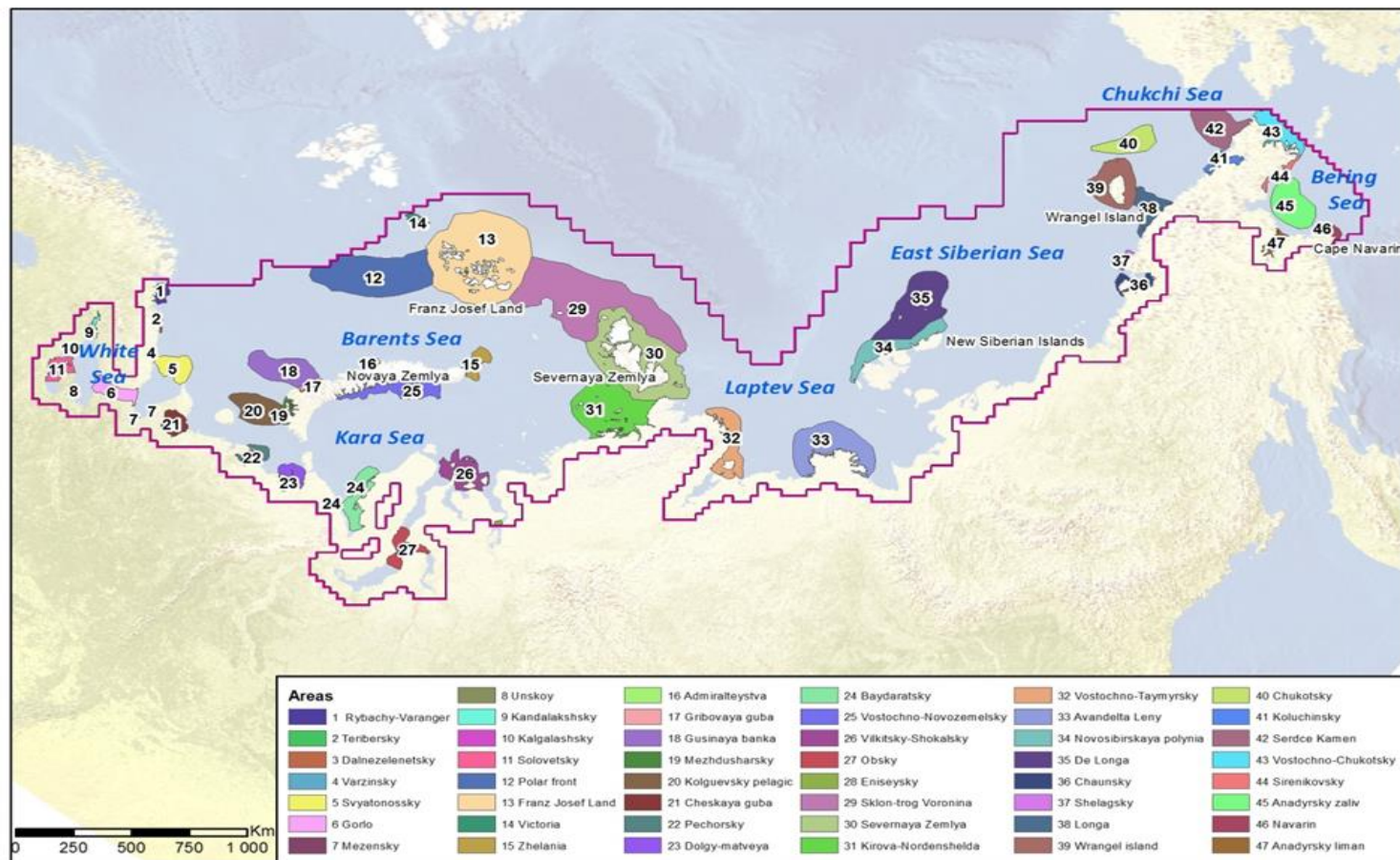
## 195 GIS layers





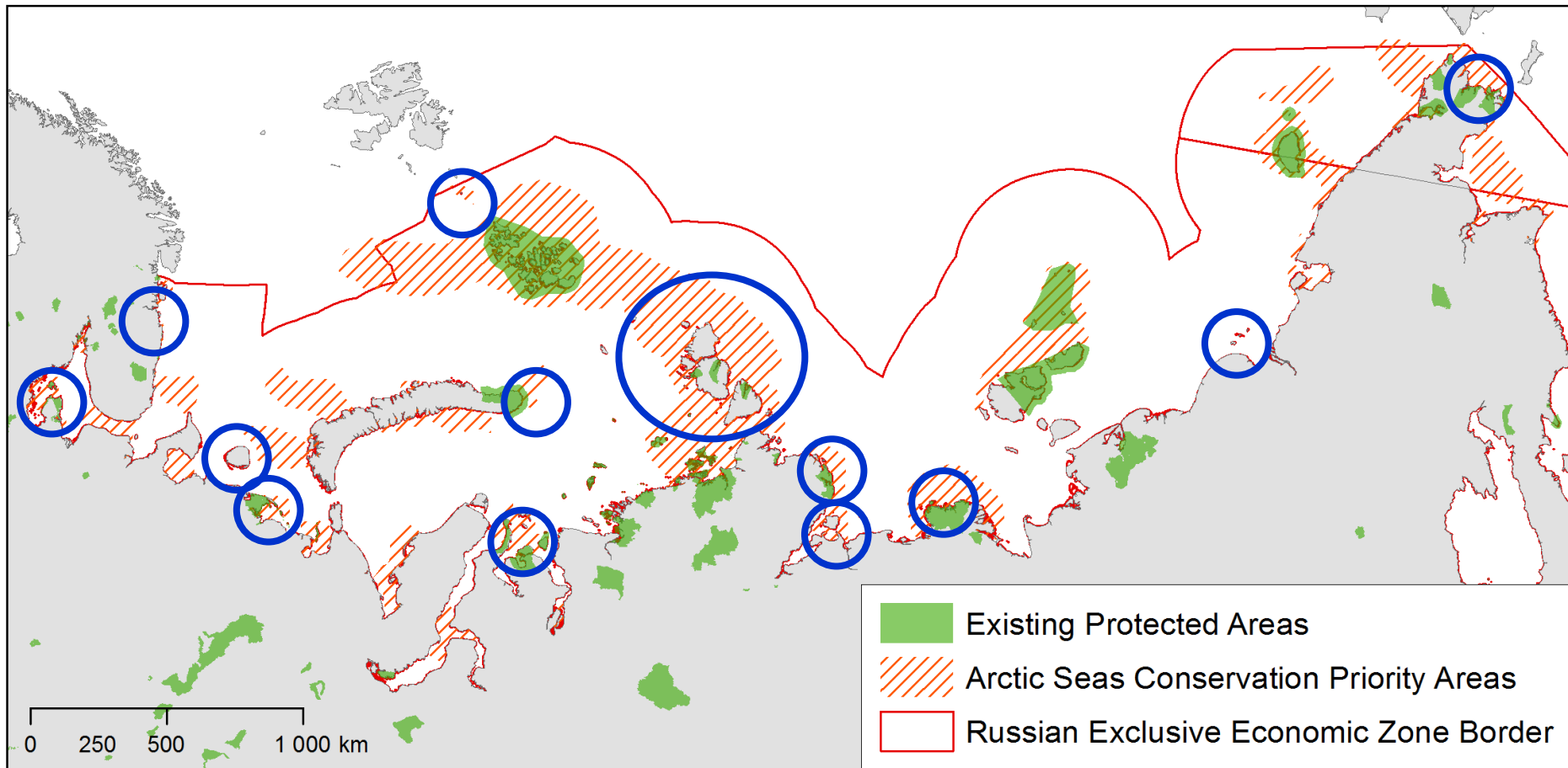
# Marine PA & OECM Network

47 area 25% of Russian EEZ 100% representative Connectivity



# New marine PAs creation

**20 million hectares** of new MPA in the Russian Arctic are under discussion at the different government levels.



# Priorities for the future conservation work

---

The first and most important priority is the conservation of pristine and wild biodiversity by creating new terrestrial, coastal and marine protected areas of **IUCN Categories I-IV** to ensure 100% representativeness and sufficiency of intact and wild landscapes/seascapes, ecosystems, species, etc. in the National System of Protected Areas of IUCN categories I-IV.

*(A system for assessing representativeness at the international level should be defined or chosen so the countries can evaluate their contribution at the international level)*

Expanding and improving governance in the areas of **IUCN categories V-VI** and OCEMs to ensure connectivity, integration into a wider landscape and seascape, adaptation to climate change, and equitable management for local communities.



Thank you for your attention !