

# BIODIVERSITY CONSERVATION IN THE SULTANATE OF OMAN

Ministry of Environment and Climate Affairs  
Biodiversity Department

Ahmed AlShukaili

Tel: +968 24404755

Email: [ahmed.alshukaili@meca.gov.om](mailto:ahmed.alshukaili@meca.gov.om)

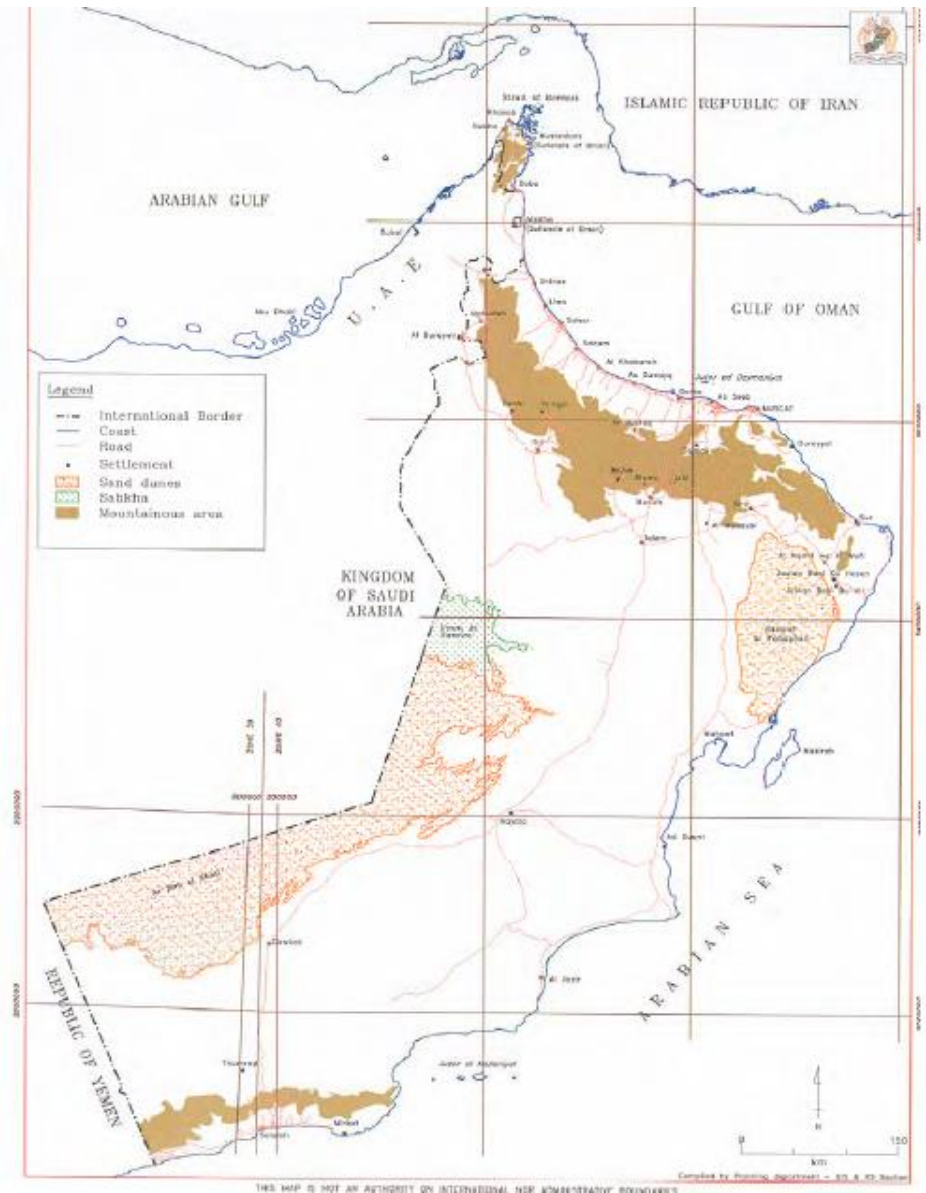
October 2017

# Country Profile

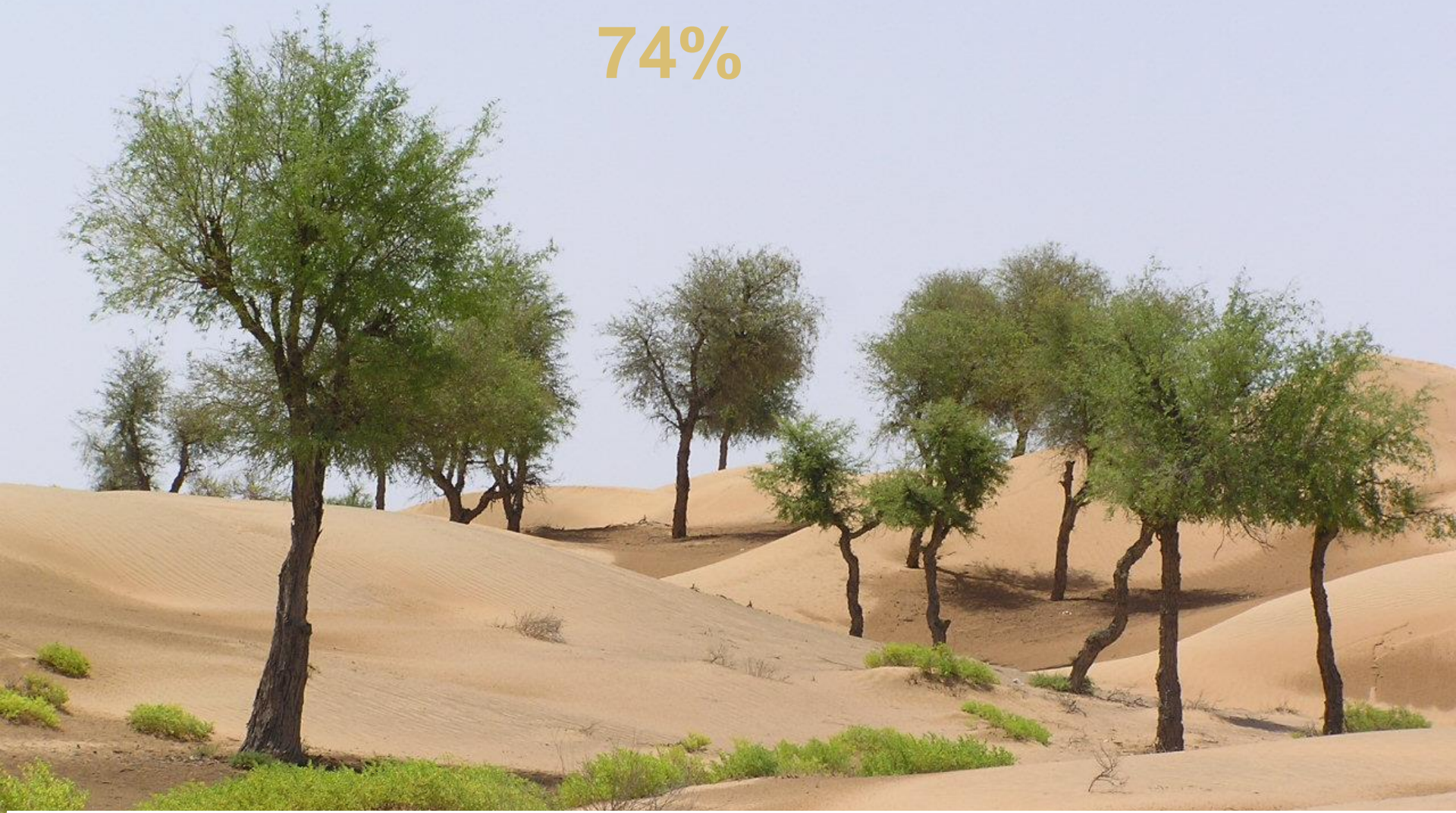
- Southeast the Arabian Peninsula
- 309,500 sq km
- 3,165 km coastline
- Desert Sub-tropical, except South; an arid and semi-arid tropical climate
- Annual rainfall averages about 100 mm



- Unique bio-geographic location
- North & central parts sharing species with Iran & Pakistan
- Southern part with African affinities
- sabkha, khwar, wadi, oases, jebels, islands, plains, deserts



# Deserts & Sand Dunes 74%





# Mountains 15%





# Costal Areas





# Marine environment





# Our Biodiversity Wealth

- Plants, 1,600+ species
- 4.7% (flowering plants) are endemic to the country
- 3.2% endemic to the region
- 46% are threatened





# Our Biodiversity Wealth

- Invertebrates 768 +species
- Fish 991 species
- Herps 105 species: 6.7% of herps are endemic nationally
- Birds 546 species: 85 bird species as residents, others are visitors
- Mammals 101 (36 marine, 65 land) species
- Total Estimate of All Species: about 4,000+
- With 37 species protected



# Iconic species

NOT EVALUATED	DATA DEFICIENT	LEAST CONCERN	NEAR THREATENED	< VULNERABLE >	ENDANGERED	CRITICALLY ENDANGERED	EXTINCT IN THE WILD	EXTINCT
NE	DD	LC	NT	VU	EN	CR	EW	EX



Arabian leopard (*Panthera pardus*)





# Iconic species

Arabian Oryx (*Oryx leucoryx*)



NOT  
EVALUATED  
NE

DATA  
DEFICIENT  
DD

LEAST  
CONCERN  
LC

NEAR  
THREATENED  
NT

< VULNERABLE >  
VU

ENDANGERED  
EN

CRITICALLY  
ENDANGERED  
CR

EXTINCT  
IN THE WILD  
EW

EXTINCT  
EX



# Iconic species

NOT EVALUATED	DATA DEFICIENT	LEAST CONCERN	NEAR THREATENED	< VULNERABLE >	ENDANGERED	CRITICALLY ENDANGERED	EXTINCT IN THE WILD	EXTINCT
NE	DD	LC	NT	VU	EN	CR	EW	EX



Omani Spiny-tailed Lizard, Thomas' Mastigure (*Uromastix thomasi*)





# Iconic species

## North West Indian Ocean Subpopulation

NOT EVALUATED	DATA DEFICIENT	LEAST CONCERN	NEAR THREATENED	VULNERABLE	ENDANGERED	CRITICALLY ENDANGERED	EXTINCT IN THE WILD	EXTINCT
NE	DD	LC	NT	VU	EN	CR	EW	EX



- Loggerhead sea turtles (*Caretta caretta*)



# Iconic species

NOT EVALUATED	DATA DEFICIENT	LEAST CONCERN	NEAR THREATENED	VULNERABLE	<ENDANGERED>	CRITICALLY ENDANGERED	EXTINCT IN THE WILD	EXTINCT
NE	DD	LC	NT	VU	EN	CR	EW	EX

## Arabian Sea Subpopulations

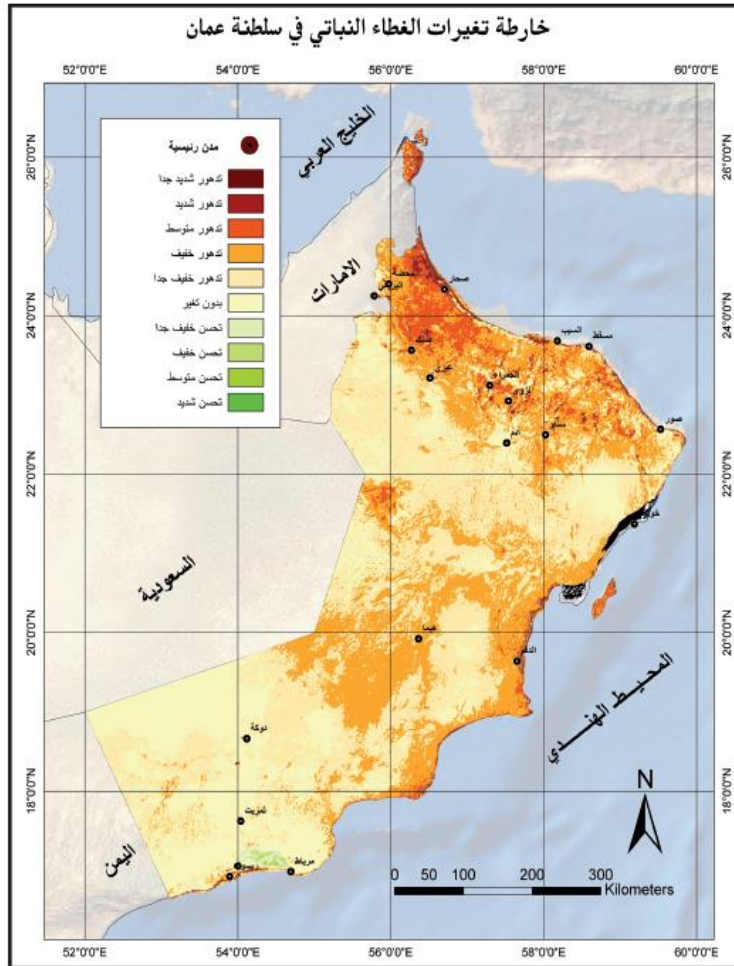


Humpback whales (*Megaptera novaeagliae*)





# 1- Deforestation and habitat loss

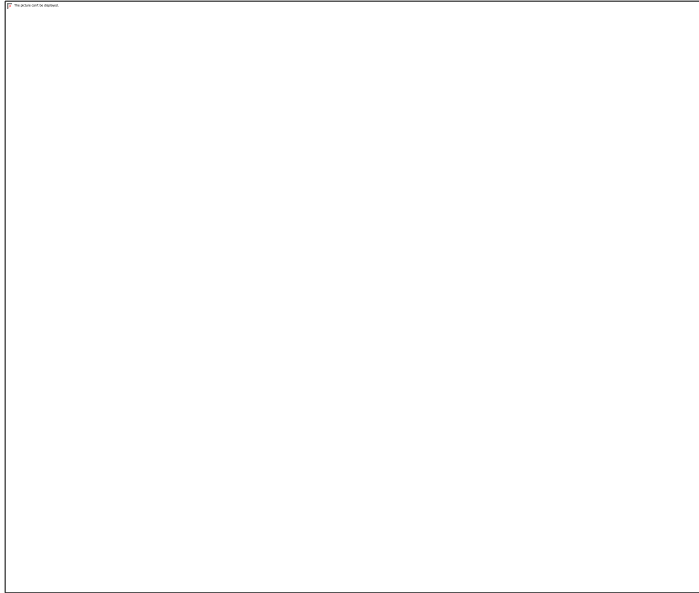


## 2- Overexploitation





# 3- Invasive species



Mesquite  
Prosopis Juliflora



Common  
Myna



Indian Ring-Necked Parakeet

# 4- Pollution

## Oil spills



Waste disposal



The vessels cleaning or flushing waste oil

Crashed vessels





# 5- Climate Change



Extreme weather phenomena



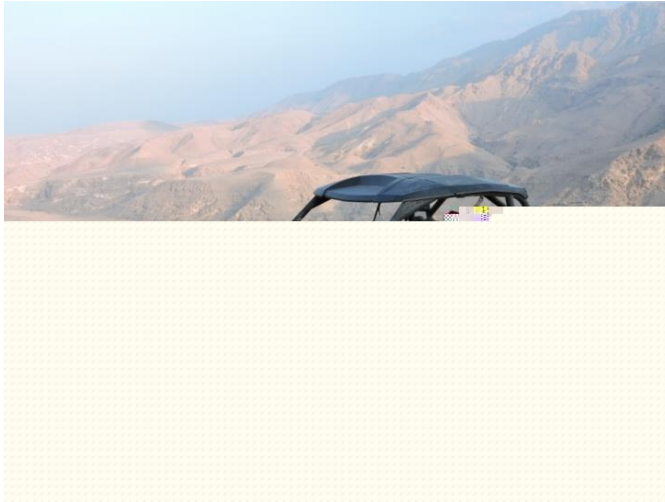
strongest tropical cyclone

# Conservation Action

- Royal Decrees/Ministerial Decisions on nature reserves, wildlife, conservation of environment, pollution.
- Oman is a signatory of many international agreements, (CBD, CITES, Climate Changes, UNCCD, etc)
- **National Strategy & Action Plan**
  - National Biodiversity Strategy & Action Plan (NBSAP)
  - Acting Plan to Combat Desertification
  - Costal Zones Management
  - Wetlands Strategy and Action Plan



# Rangers & Watchers



# Protected Areas

Number of Protected areas

16

Polygons/Points ratio



44%

Polygons

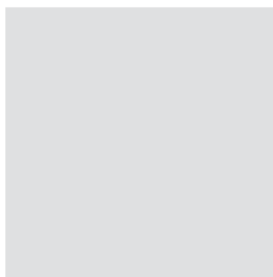
56%

Points

Protected areas coverage (Ref 1 ↓)



Area terrestrial



2.57%

coverage

7,984.99 km<sup>2</sup>

Land Area Protected

310,373.1 km<sup>2</sup>

Total Land Area

<https://www.protectedplanet.net/country/OM>





# Protected Areas

Number of sources



Area marine

For International  
designations

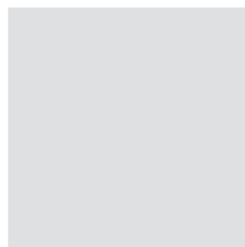
1

For National  
designations

1

TOTAL

2



**0.12%**

coverage

**664.0 km<sup>2</sup>**

Marine Area Protected

**538,980.2 km<sup>2</sup>**

Total Marine Area

<https://www.protectedplanet.net/country/OM>



# Protected Areas

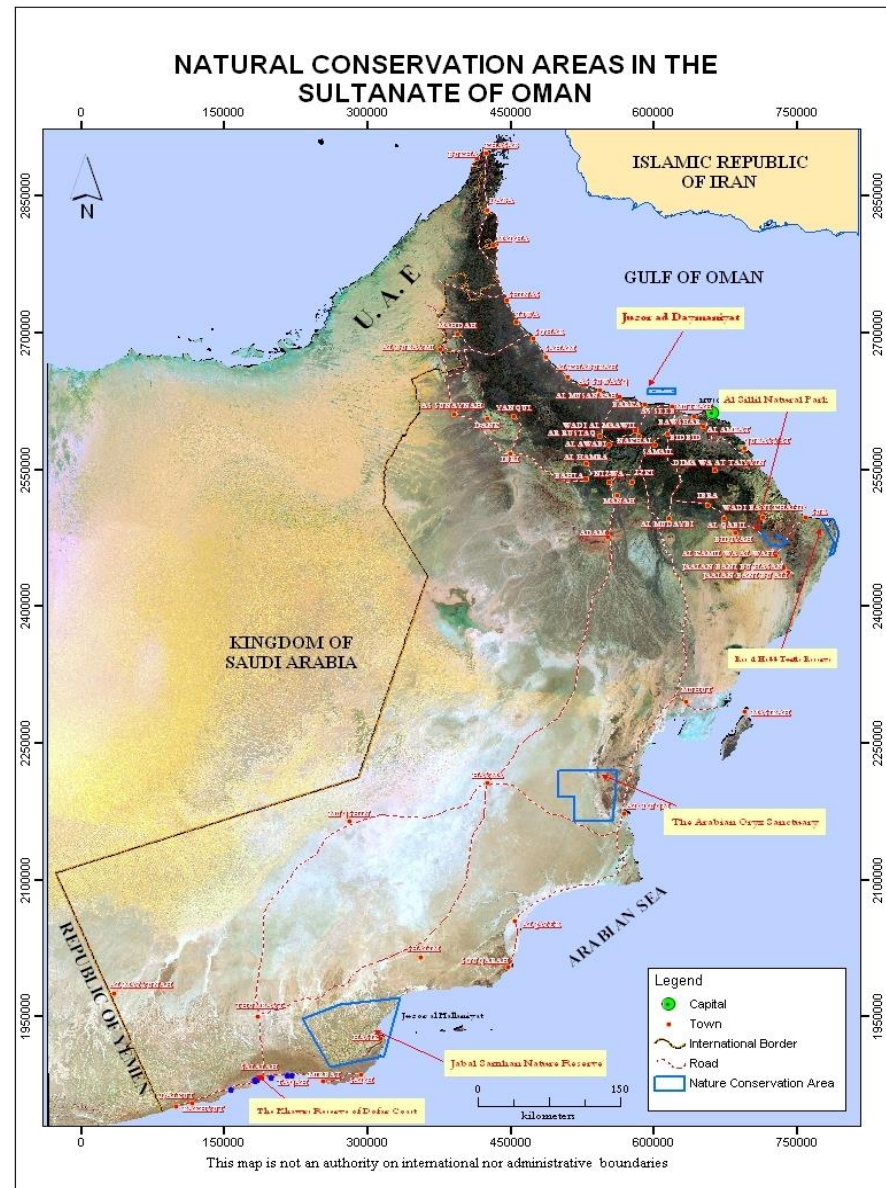
•309,500 sq km

18 Nature Reserves

4 Special Important Areas

12457.27 km<sup>2</sup>

More 4 %



# Ex situ Conservation



Oman Animal & Plant  
Genetic Resources Center  
Wildlife Rehabilitation and  
Breeding Centers





# Combat Desertification



# Mangrove Reforestation





# Fog Harvesting





# Wild animal Survey

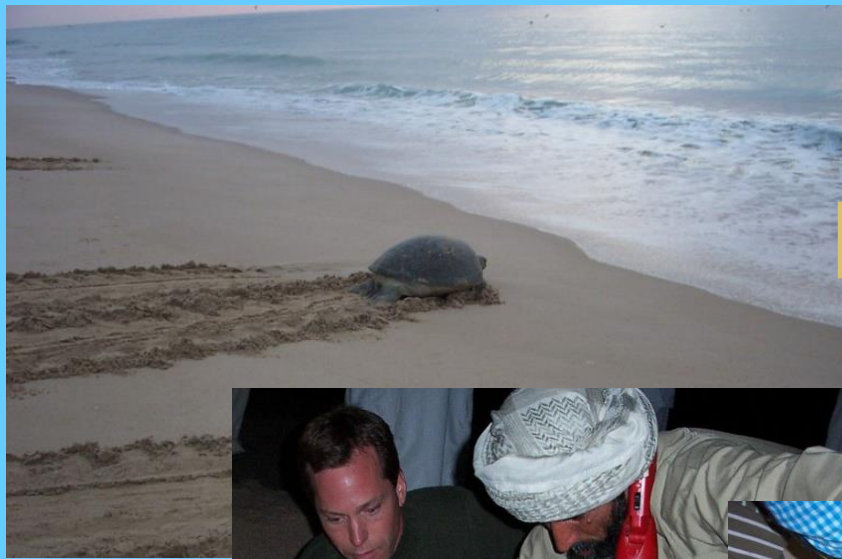


# Falcon Nesting Survey and Biology





# Marine Turtle Population Census and Protection







# National Coral Reef Management



# Environmental education and awareness





# Public Campaigns





**Thank YOU**

