



Global status of Aichi Biodiversity Target 11

*CBD Secretariat
Montreal*



Target 11

By 2020, at least 17 per cent of terrestrial and inland water areas and 10 per cent of coastal and marine areas, especially areas of particular importance for biodiversity and ecosystem services, are conserved through effectively and equitably managed, ecologically representative and well-connected systems of protected areas and other effective area-based conservation measures, and integrated into the wider landscape and seascape.



Global distribution of PAs (Oct 2019)

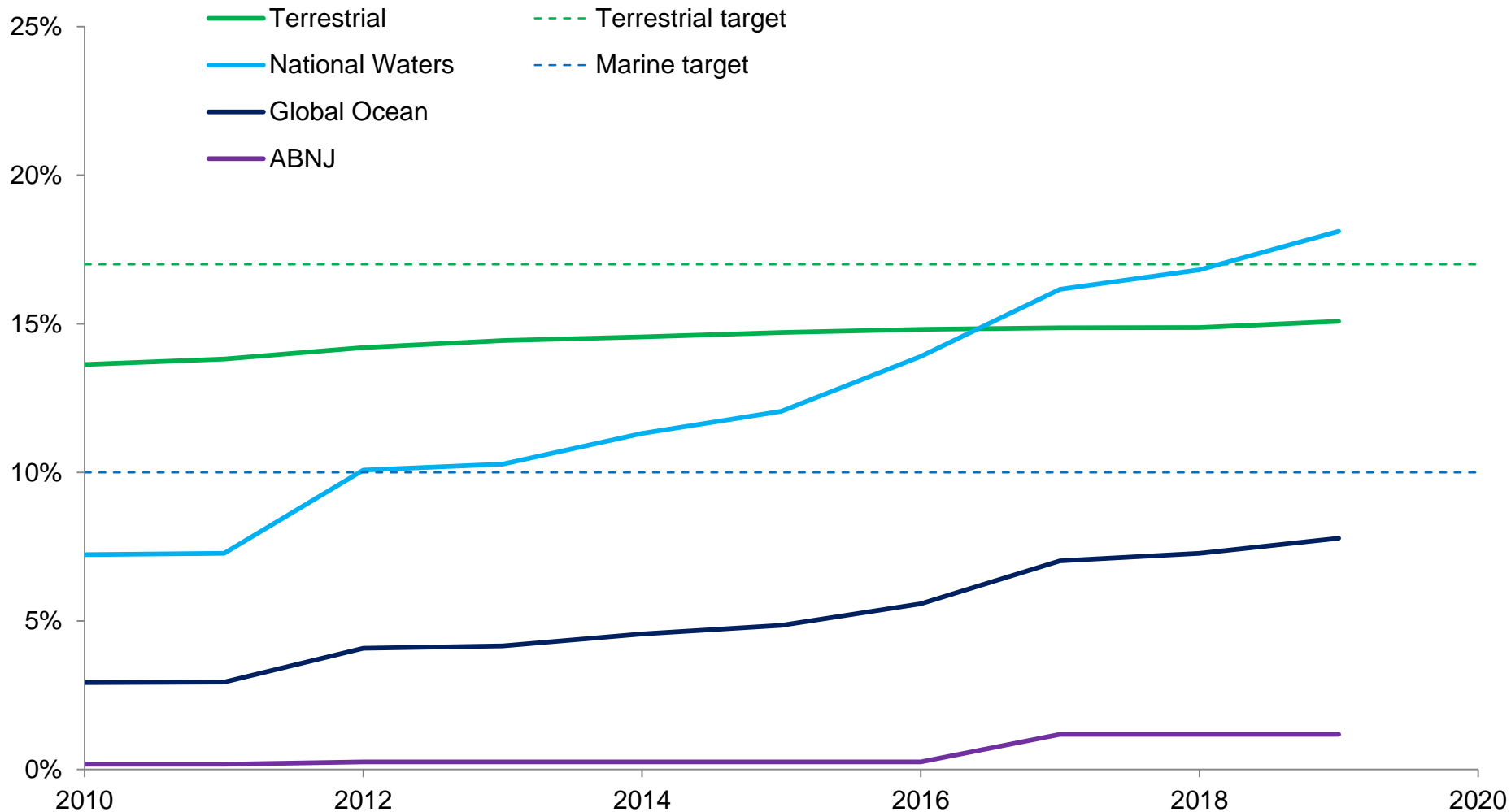
Protected Areas of the world



Source: UNEP-WCMC and IUCN (2019). Protected Planet: The World Database on Protected Areas (WDPA) [On-line], October 2019, Cambridge, UK: UNEP-WCMC. Available at www.protectedplanet.net

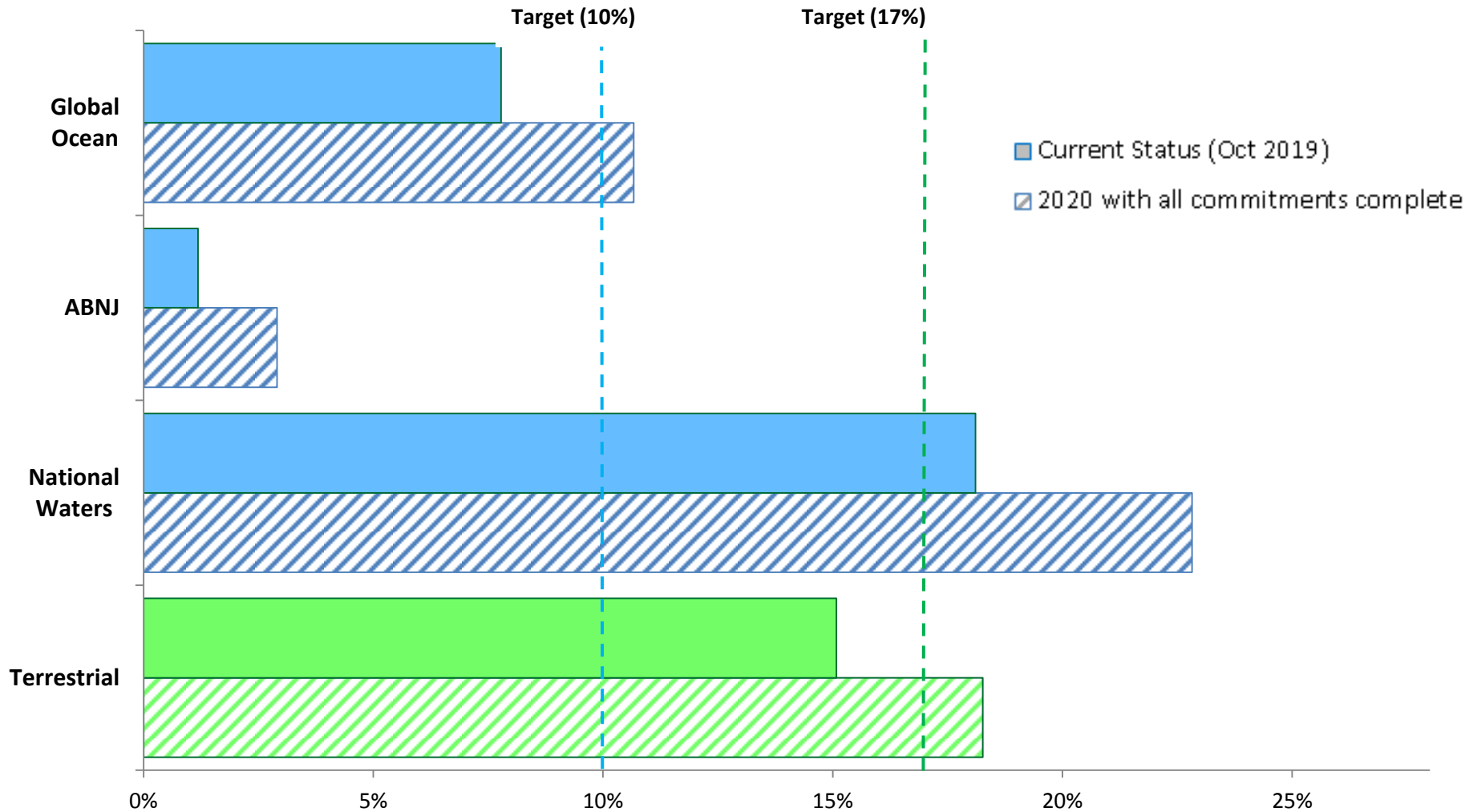


Change in global PA coverage since 2010





National Commitments

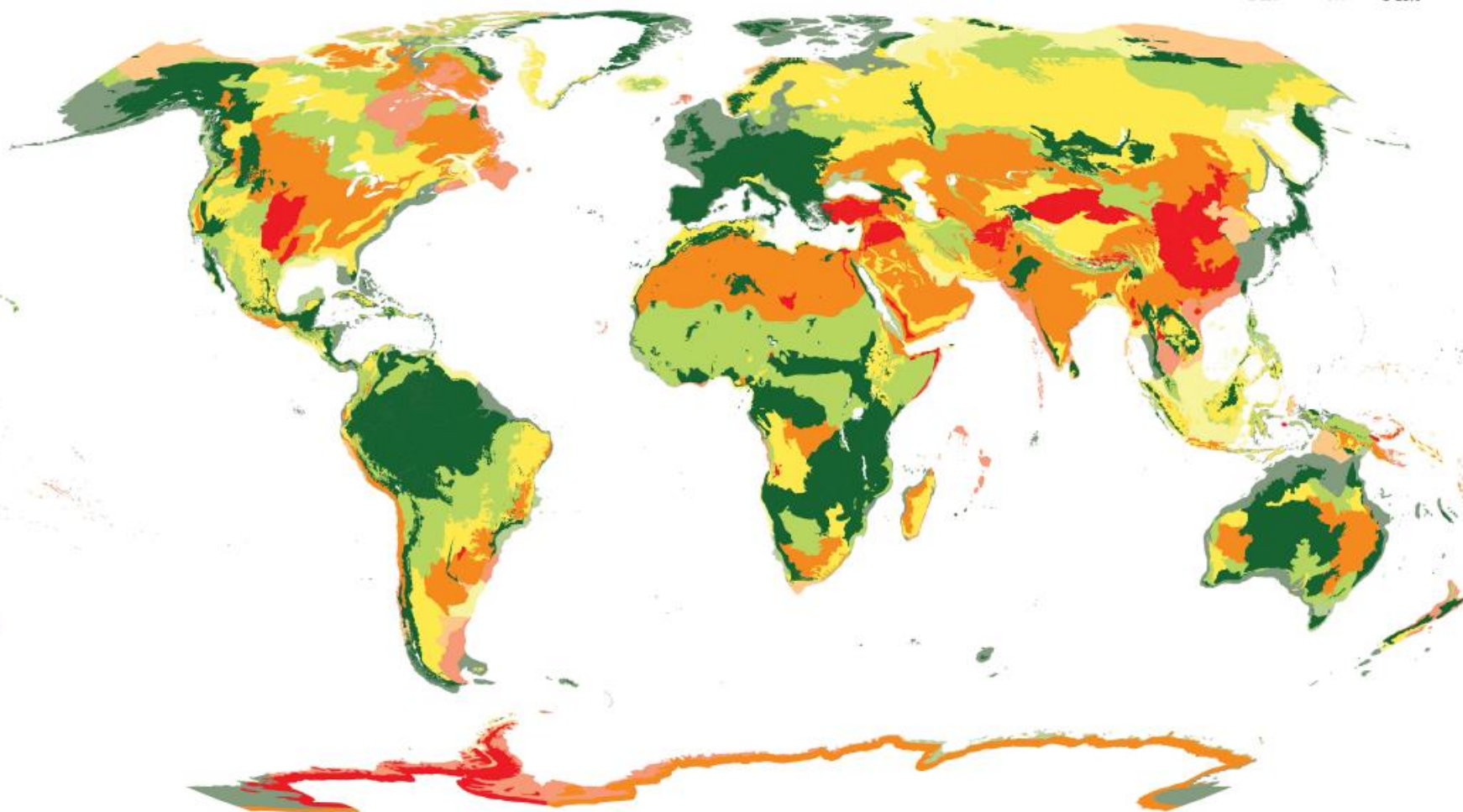
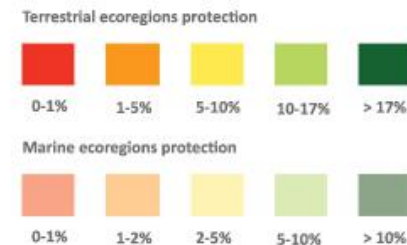


Map of protection levels for the terrestrial and marine ecoregions of the world as of January 2019.

Battistella, L., Delli, G., Mandrici, A., Bendito Garcia, E., Dubois, G. (2019)

Map of protection levels for the terrestrial and marine ecoregions of the world as of January 2019. Downloadable from <http://dopa.jrc.ec.europa.eu/>

© European Union, 2019. Reproduction is authorised provided the source is acknowledged.



Description:

The map shows the percentage of coverage of the terrestrial and marine ecoregions of the world, excluding lakes, rock and ice, by protected areas. The statistics were computed using the World Database of Protected Areas (WDPA) from January 2019 and ecoregion maps defined by Olsen et al. (2001) and Spalding et al. (2007). The marine ecoregions were clipped to the coastline of the terrestrial ecoregions and an outer boundary corresponding to the 200-meter isobath (Spalding et al. 2007). The analysis used all designated protected areas recorded in the WDPA as polygons, or points with a reported area, except for UNESCO Man and Biosphere Reserves because many of their buffer areas do not meet the protected area definition of the International Union for Conservation of Nature (IUCN). All protected areas with a "proposed" or "not reported" status in the WDPA were excluded from the analysis. Points were buffered with a circular buffer corresponding to their reported area. Buffered points and polygons were then combined and all spatial overlaps between protected areas removed to avoid double counting.

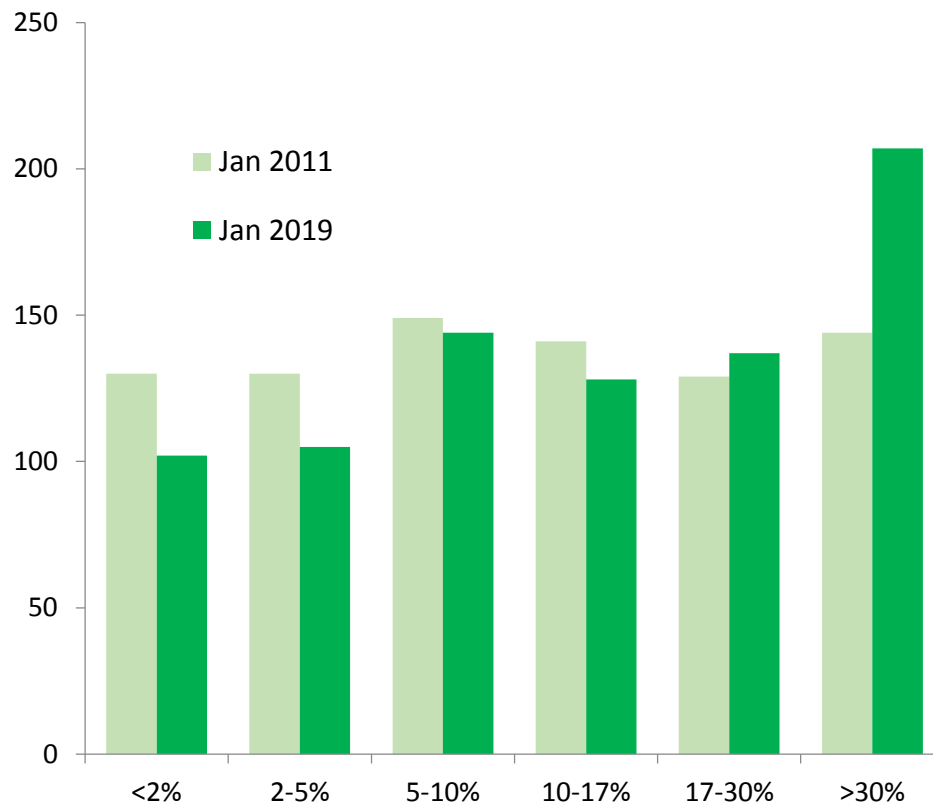
References:

- IUCN and UNEP-WCMC (2019). The World Database on Protected Areas (WDPA), January 2019. Cambridge, UK: UNEP-WCMC. Available at: www.protectedplanet.net
- Olsen, D.M. et al. (2001). Terrestrial ecoregions of the world: a new map of life on Earth. *BioScience*, 51(11): 933-938.
- The Nature Conservancy (2012). Marine Ecoregions and Pelagic Provinces of the World. GIS layers developed by The Nature Conservancy with multiple partners, combined from Spalding et al. (2007) Marine ecoregions of the world: A bioregionalization of coastal and shelf areas. *BioScience* 57: 573-583. and Spalding et al. (2012) Pelagic provinces ecoregions of the world: A biogeographic classification of the world's surface pelagic waters. *Ocean & Coastal Management* 60: 19-30. GIS DATA (the non-cut on the coastline version has been used) downloaded on 20160720 from <http://data.unep-wcmc.org/datasets/38>

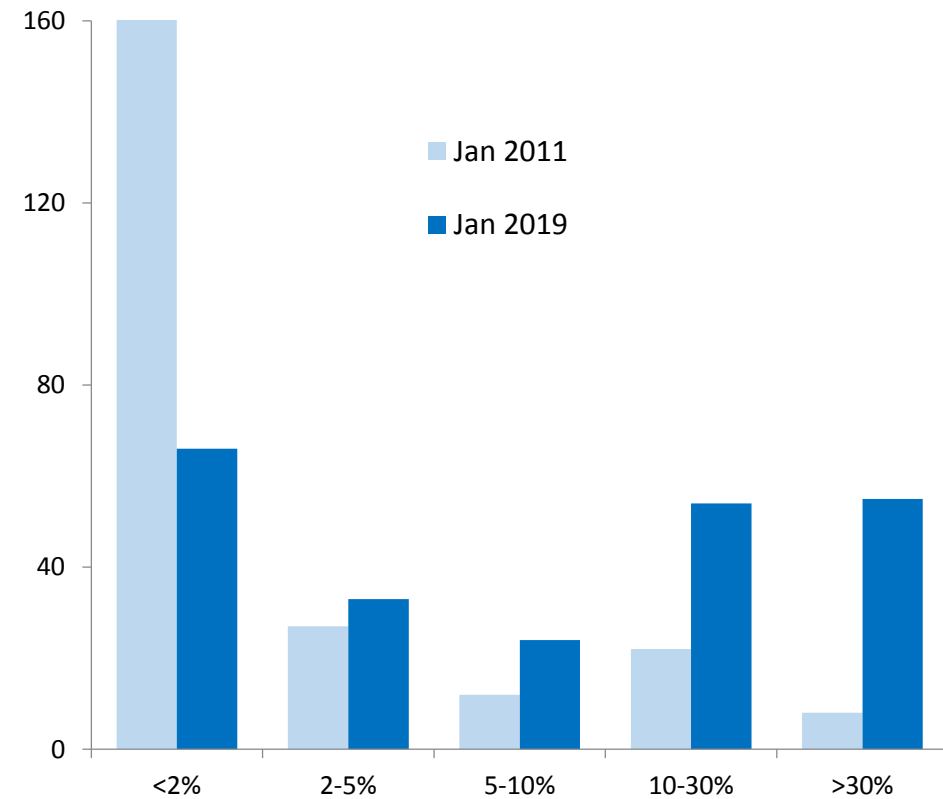


PA coverage of ecoregions

Terrestrial ecoregions

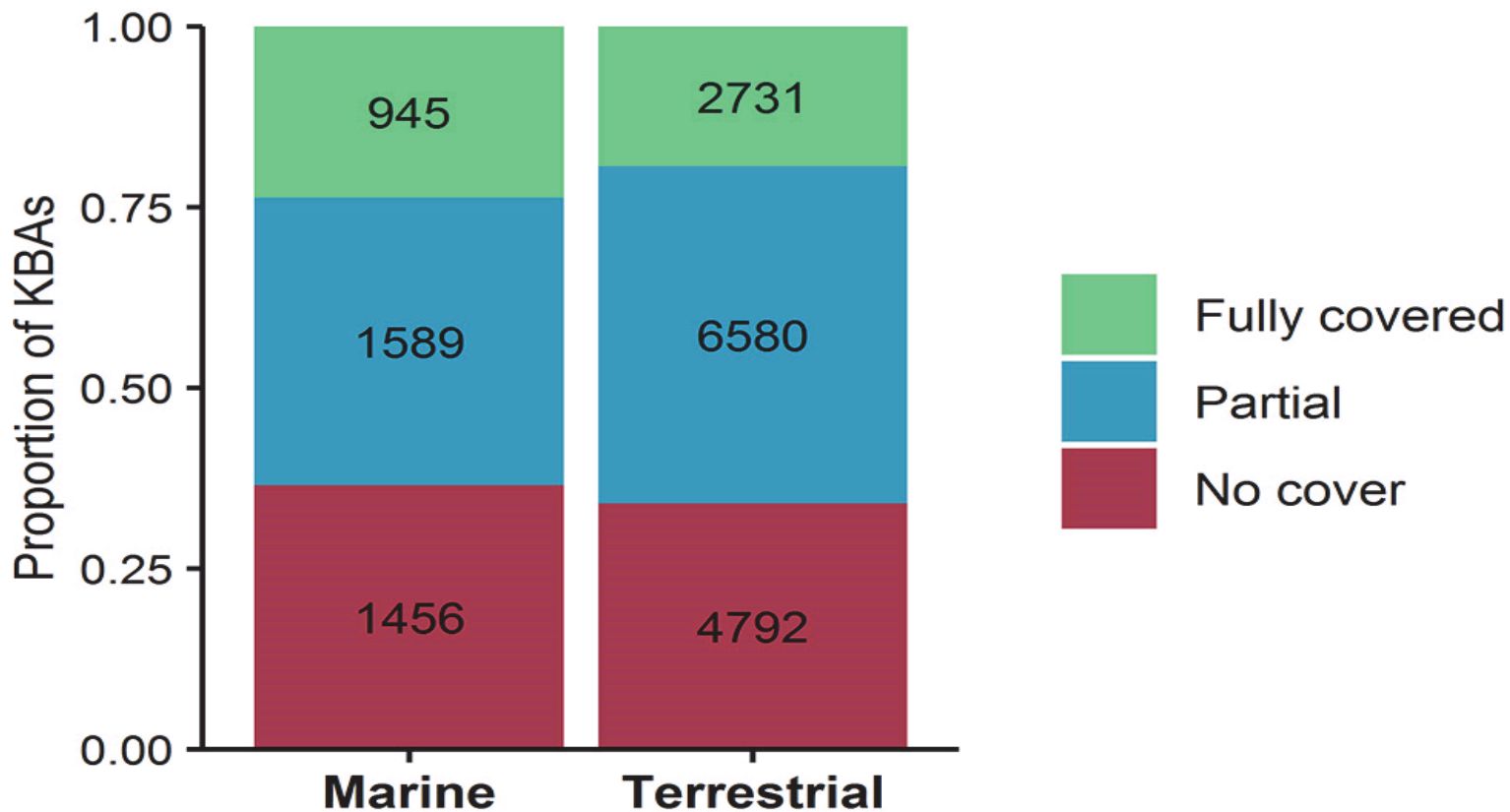


Marine ecoregions





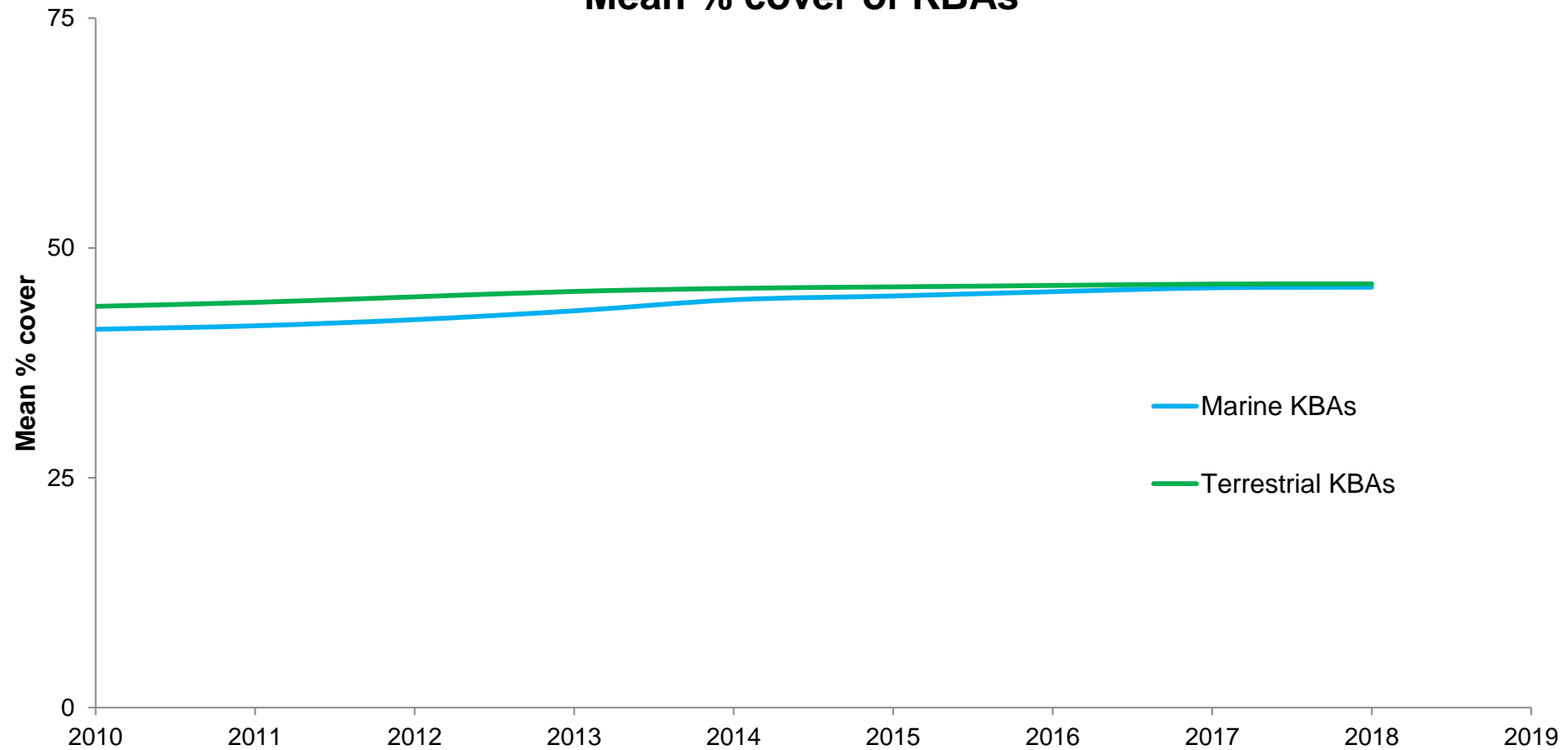
PA cover of Key Biodiversity Areas (KBAs)





PA cover of Key Biodiversity Areas (KBAs)

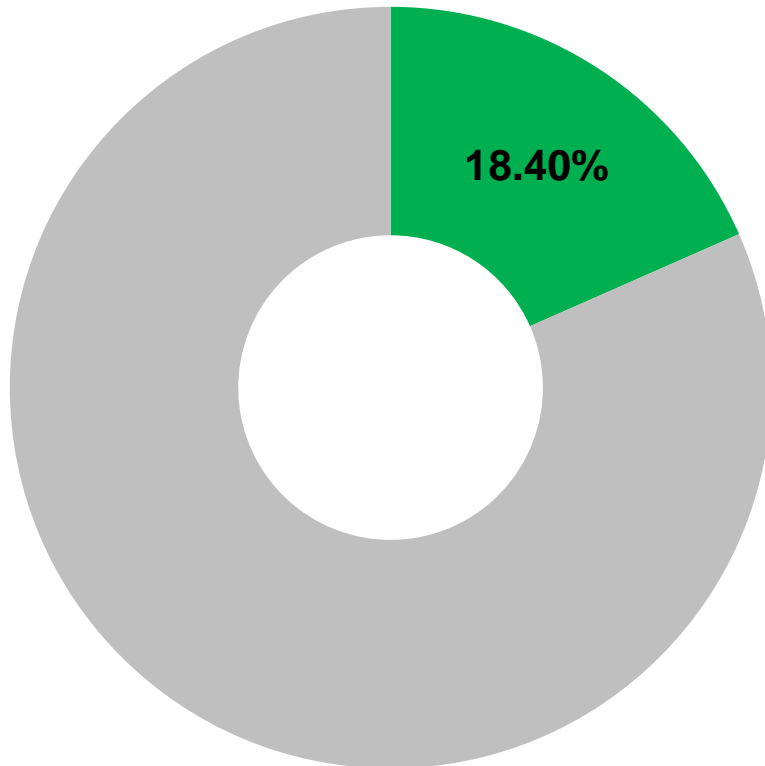
Mean % cover of KBAs



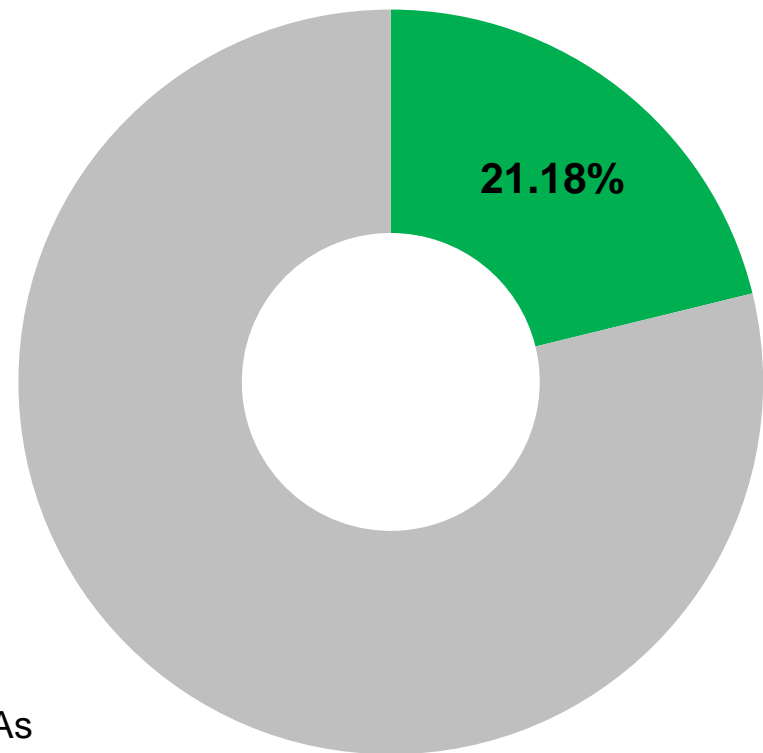


Ecosystem Services

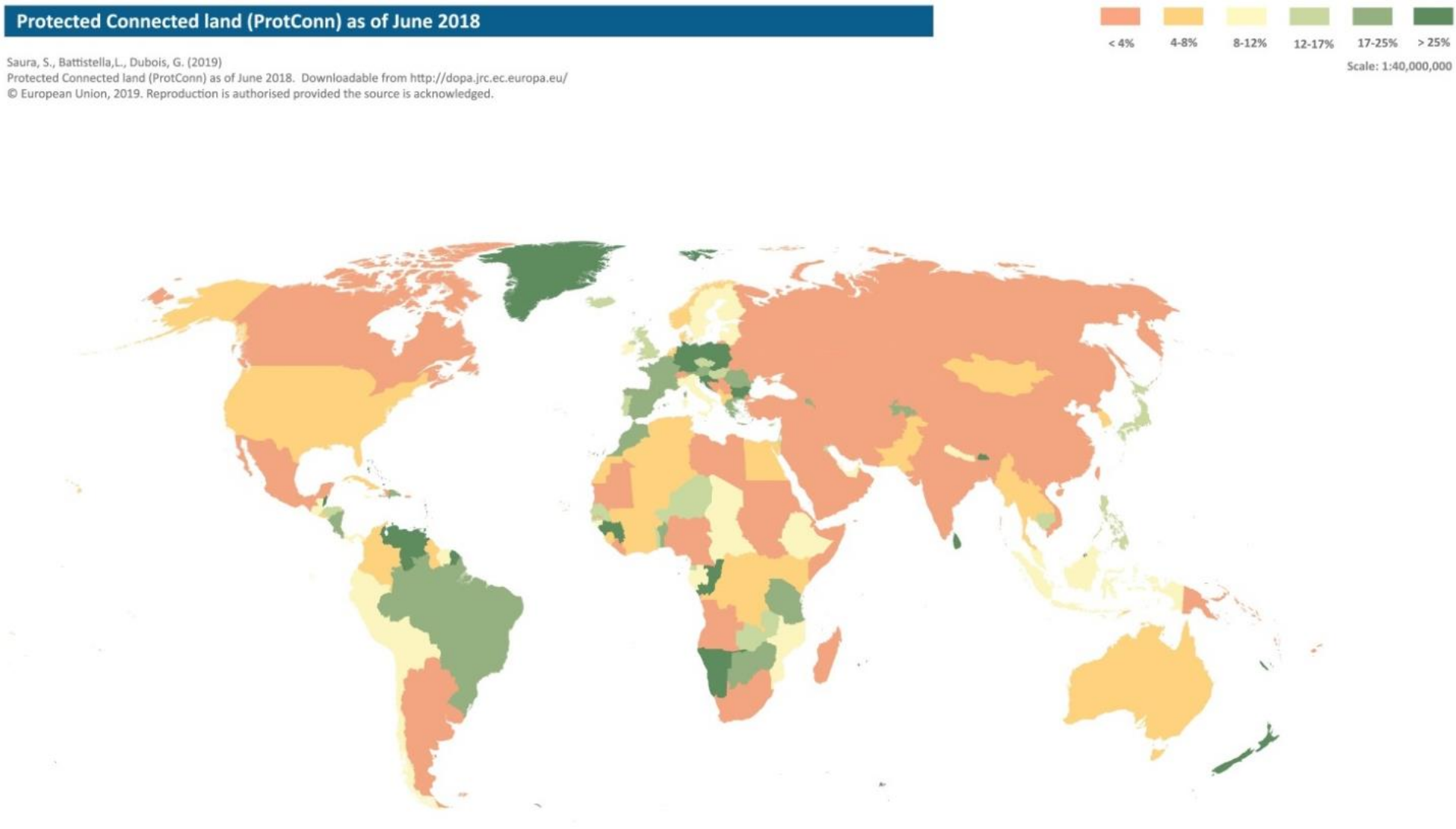
Total Carbon
(below ground C + organic soil C + above ground C)



Global Forest Cover



■ Protected
■ Outside PAs



Description:

The layer on the map contains the values of the ProtConnBound indicator, which measures the percentage of country area covered by protected and connected lands considering the part of Protected Area (PA) connectivity that is in the power of a country to influence, i.e. factoring out the PA isolation due to the sea and to foreign lands. The values correspond to a median dispersal distance of 10 km. The layer includes the ProtConn values for all the countries or territories (ISO3 codes) differentiated in the GAUL country layer for year 2015.

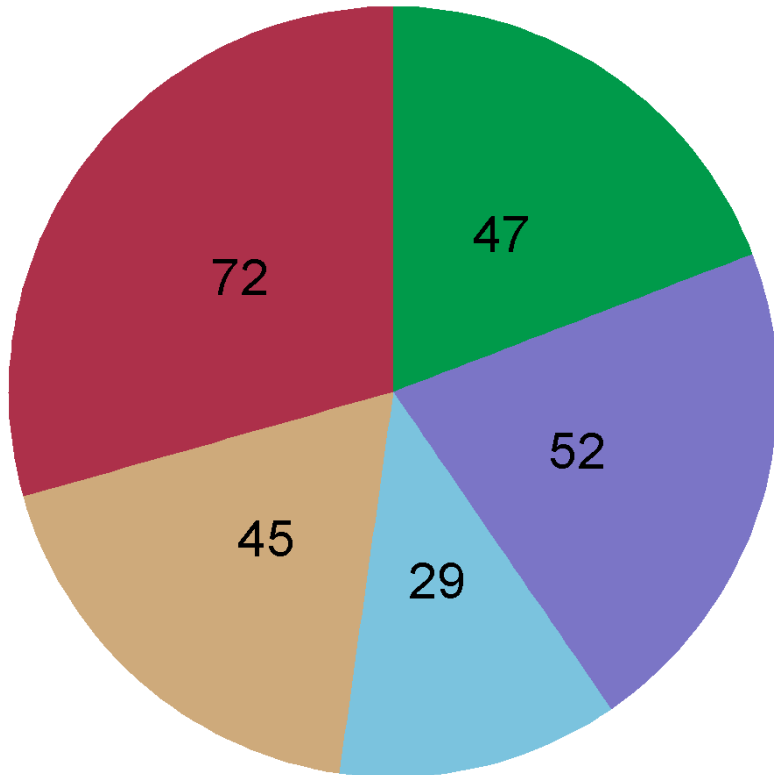
References:

Saura, S., Bertziky, B., Bastin, L., Battistella, L., Mandrici, A., Dubois, G. (2018). Protected area connectivity: shortfalls in global targets and country-level priorities. *Biological Conservation* 219: 53-67. <https://doi.org/10.1016/j.biocon.2017.12.020>
IUCN and UNEP-WCMC (2018). The World Database on Protected Areas (WDPA), June 2018. Cambridge, UK: UNEP-WCMC. Available at: www.protectedplanet.net
The Global Administrative Unit Layers (GAUL) available at: <http://www.fao.org/geonetwork/srv/en/metadata.show?id=12691>

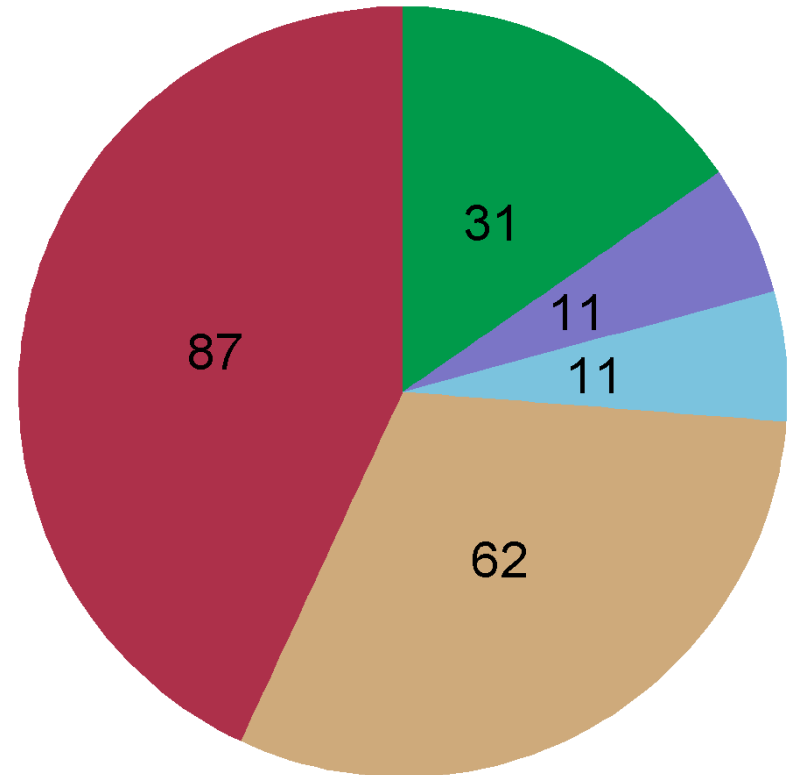


Completed PAME evaluations

Terrestrial



Marine

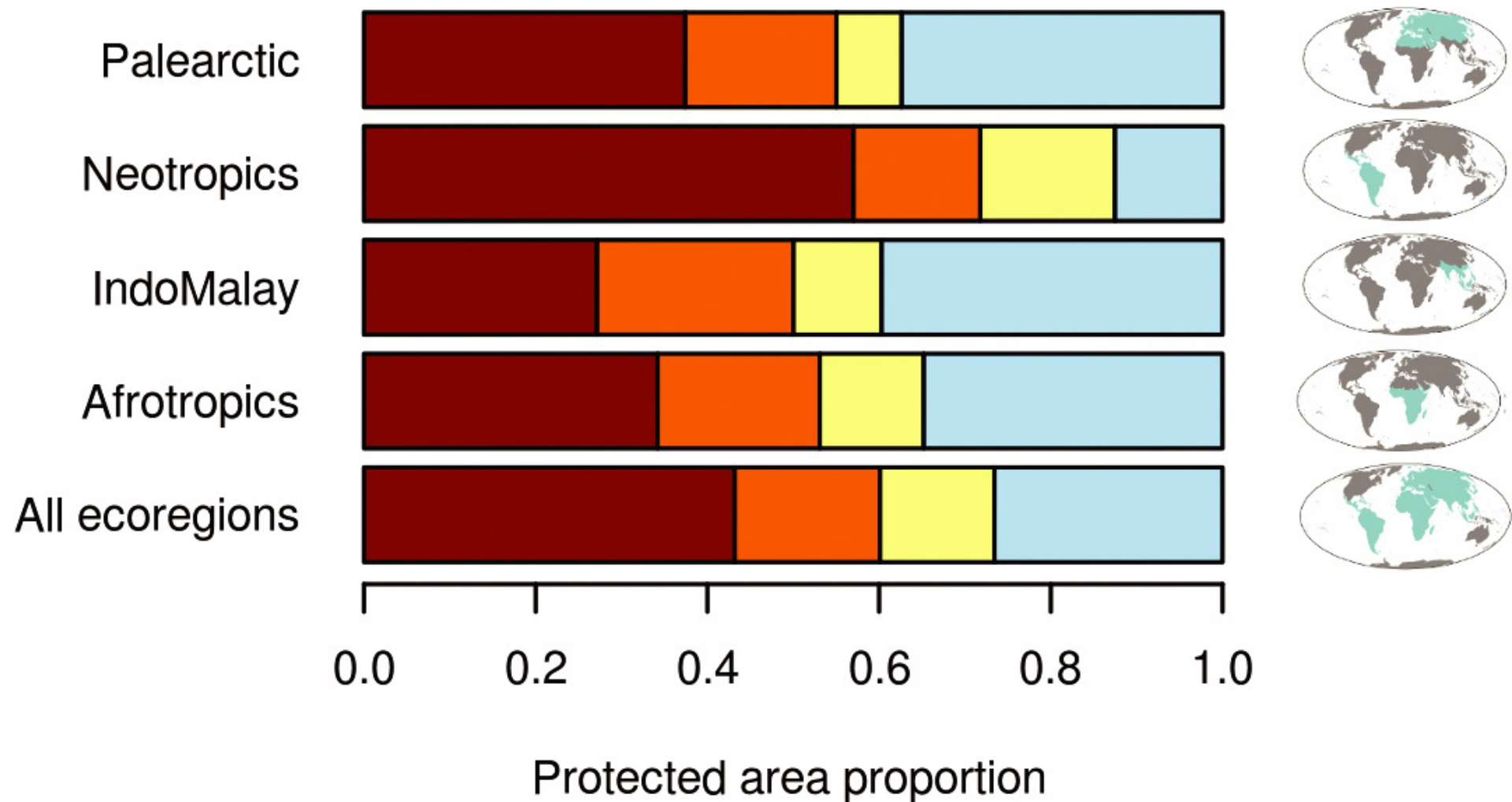


% of PAs assessed

>60%	30-60%	15-30%
0-15%	0%	



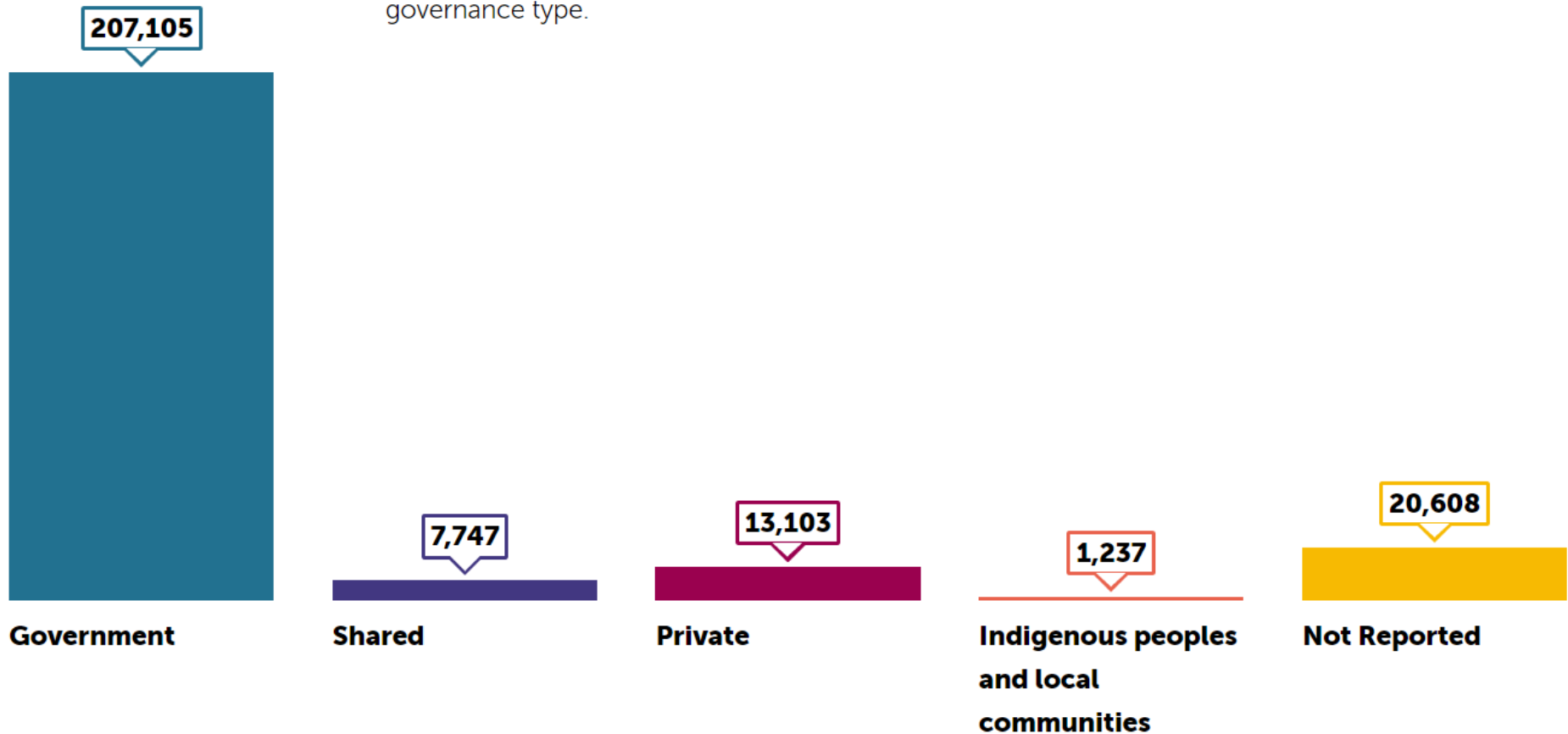
■ Inadequate
 ■ Adequate staff
 ■ Adequate budget
 ■ Both adequate





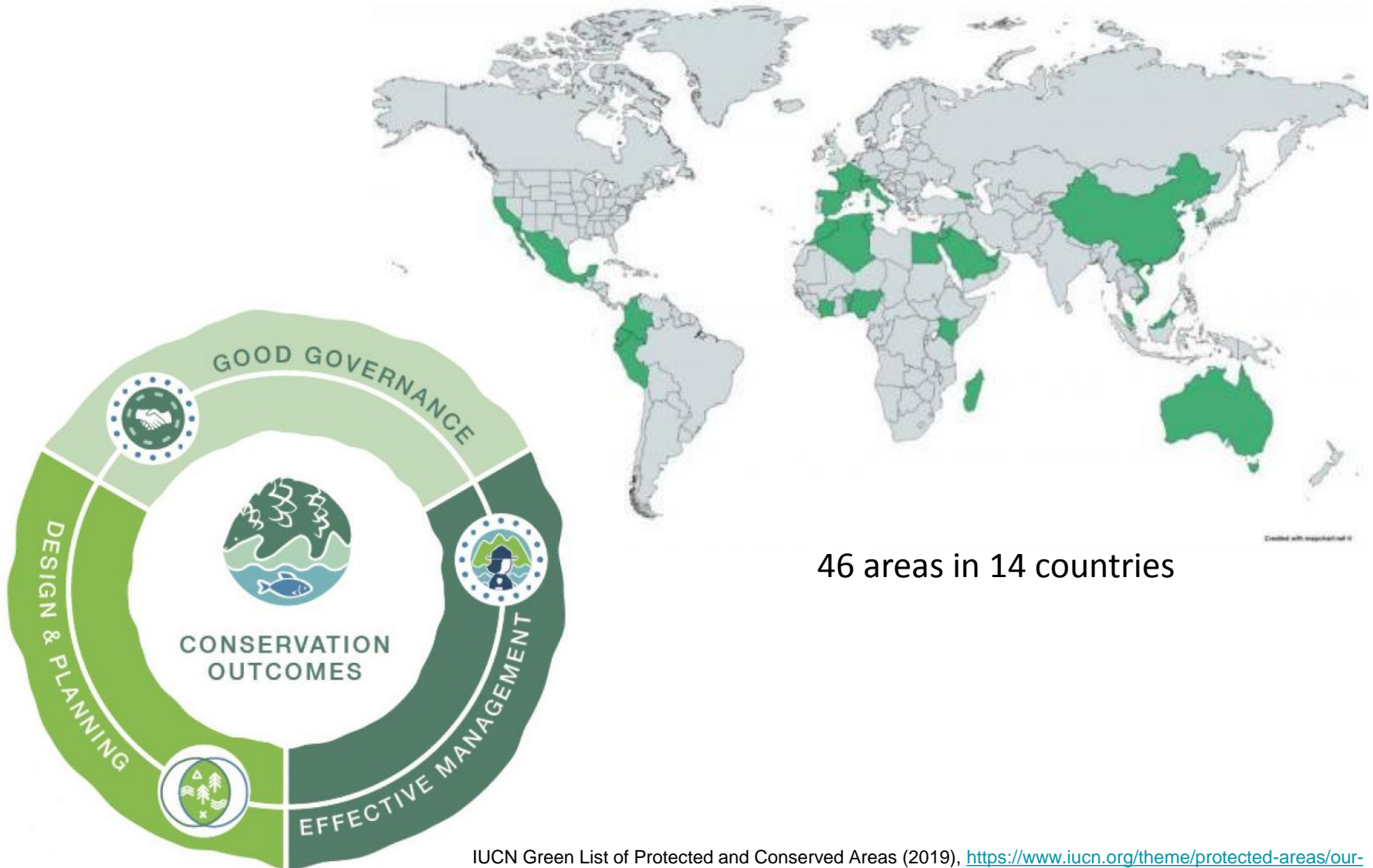
PA Governance Diversity

Number of protected areas reported in the WDPA under each IUCN governance type.





IUCN Green List of Protected and Conserved Areas





Integration into the wider landscape/seascape





Global progress on Target 11



10 per cent of marine areas conserved			
17 per cent of terrestrial areas conserved			
Areas of importance conserved			
Protected areas, ecologically representative			
Protected areas, effectively and equitably managed			
Protected areas, well-connected and integrated			



Thank You

