

EXPRESSION OF INTEREST FOR FINANCIAL SUPPORT OF PROTECTED AREAS

SECTION I: BASIC INFORMATION

COUNTRY/COUNTRIES

Burkina Faso

PROJECT TITLE

Capacity development of territorial collectivities for sustainable management of protected areas in the context of decentralization in Burkina Faso

CONTACT INFORMATION

National Focal Point for the CBD and National Office of Protected Areas.

Contacts :

- Soumayila Bancé, e-mail : bancebo@yahoo.fr ; Tel: +226 50 313166

Prosper Sawadogo, e-mail : prosper_sawadogo@yahoo.fr ; Tel: +226 50 356415

ABSTRACT

Please briefly explain in two to three sentences why this project is important to sustaining biodiversity, addressing climate change and securing livelihoods.

The implementation of the Programme of Work on Protected Areas (PoWPA) is expected to contribute to a deep analysis of the national protected areas (PAs) system in order to improve its participatory management, a political option set by the government for the conservation and sustainable use of natural resources. The priority activities identified by stakeholders for this application are 3.1.2, 3.1.1, 1.1.4, 2.2.2, and 3.1.6. It is expected that their effective implementation will contribute significantly to the management and conservation of forest protected areas and wild life resources as stated in the National Framework Programme (PCGDRFF, 2006-2015), and also the Institutional and legislative reform for the decentralized management of Natural resources (PRIJD-SF, 2006) (www.environnement.gov.bf)¹. The main expected outcomes of the identified priority activities are indicated in Table I:

Table I : Expected outcomes, indicators, risk and mitigation measures

Expected outcomes	Indicators	Risk associated with attaining the indicator (high, medium, or low)	Risk mitigation measures
Outcome <u>1</u> : The important data on the	1.1 Month 12 : The study report is	<u>Low</u> : Low availability of qualified experts	An open hiring process will be used at international level. In addition the

¹ www.environnement.gov.bf

contribution (current and potential) of PA to national economy and poverty reduction are available	validated by all the stakeholders		consultants will be selected with the support of UNDP and IUCN (through WCPA). The support of PoWPA Global Project Manager in the identification of suitable experts will be requested if necessary
	1.2 Month 12 to 16 : A communication campaign raised awareness for the integration of PA in the Strategic Framework for poverty reduction	Low: The nation network of communication doesn't cover the whole territory every time	Local radios will be involved, communication team will also visit the region of concentration of PAs
<u>Outcome 2</u> : All the protected areas have appropriate legal status	2.1 by end of Month 08, an evaluation document is validated and made available to the stakeholders	<u>Medium</u> : Necessary Administrative procedures for the adoption of the legal documents may be slow	The direct involvement and commitment of main stakeholders (SP-CONEDD, DGCN/DFC, OFINAP, DiFor, INERA, ONTB, General secretaries of the different Ministries, etc.) will facilitate the lobbying. Also this is a major gaps of the PCGDRF which has been approved by all the stakeholders Two procedures are possible: (i) For national parks and total reserves a law passed by National Assembly is required (ii) For the other reserves decrees from President are required.
<u>Outcome 3</u> : 10 000 ha of New Communal PAs are set-up and effectively managed by decentralized local authorities and communities (Regions and communes)	3.1 Month 06:a Capacity building plan 3.2 Month 8 : Training Sessions 3.3 Month 10 : assessment of the level of integration of the PA co-management principles in the development planning process	<u>Low</u> : Low availability of qualified experts	An open hiring process will be used at international level. In addition the consultants will be selected with the support of UNDP- IUCN. The support of PoWPA Global Project Manager in the identification of suitable experts will be requested if necessary
Outcome 4 : The capacity of 25 000 Leaders and actors of 13 administrative regions are developed for PAs (buffer zones, communal forests, sacred forests,	Month 2 to 6: Seminaries of education of stakeholders of PAs management	Low : few engagement of stakeholders	Large pre information of Regional Counsellors, Mayors and Traditional Leaders

ZOVIC) management			
Outcome 5 : 45 000 ha of buffer zones, 5 000 ha of existing Communal PAs and 3 000 ha of sacred forests are managed and restored with endangered floristic peaces	5.1 Month 11 : assessment and evaluation of Communal PAs and sacred forests 5.2 : Month 14 : Management of Communal PAs and sacred forests 5.3 : Month 17 : Restoration of Communal PAs and sacred forests	Low : Few existing documentation on Communal PAs and sacred forests	Inventory and consultation of all documentation centers and publications on Communal PAs and sacred forests
Outcome 6 : Rule, institutional and technical tools necessary for the decentralized management of the forest and faunal resources are popularized and/or process of elaboration is engaged and knows an effective application	6.1 Month 2 to 6 : Diffusion of existing rules, administrative and technical tools for PAs creation and management to stakeholders	Low : Inexistence of all necessary tools	Consult all State official journals

GEOGRAPHIC SCALE

Please select one of the following.

<input type="checkbox"/>	Subnational
<input checked="" type="checkbox"/>	National
<input type="checkbox"/>	Multinational (transboundary)

SCOPE

Please select all that apply to this project.

<input checked="" type="checkbox"/>	Creating new protected area(s)
<input checked="" type="checkbox"/>	Strengthening the management of existing protected area(s)
<input checked="" type="checkbox"/>	Improving the enabling environment for protected areas

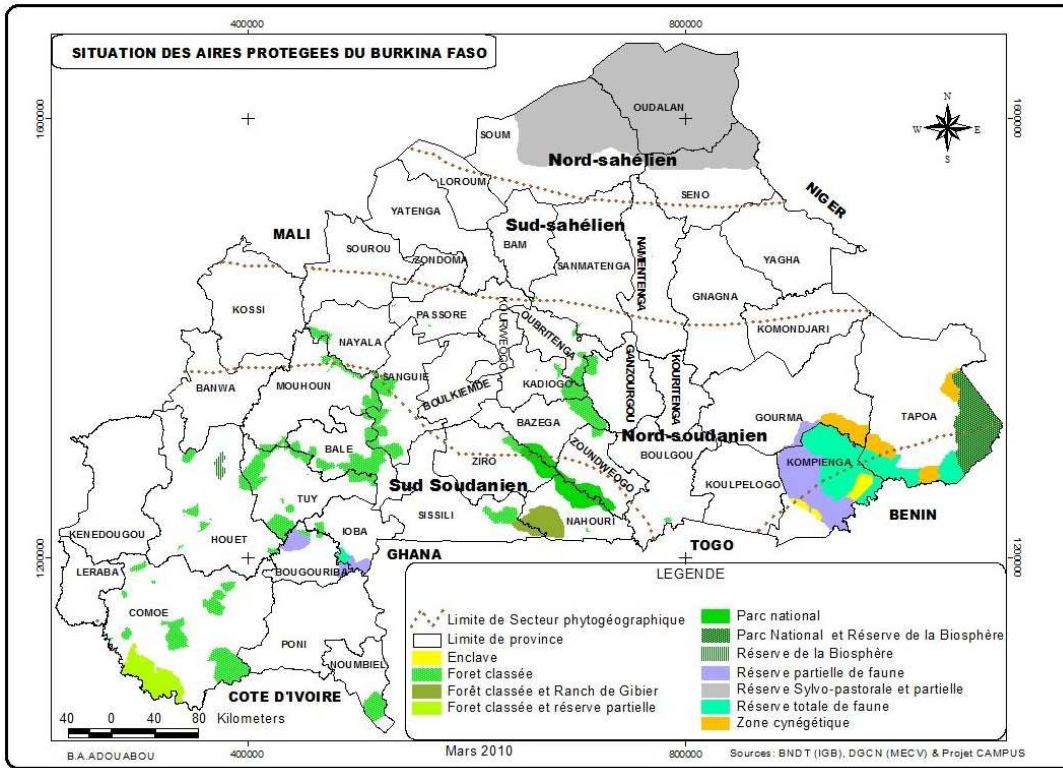
LINKS WITH THE WDPA (the World Database on Protected Areas)

If this project's scope involves **strengthening the management of existing protected area(s)**, If possible, include the [URL](http://protectedplanet.net) links to protectedplanet.net of all the areas involved in this project. If the area(s) are not registered in the WDPA, please indicate the complete name(s).

The scope of this project is Buffer zones of Classified Forest, Faunal Reserve, National Park and Sacred forests

MAPS

If possible, in addition to this EOI, please send high quality maps situating the project area.



Map 1: Situation of Protected Areas of Burkina Faso

Name of attachment	Description
1.	
2.	
3.	
4.	
5.	

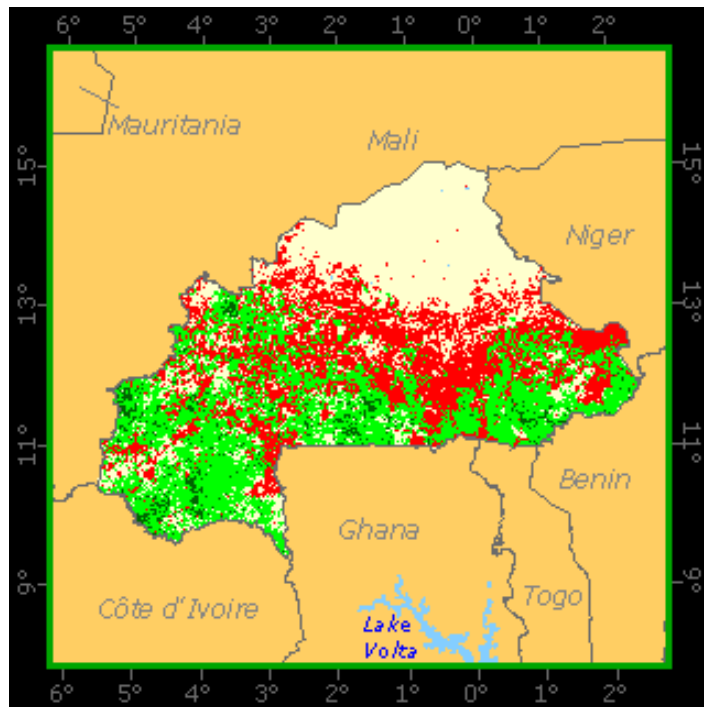
Add additional rows as needed.

If possible, please also indicate latitude and longitude coordinates best situating the project. For help situating your project see: www.getlatlon.com.

Latitude

Longitude

The map below shows the latitude and the longitude coordinates of forest areas (green color) of Burkina Faso.



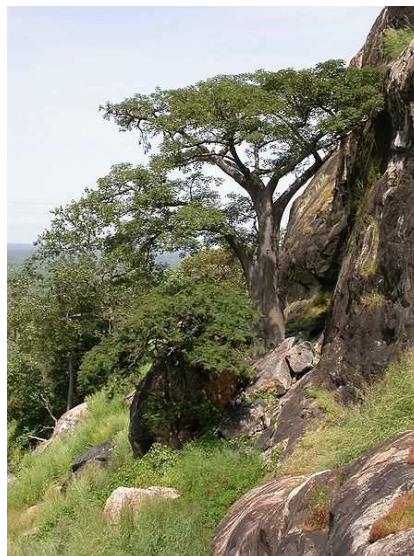
Source : FAO, 2000

IMAGES

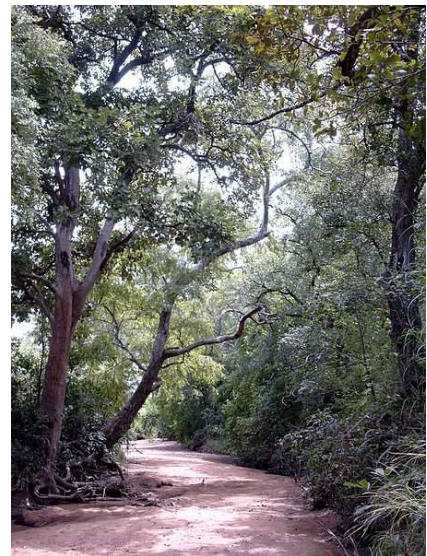
If possible, please send, along with this EOI, at least three high quality images and any additional media (videos, web pages, Wikipedia entry, brochure, etc.) of the project. Please note that images will be used to profile your Expression of Interest on the CBD LifeWeb Website and may also be used for other CBD LifeWeb communication materials. Please note that at least one image is required.



Niangoloko Forest WP30 SDr9668.JPG
Autor : Stefan Dressler



Pic de Nahouri forest MS4263.jpg
Autor : Marco Schmidt



Fichier:Pama reserve MS1150.jpg
Autor : Marco Schmidt

Source: Wikipedia

	Name of attachment	Description
1.	Niangoloko's forest	An ecological and economical significant potential for riparian populations, the country and the region
2.	Pic de Nahouri forest	An ecological reserve and important ecotouristic potential for the country
3.	Pama reserve	Temporary watercourse in Pama reserve,

SECTION II: PROJECT DESCRIPTION

LOCAL CONTEXT AND PROBLEMS TO BE ADDRESSED BY THE PROJECT

Please describe the context and challenges (including [threats to biodiversity](#)) in the area. You are welcome to attach supporting documents.

Burkina Faso is a Sahelian and Landlocked country, located in Western Africa in the Niger belt and at the border of the Sahara. The country covers an area of 273.187 sq km, bordering Mali in the North and West, Ivory Coast, Ghana, Togo and Benin in the South, and Niger in the East. Although the country does not have direct access to sea, it is deeply streamed in the Regional space, its territory being shared between the hydro graphic landscapes of Comoé, Niger, Nakambé and Mouhoun.



Location of Burkina Faso (red colored map)

In terms of economy, the population well-being indicators are below the average vales of Africa. The Human Development Indicator is estimated at 0.342 (UNDP 2006) and the net income per capita is \$400 dollars. It is ranked as a Least Developed Country.

In terms of agro-climate, there are two (02) domains and four (04) sectors:

The Sudanian domain includes:

- The South Sudanian sector characterized by an average annual rainfall more than 900 mm. It is the most humid zone of the country, covering 36% of the total area and having 20 inhabitants per sq Km. It is also considered to be the destination area of migrants, mainly the Mossi and Fulani coming from the Northern part of the country. In these areas, the environment is threatened by the migration pressure and the extensive production systems;

- The North Sudanian sector covering 33.7% of the total area with an annual rainfall varying from 750 to 900 mm. It represents 32% of the potential crop land with 50% of the population;

The Sahelian domain includes:

- The strict Sahelian sector in the extreme North of the country characterized by an annual rainfall varying from 400 to 600 mm. It covers 11% of the country area. The population density is estimated at 5 inhabitants per sq km. It is mainly a pastoral zone;

- The sub sahelian sector located between the North Sudanian and the Strict Sahelian sectors; its rainfall varies from 600 to 750 mm. The population density is estimated at 36 to 50 inhabitants per sq km, corresponding to 19% of the total population.

Aware of the importance of the biodiversity conservation, the country ratified the Convention on Biological

Diversity (CBD) in September 1993 and has set necessary instruments facilitating its implementation. Burkina Faso confirmed its perception of the importance of PAs as strategic areas for the conservation and sustainable use of biodiversity through its commitment to the Programme of Work on Protected Areas (PoWPA). This programme, hence, strengthens the country's capacity in implementing its Strategy and Actions Plan on biodiversity. In addition the Project is in harmony with the general principles on decentralization, in particular the decentralization law N° 055-2004/AN of 2004 of December 24 adopted General Code of Territorial Collectivities in Burkina Faso, which sanctions the right of the territorial collectivities (areas and communes) to manage and manage freely their own businesses, in particular those linked to natural resources.

Despite the important efforts initiated with the support of its technical and financial partners, the civil society, the private and research sectors, the country is still facing a rapid population growth (2,4% per year), the current population (2006) being estimated at more than 13 millions increasing pressure on land and related resources. The economy is mainly based on the exploitation of natural resources (agriculture, livestock, mining, traditional energy, etc.). This, in turn generated high pressure on these resources, which added to the climatic change cause an increasing erosion of the natural capital. Burkina Faso is facing important threats including land degradation, vegetation and forests degradation, climate change, reduction of the biodiversity capital and the accelerated development of urban environmental problems. The protected areas (PA) represent more than 16% of the territory, and constitute the biodiversity concentration areas in terms of species (fauna and flora) as well as ecosystems. The national PA system is a network of parks, total and partial reserves, gazetted forests and community reserves. The wildlife is composed of more than 128 mammalian species including more than 477 bird species and 60 reptiles and amphibians. Including, some emblematic ones such as Elephant (*Loxodonta africana*), lion (*Panthera leo*), buffalo (*Syncerus caffer brachyceros*) and roan antelope (*Hippotragus equinus*) are well represented. Forest land covers more than 16.620.000 Ha, including 880.000 Ha represent gazetted forests (Parkan, 1986) which contribution to the GDP is estimated at 1%.

The threats and constraints to PA management system were identified and described in the PCGRFF and the CPP Documents. They are summarized in this section with reference to the results of the initial analysis PoWPA. There are three categories:

Threat 1: *Agricultural encroachments*

More of 80% of the population of Burkina Faso lives on agriculture. The majority of PAs are located in the most agricultural endowed zones (East, South, South-West and West), and consequently are facing high pressure of agricultural land demand. The introduction of cash crops such as cotton using large areas has contributed to increase this deficit of cropland. The consequence is permanent risks of forests clearing for agriculture in the vicinity and more often within the PAs.

Farmers are still using extensive production systems and fire clearing while pastoralism remains the major livestock traditional production system. These production systems bring about erosion and land degradation around the PAs, hence increasing the vulnerability of the giving ecosystems.

Threat 2: *Fragmentation of ecosystems by illegal and/or non rational exploitation, even excessive exploitation of natural resources*

(Siltation) silting and pollutions of water resources

We noticed the utilization of more and more chemical products in some crops production (cotton and legumes) and non rational exploitation of lowlands and rivers during the dry season. These practices induce siltation and pollutions of water resources considered as the central points of the ecosystems balance in the

PAs.

Transhumance and settlements

The migration of population to the vicinity of PAs is associated with important move of flocks and herds through transhumance or settlements. The majority of PAs are also located at borders of the country. Hence, they are continuously facing the consequences of transnational transhumance. This co-existence represents an important threat to PAS (disturbance of wildlife, competition over the use of feed resources, risks of zoonosis contamination, risks of poisoning of wild carnivores by herders, poaching, etc.).

Poaching

Poaching is still an important threat as favored by low operational capacity of the institutions in charge of PA management and also by the low income and limited alternatives among surrounding populations. Other factors like the easy availability of firearms, the development of numerous channels for the marketing of hunting products (bushmeat, wildlife by-products), and the high level of demand for bushmeat are also contributing. As a consequence, several species are threatened or disappeared.

Over exploitation of forest products

The excessive wood cutting continues to threaten severely the biodiversity of the PAs. The forest products concerned are wood, charcoal, and non timber products (fruits, leaves, roots, etc.) used for human, livestock feeding and handcraft. Several endemic species of the PAs are threatened by these exploitations.

The uncontrolled bush fires

Despite the efforts made by government to sensitize and raise awareness of all the population since 1980', uncontrolled bush fires are still reported. Most of them occur towards the end of the dry season when vegetation is too dry. . These types of fires have severe consequences of the capacity of resilience of biotopes and species and contribute to the destruction of a major part of small wildlife and micro fauna.

Threat 3: Acceleration of the degradation of the climate conditions

The climate change and variability add up to the consequences of unsustainable practices related to natural resources exploitation by local communities. The recurrent droughts, flooding decreasing rainfall and increasing temperature are threatening the populations' livelihoods, species and ecosystems.

The support of LifeWeb Initiative is expected to contribute to a deep analysis of the national PA system in order to improve its participatory management, a political option set by the government for the conservation and sustainable use of natural resources. The priority activities identified by stakeholders for this application are 3.1.2, 3.1.1, 1.1.4, 4.1.2, 2.1.2, 2.2.3, 2.2.4. It is expected that their effective implementation will contribute significantly to the management of forest and wild life resources as stated in the National Framework Programme (PCGRFF, 2006-2015), and also the Institutional and legislative reform for the decentralized management of Natural resources (PRIJD-SF, 2006) .

ECOLOGICAL CONTRIBUTION

Please indicate the extent to which the area(s) is/are ecological priority(s) for the national protected area system, based on contribution to ecological representation, connectivity, viability and/or irreplaceability within the protected area system. If available, please refer to the national [ecological gap analysis](#) or other geographic prioritisation exercises and attach supporting documents.

The national PA system (NPAS) covers an area of 4.3 million ha, representing nearly 16% of the territory.² The largest PA is a partial reserve located in the Sahel and bordering Mali and Niger with an area of 1, 6 million ha, or 5% of the country. The NPAS is composed of:

²

MECV, 2006. Programme Cadre de Gestion des Ressources forestières et faunique (PCGRFF).

- Two (02) national parks (The national park of W³, the national park of Po) ;
- Four (04) total reserves (Arly, Singou, Madjoari et Bontioli) ;
- Six (06) partial reserves (Arly, Koutiagou, Pama, Bontioloi, Nabéré, Comoé-Léraba, and the sylvopastoral and partial reserve of wildlife of the Sahel ;
- One (01) Ranch of wildlife (Nazinga) ;
- Two (02) Biosphere reserves (park W, and mare aux hippopotames) ;

Fifteen (15) Ramsar sites (Mare aux hippopotames, mare Oursi and park W, Barrage de Bagre, Barrage de la Komienga, Barrage de la Tapoa, Cône d'épandage de Banh, Forêt Galerie de Léra (Nan, Tchêfoun), La Forêt Classée et Réserve Partielle de Faune Comoé-Léraba, La Vallée du Sourou, Lac Bam, Lac de Tingrela, Lac Dem, Lac Higa et Réserve Totale de Faune d'Arly (Parc National d'Arly) ;

- Seventy two (72) gazetted forests including twelve (12) specifically managed as wildlife reserve.

There are developed setting-up sites managed by local populations which contribute significantly to the conservation of biodiversity. They are known as village forests, sacred forests, ZOVIC, sanctuaries, refuges, etc. these areas are part of village or communes territories not totally identified nor gazetted. The project will in long term enable Burkina Faso to maintain from now to 2015 a complete national system, managed well and ecologically representative of protected areas for national and international interest, contributing to biodiversity conservation, poverty reduction and climate change mitigation.

OBJECTIVES AND RESULTS

Please provide a brief summary of the project's objectives, in two to three sentences.

This project will strengthen the capacities for the implementation of the Biodiversity National Strategy and the National Action Plan of the Convention on Biodiversity. The project will also have to allow Burkina Faso to ensure up to 2015 to complete and ecologically manage the national system of protected areas

Please provide a brief description of each objective and, if possible, estimate of funding required for each, as well as the overall expected results. Please add or delete rows for objectives, as needed. You may include further information in annex if appropriate.

OBJECTIVES	FUNDING NEEDED* (US \$)	EXPECTED RESULT
3.1.2 Assess PA contributions to national economy	300 000	<u>Outcome 1:</u> The important data on the contribution (current and potential) of PA to national economy and poverty reduction are available. This evaluation will be done in the most representative PAs types, specifically where detailed information exist already. This includes Park W, Hunting Zones of the East, ranching zones and Forest mainly managed for firewood provision.
3.1.1 Identify enabling environment gaps	400 000	<u>Outcome 2:</u> All the protected areas have appropriate legal status. This focuses on protected areas which status are not conform to their current management regime. Examples are (i) Arly reserve which is actually managed as national park while having a legal status of total reserve, (ii) Tagou-Tandangou is a hunting zone

³

The park W-Burkina is also a transboundary biosphere reserve since 2002 and a Ramsar site

		integrated in the Arly complex while managed as official protected area, (iii) Sahelian sylvopastoral zone tailored for concessionaires (without,), village forests, sacred forests, ZOVIC, sanctuaries, refuges, etc
<u>1.1.4</u> Assess governance types	3 200 000	<u>Outcome 3:</u> New Communal PAs are set-up and effectively managed by decentralized local authorities (Regions and communes). It should be pointed out that the new decentralization law encourages every municipality to promote “municipal or regional protected areas”. But the local authorities have not capacity to perform such ambitions.
<u>2.2.2</u> Increase the participation of the local communities in protected areas management	3 100 000	<u>Outcome 4:</u> Management of existing protected areas, such buffer zones, Communal PAs and, sacred forests ZOVIC, sanctuaries, refuges, is Strengthen
<u>2.2.4</u> Promote an enabling environment (legislation, administrative and technical capacities) for the effective involvement of local communities and relevant stakeholders in decision making, and the development of their capacities and opportunities to establish and manage protected areas, including community-conserved and private protected areas.	500 000	<u>Outcome 5:</u> The regulatory and technical capacity of political, administrative, leaders and actors of 13 administrative regions are developed for PAs (buffer zones, communal forests, sacred forests, ZOVIC) management
<u>3.1.6</u> : Identify and establish positive incentives that support the integrity and maintenance of protected areas and the involvement of local communities and stakeholders in conservation	500 000	<u>Outcome 6:</u> The contribution of the protected areas to the means of subsistence of the populations living along the protected areas is increased through the effective management of the areas of conservation and the sustainable use of the biological resources (non wooden product, faunal and the development of the beekeeping

*Please provide amounts in USD or Euros and specify the currency.

TIMEFRAME

Please indicate the estimated number of years required to implement the project.

5 years

FUNDING BREAKDOWN

CATEGORIES	INSTRUCTIONS	SOURCE (S)	AMOUNT (US \$)
TOTAL PROJECT COST	Please indicate the total budget required for this project.		\$US 8,000,000
Domestic funding secured	Please indicate any funding that has been committed from the	Government (In-kind contribution)	\$US 200,000
		National Office of	\$US 150,000

	national budget and other domestic public sources, domestic private foundations and NGOs, as well as in-country financing mechanisms such as trust funds, park entry fees, water funds, tourism taxes, development fees, etc.	Protected Areas (OFINAP)	
International funding secured	Please indicate any funding that has been committed from international sources, including the GEF, multilateral and bilateral donors, international foundations and international NGOs.	GEF-5 (STAR allocation)	\$US 200,000
AMOUNT OF FUNDING REQUESTED THROUGH CBD LIFEWEB	This amount should be equivalent to total project cost minus all secured funding. If not, please explain.		\$US 7,450,000

INSTITUTIONAL CONTEXT

Please indicate the partners to be involved in this project and their roles.

PARTNER NAME	ROLE IN THIS PROJECT
SP-CONEDD	Coordinated the analysis of PAs status and priority setting Head of the supervising committee
OFINAP	Participated in the analysis and priority setting Project Implementing agency
Local Structures of MEDD	Participated in the initial analysis and priority setting Contribution to the implementation of project activities at PA level Beneficiaries of the training sessions
Private enterprises (Concessionaires, tourism)	Participated in the initial analysis and priority setting Hunting zones Managers

ECOSYSTEM GOODS, SERVICES AND LIVELIHOODS

Please provide a brief explanation only for the ecosystem goods and services applicable to this project.

Climate Change adaptation (e.g.: storm barriers, flood control, protection against sea level rise, etc.)

Direct impact

Climate change mitigation (e.g.: carbon sequestration, reducing use of fossil fuels, etc.)

If carbon sequestration is applicable to this project, please also indicate any existing information about carbon or carbon equivalent values existing in this area and how this project will ensure its storage. If specific figures are currently available, please include them here.

Carbon sequestration : by basing on studies done in Burkina Faso the capacity of detention of the carbon, which the project will generate on the whole territory will be of the order from 23 t/ha to 83 t/ha depending on climatic zones

Cultural and spiritual access

The project will preserve and increase the socio-cultural manners of the protected areas and the products that they supply, in particular the tales and the legends, songs and poetries, masks, small business sector(crafts), customary utilisation of forests, etc.

Food security

The contribution of biological resources to the food safety (fruits, others comestibles organs of the trees, meat, fishes) to the nutrition will be safeguarded and increased

Freshwater security

Fresh water stocks and flow will be protected and preserved by forests galleries

Human Health (e.g. regulating the spread of disease)

The preservation of the biological variety of the protected areas will more allow the populations to insure their care with medicinal plants and medical products from animals

Income generation (e.g. from tourism, sustainable resource harvesting, etc)

The tourism of vision and the sport tourism will be developed because of in the health found by the ecosystems and the diversity and the abundance of the wild fauna

Optional: Please indicate any additional information and attach supporting documents.

SECTION III: LINKS TO THE CBD PROGRAMME OF WORK ON PROTECTED AREAS

IMPLEMENTATION OF THE CBD PROGRAMME OF WORK ON PROTECTED AREAS

Please indicate how this project contributes to the implementation of the CBD Programme of Work on Protected Areas (PoWPA) and how it meets the PoWPA goals.

The priority activities identified by stakeholders for this project, including those of POWPA namely 3.1.1, 3.1.2, 1.1.4, 4.1.2, 2.1.2, 2.2.3 and 2.2.4. Their effective implementation will contribute significantly to the management of national protected areas and so meet the PoWPA goals

NATIONAL PLANNING

In compliance with COP10 decision 31, please indicate any linkages between this project and priorities identified through other national sustainable development planning processes, including [National Biodiversity Action Plans](#), national REDD strategies, national climate adaptation planning, Poverty Reduction Planning (PRSPs), National Land-Use Planning, MDG planning, etc.

This project is strongly linked with following development planning instruments:

- National Biodiversity Strategy and Action Plans ;
- National strategy of accelerated growth and sustainable development ;
- Priority actions of the strategic framework of fight against poverty ;
- National policy of good governance ;
- Law on Code of territorial collectivities ;
- Guide for the creation of communal protected areas ;
- National adaptation programme to climate change ;
- National action plan to combat desertification ; etc.

FINANCIAL SUSTAINABILITY

Please indicate institutional commitments and/or [sustainable financing mechanisms](#) that will contribute to the project's sustainability. You are welcome to attach supporting documents.

The national PA system (NPAS) covers an area of 4.3 million ha, representing nearly 16% of the territory

There are developed setting-up sites managed by local populations which contribute significantly to the conservation of biodiversity. They are known as village forests, sacred forests, ZOVIC, sanctuaries, refuges, etc. these areas are part of village or communes territories not totally identified nor gazetted.

In response to the insufficiency of financial resources to conduct an appropriate management of PAs, Burkina Faso has initiated an important political and legal reform which improved the involvement of private sector and local communities around the PAs. Twelve Unities of Wildlife Conservation (UCF) were identified in 1996⁴ and a forestry code adopted in 1997.⁵ The forestry code defines the conditions of access and gives the legal background for the participation of private sector to PAs management contracts (*Concessions*). These UCF evolved recently into Unities of Protection and Conservation of Wildlife (UPC). Each UPC comprises one or several linked PAs. As such UPC are monitored and managed by a Conservator appointed by the government. However the effective management and commercial exploitation of the PAs are contracted to private companies (*Concessionaries*) which in return share the earnings with the government and local communities.

These reforms stress also the effective participation of all categories of stakeholders, specifically private sector and local communities based on the principles of equity and accountability regarding benefits sharing. In 2006, Burkina Faso has drafted a new programme (PCGDRFF) to more put the stress on practical orientations for the development of partnership "Government-Local communities-private sector".

In 2008, a National Office for PAs was created (OFINAP). It is a public company set to contribute to ensure an effective management of the NPAS. The specific mandate of the OFINAP is to contribute to the implementation of the orientations from the National Forest Policy as stated in the PCGDRF. Its specific missions include⁶:

- to ensure the sustainable management of the forests Owned either by State or decentralized territories.
- To enhance the participatory management of wildlife and forest resources
- To develop the partnership between Government, municipalities (decentralized territories bodies) and private sector
- To promote all type of wildlife and forest management aiming at the reduction of poverty
- To establish a financial system adapted for the accomplishment of its missions.

PARTICIPATION AND EQUITY

Please indicate how this project will contribute to the [full and effective participation](#) of indigenous and local communities and the equitable sharing of costs and benefits with indigenous and/or local communities.

Economic activities of more than 84% of the population depend on natural resources such as agriculture, livestock, forest products (traditional energy, non timber products), etc. In addition, the decentralization law confers to local community the responsibility to manage, conserve and sustainably use the natural resources of their territories. The sacred forests are initiated by the local communities and the project will help them to manage and conserve them. So, the local communities will not hesitate to participate in the

⁴ Law No 96-002 MEE/CAB

⁵ Law 006/97/ADP of 31 January 1997

⁶ Décret N° 2008-248/PRES/PM/MECV/MEF/MAHRH portent approbation des Statuts de l'Office national des Aires Protégées.

activities of the best management of the protected areas for their interest, as the benefits arising from the project belong to them. For example, such benefits are among others :

- The increase of the number of wild animals in the protected areas will make it possible for bordering populations to practice profitable village hunting ,
- The potentialities of non-wood products are many in the protected areas and the mobilization of the actors to develop them.

GOVERNANCE TYPES

If applicable, please explain how this project will contribute to a greater **diversity of governance types** in the national protected area system.

This project will contribute to a greater **diversity of governance types** in the national protected area system do to the texts of normalization (standardization) of the statutes of the protected areas, which will be elaborated or settled.

SECTION IV: ADDITIONAL PROJECT INFORMATION

Additional Information

Please indicate any additional information

Initial PoWPA analysis and priority setting outcomes for Burkina Faso project

Keywords

Please indicate five keywords that best describe your project (e.g. forest management, conservation of marine biodiversity, protection of endangered species, poverty reduction, etc.)

Forest management, in-water biodiversity, protection of endangered species, poverty reduction, food security, tourism, human health

Attachments

Please indicate the file names of any documents/annexes attached to this Expression of Interest.

	Name of attachment	Description
1.	Initial PoWPA analysis and priority setting outcomes Burkina Faso project	Activities proposed for the project have been identified by analysing state of implementation of the program of work for protected areas in Burkina Faso
2.		
3.		
4.		
5.		

Add additional rows as needed.