

International Plant Protection Convention:

what is it?

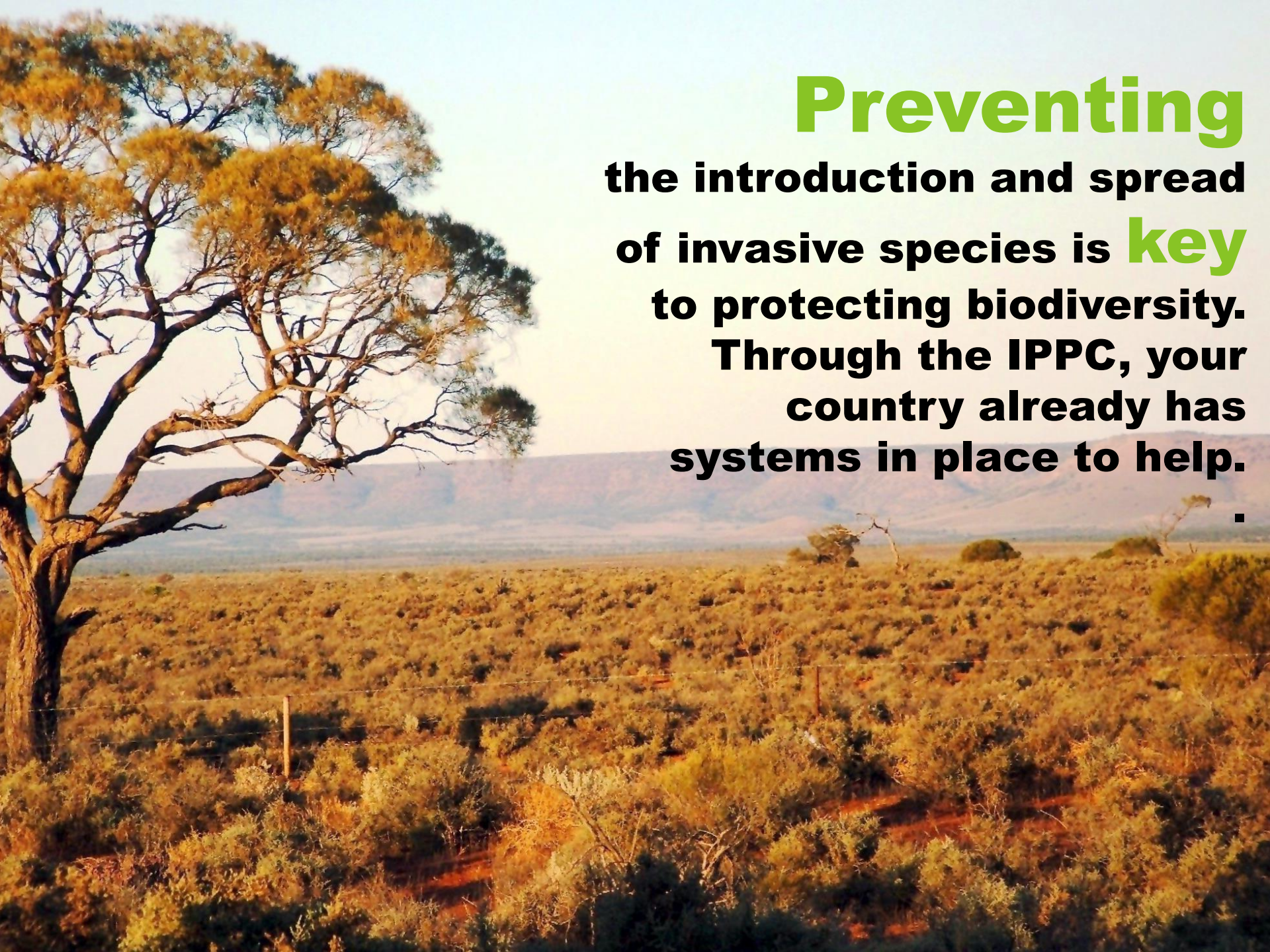
how can it help with invasive species and
biodiversity?

June 2014, Montreal



About me





Preventing
the introduction and spread
of invasive species is **key**
to protecting biodiversity.
Through the IPPC, your
country already has
systems in place to help.

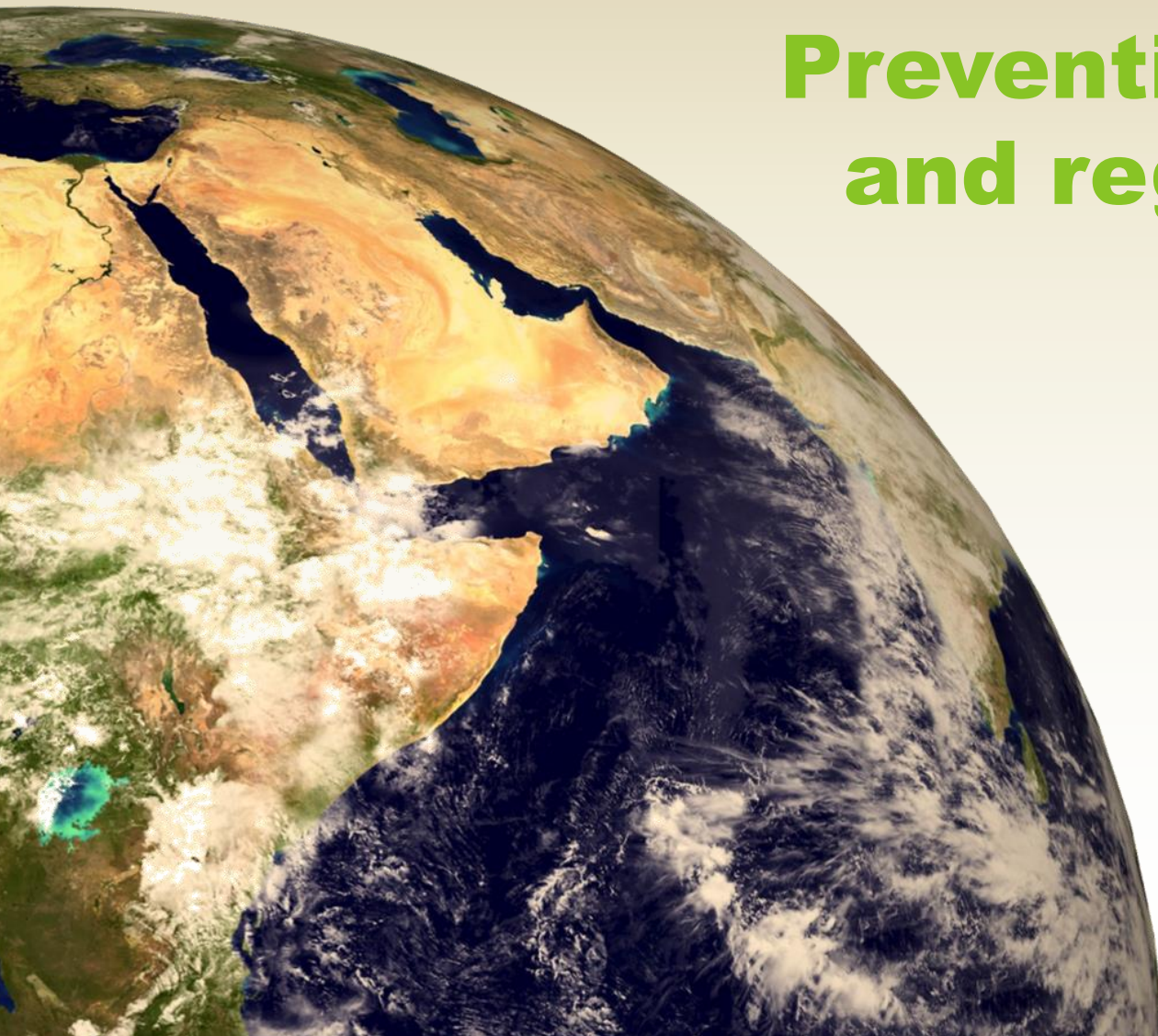
**The IPPC
focuses on
prevention and
control of species that
damage plants**



International Plant Protection Convention
Protecting the world's plant resources from pests



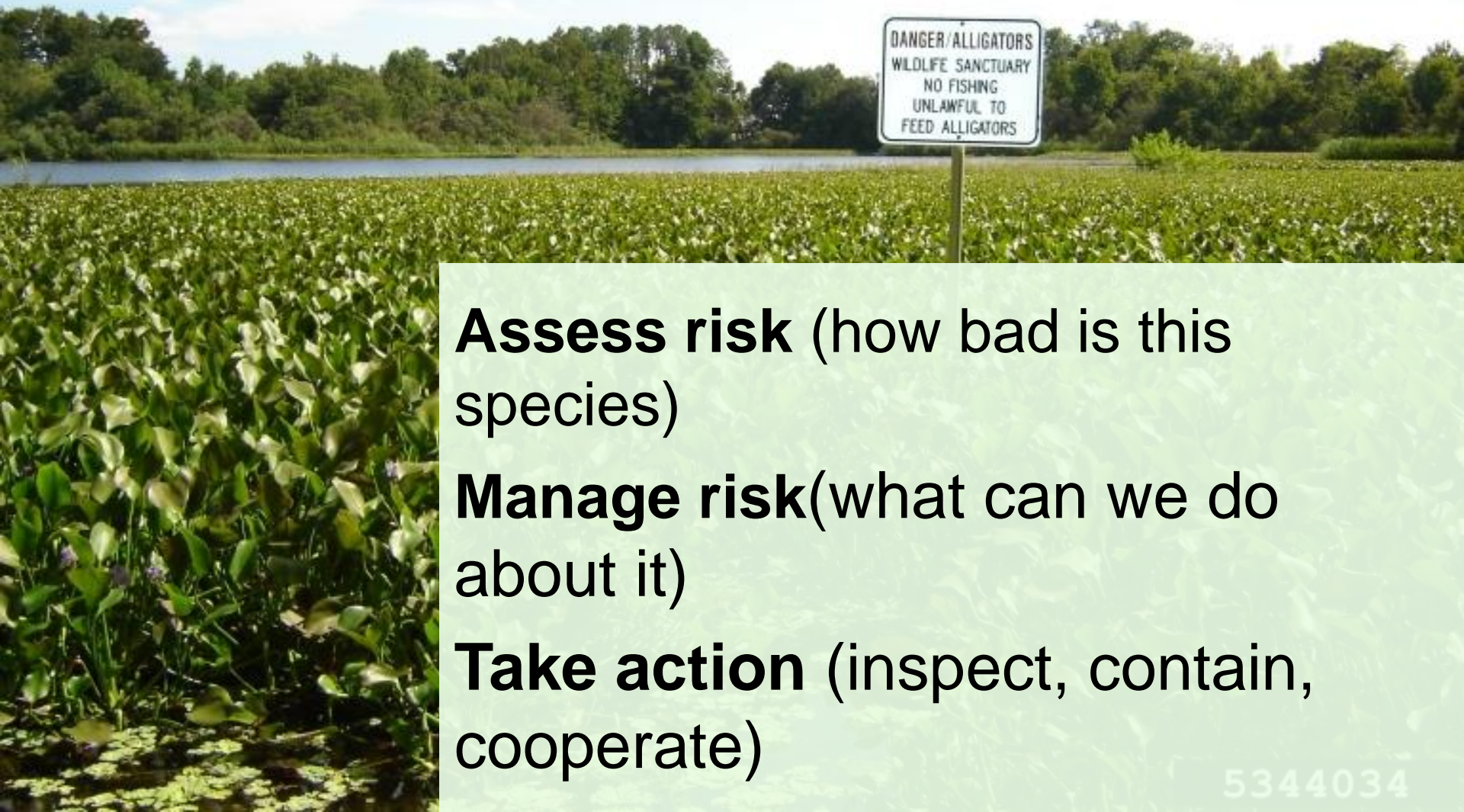
Prevention: identify and regulate risks





The CBD COP encouraged contracting parties to use IPPC tools for assessing and managing risks of invasive species

How to prevent invasive species from damaging biodiversity?



Assess risk (how bad is this species)

Manage risk(what can we do about it)

Take action (inspect, contain, cooperate)



Talk to your national plant protection organization (**NPPPO**)! www.ippc.int/countries about:

- **Risk assessment**
- **Surveillance**
- **Inspection**
- **Regulation**

IPPC Standards

Globally harmonized science-based guidelines recognized by the WTO-SPS agreement.

- **Surveillance**
- **Pest risk analysis**
- **Pest reporting**
- **Pest listing**
- **Plants for planting**
- **Biological control agents**
- **Relationships between CBD/IPPC terminology**
- **Guidance on environmental considerations in risk analysis**



Resources

Find your **IPPC contact point:**
www.ippc.int/countries

Phytosanitary Resources page:
www.phytosanitary.info

**includes risk analysis training
materials, diagnostic guides, and
pest information fact sheets**



**Thank you – together we can **prevent
the introduction and spread** of
invasive species (pests of plants)!**

**Sonya Hammons
Capacity Development Programme Officer
IPPC Secretariat, FAO
Rome, Italy**

**Sonya.Hammons@fao.org
www.ippc.int**