

At the coalface: Experiences from the GEF biodiversity portfolio

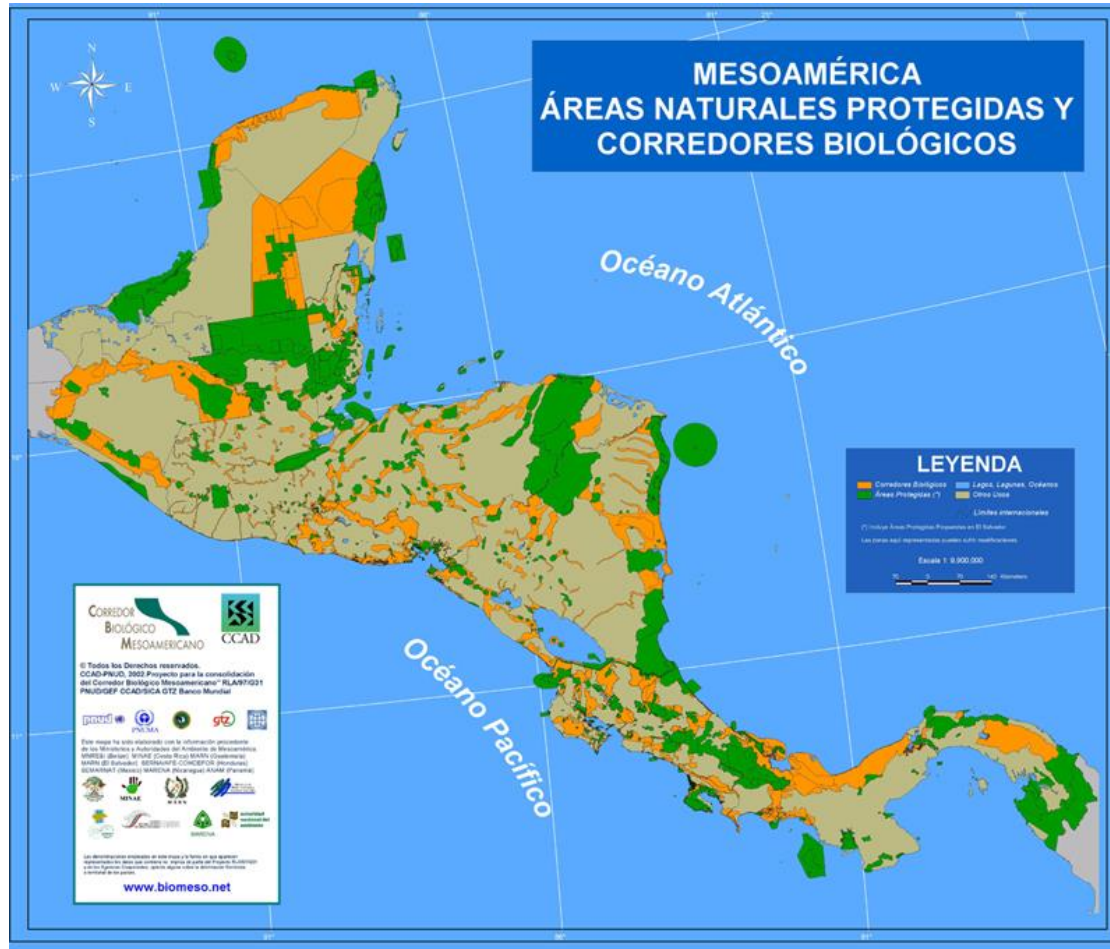
Mark Zimsky

GEF Biodiversity Coordinator, Senior Biodiversity Specialist
Regional Program Manager, Latin America



GLOBAL ENVIRONMENT FACILITY
INVESTING IN OUR PLANET

Back to the future: mainstreaming has deep roots in the GEF



GEF funding of mainstreaming

Policy and regulatory frameworks: subsidies and incentives

Spatial and land-use planning

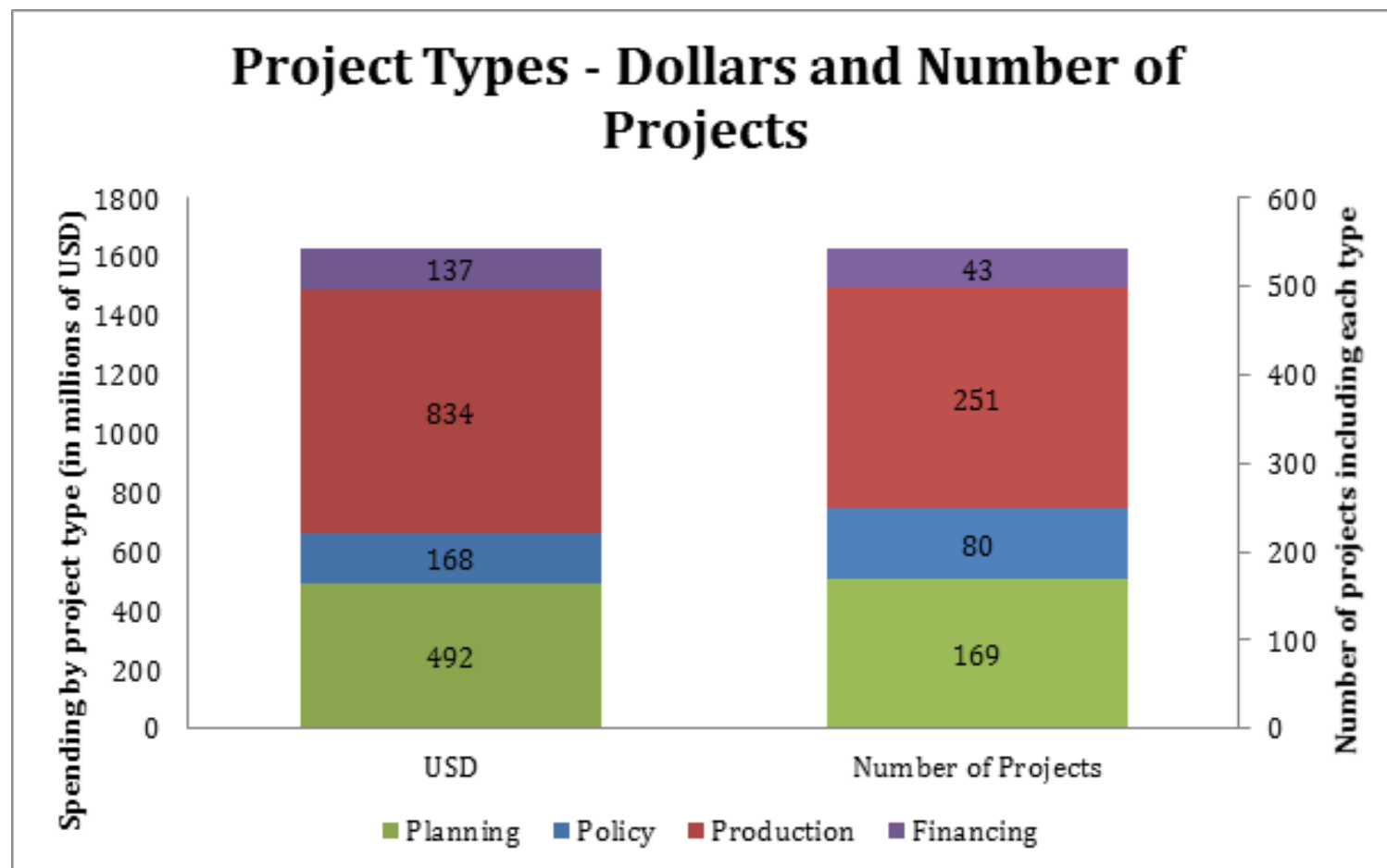
Improving and changing production practices: agriculture, forestry, fisheries, tourism, extractive industries (oil, gas, and mining)

Financial mechanisms



GLOBAL ENVIRONMENT FACILITY
INVESTING IN OUR PLANET

GEF mainstreaming by the numbers: what countries prioritized from 2004-2014



GLOBAL ENVIRONMENT FACILITY
INVESTING IN OUR PLANET

GEF mainstreaming by the numbers: \$ invested

- GEF3 (2002-2006): ~65% (protected areas), ~35% (mainstreaming)
- GEF 5 (2010-2014): ~55% (protected areas), ~45% (mainstreaming)
- 2004-2014: 327 mainstreaming projects totaling \$1.6 billion leveraging \$5.2 billion in cofinancing



GLOBAL ENVIRONMENT FACILITY
INVESTING IN OUR PLANET

Mainstreaming Defined: 2005

Working Paper 20
November 2005



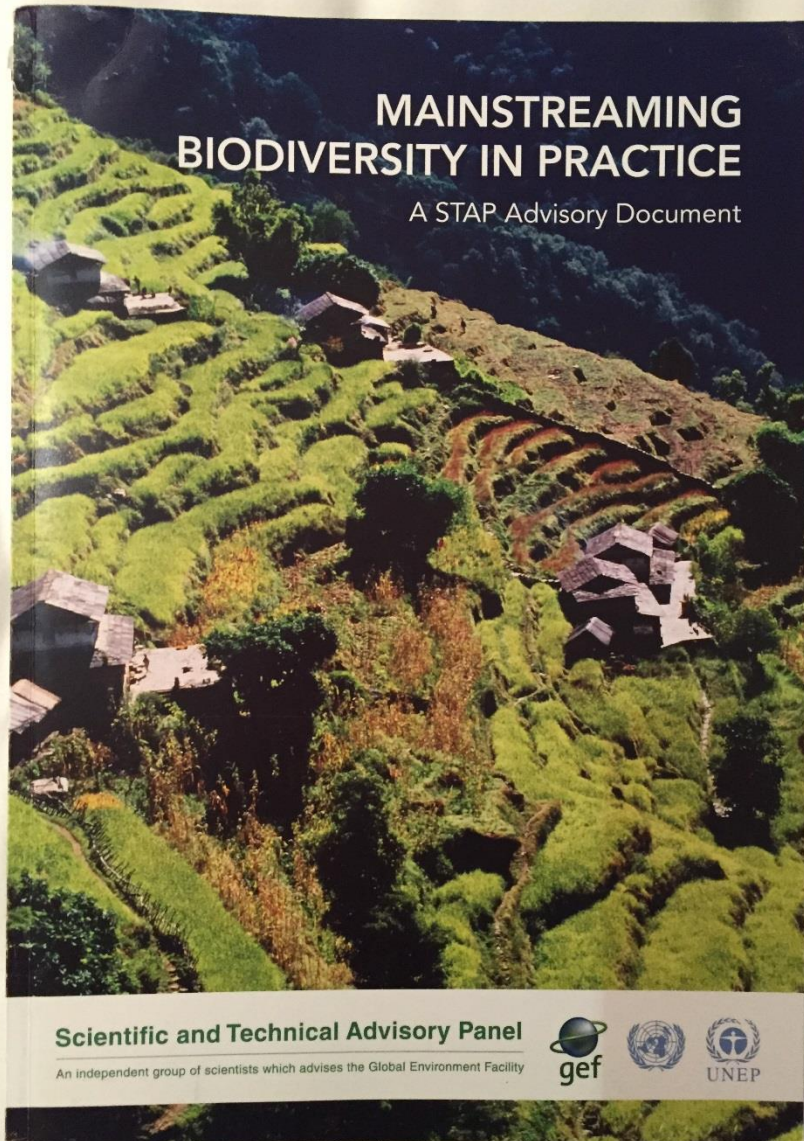
Mainstreaming Biodiversity in Production Landscapes

Caroline Petersen
Brian Huntley

To internalize the goals of biodiversity conservation and the sustainable use of biological resources into economic sectors and development models, policies and programmes, and therefore into all human behaviour.

Mainstreaming in Practice: 2014

Biodiversity mainstreaming is the process of embedding conservation considerations into policies, strategies, and practices of key public and private actors that impact or rely on biodiversity, so that biodiversity is conserved and sustainably used both locally and globally.



Mainstreaming (in conservation/development):

A key concept
known only to us (and a
handful of our friends)

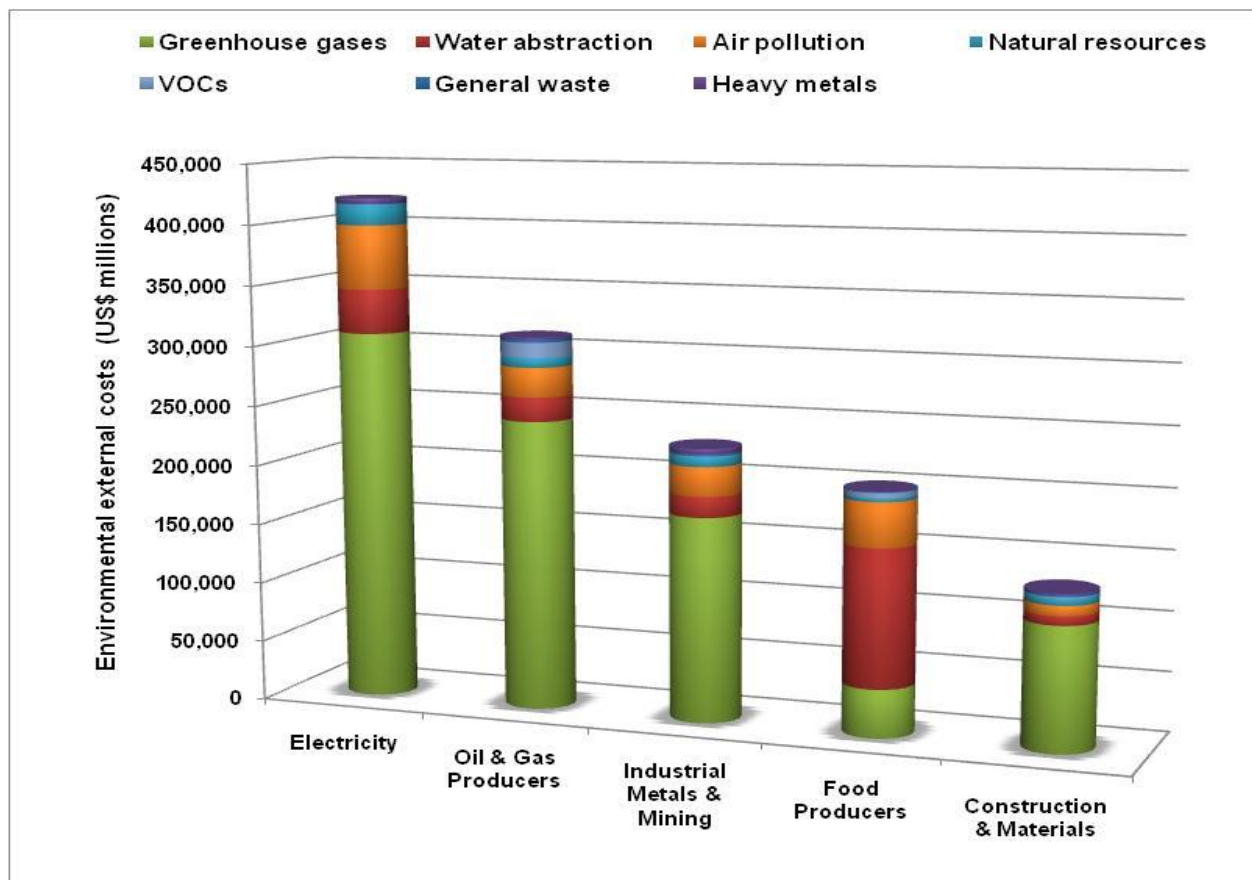


Many believe intuitively that **mainstreaming has worked**

- But we are not well positioned to quantify our impacts . . .
- . . . or assessing effectiveness of specific mainstreaming approaches



Negative externalities of top 3,000 companies estimated at US\$2.15 trillion per annum.....



GLOBAL ENVIRONMENT FACILITY
INVESTING IN OUR PLANET

Moderators of project/program which consistently contribute to success

- Pre-requisite factors that are not part of the design and that are largely unaffected by the investment, but influence the magnitude and quality of the outcome:
 - Democratic, transparent and stable governance systems
 - Strong and detailed science-based biophysical and socio-economic data and knowledge at appropriate scales **(to inform trade-off discussions as there are trade offs)**
 - Strong capacity at individual and institutional levels



GLOBAL ENVIRONMENT FACILITY
INVESTING IN OUR PLANET

Features of the project/program that facilitate success

- Design elements, which can be changed by project/program designers or implementers, that make the project more successful; (basically variants of the project dimensions)
 - Project design and operational strategy embedded within a theory of change for biodiversity mainstreaming that clearly links interventions to desired outcomes within overarching hypotheses which allows for adaptive management and developing evidence on what works and what doesn't
 - Effective monitoring and evaluation systems: notoriously weak for most mainstreaming interventions



GLOBAL ENVIRONMENT FACILITY
INVESTING IN OUR PLANET

Features of the project/program that facilitate success

- Flexible project duration (persistence and longevity) because mainstreaming is a complex, at times costly process requiring long-term investment strategies and implementation plans



GLOBAL ENVIRONMENT FACILITY
INVESTING IN OUR PLANET

Making the “case” to actors outside the biodiversity sector; e.g. South Africa

Biodiversity messaging must first answer a **rational need**,
then satisfy an **emotional need**.

The champions of biodiversity need to demonstrate
practical applications that warrant the allocation of scarce
government resources.

National
Asset

Children’s
Legacy

Practical
Solutions



GLOBAL ENVIRONMENT FACILITY
INVESTING IN OUR PLANET

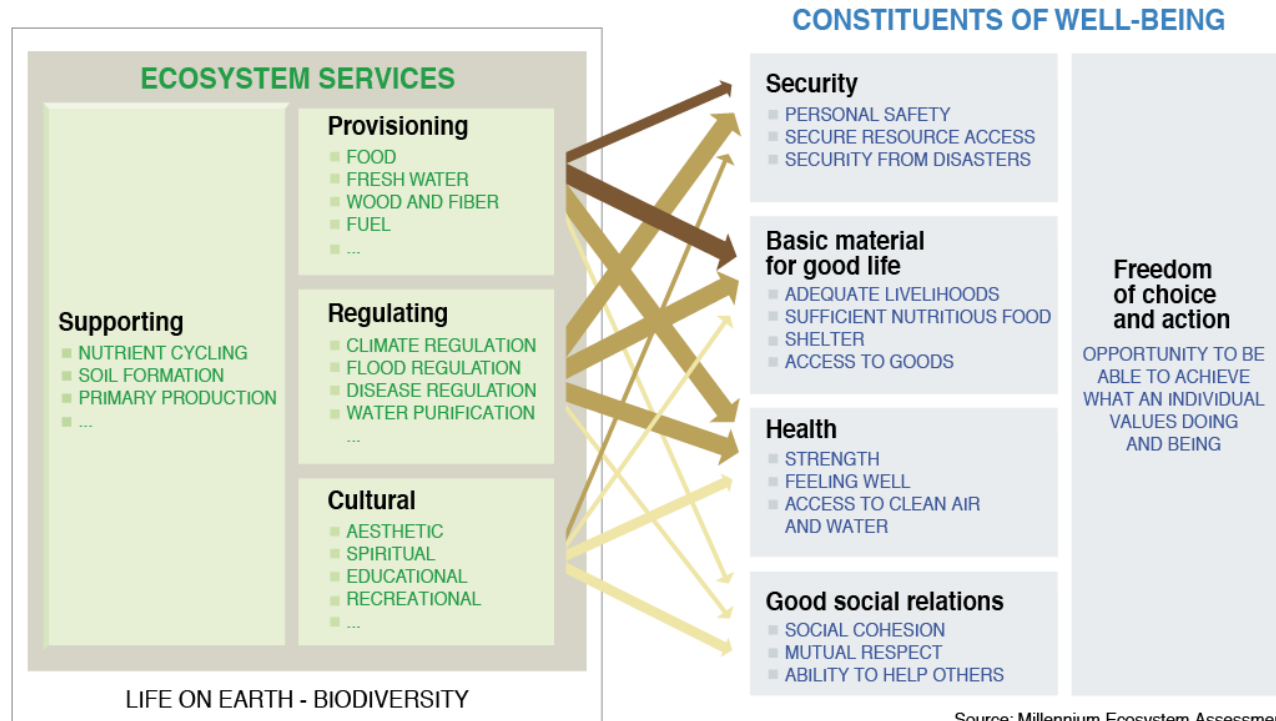
Amidst uncertainty going forward in GEF 6: Exploiting Opportunities for Biodiversity Mainstreaming at Scale through Integrated Responses

- Integrated approach programs (IAPs) in GEF-6: *(i) Sustainable Cities; (ii) Taking Deforestation out of Commodity Supply Chains; (iii) Fostering Sustainability and Resilience for Food Security in Sub-Saharan Africa*
- An increasing portfolio of multi-focal area projects and programs: ***Amazon Sustainable Landscapes Program***



GLOBAL ENVIRONMENT FACILITY
INVESTING IN OUR PLANET

Program 10 in GEF-6 Biodiversity Strategy: Integration of BD and ES into Development and Finance Planning



Source: Millennium Ecosystem Assessment

ARROW'S COLOR
Potential for mediation by socioeconomic factors

- Low
- Medium
- High

ARROW'S WIDTH
Intensity of linkages between ecosystem services and human well-being

- Weak
- Medium
- Strong



GLOBAL ENVIRONMENT FACILITY
INVESTING IN OUR PLANET

Thank you for your attention.

