

# Capacity-building workshop for Southeast Asia on ecosystem conservation and restoration to support achievement of the Aichi Biodiversity Targets

Rabbie Inzing LALO

Planning Analyst

[rlalo@pngfa.gov.pg](mailto:rlalo@pngfa.gov.pg)



**Papua New Guinea Forest Authority**

Forest Policy & Planning Directorate

PNG update on the forestry projects' perspective

28 April to 2 May 2014

Jambi, Indonesia

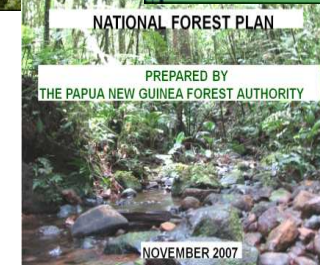
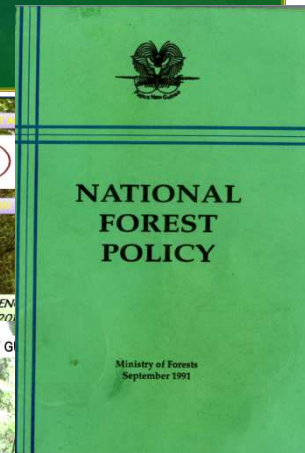
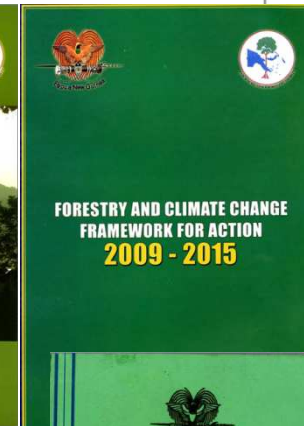
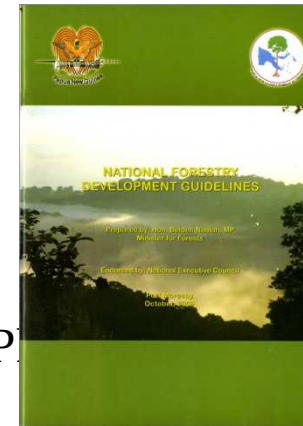
*Funded by:*



Convention on  
Biological Diversity

# 1- National policies, strategies and commitments...

- National Forest Policy 1991
- Forestry Act (*as amended*) 1991
- Papua New Guinea Vision 2050
- Papua New Guinea Development Strategic Plan 2010-2030
- PNG Medium Term Development Plan 2011-2015, 2010
- National Forestry Development Guidelines. Papua New Guinea Forest Authority 2009
- Forestry and Climate Change Framework for Action 2009-2015. Papua New Guinea Forest Authority
- The Vision 2050: Challenges for the Forestry Sector 2012-2015, 2011
- Environment Act 2000
- PNG Logging Code of Practice 1996

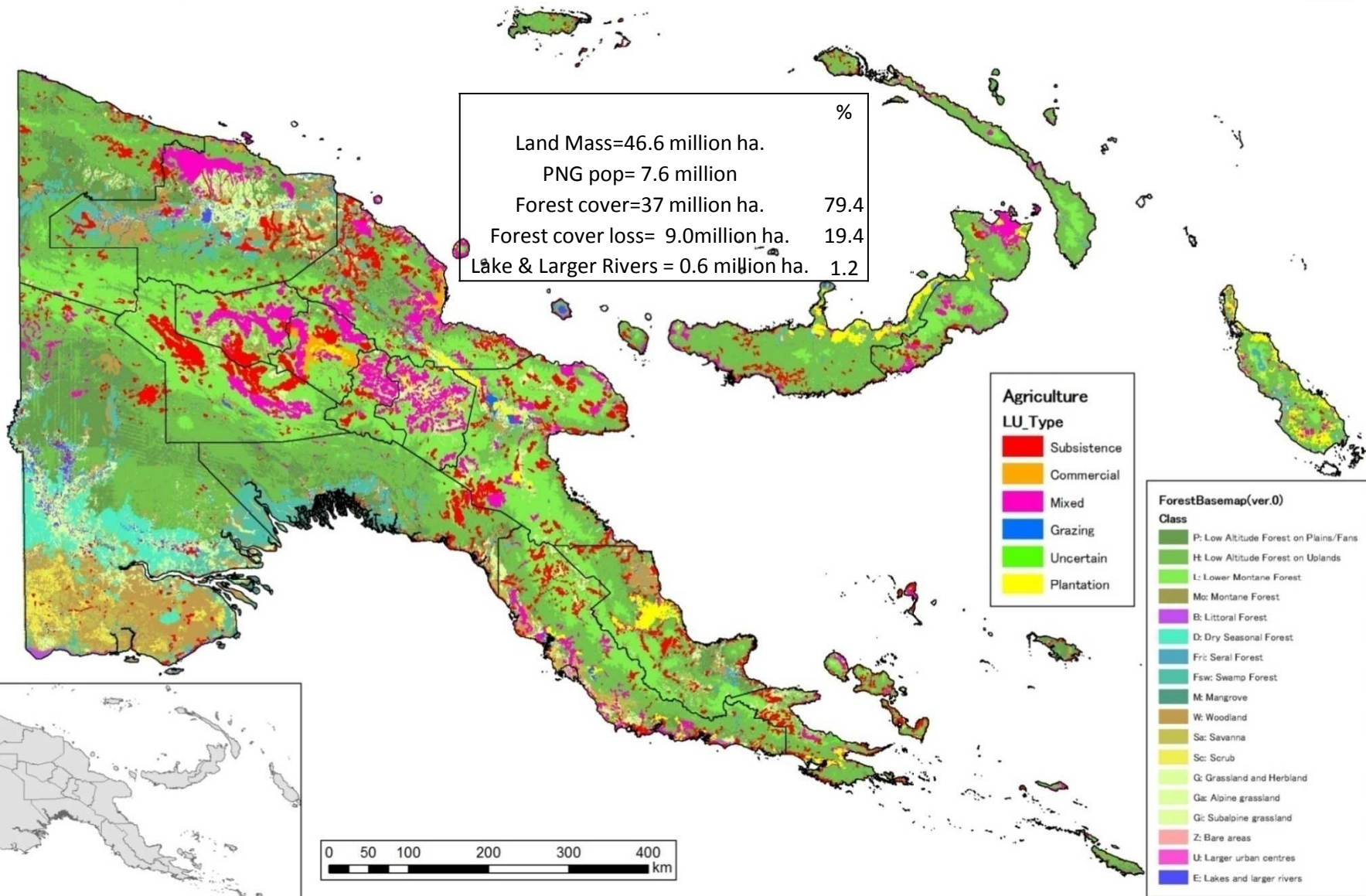


## **2- Geographically explicit information, on land-use, its status and potential areas for conservation or restoration...**

- Recent development forest basemap (JICA/PNGFA project 2011-2014)
- Demarcation of Agriculture land uses and plantations overlaid on Forest Base map (JICA/PNGFA project 2011-2014)
- Existing Forest Information Mapping System (FIMS)- planning purposes
- Existing Agriculture land use maps – Dept. Of Agriculture & Livestock (DAL)
- Existing Protected areas – Dept. Of Environment & Conservation (DEC)
- Existing Topographic maps – PNG Mapping Bureau
- Acknowledge NGOs' projects – TNC, WWF, LEAF, MARSH, etc.. do mapped out their projects' boundaries



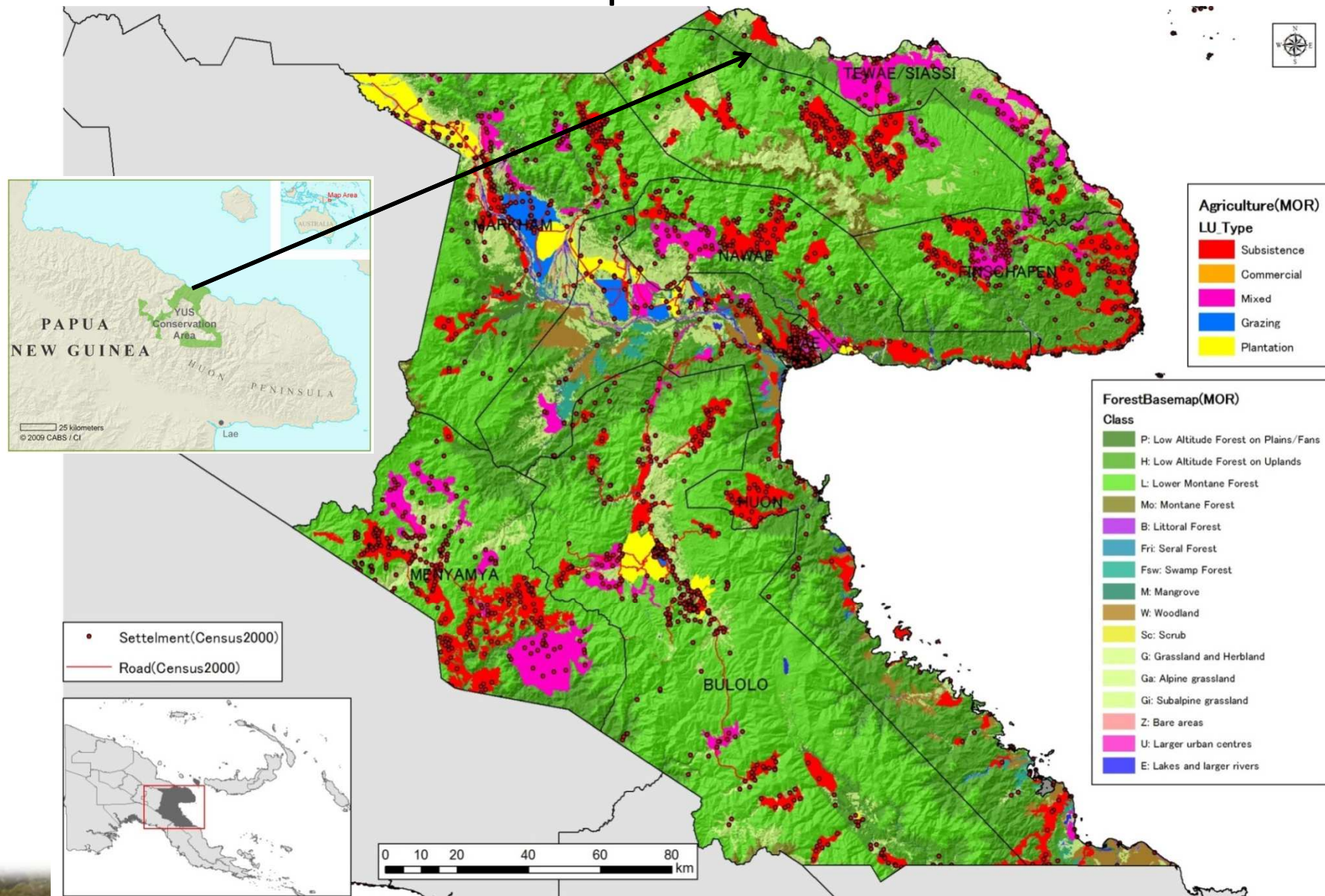
# Forest Basemap (ver0) with Agriculture: National Level 2012







# Forest Basemap ver0: Morobe Province

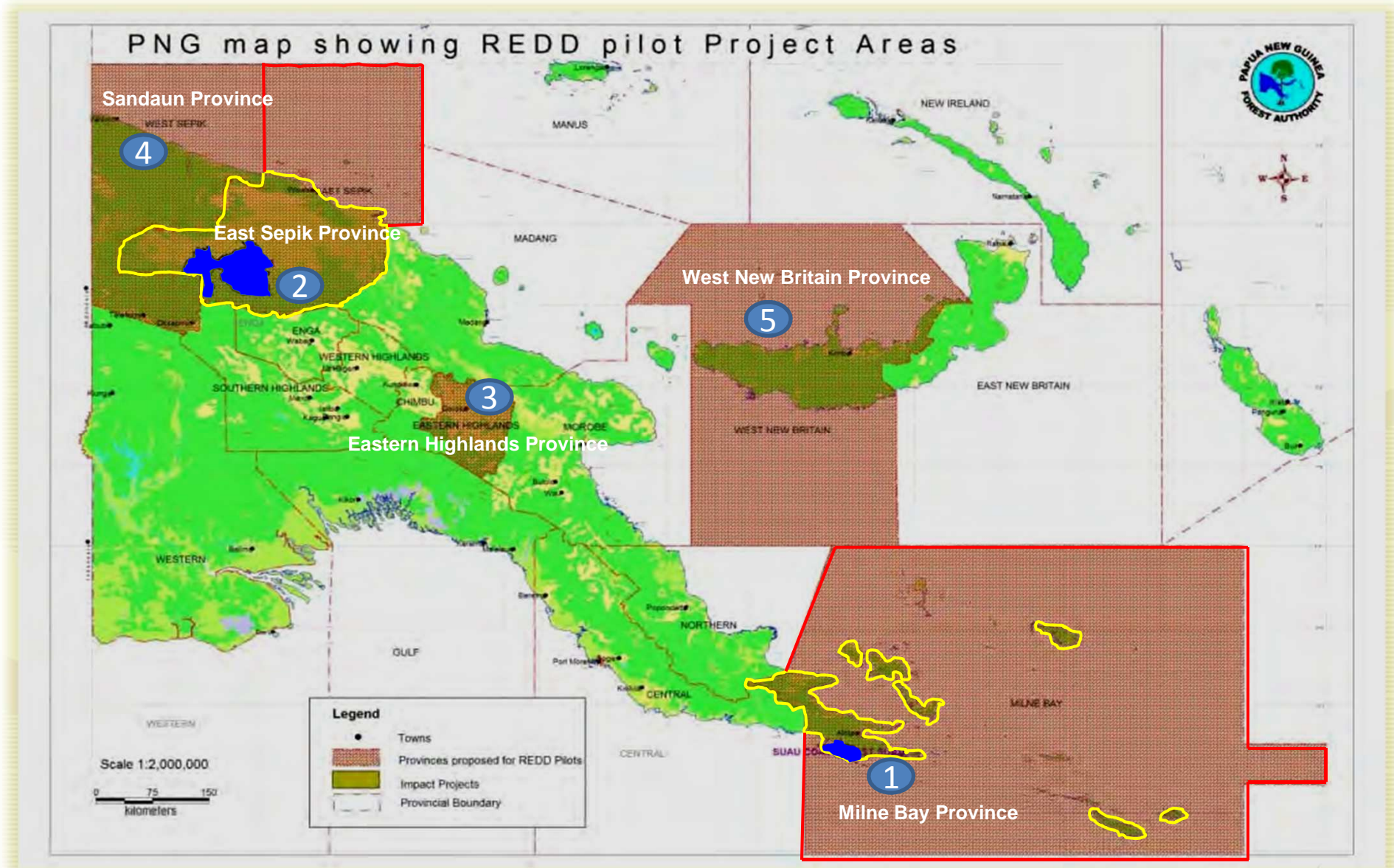


### **3- Case studies, and related lessons learned, of major on-going ecosystem conservation and restoration initiatives.**

- REDD+ Pilot projects
- Acknowledge NGOs' projects – TNC, WWF, LEAF, MARSH, YUS conservation project...etc



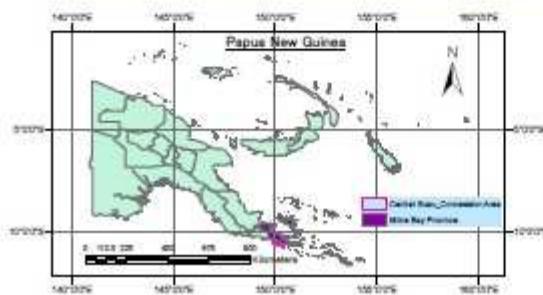
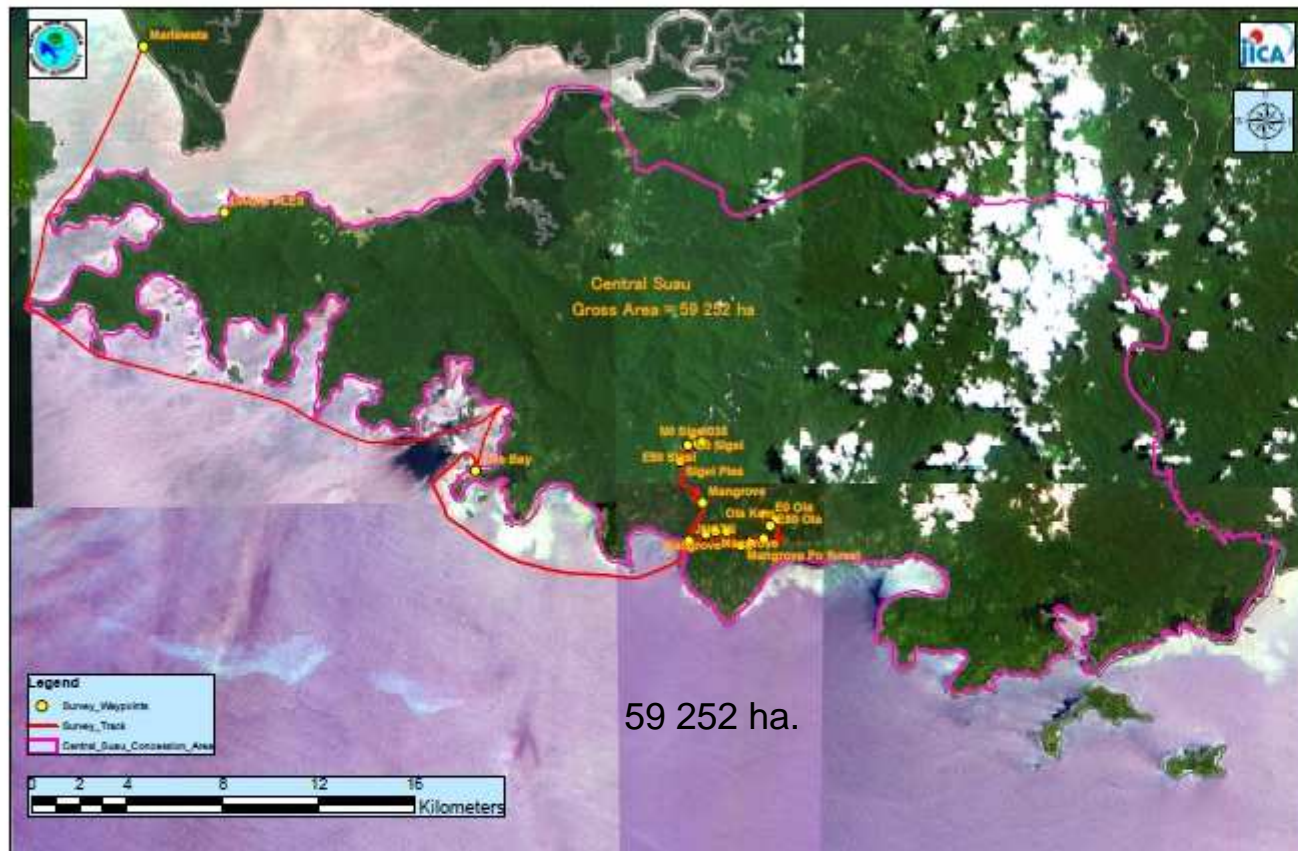
# FIVE REDD+ Pilot Provinces





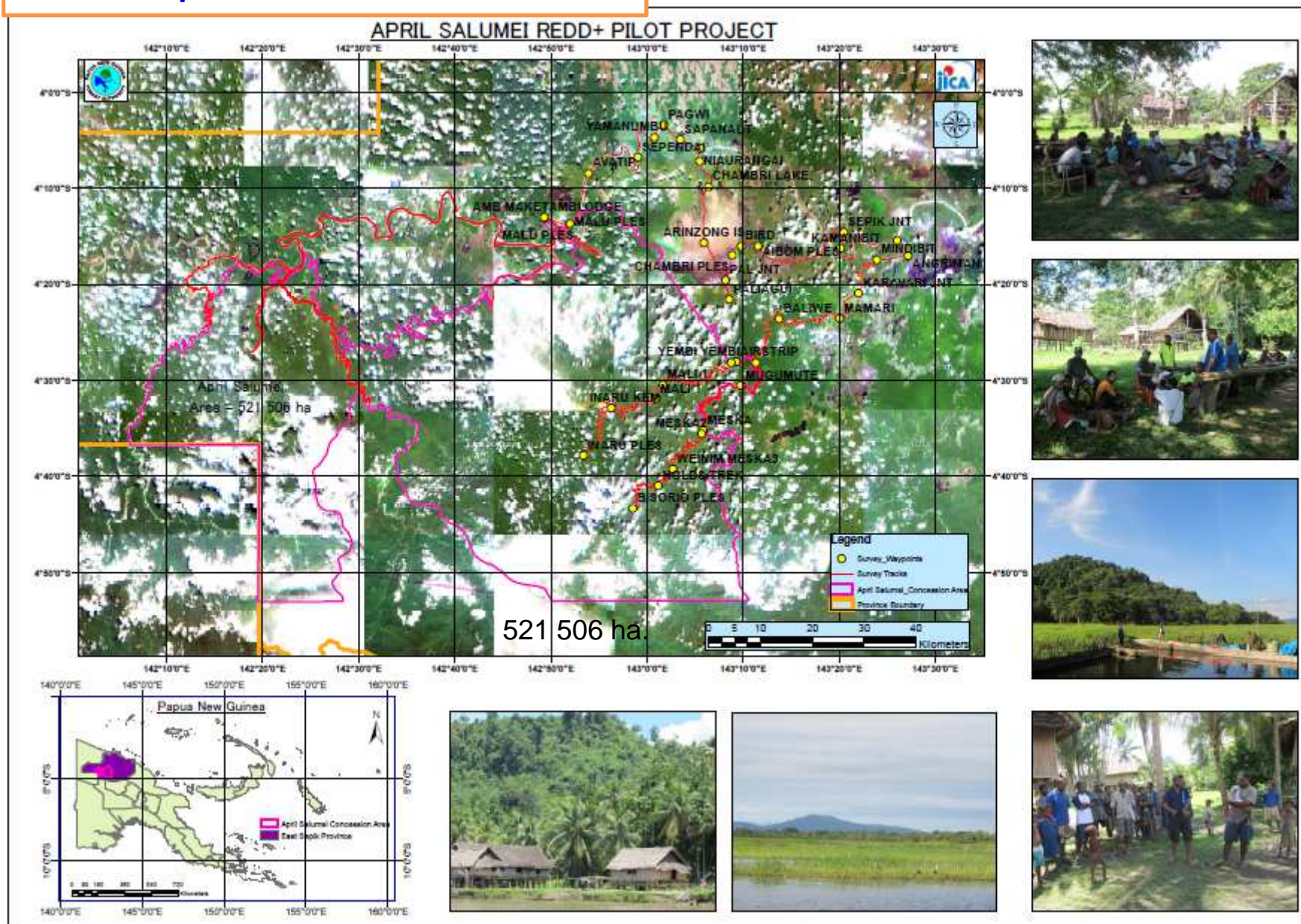
# Milne Bay Province

## CENTRAL SUAU REDD+ PILOT PROJECT





## East Sepik Province



### 3- Case studies, and related lessons learned, of major on-going ecosystem conservation and restoration initiatives...

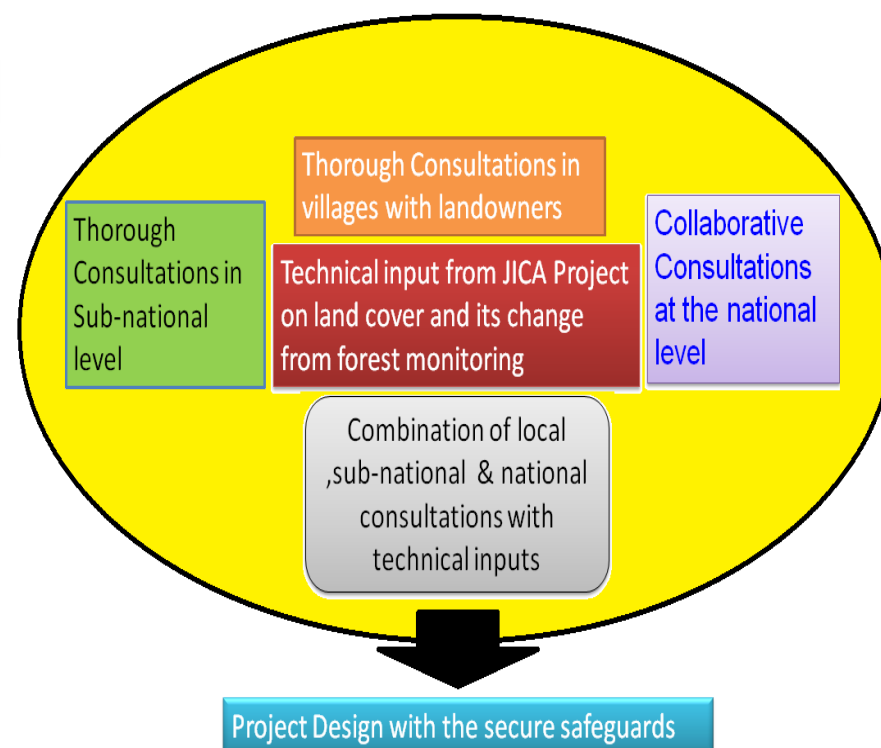


Presentation in JICA/ITTO/FFPRI Side-event COP19 Warsaw Poland Nov.2013

#### Key messages:

1. Local communities' opinions on REDD+ field experiences have to be heard at all levels (*sub-national, national & international*) for sound decision and policy making.
2. Collaborative work between all stakeholders will guarantee a transparent REDD+ mechanism for Papua New Guinea.

**Title: Efforts to convey opinions of local communities in Papua New Guinea**





#### **4- Spatial planning and policy tools, tools for stakeholder involvement, etc that are currently used in your country or could be applied...**

- GIS and RS technology have been developed through the assistance from JICA and Aus-Aid.
- Monitoring logging activities including large scale agriculture activities and small scale agriculture
- **Monitoring of REDD+ pilot projects**
- Monitoring of forest plantations and other cash crop plantations



## **5 - Does your country have the means, financial or otherwise, of achieving the Targets, and if not, what elements are missing?**

- Financial means is a major challenged face, but through Donor Funded projects like JICA, AusAid, UNREDD EU FAO, ITTO, etc...few targets are achieved indirectly
- Water management and monitoring is a major challenge faced in the country
- Fauna management and monitoring is a major challenge faced in the country
- Forest degradation monitoring is a major challenge faced in the country

## **6 - Major Challenges**

- Land and forest resources in PNG are owned by the indigenous people
- No land use plan for the country
- Finance
- No Climate Change Policy
- Capacity building
- No proper collaborative work due to projects' different objectives per institutions

**We thank our indigenous people, because indirectly they are protecting and restoring PNG's forest for the world as a whole**