

Forest Ecosystem Restoration in the Republic of Korea

Jaeyong CHOI
jaychoi@cnu.ac.kr





CONTENTS

- 
- I Large-scale Forest Restoration in Korea
 - II The Green Will
 - III After the Successful Restoration
 - IV Forest Ecosystem Restoration

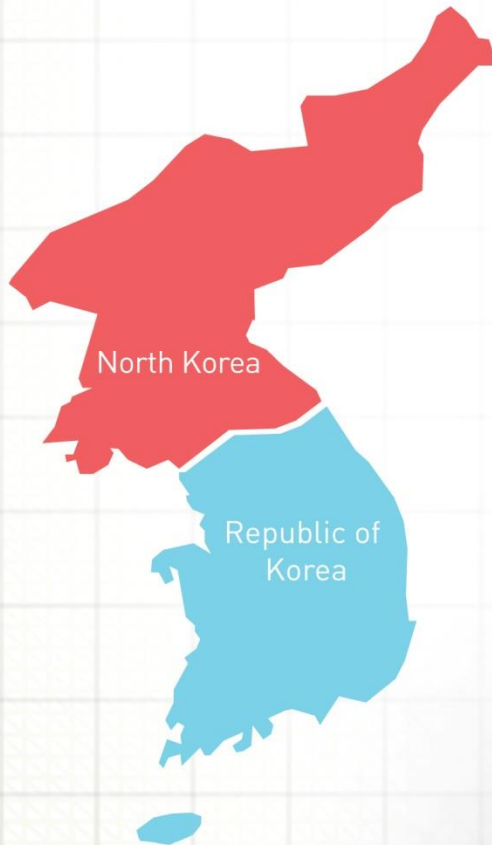
A photograph of a lush green forest. The trees are tall and thin, with a dense canopy of bright green leaves. A dirt path leads from the foreground into the distance, flanked by green undergrowth. The overall scene is vibrant and natural.

I. Large-scale Forest Restoration in Korea

I. Large-scale Forest Restoration in Korea



01 Forest Ecosystem in Korea



- Forest ecosystem as key component of biodiversity in Korea
 - Total land area : 10Mha
 - Forest area : 6.4Mha(64%)
 - Agricultural land : 2Mha(20%)
 - Developed area : 1.6Mha(16%)

I. Large-scale Forest Restoration in Korea



02 State of Forests in 1960

- Landscape level degradation of forest ecosystem in the early 20th century
 - + Over-exploitation during the Japanese occupation(1910–1945)
 - + Korean War(1950–1953)
 - + Use of fuelwood
- Stock volume per ha in 1960 : **only 12 m³**



Overexploitation

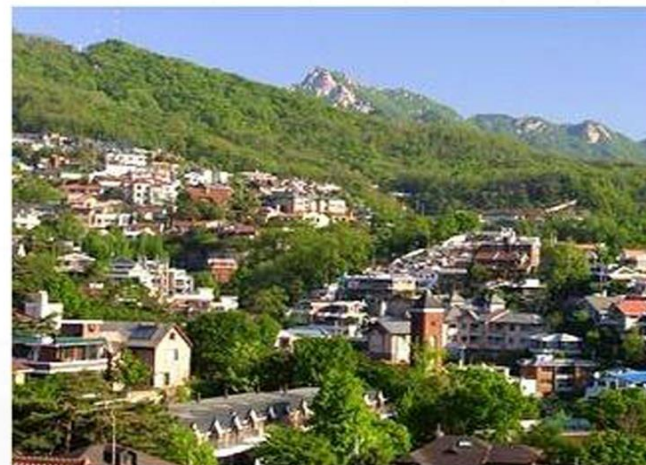


Korean War

I. Large-scale Forest Restoration in Korea



03 Large-scale Forest Restoration



1960

79 USD

26 million

12m³/ha

GNI per capita
Population
Forest stock volume

2010

28,650 USD

48 million

126m³/ha

I. Large-scale Forest Restoration in Korea



04 Stages of Forest Restoration

Progress



I. Large-scale Forest Restoration in Korea



05 Challenges and Solutions

Lack of governance

- A broad-based approach through Saemaul Undong
- Result-focused step by step approach
- Establishment of the Korea Forest Service in 1967



Lack of scientific knowledge and technology on forest restoration

- Research and development of appropriate technology
- Timely delivery of materials and technical services
- Provision of adequate technical assistance and extension of appropriate technology to users



I. Large-scale Forest Restoration in Korea



05 Challenges and Solutions

Lack of financial and human resources

- Emphasis on short term gains in income and welfare
- Appropriate and timely financial subsidies and access to resources
- Reinvestment of a portion of the gains



Lack of policies and awareness

- Strong, clear laws and regulations developed with participation of villagers
- Top-down and bottom-up planning with emphasis on cooperation between government and private citizens
- Long tradition of village cooperation



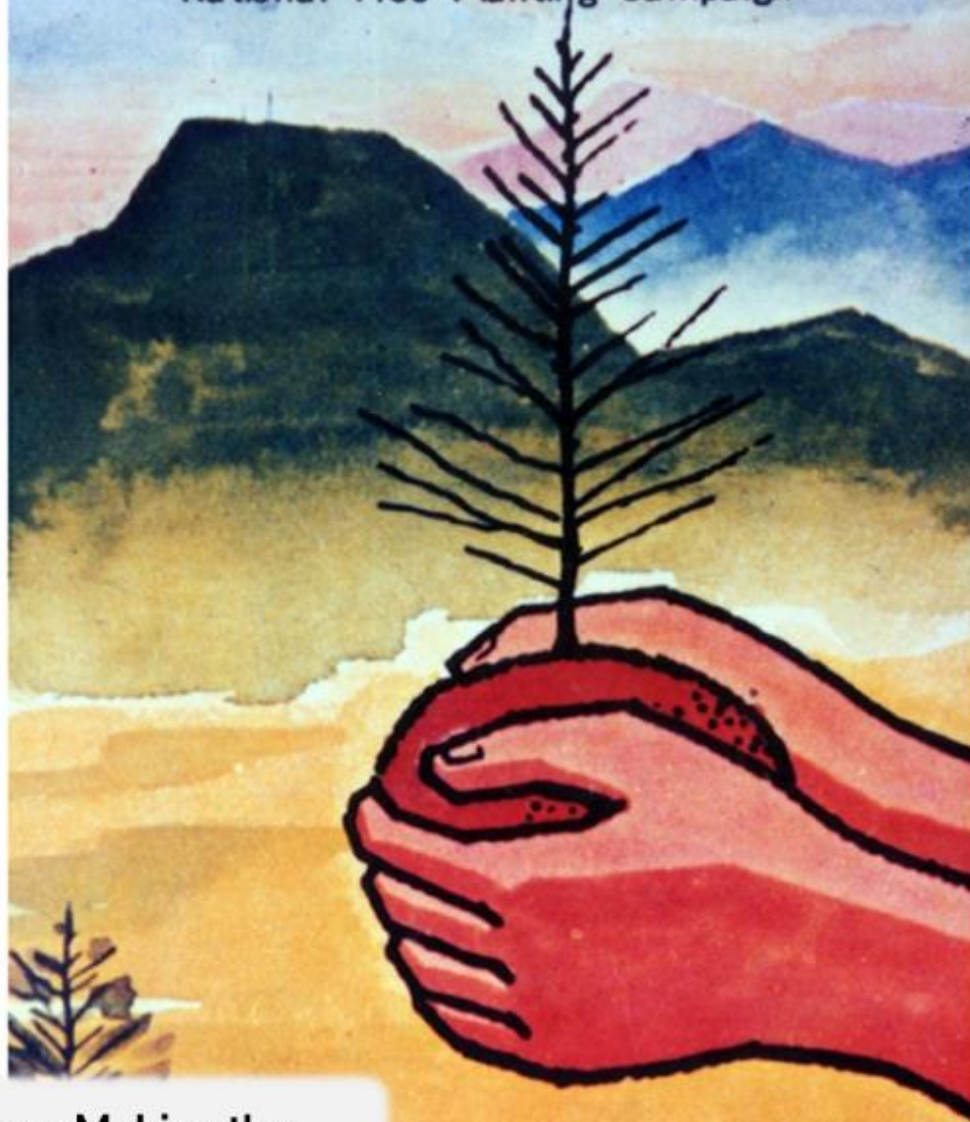
새마을산림



Restoration Model established under the *Saemaul Undong*

국민식수기간 특별우표

Special Postage Stamps Marking the
National Tree Planting Campaign



Special Postage Stamps Making the
National Tree Planting Campaign

1975. 3. 20

“If you love your country, plant trees”

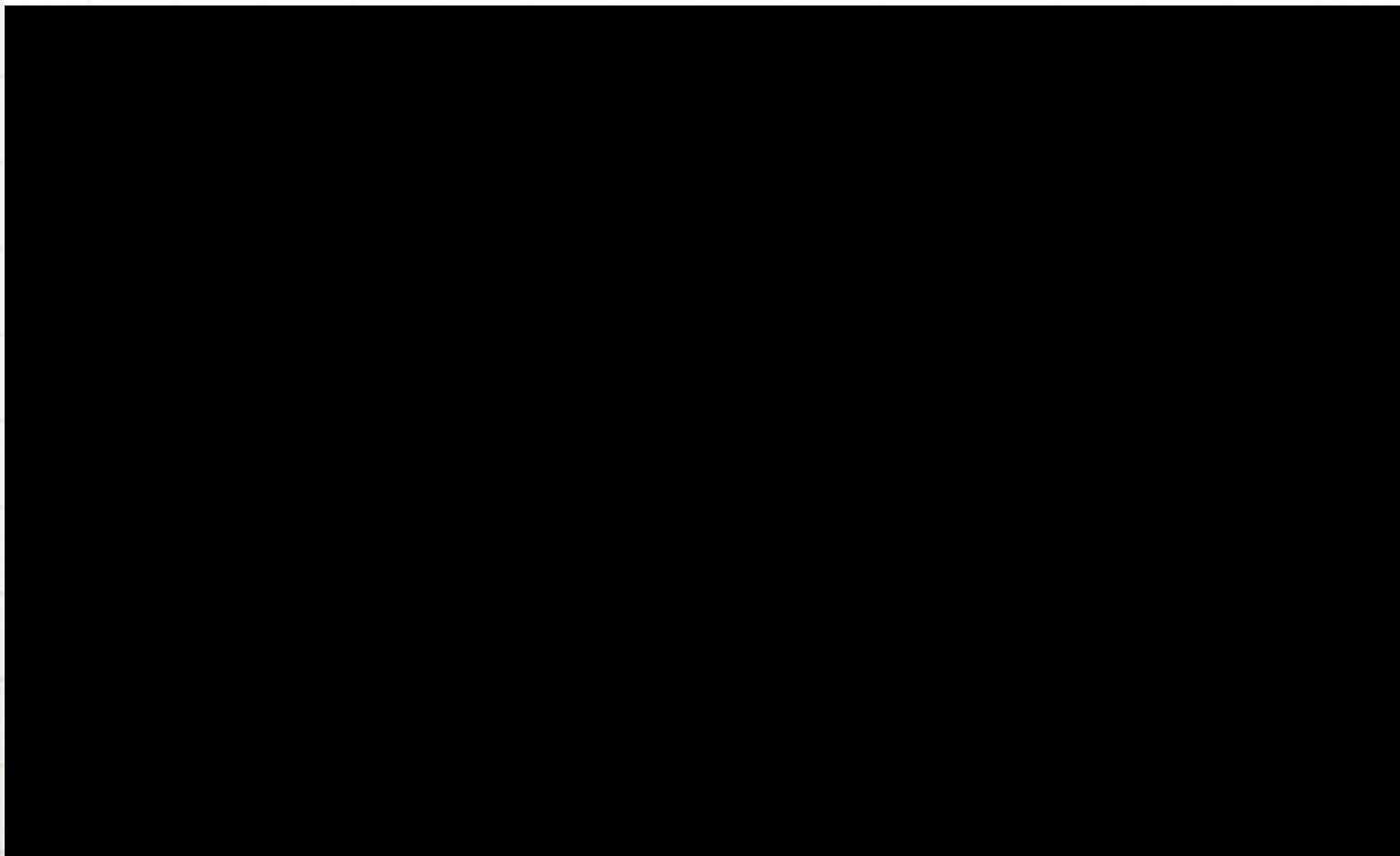
A photograph of a dense forest with tall, thin trees and a path leading into the distance. The trees are mostly deciduous with vibrant green leaves. The path is a dirt road that curves slightly to the right in the distance. The lighting is bright, suggesting a sunny day, with sunlight filtering through the canopy. A semi-transparent dark green rectangular box is overlaid on the right side of the image, containing the text.

II. The Green Will

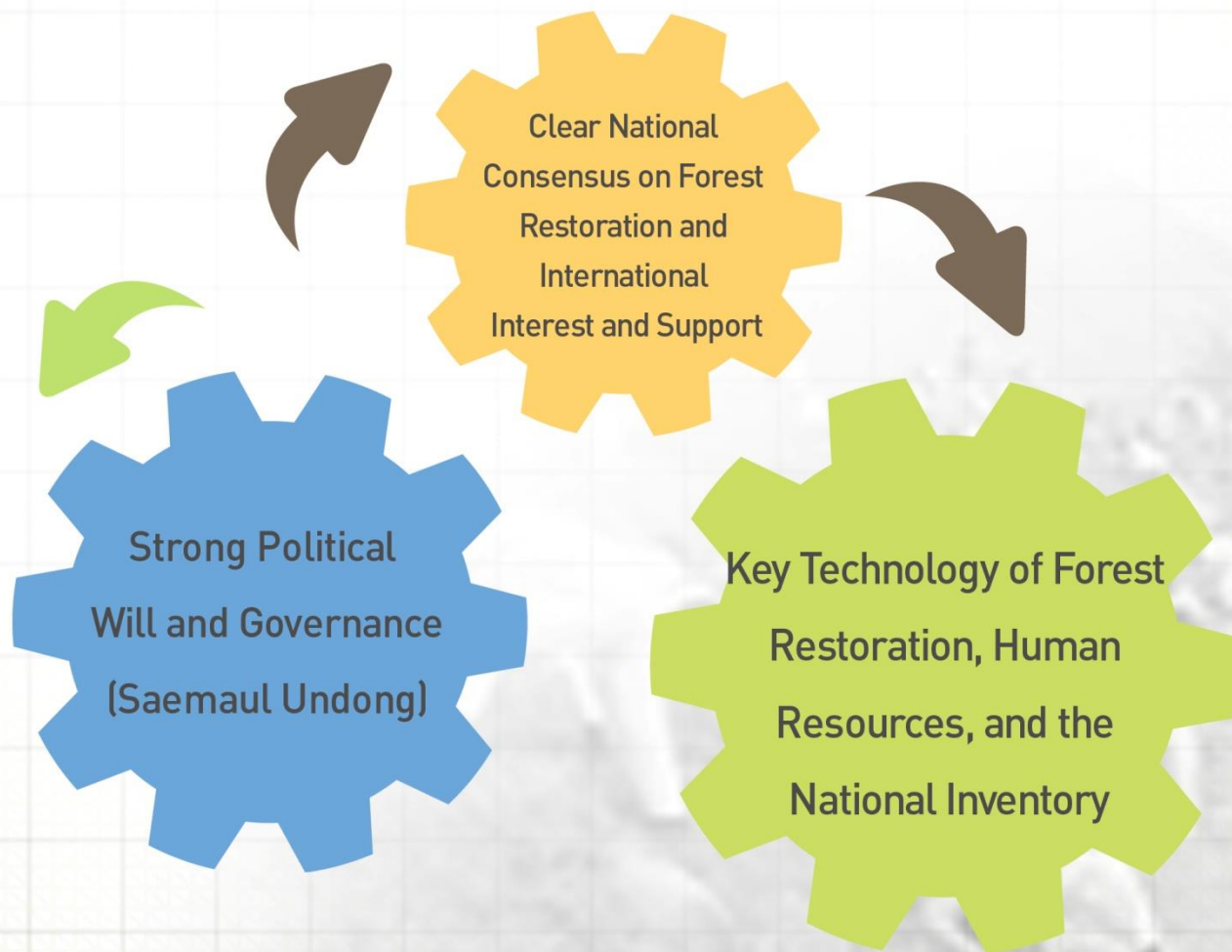
Ⅱ. The Green Will



01 Young-il Forest erosion control project



02 Factors of Successful Forest Restoration



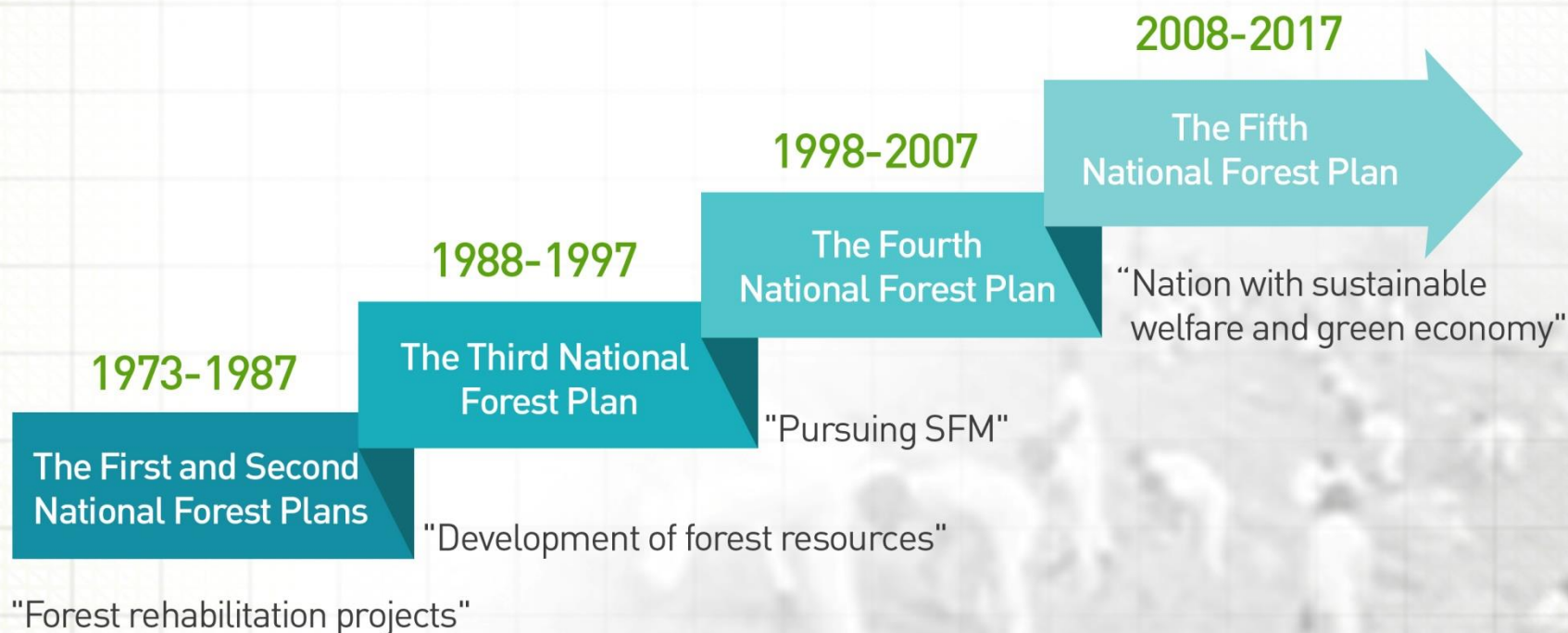
A photograph of a dense forest with tall, thin trees and a dirt path leading into the distance. The trees are mostly deciduous with vibrant green leaves, suggesting a summer or early autumn setting. The path is narrow and appears to be made of dirt or gravel, winding through the forest. The lighting is soft, with sunlight filtering through the canopy, creating a dappled effect on the ground and foliage. The overall atmosphere is peaceful and natural.

III. After the Successful Restoration

III. After the Successful Restoration



01 Transition in Forest Policies



III. After the Successful Restoration

02 Current State of Forests in Korea

Development of resources for carbon sink
Conservation of biodiversity



Raw materials for emerging industries including
new pharmaceutical and bioenergy development



Forest for public health
(e.g. forest therapy and recreational forest)

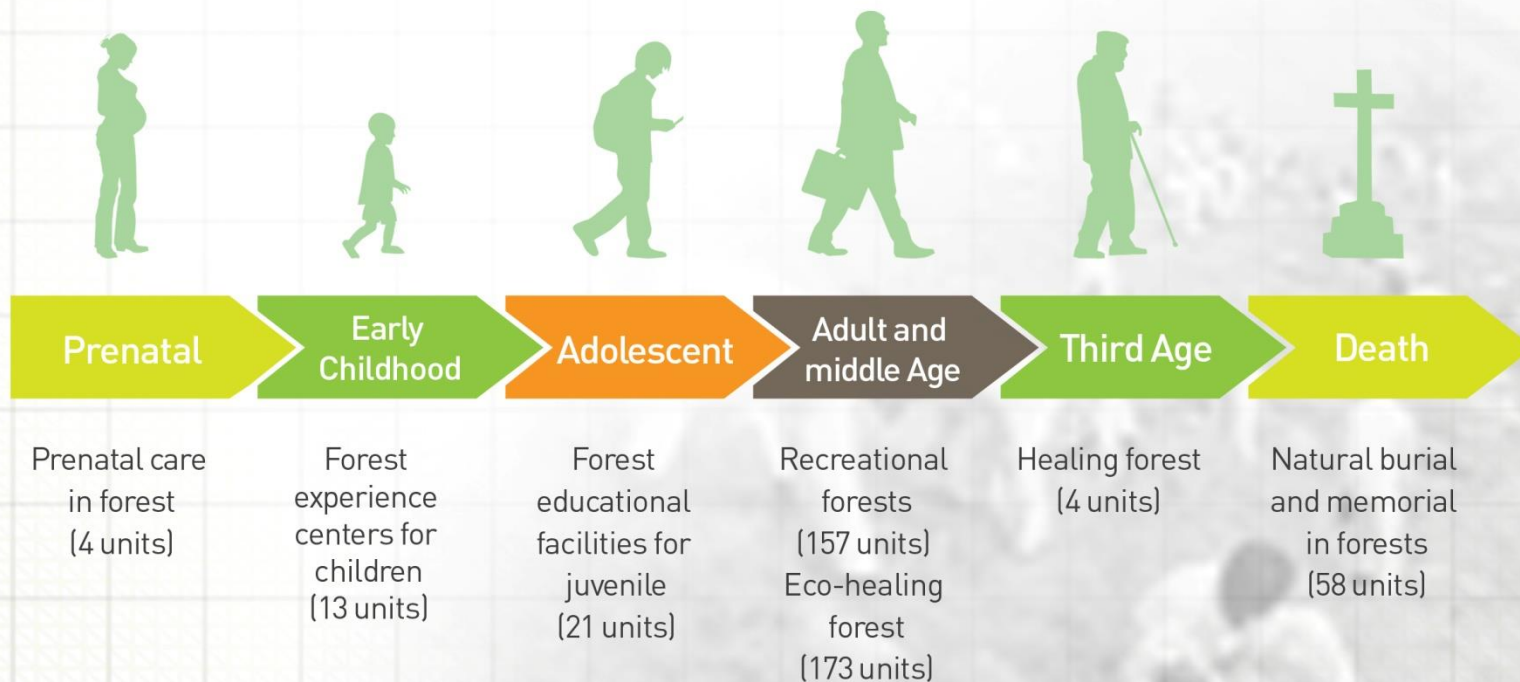


III. After the Successful Restoration



03 Current State of Forests in Korea

New paradigm of forest use
“from cradle to grave, life with forests”

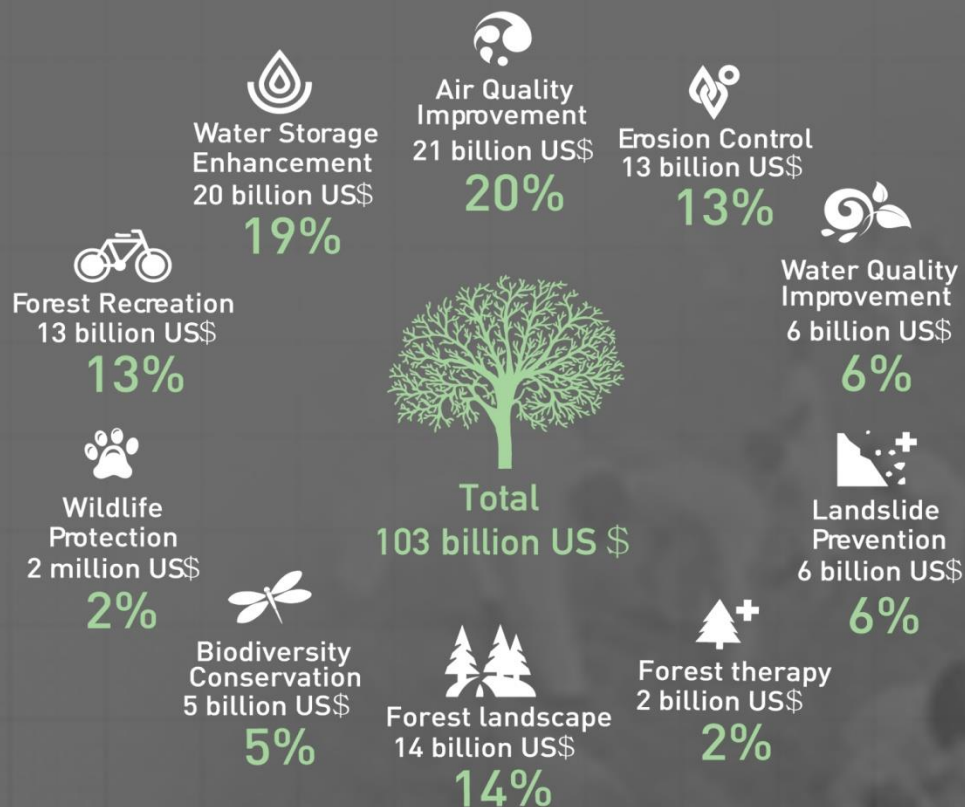


III. After the Successful Restoration



03 Current State of Forests in Korea

Public benefits from the forest





Forests Interpreter

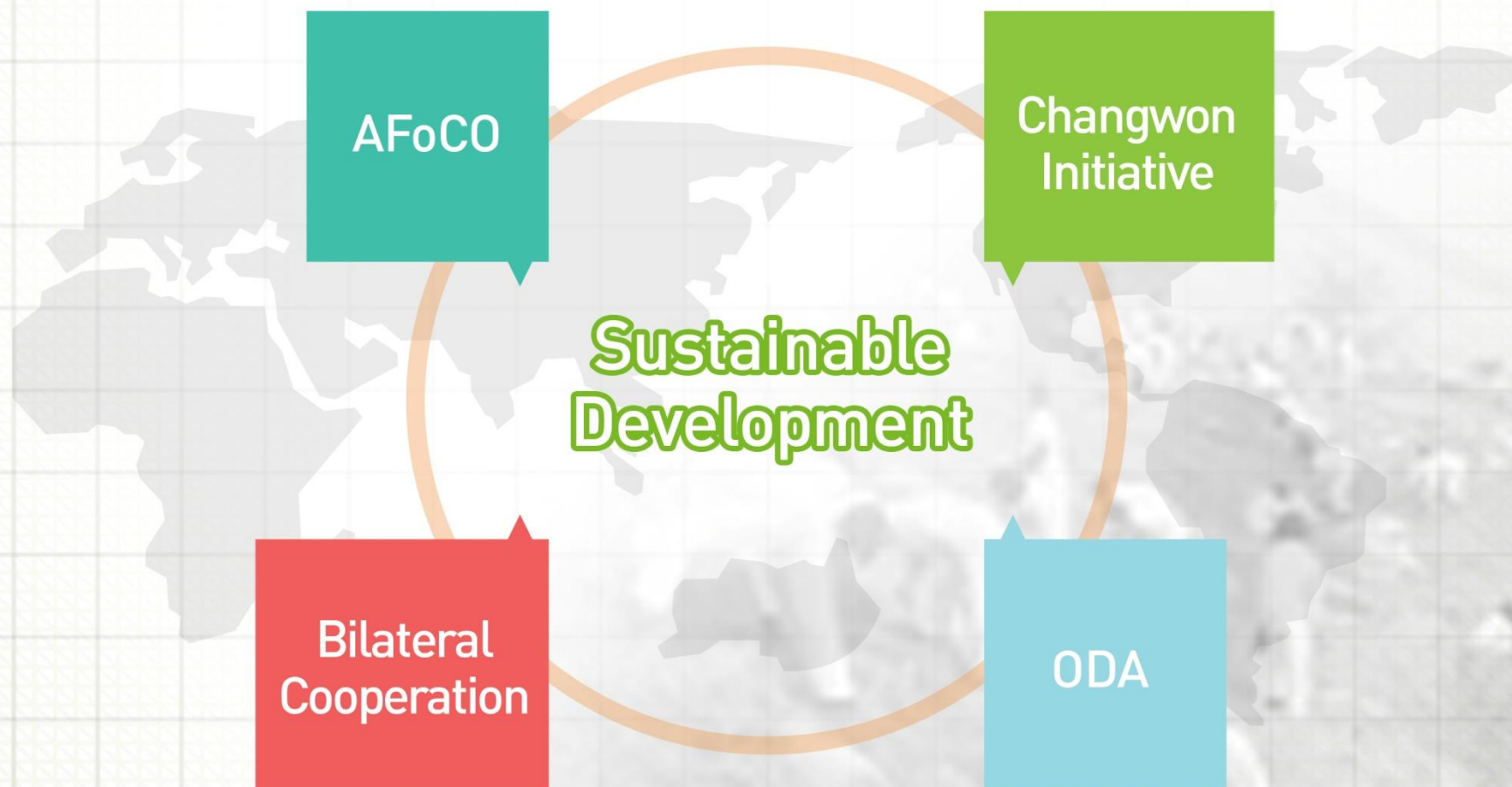


Korea Wood Industry Fair



III. After the Successful Restoration

04 International Cooperation



A photograph of a dense forest with tall, thin trees and a dirt path leading into the distance. The trees are mostly deciduous with vibrant green leaves. The path is a light brown color and runs straight through the center of the forest. The lighting is bright, suggesting a sunny day, with sunlight filtering through the canopy. A semi-transparent dark green rectangular box is overlaid on the right side of the image, containing the text.

IV. Forest Ecosystem Restoration

IV. Forest Ecosystem Restoration



01 International Trend

In 2003, the Global Partnership on Forest and Landscape Restoration (GPFLR) was established, led by IUCN, WWF and UK

In September 2011, the Bonn Challenge called for restoration of 150Mha by 2020

The Hyderabad Call for action on biodiversity was made at the CBD COP 11

IV. Forest Ecosystem Restoration



02 Forest Ecosystem Restoration Initiative

Aichi Targets

Pyoungchang
Road Map

Korea Biodiversity Initiatives

MOF

Marine
Protected Area

ME

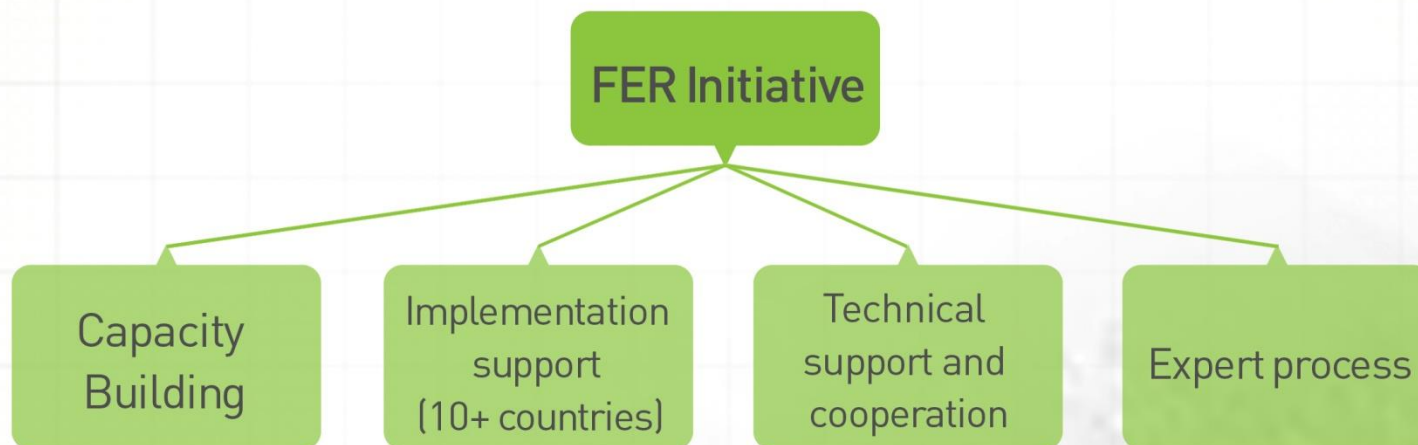
Science & Tech.
Cooperation

KFS

Forest Ecosystem
Restoration

IV. Forest Ecosystem Restoration

02 Forest Ecosystem Restoration Initiative





Thank you !

감사합니다 !