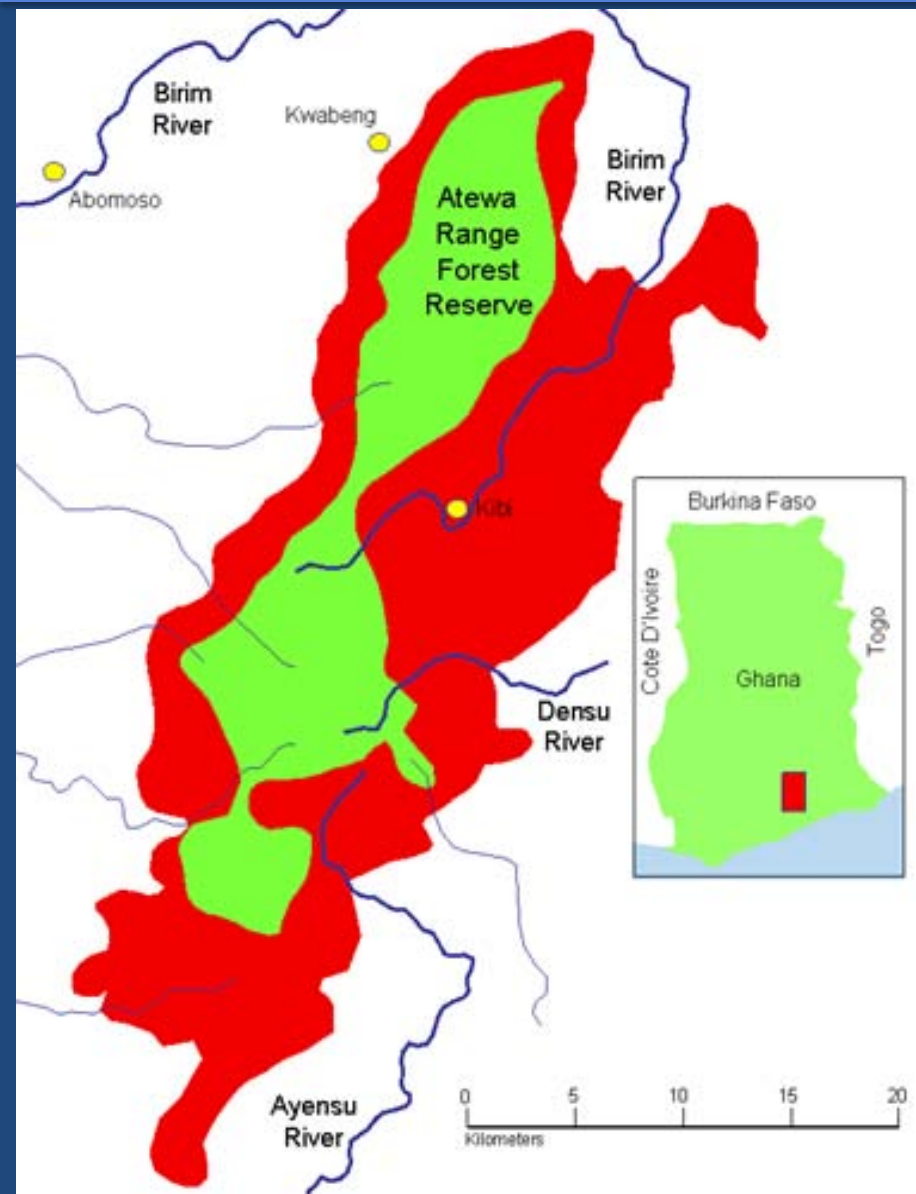


# SAVE ATEWA FOREST PROGRAMME

Emmanuel Akom  
October 8, 2015

# Atewa Critical Conservation Action Programme



- Measuring 236.63km<sup>2</sup>
- Created in 1926 as a National forest
- Special Biological Protection Area, Hill Sanctuary, Globally Significantly Biodiversity Area (GSBA) (1999), Important Bird Area (IBA) (2001)
- 5 Political Administrative Districts (East Akim, Atiwa, West Akim, Ayensuano, Denkyembour)
- Akyem Abuakwa Traditional Area



## BIODIVERSITY



**Geoffroy's Pied Colobus**– One of Africa's most threatened primates



**Red-bellied Paradise Flycatcher**



**Atewa Dotted Border**



**Giant Africa Swallowtail**



**Campbell's Monkey**



**Fruit Bat**–Important pollinator and seed dispersal



**Blue-headed Bee-eaters**



**Blue-breasted Kingfisher**



**Atewa Slippery Frog**



**Green-orange Forester**



**Phynobatrachus Species: New to Science**



# Atewa Critical Conservation Action Programme

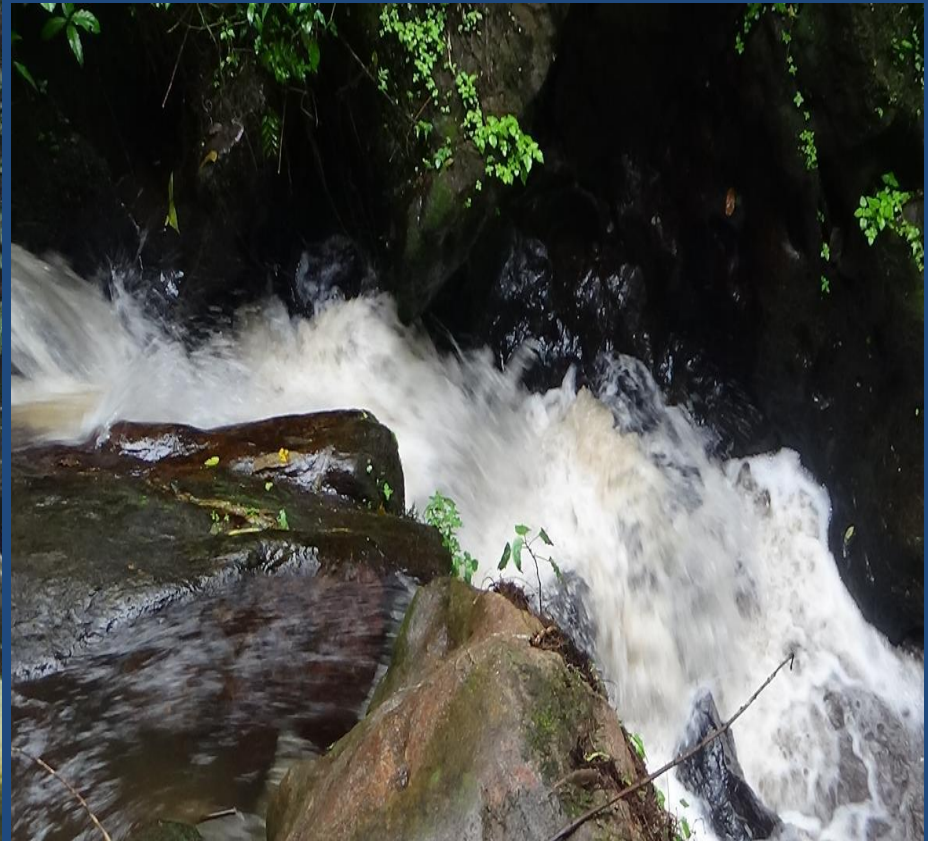
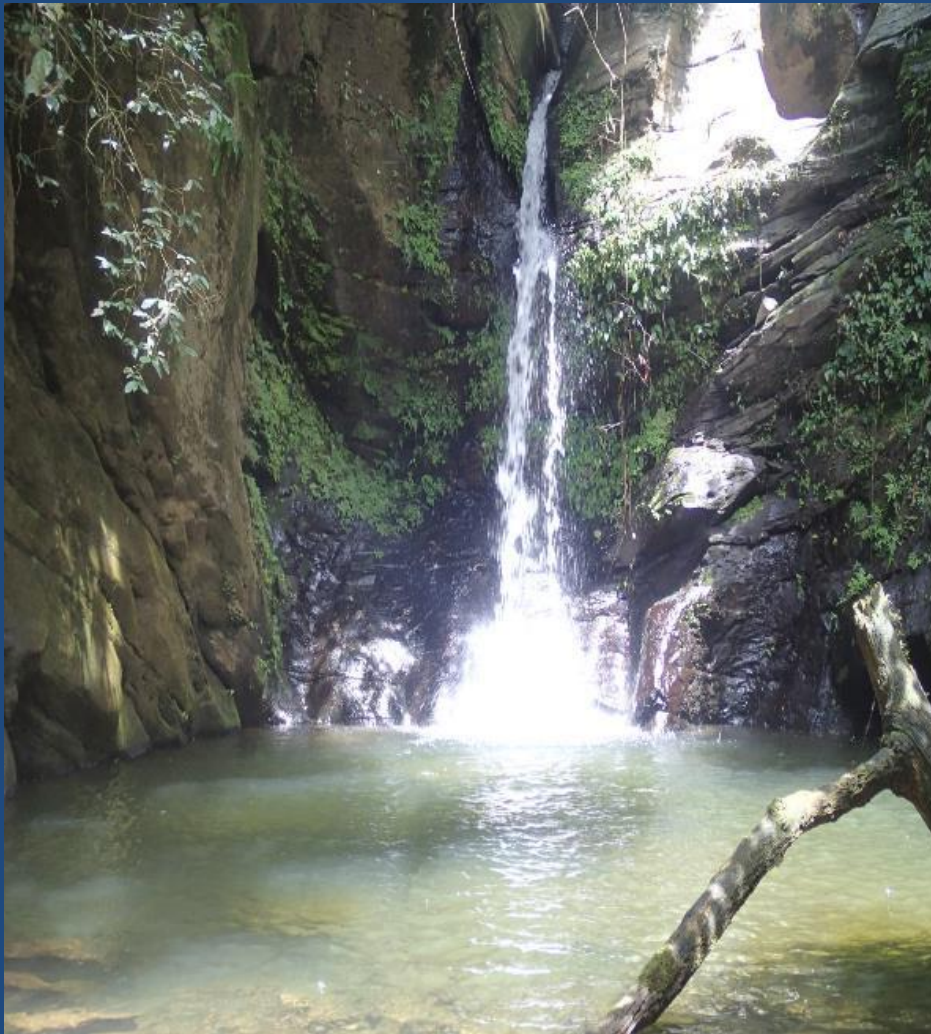


	Species recorded	Species new to science	New for Ghana	Species of conservation concern	Endemic to Upper Guinea
Plants (Vascular)	765			6 (Black Star)	
Dragonflies	72	1	8	1	
Butterflies	575				16
Grasshoppers	61	8	36		
Fishes	19		1		
Amphibians	32			9	16
Birds	155		1	6	11
Small mammals	15		2	2	3
Large mammals	22			10	
Primates	6			2	1



## NATIONAL WATER TOWER

- Head waters of 3 Important Rivers - Densu, Birim & Ayensu

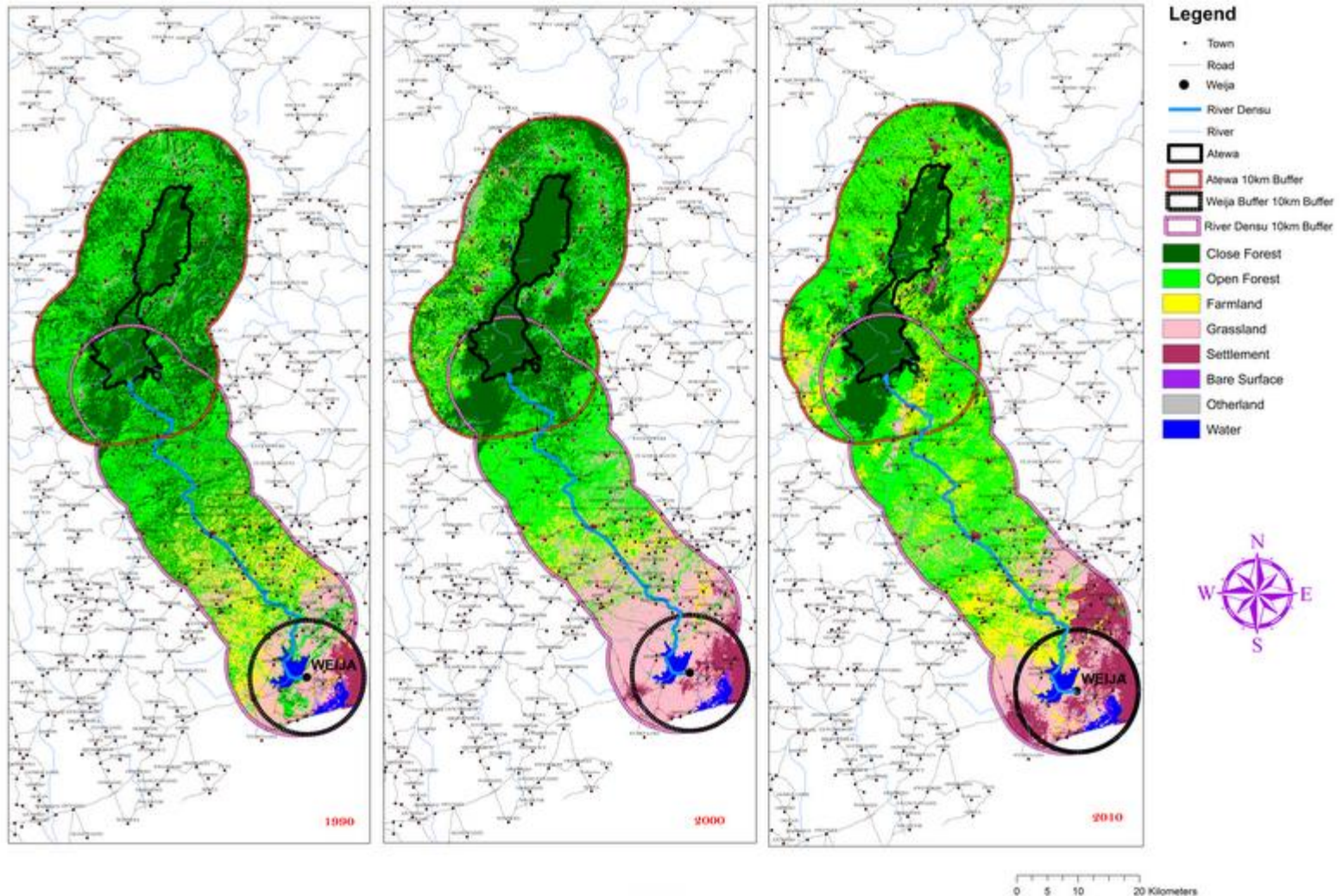




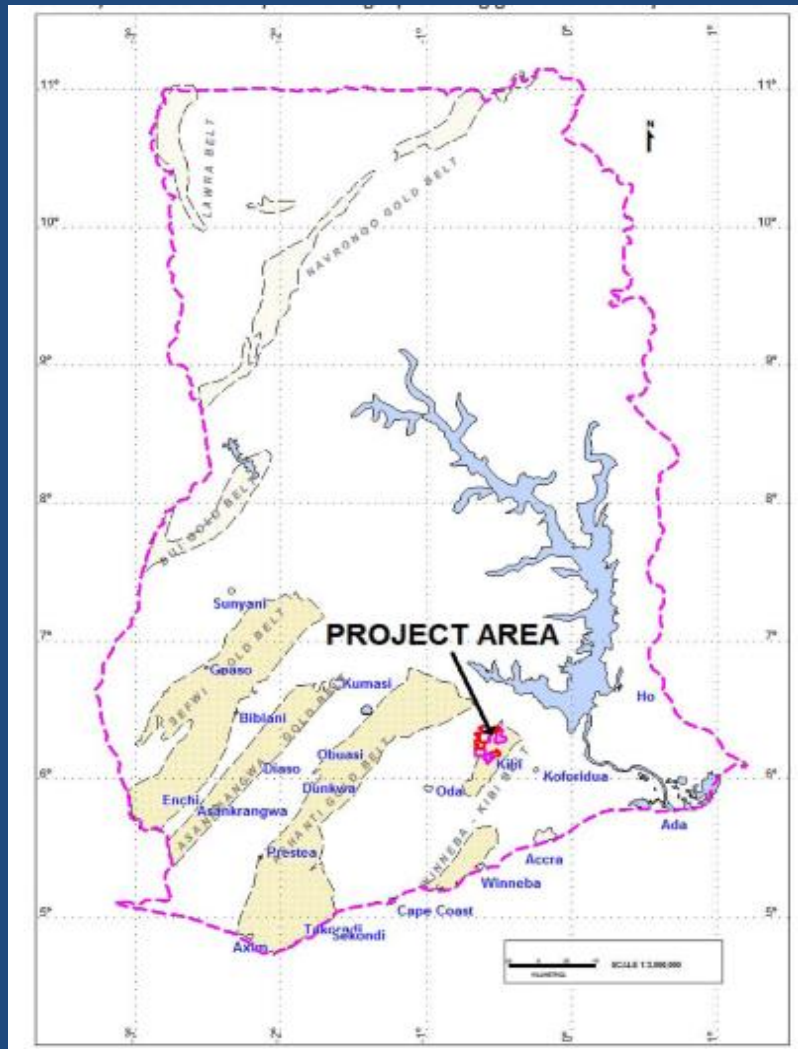
# Atewa Critical Conservation Action Programme



LAND USE/COVER MAP OF ATEWA, DENSU BASIN AND WEIJA RESERVOIR FOR 1990, 2000 & 2010



## MINERALOGY



Coarse grain nuggets recovered around the Kwabeng area



## THREATS

### Illegal hunting





## Illegal logging





## Farm Encroachment

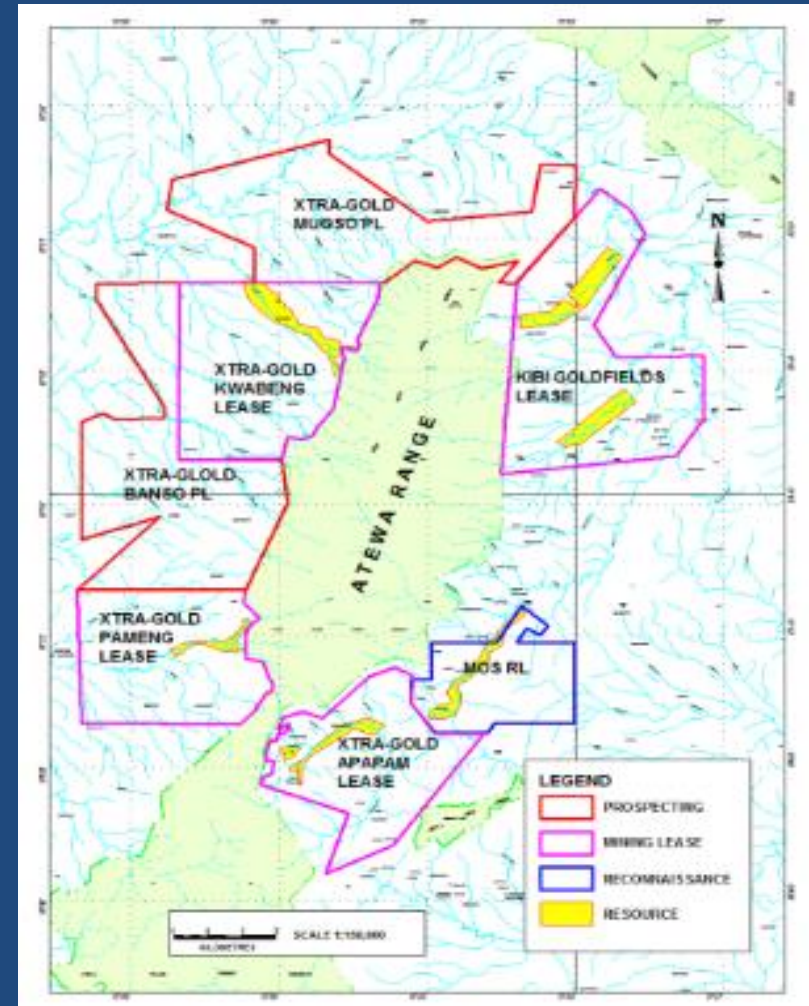




# Atewa Critical Conservation Action Programme



## Bauxite Prospecting / Small scale and illegal mining



## MAIN DRIVERS

- The lack of meaningful participation of local stakeholders in decision making and management of the Atewa Forest Reserve
- Lack of direct economic benefits from the reserve are the main drivers for local encroachment and illegal activities
- Mix of conflicting policies & weak policy implementation and compliance by various actors
- Political interests, from local to national level, in quick economic benefits deriving from logging & mining



## WHY ARE WE IN ATEWA?

A Rocha works to support and enhance important biological areas, ecosystems and species whilst seeking alternatives for communities who live near the resources whose livelihoods depend on it.

# Atewa Critical Conservation Action Programme

To conserve and  
restore forest  
landscape for biodiversity,  
carbon storage,  
and sustainable  
livelihoods of local communities  
through integrated  
ecosystem  
approach



The background of the slide is a photograph of a vast, hazy forest landscape. In the foreground, there are dark, dense trees. The middle ground shows a wide expanse of green forest stretching towards distant, misty hills. The sky is filled with soft, white clouds. A solid blue horizontal bar is positioned at the top of the slide, containing the title text in white.

## Specific Objectives

- Create awareness and raise the profile of Atewa
- Facilitate the development of conservation strategy for Atewa
- Facilitate the dev't of alternative livelihoods

# Highlights of Results and Key Achievements

- International summit on Atewa
- Coalition of NGOs (CONAMA formed)
- Press events including Rio+20 celebration
- Website developed & Social media Platform (Friends of Atewa)
- 30 Communities Sensitized
- Interfaith workshops and platforms for Church and Moslem leaders
- Livelihood enhancement (survey, training & startups)
- Schools environmental programme
- Human impact study





# Living Water from the Mountain Project

**Achieve long term protection and sustainable management of Atewa Forest as a public good for securing livelihoods and water management, mitigating climate change impacts and conserving global biodiversity**





# Living Water from the Mountain Project

**Achieve long term protection and sustainable management of Atewa Forest as a public good for securing livelihoods and water management, mitigating climate change impacts and conserving global biodiversity**





## Specific Objectives

1. Improve the knowledge base, i.e. through economic valuation of ecosystem services, for informed decision making on the protection and management of the Atewa Forest and the watersheds it feeds.
2. Address the immediate threats to the integrity of the Atewa Forest Reserve and its consequences for the water basins it feeds, particularly by mining activities and illegal logging.
3. Strengthen the position and role of local communities in the decision making processes and management of Atewa Forest and its environs, and support direct livelihood improvement for communities.
4. Contribute to a supporting, enabling policy environment and institutional capacity for transforming Atewa Forest Reserve into a National Park and propose sustainable finance mechanisms for the Park and its environs.



## AWARENESS RAISING AND ADVOCACY



Atewa International Conference





# Research



**TEEB study**



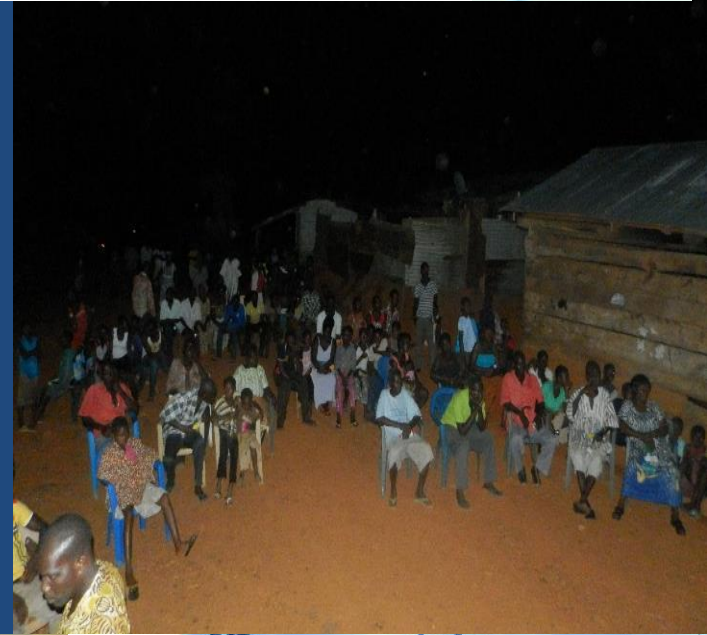
**Bryophytes survey**



**Human impact assessment**



# Community Sensitization





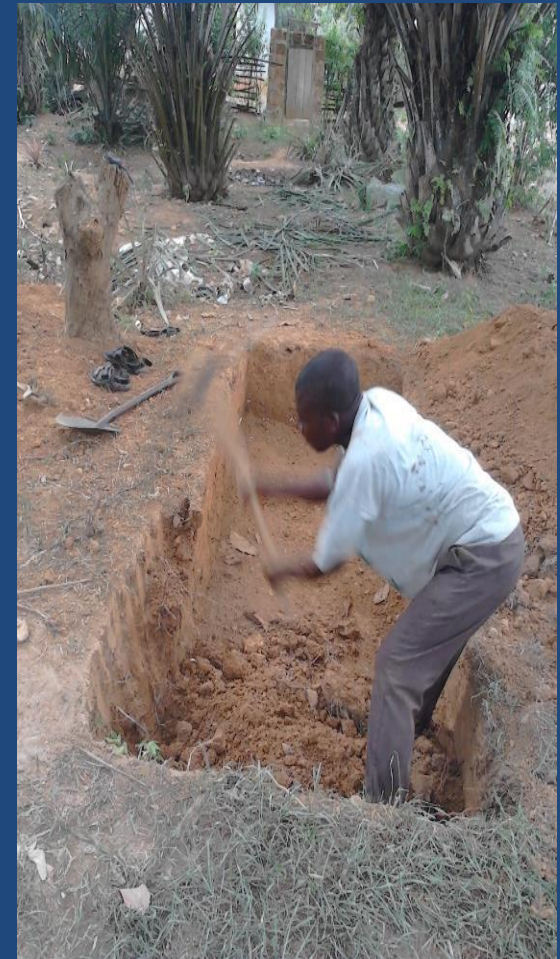
# Stakeholder dialogues & Engagements



Courtesy call on Okyenhene



# Livelihood Enhancement Program





# Schools Program







Soccer for Water



# Moving forward

- Strengthen and widen advocacy campaign
- Obtaining Legislative Instrument to change protection status to National Park
- Facilitate wider ecosystem management through the tackling of illegal mining
- Extension of nature-based livelihood enhancement through ecotourism development





**Thank  
You**