



# Restorasi Ekosistem Riau (RER)

---

Dr. Petrus Gunarso | Conservation Director

**CBD – FAO Workshop**

Bangkok, 1<sup>st</sup> July 2016

# From Conservation to Integrated Landscape Management

---



**2005**

Leader in implementation of High Conservation Value (HCV) assessment.  
250,000 Ha conserved



**2013**

Restorasi Ekosistem Riau (RER) launched to restore 20,000 Ha of degraded peat forests on Kampar Peninsula



**2015**

Restorasi Ekosistem Riau (RER) expanded to 150,000 Ha with multi-year US\$100 Million investment

# Restorasi Ekosistem Riau (RER)

- Centered on landscape approach, RER is a long term collaborative process that brings stakeholders from the community, forestry experts and NGOs
- 60-year Ecosystem Restoration license, launched in 2013
- To date, RER restores 150,000 ha of degraded peat forest across 5 concessions in Kampar peninsula, Riau province, Indonesia
- Dec 2015: Funding commitment of US\$100 million during next 10 years
- Partners with Fauna & Flora International (FFI), Bidara, The Nature Conservancy (TNC)
- Method: Protect, assess, restore, manage



## RER implementation partners:



## RER's Purpose

---

- Purpose is to protect and restore the core Kampar Peninsula for Community, Climate, Biodiversity and Conservation
- Contributes to the APRIL Group's Sustainable Forest Management commitment to achieve a 1:1 target (conservation = planted area)
- Acquired degraded selective logging concessions and manage for Indonesian government as ecosystem restoration concession license
- Provides jobs and livelihood, reducing drivers of deforestation as well providing environmental services

# Landscape Approach to Conservation



The 'ring plantation concept' is about protecting and managing the landscape in the long-term

# RER Approach

---

## PROTECTING

The landscape



RER adopts appropriate protection strategies that include the establishment of a formal guard and patrol function and bespoke community resource management and protection schemes. RER works with local community groups to ensure that solutions are practical and effective.

## ASSESSING

The ecosystem and the social environment



We investigate and assess the present conditions of the flora, fauna and wildlife habitats, assisted by expert partners. Initial assessments of the area, physical and social environments are also completed to establish a baseline against which future assessments can be benchmarked, and to ensure that communities are part of this process.

# RER Approach

---

## RESTORING

Native plant and  
wildlife species



Once protected and assessed, RER carefully restores degraded sites through a process of restocking, using seedlings from surrounding forests. We establish nurseries to cultivate seedlings collected from the wild before carrying out a program of staged replanting. Water level restoration will be developed to maintain water levels critical to the health and functioning of the peat forest ecosystems, with continual evaluation of the effectiveness of our efforts.

## MANAGING

For sustainability



We develop comprehensive, long-term management plans with our advisory panel of international and local specialists to ensure the sustainability of the restored forest areas. These incorporate consultation with local communities, government and adjacent forest concession license-holders, and are distributed widely for feedback.

# Collaborative Landscape Approach

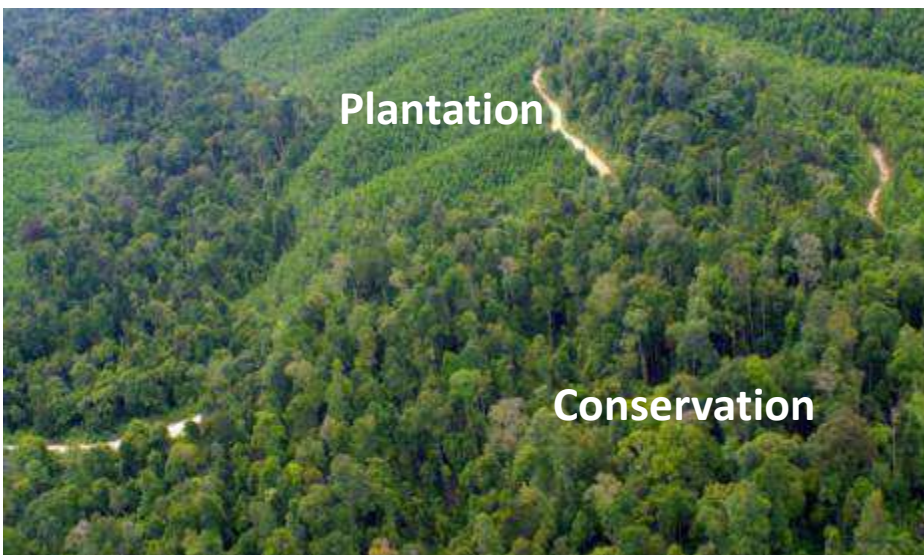
---



- Identify and assess conservation and eco-restoration areas at the core of peninsula
- Protection of conservation areas is important to prevent degradation of land through illegal logging, and unauthorized slash and burn farming
- Community collaboration and partnership critical to long term management

# Conservation & Restoration

---



# Community Partnership

---



- Community involvement in protection, planning and management essential
- Ensures local ways of life are preserved (e.g., fishing)
- Maintain community access to forest resources for non-timber forest product.
- Demonstrating that forest conservation can create local economic growth – from diversified employment to social benefits
- Fire Free Village Program (FFVP) a multi stakeholder approach to fire prevention

# Progress



- 112 tree species, 72 mammals, 193 birds, 75 amphibians and reptile = **452 species**
- Established 3 native-species tree nurseries with 2,500 saplings, with 1,500 now planted
- Ethnography and well-being studies in 6 communities completed
- Eco-village development in Pulau Muda & Segamai villages
- Identified opportunities for community assistance
- Trained 36 Community Forest Rangers who patrol and protect the conservation area, supported by regular air, land and water patrols
- Closed illegal canals, completed buffer plantation
- Conducted camera trap surveys to assess wildlife population and establish a benchmark
- TNC - establishing baseline for landscape planning using the Development by Design approach

# Biodiversity Survey

---

Bearded Pig



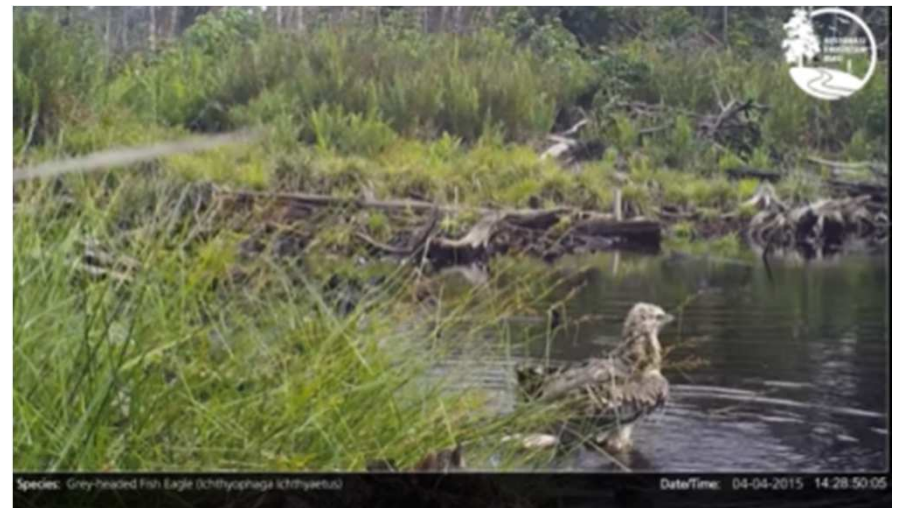
Crestless Firebacks



Sun Bear



Grey-headed Fish Eagle



# Biodiversity Survey: Sumatran Tiger



## Biodiversity Survey: Blue-tailed Bee-eater

---



**Blue-tailed Bee-eater**  
(*Merops philippinus*)

# Biodiversity Survey: Marbled Cat

---



Marbled Cat  
(*Pardofelis marmorata*)  
(VU)



RER is Good for Community,  
Good for the Country – including Conservation and Climate,  
and  
Good for the Company



[www. rekoforest.org](http://www.rekoforest.org)