



United Nations Decade on Biodiversity

Living in harmony
with nature

**HIGH-LEVEL PANEL ON GLOBAL ASSESSMENT OF
RESOURCES FOR IMPLEMENTING THE
STRATEGIC PLAN FOR BIODIVERSITY 2011-2020**

*Presentation to the Regional Workshop for
Latin America and the Caribbean on Resource
Mobilization*

Brasilia, 15 April 2014

Mariana Bellot-Rojas
High-level Panel Member (Mexico)



Convention on
Biological Diversity

Introduction to the High-Level Panel

For further information, visit <http://www.cbd.int/financial/hlp/>
or email hlp@cbd.int

In 2012, **the first High-Level Panel** reported on 'Resourcing the Aichi Biodiversity Targets' to COP-11.

In Decision XI/4, COP-11 welcomed the initial findings, and invited the Panel, in collaboration with other relevant initiatives that could **provide a more bottom-up approach**, to continue its work with a broadened composition and to report back on the results of its work to COP-12.

The High-Level Panel has been **expanded to create a regionally-balanced Panel of fifteen members (we also have observers)**.



Results of the High-Level Panel (Phase I)



The Panel's first phase produced eight key messages:

1. **Political and institutional framework, and strong political will** are needed, particularly at the national and regional level.
2. Investment in natural capital will deliver **significant benefits** for sustainable development.
3. Existing evidence suggests that **benefits are likely to significantly outweigh costs**.
4. There are clear **differences in the relative scale of investment** required to deliver the various Targets. In addition, the investment needed to deliver a Target is not necessarily correlated to its importance.



Results of the High-Level Panel (Phase I)



5. **Many factors affect the magnitude of the estimates of the investments needed** to achieve each of the Targets. These include the scope of the activities to be costed and associated investment opportunities and the potential synergies among Targets as well as uncertainties arising from limitations in data and methodologies.
6. There are **many inter-linkages and co-dependencies** to consider both between the Targets themselves, and between the Targets and other national policy goals.
7. **Funding from a diverse range of international and national sources**, and across different policy areas is required to secure the full range of economic and social benefits to be gained from meeting the Aichi Targets.
8. **Further research** is vital to help further develop and refine the estimates.

Through simple addition of the resource requirements identified for each Target, the costs for implementing the twenty Aichi Biodiversity Targets were estimated at **between US\$ 150 billion and US\$ 440 billion per year**.

Approach of the Second High-Level Panel

For further information, visit <http://www.cbd.int/financial/hlp/>
or email hlp@cbd.int



The second phase of the Panel is:

- providing **strategic leadership and guidance** to the research and identify the priorities within it;
- working directly with the Research Team and CBD Secretariat to **draw key messages, conclusions and recommendations** from the research;
- identify **case studies and examples** from all regions to support messages.
- **engaging with CBD Parties to raise awareness** of the study and its findings; and
- **overseeing delivery** of a draft report for WGRI-5 consideration and feedback, and a final report for COP-12.

Approach of the 2^o High-Level Panel



The High-Level Panel is considering the **range of the costs of implementing the activities needed** to achieve the targets, and **identifying the opportunities** to most cost effectively secure such benefits through actions **both within and outside the biodiversity sector**.

In response to the following questions, the benefits of meeting the Aichi Biodiversity Targets will be assessed by **examining both the positive impacts on biodiversity directly and the wider benefits to society** that result from the investments and policy developments required:

- Benefits
- Investment needs
- Resource requirements
- Policy alignment and development
- Cost effectiveness
- Benefits and costs

Key main issues for the 2^o High-Level Panel messages (*ongoing work*)



1. Biodiversity and ecosystems management can deliver **benefits on sustainable development goals** at global, national and local scale, particularly food security, water security, livelihoods and disaster risk reduction, among other development goals.
2. Biodiversity and ecosystems contributing to **climate mitigation, adaptation and resilience** (synergies with CC agenda)
3. Because **biodiversity loss disproportionately affects vulnerable populations**, investments in biodiversity and ecosystems can help ensure the provisioning of key services, and can ensure access to critical biodiversity resources
4. Biodiversity and **ecosystems provide insurance value** (idea of avoiding costs in the future, and cost of inaction will increase the future cost)

Key main issues for the 2^o High-Level Panel messages (*ongoing work*)



5. Investing in ‘state of the art’ institutions, improved governance, dynamic and transparent legal and policy frameworks with smart finance will ensure the delivery of the Aichi targets.
6. **Enhance synergies, and promote alignment across sectors** is needed for reaching biodiversity targets. There are significant alignment between the Aichi Targets and other policy agendas, including development, growth, poverty alleviation, climate change, agriculture, water and health.
7. The High-Level Panel’s first report to CBD COP11 estimated the resource needs at US\$150-440 billion p.a. between 2013 and 2020. (***Huge number!***)
8. The global **per capita** investment needed for biodiversity conservation is estimated at **between \$ 21 and \$63**. This compares with a conservative global per capita benefits of between 2 to 7 times the per capita cost from biodiversity conservation and sustainable use. The above estimates are inclusive of both direct and indirect biodiversity relevant budgets
9. Decision makers are requested **to assess and cover resource gaps** by committing financial resources to biodiversity conservation activities on a sustained and predictable basis.

Overview of Latin America & Caribbean review

For further information, visit <http://www.cbd.int/financial/hlp/>
or email hlp@cbd.int



The Latin America and the Caribbean region is **extremely rich in its biological resources and ecosystems**, as well as in its diversity of cultures and economic and social conditions.

The region's ecosystems provide a wide range of valuable services, which are vital for people, the economy and the region's development. Meeting the Aichi targets will help to secure the delivery of these services, but **requires substantial challenges to be overcome**.

The review, carried out by ICF GHK – a UK-based consultancy who are also doing the global research for the High-Level Panel – presents **the findings of a review of the benefits and costs of meeting the Aichi Targets in the region**.

Overview of Latin America & Caribbean review

For further information, visit <http://www.cbd.int/financial/hlp/>
or email hlp@cbd.int



Methodology

This research has involved:

- An extensive web and literature review;
- An extensive search of international databases, especially the Environmental Valuation Reference Inventory™ (EVRI™);
- An analysis of resource requirements, using the database created by Waldron *et al.* (2012);
- Contact with key experts, in order to signpost relevant evidence and collate case study information;
- Another source of information was the Latin America Environmental Economics programme (LACEEP) network where some articles were used to illustrate some of the case studies;
- Publications of UNDP, FAO and TNC also served as key reference sources.

Conclusions of Latin America & Caribbean review

Benefits

LAC proved to be the region with the highest number and experience of “Payment for Environmental Services” and conservation schemes put in place and working.

Strongest evidence is available for particular Targets, especially relating to the **conservation and restoration of forests, wetlands, mangroves and coral reefs**, and the link to climate regulation. (Aichi Targets 5, 7, 11, 14 and 15)

There is clear need for urgent action to improve the sustainability of the **region’s fisheries**, and the substantial benefits of delivering Aichi Target 6.

The benefits of biodiversity conservation are strongest for low-income local communities. **Increasing recognition of new potential sources of revenues**, including through PES schemes.



Conclusions of Latin America & Caribbean review

Investment needs

Strong progress made towards achieving some Targets (e.g. 11, 12, 17, 18 & 19).

Low level of progress on Targets 3, 6, 9, 10, 13, 14 & 15, suggesting **effort and investment need to be devoted to these areas.**

Challenges include political barriers. **Priority focus on creation of enabling conditions and institutional** (development of appropriate governance and legal frameworks, incentive mechanisms, capacity and knowledge).

Priorities differ across the sub-regions:

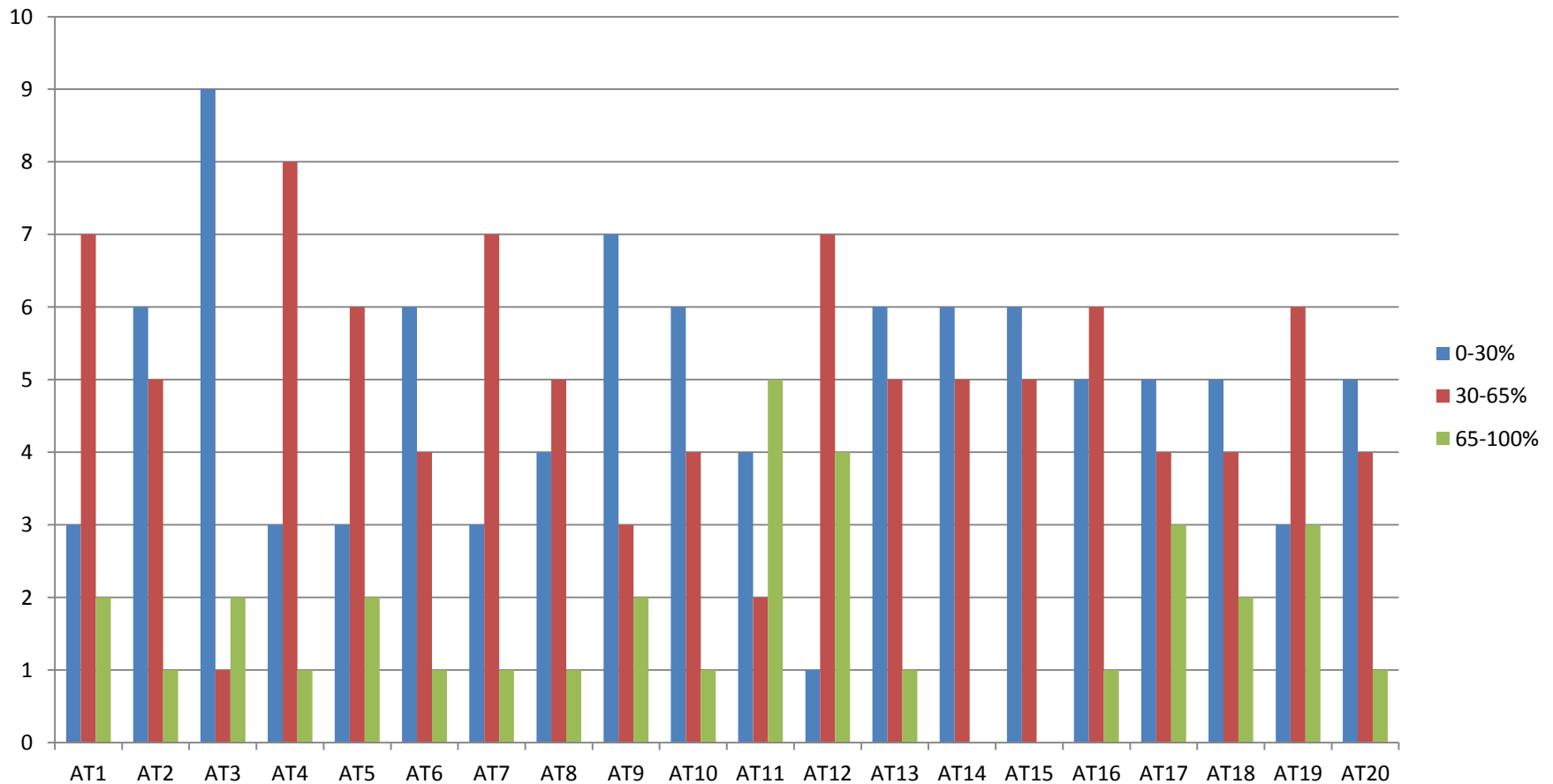
- Caribbean – conservation of marine and coastal environments.
- Central & South America – development of sustainable financing mechanism

The Aichi targets are interrelated and effective implementation **depends on sequencing of actions, capacity building and appropriate institutional and policy frameworks** to deliver Targets 1-4 & 17-20 and to create the conditions to deliver all the Targets.



Investment needs

For further information, visit <http://www.cbd.int/financial/hlp/>
or email hlp@cbd.int



Countries' estimates of their level of achievement of Aichi targets

Source: CDB 2013

This figure does not include information from Costa Rica, Colombia, Ecuador, Guatemala or Peru.

Conclusions of Latin America & Caribbean review



Current Spending

Only evidence found on actions related to protected areas or areas which need to be cover to protect species and key ecosystems (Aichi Targets 3, 10, 11 & 12).

The **total annual conservation expenditures in the region have been estimated at US\$632 million per year** (2001-2008):

- Central America: US\$203 million pa, mostly from international donors and bilateral cooperation
- South America: US\$395 million pa, mostly from domestic resources
- Caribbean: US\$33 million pa, mostly from domestic resources

Total current funding for protected areas:

- Central America: US\$141 million pa (funding gap: 1.5-2.3 times)
- South America: US\$239million pa (funding gap: 2 to 3.2 times)
- Caribbean: US\$54 million pa (funding gap: not given)

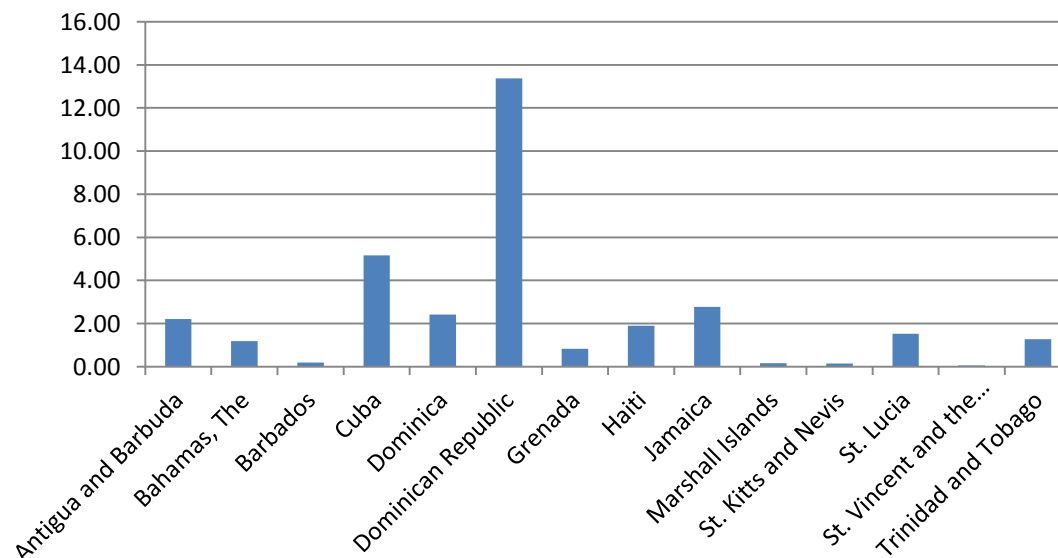
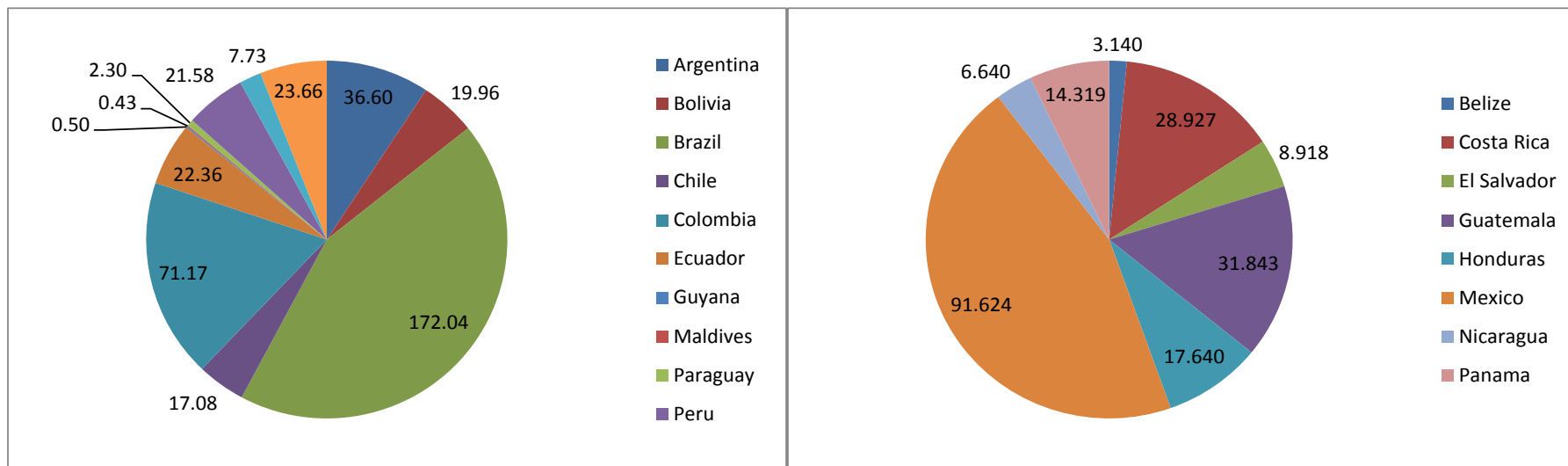
Resource requirements increase significantly if other activities, where progress has been limited, are considered (e.g. restoration of key ecosystems, Targets 14 & 15).

Resource needs

Current Spending

For further information, visit <http://www.cbd.int/financial/hlp/>
or email hlp@cbd.int

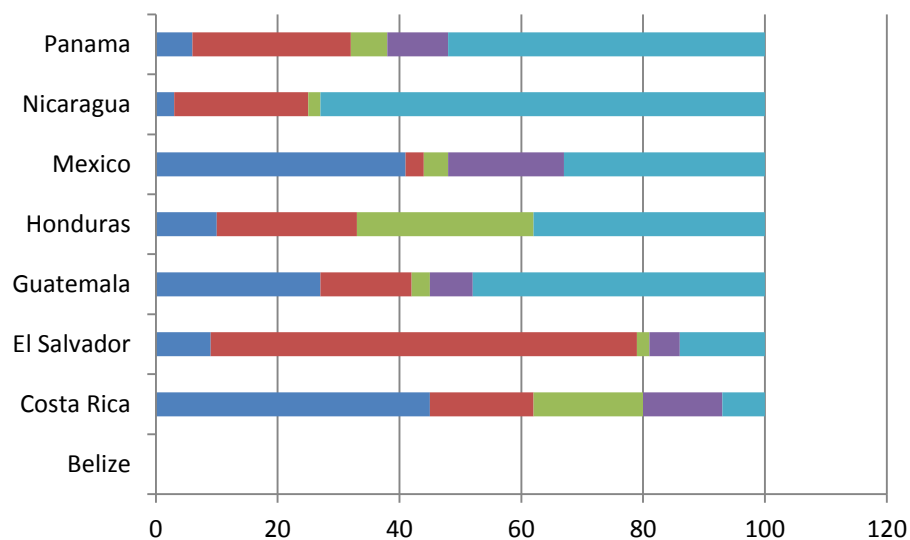
Total average annual spending (2001-2008) in US\$ million



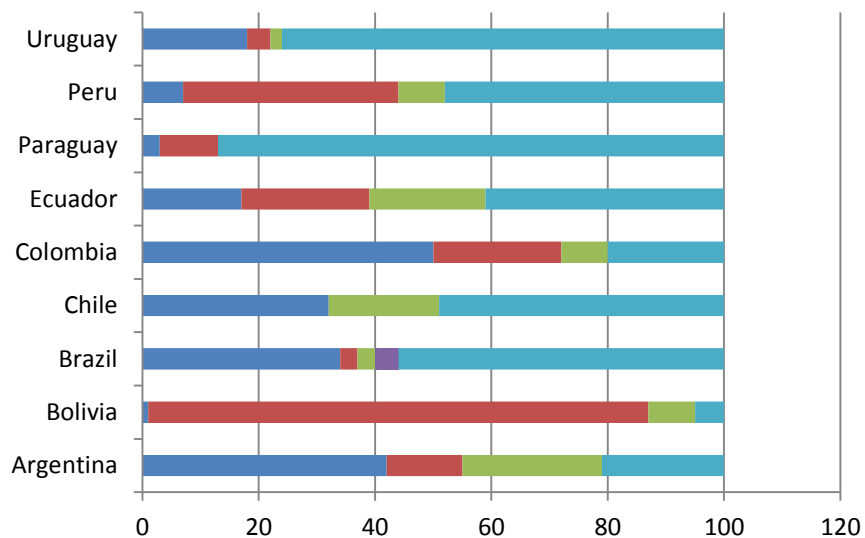
Resource needs

For further information, visit <http://www.cbd.int/financial/hlp/>
or email hlp@cbd.int

Financial resources and gaps as a percentage of financial needs under the basic scenario



- Government funds
- International cooperation
- PA revenues
- Other
- Basic gaps



Source: From Bovarnick *et al.* (2010)

Conclusions of Latin America & Caribbean review



Policy Alignment and Development

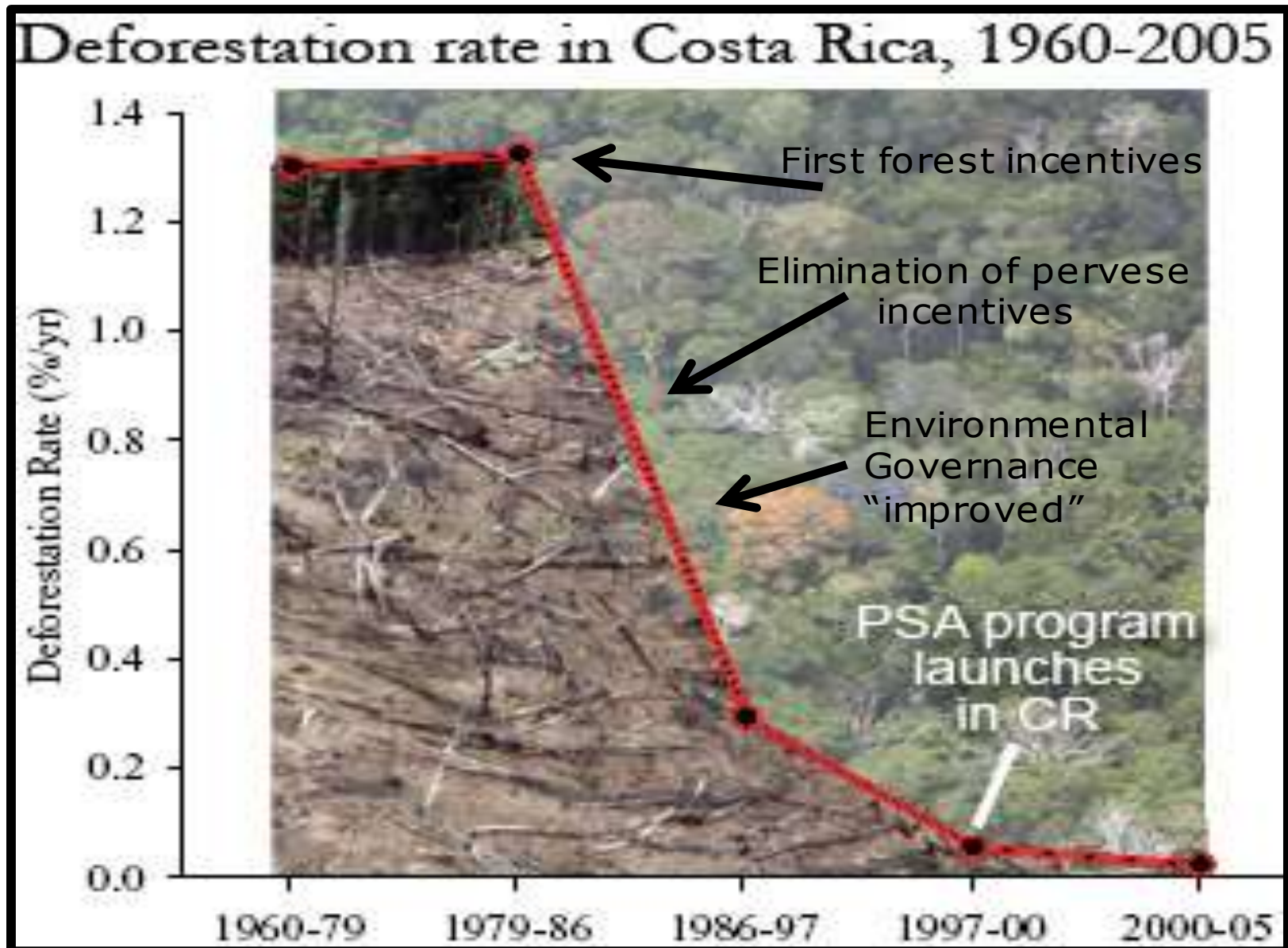
There is a strong connection between environmental degradation and the social economic conditions facing local populations.

Providing secure and safe environmental conditions, and maintaining the delivery of key ecosystem services, **contributes to the people's livelihoods and to development outcomes.**

Most of biodiversity conservation challenges are strongly related to poverty alleviation.

Synergies and overlaps with other policy agendas mean that mainstreaming of biodiversity objectives is important, and has implications for awareness, governance, capacity and co-ordination of delivery.

Policy alignment: multiple benefits of a policy



Conclusions of Latin America & Caribbean review



Cost Effectiveness

Maintaining ecosystems and their services can save costs compared to letting them decline.

The way that the targets are delivered – and the sequencing of overall delivery – will have **an important influence on their overall costs**.

Costs and Benefits

Only Ecuador has done a complete gap analysis for the cost of achieving all 20 Aichi Targets.

The **strongest evidence that the benefits of conservation exceed the costs relates to forest conservation**, where the net benefits of conservation through REDD+ and other PES schemes, particularly through avoided CO₂ emissions.

Services delivered by the most important ecosystems such as mangroves, tropical forests and wetlands are **likely to reach many hundreds of billions of dollars per year**.

Synergies

Identifying synergies and enhancing policy alignments is key to increase investments for Aichi Targets.



United Nations Decade on Biodiversity

Living in harmony
with nature

HIGH-LEVEL PANEL ON GLOBAL ASSESSMENT OF RESOURCES FOR IMPLEMENTING THE STRATEGIC PLAN FOR BIODIVERSITY 2011-2020

Gracias

For further information, visit <http://www.cbd.int/financial/hlp/>
or email hlp@cbd.int



Convention on
Biological Diversity