



Global Expert Workshop on Biodiversity Benefits of Reducing Emissions from Deforestation and Forest Degradation in Developing Countries

Lessons Learned from the Implementation of ITTO **REDDES** Program

Eduardo Mansur
Assistant Director
INTERNATIONAL TROPICAL TIMBER ORGANIZATION

Nairobi, 20-23 September 2010



Outline

- ITTO at work
- ITTO REDD+ Piloting Projects:
 - **REDDES**: Reducing Deforestation and Forest Degradation and Enhancing Environmental Services
 - A Public-Private Partnership to Promote REDD +
- Lessons learned and Conclusions



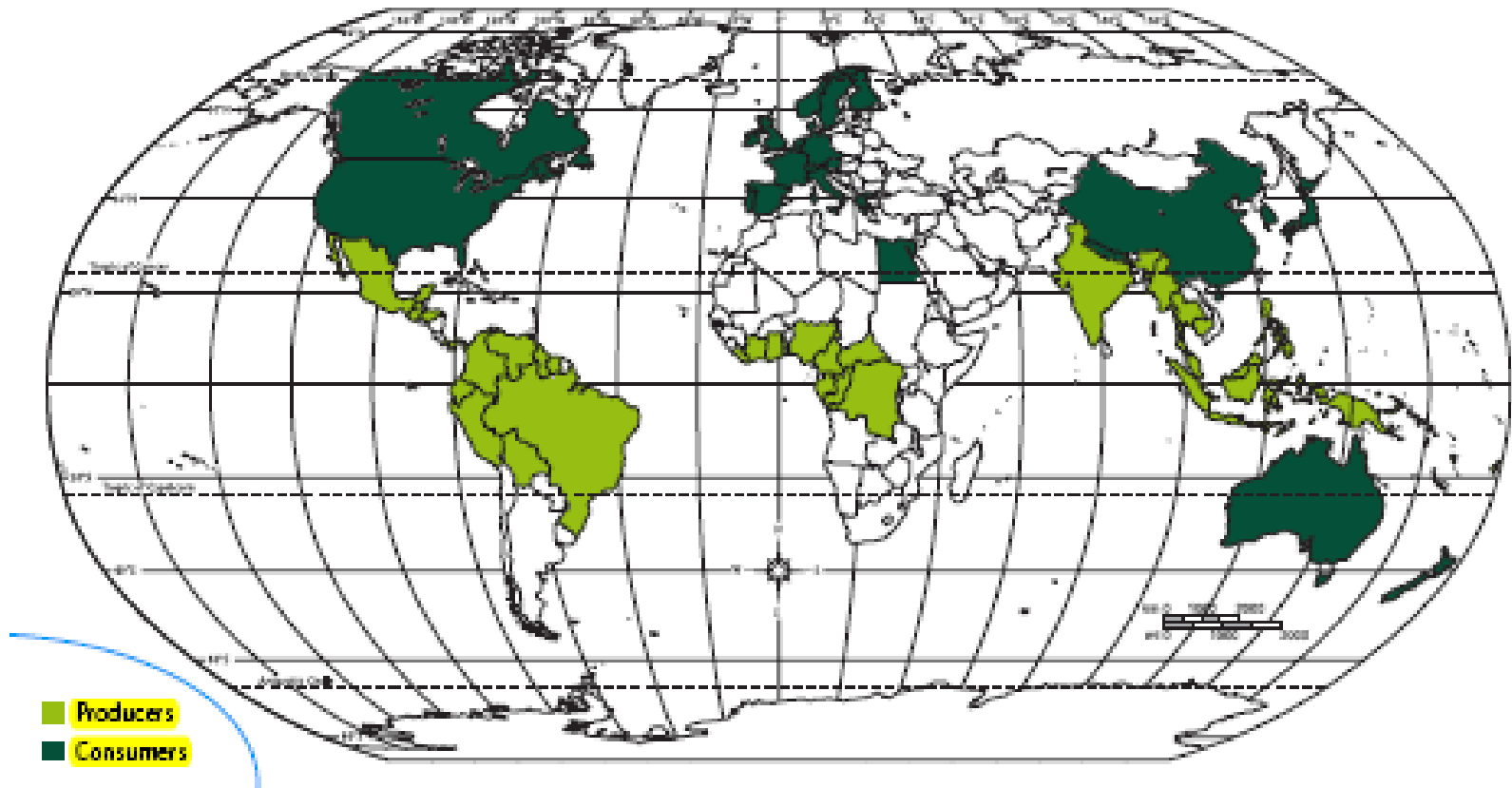
The INTERNATIONAL TROPICAL TIMBER ORGANIZATION (ITTO)

- an **intergovernmental organization** established under the auspices of the UNCTAD in 1986 to operate **International Tropical Timber Agreement (ITTA)**, legally binding agreement;
- based in Yokohama, Japan;
- promoting the **conservation and sustainable management, use and trade** of tropical forest resources;
- governed by **ITTC** (Council)





ITTO MEMBERS (60): Producers (33) & Consumers (27)



- ▶ 80% of the world's tropical forests
- ▶ 90% of the world's tropical timber trade

Focus of SM of Tropical Natural Forests

500 mm ha

900 mm ha

100 mm ha

400 mm ha



**Non-accessible
old-growth forest,
Forest Protected
Areas in the
Tropics
(27% of tropical
Forest area in
2008)**

**Multiple-Use Forest Area:
Opened-up forests,
Accessible forest reserves,
Degraded old-growth forests,
Secondary forests in
all succession stages...**

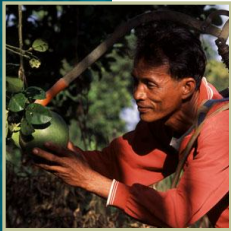
**Timber production
forests**

**Forest plantations,
agroforestry,**

Achieving the Objectives of the ITTA

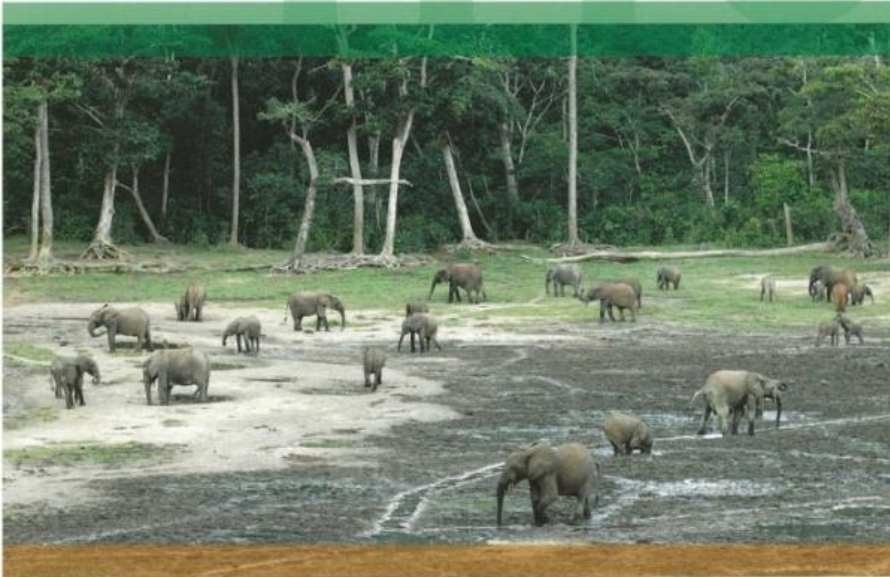


- Policy work (guidelines, tools)
- Project work (capacity building)



POLICY DEVELOPMENT
17

ITTO/IUCN Guidelines for the conservation and sustainable use of biodiversity in tropical timber production forests



A joint publication of the International Tropical Timber Organization
and the International Union for the Conservation of Nature

ITTO Policy Development Series No 17



The ITTO/IUCN Guidelines for the conservation and sustainable use of biodiversity in tropical timber production forests

- 2009

- 11 Principles, 46
Guidelines

- Priority actions



ITTO in the field: Assist member countries to put policies into practice

Since 1987, funded 700 projects, pre-projects and activities valued at more than US\$340 million to build capacity of ITTO producer member countries towards the achievement of SFM

Donors:



Japan



Switzerland



United States



Norway



Netherlands

ITTO Thematic Programme on REDDES



General objective:

To reduce deforestation and forest degradation, enhance environmental services and help improve forest dependant livelihoods through sustainable management of tropical forests, and forest restoration

Specific objective:

To strengthen the capacity of ITTO developing member countries and their stakeholders to:

- reduce **unplanned deforestation**
- reduce **forest degradation**
- maintain and enhance **climate change mitigation and other environmental services** of tropical forests; and
- contribute to the **social and economic sustainability** of forest-dependent communities

REDDES Programme Strategy

Scope

CC mitigation & adaptation

Biodiversity

Soil & water conservation

Disaster prevention

Recreation

NTFPs

Country level

Assessment and diagnosis

Enabling conditions & capacity building

Demonstration activities

Scaling up & dissemination

Regional and international level

Methodologies, accounting, monitoring & verification

Policies, financing mech., training

Validated technologies & approaches

Knowledge management

Cooperation & partnerships

General objective

- improved livelihoods
- reduced deforestation and forest degradation

Specific objective

- capacity strengthened

Target groups

- ultimate: local communities, forest owners
- inter-mediate: government agencies, policy makers, CSOs, other stake-holders

REDDES Advisory Committee

- Dr. Ernest Foli, Ghana (Producer)
- Dr. Norini Haron, Malaysia (Producer)
- Ing. Rocio Malleux Hernani, Peru (Producer)
- Ms. Thais Linhares Juvenal, Brazil (Producer)
- Mr. Takuo Sato, Japan (Consumer)
- Dr. William de Groot, Canada (Consumer)
- Dr. Carmenza Robledo, Switzerland (Consumer)
- Jose Antonio Prado, FAO, Collaborating Institution on behalf of UN-REDD

ITTO REDDES Demonstration Projects

- 
1. Monitoring Pan-Amazonian forest (Brazil)
 2. Social processes for SFM (Guatemala)
 3. Resources assessment & monitoring (Guyana)
 4. Communities and PES (Peru)
 5. Carbon stock inventory (Dem Rep Congo)
 6. Collaborative management for REDD (Ghana)
 7. PES in degraded/secondary forests (China)
 8. SFM to enhance carbon stocks (Indonesia)
 9. REDD in south Sumatra peatland (Indonesia)
 10. Voluntary carbon marketing scheme (ITTO)

Total allocation 2009: USD 4,000,000





Monitoring Pan-Amazonian Forest (Brazil) (1)

Monitoring deforestation, logging and land use change in the Pan Amazonian Forest – PANAMAZON II

■ Executing Agency:

**AMAZON
COOPERATION TREATY
ORGANIZATION (ACTO)**

■ Duration & Budget:

4 Yrs (Mar 2010-Feb 2014)

Total: US\$ 7.873.244

ITTO (1.050.320), ACTO
(356.854), ACTO MEMBER
COUNTRIES (1.808.000),
OTHERS (FUNDO
AMAZONIA; 4.658.070)



Seven ACTO Members Countries for the project



Monitoring Pan-Amazonian Forest (Brazil) (2)

■ Outputs

Outputs 1:

National plans for the implementation of a forest cover monitoring system prepared

Outputs 2:

National Plans for **forest cover monitoring system** implemented

Outputs 3:

Spaces for **regional dialogue and coordination** on forest management harmonized and other C&I strengthened





Carbon Stock Inventory in DR Congo

Complementary to UN-REDD

■ Executing Agency:

Dep of Inventory and Forest Management (DIAF)

■ Duration & Budget:

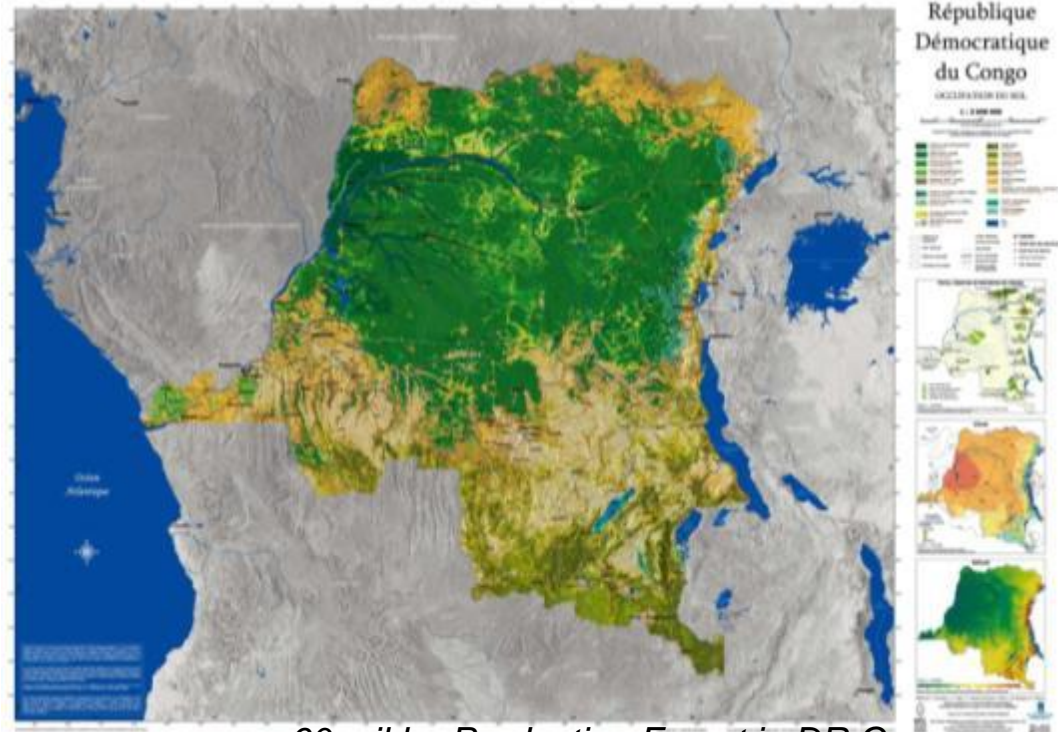
- 1 yr (Mar 2010-Feb 2011)
- US\$476,000

■ Project Outputs:

- 1) 70 - 80 technicians of the DIAF, DDD (and other partners) are formed to execute the national forest carbon inventory
- 2) Acquisition, set up and distribution of equipments to operate the national forest carbon inventory

Technical guidance from the on-going ITTO Project

“Multispectral Three-Dimensional Aerial Digital Imagery for Monitoring SFM in Congo”



60 mil ha Production Forest in DR Congo



SFM to enhance carbon stocks in Indonesia

- **Executing Agency:**

DG of Forest Production Development, MoF

- **Duration & Budget:**

2 yrs (April 2010-Mar 2012), US\$535,000

- **Specific Objective:**

To develop national strategy to maintain and increase forest carbon stock through SFM

Completed ITTO project “**Internal Monitoring of SFM Performance at Forest Management Unit Level** [PD 389/05 Rev. 2 (F)]” will complement



REDD in South Sumatra Peatland in Indonesia

■ Specific Objectives:

to enhance conservation and restoration of Peat Swamp Forest ecosystems in South Sumatra

■ Expected Outputs:

- I. Institutional setting to prevent further deforestation and forest degradation
- II. Sound and applicable technology in restoration and rehabilitation of PSF
- III. Demonstration activities with the plantation of indigenous species



ITTO Partnerships in Support to Countries

COUNTRY LEADERSHIP

1. Reducing emissions from deforestation
2. Reducing emissions from forest degradation
3. Conservation of carbon stocks
4. Sustainable management of forests
5. Enhancement of carbon stocks

Supporting REDD +

- UN-REDD
- FCPF
- FIP
- Bilateral cooperation
- Private sector
- Other initiatives:
CBD/ITTO Collaborative Project

Harnessing synergies

A Public-Private Partnership to promote REDD+



(Japan)

Asia : Indonesia (under implementation)

Africa : Gabon (under project identification)

Latin America : Brazil (under project identification)

A Public-Private Partnership to promote REDD

REDD Conservation Project in Indonesia

Meru Betiri National Park, Java



Executing Agency:

FORDA, MoF

**Duration & ITTO
budget**

4 yrs (Jan 2010-Dec 2014)

US\$900,000



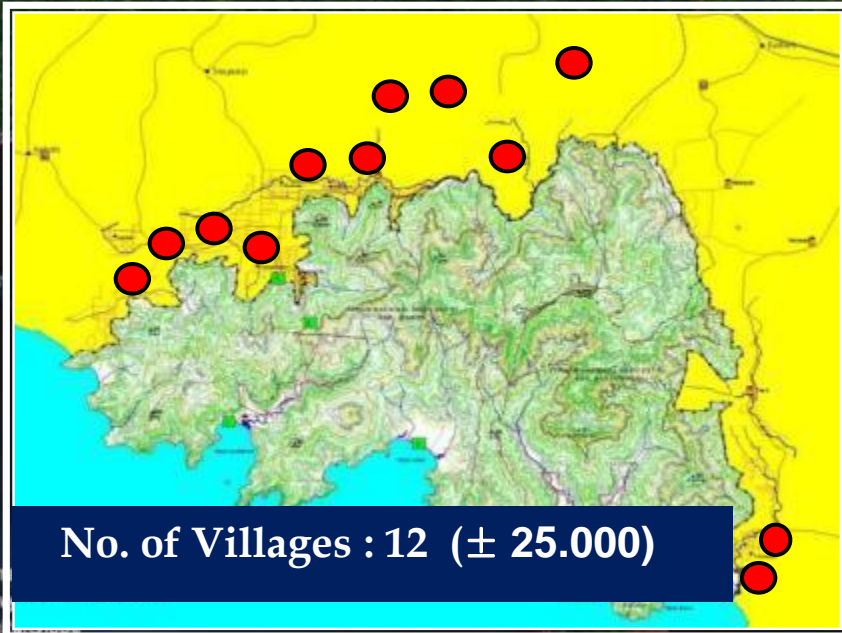
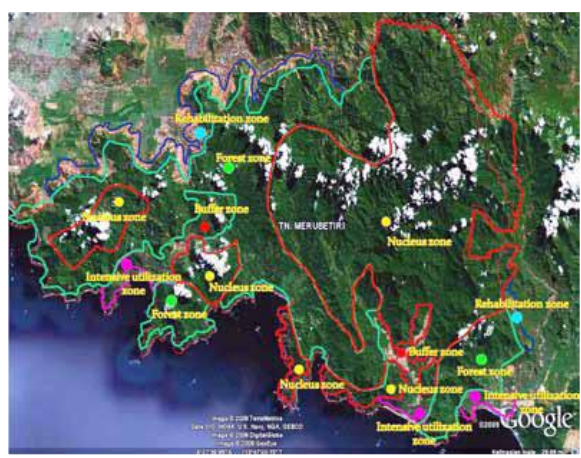
**Ceremony at Indonesian Embassy
(Tokyo, Oct 2009)**



REDD Conservation Project in Indonesia

TN. MERUBETIRI

Land use plan



Meru Betiri NP, Java

REDD+ Conservation Project in Indonesia

Illegal Activities in Meru Betiri NP



Rotan



Primata



Kayu Pertukangan



Bambu



Penyu & Telur



Jukung



Burung



REDD+ Demonstration Project in Indonesia: Challenges

- ▣ To develop a robust **measurable, reportable and verifiable (MRV) system** for monitoring REDD and enhancement of forest carbon stocks in Meru Betiri National Park (MBNP)
- ▣ To improve the **livelihoods of local communities** living inside and in the surrounding area of MBNP through participation in avoiding deforestation, degradation and biodiversity loss



Added Value of **REDDES**



- **Complementarity** to other initiatives in REDD+
- Comprehensive approach covering **all environmental services**
- Focus on **SFM** in reducing deforestation and degradation, particularly on the “**second D**”
- Focus on :
 - **capacity building**, also at FMU/local implementation to deliver climate and other environmental benefits (upfront support)
 - **demonstration** (rec. Bali Action Plan)
 - Promotin **Payment for ES**
- **Geographic coverage** (incl. countries not covered by other initiatives)
- ITTO's **comparative advantage**: more than 700 projects, guidelines, training, etc.

Conclusions



- **Carbon** overshadowing other ES in the current debate and donor support
- **Biodiversity conservation**: more of an issue on the other ITTO SFM related projects than on REDDES projects
- **The ITTO/IUCN Biodiversity Guidelines** can be of help to assess biodiversity conservation outside protected areas

Conclusions



- The REDDES Programme is on **fast track** to assist 36 ITTO developing member countries
- **Cooperation** with other REDD+ initiatives including multilateral and bilateral programmes will enhance synergies and complementarity to the benefit of participating countries
- **Further support** from donors and partners is needed for the programme to further contribute to enhancing **environmental services** and to **REDD+** implementation



Thank you for your attention

mansur@itto.int

www.itto.int