



UN-REDD
PROGRAMME

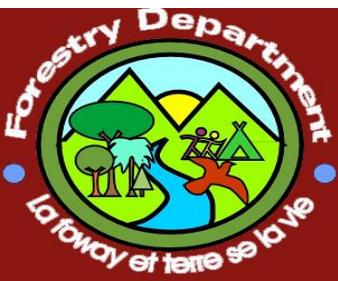


Saint Lucia

Forestry Department, Ministry of Agriculture, Forestry, Lands & Fisheries

*Global expert workshop on REDD-plus Biodiversity
Benefits, Nairobi, Kenya, 20-23 September 2010*

Lyndon John
Assistant Chief Forest Officer
Forestry Department
Saint Lucia

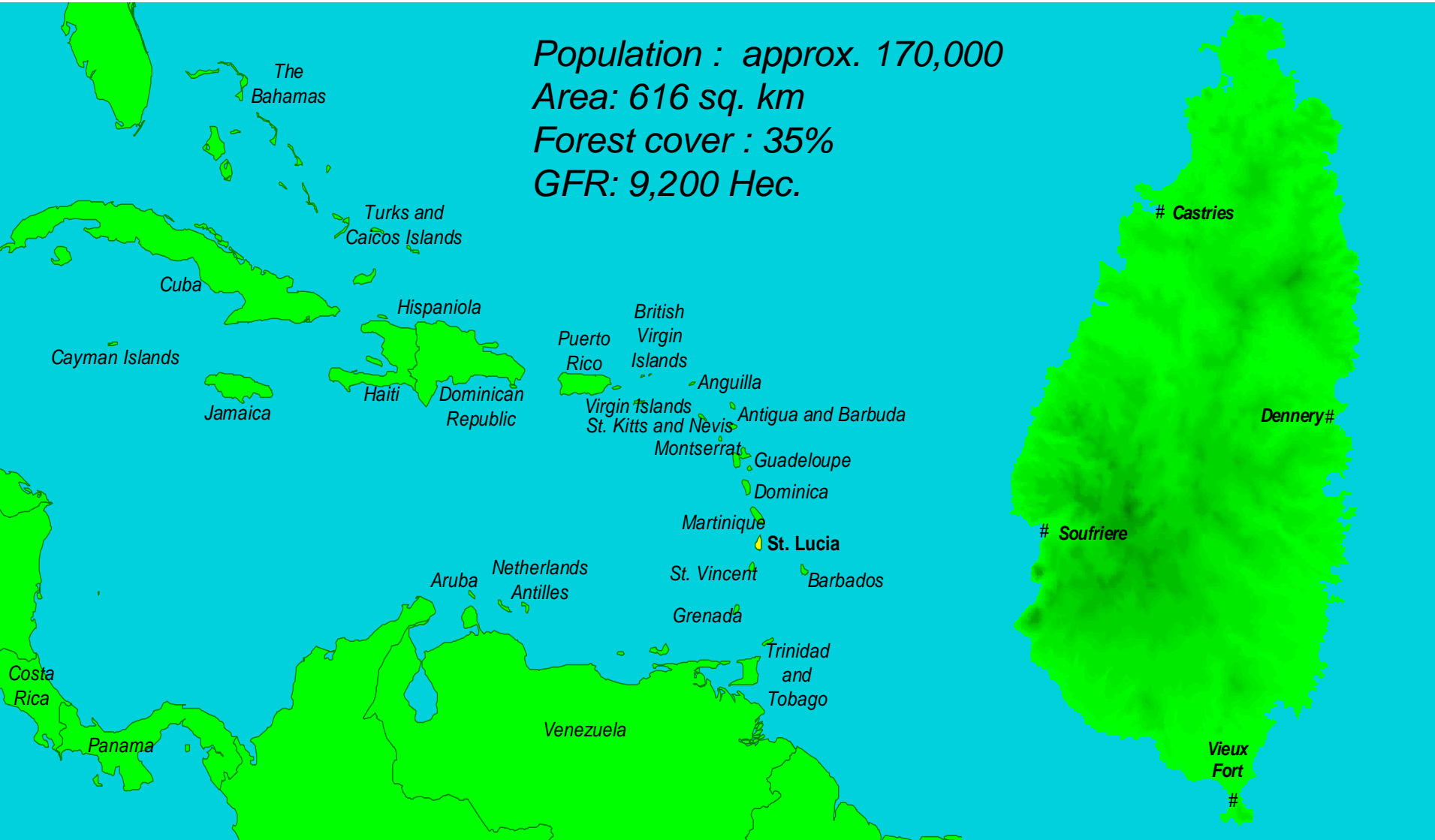




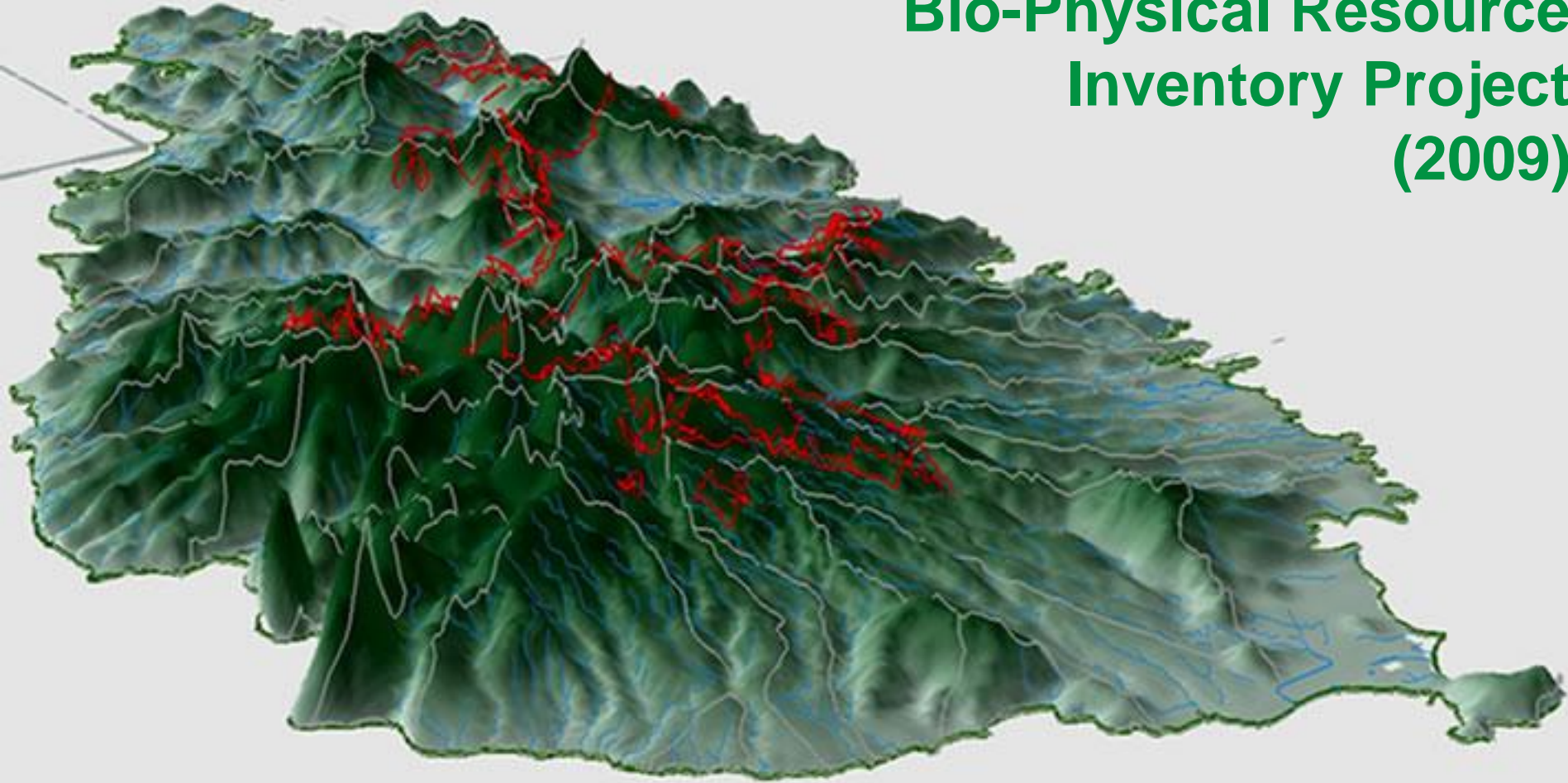
Saint Lucia



Central Statistical Office
<http://www.stats.gov.lc>
Email: statsdept@candw.lc



National Forest Demarcation & Bio-Physical Resource Inventory Project (2009)



Vijay Datadin

GIS & Data Management Specialist





The National GHG data indicate that the Land-Use Change and Forestry Sector in Saint Lucia is still a net source of CO₂ emissions. However, the level of emissions has significantly decreased.

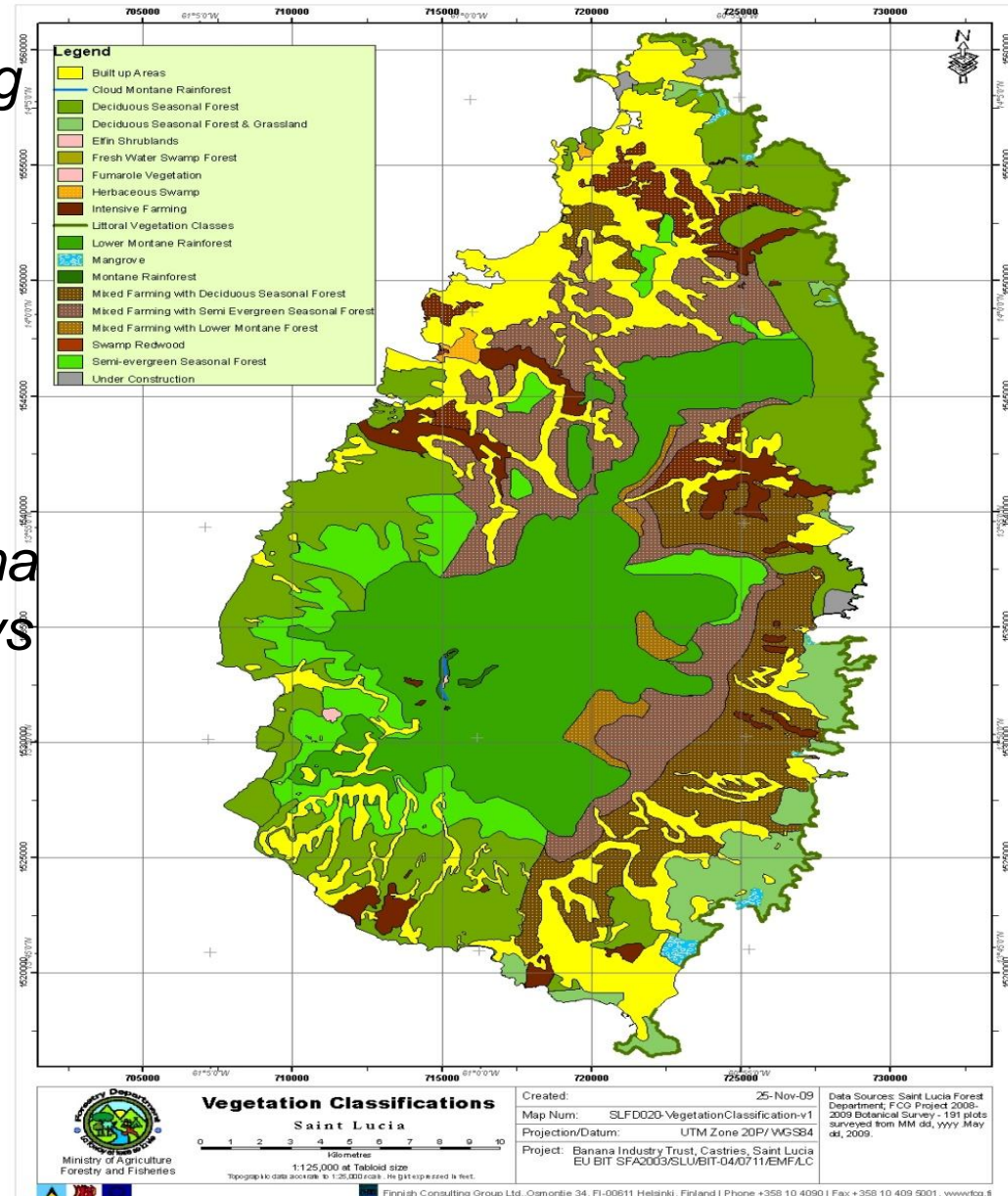
- *Total CO₂ emissions **decreased by almost 75%** between 1994 and 2000.*
- *The rate of deforestation has decreased substantially within this time period. Annual average rate of deforestation in 1994 was **500 ha per year**.*
- *Estimated rate of deforestation for the period between 1994 and 2000 indicate has fallen to approximately **100 ha per year**.*
- *As a result in the year 2000 it is estimated that this sector emitted approximately **21 Gg** of CO₂ as opposed to **85 Gg in 1994**.*



A new vegetation map, showing the forest types, is currently prepared.

35% of island under some forest type

Mapping overlays exist for fauna and flora but no carbon overlays





Saint Lucia's diversity of forest types supports a great variety of species.





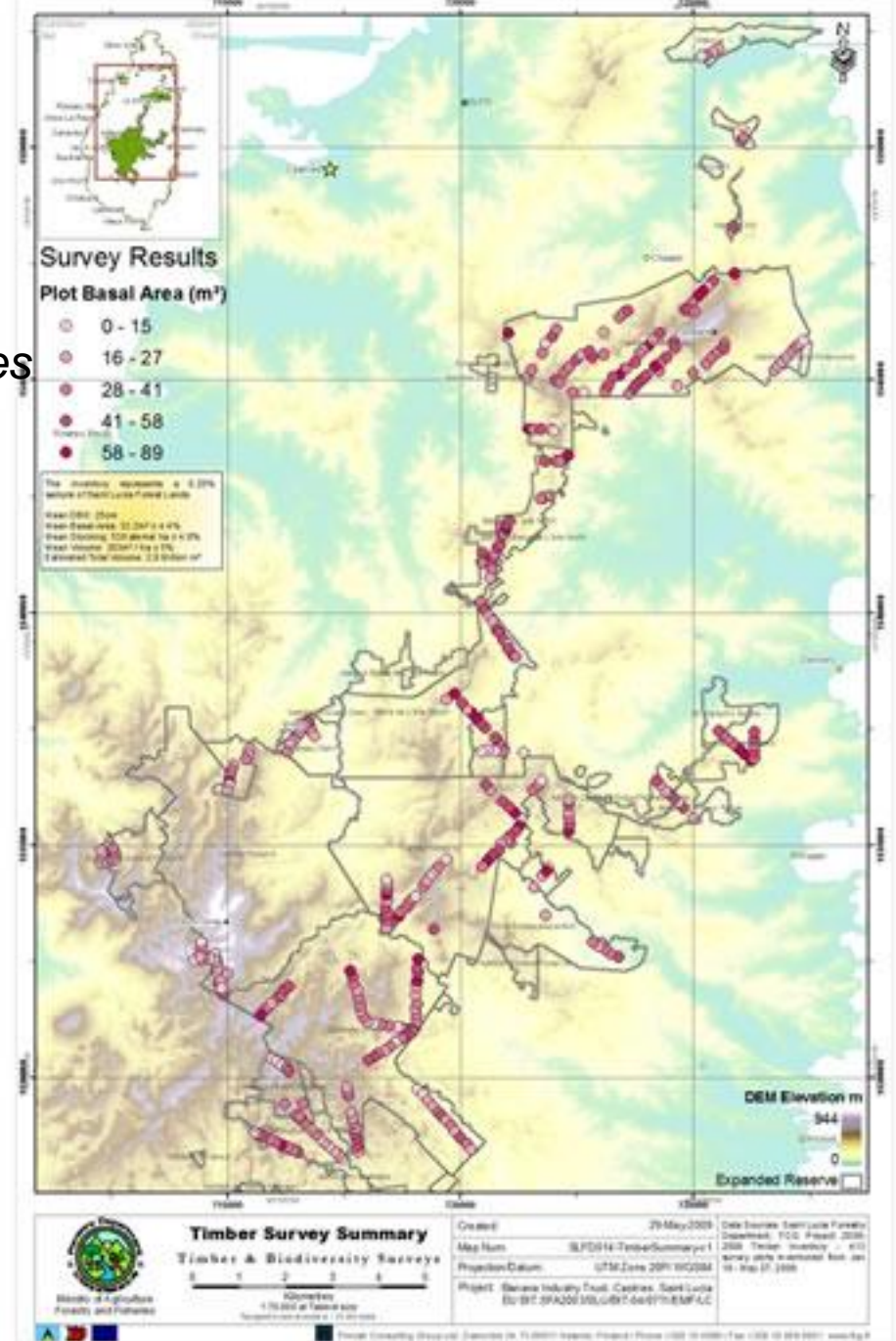
945 native 'higher plants'
137 native ferns and club mosses
c. 50 native resident birds
17 native reptiles
2 native amphibians
10 native mammals
c. 1,400 beetles
> 1,000's other invertebrates



Timber inventory revealed
Government Forest Reserves has:

305 Cubic metres timber per hec.

Total cubic volume 2.8 million cubic metres





UN-REDD
PROGRAMME



[Saint Lucia experience with multiple benefits]

What is the national structure for REDD planning? **None in place at the moment**

However, St. Lucia participates in CARICOM and AOSIS discourse on REDD+. CARICOM recognises; the value and potential of standing forest, including pristine rainforest, and our affirmation of its potential contribution to Reduced Emissions from Deforestation and Degradation (REDD). Forest conservation or avoided deforestation and sustainable management of forests are important mitigation tools against climate change in a post 2012 Agreement.



We also support the approach to harmonizing climate change mitigation and economic development as proposed by Guyana in its Low Carbon Development Strategy;

- How are biodiversity experts involved? (**Forestry Department leads on terrestrial biodiversity assessments and is involved in regional forest sector dialogues on REDD, however not in mainstream FCCC/REDD discourse**)
- Few or no experiences from the voluntary carbon market involving SIDS for us to draw from



UN-REDD
PROGRAMME



[Tools at national level]

No National Ecological Gap study done directly for CBD,
However, following recent studies address the Ecological gap
priorities

- a Systems of Protected Areas for Saint Lucia Plan is completed, and which addresses much of the Ecological gap requirements
- Completion of National Forest Demarcation & Bio-Physical Resource Inventory Project with Forest Management Information System in place (FMIS) with GIS mapping and high resolution IKONOS imagery.



UN-REDD
PROGRAMME



[local and indigenous community participation and benefits]

Communities and private forest lands are adjacent to Government Forest Reserves but not within Reserve.

One major NGO- St. Lucia National Trust (SLNT) is sensitised and manages some Protected Areas.



UN-REDD
PROGRAMME



Opportunities and challenges]

- Prime minister of Saint Lucia is chairman on Sustainable Development in CARICOM so there is a high level of political awareness of CC issues
- Completion of National Forest Demarcation & Bio-Physical Resource Inventory Project with Forest Management Information System in place (FMIS) with GIS mapping and high resolution IKONOS imagery sets base for REDD+.

OBSTACLES

1. Present lack of funds in existing programmes for REDD preparations
2. Uncertainty regarding the status of REDD-carbon credits in post Kyoto framework

Opportunities & Constraints cont'd.



No major obstacles for achieving multiple benefits as Saint Lucia has had longstanding tradition of multiple purpose forest management for :

- Soil and Water/ Recreation/Biodiversity/Tourism
- Given work done to date, the foundation for REDD+ with multiple benefit objectives fits Saint Lucia development objectives



Recommendation calls for both social and ecosystem approach for mitigation and adaptation to climate change. Some of these recommendations include:

- Need to strengthen national understanding and support for forest biodiversity conservation, with special attention to vulnerability and adaptation to climate change.
- Foster the development of civil society organizations as a tool for lobbying for and enhancing the mitigation of climate change impacts, both social and ecological impacts.



- Establish policies and plans with clear objectives for the future forest and biodiversity under climate change,
- Allocation of resources to develop the capacity to determine the vulnerability (sensitivity, adaptive capacity) of forest ecosystems and biodiversity, as well as society to impact of climate change.
- Conduct applied research to inform and monitor to determine the state of the forest and identify when critical thresholds are reached.



- Develop strategic plans to reduce vulnerability and speed recovery of forest ecosystems and biodiversity after disturbance (e.g tropical storms)
- Develop valuation of Forest ecosystem services for inclusion in national budgets (Carbon +)
- We would welcome support for REDD+ preparation provided by UN-REDD and similar entities
- Need to access Sustainable Forest Management Financing under GEF 5 and other sources
- Enable greater south- south cooperation for capacity building and tech. transfer for St. Lucia and CARICOM

thank you!
merci!
¡gracias!



Lyndon John
Forestry Department
lynjohn1@yahoo.com

Tel (758)468-5635
Fax(758)450-2287]