



The forestry sector in Suriname regarding TEEB

May ,17th 2012



THE FOREST SECTOR and TIMBER INDUSTRY SECTOR

- APRs. 97 % of the forests is state owned, the rest is private owned.
- Forest cover 14.8 million ha about 90% of the land area
- Temporary maintained forest 57%
- Protected forests 13%
- Production forest 30%



TIMBER CUTTING LICENSES

- 1.2 million ha commercial concessions
 - 85 licenses for timber production issued
- 0.5 million ha Communal Forests for
 - ± 119 tribal communities in the interior
- Incidental cutting license
 - 170.000 ha. Incl 115.000 ha underwater logging (Hydro lake)



ANNUAL TIMBER PRODUCTION

Year	Logs (m ³)
2000	171,000
2001	155,000
2002	145,000
2003	147,000
2004	153,000
2005	170,000
2006	190,000
2007	154,000
2008	178,000
2009	207,000
2010	247,000

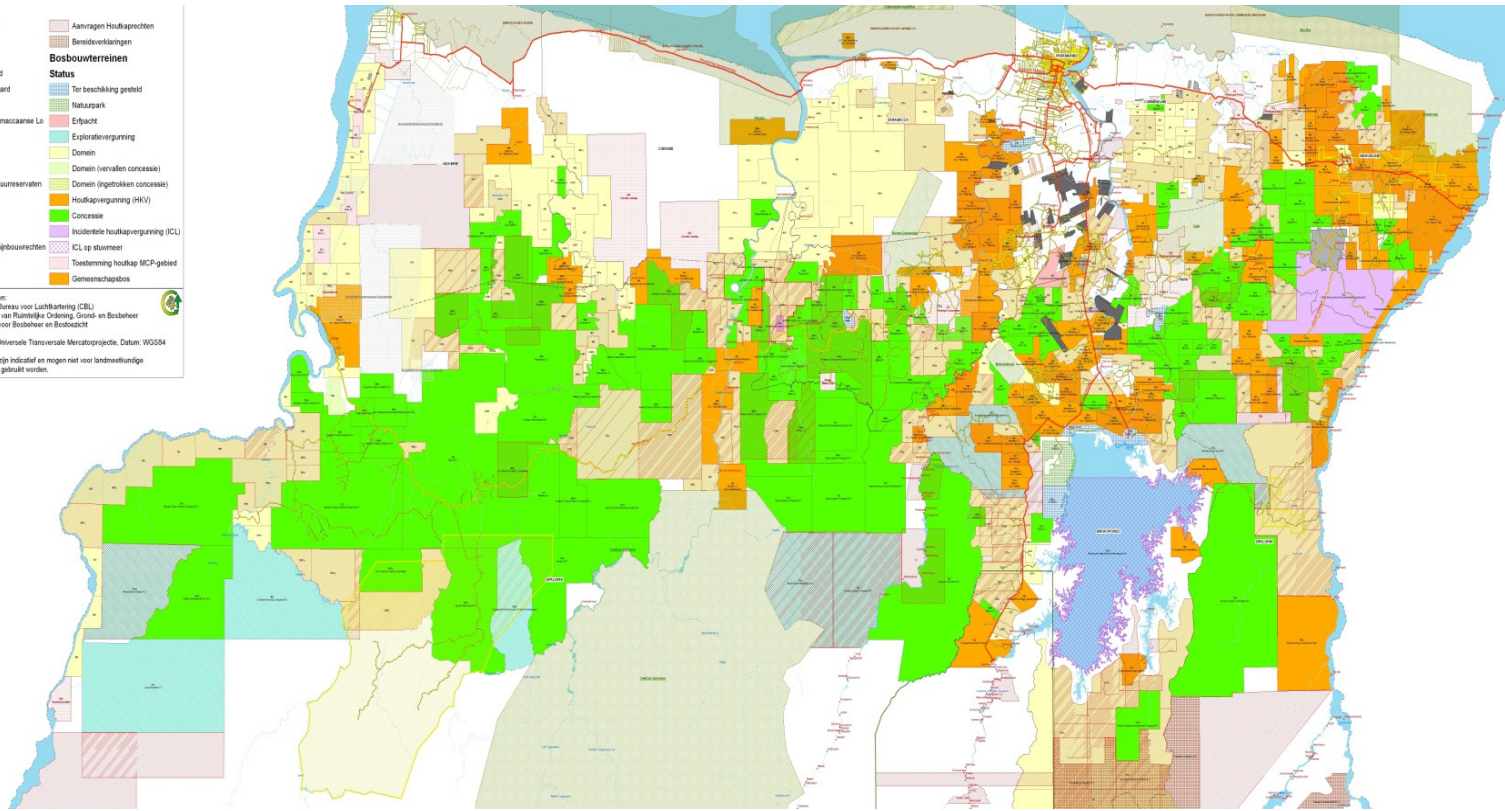
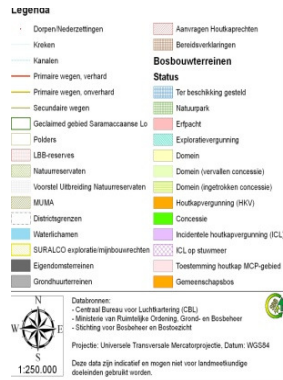


POLICY AND LEGAL FRAMEWORK

- The Forest Management Act of 1992
- The Nature Conservation Act 1954
- National Forest Policy 2003
- Draft environmental law



LOGGING RIGHTS MAP



Sustainable forestry measures

- Reduced Impact Logging System
- Planning of tree selection appropriate for logging
- Max. 25m³/ha timberlogging permitted per block
- Closure of harvested blocks
- Selection of trees \geq 35cm DBH at 1.30 m above the ground



Harvesting measures

Not allowed to be harvested:

- Protected trees
- Seed-bearing and blossoming trees
- Trees within a distance of 10 meters of each other
- Trees within a distance of 20 meters of a creek
- Trees on a slope $>30^\circ$
- Unsustainable creek transition should be avoided
- Rehabilitation of landings



Thank You

