

Maps and Figures

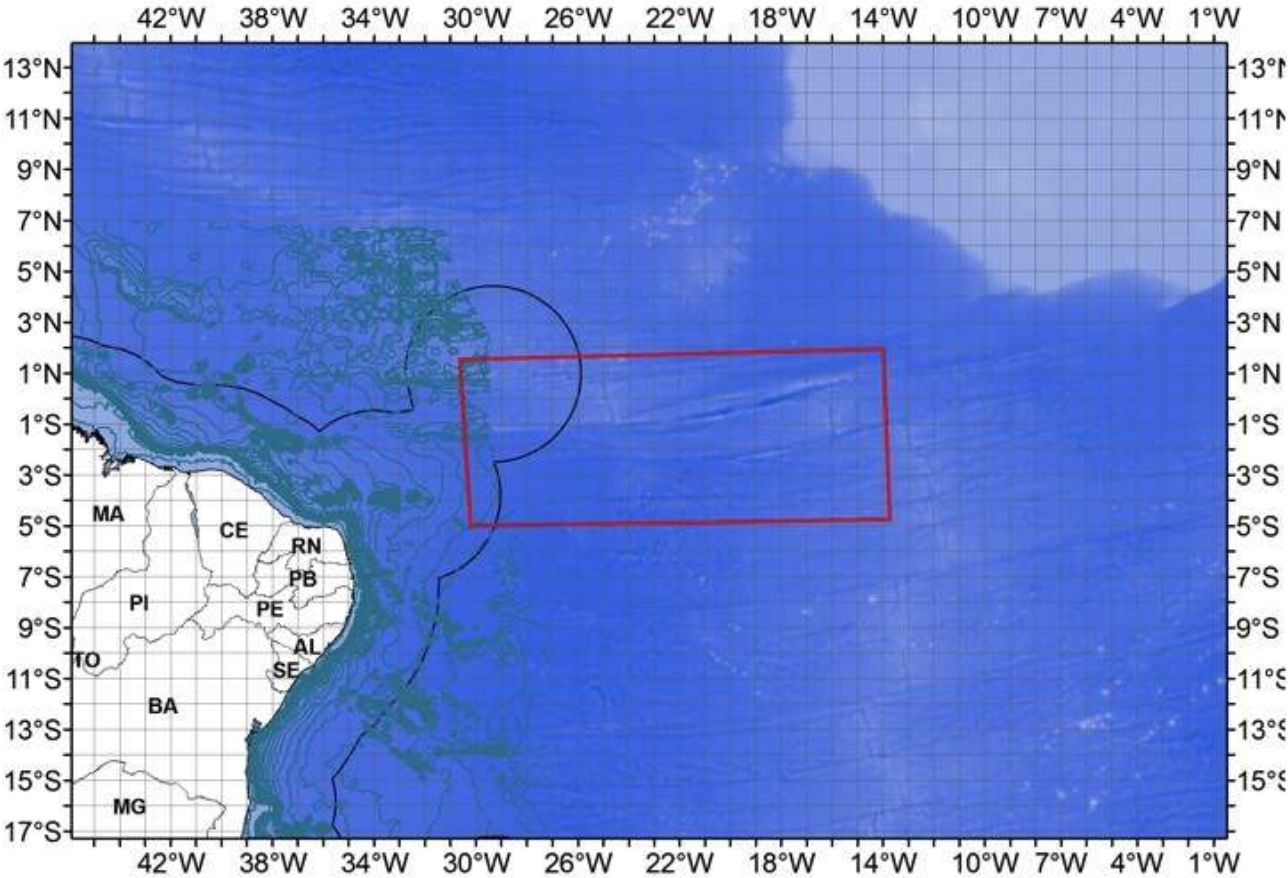


Figure 1. Equatorial Atlantic seafloor. The red line delimits the proposed EBSA.

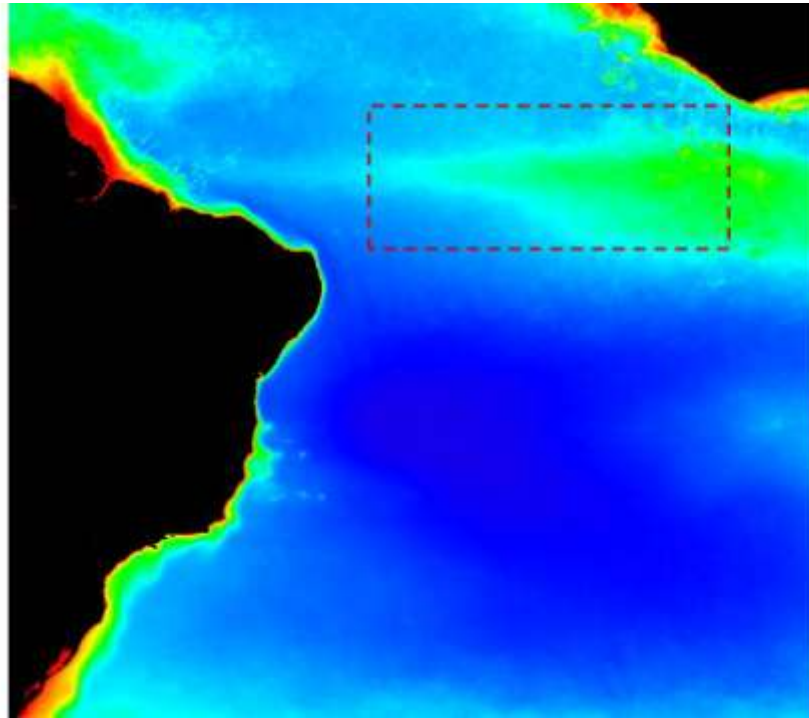


Figure 2. Chlorophyll distribution during 2002 – 2011 period extracted from sensor MODIS, 4 km resolution (<http://oceancolor.gsfc.nasa.gov>).

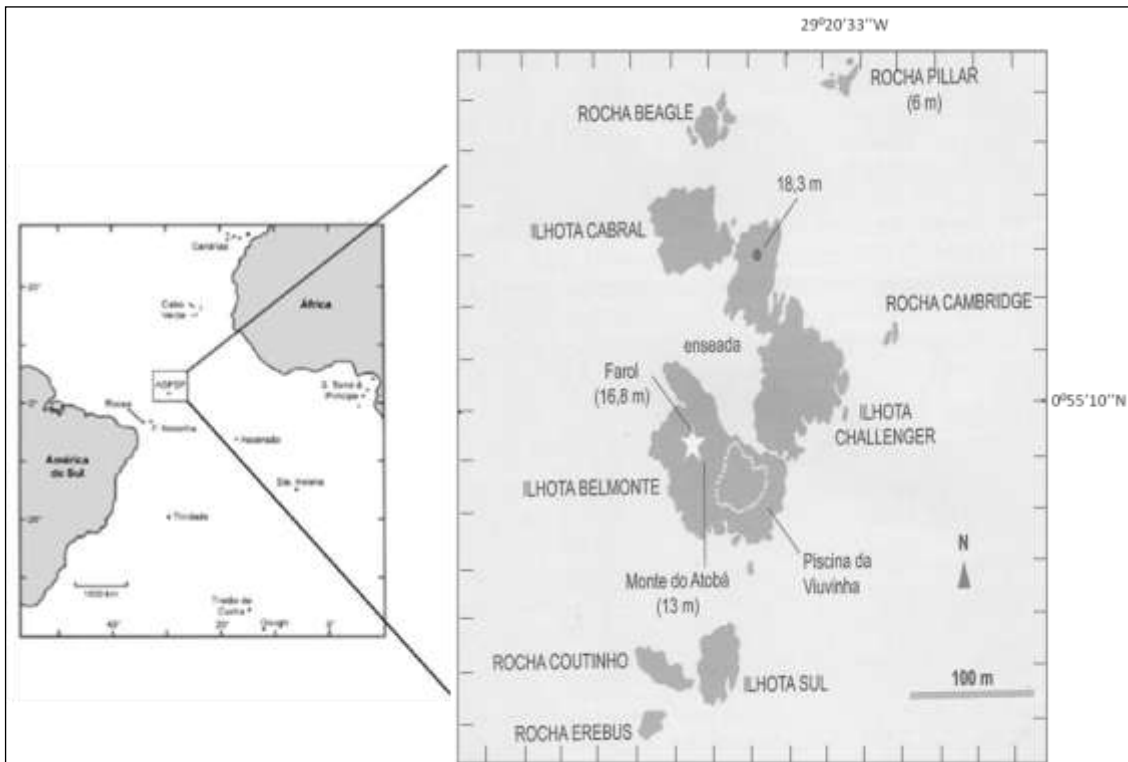


Figure 3. The St. Peter and St. Paul's Archipelago. Reproduced from Vaske et al. (2010).

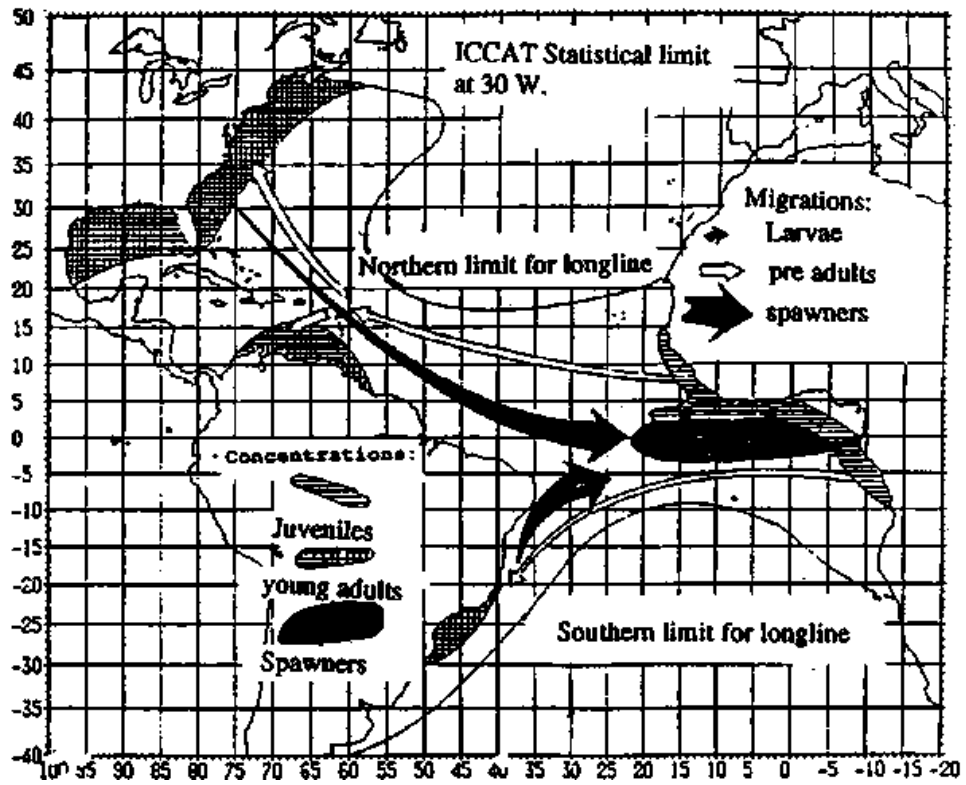


Figure 4. Distribution of different life history phases of the yellowfin tuna (*Tunnus albacares*) in the Atlantic Ocean. Reproduced from Fonteneau and Soubrier (1995).

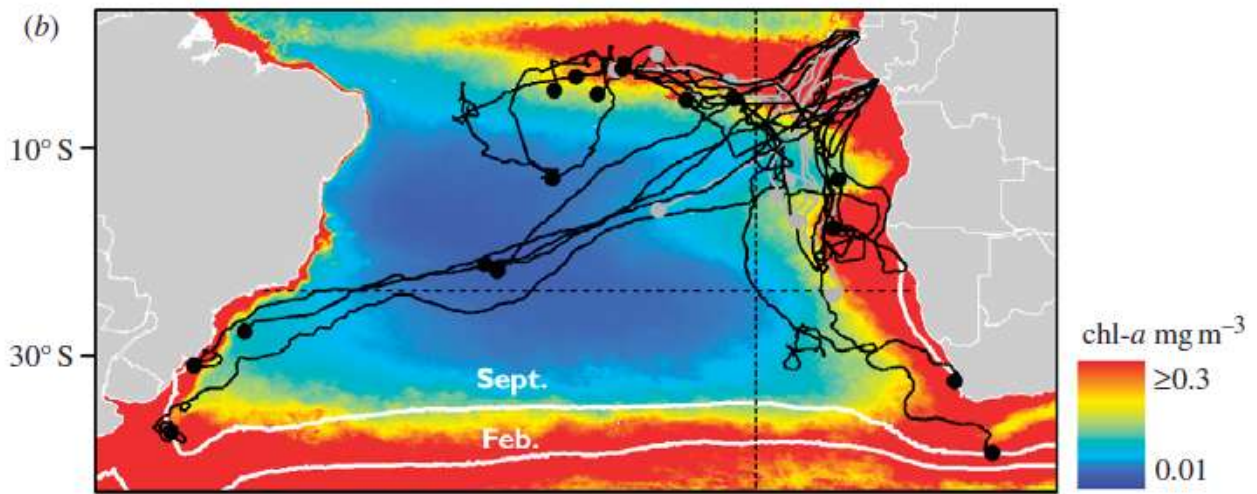


Figure 5. Movements of leatherback turtles with respect to mean annual chlorophyll *a* distribution in the Atlantic Ocean. Reproduced from Witt et al. (2011).

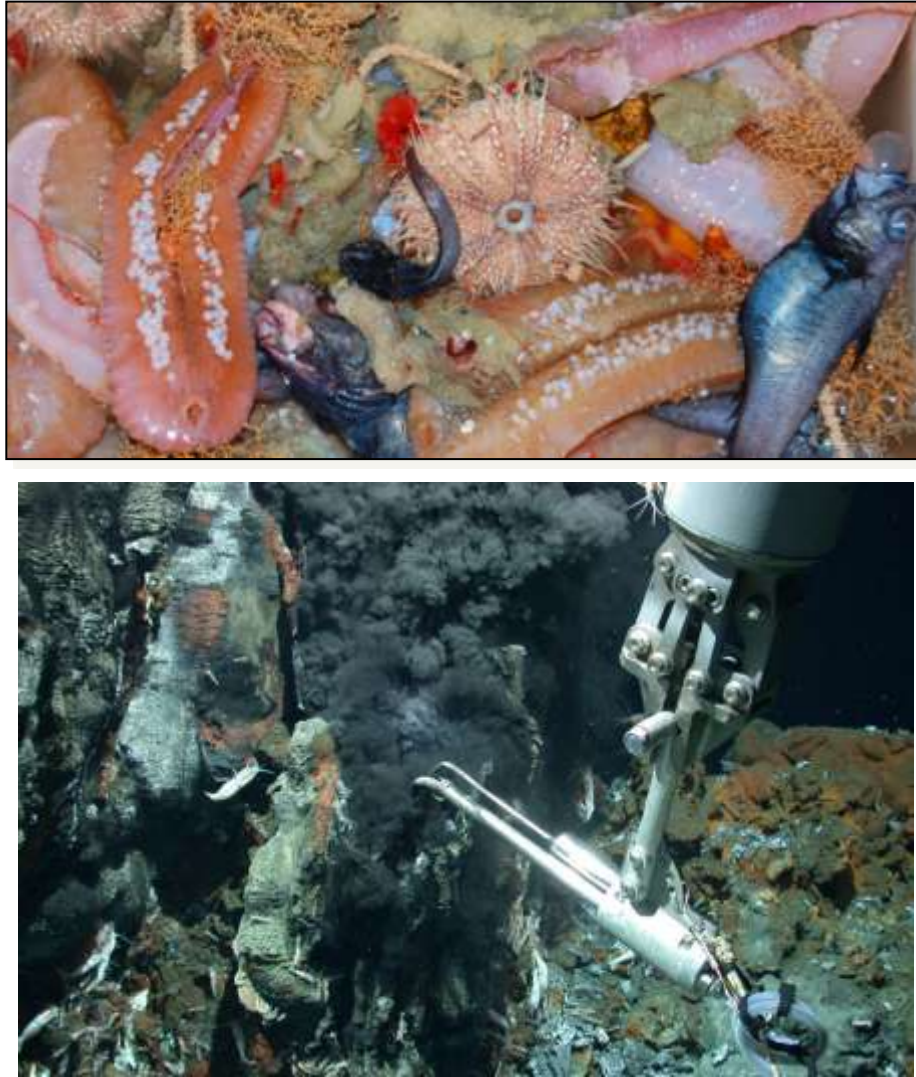


Figure 6. Megabenthos catch obtained on the Romanche Fracture Zone (upper panel) (photograph André Barreto, UNIVALI) and a black smoker from one of the world's hottest hydrothermal vents discovered in the southern Mid-Atlantic Ridge (lower panel) (from <http://www.noc.soton.ac.uk/chess/>, image courtesy of A. Koschinsky, Uni. Bremen)