



European
Commission

EU support to biodiversity conservation in Africa

Bastian Bertzky
Entebbe, Uganda
21 March 2016



Joint Research Centre

the European Commission's
in-house science service

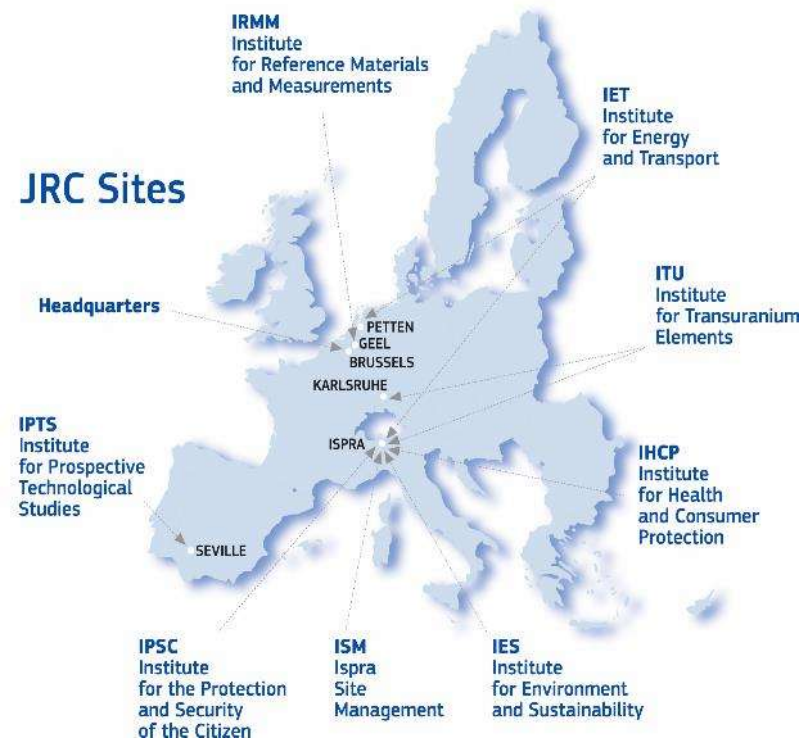


Outline

1. Who is JRC?
2. EU development support for biodiversity conservation
3. What is JRC's contribution?
4. Globally – the Digital Observatory for Protected Areas (DOPA)
 - a. A quick introduction to DOPA*
 - b. DOPA and the CBD*
5. Regional and national support – the BIOPAMA Programme
 - a. Regional Observatories in Africa*
 - b. Regional Reference Information Systems*

Who is JRC?

- European Commission (EC) = Executive Body of the European Union (EU) based in Brussels
- Joint Research Centre (JRC) = **in-house science service** of the EC; provides independent scientific and technical support to EU policy
- JRC established in 1957
- Now 7 institutes in 5 countries with over 3,000 staff (35% short-term)



JRC works on...

Forests

Soil

Carbon

Freshwater

Ecosystem Services

Remote Sensing

Land Degradation

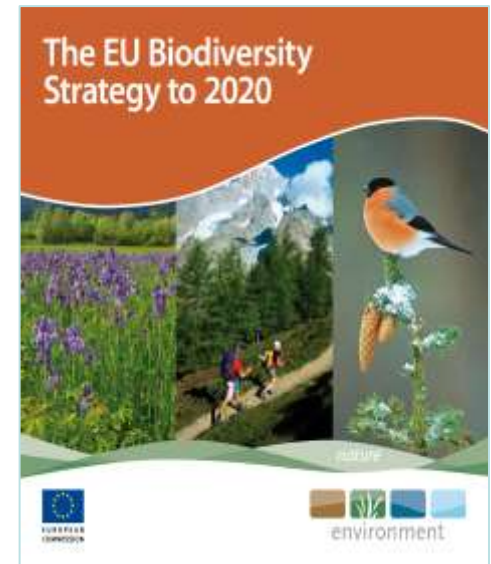
Marine

Invasive Alien Species

Food Security

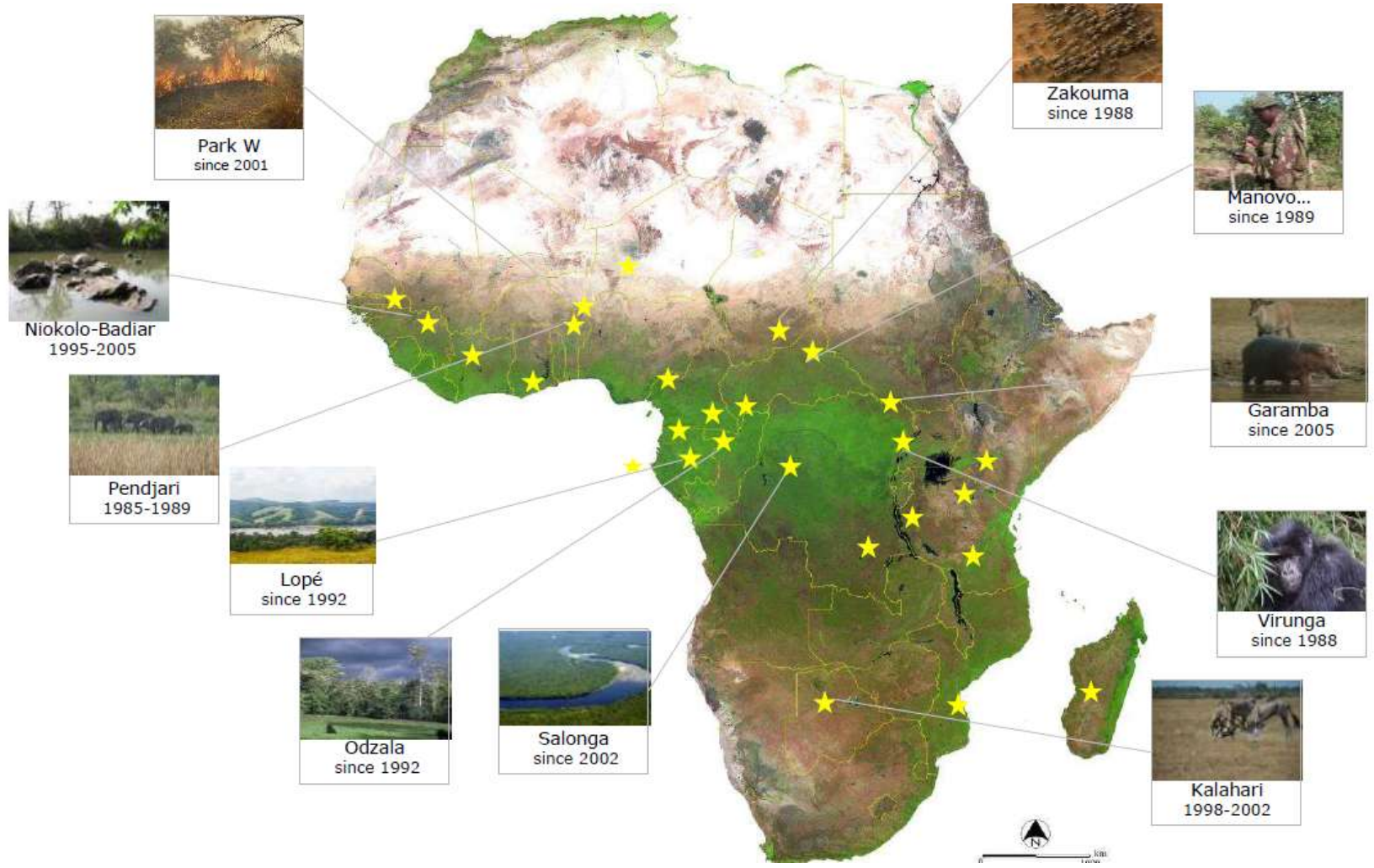
Why do we work on global biodiversity issues?

- Global biodiversity loss affects the EU and EU contributes to global biodiversity loss
- EU Biodiversity Strategy to 2020: Target 6 – “Help avert global biodiversity loss”
- EU and Member States support biodiversity conservation in developing countries



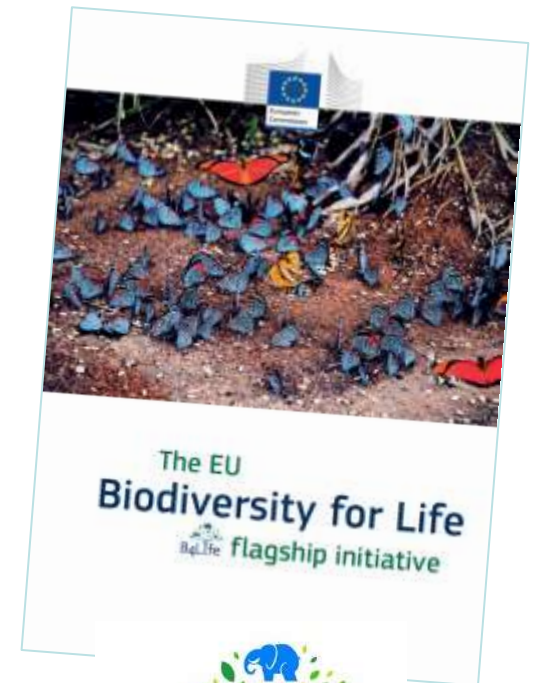
In total €1.6 billion
biodiversity-related funding
from EuropeAid in 2007-2013

€500 million from EU for
African protected areas
since 1985



Biodiversity for Life (B4Life) Initiative

- New EU flagship initiative for 2014-2020 fighting biodiversity loss and poverty
- Integrates biodiversity conservation with socio-economic development
- 3 priority areas: good governance, food security and green economy
- €800 million to €1 billion in total
- Wildlife Crisis Window (c. €450 million)



Africa: Strategies and Action Plans

- EU Strategic Approach to Wildlife Conservation in (Sub-Saharan) Africa
- Identifies key threats and responses for next 10 years (€7.7 billion needed)
- Focus on 85 Key Landscapes for Conservation = over 300 PAs, many TFCAs
- Important for EC aid programming
- Marine strategy for Africa in prep.
- EU Action Plan against Wildlife Trafficking



What is JRC's contribution?

- **Scientific and technical support to:**
 - EC & EuropeAid
 - Partner regions and countries
 - the CBD Secretariat, IPBES, IUCN, UNEP-WCMC and other partners
- **Information systems & observatories**





"We are drowning in information, while starving for wisdom. The world henceforth will be run by synthesizers, people able to put together the right information at the right time, think critically about it, and make important choices wisely."

E. Wilson, 1998, Consilience

The **Digital Observatory for Protected Areas (DOPA)** is a set of web services and interfaces that provides a large variety of end-users including park managers, park agencies, other decision-makers and researchers with means to assess, monitor and possibly forecast the state of and pressure on protected areas at multiple scales. Using reference datasets, DOPA is designed to encourage a cross-disciplinary approach to biodiversity without being exposed to excessive risks coming from mixing data from undocumented sources and/or with undocumented uncertainties.

OBJECTIVES

Provide best available material (data, indicators, models) agreed on by contributing institutions which can serve for establishing baselines for research and reporting.

Provide free web based tools (databases, portals, modeling services) designed to support decision making and capacity building activities for conservation.

Provide an interoperable and, as much as possible, open source framework to allow institutions to develop their own means to assess, monitor and forecast the state of and pressure on protected areas.

JRC Support – global level



- **DOPA: Global reference information system** developed by JRC in collaboration with EC & EuropeAid and other partners
- Provides **decision makers** and other users with easy access to information at PA, country and ecoregion level
- Broad range of **indicators** on biodiversity values and threats/pressures to facilitate comparison and prioritization
- Supports PA **planning, monitoring, reporting & funding allocation**
- DOPA is **free and open access** but respects data restrictions

What is the difference between WDPA and DOPA?

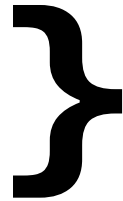
Source Data

Analysis

Indicator

WDPA

WWF Ecoregions



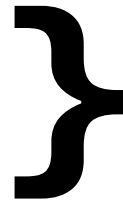
GIS



% ecoregion
protected

WDPA

IUCN Red List



GIS

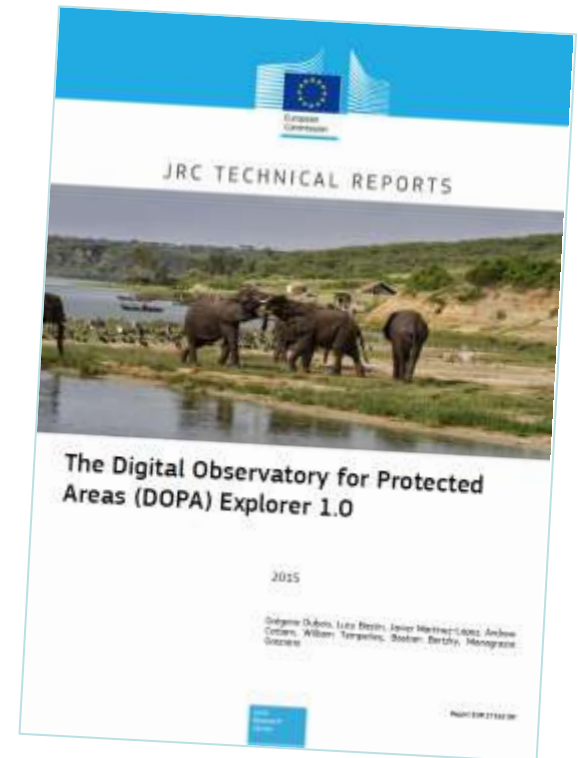


% threatened
endemics
protected

DOPA

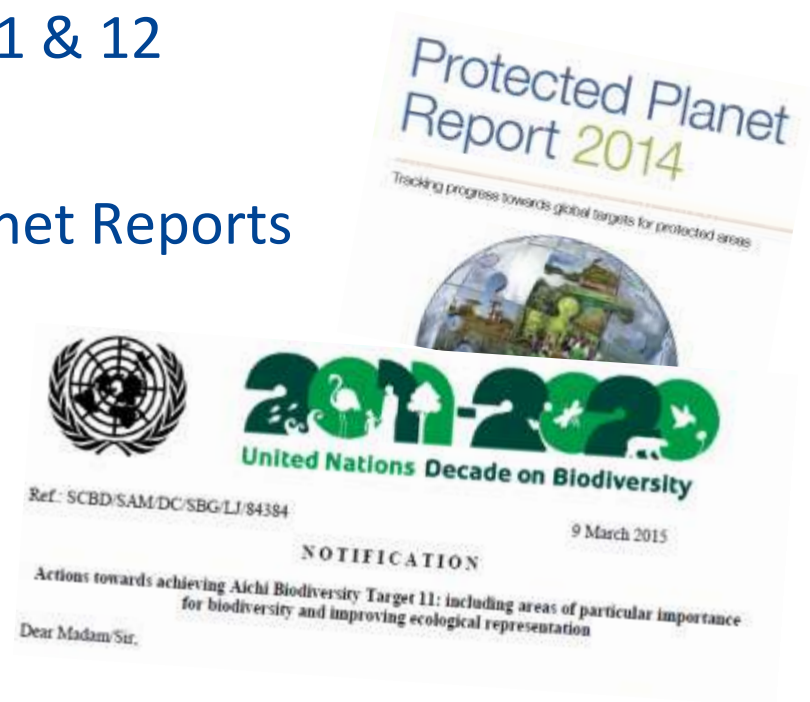
DOPA Modules

- **DOPA Explorer**: View, query and compare data at national, ecoregion and PA level
- **DOPA Reporter** (under development): Generate customizable reports at regional, national, ecoregion and PA level
- **DOPA eConservation**: Mapping conservation projects – “Who is doing what where?”



DOPA and the CBD

- DOPA recognized as **support tool for NBSAP and PoWPA** action planning and implementation (Decision XI/24 & Notification)
- Currently a focus on Aichi Targets 11 & 12
- DOPA supports:
 - UNEP-WCMC/IUCN Protected Planet Reports
 - **CBD Country dossiers**
 - **CBD Regional workshops**



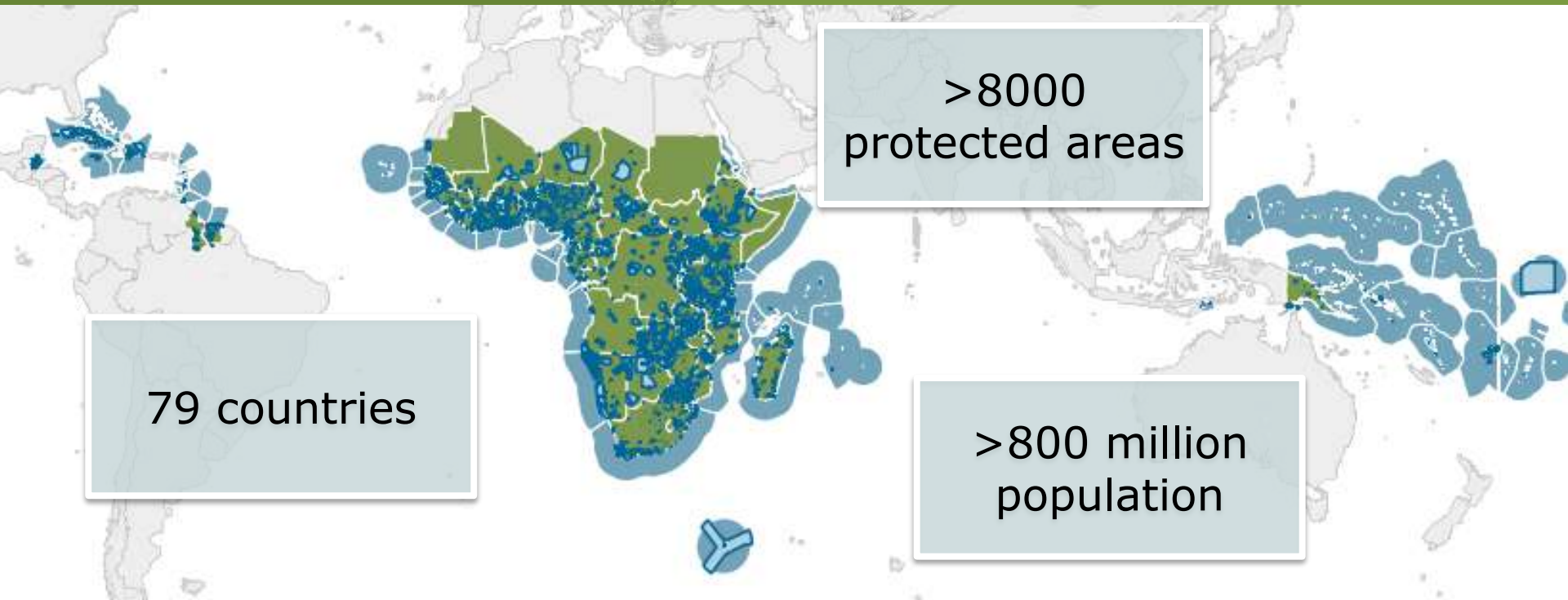
JRC Support – regional and national level

- Example: Biodiversity and Protected Area Management Programme (BIOPAMA)



- Initiative of the Secretariat of the African, Caribbean and Pacific (ACP) Group of States
- Funded by the European Development Fund
- Implemented by JRC, IUCN & GIZ with partners in regions
- Phase 1: 2011-2016 – €20 million
- Phase 2: 2017-2022 – €60 million (incl. Action Fund)?





1. Protected Areas Component

(JRC & IUCN)

2. Access and Benefit Sharing (ABS) Component

(GIZ)

Result 1

Develop, implement and deploy
Regional Information Systems
on PAs & biodiversity

(JRC)

Result 2

- a) Establish **Regional Observatories**
for PAs & biodiversity
- b) Develop and implement
capacity building

(IUCN)

Region	Regional Observatory Host(s)
West and Central Africa	Observatory for Central African Forests (OFAC), DRC & Cameroon; maybe West African Economic and Monetary Union (UEMOA), Burkina Faso
Eastern and Southern Africa	East African Community (EAC), Tanzania; Southern African Development Community (SADC), Botswana; Intergovernmental Authority on Development (IGAD), Djibouti
Caribbean	University of the West Indies (UWI), Barbados
Pacific	Secretariat for the Pacific Regional Environment Programme (SPREP), Samoa

How do the Regional RIS relate to DOPA and WDPA?

WDPA=
database



GIS analysis with other datasets

DOPA=
global info
system

Uses global datasets to deliver indicators:

% ecoregion protected?
% threatened endemics protected?

RRIS=
regional info
system

Global DOPA indicators plus:

Regional & national datasets, indicators, documents, tools...

Regional ownership & branding!



EAC Partner States



[About the EAC RRIS](#)

ECOLOGICAL CHARACTERISTICS OF PROTECTED AREAS

What are the ecological characteristics of a protected area - what species are present, what habitat types can be found, and what ecosystem services does it provide? How vulnerable are the species, how unique are the habitats and how might they be affected by change?

Language English

PROTECTED AREAS AND LIVELIHOODS

People interact with protected areas in many ways. People establish, govern and manage protected areas, and receive multiple benefits from protected areas. Protected areas help conserve biodiversity, provide important ecosystem services, and support human livelihoods and well-being. But people also exert multiple pressures on protected areas that can affect the conservation of biodiversity and the provision of ecosystem services.

Language English

PROTECTED AREA MANAGEMENT AND GOVERNANCE

Good governance and management are key determinants of protected area success. The BIOPAMA RIS seeks to provide information on the legal frameworks, governance and management arrangements for protected areas in the ACP countries, and the effectiveness and efficiency of these practices with regard to conservation outcomes.

Language English

English

Search



Login/Register



Transfrontier Conservation Areas

SOUTHERN AFRICAN DEVELOPMENT COMMUNITY

ABOUT TFCAs

PROJECTS

TOURISM

MEDIA

RESOURCES & LINKS

CONTACT US



TFCA NETWORK LOGIN

Log in

NEWSLETTER

Stay informed on our latest news!

E-mail

Subscribe

BIOPAMA data catalogue


BIOPAMA Layers Maps Documents People Groups Help [Sign in](#)

A data repository for biodiversity and protected areas

The BIOPAMA project aims to build a solid information base for decision making on protected areas in the Africa, Caribbean, Pacific (ACP) region. This repository, based on GeoNode, is part of the BIOPAMA Reference Information System. Here you can discover and use maps, reports, data and other information sources, and upload your own to share with others. The themes of data you can find here cover a broad range of natural resource management and related topics.

The core development is done by the [Joint Research Centre](#) of the European Commission, based in Italy. Our project partners IUCN are working across the Africa, Caribbean, Pacific (ACP) region, and their programme officers and technical officers are working with regional institutions to set up regional observatories.


The BIOPAMA project began in July 2011 and will run until 2016. It is closely linked to the development of the Digital Observatory of Protected Areas (DOPA), which provides harmonised indicators and data on protected areas globally. JRC and IUCN are now working with our institutional partners to ensure the long-term sustainability of the Observatories and the Reference Information System. You can find out more about BIOPAMA at the main project page www.biopama.org.



94 Layers

Click to search for geospatial data published by other users, organizations and public sources. Download data in standard formats.


[Explore Layers >](#)



18 Maps

Data is available for browsing, aggregating and styling to generate maps which can be shared publicly or restricted to specific users only.

[Create maps >](#)



44 Users

GeoNode allows registered users to easily upload geospatial data in several formats including Shapefile, GeoTiff and various kind of Documents.

[Share data >](#)

BIOPAMA map module

The screenshot displays the BIOPAMA map module interface. At the top left is the BIOPAMA logo. To its right are navigation links: Layers, Maps, Documents, People, Groups, and Help. A search bar with the placeholder text "Type your search here ..." and a magnifying glass icon is located to the right of these links. Further right is a "Sign in" button. Below the navigation bar is a toolbar with icons for Map, Print, Identify, Query, Measure, and Edit. The main map area shows a map of Africa with several overlays: green areas representing Oil and Gas Pipeline in East Africa, Oil and Gas Concessions, and Mineral Licenses for the EAC; red areas representing All Protected Areas of Africa, Caribbean, Pacific (ACP) and Key Landscapes for Conservation (KLCs) in Africa. The map also shows major cities, countries, and geographical features like the Gulf of Aden and Mozambique Channel. A scale bar at the bottom right indicates 200 km and 200 mi, with a scale of 1 : 69885143. The interface includes a "Layers" panel on the left with sections for "Overlays" and "Base Maps".

Layers

- Overlays**
 - Oil and Gas Pipeline in East Africa
 - Oil and Gas Concessions
 - Mineral Licenses for the EAC
 - All Protected Areas of Africa, Caribbean, Pacific (ACP)
 - Key Landscapes for Conservation (KLCs) in Africa
- Base Maps**
 - Bing Aerial With Labels
 - MapQuest Imagery
 - MapQuest OpenStreetMap
 - OpenStreetMap
 - No background

Take-home messages

- Substantial financial and technical support from EU / EC
 - EC Joint Research Centre (JRC) here to help
 - Answer questions on DOPA and BIOPAMA
 - Better understand user needs
 - Continued support to CBD and countries
- Also working closely with IUCN and UNEP-WCMC

Thanks!

(Handouts & USB Keys)



<http://dopa.jrc.ec.europa.eu/>

<http://dopa.jrc.ec.europa.eu/explorer/>

<http://econservation.jrc.ec.europa.eu/>



<http://www.biopama.org/>

<http://rris.biopama.org/>