

Implimenting AICHI biodiversity target 11 in South African Marine Environment

POWPA Workshop--Entebbe
22 March 2016



By Xola MKEFE: Director: Coastal Biodiversity and MPAs
Email: xmkefe@environment.gov.za



environmental affairs

Department:
Environmental Affairs
REPUBLIC OF SOUTH AFRICA





REPUBLIC OF SOUTH AFRICA

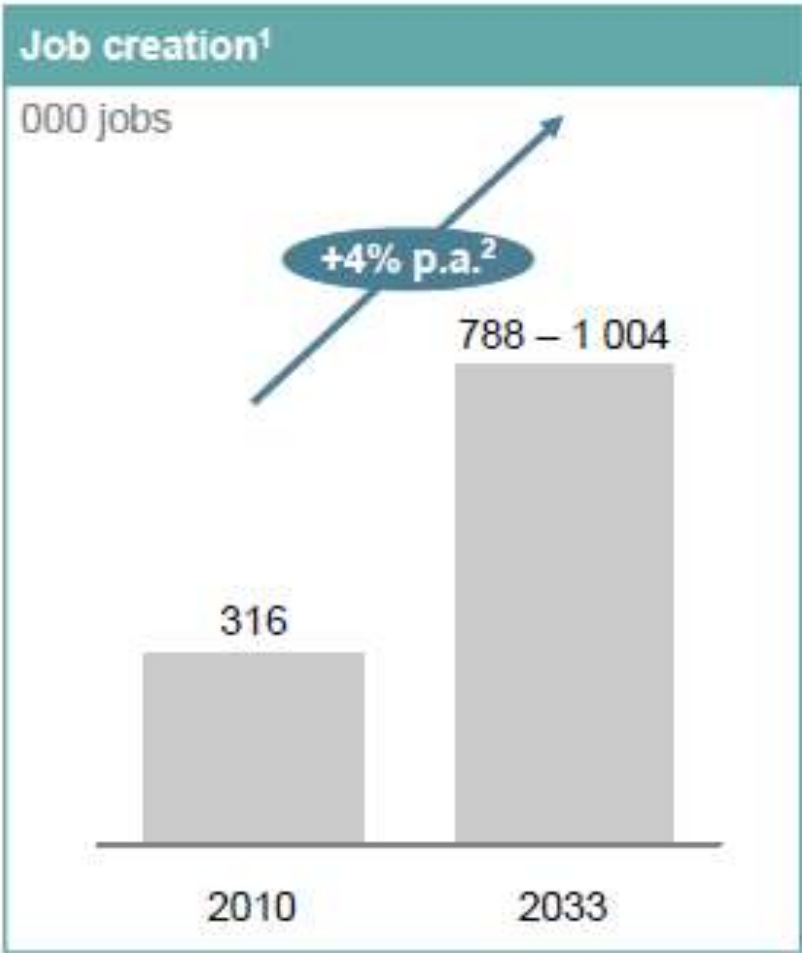
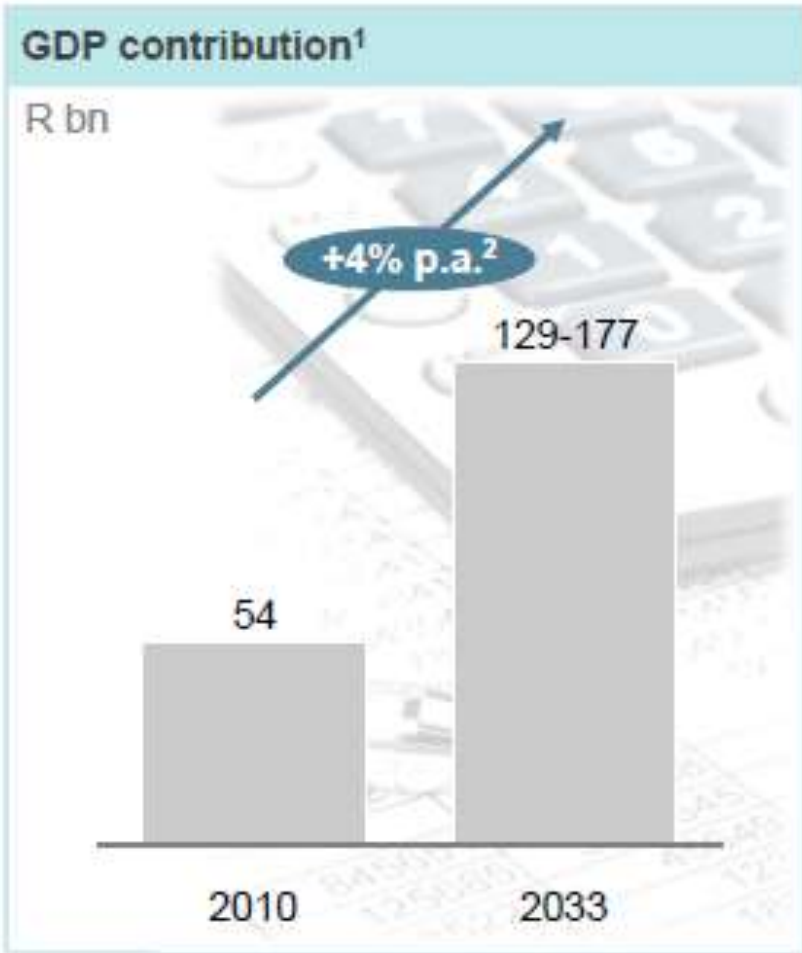


Operation Phakisa: Unlocking the Economic Potential of South Africa's Oceans

22 Proposed Phakisa MPA Network

POWPA, Entebbe, 22/03/2016

South Africa's ocean economic potential ranges between R129 and R177 bn by 2033, with between 800 000 to 1 million jobs created



Four growth areas were selected to be discussed in the Operation Phakisa Labs

1



- Marine transport and manufacturing

2



- Offshore oil and gas exploration

3



- Aquaculture

4



- Marine protection services and governance

Phakisa Proposed MPA Network Initiative 8 in Ocean Protection focus area

Integrated Ocean Governance & Protection

Integrated Framework & Governance



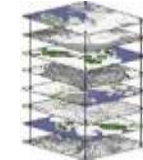
- 1 Ministerial Committee & Secretariat to Govern Activities
- 2 Enhancement of Legislation into the ICOM Act or Oceans Act
- 3 Review of ocean related legislation
- 4 Accelerated Capacity Building Intervention in Ocean Governance

Ocean Protection



- 5 Enhanced and Coordinated Enforcement Programme ★
- 6 Extending O&C Remote Sensing Surveillance & Information System ★
- 7 National Ocean and Coastal Water Quality Monitoring Programme
- 8 Creation of a MPA Representative Network
- 9 MPA Research, Monitoring & Capacity Building Programme ★

Marine Spatial Planning



- 10 Marine Spatial Planning Process ★

- i. O&C – Oceans & Coasts
- ii. ICOM – Integrated Coastal & Oceans Management
- iii. MPA – Marine Protected Area



Related initiatives

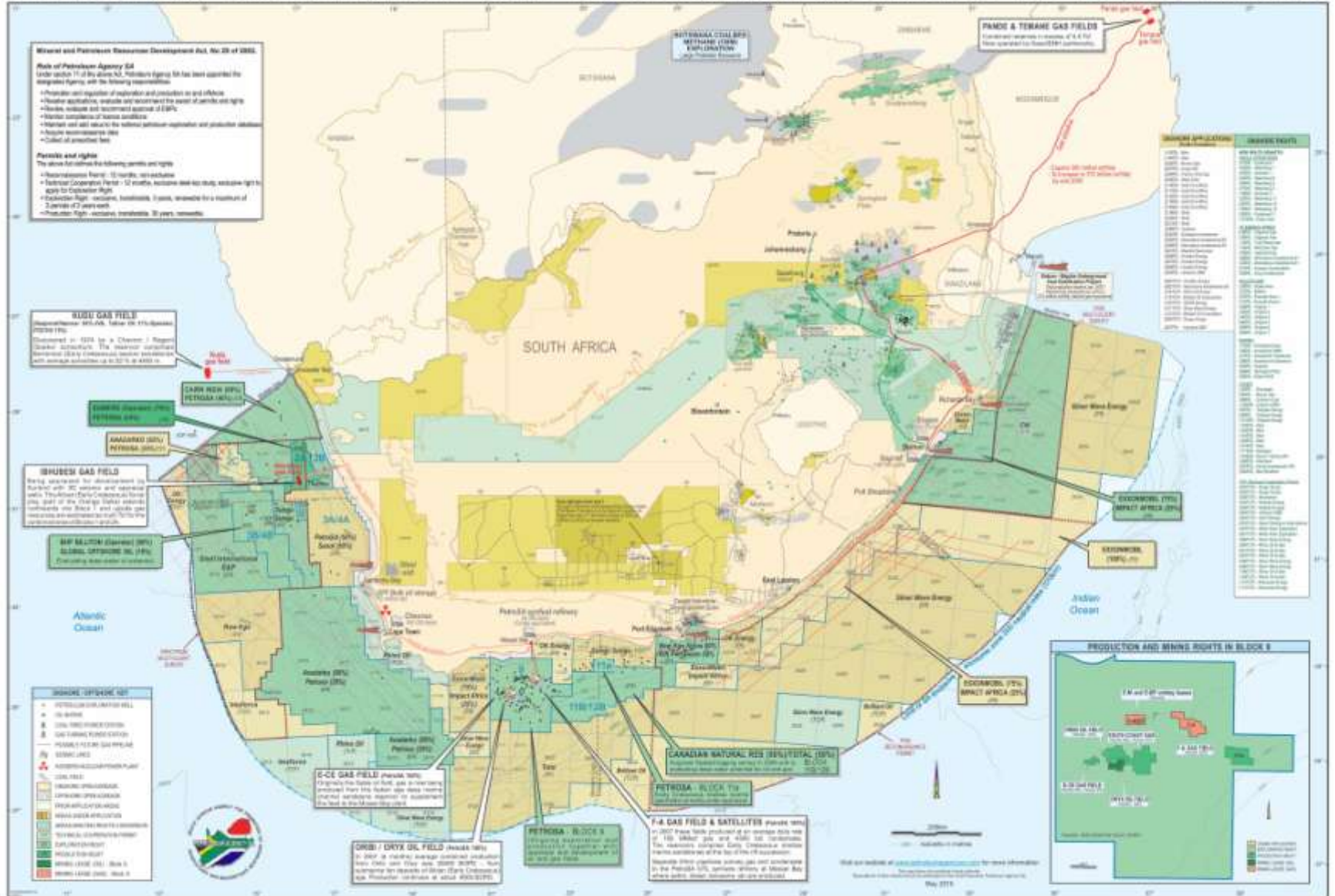


Protection of ocean environment

0.4%

2014 Operation Phakisa

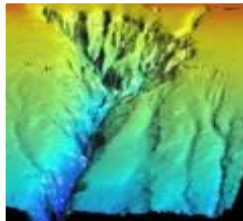
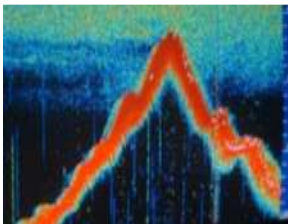
PETROLEUM EXPLORATION AND PRODUCTION ACTIVITIES IN SOUTH AFRICA



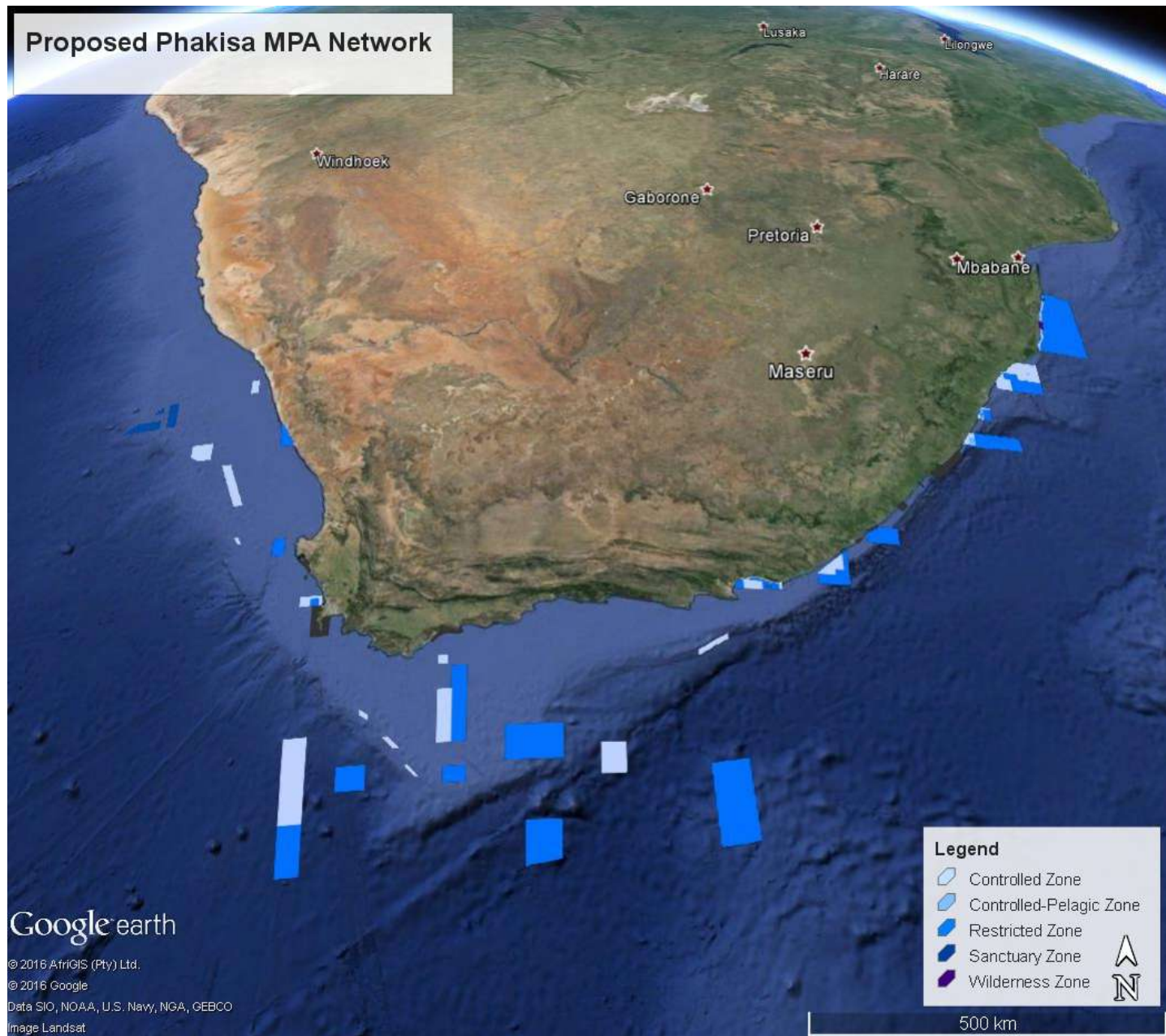


Proposed areas, key features for protection and anticipated gains

- Advance **habitat representation from 60% to 94%**.
- Includes **46 of the 54 habitat types that currently have no protection**
- This includes 10 of the 13 **critically endangered** habitats
- Focus on protecting the last remaining **good condition** areas of **threatened ecosystem**
- 22 proposed new MPAs (3 of these expand existing MPAs)
- Range in size from 200 km² to 15 000 km²
- Total area of 70 000 km² in total new area for protection.
(Current MPA network -4 500 km²)



Proposed Phakisa MPA Network



Google earth

© 2016 AfrGIS (Pty) Ltd.


© 2016 Google

Data SIO, NOAA, U.S. Navy, NGA, GEBCO

Image Landsat

Legend

- Controlled Zone
- Controlled-Pelagic Zone
- Restricted Zone
- Sanctuary Zone
- Wilderness Zone



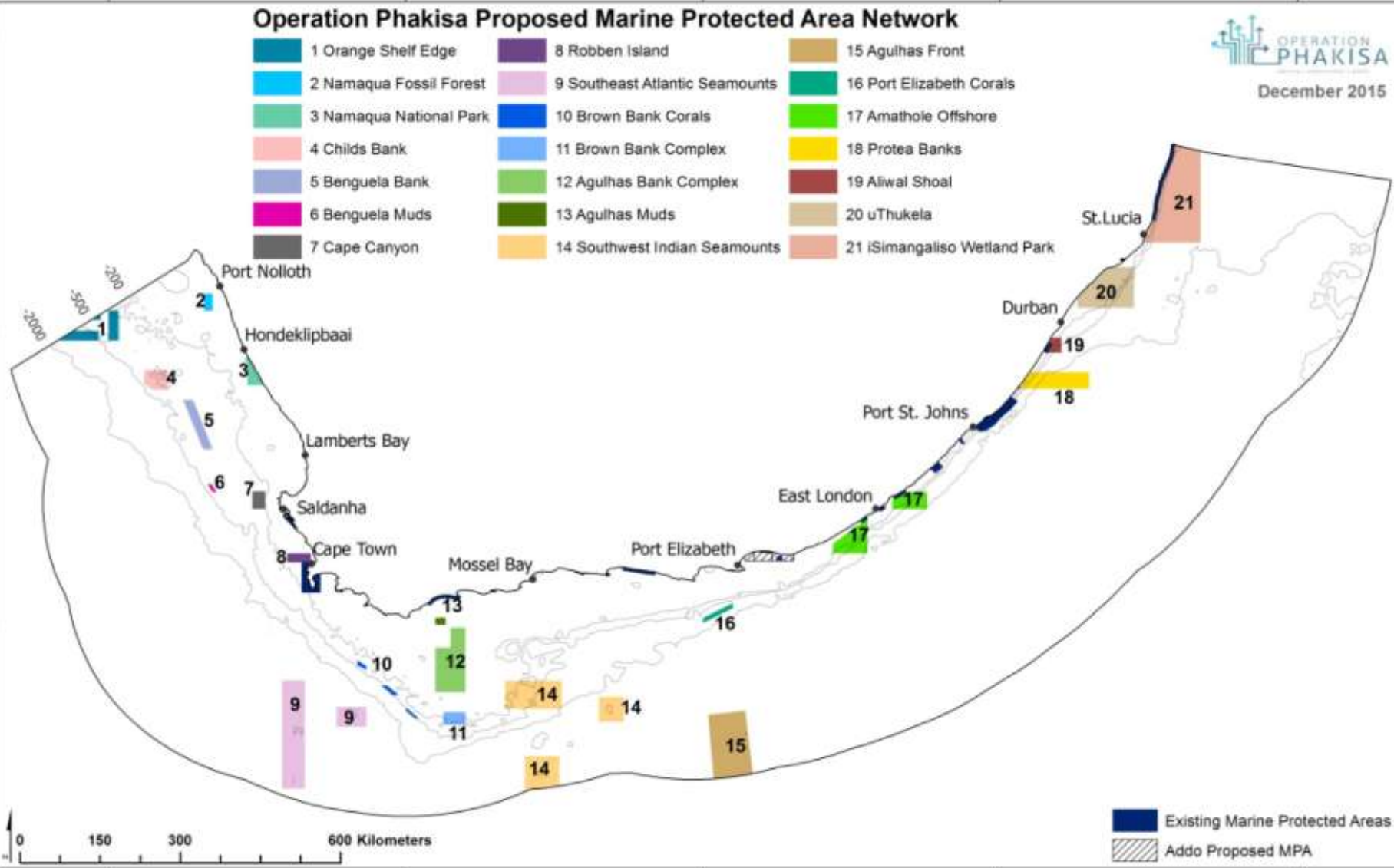
500 km

Operation Phakisa Proposed Marine Protected Area Network



December 2015

- | | | |
|-------------------------|--------------------------------|------------------------------|
| 1 Orange Shelf Edge | 8 Robben Island | 15 Agulhas Front |
| 2 Namaqua Fossil Forest | 9 Southeast Atlantic Seamounts | 16 Port Elizabeth Corals |
| 3 Namaqua National Park | 10 Brown Bank Corals | 17 Amathole Offshore |
| 4 Childs Bank | 11 Brown Bank Complex | 18 Protea Banks |
| 5 Benguela Bank | 12 Agulhas Bank Complex | 19 Aliwal Shoal |
| 6 Benguela Muds | 13 Agulhas Muds | 20 uThukela |
| 7 Cape Canyon | 14 Southwest Indian Seamounts | 21 iSimangaliso Wetland Park |



Existing Marine Protected Areas
 Addo Proposed MPA

2006

Background research



OMPA Process



2011

Relationship building & 1:1 Stakeholder engagement

Stakeholder engagement- multi sectoral

Workshop

Agreed objectives & approach

Open day

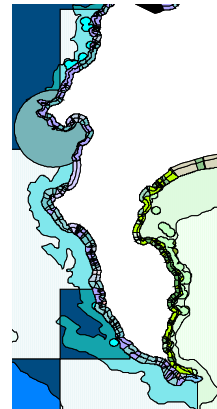
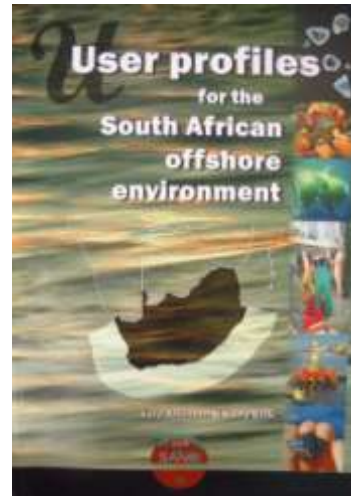
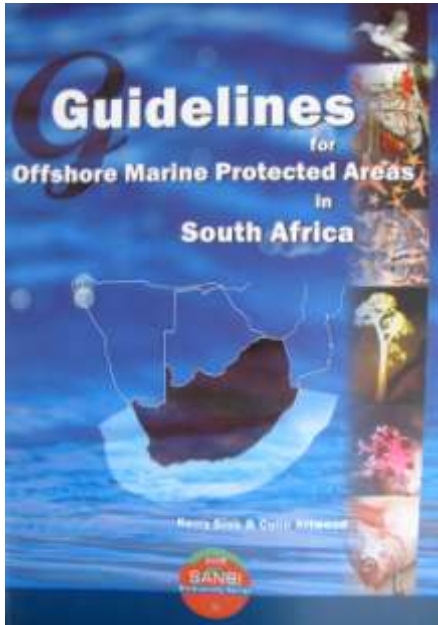
Agreed maps & targets

POWPA Workshop
Cape Town (2012)

Systematic Planning, Human Dimensions, identified concerns

Data collation,
Research & Mapping

Description of EBSAs (16)



Regional Plans

MPAForum

Draft

Focus areas

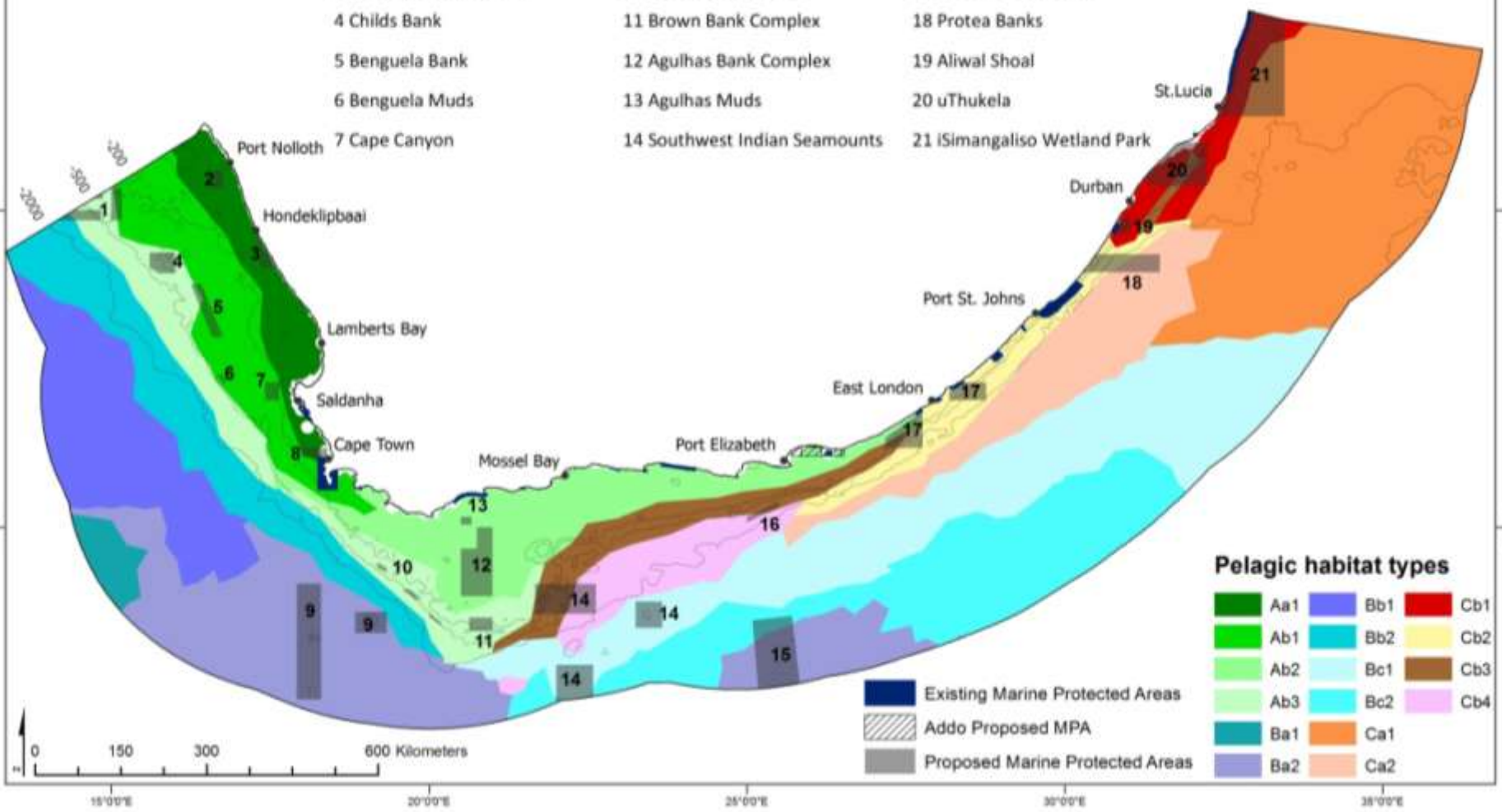


Phakisa Proposed Marine Protected Area Network

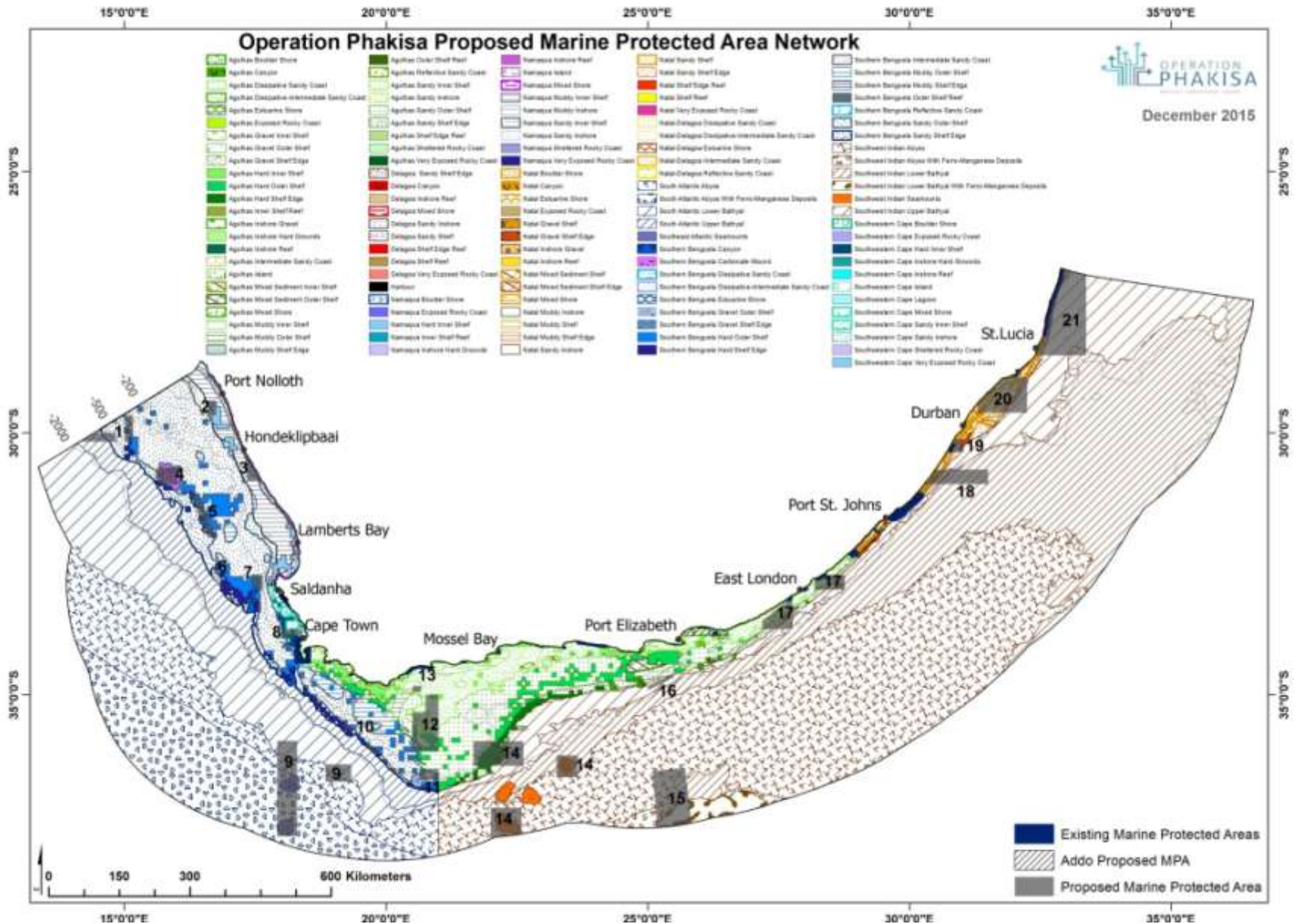


March 2016

- | | | |
|-------------------------|--------------------------------|------------------------------|
| 1 Orange Shelf Edge | 8 Robben Island | 15 Agulhas Front |
| 2 Namaqua Fossil Forest | 9 Southeast Atlantic Seamounts | 16 Port Elizabeth Corals |
| 3 Namaqua National Park | 10 Brown Bank Corals | 17 Amathole Offshore |
| 4 Childs Bank | 11 Brown Bank Complex | 18 Protea Banks |
| 5 Benguela Bank | 12 Agulhas Bank Complex | 19 Aliwal Shoal |
| 6 Benguela Muds | 13 Agulhas Muds | 20 uThukela |
| 7 Cape Canyon | 14 Southwest Indian Seamounts | 21 iSimangaliso Wetland Park |

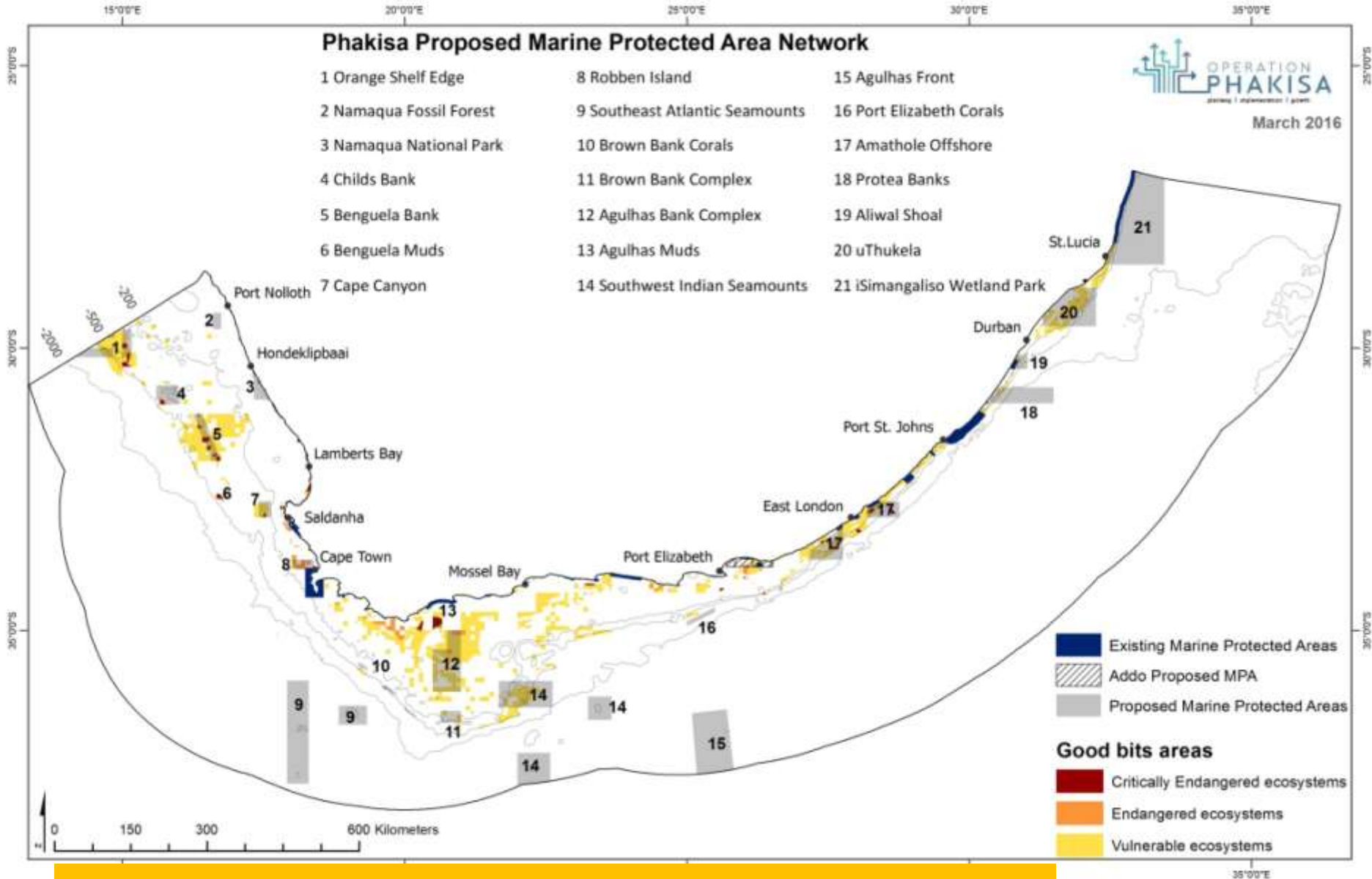


14 of 16 open ocean habitat types included



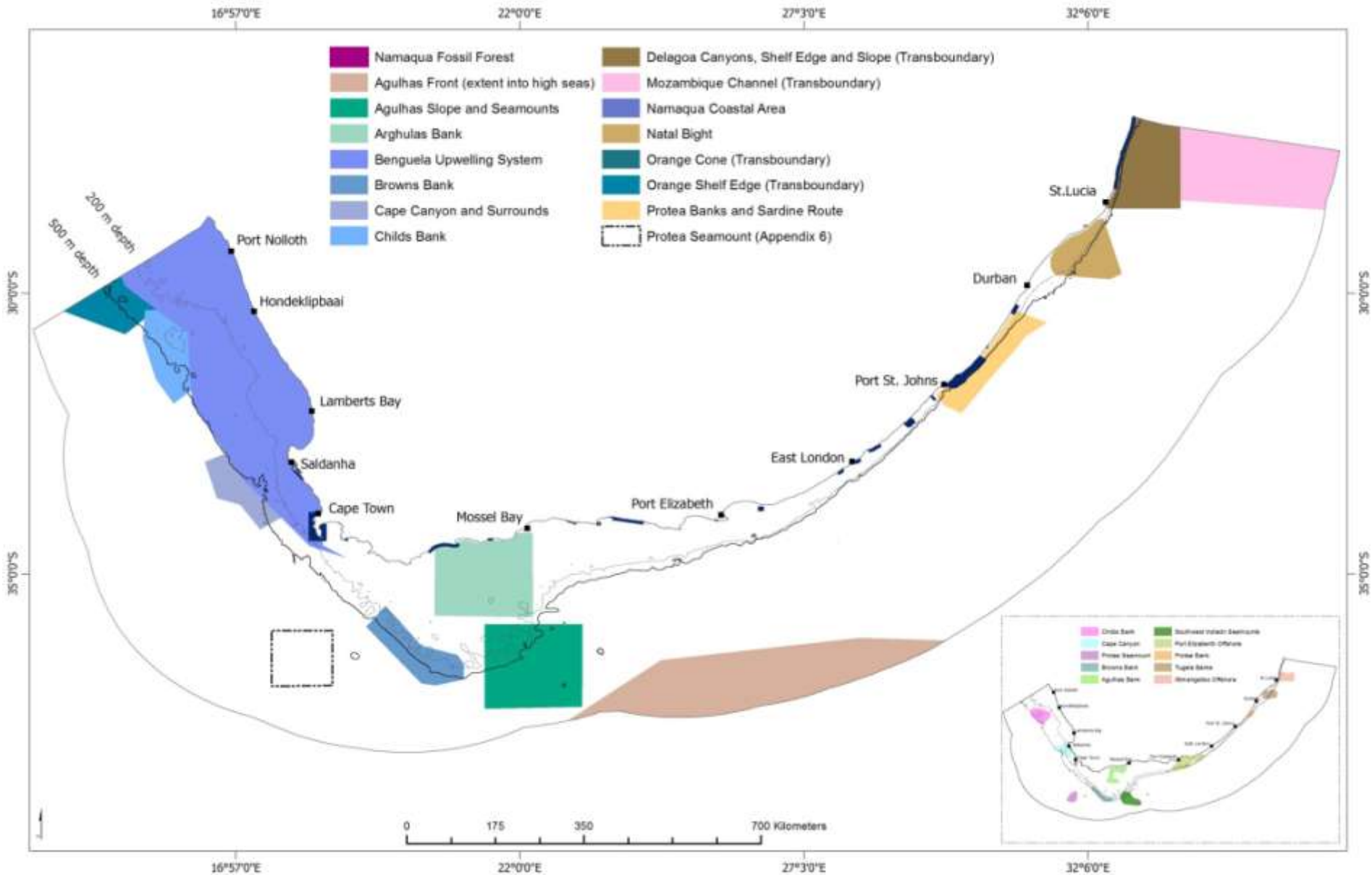
Advances seabed habitat representation

Proposed network takes **good condition** areas of threatened ecosystems into account



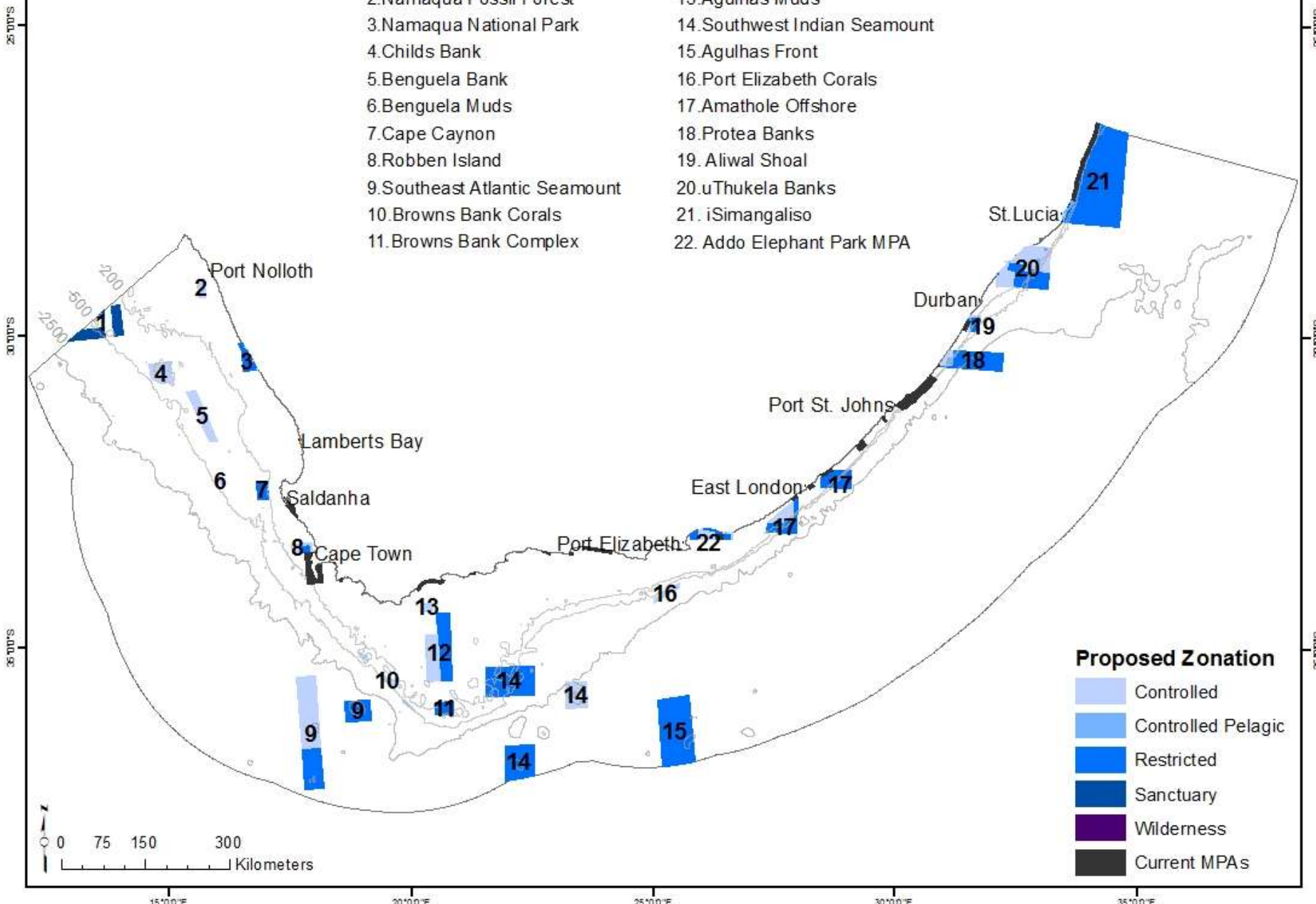
First protection for 10 of 13 Critically Endangered Ecosystems

Ecologically and Biologically Significant Areas



Phakisa Proposed MPA Network

- | | |
|--------------------------------|-------------------------------|
| 1. Orange Shelf Edge | 12. Agulhas Bank Complex |
| 2. Namaqua Fossil Forest | 13. Agulhas Muds |
| 3. Namaqua National Park | 14. Southwest Indian Seamount |
| 4. Childs Bank | 15. Agulhas Front |
| 5. Benguela Bank | 16. Port Elizabeth Corals |
| 6. Benguela Muds | 17. Amathole Offshore |
| 7. Cape Caynon | 18. Protea Banks |
| 8. Robben Island | 19. Aliwal Shoal |
| 9. Southeast Atlantic Seamount | 20. uThukela Banks |
| 10. Browns Bank Corals | 21. iSimangaliso |
| 11. Browns Bank Complex | 22. Addo Elephant Park MPA |



Proposed Zonation

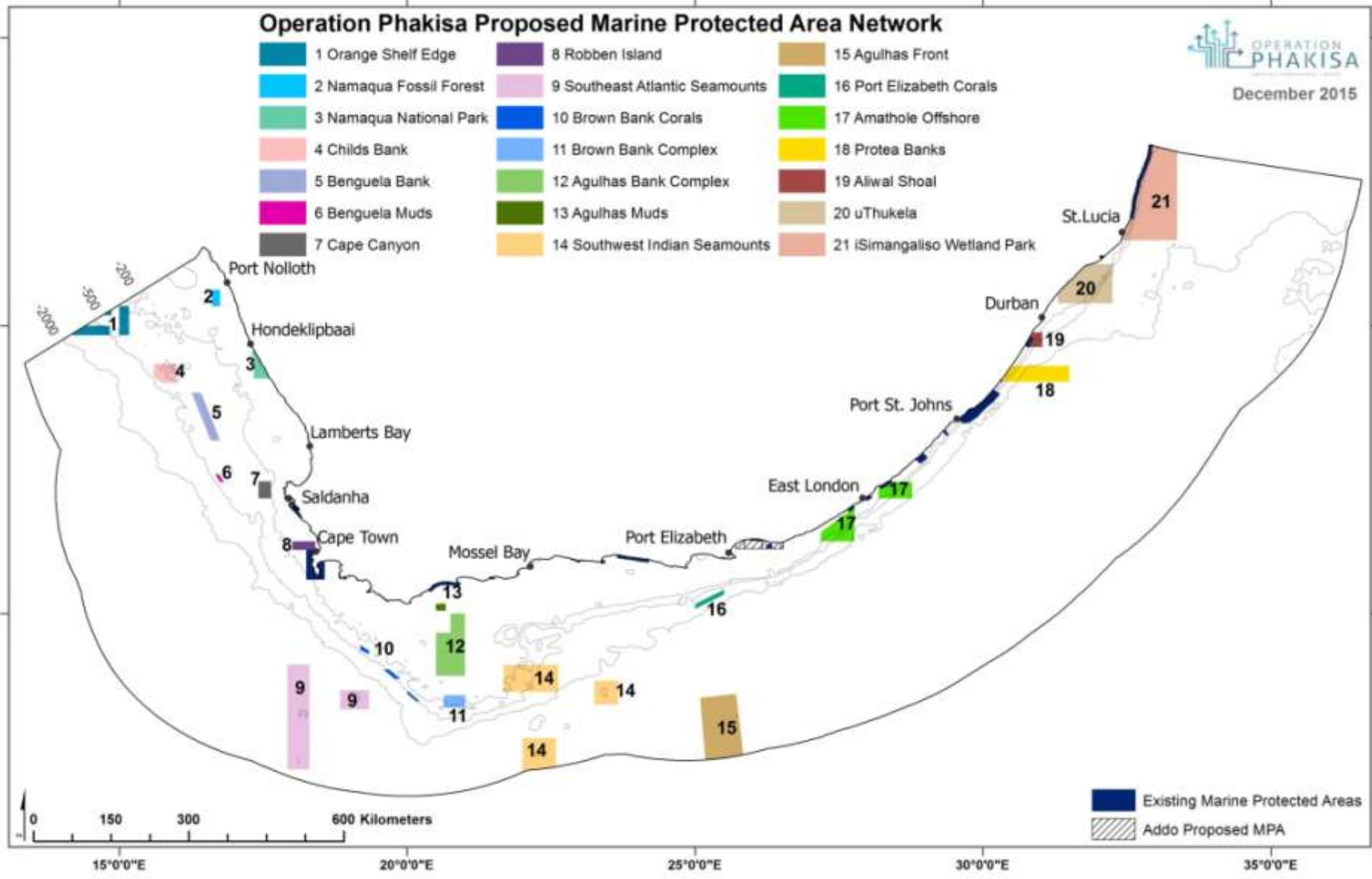
- Controlled
- Controlled Pelagic
- Restricted
- Sanctuary
- Wilderness
- Current MPAs

Operation Phakisa Proposed Marine Protected Area Network



December 2015

- | | | |
|-------------------------|--------------------------------|------------------------------|
| 1 Orange Shelf Edge | 8 Robben Island | 15 Agulhas Front |
| 2 Namaqua Fossil Forest | 9 Southeast Atlantic Seamounts | 16 Port Elizabeth Corals |
| 3 Namaqua National Park | 10 Brown Bank Corals | 17 Amathole Offshore |
| 4 Childs Bank | 11 Brown Bank Complex | 18 Protea Banks |
| 5 Benguela Bank | 12 Agulhas Bank Complex | 19 Aliwal Shoal |
| 6 Benguela Muds | 13 Agulhas Muds | 20 uThukela |
| 7 Cape Canyon | 14 Southwest Indian Seamounts | 21 iSimangaliso Wetland Park |



Existing Marine Protected Areas
 Addo Proposed MPA



Child's Bank

- 1 335 km²
- Sensitive ecosystem, corals



Benguela Bank

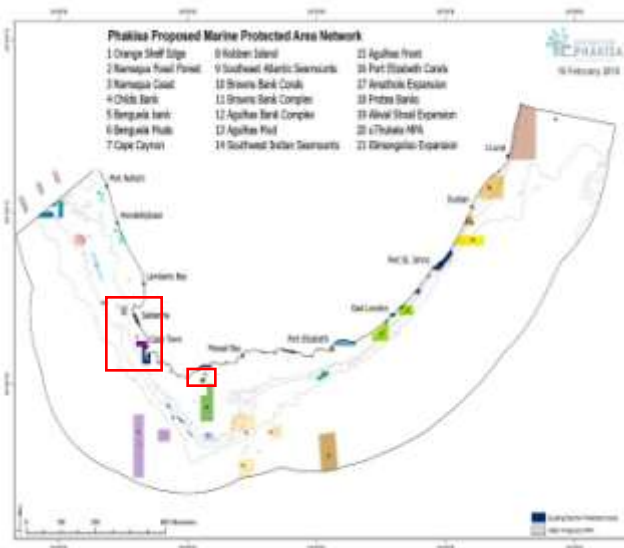
- 1 460 km²
- Untrawled offshore habitats, hard ground



Benguela Muds

- 90 km²
- Critically endangered mud habitat in good condition





Cape Canyon

- 660 km²
- West coast canyon
- Lower socio-economic cost



Robben Island

- 620 km²
- Island ecosystem
- Endangered seabirds



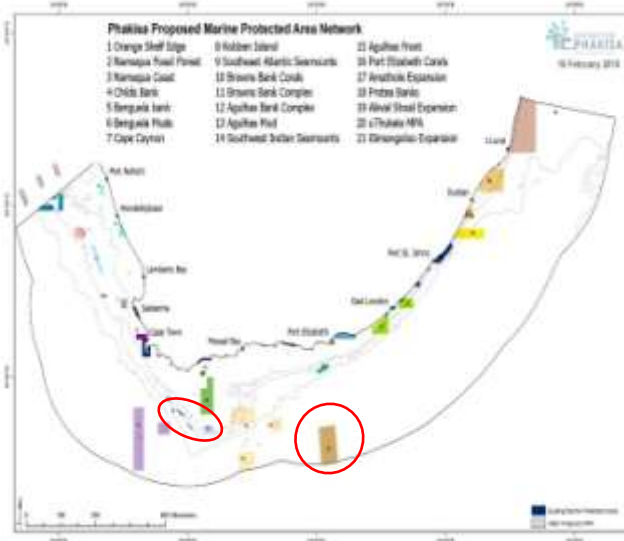
Agulhas Mud

- 207 km²
- Good condition mud habitat



Agulhas Front

- 6884 km²
- Habitat diversity
- EBSA area for life history



Brown's Bank Corals

- 380 km²
- Cold water corals



Brown's Bank Complex

- 783 km²
- High habitat diversity incl. gravels
- Low socio-economic impact



Southeast Atlantic Seamounts

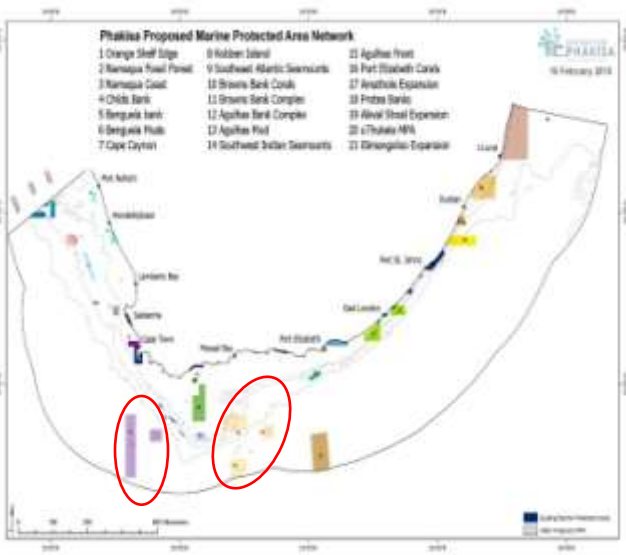
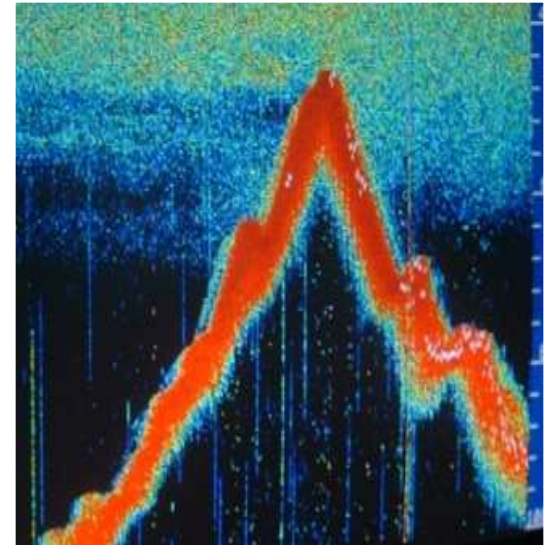
- 8585 km²
- Seamount ecosystems

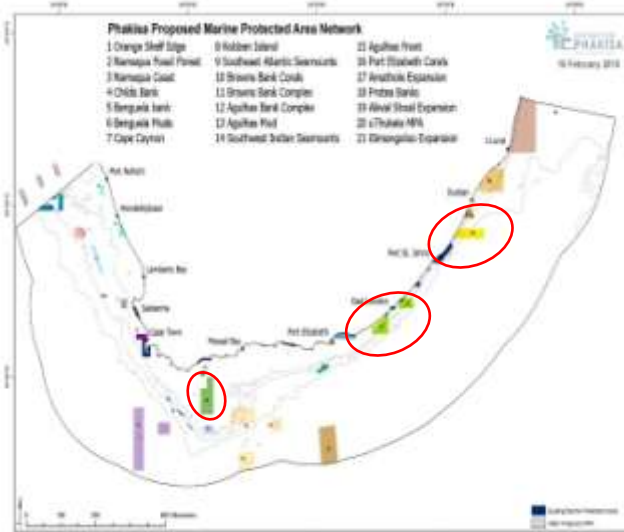


Data provided by Anadarko

Southwest Indian Seamounts

- 9450 km²
- Seamount & many other deep habitats





Agulhas Bank Complex

- 4 608 km²
- Nursery & spawning area
- Fisheries sustainability



Amathole Offshore

- 3 810 km²
- Line fish recovery
- Habitat diversity
- Coelacanth site

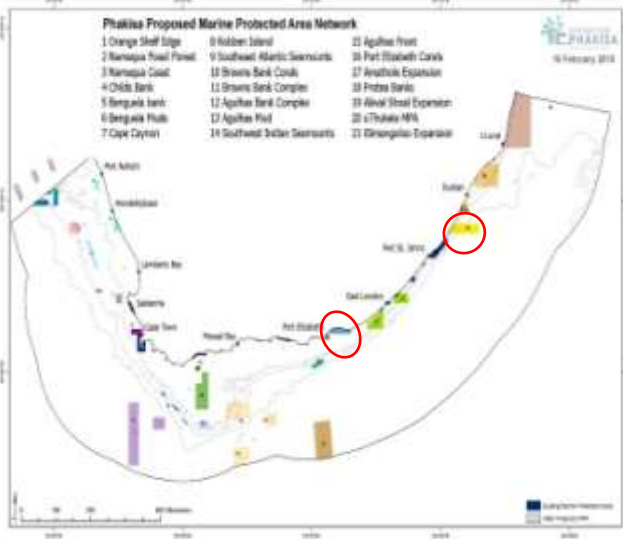


Protea banks

3229 km²

- Shark aggregations & eco-tourism





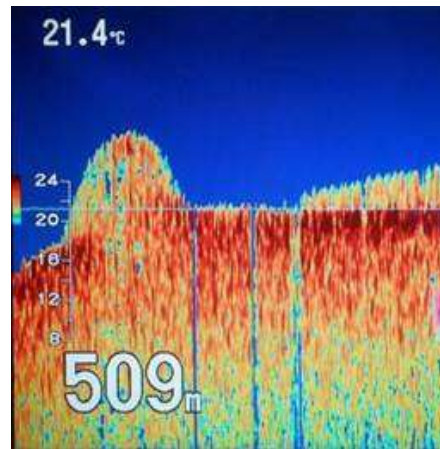
Addo Elephant

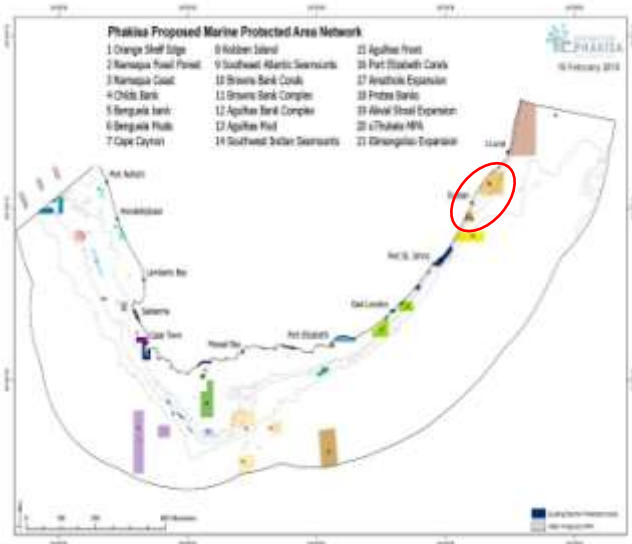
- 1 164 km²
- African penguin, linefish & abalone



Port Elizabeth Corals

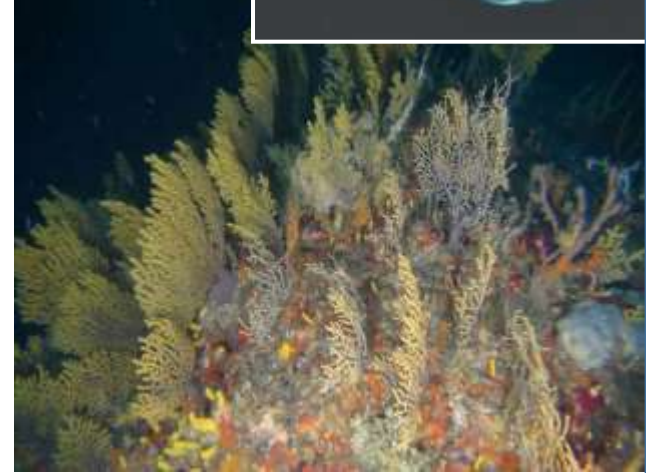
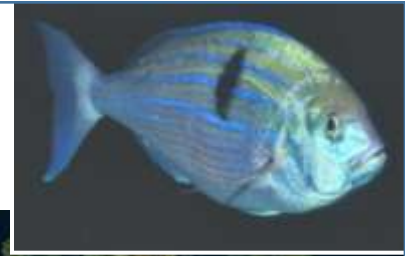
- 500 km²
- Cold water coral reef
- Kingklip spawning





Aliwal Shoal Expansion

- 577 km²
- Fish spawning ground
- Deep reefs



uThukela Banks

- 5666 km²
- Coast canyon connectivity
- Nursery area
- Soft sediment habitats

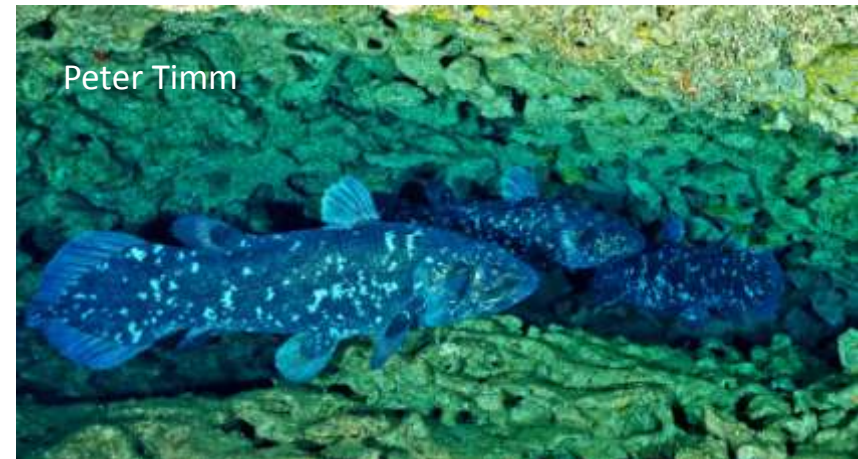
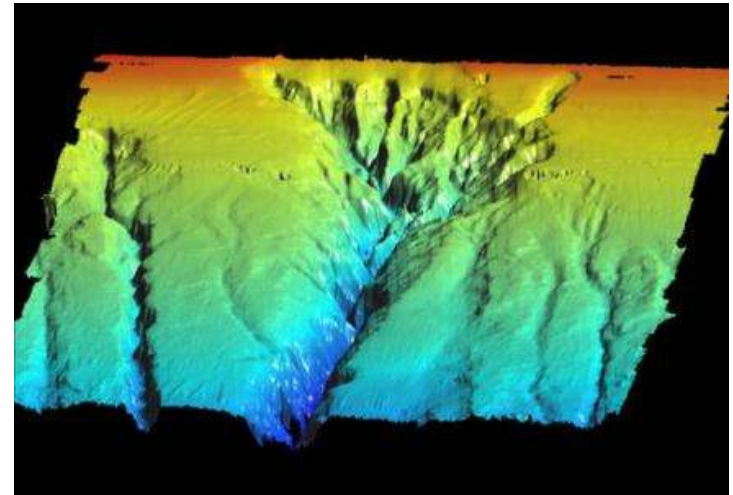


iSimangaliso extension

Mozambique border – Cape
St Lucia lighthouse
14 236 km², 0-1800m

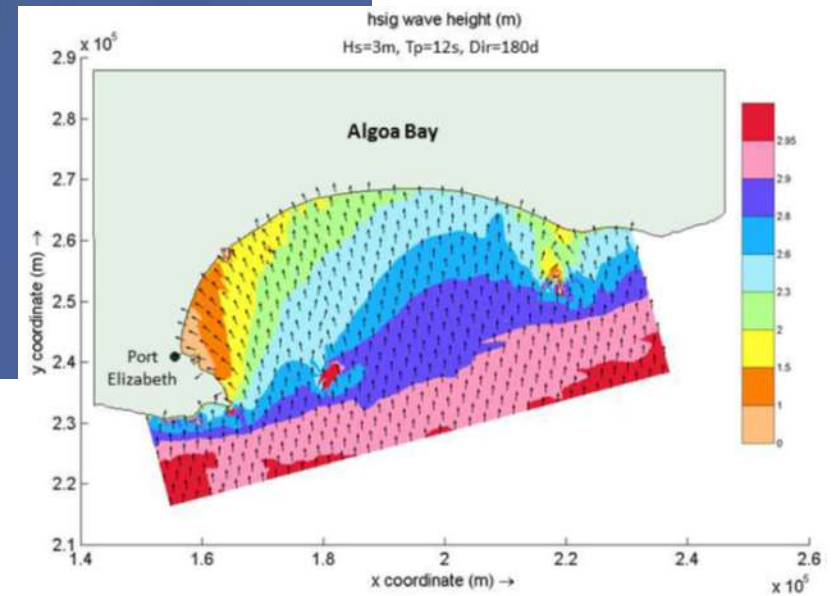
- Leatherback turtle foraging area & importance for migratory species
- Coelacanth habitat
- Alignment with World Heritage Site boundaries
- Integrated enforcement opportunities

Brian
Skerry ©



Key sources of info: Harris et al. (2012), Sink et al. (2012, 2011), Sink and Samaai (2009),

CO-EXISTENCE FOR SUSTAINABILITY



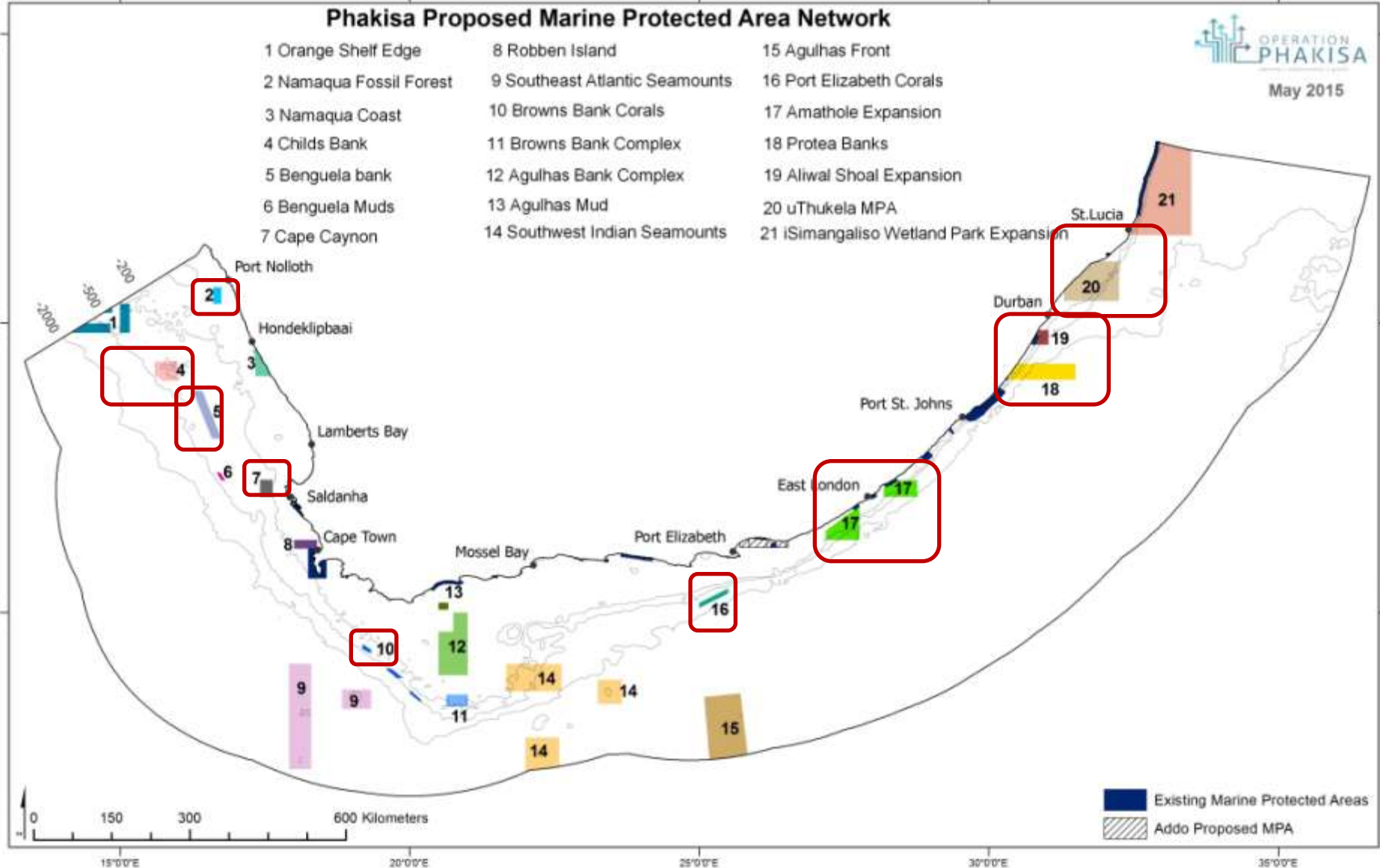
New offshore research unlocked



May 2015

Phakisa Proposed Marine Protected Area Network

- | | | |
|-------------------------|--------------------------------|--|
| 1 Orange Shelf Edge | 8 Robben Island | 15 Agulhas Front |
| 2 Namaqua Fossil Forest | 9 Southeast Atlantic Seamounts | 16 Port Elizabeth Corals |
| 3 Namaqua Coast | 10 Browns Bank Corals | 17 Amathole Expansion |
| 4 Childs Bank | 11 Browns Bank Complex | 18 Protea Banks |
| 5 Benguela bank | 12 Agulhas Bank Complex | 19 Aliwal Shoal Expansion |
| 6 Benguela Muds | 13 Agulhas Mud | 20 uThukela MPA |
| 7 Cape Caynon | 14 Southwest Indian Seamounts | 21 iSimangaliso Wetland Park Expansion |



Existing Marine Protected Areas
 Addo Proposed MPA

Key aspects for preparation of comments

- Gazette can be downloaded from DEA website by following the link below:
- https://www.environment.gov.za/sites/default/files/gazetted_notices/nempaa57of2003_draftregulations_newproposedmarineprotectedarea1_gg39646.pdf
- **By email:** MPARegs@environment.gov.za
- Closing date – 17 May 2016

For more information contact:

Director Biodiversity and MPAs – Mr Xola Mkefe
xmkefe@environment.gov.za

Cell: +27 82 6618 152



environmental affairs

Department:
Environmental Affairs
REPUBLIC OF SOUTH AFRICA

