

ASSESSING PROTECTED AREA MANAGEMENT EFFECTIVENESS



OVERVIEW

- **What is management effectiveness**
- **Different types of assessment**
- **One example of a methodology**
- **How PAME assessments can be used**



THE CONTEXT

WORLD PARKS AND PROTECTED LANDS



Devil's Postpile National Monument, U.S.A. Known for its rare black trillium, this area is one of the world's most remote. It's a hidden gem, a place where nature is still wild and free.



Glacier National Park, U.S.A. Known for its stunning views of the mountains, this park is a treasure trove of natural beauty. It's a place where you can see the world's largest glacier.



Western U.S. & Canada This area is home to some of the world's most beautiful landscapes. It's a place where you can see the world's largest glacier.



Madidi National Park, Bolivia This park is home to some of the world's most beautiful landscapes. It's a place where you can see the world's largest glacier.



Amazon Basin, Brazil This area is home to some of the world's most beautiful landscapes. It's a place where you can see the world's largest glacier.



Arctic Region, U.S.A. This area is home to some of the world's most beautiful landscapes. It's a place where you can see the world's largest glacier.



Sierra Nevada, U.S.A. This area is home to some of the world's most beautiful landscapes. It's a place where you can see the world's largest glacier.



Arctic Region, U.S.A. This area is home to some of the world's most beautiful landscapes. It's a place where you can see the world's largest glacier.



Sierra Nevada, U.S.A. This area is home to some of the world's most beautiful landscapes. It's a place where you can see the world's largest glacier.



Arctic Region, U.S.A. This area is home to some of the world's most beautiful landscapes. It's a place where you can see the world's largest glacier.



Sierra Nevada, U.S.A. This area is home to some of the world's most beautiful landscapes. It's a place where you can see the world's largest glacier.



Arctic Region, U.S.A. This area is home to some of the world's most beautiful landscapes. It's a place where you can see the world's largest glacier.



Sierra Nevada, U.S.A. This area is home to some of the world's most beautiful landscapes. It's a place where you can see the world's largest glacier.

THE BIG PICTURE

The World Conservation Union (IUCN) is the leading international organization for the conservation of nature. It's a place where you can see the world's largest glacier.

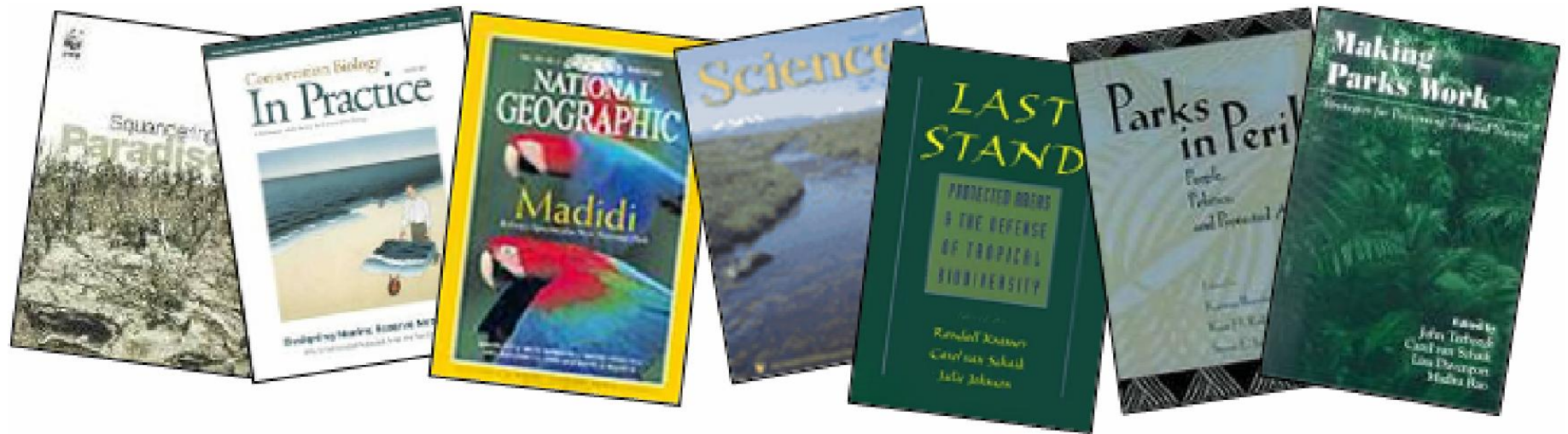
The World Conservation Union (IUCN) is the leading international organization for the conservation of nature. It's a place where you can see the world's largest glacier.

Today's new national parks join a long list of the world's most beautiful landscapes. It's a place where you can see the world's largest glacier.



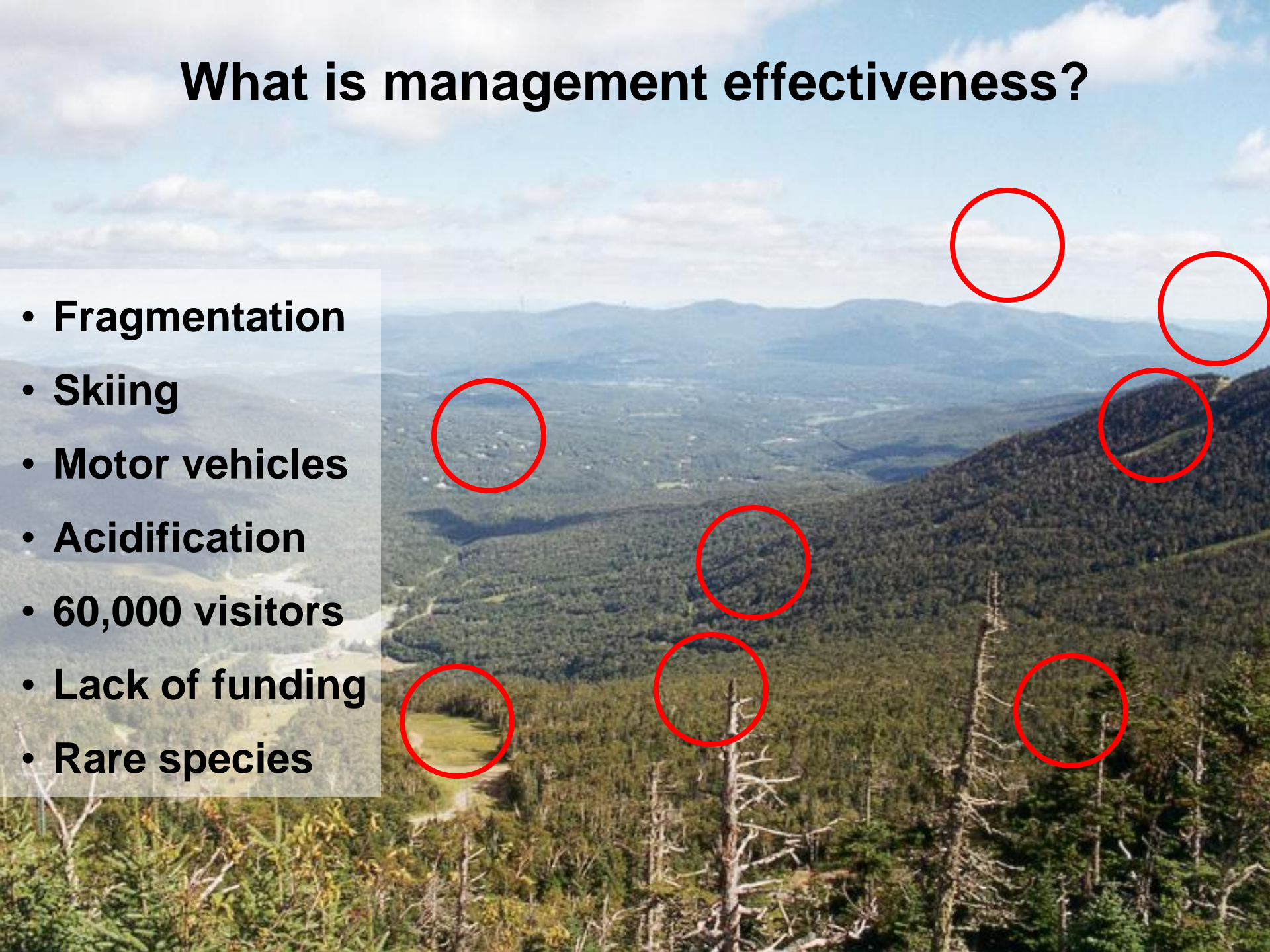
National Geographic, 2003

Many recent studies have highlighted problems with protected area management effectiveness



What is management effectiveness?

- Fragmentation
- Skiing
- Motor vehicles
- Acidification
- 60,000 visitors
- Lack of funding
- Rare species



Management effectiveness can be **measured by:**

- Threats
- Management weaknesses
- Policy constraints



Definition of threat

Any human-related activity that has, or will have, a negative impact on biodiversity



THREATS



Development



Agriculture/aquaculture



Energy production



Transportation



Resource use/misuse



Recreation/tourism



System modification



Invasives



Pollution

CLIMATE CHANGE



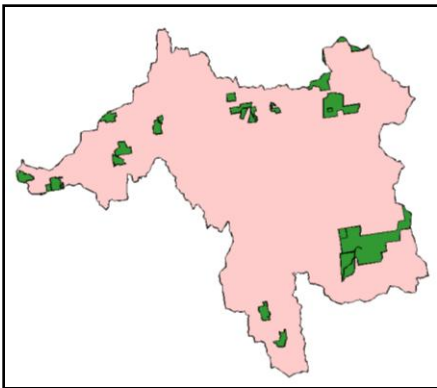
Definition of management weakness

Any deficiency in management planning, inputs, processes or outputs that result in the decline of biodiversity



1. Planning

- Objectives
- Legal security
- PA design



2. Inputs

- Staffing
- Communication
- Infrastructure
- Finances



3. Processes

- Management planning
- Decision making
- Research



4. Outputs



- Threat prevention
- Site restoration
- Habitat management
- Education
- Visitor management
- Supervision
- Training
- Research



Definition of policy constraint

Any deficiency or weakness in the policy environment that results in the decline of biodiversity

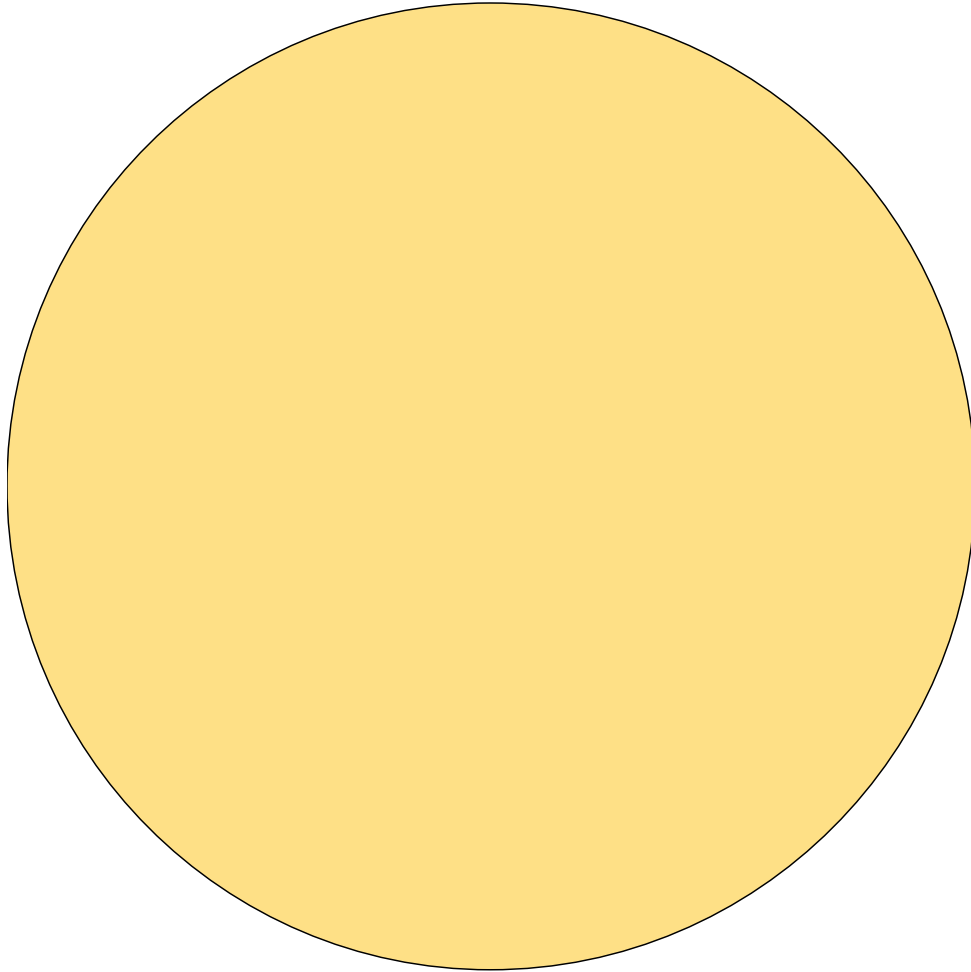


Definition of policy environment

The laws, policies, practices and attitudes that define the societal arena within which a protected area system operates



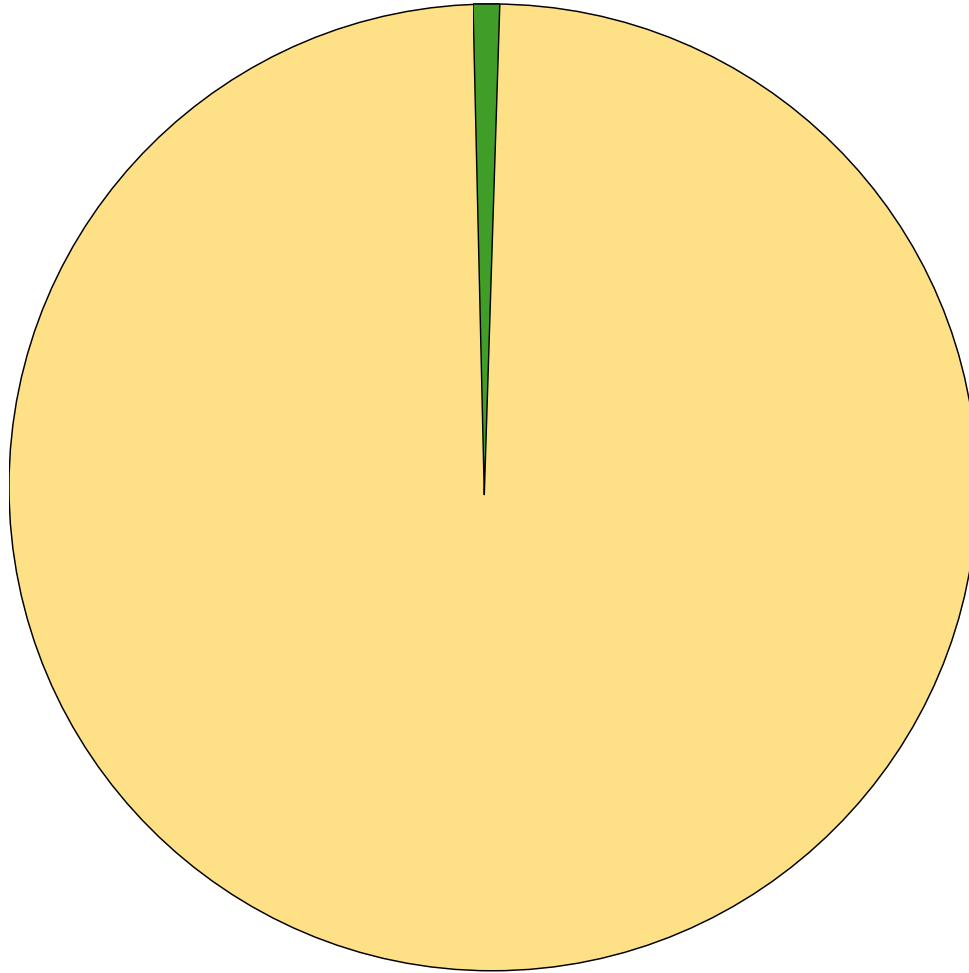
Why assess protected area policy environment?



Overseas Aid

- US\$ ~100,000 mm

Why assess protected area policy environment?



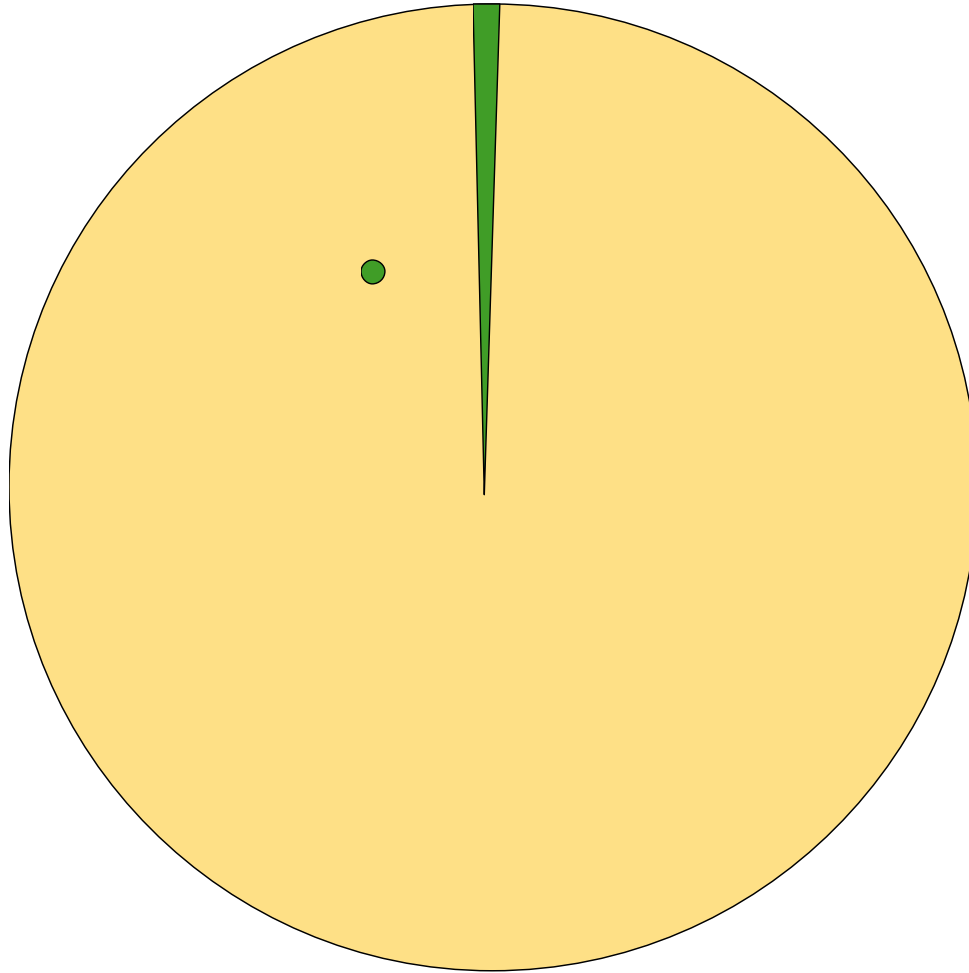
Overseas Aid

- US\$ ~100,000 mm

Environmental Aid

- US\$ ~1,400 mm

Why assess protected area policy environment?



Overseas Aid

- US\$ ~100,000 mm

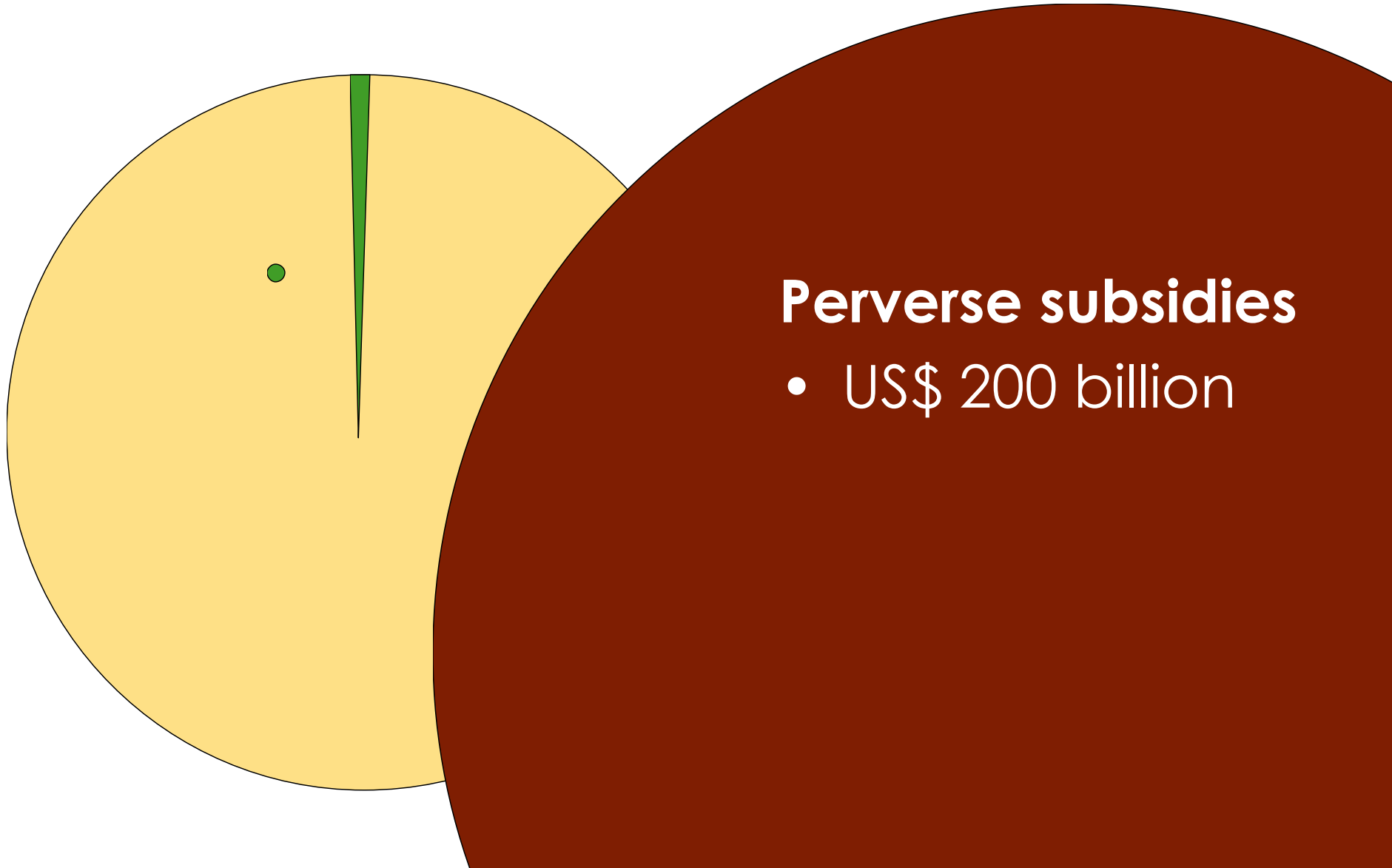
Environmental Aid

- US\$ ~1,400 mm

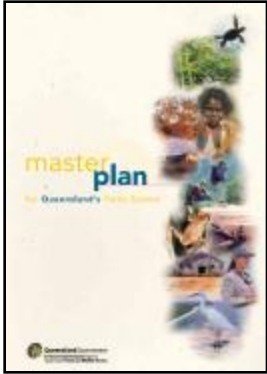
Protected Areas

- A drop in the bucket

Why assess protected area policy environment?



1. National environmental leadership



- National vision
- Demonstrated political will
- Adequate environmental education



2. Coordination and communication



- Mechanisms for dialogue
- Cooperation with neighboring countries
- Coordination with related sectors



3. Land use planning policies



- Buffer zones
- Policies to limit urban sprawl
- Mechanisms for private PAs
- Compatible land tenure policies



4. Resource use policies



- Sectoral policies do not conflict with PA objectives
 - Forestry
 - Agriculture
 - Fisheries
 - Water
 - Energy
 - Tourism/recreation



5. Legal and judiciary environment



- Societal laws do not conflict with PA objectives
- The judicial system is comprehensive, fair and implemented



6. Policy incentives



- Absence of perverse incentives
- Existence of positive and negative incentives
- Existence of market-based incentives



7. Protected area finance and funding



- Sufficient and diverse finance mechanisms
- Resource allocation
- Business planning
- Accounting and monitoring



8. System-level protected area policies



- Clear national goals
- National policies on PA resource use
- National monitoring systems



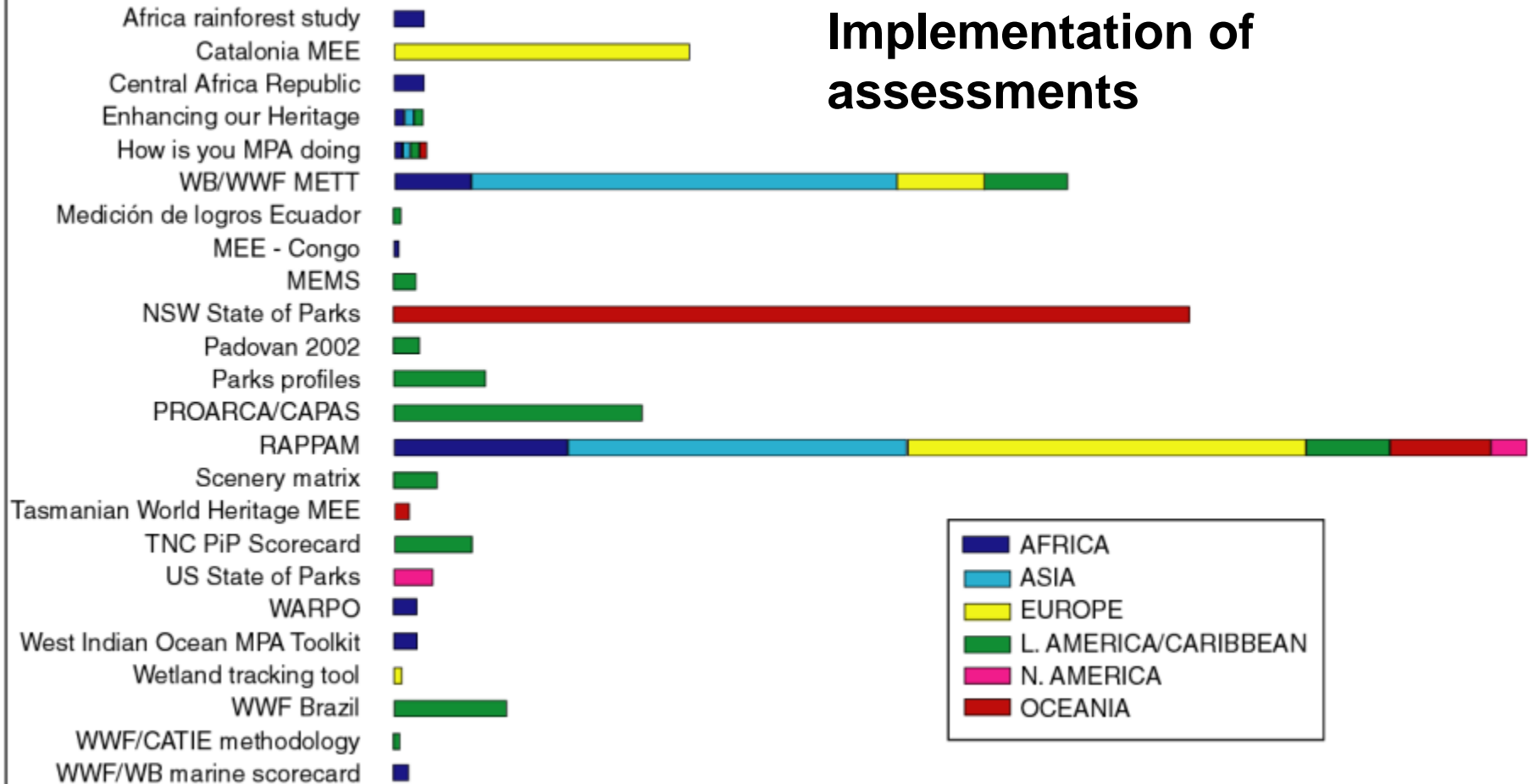
What are the tools for assessing management effectiveness?



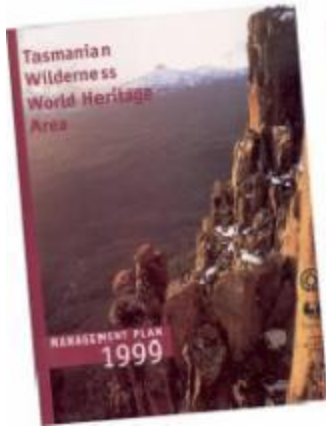
www.protectedareatools.org



Implementation of assessments



There are three basic approaches:



In-depth, evidence-based



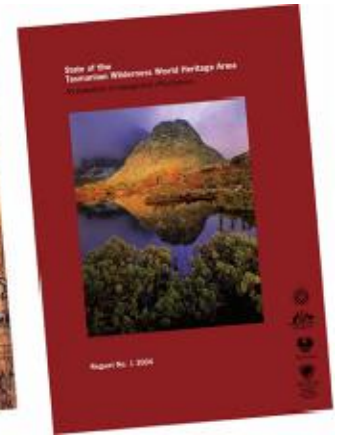
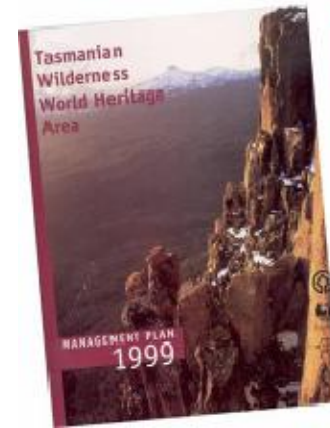
System-wide peer-based



Scorecard expert-based

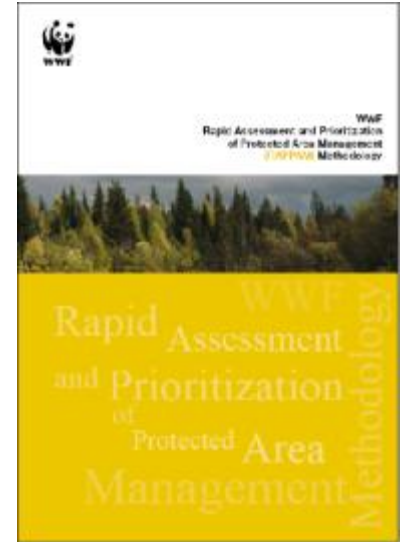
In-depth, evidence-based assessments

- Based on key desired outcomes
- Focus is on measuring biological **outcomes**
- Measures change over time
- Best for adaptive management at site level



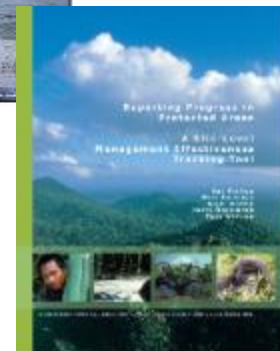
System-wide peer-based assessments

- Based on questionnaire
- Involves peer workshops
- Includes stakeholders
- Scoring is relative to PA objectives, threats, other PAs
- Best for system-level analyses, tracking broad trends over time

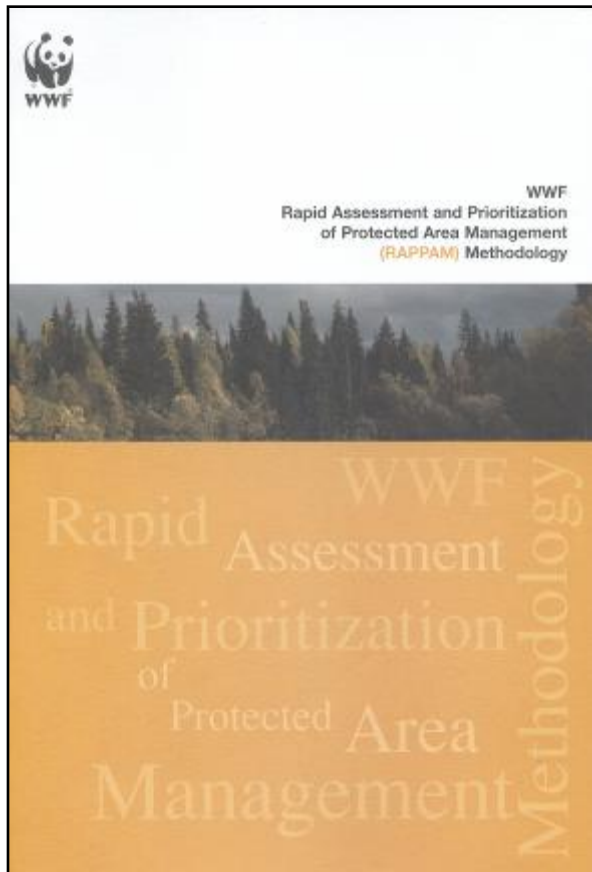


Rapid scorecard assessments

- Fast, cheap
- Conducted through questionnaire or survey
- Scoring is relative to pre-defined thresholds
- Best for taking a quick snapshot



COMPREHENSIVE, SYSTEM-LEVEL ASSESSMENT



- Threats
- Management elements
- Policy constraints



GETTING STARTED

- **Who – organizing committee**
- **Where**
- **How**



领导干部要艰苦奋斗,勤俭节约。禁止讲排场、比阔气、
公款、铺张浪费。

以艰



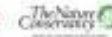
GETTING STARTED

- Who
- Where – scope of assessment
- How





Grenada Protected Area GAP Analysis Protected Areas



Legend

Protected Area Status

- Pending Designation
- Designated



GETTING STARTED

- Who
- Where
- How – process





2. PRESSURES AND THREATS

2 PRESSURES AND THREATS

Pressure:

- ☐ Has ☐ Has not been a pressure in the last 5 years

In the past 5 years this activity has: The overall severity of this pressure over the past 5 years has been:

- ☐ Increased sharply
- ☐ Increased slightly
- ☐ Remained constant
- ☐ Decreased slightly
- ☐ Decreased sharply

Extent

- ☐ Throughout (>50%)
- ☐ Widespread (15–50%)
- ☐ Scattered (5–15%)
- ☐ Localized (<5%)

Impact

- ☐ Severe
- ☐ High
- ☐ Moderate
- ☐ Mild

Permanence

- ☐ Permanent (>100 years)
- ☐ Long term (20–100 years)
- ☐ Medium term (5–20 years)
- ☐ Short term (<5 years)

Threat:

- ☐ Will ☐ Will not be a threat in the next 5 years

The probability of the threat occurring is:

- ☐ Very high
- ☐ High
- ☐ Medium
- ☐ Low
- ☐ Very low

The overall severity of this threat over the next 5 years is likely to be:

Extent

- ☐ Throughout (>50%)
- ☐ Widespread (15–50%)
- ☐ Scattered (5–15%)
- ☐ Localized (<5%)

Impact

- ☐ Severe
- ☐ High
- ☐ Moderate
- ☐ Mild

Permanence

- ☐ Permanent (>100 years)
- ☐ Long term (20–100 years)
- ☐ Medium term (5–20 years)
- ☐ Short term (<5 years)



2. PRESSURES AND THREATS

2 PRESSURES AND THREATS

POACHING

Pressure:

☒ Has ☐ Has not been a pressure in the last 5 years

In the past 5 years this activity has: | The overall severity of this pressure over the past 5 years has been:

- ☐ Increased sharply
- ☐ Increased slightly
- ☒ Remained constant
- ☐ Decreased slightly
- ☐ Decreased sharply

Extent

- ☐ Throughout (>50%)
- ☐ Widespread (15–50%)
- ☒ Scattered (5–15%)
- ☐ Localized (<5%)

Impact

- ☐ Severe
- ☐ High
- ☒ Moderate
- ☐ Mild

Permanence

- ☐ Permanent (>100 years)
- ☒ Long term (20–100 years)
- ☐ Medium term (5–20 years)
- ☐ Short term (<5 years)

Threat:

☒ Will ☐ Will not be a threat in the next 5 years

The probability of the threat occurring is:

- ☐ Very high
- ☒ High
- ☐ Medium
- ☐ Low
- ☐ Very low

The overall severity of this threat over the next 5 years is likely to be:

Extent

- ☐ Throughout (>50%)
- ☒ Widespread (15–50%)
- ☐ Scattered (5–15%)
- ☐ Localized (<5%)

Impact

- ☐ Severe
- ☐ High
- ☒ Moderate
- ☐ Mild

Permanence

- ☐ Permanent (>100 years)
- ☒ Long term (20–100 years)
- ☐ Medium term (5–20 years)
- ☐ Short term (<5 years)



9. STAFFING – INPUTS

9 STAFFING

y	m/y	m/n	n
<input type="radio"/>	<input checked="" type="radio"/>	<input type="radio"/>	<input type="radio"/>
<input checked="" type="radio"/>	<input type="radio"/>	<input type="radio"/>	<input type="radio"/>
<input checked="" type="radio"/>	<input type="radio"/>	<input type="radio"/>	<input type="radio"/>
<input type="radio"/>	<input type="radio"/>	<input type="radio"/>	<input checked="" type="radio"/>
<input type="radio"/>	<input checked="" type="radio"/>	<input type="radio"/>	<input type="radio"/>

a) The level of staffing is sufficient to effectively manage the area.

b) Staff members have adequate skills to conduct critical management activities.

c) Training and development opportunities are appropriate to the needs of the staff.

d) Staff performance and progress on targets are periodically reviewed.

e) Staff employment conditions are sufficient to retain high-quality staff.

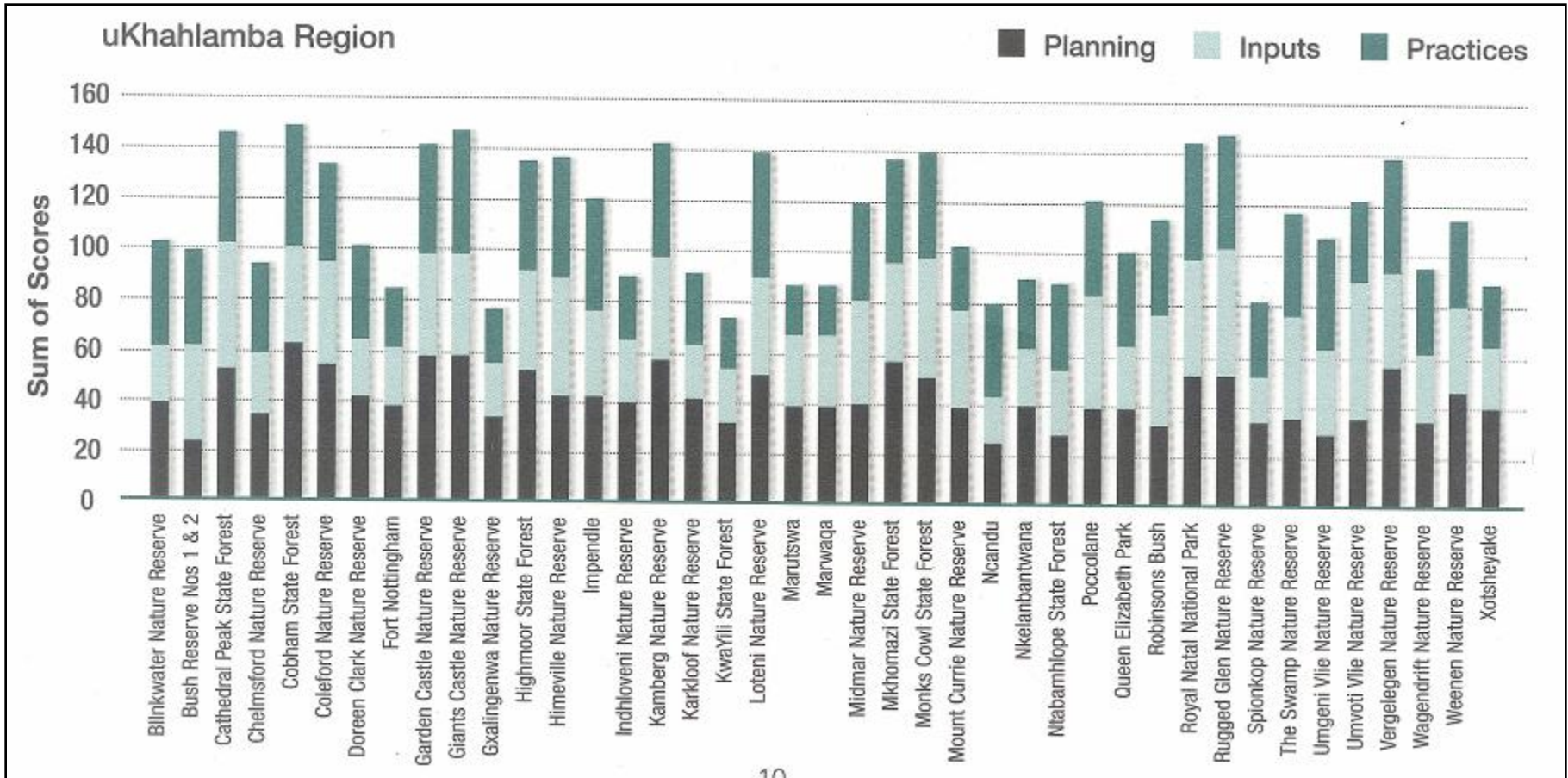


ANALYZING DATA

- **Management elements**
- **Threats and pressures**
- **Cross-cutting analyses**

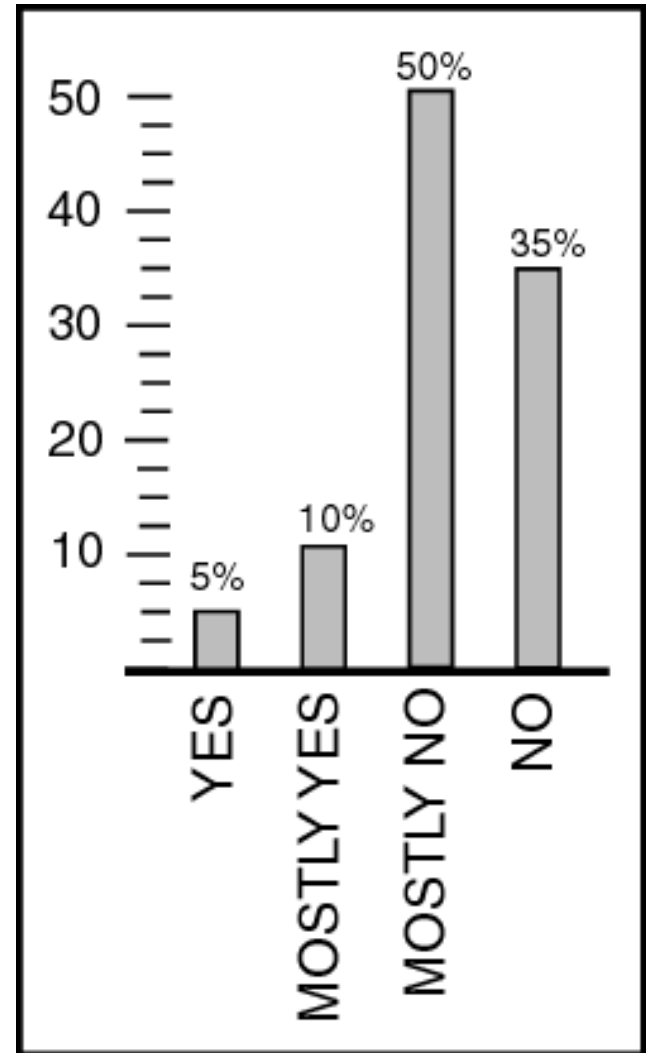


IDENTIFYING BROAD TRENDS



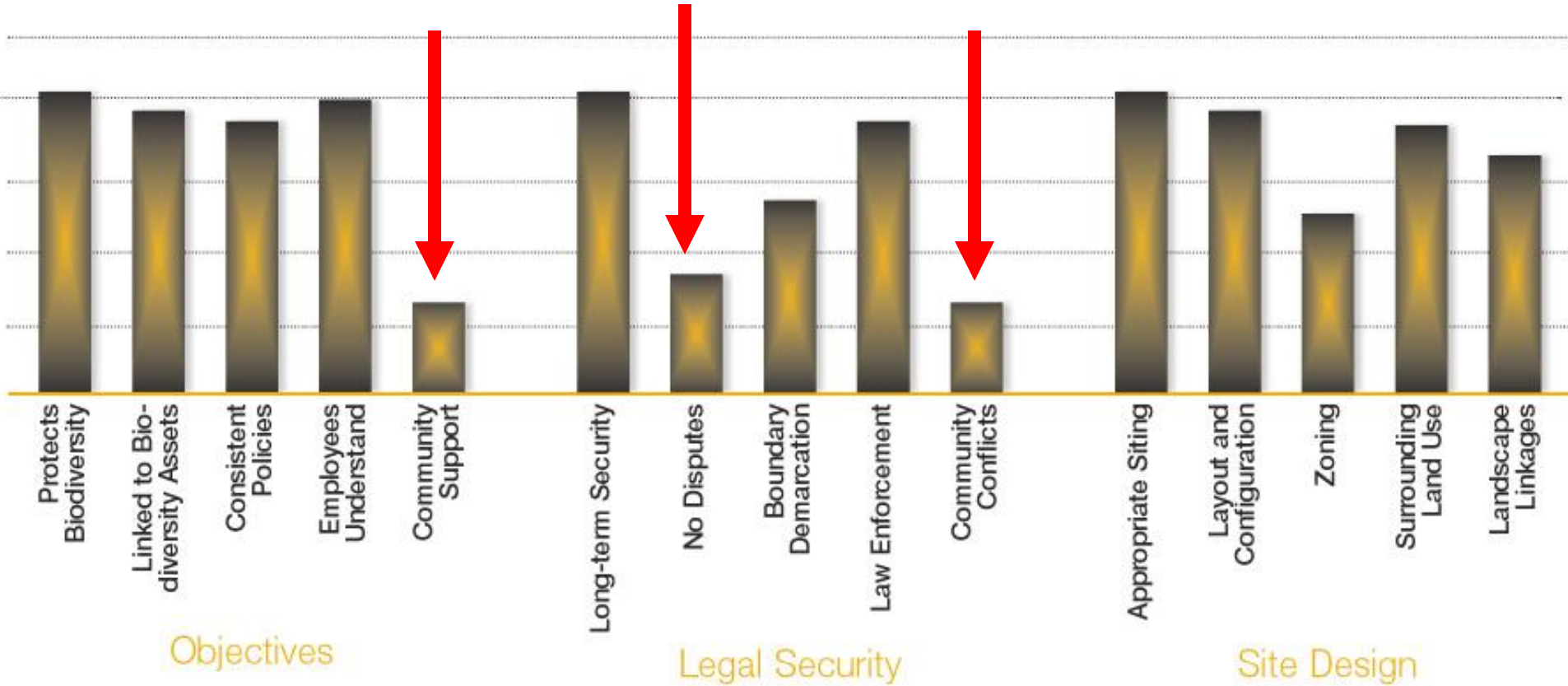
IDENTIFYING SPECIFIC WEAKNESSES

7d) Staff and financial resources are adequate to conduct critical law enforcement activities



IDENTIFYING THEMES

Planning



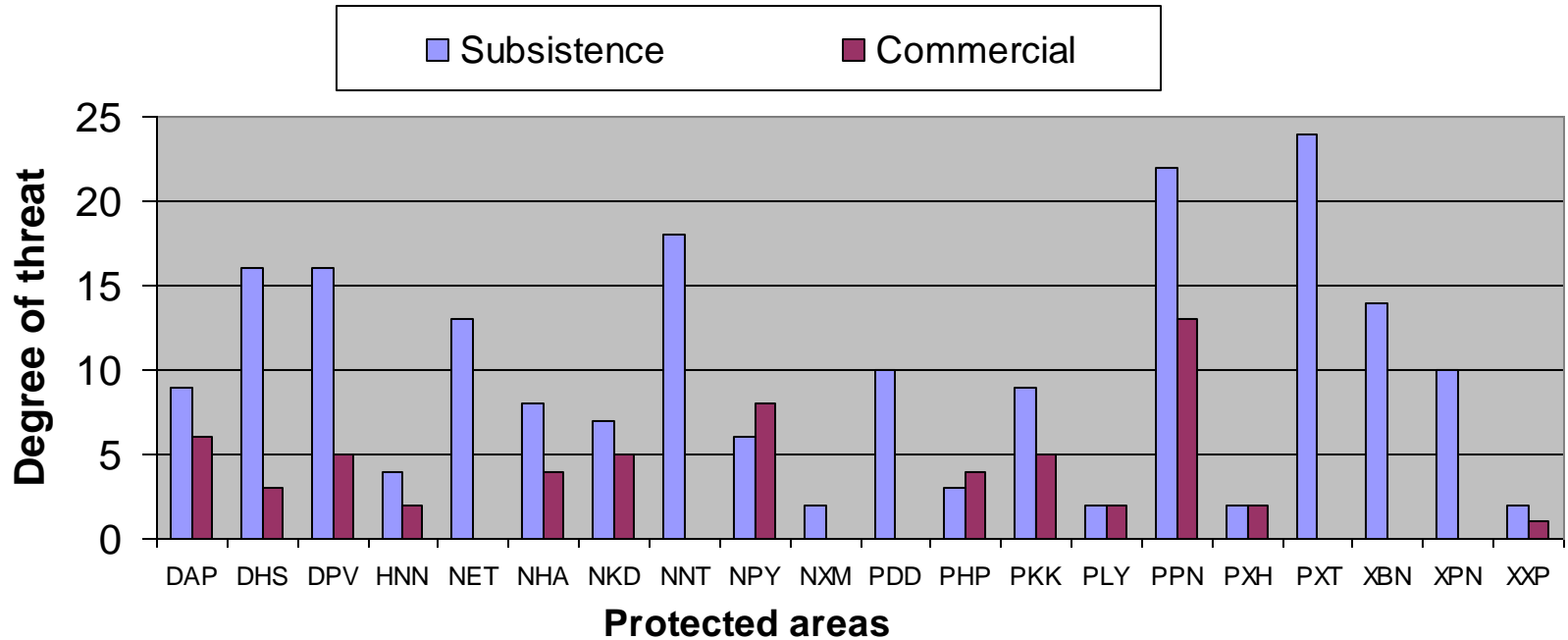
ANALYZING DATA

- Management elements
- Threats and pressures
- Cross-cutting analyses

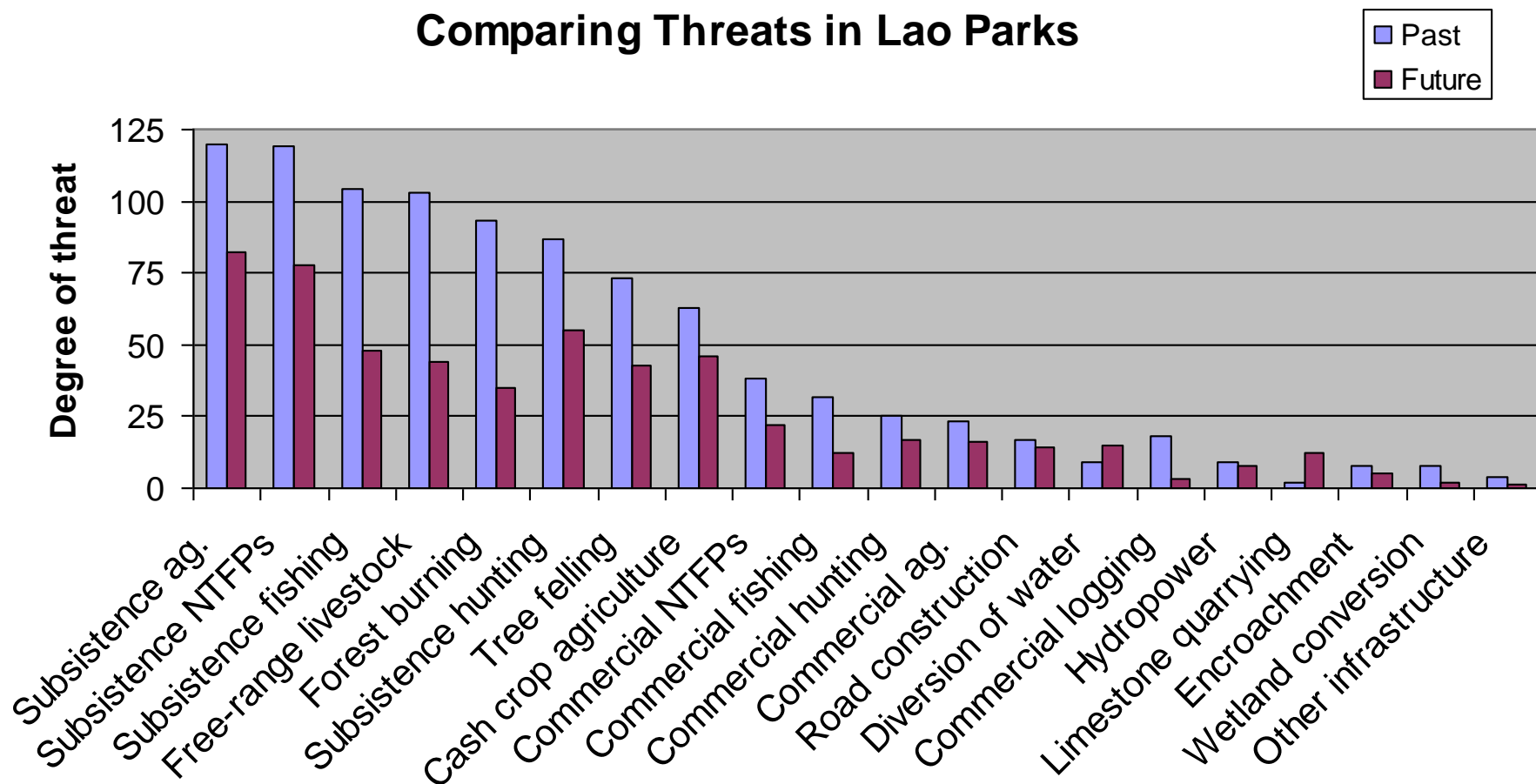


ANALYZING A SINGLE THREAT

Use of NTFPs in Lao Parks



COMPARING THREATS



PROTECTED AREAS

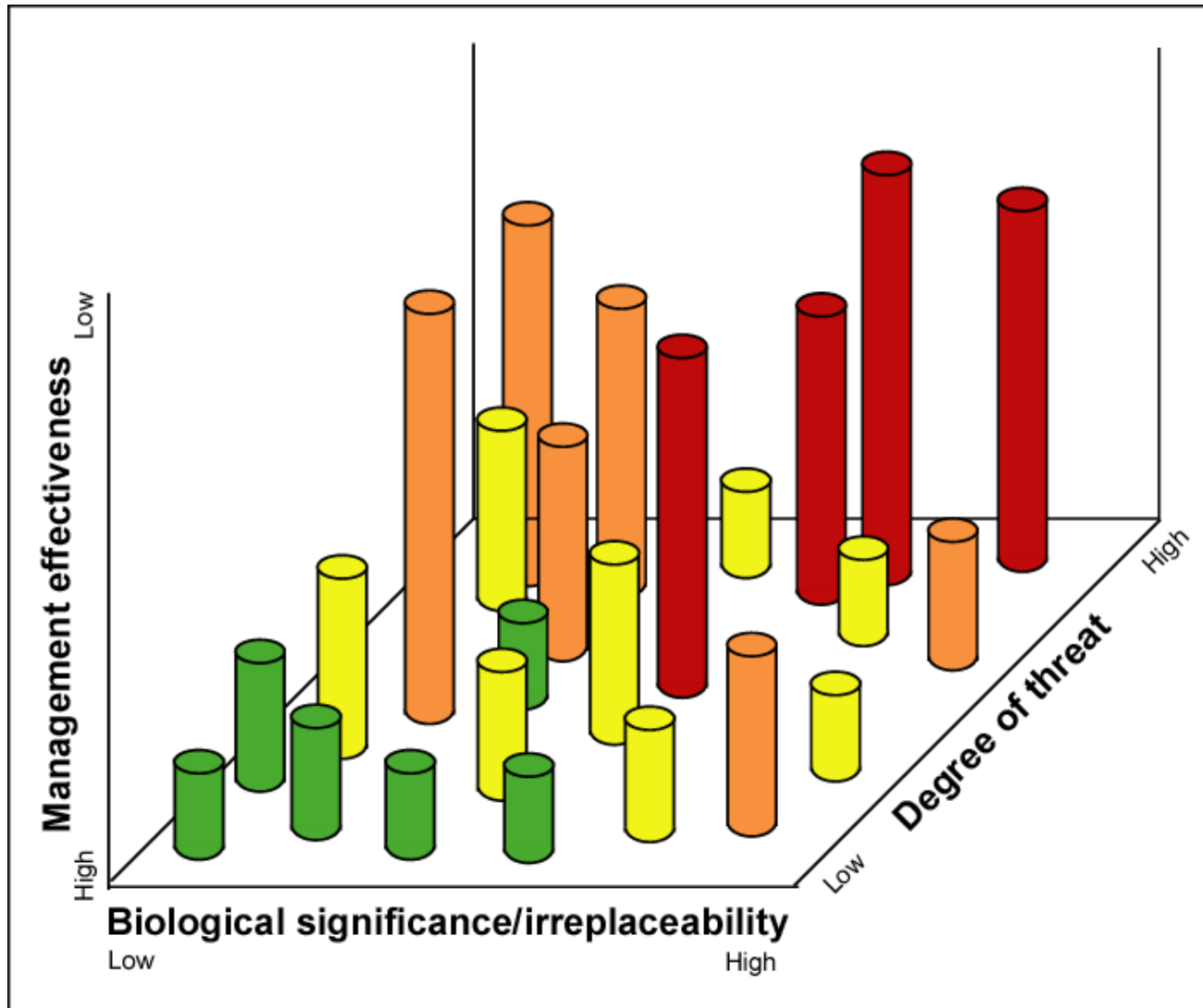


ANALYZING DATA

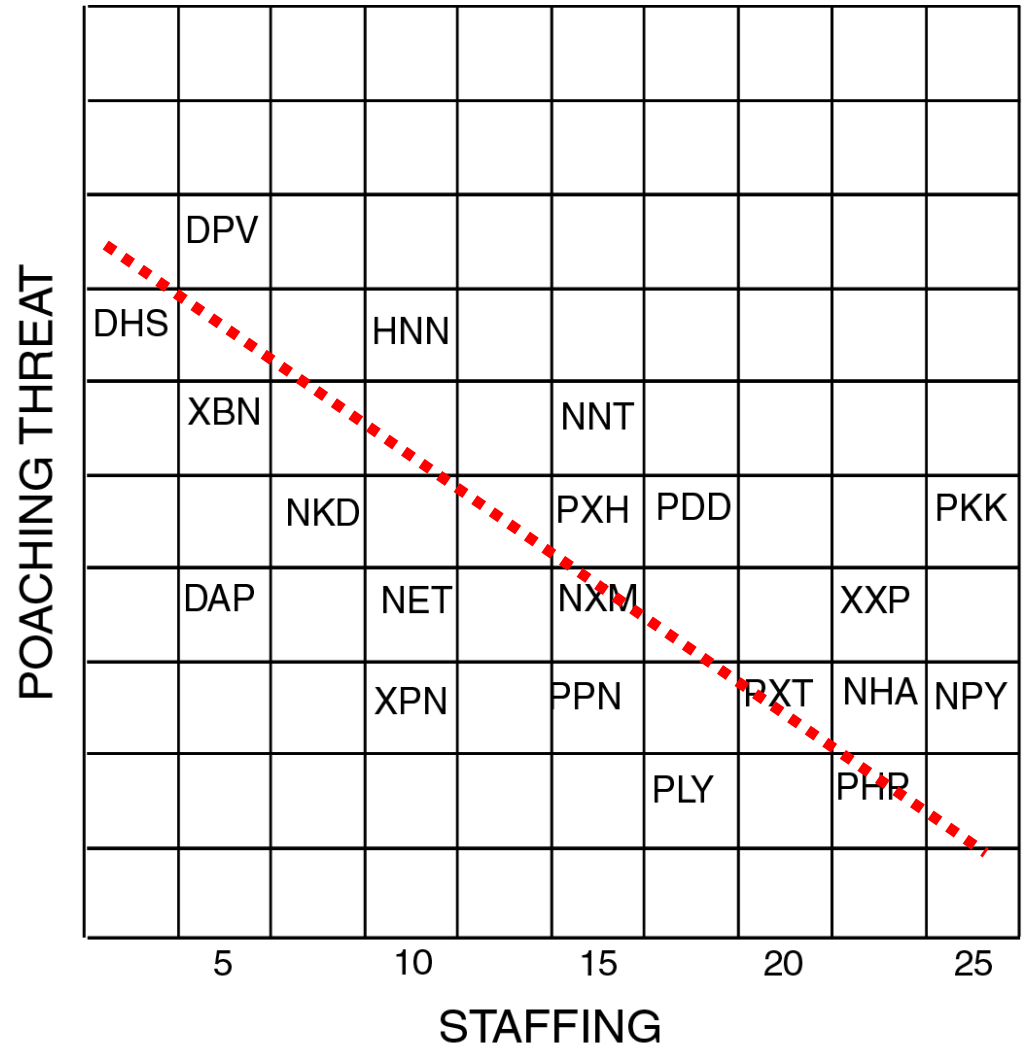
- **Management elements**
- **Threats and pressures**
- **Cross-cutting analyses**



EFFECTIVENESS, SIGNIFICANCE, THREAT



CORRELATIONS



How can we use PAME assessments?

- Foster national dialogue
- Reveal surprises
- Develop and prioritize strategies
- Contribute to regional and global understanding



An aerial photograph of a mountainous landscape. The foreground shows a cleared, yellowish-brown area with some sparse vegetation and a few small trees. A thick red line runs diagonally across the middle of the image, separating the cleared area from a dense, dark green forest that covers the upper slopes of the mountains. The background shows more forested peaks under a clear sky.

GERMANY

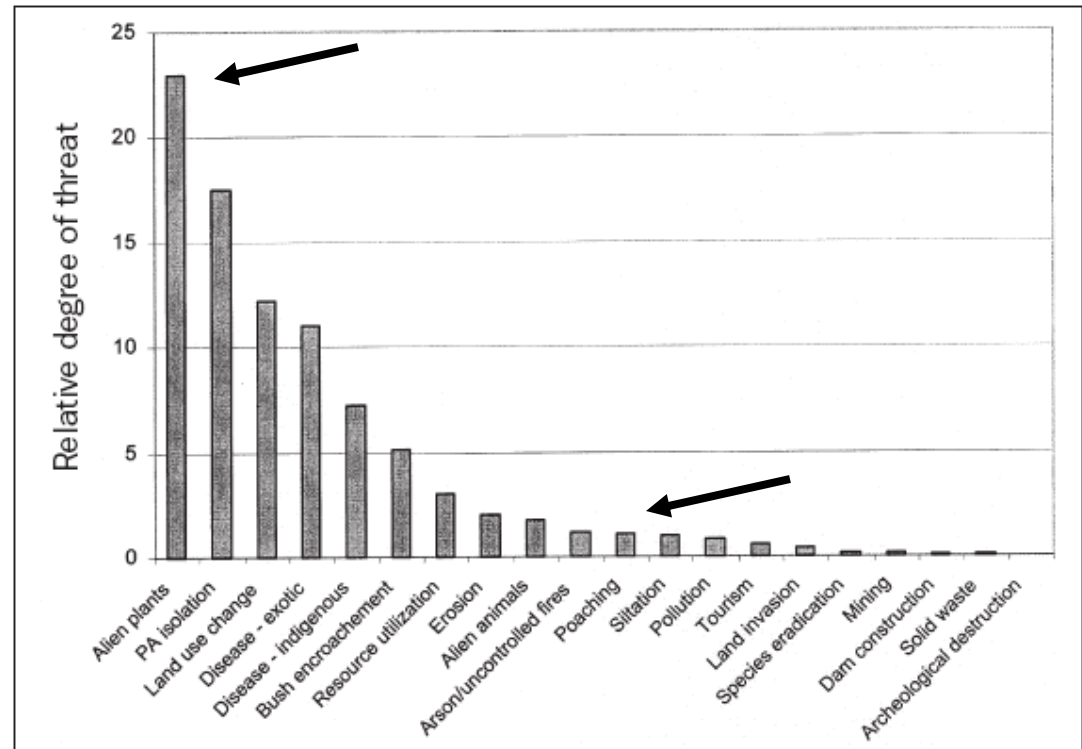
**SUMAVA NATIONAL PARK,
CZECH REPUBLIC**



SLAŽIL KRAJ, MŮJE PLÁNUJÍ

- 1) 1) se - dleplát náhru Oš - fonicar
boudm / eua vřat foy
- 1) 2) - pte obřické fonicar po poutu a
žily poutu poutu (vřat 10) a poutu vřat
křicim vřat poutu vřat 10 (1/2)
- 1) 3) 1) - dleplát náhru poutu a
vřat vřat vřat 10 (1/2) poutu
1) 4) 1) - dleplát náhru poutu a
vřat vřat vřat 10 (1/2) poutu

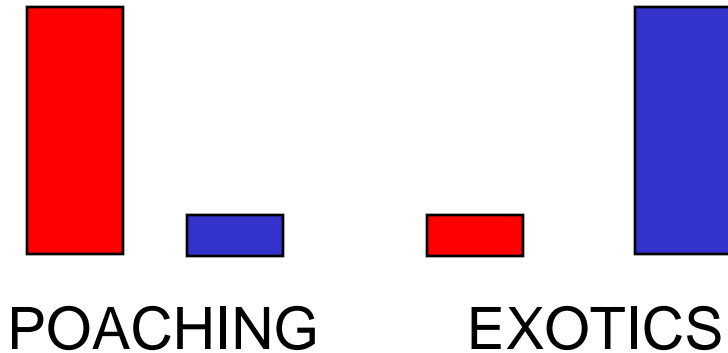
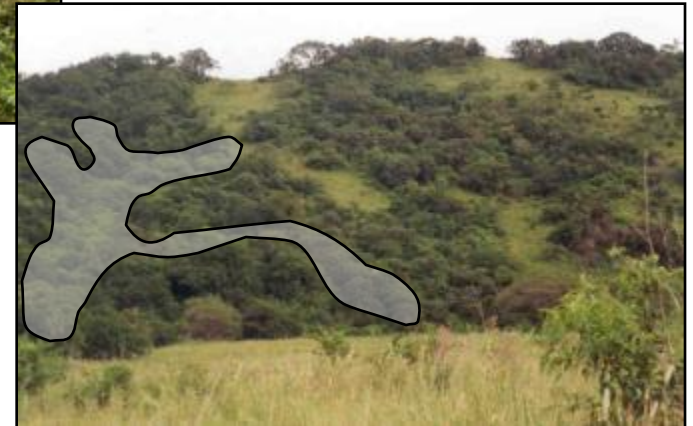
SOUTH AFRICA – poaching vs. exotics



SOUTH AFRICA



EXOTIC PLANTS



How can we use PAME assessments?

Example 1: Bhutan



Management/threat issue

- Insufficient skilled staff

Policy issue

- National bottleneck in higher education

Strategy

- Increase annual number of students admitted

How can we use PAME assessments?

Example 2: Bahamas



Management/threat issue

- Threat of tourism

Policy issue

- No national sustainable tourism policy

Strategy

- Work with tourism ministry to develop plan

How can we use PAME assessments?

Example 1: Czech Republic



Management/threat issue

- Logging

Policy issue

- Forestry department has jurisdiction over trees

Strategy

- Agree on forest management in PAs

SHARE RESULTS

- **Nationally:** to build support for actions
- **Regionally:** to identify regional strategies for building capacity
- **Globally:** to contribute to growing data set
<http://www.unep-wcmc.org/wdpa/me>



EXERCISE

- Choose one key issue in a PA that you are familiar with
- Identify at least one strategy
- Identify at least 2 actions needed to implement that strategy



KEY ISSUE	STRATEGIES	ACTIONS AND CAPACITIES NEEDED TO:

KEY ISSUE	STRATEGIES	ACTIONS AND CAPACITIES NEEDED TO:
Invasive alien species		

KEY ISSUE	STRATEGIES	ACTIONS AND CAPACITIES NEEDED TO:
Invasive alien species	Prevent the introduction of new invasive species	

KEY ISSUE	STRATEGIES	ACTIONS AND CAPACITIES NEEDED TO:
Invasive alien species	Prevent the introduction of new invasive species	Detect new encroachments
		Develop monitoring protocols
		Educate plant nurseries

KEY ISSUE	STRATEGIES	ACTIONS AND CAPACITIES NEEDED TO:
Invasive alien species	Prevent the introduction of new invasive species	Detect new encroachments
		Develop monitoring protocols
		Educate plant nurseries
	Eradicate or control existing invasive species	

KEY ISSUE	STRATEGIES	ACTIONS AND CAPACITIES NEEDED TO:
Invasive alien species	Prevent the introduction of new invasive species	Detect new encroachments
		Develop monitoring protocols
		Educate plant nurseries
	Eradicate or control existing invasive species	Detect, eradicate and control species in priority areas
		Develop protected area invasive plant strategy