

Governance and Benefit Sharing in PAs in Nepal



Shant R. Jnawali, PhD
National Trust for Nature Conservation (NTNC)
Nepal

Background

■ Although Nepal contributes only 1% to world's landmass, it provides safe home for

- 2 % of all flowering plants
- 2 % of all reptiles
- 9 % of all birds
- 5 % of all the mammals

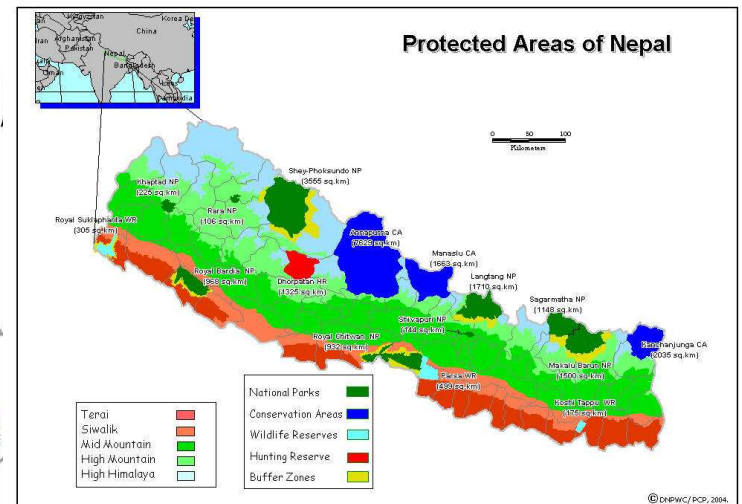
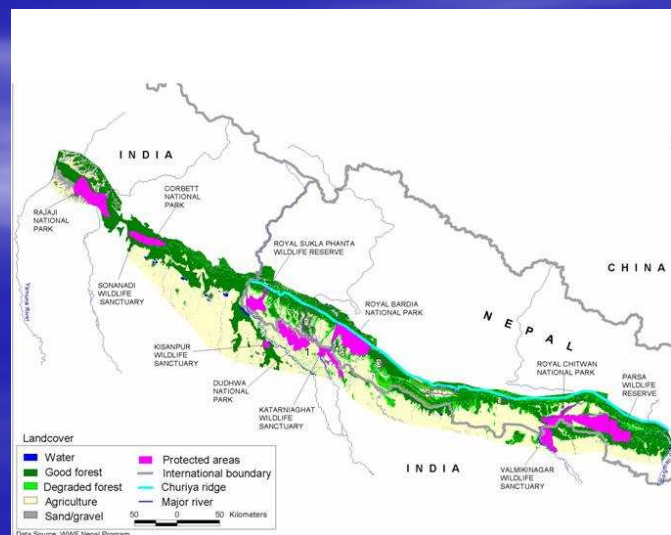


Conservation Initiatives

Species level

Ecosystem level

Landscape level

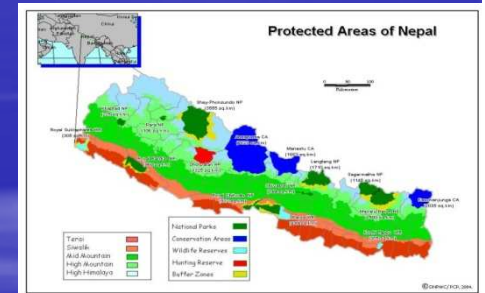


Conservation Models

- Strict protection – Park and Army
- Participatory - Buffer Zone
- Joint (NGO – Community) Management
- Community Management
- Potential for ICCAs

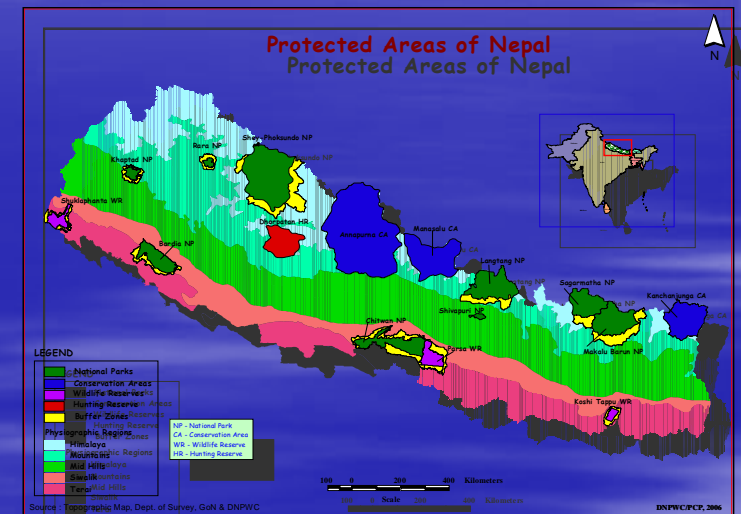
Strict Protection

- Restriction in the core area and protection by Nepal Army - NPs and WRs
- 30 – 50% of the core area revenue channeled back
- Regulated collection of grass resource in lowland PAs and timber/fuel wood/ grazing in mountain PAs



Participatory - Buffer Zone Initiative

- Buildup harmony between Park and People, and minimize pressure on park resources
- Extensive mobilization of local stakeholders to manage natural resources in BZ
- Financial resources: 30 – 50% from core area, 100% BZ income, community fund and supports form I/NGOs.
- 11 NPs and 3 WRs have BZ





Use of 30-50% Core Area Revenue

Conservation activities

**%
30**

Community development

30

Income and skill development

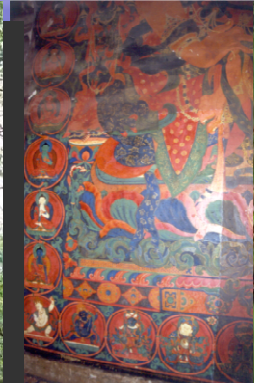
20

Conservation education

10

Administration cost

10



**Investments
US \$ 3.9 million**

Buffer Zone Institutions

PA Manager as MS &
Rep. from adjoining DDC

Buffer Zone Management
Committee (BZMC)

User Committee

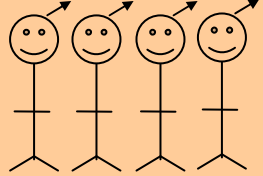
User Committee

User Committee

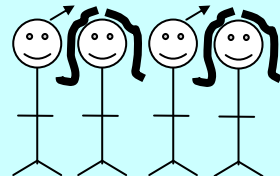
User Group

User Group

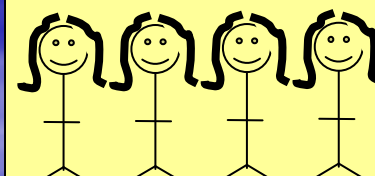
User Group



Male



Mix



Female

User Groups:
4,184

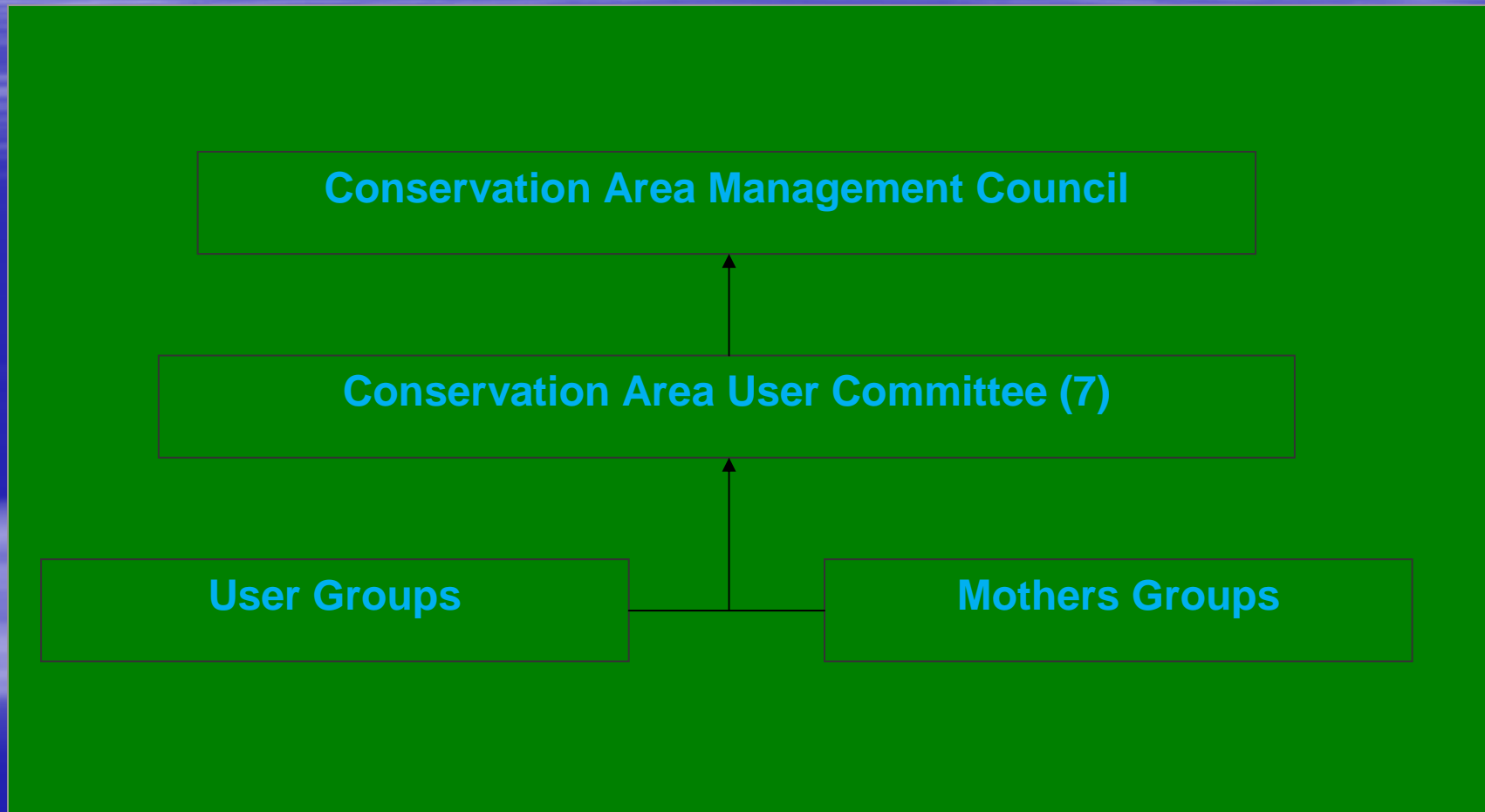
Planning

Resources

Community Institutions



Community Institutions



Potential ICCA in Nepal

- Religious forest
- Rivers and lakes
- Traditional pasture lands
including those inside PAs

**Thank you
and
NAMASTE**

