



# **BUILDING THE BRAZILIAN STRATEGY FOR 2020**

Secretary of Biodiversity and Forests – SBF  
Ministry of the Environment  
November 2013



Ministério do  
Meio Ambiente

GOVERNO FEDERAL  
**BRASIL**  
PAÍS RICO É PAÍS SEM POBREZA

# THE BRAZILIAN BIODIVERSITY

Brazil is the most biodiverse country in the world

Nº Species	Amazon	Atlantic Forest	Cerrado (Savannah)	Caatinga	Pampa	Total
Plants	13,993	18,951	13,014	4,508	1,675	<b>43,693</b>
Mammals	399	298	251	153	102	<b>701</b>
Birds	1,300	1,020	837	510	476	<b>1,832</b>
Reptiles	284	197	202	107	110	<b>721</b>
Amphibians	250	340	150	49	50	<b>875</b>
Fish	1,800	350	1.000	185	150	<b>3,000</b>
Invertebrates						<b>96,660-129,840</b>

# THE BRAZILIAN BIODIVERSITY

Brazil is one of the most important megadiversity country of the world

Taxon	Nº Species
Plants	43,693
Mammals	701
Birds	1,832
Reptiles	721
Amphibians	875
Fish	3,000
Invertebrates	96,660-129,840



# Brazilian Protected Areas System

## Legend

- State Limit
- Marine Area

### Federal Protected Areas

- Strictly Protection
- Sustainable Use

### State Protected Areas

- Strictly Protection
- Sustainable Use

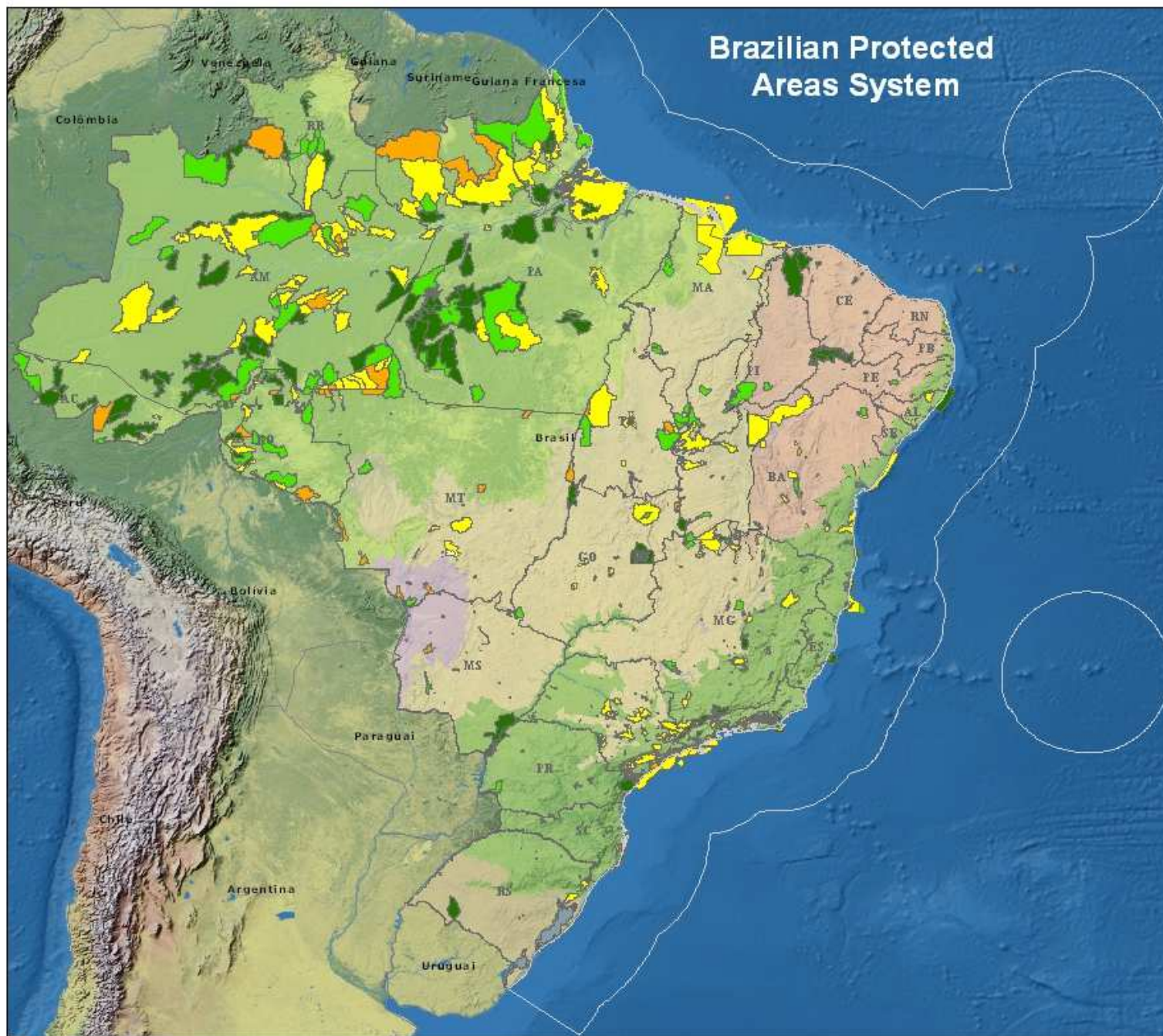
### Biome

- Amazon
- Caatinga
- Savana
- Atlantic Forest
- Pampa
- Pantanal

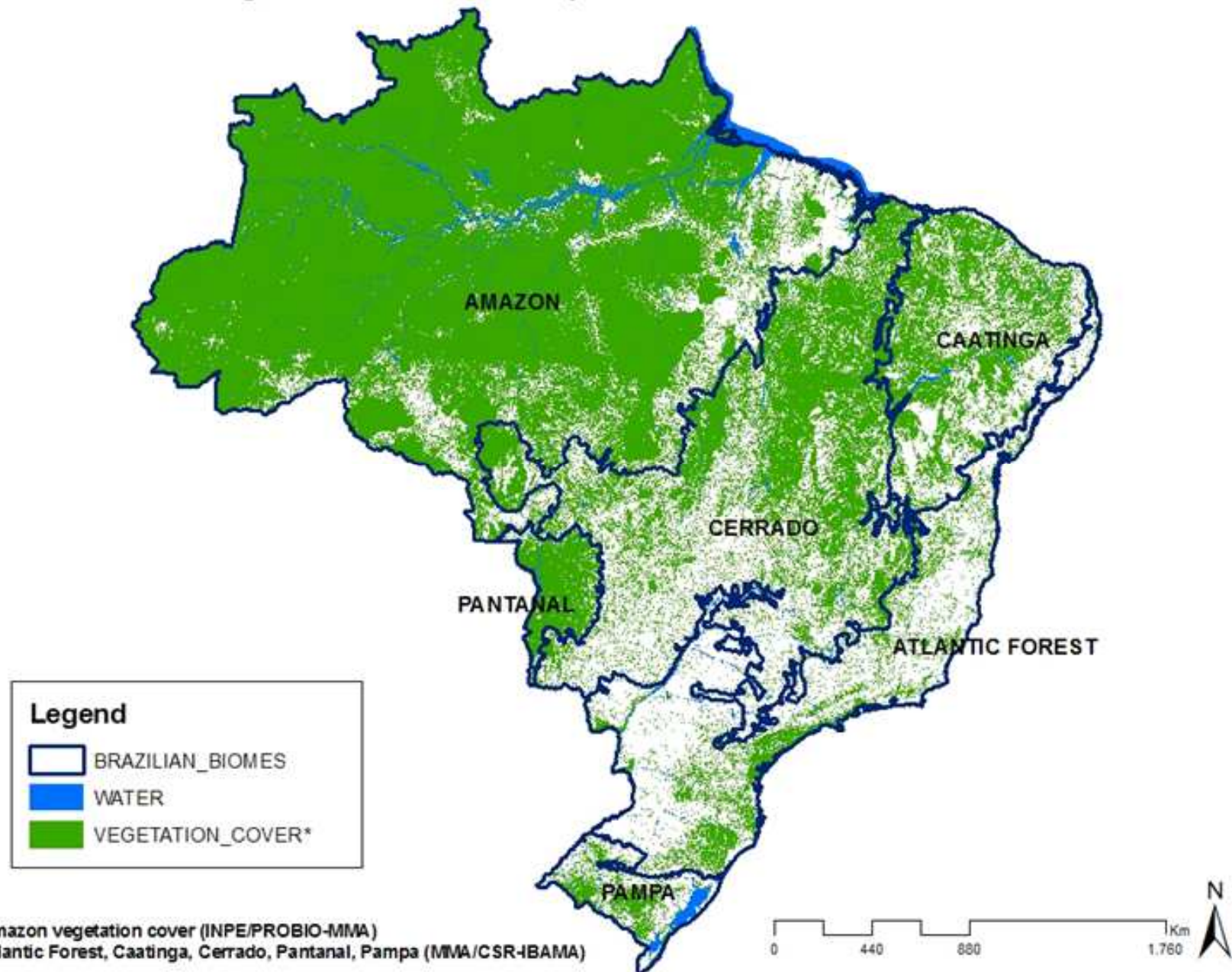
0 250 500 1.000 Km



Source: CNUC, Environmental State Agencies, IBGE  
Produced by DAP/SBF/MMA  
august 2013



## Vegetation Cover Map of The Brazilian Biomes





# **CBD STRATEGIC PLAN 2011-2020:**

## ***Strategy objective:***

Definition of national targets and effective legal instruments for the achievement of the Aichi Biodiversity Targets, as well as to update the National Biodiversity Policy.

## ***Engagement of the whole society required:***

The strategy for the internalization of the CBD Strategic Plan 2011-2020 has involved the participation of different sectors of the Brazilian society in the whole process. It has also allowed the engagement and commitment of everyone for the achievement of the Aichi Biodiversity Targets.

# CBD STRATEGIC PLAN 2011-2020:

## Dialogues on Biodiversity



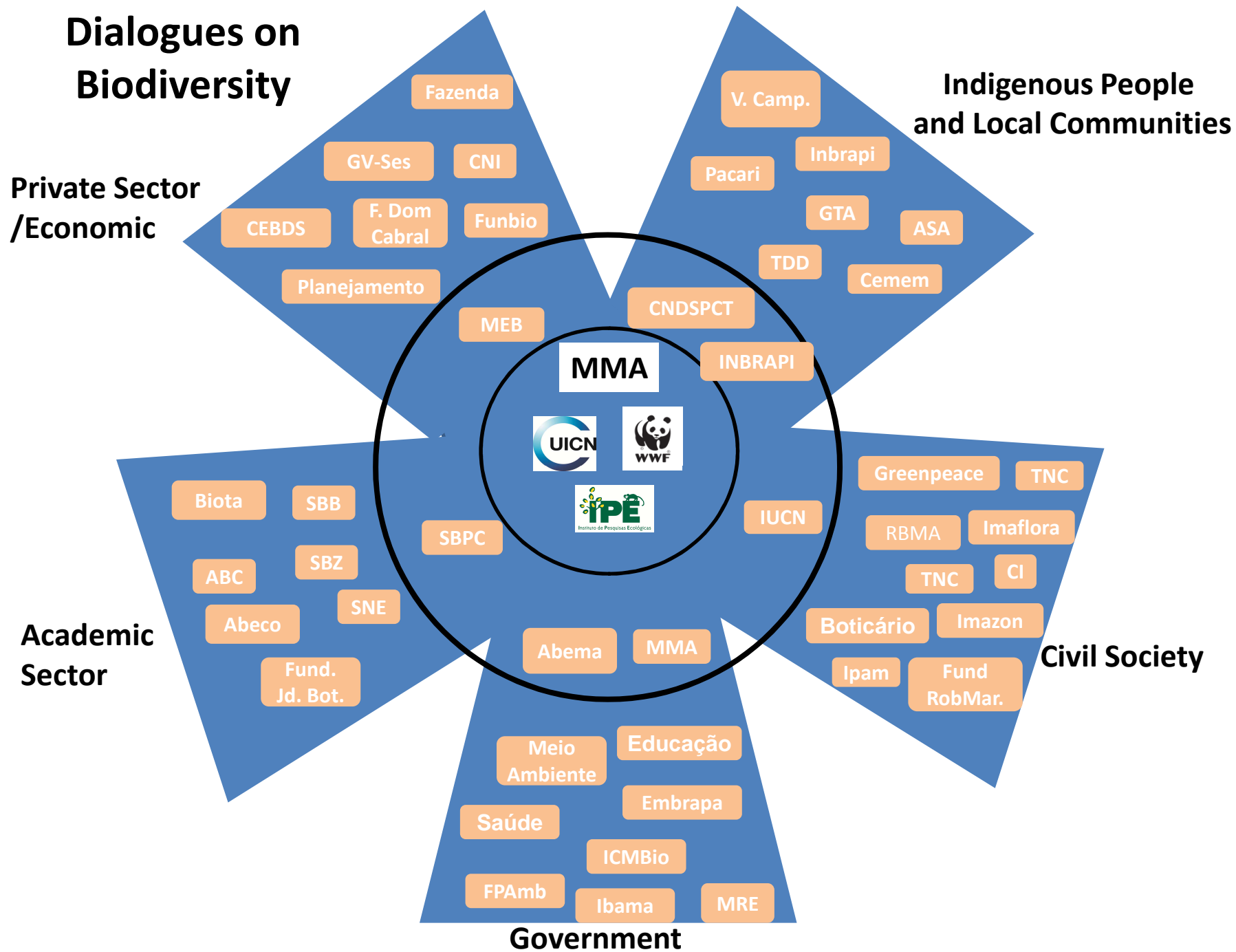
Consultation with Society for  
drawing up the National  
Biodiversity Targets

- The National Biodiversity Targets were approved by the Brazilian Biodiversity Commission (CONABIO) in September 2013

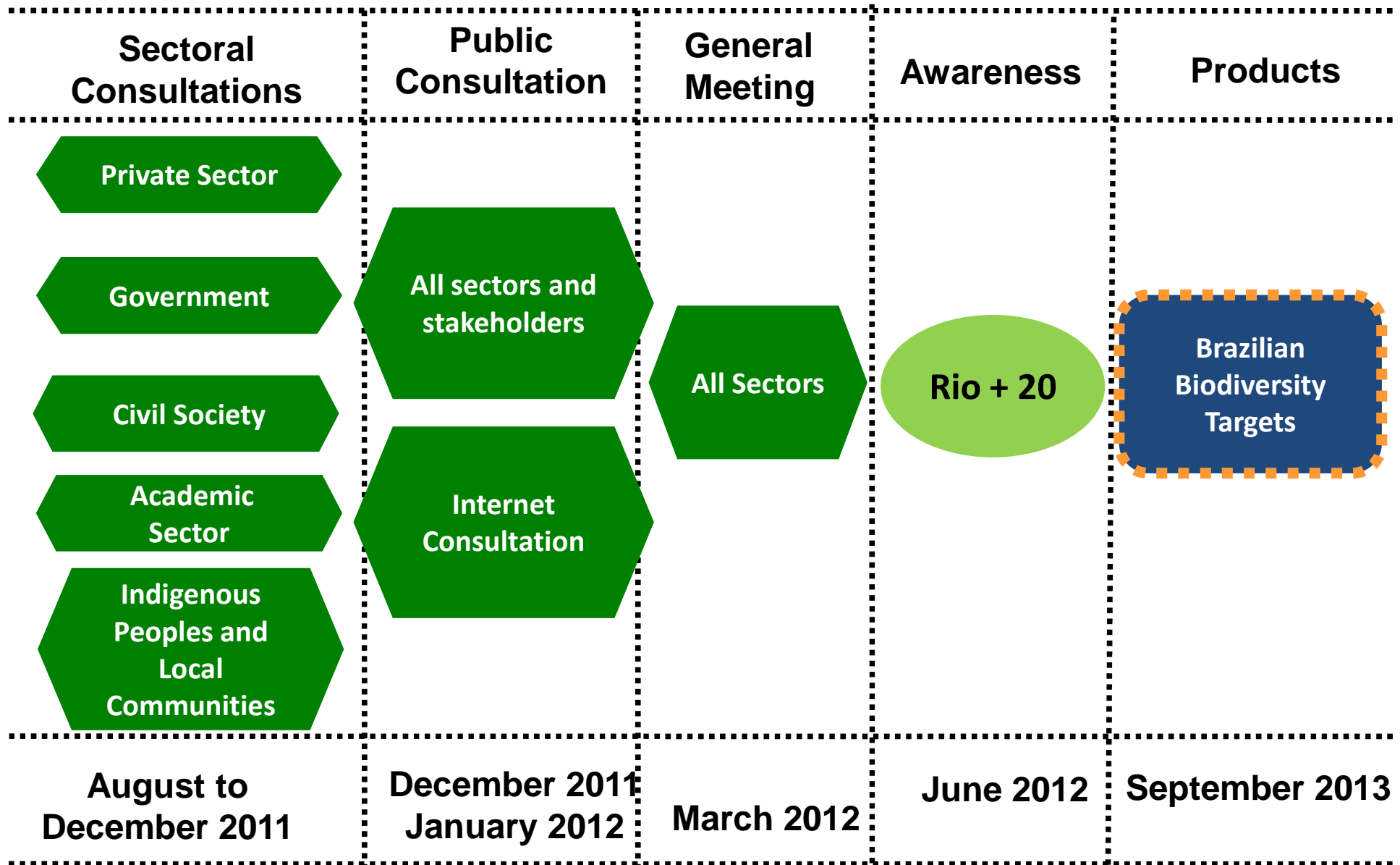
## Brazilian Action Plan for Biodiversity Conservation and Sustainable Use of Biodiversity



Detailing the  
government's actions that  
reduce the loss of  
biodiversity and its ability  
to achieve the Aichi  
Targets



# Dialogues on Biodiversity



# Dialogues on Biodiversity

- Number of participants – 280 institutions and 400 people
- Duration – approximately 2 years
- Costs - MMA - US\$ 232,000 ; DEFRA (UK) - US\$ 125,000 ; UICN – US\$ 50,000 ; TOTAL – US\$ 407,000
- Method – Seminars by sectors, biodiversity targets groups; consensus
- Partners - IUCN, IPÊ, WWF, DEFRA (UK)

# Brazilian Biodiversity Targets

- **National Target 5:** By 2020, the rate of loss of native environments will be reduced by at least 50% (**as compared to rates of 2009**) and as far as possible taken to near zero and degradation and fragmentation will be significantly reduced in all biomes.



## Brazilian Biodiversity Targets

- **National Target 9:** By 2020, the **National Strategy on Invasive Alien Species** should be fully implemented with the participation and commitment of the states and the **formulation of a National Policy**, ensuring continued and updated diagnosis of the species and the effectiveness of the Plans of Action for Prevention , Containment, Control.



# Brazilian Biodiversity Targets

- **National Target 11:** By 2020, will be preserved through conservation units under Law SNUC and other categories of officially protected areas, such as APPs, legal reserves and indigenous lands with native vegetation at least **30% of the Amazon, 17% of each of the other terrestrial biomes** and **10% of coastal and marine areas**, especially areas of particular importance for biodiversity and ecosystem services, assured and respected demarcation, regularization and effective and equitable management, aiming to ensure interconnection, integration and representation in ecological land and seascapes larger.



# Brazilian Biodiversity Targets

- National Target 19:** By 2020 the scientific, and the technologies needed for knowledge about biodiversity, its values, functioning and trends, and the consequences of its loss will have been expanded and shared, and sustainable use, the generation of technology and innovation from biodiversity will properly supported, transferred and applied. **By 2017 the complete compilation of existing records of fauna, flora and microbiota, aquatic and terrestrial, will be finalized and available in databases permanent of free access, safeguarding the specificities, in order to identify the knowledge gaps in the biomes and groups taxonomic.**



REFLORA Flora - Coleções - Herbário Virtual - Administração - Enviar Sugestões/Problemas PT - desenvolvedor

## LISTA DO BRASIL

Buscar

**Sinônimos** AUTORES SIMPLER

Sinônimos	Autores	Simpler
Machaerium heterophyllum Pr.		1
<b>Machaerium hirtum (Vell.)</b>		<b>1</b>
Machaerium hoehneanum Du.		1
Machaerium huanucoense Rudd		1
Machaerium incurtibile (Vell.)		1
Machaerium inundatum (Mart.)		1
Machaerium quitosense Macb.		1
Machaerium sadelphum (E.M.)		1
Machaerium jacarandifolium R.		1
Machaerium jobimannii C.V.		1
Machaerium juglandifolium Ru.		1
Machaerium kegelii Meisn.		1
Machaerium kuhlmanni Hoehne		1
Machaerium lanatum Tul.		1
Machaerium lanceolatum (Vell.)		1
Machaerium latifolium Rusby		1
Machaerium legale (Vell.) Ben.		1
Machaerium leucarpum Vogel		1
Machaerium leucophyllum (DC.)		4
Machaerium leucopterum Vogel		1
Machaerium lignosum Benth.		1
Machaerium ilicium Ducke		1
Machaerium lineatum Benth.		1
Machaerium longifolium Benth.		1
Machaerium longistipatum Pl.		1
Machaerium lunatum (L.f.) Du.		1
Machaerium luschianum C.		1
Machaerium macaense C.V. M.		1
Machaerium macrocarpum Be.		1
Machaerium macrocarpum Du.		1
Machaerium macrophyllum Be.		3
Machaerium maderiense Pieser		1
Machaerium marginatum Stan.		1
Machaerium marti Tul.		1
Machaerium microphyllum (E.)		1
Machaerium minutifolium Tul.		1
Machaerium mucronatum Vogel		1
Machaerium mucronulatum M.		1
Machaerium multifolium Du.		1
Machaerium muticum Benth.		1
Machaerium myrianthum Spru.		1
Machaerium nervosum Vogel		1
Machaerium nigrum Vogel		1
Machaerium nyctitans (Vell.)		3
Machaerium oblongifolium Vo.		3
Machaerium obovatum Kuhl.		1

### Machaerium hirtum (Vell.) Stehlfeld

Editar Ações

FB23059

**Informações**

**Hierarquia Taxonômica**

Flora → Angiospermas → Fabaceae Lindl. → Machaerium Pers. → Machaerium hirtum (Vell.) Stehlfeld

**Qualificações do Nome**

Status: Nome aceito Qualificador: Nome correto

**Sinônimos Relevantes**

**Tem Como Sinônimo**

heterotípico *Nissolia hirta* Vell.

**Fontes**

**Voucher**

Martius, C., s.n., NY

**Referência**

Stehlfeld, C., Tribuna Farm., 12: 132, 1944. **Obra Original**

**Forma de Vida e Substrato**

Forma de Vida: Árvore  
Substrato: Terrícola

**Distribuição**

Nativa, não é endêmica do Brasil  
Domínios Fitogeográficos: Amazônia, Caatinga, Cerrado, Mata Atlântica, Pantanal

**Descrição**

Árvores 5-20 m de alt. Estípulas espinoscentes fúsculas, não recurvadas, paralelas ou reticuladas em relação ao ramo, geralmente sobrepostas, (2-)4-7 mm compr. Folhas (23-)29-(45-)53-folíoladas; folíolos estreitamente oblongos, oblongos a oblongo-obovados, (7-)13-25 x 2-7 mm, ápice retuso a emarginado, base oblíqua, face adaxial glabrescente, face abaxial glabrescente a esparsamente sericea sobre a nervura primária. Inflorescências paniculadas; flores (12-)14-16 mm compr., pedicelo (1-)2-3 mm; cálice urceolado, 4-6 x 3-4 mm, externamente esparsamente sericeo a glabrescente; vexilo obovado, (8-)11-12 x (6-)9-10 mm, ápice retuso, base atenuada, externamente esparsamente sericeo a sericeo, internamente lílãs com mácula branca no centro; androceu monadelfo, bainha 3-6 mm compr.; ovário 4-6 mm compr., estipe 3-5 mm compr., densamente sericeo, estilete 3-5 mm compr., glabro. Sâmaras (4-)4.5-5 x 0.8-2 cm, esparsamente fulvo-tomentosas, proporção de 1:2 entre a largura do núcleo seminífero e da ala, estipe 8-12 mm.

[Download das Referências](#)

**Imagem de Campo**

**Ilustração**

# Merci!

ionai.moura@mma.gov.br



Ministério do  
Meio Ambiente

GOVERNO FEDERAL  
**BRASIL**  
PAÍS RICO É PAÍS SEM POBREZA