



WHO ARE WE AND HOW DO WE CONTRIBUTE TO MAINSTREAMING?

Sonia Peña Moreno

Maximilian Mueller

Christine Mentzel

Jackie Siles

AT THIS WORKSHOP

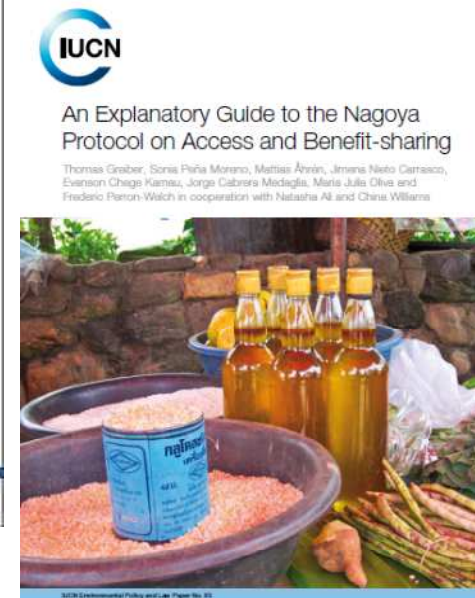
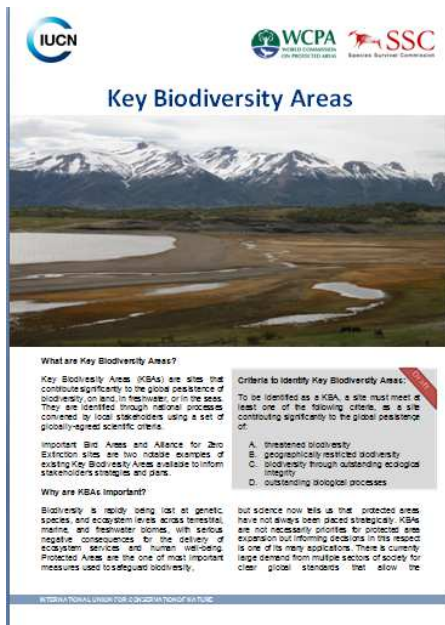
- 4 people, 4 nationalities, 4 languages, different backgrounds and experience...
- “Ambassadors” of other IUCN experts and network
- Your focal points to numerous support materials
- Ready to facilitate discussions and conversations
- “*A l’ecoute*”...





KNOWLEDGE & RESOURCES AVAILABLE

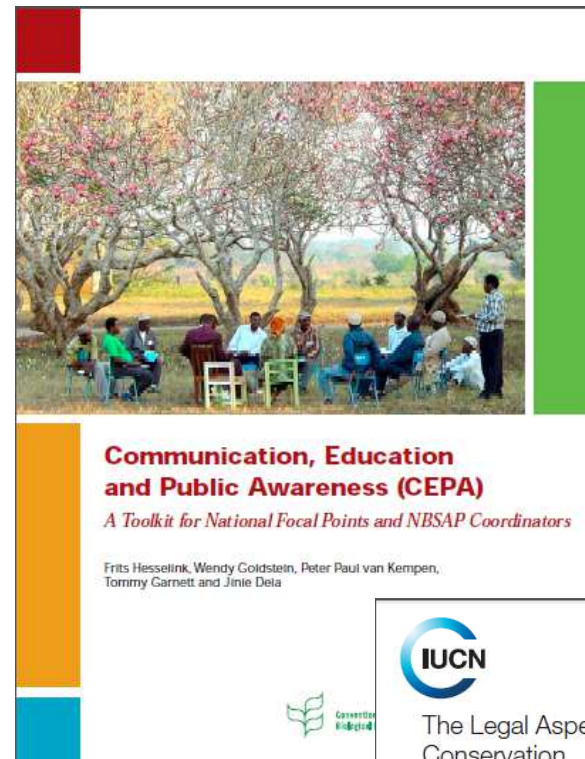
- AROUND 25 PUBLICATIONS ON DISPLAY, 15 ONLINE RESOURCES AND NUMEROUS OTHER USEFUL REFERENCES AND MATERIALS
- CONTACT DETAILS OF OUR “NBSAPS EXPERTS”





SOME EXAMPLES

- Guidelines for application of IUCN Red List Criteria at national and regional level
- CEPA: A Toolkit for National Focal Points and NBSAP Coordinators
- Biodiversity and Protected Areas Management (BIOPAMA) Programme
- Food security policies: making the ecosystems connections
- Legal guidance, legislation assessment
- Gender mainstreaming materials and work



The Legal Aspects of Connectivity Conservation A Concept Paper

Barbara Laveche, David Farrier,
Jonathan Vierschauer, Antonio G. M. Le Wai,
Ana Travençolo, Charles Hubert Barn, Lorraine Aug

Project Director: François Durbanne



IUCN Environmental Policy and Law Paper No. 55 - Volume 1





The Global Invasive Alien Species Information Partnership

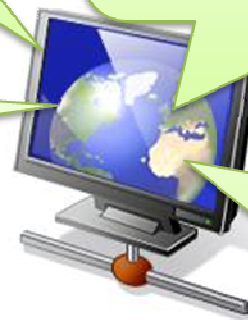
has come together to assist Parties to achieve Aichi Biodiversity Target 9

Better decision making

Better pathway management

Better awareness

Better socio-economic development



Partners

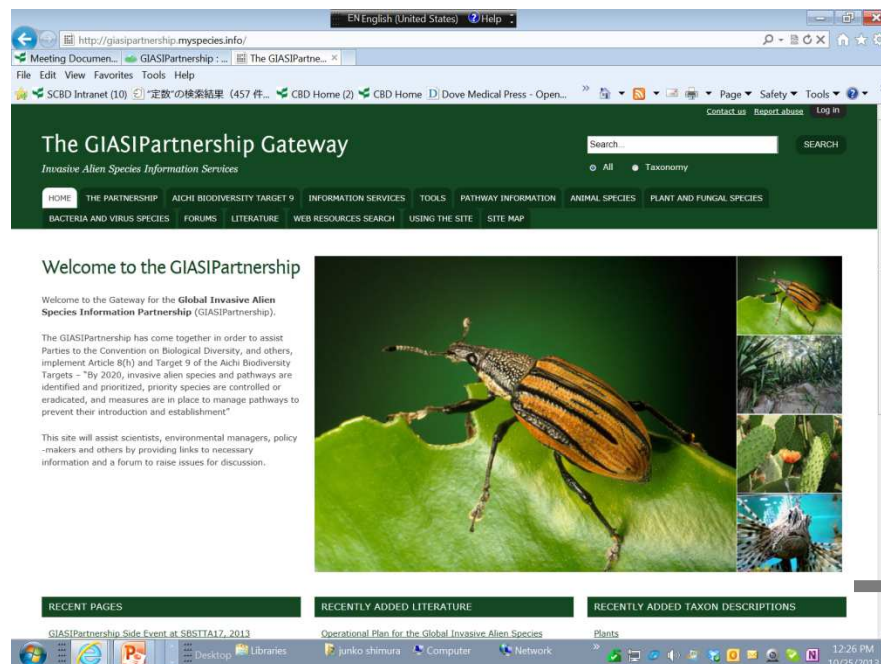
- All Parties to the Convention of Biological Diversity (CBD)
- CAB International
- International Union for Conservation of Nature (IUCN)
- Invasive Species Specialist Group of the IUCN Species Survival Commission
- FishBase Information and Research Group
- Global Biodiversity Information Facility (GBIF)
- Muséum National d'Histoire Naturelle (Paris, France)
- Natural History Museum, UK (NHM)
- The Horus Institute for Environmental Conservation and Development (Brazil)
- The Asia-Pacific Forest Invasive Species Network (APFISN)
- Anatrack Ltd



**Convention on
Biological Diversity**



Partnership Products & Activities



Information Gateway

<http://giasipartnership.myspecies.info/>

Partners

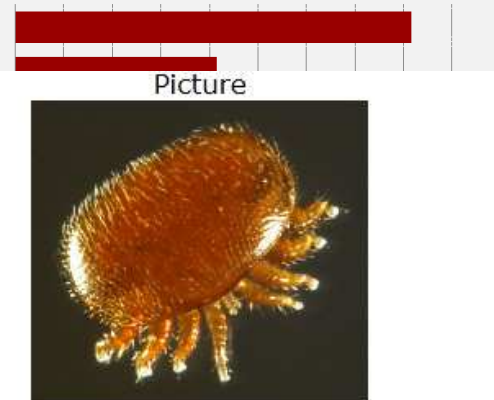
- All Parties to the Convention of Biological Diversity (CBD)
- CAB International
- International Union for Conservation of Nature (IUCN)
- Invasive Species Specialist Group of the IUCN Species Survival Commission
- FishBase Information and Research Group

- Global Biodiversity Information
- Muséum National d'Histoire Naturelle
- Natural History Museum, UK
- The Horus Institute for Environmental Conservation and Development (Brazil)
- The Asia-Pacific Forest Invasive Species Network (APFISN)
- Anatrack Ltd

Examples of analysis and assessments

Analysis of pathways from GISD data

Horticulture
Pet/aquarium species
Agriculture
Transportation
Ship/boat ballast
Landscape/flora
Ship/boat hull
Food contact



click on the picture for further information



click on the map for further information

Convention on
Biological Diversity



Friends of Target 12

A partnership to prevent species extinctions



Aichi Biodiversity Target 12: *By 2020 the extinction of known threatened species has been prevented and their conservation status, particularly of those most in decline, has been improved and sustained.*

Aim: to support CBD Parties and others to achieve Target 12 by:

- Synthesising practical guidance and experience
- Sharing information on initiatives and programmes
- Promoting collaborative efforts and synergies
- Identifying key challenges and solutions

To know more visit: www.iucn.org/friendsoftarget12

Friends of Target 12

