



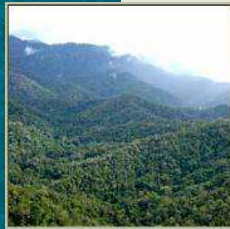
**THE ITTO THEMATIC PROGRAMME ON
REDUCING DEFORESTATION AND
FOREST DEGRADATION AND
ENHANCING OF ENVIRONMENTAL
SERVICES**



Montreal, 8-10 July

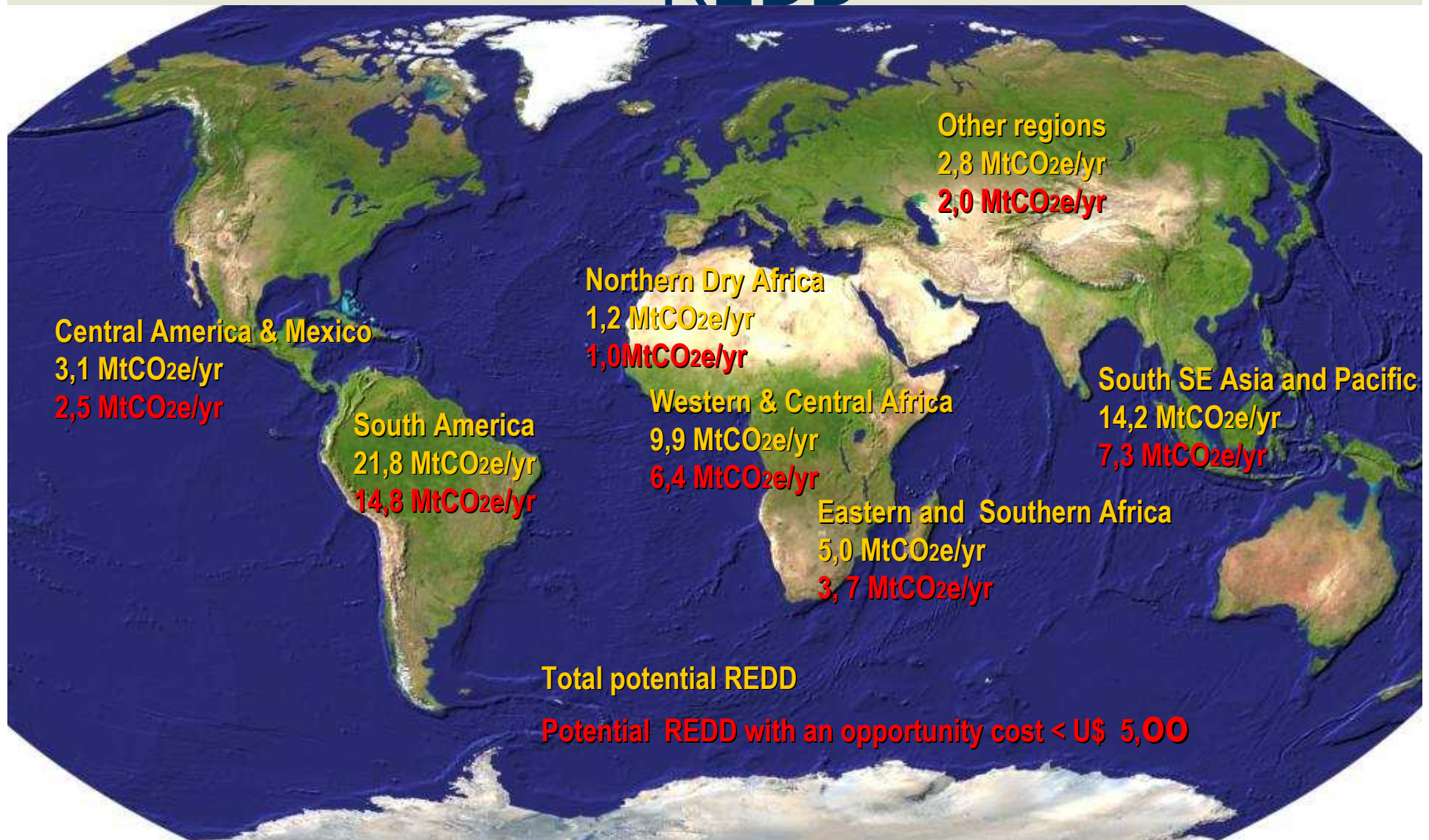
2009

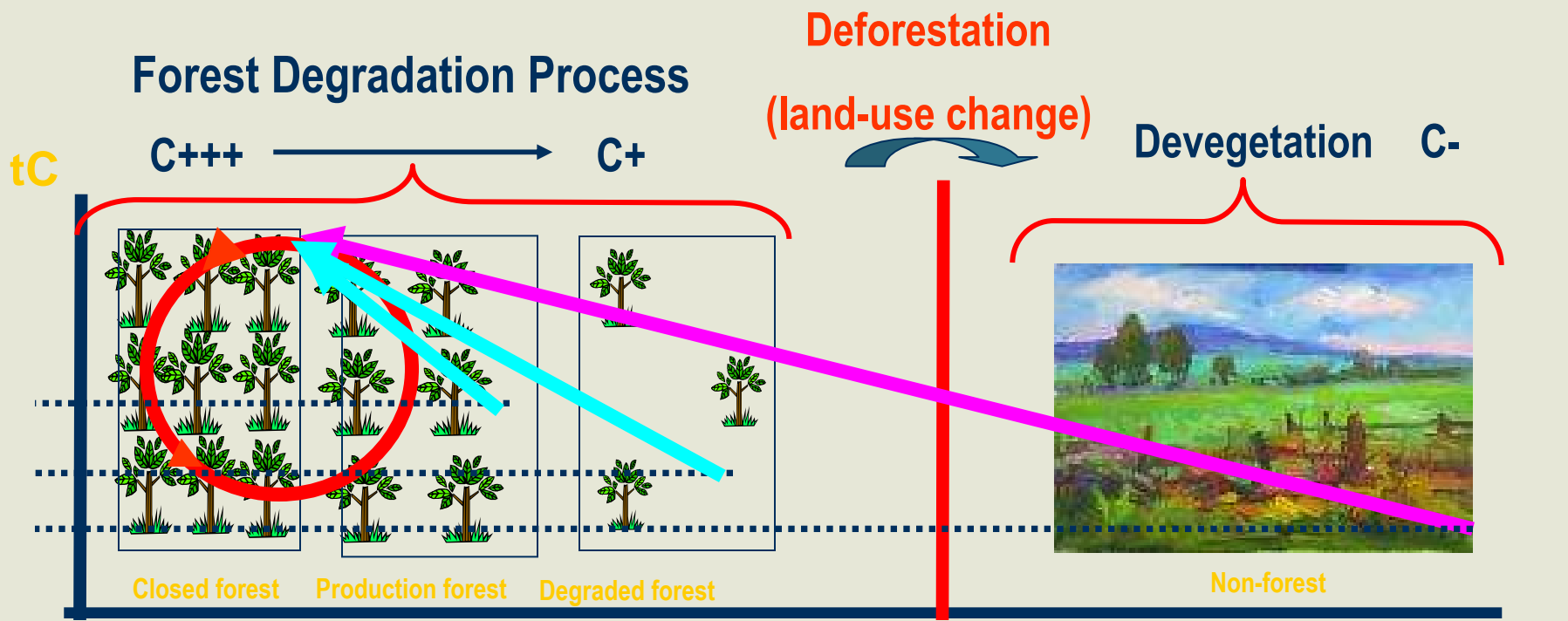
INTERNATIONAL TROPICAL TIMBER ORGANIZATION



Climate change, biodiversity conservation and other ecosystem services

Reducing Emissions from Deforestation and forest Degradation – REDD –





- Sustainable use of existing forest: years
REDD → 3.76 GtCO₂e per year, about 77 GtCO₂e until 2030
SFM → 6.6 GtCO₂e until 2030
- Forest Restoration: Carbon enhancement in REDD+
→ estimated at 117 GtCO₂e up to 2030
- Plantations & Agroforestry: Carbon sequestration
→ included in A/R CDM
→ min. 18.7 GtCO₂e up to 2030
- Substitution: Potential in bioenergy is uncertain
 Substitution through wood is not accountable yet

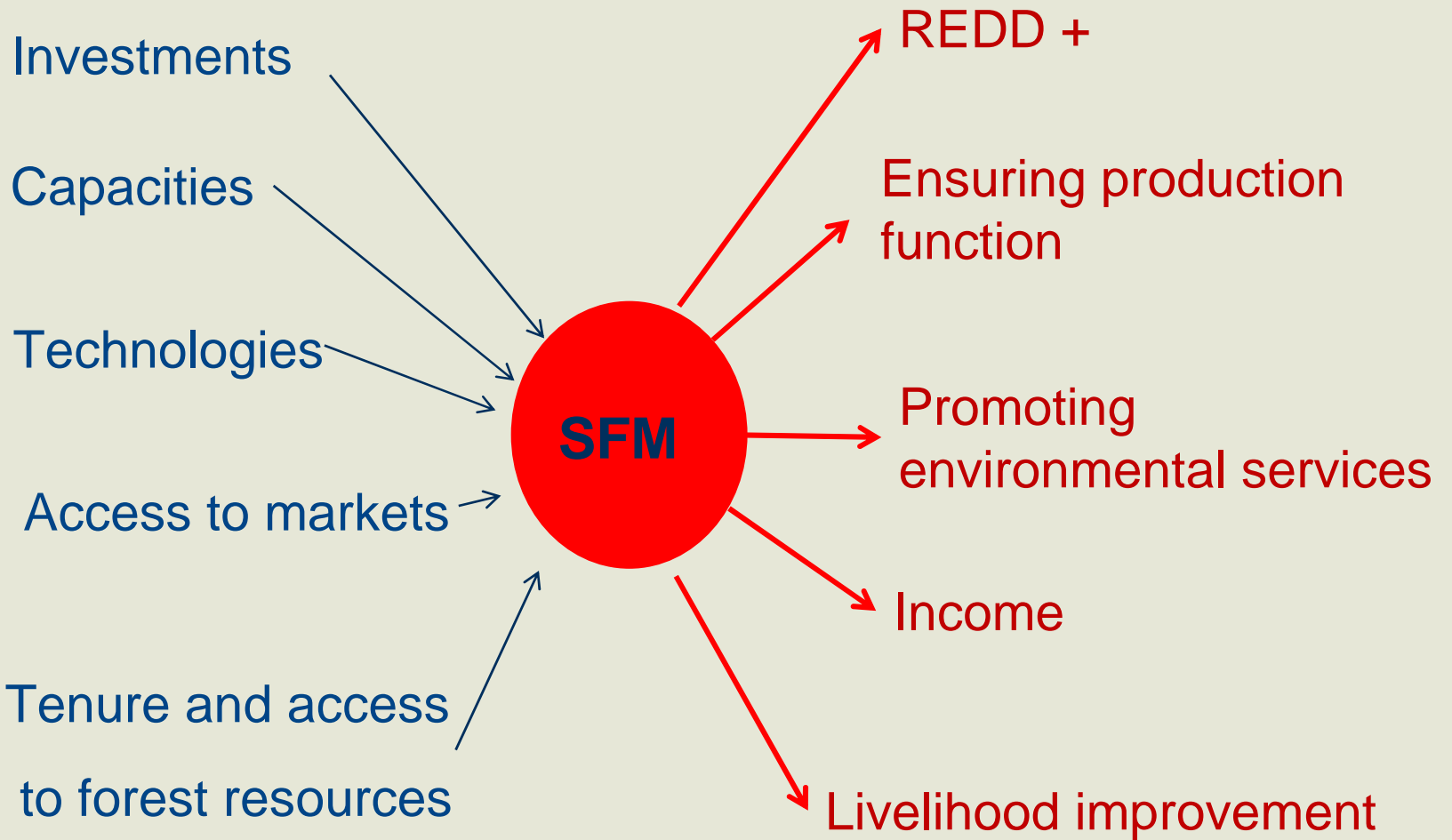
**Promoting
Environment
Services**

**Forest, climate
change resilience and
Disaster Risk
Reduction**

SFM

**Reducing
Deforestation and
Forest Degradation**

**Improving living conditions
Creating sustainable income**





The answer from ITTO



Before 2008



- Pilot projects
- Capacity Building
- Promoting experts exchange
- Consideration of UNFCCC in the ITTO Council

REDDES

**REDUCING DEFORESTATION AND FOREST
DEGRADATION AND ENHANCING
ENVIRONMENTAL SERVICES IN TROPICAL FORESTS**



Core Problem to Be Addressed:

Prevention and reduction of deforestation and forest degradation

Key factors:

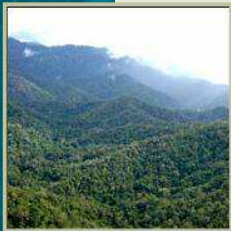
Deforestation – extra sectoral drivers

Degradation – unsustainable forest utilization

Undervaluation of forest environmental services

REDDES

REDUCING DEFORESTATION AND FOREST DEGRADATION AND ENHANCING ENVIRONMENTAL SERVICES IN TROPICAL FORESTS



General objective: To **reduce deforestation and forest degradation, enhance environmental services** and help **improve** forest dependant **livelihoods** through sustainable management of tropical forests, forest restoration and other related activities.

Specific objective : To **strengthen the capacity** of ITTO developing member countries and their stakeholders to:

- reduce unplanned deforestation
- reduce forest degradation
- maintain and enhance climate change mitigation and other environmental services of tropical forests; and
- contribute to the social and economic sustainability of forest-dependent communities by increasing forest values through forest restoration and rehabilitation as well as payments for forest-based environmental services .

REDDES

REDUCING DEFORESTATION AND FOREST DEGRADATION AND ENHANCING ENVIRONMENTAL SERVICES IN TROPICAL FORESTS

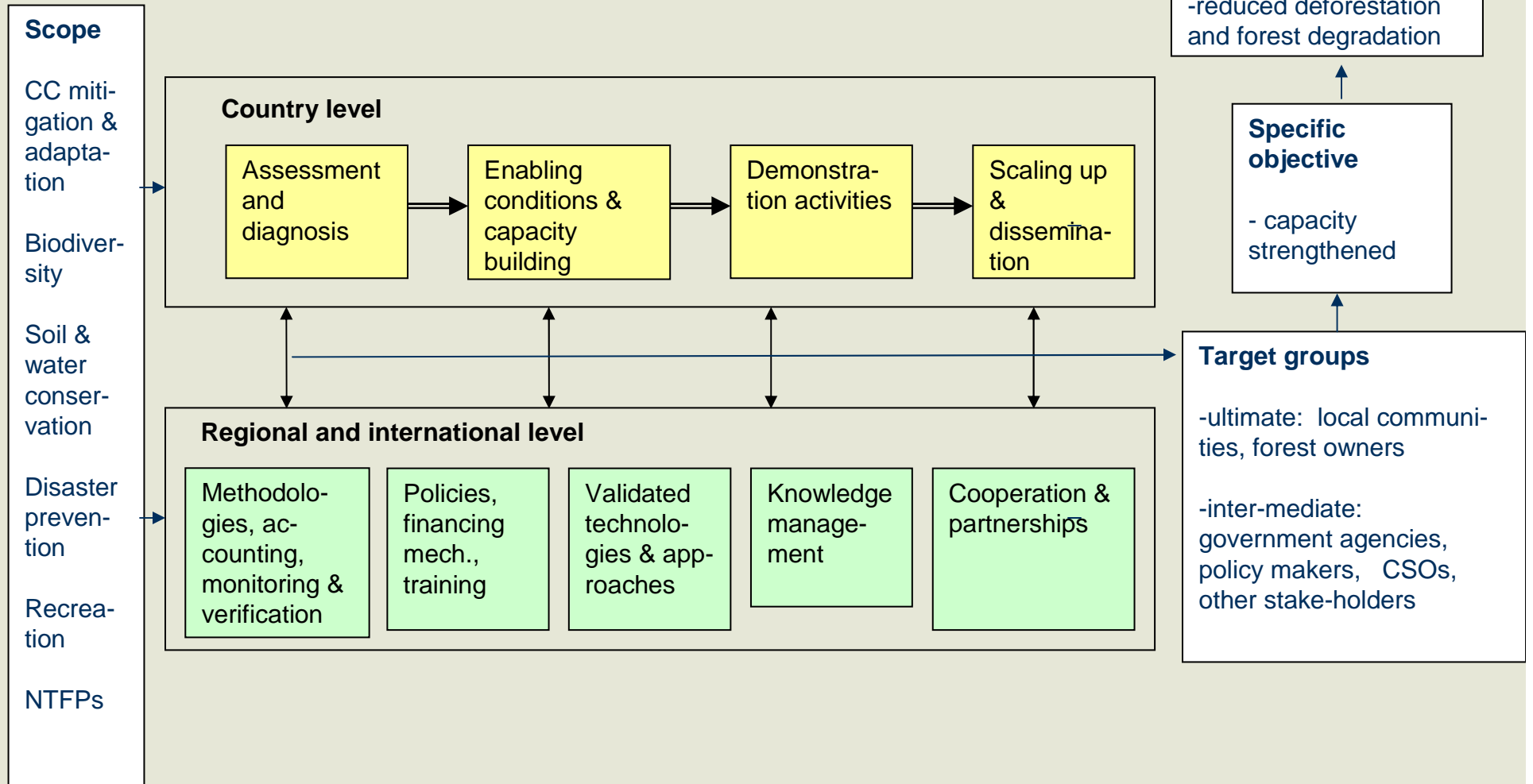


Expected outcomes:



- **Reduced deforestation and forest degradation & increased area of forest under sustainable management** in tropical timber producing forest
- **Improved livelihoods** for forest dwellers and other stakeholders directly involved in the supply of environmental services through the sustainable management of tropical forests
- Improved **resilience of tropical forest ecosystems and forest-dependent communities**
- Improved **capacities to develop and implement policies** and incentive mechanisms to promote environmental services through sustainable forest management
- Improved practices to promote **community involvement** in the supply of environmental services from SFM

REDD+ Programme Strategy



Added Value of REDDES



- **Complementarity** to other initiatives in REDD
- **Comprehensive approach** covering all environmental services
- Focus on **SFM** in reducing deforestation and degradation, particularly the “**second D**”
- In capacity building the focus on **FMU/local implementation** to deliver climate and other environmental benefits (upfront support)
- Focus on **demonstration** (ref. Bali Action Plan)
- Country experience on **payment schemes for ES**
- **Geographic coverage** (incl. countries not covered by other initiatives)
- ITTO’s **comparative advantage**: more than 300 projects, guidelines, training, etc.

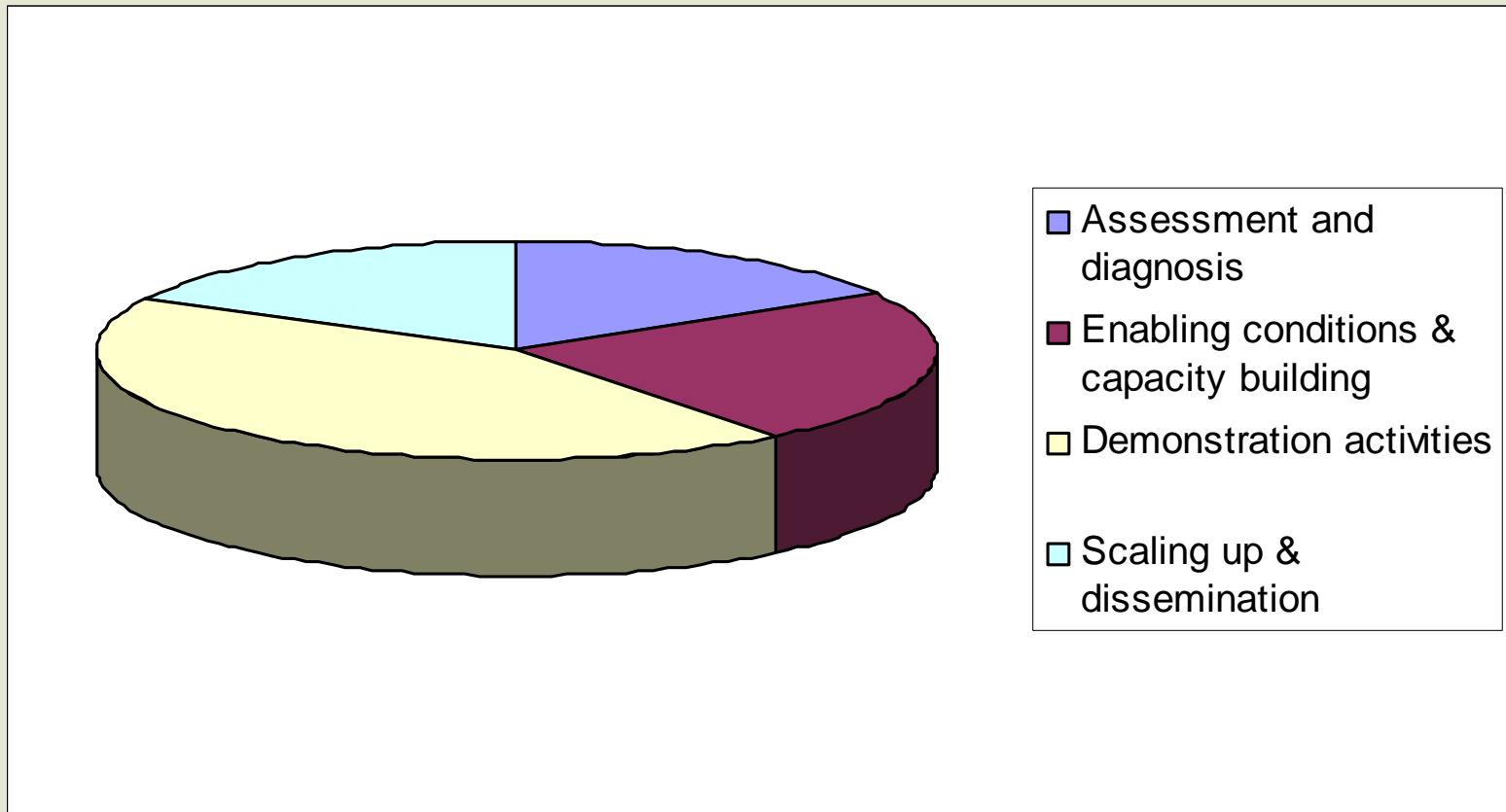
Partnerships in Support to Countries

- CPF Strategic Framework on F&CC
- UN-REDD
- FCPF and FIP
- Other initiatives

- Coordinated pilot country approaches
- Harnessing synergies
- SFM, restoration, rehabilitation of degraded forests

COUNTRY LEADERSHIP

REDDES Budget Breakdown



Total budget: USD 18 million

Already pledged: US\$ 3.5 million (19.4% of the total budget)

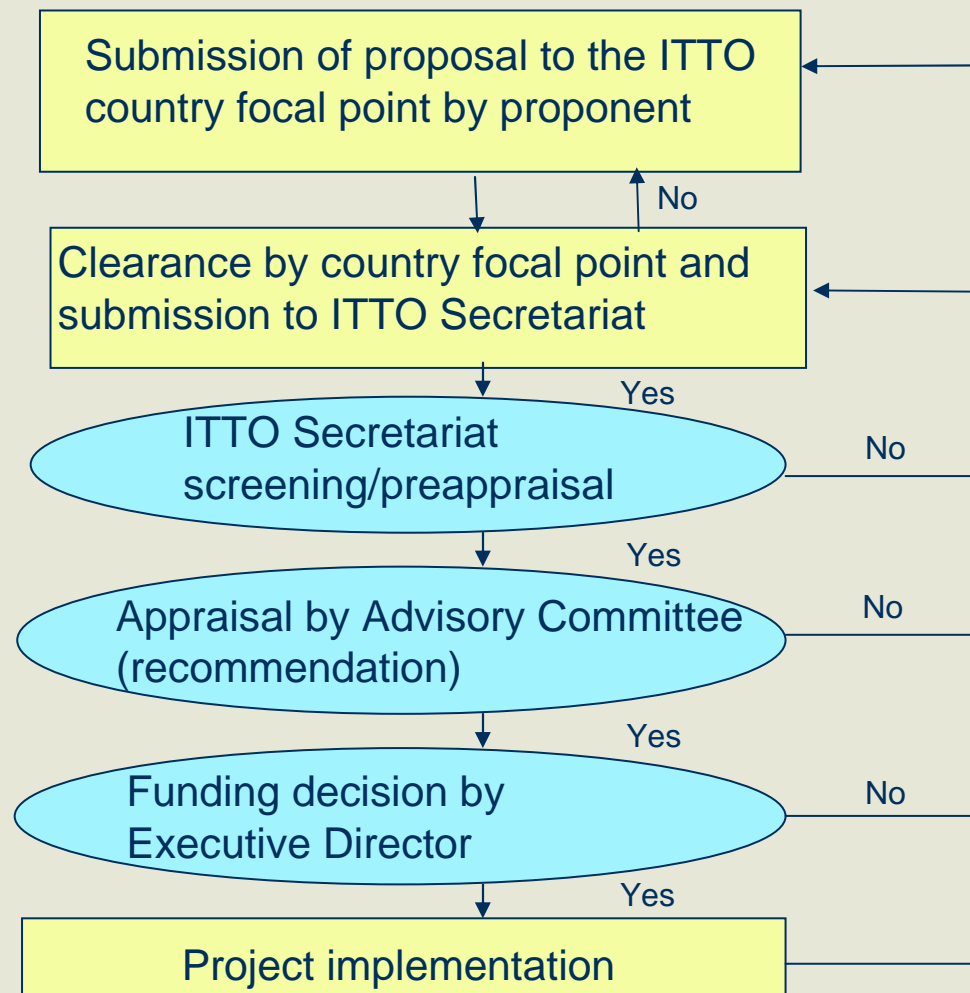
REDDES General Work Plan 2009-2011

Actions	Year 1				Year 2				Year 3			
1. Programme launching & promotion												
2. Calls for proposals	•		•		•		•		•		•	
3. Advisory Committee meetings	•	•		•		•		•		•		•
4. Country programming												
- Country 1												
- Country 2												
- Country 3												
5. Implementation of TP activities												
- A. Assessment and diagnosis												
- B. Enabling conditions and capacity building												
- C. Demonstration projects												
- D. Scaling up and dissemination												
6. Annual monitoring reports				•				•				•
7. Review and evaluation by ITTC												•

How Does the Thematic Programme Operate?



- TPs finance approved project/preproject and activity **proposals submitted by stakeholders** in the ITTO member countries
- **Calls** for proposals
- Assessment and **approval process**
- Implementation and monitoring **arrangements**
- Secured initial **funding** before the TP is started, further fundraising during the implementation



Approval Process of Submissions

The process is expected to take max. 6 months

Some previous pilot experiences of ITTO



San Nicolas project in Colombia (1999 – 2009)



- Participation of civil society, private sector and state
- Methods on quantifying and monitoring changes in carbon stocks and other environmental services
- Carbon payments for conservation, reforestation and afforestation already negotiated



Meru Betiri National Park, Indonesia (Initiated in 2008)



- Mainly financed by the private sector through ITTO
- Institutional setting for prevention of DD and biodiversity conservation developed
- Robust and sound system for accounting changes in forest carbon

- Capacity building activities

For discussion in Montreal



- Are there synergies between REDD, REDDES and the ongoing programmes in the regional organizations?
- How to support other regional organizations?
- How to promote participation from your regions in REDDES?



THANK YOU FOR YOUR ATTENTION!
http://www.itto.int/en/calls_proposals/



Carmenza Robledo, Intercooperation
Carmenza.robledo@intercooperation.ch

INTERNATIONAL TROPICAL TIMBER ORGANIZATION