



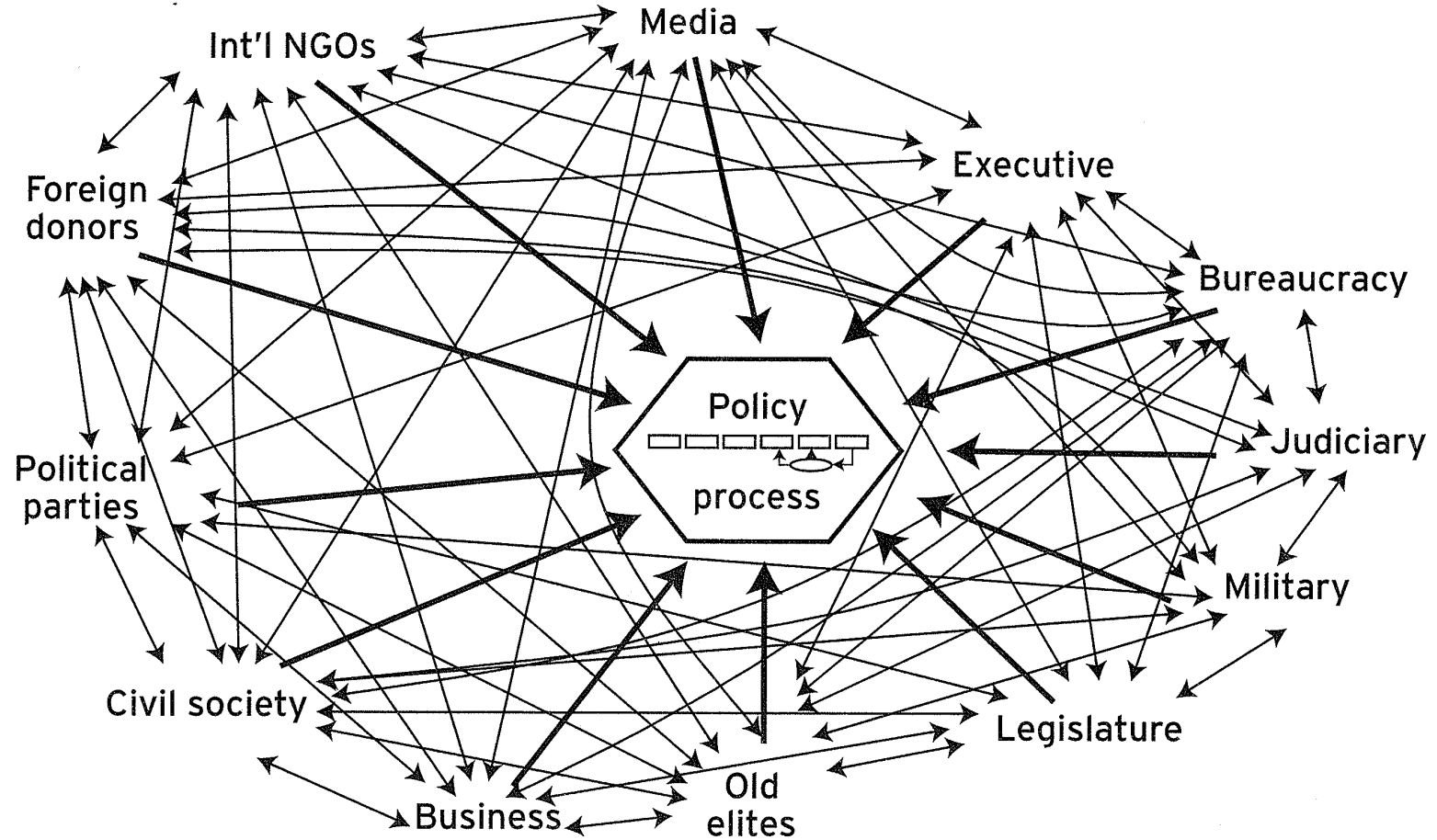
Netherlands Commission for
Environmental Assessment

SEA for biodiversity

Mainstreaming biodiversity in strategic planning

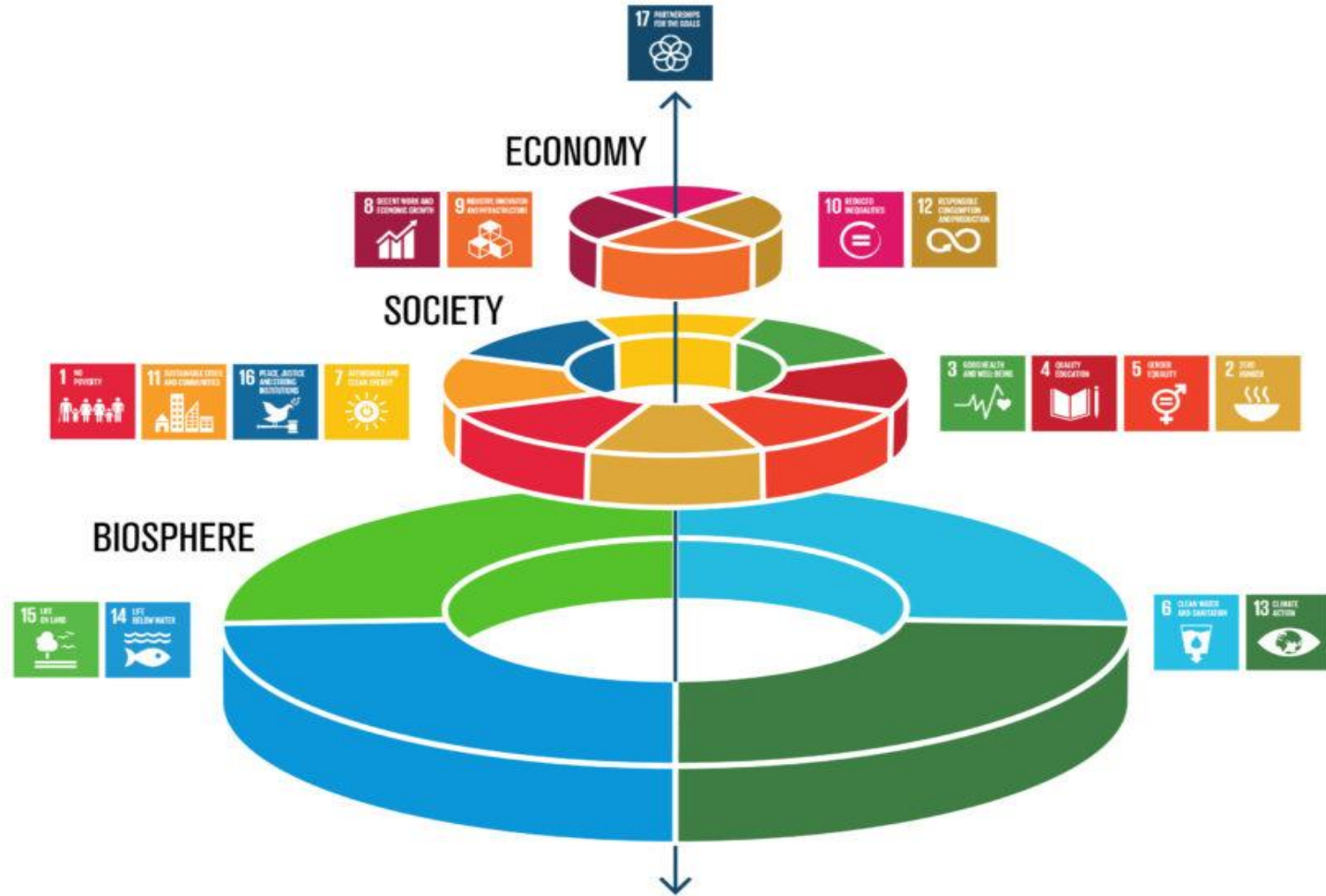
Rob Verheem December 11 2017

Mainstreaming in strategic planning



ref: Blair, 2008






Graphics by Jerker Lohvanta/Alamy




Instruments for mainstreaming: EIA & SEA


Commission for Environmental Assessment



CBD



Ramsar




CMS

IAIA - CBBIA

Biodiversity in EIA & SEA


Background Document to CBD Decision VIII/28:
Voluntary Guidelines on Biodiversity-Inclusive
Impact Assessment



ecosystems species genes

conservation

sustainable



Review of the success of the guidelines

Increasing role of EIA to mainstream biodiversity

However, some significant gaps: alternatives, cumulative effects

Growing importance of SEA to complement EIA



2017 side event on SEA

CBD secretariat initiative

Request to NCEA to organise



What is the NCEA?

EIA & SEA knowledge centre

Established by, but independent of Dutch government

EIA & SEA quality review in the Netherlands since 1987

EIA & SEA support to low & middle income countries since 1993

100% subsidised by Dutch government; no commercial services



SEA: State of the Art

Started in the 60's

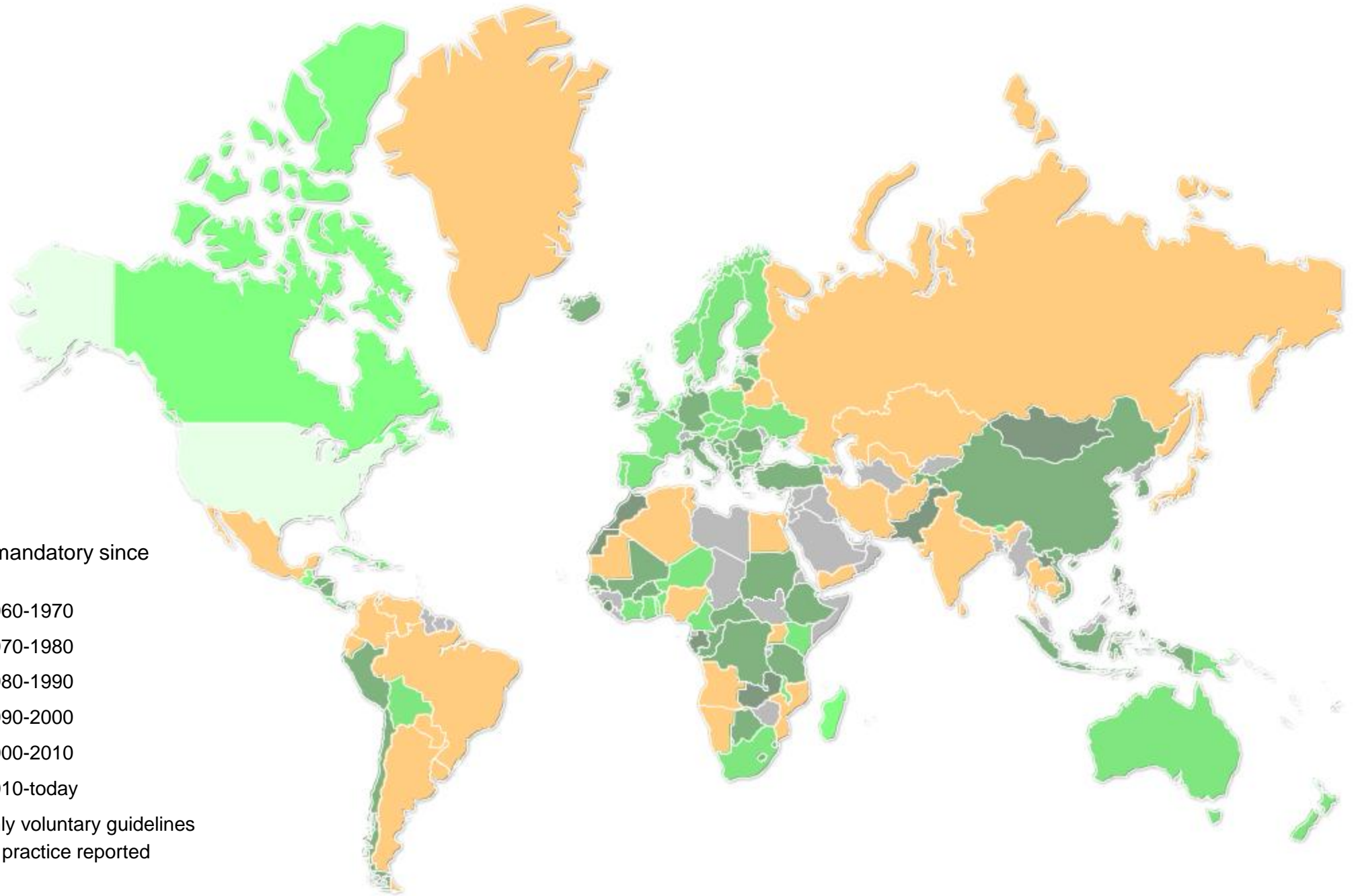
Now mandatory in all high income countries

Rapid growth in low & middle income countries

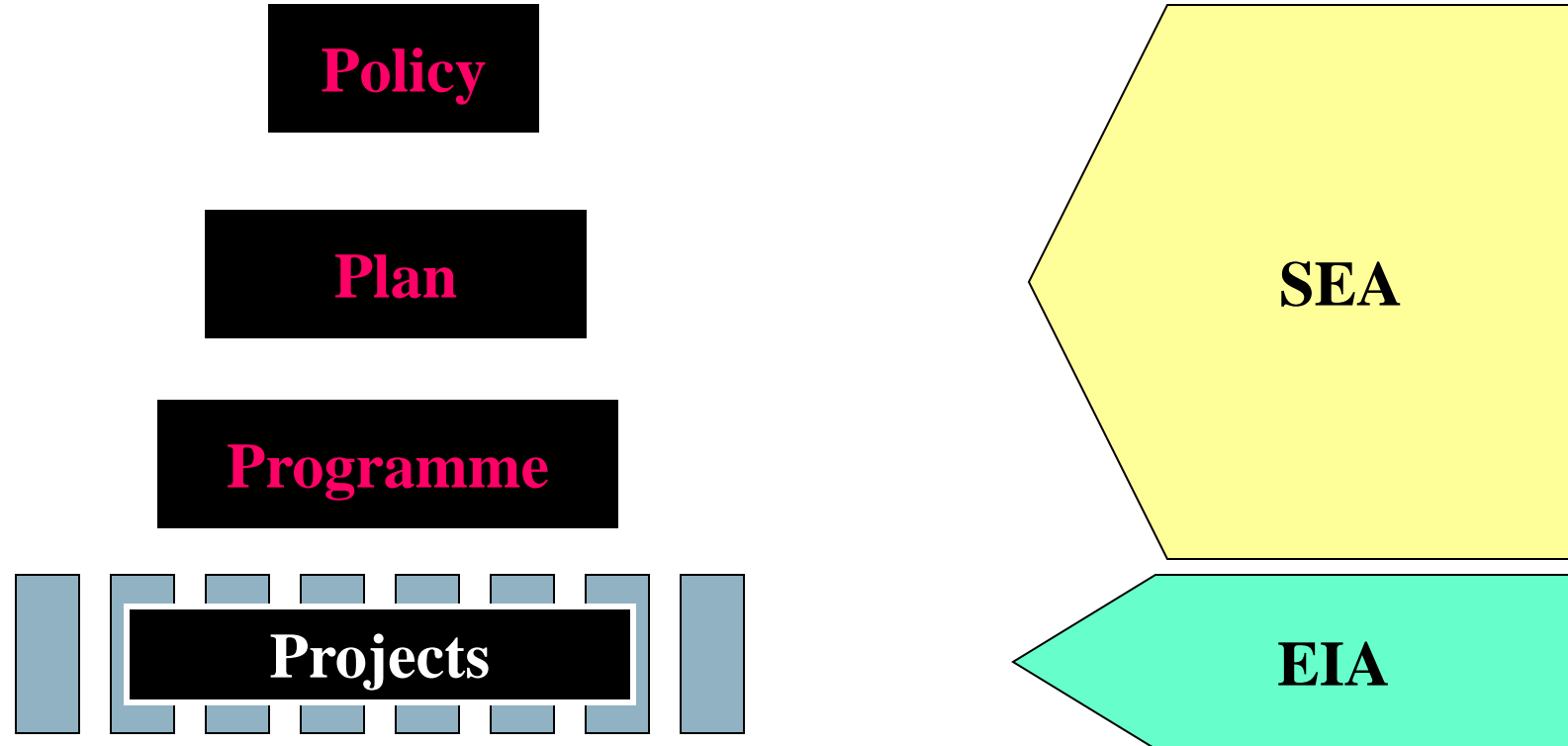


SEA mandatory since

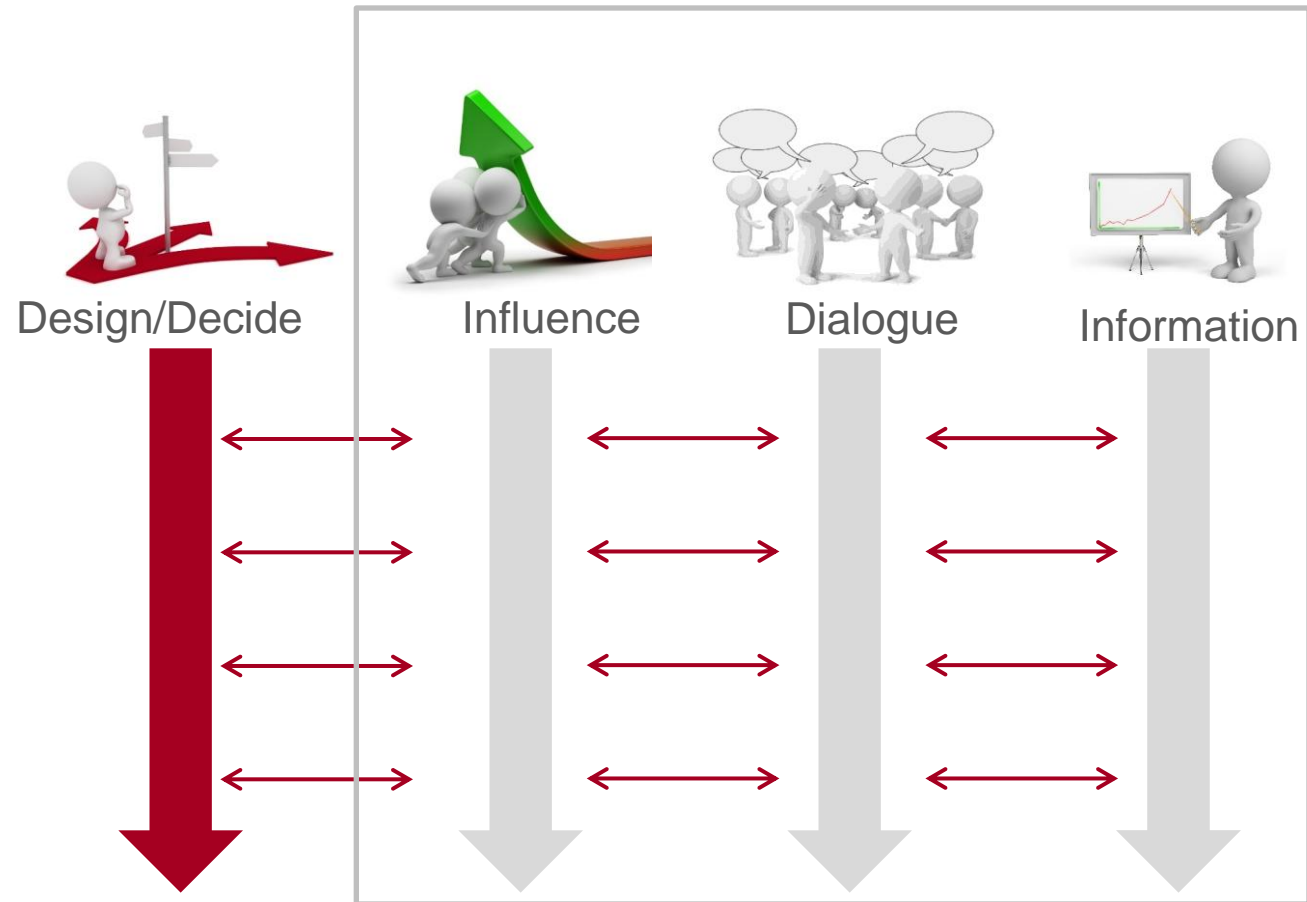
- 1960-1970
- 1970-1980
- 1980-1990
- 1990-2000
- 2000-2010
- 2010-today
- only voluntary guidelines
or practice reported



SEA complements EIA



The essence of SEA



Added value of SEA to planning

Better informed plan process

More transparent and inclusive plan process

More effective influencing of decision making



Added value of SEA for biodiversity

Mainstreams biodiversity at higher/landscape level (alternatives)

Assesses cumulative effects of multiple projects

Clarifies relationships, e.g.

- between ecosystem services & livelihoods/employment

SEA provides a *legal* basis for biodiversity mainstreaming



Examples

Roel: SEA for mining & SEA for infrastructure

Asha: SEA for energy



Discussion

*What could be next steps
to strengthen biodiversity-inclusive SEA
that SBSTTA could recommend to CoP?*

