

Marine indicators and monitoring

for the Global Biodiversity Framework

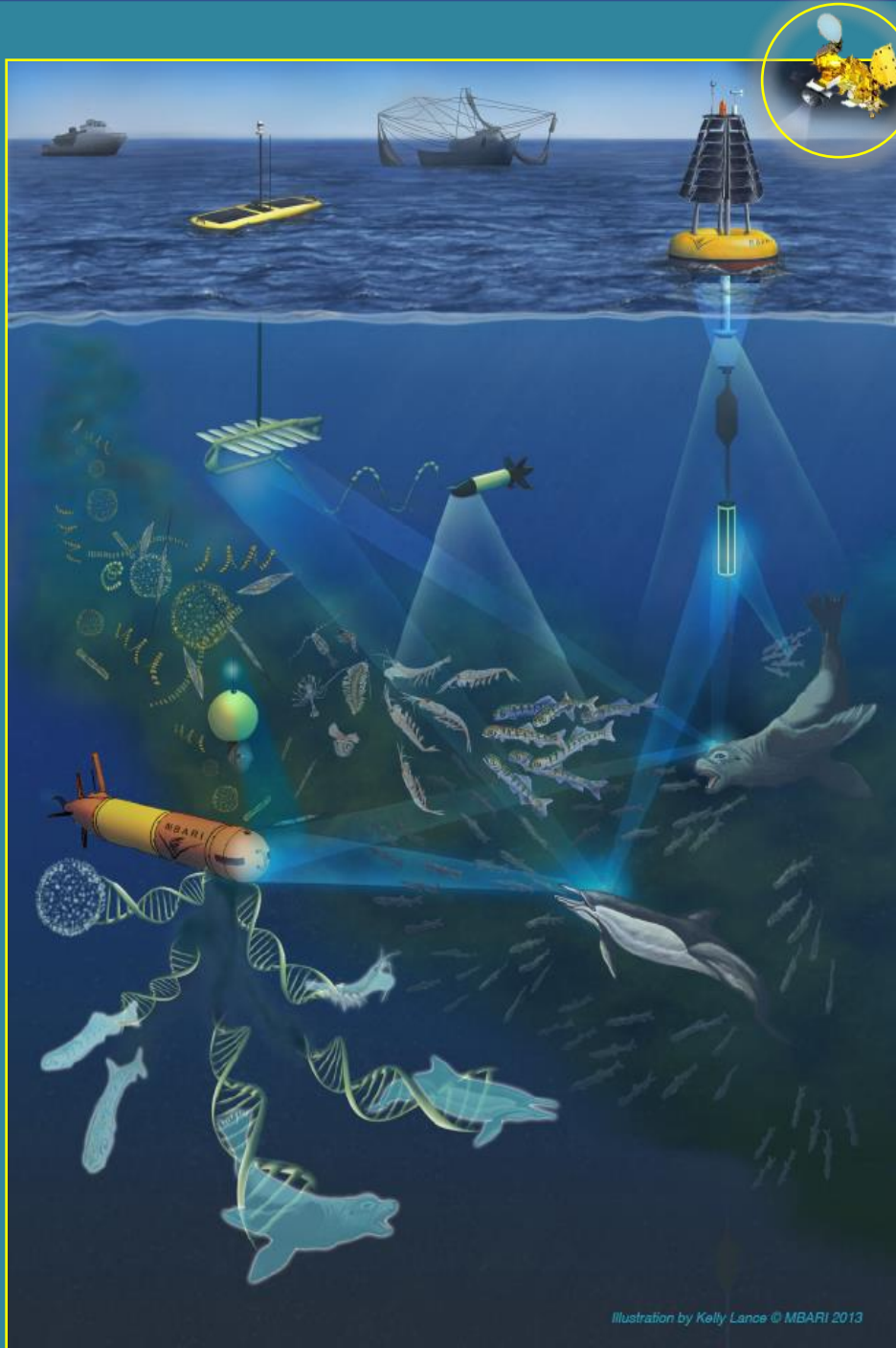
David Obura

CORDIO East Africa, Kenya

dobura@cordioea.net

www.cordioea.net





GEO BON

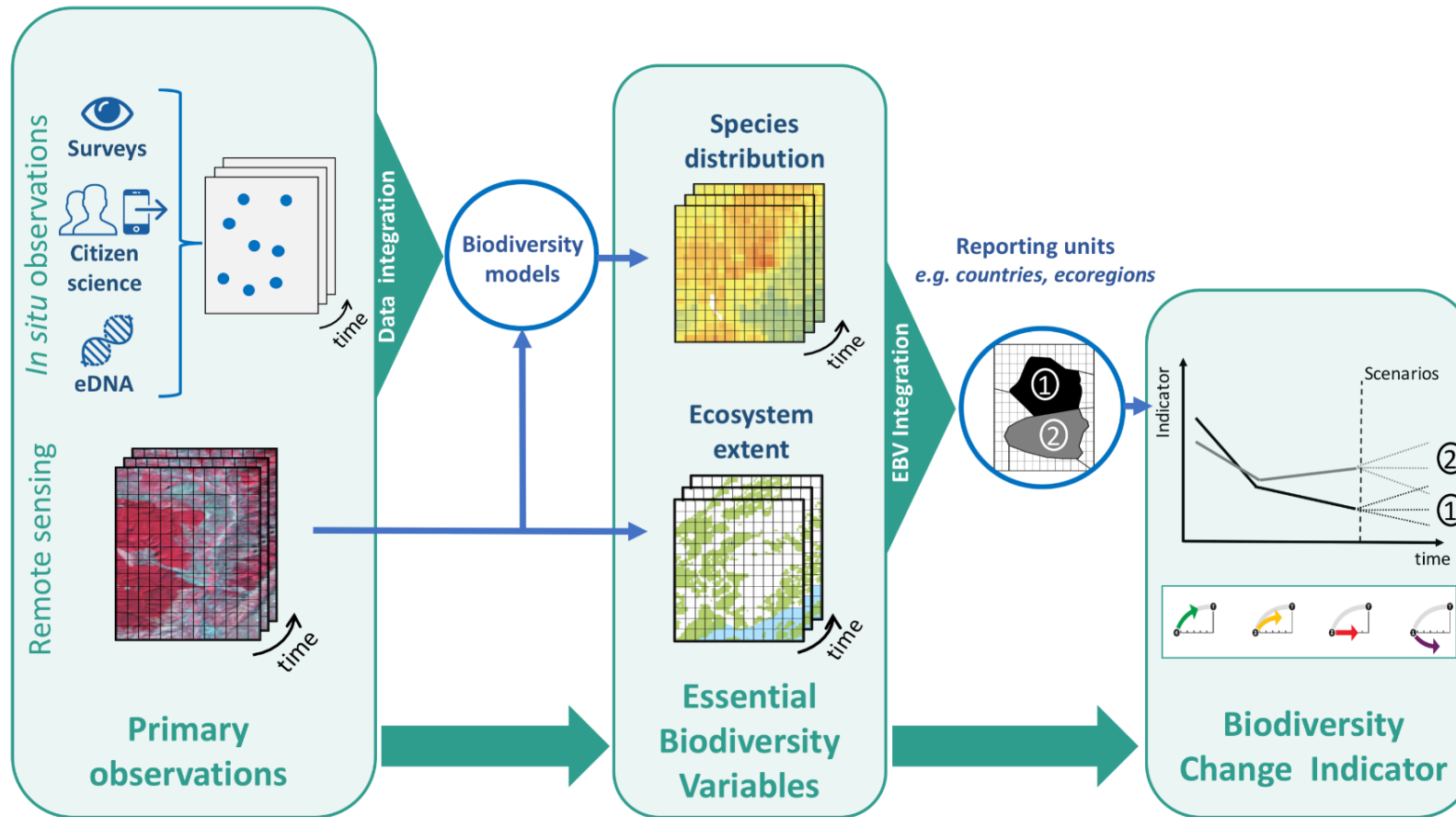
MBON

Marine Biodiversity
Observation Network

Mission: Improve the acquisition, coordination and delivery of biodiversity observations and related services to users including decision makers and the scientific community.

Illustration courtesy of F. Chavez/K. Lance
(Monterey Bay Research Institute/MBARI)

Developing the Essential Biodiversity Variables



Navarro et al. 2017

Users

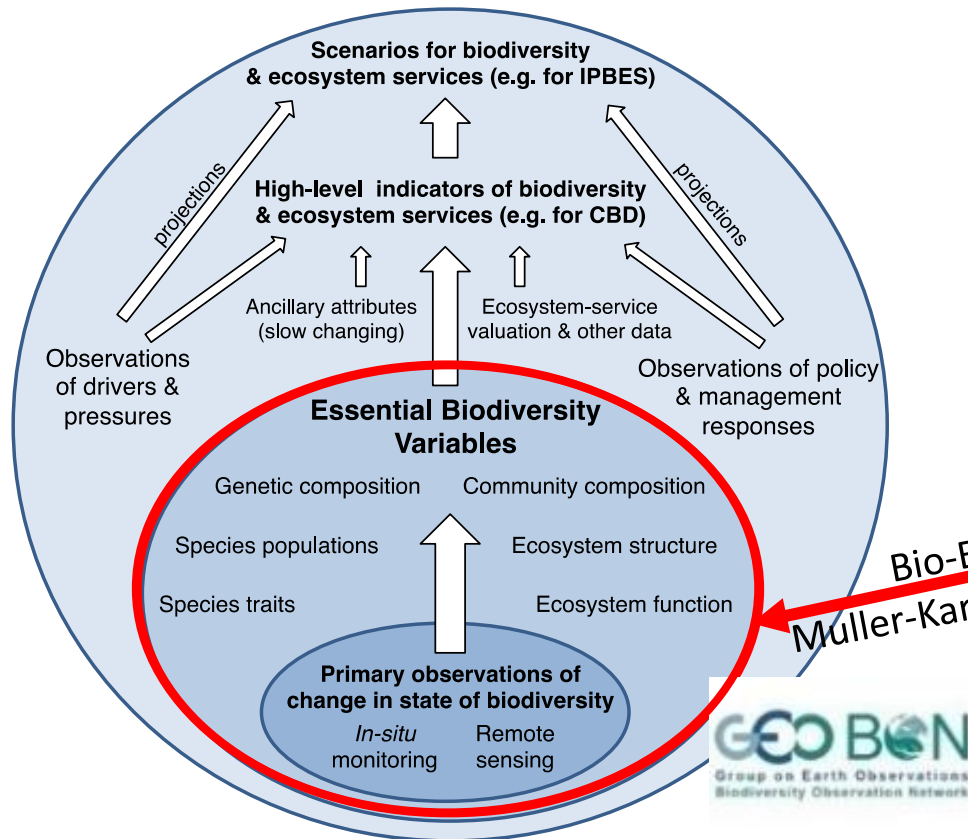
National Governments



Essential Variables – *putting data to use to improve understanding and decision-making*

Essential Biodiversity Variables (EBVs)

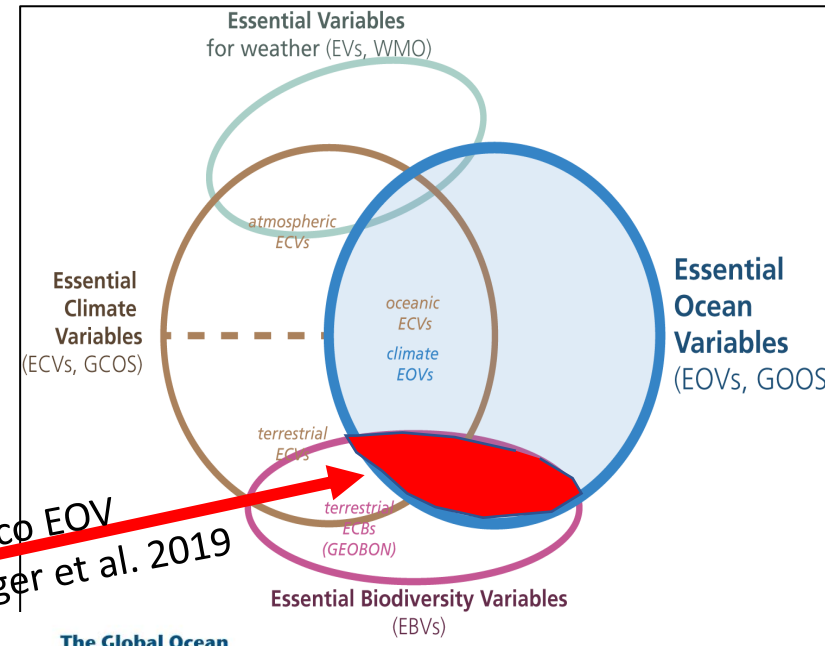
GEO BON, Pereira et al. (2013)



Essential Ocean Variables (EOVs)

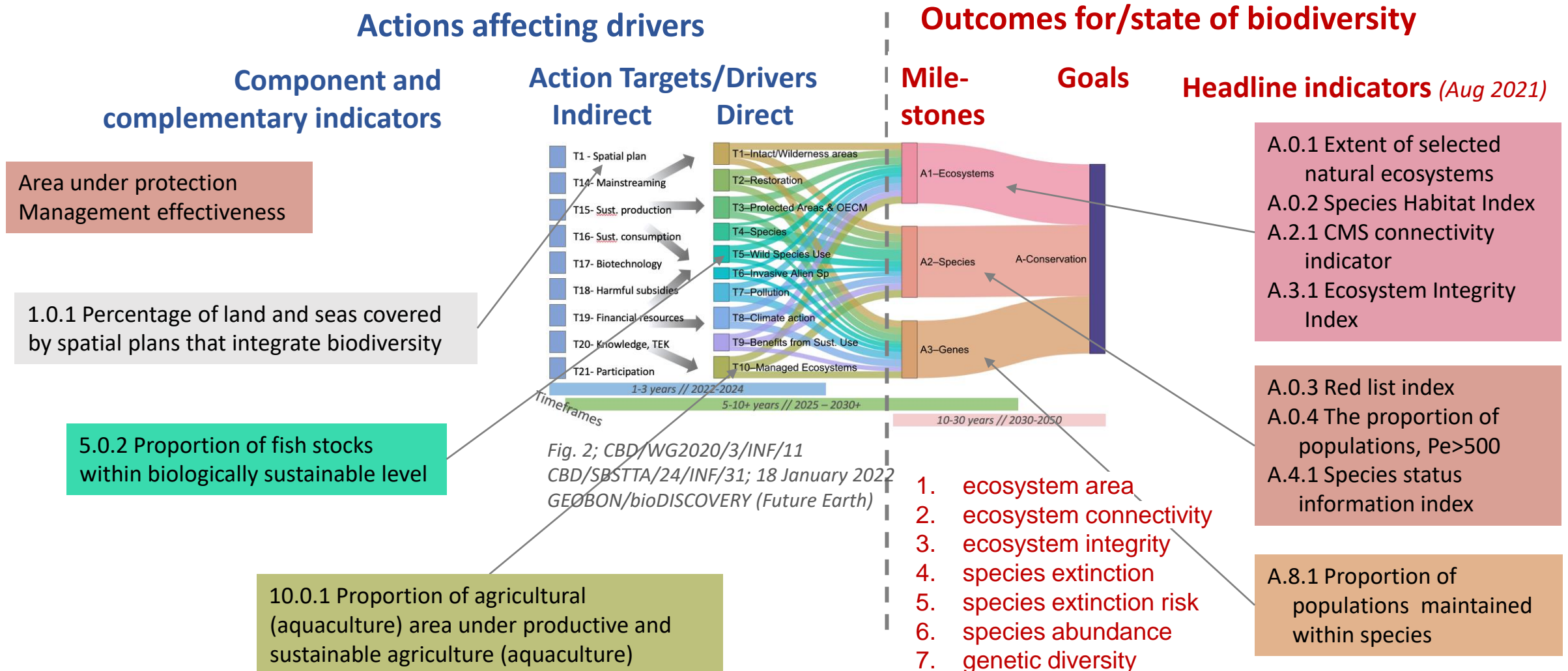
Framework for Ocean Observing (2012)

<http://www.oceanobs09.net/foo/>



- Phytoplankton biomass and diversity
- Zooplankton biomass and diversity
- Fish abundance and distribution
- Marine turtles, birds, mammals abundance and distribution
- **Hard coral cover and composition**
- Seagrass cover and composition
- Macroalgal canopy cover and composition
- Mangrove cover and composition
- Microbe biomass and diversity (*emerging)
- Invertebrate abundance and distribution (*emerging)

Headline, Component and Complementary Indicators



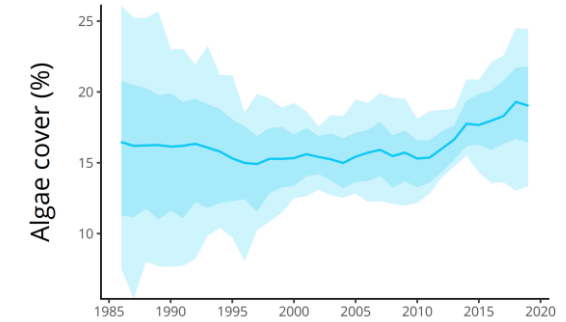


Coral Reefs

The Global Coral Reef Monitoring Network as the coral reef BON

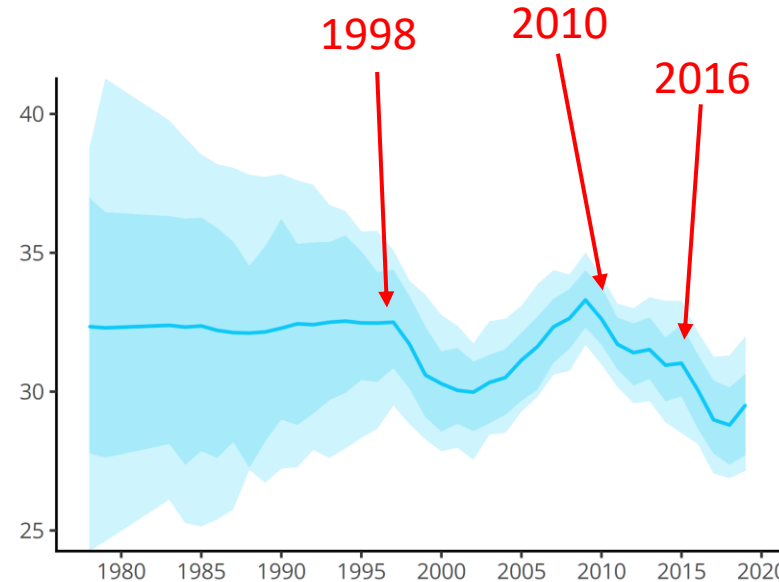
<https://gcrmn.net/2020-report/>

2nd variable (EBV/EOV-ecosystem integrity, A.3.1) - Algae cover (%) or coral:algae ratio



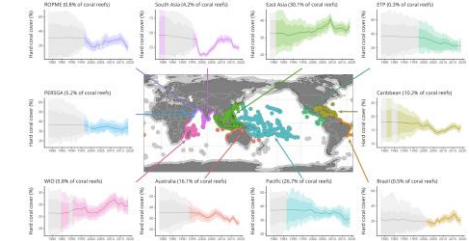
Hard coral cover (%)
Ecosystem area & integrity (A.0.1, A.3.1)

Global coral bleaching events

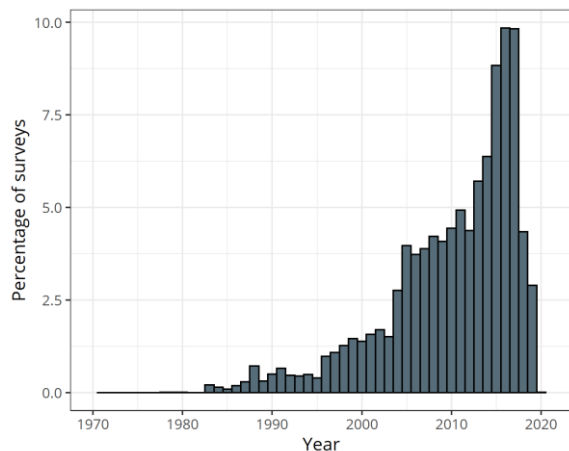


Regional networks and reporting, supporting national and management indicators

Red List of coral species,
Red List of ecosystems for coral reefs



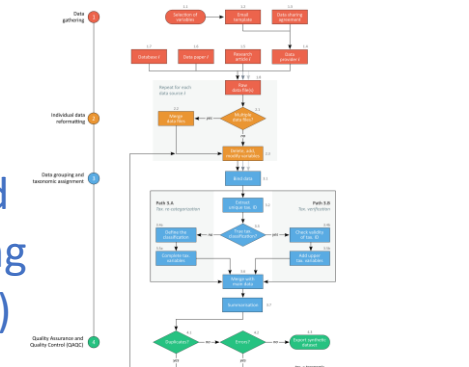
Number of observations, 1970-2020



- released October 2021
- ~2 million observations
- >300 Scientists
- 41 years (1978 – 2019)
- From 12,000 sites
- From 73 countries

WHAT OTHER INDICATORS?

Data model and capacity building (2022 and later)



International Coral Reef Initiative (*ad hoc* committee on post-2020 process)

Recommendations for coral reef indicators

| GCRMN | Goal | Target |
|--|------|--------|
| Live Coral Cover | A | 1 |
| Fleshy Algae Cover and Cover of key benthic groups | A | 1, 8 |

| OTHER SOURCES | | |
|---|---|---|
| Coral Reef Extent | A | |
| Fish Abundance and Biomass | A | 1 |
| [Percentage area] of coral reefs included in [effectively managed] MPAs and OECMs | | 3 |
| Index of coastal eutrophication | | 7 |
| Live coral cover in restored coral reef areas | | 2 |

| Future indicators for priority development | | |
|--|---|------|
| Red list of ecosystems | A | 1 |
| Hard coral genera richness | A | 1 |
| Structural complexity of coral reefs | A | 1, 8 |
| CATAMI Classification Scheme | A | 1 |
| Carbonate budgets | A | 1, 8 |

- at smaller scales (regional, national, local), a greater number of variables become available (link national to regional and global reporting).
- Link to other/existing processes where resources may be available (e.g. EIA, resource use, polluter pays, etc).
- Critical need for indicators on DRIVERS – economic sectors (e.g. tourism, transport, agriculture, fisheries), trade, etc. to link monitoring of ACTION TARGETS to BIODIVERSITY OUTCOMES

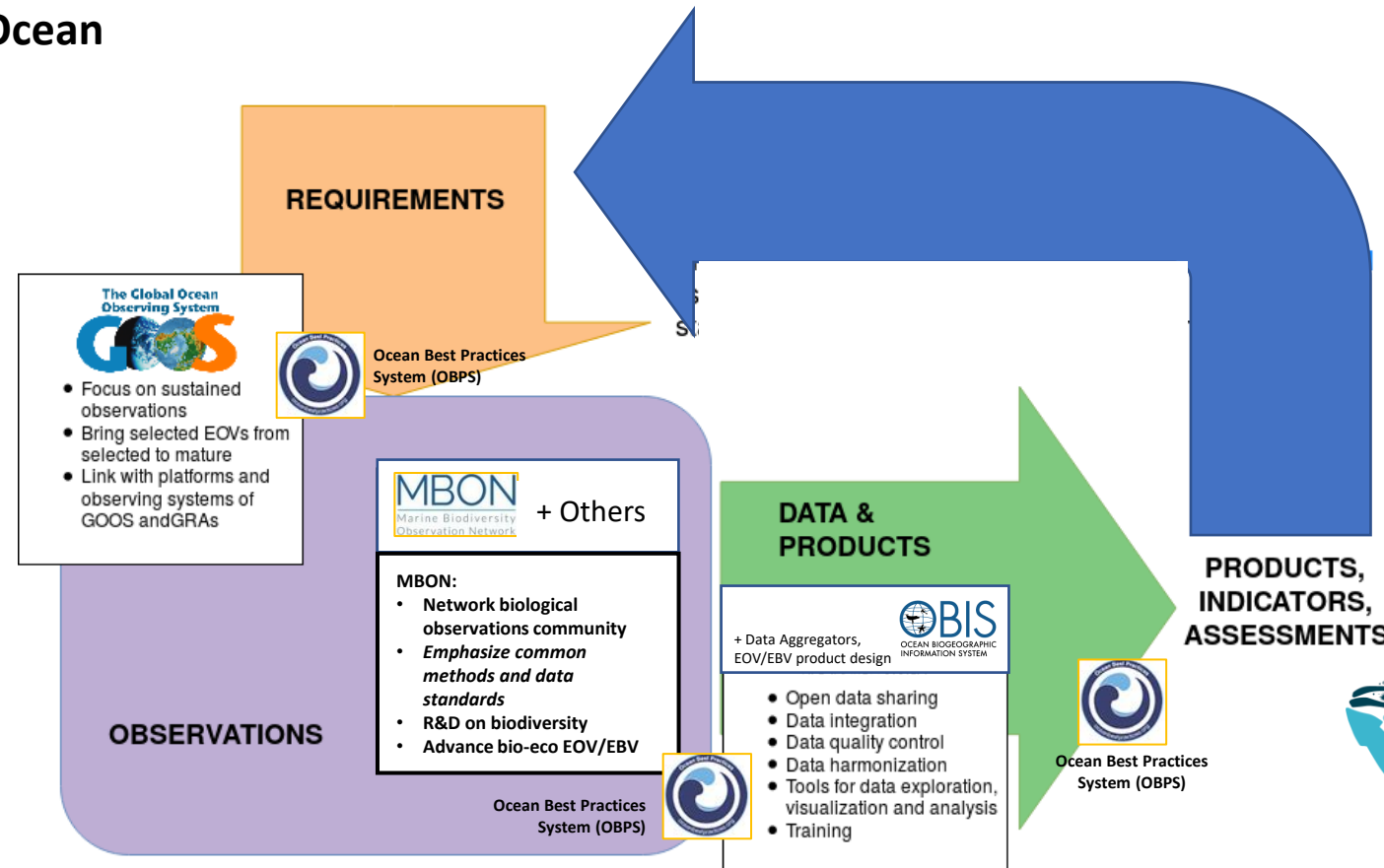
Monitoring, data and reporting platforms

Building the infrastructure needed to monitor and report on biodiversity and its benefits to people, from national to global scales

Marine Life 2030

Biological GOOS Framework for Ocean Observing in the Ocean Decade

Building a **coherent, consistent, coordinated** ocean observing system to assess the state and trends of the ocean's biological resources and ecosystems as relevant and useful to the world



<http://iobis.org/2016/12/15/goosgeobonobis/>



2021 United Nations Decade
2030 of Ocean Science
for Sustainable Development



Concluding remarks

- *What existing (or emerging) indicators do we collect in the marine science/conservation community that can be packaged under the headline, component and complementary indicators?*
- *Are there any improvements to the wording/definitions of headline, component and complementary indicators that might make them more applicable, supply of data more tractable, interpretation more meaningful?*
- *Are there key elements/components of biodiversity, or actions related to direct or indirect drivers that are missing, important to include in monitoring?*
- *What existing national/international/convention monitoring and reporting processes can supply the required data (minimal additional investment needed)?*
- *Roles of GEOBON/MBON/GOOS/MarineLife 2030/Ocean Decade/OBIS to assure marine data and information is fully incorporated in the GBF monitoring framework*
- *Primary roles of national delegations and frameworks underpinning finalization of the monitoring framework and responsibilities and validation for reporting.*